

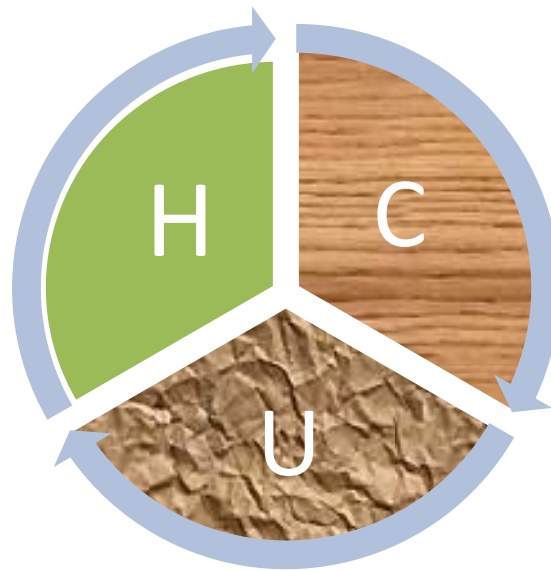


# HYDROCARBON UNIT

Energy and Mineral Resources Division

## Gas and Coal Reserve & Production

August 2019





## Gas Reserve & Production at a glance

Gas Initially in Place (GIIP)	:	35,796.19 Bcf
Recoverable (2P)	:	28,685.40 Bcf
Cumulative Production as of August 2019	:	17,066.13 Bcf
Remaining Reserve up to August 2019	:	11,619.27 Bcf
Gas Production in August 2019	:	74.67 Bcf
National Oil Company (NOC's) production in August 2019	:	29.65 Bcf
International Oil Company (IOC's) production in August 2019	:	45.02 Bcf
No. of National Oil Company (NOC's) in August 2019	:	3 (BGFCL, BAPEX, SGFL)
No. of International Oil Company (IOC's) in August 2019	:	2 (Chevron, Tullow)
Total gas fields of National Oil Company(NOC) in August 2019	:	21
Total gas fields of International Oil Company(IOC) in August 2019	:	5
Total gas wells of National Oil Company(NOC) in August 2019	:	115
Total gas wells of International Oil Company(IOC) in August 2019	:	60
No. of National Oil Company (NOC's) gas production well in August 2019	:	70
No. of International Oil Company (IOC's) gas production well in August 2019	:	42
No. of National Oil company(NOC's) suspended well in August 2019	:	45
No. of International Oil company(IOC's) suspended well in August 2019	:	18
Total LNG Import in August 2019	:	16.81 Bcf
Cumulative LNG Import from August 2018	:	149.20 Bcf



## Executive Summary of August 2019

Total gas and condensate Production in August 2019 were 74.67 Bcf and 306,577.95 Bbl. In the previous month i.e. July 2019, gas and condensate production was 74.67 Bcf and 345,954.74 Bbl and in the same month of the previous year i.e. August 2018, total gas and condensate production was 82.39 Bcf and 353,170.21 Bbl respectively. The National Oil Companies (NOC's) and International Oil Companies (IOC's) Produced 29.65 Bcf and 45.02 Bcf gas respectively in August 2019. During the previous month i.e. July 2019 gas production by the National Oil Companies (NOC's) and International Oil Companies (IOC's) were 28.77 Bcf and 43.07 Bcf respectively. In the month of August 2019 Bibiyana gas field Produced 39.53 Bcf gas and it ranked top among the gas producers. It is noted that Bibiyana gas field Produced 39.77 Bcf in July 2019. Average production from the field during the month of August 2019 was 1275 Mmcf/d.

During the month of August 2019 total production of condensate was 306,577.95 Bbl compared to 345,954.74 Bbl in the previous month i.e. July 2019. Bibiyana gas field Produced 238,521.72 Bbl condensate and ranked top while Jalalabad ranked 2<sup>nd</sup> by producing 22,110.71 Bbl.

In the month of August 2019 total coal production was 98,956.34 Ton. In the previous month i.e. July 2019 total coal production was 113,008.82 Ton. It indicates that 14,052.48 Ton less Coal was produced compared to previous month.

Total LNG import in August 2019 was 16.81 Bcf. As a result, cumulative LNG import stands on 149.20 Bcf from August 2018.



## **Table of Contents**

<b>Gas Report</b>	<b>Page No.</b>
Summary	1
summary of Reserve and Production	2
Production comparison between July 2019 & August 2019	3
Production per well & production reserve ratio	4
Monthly Production by Fields & Wells up to August 2019	5-12
Monthly Condensate Production by Fields up to August 2019	13-14
Monthly Water Production by Fields from August 2019	15-16
Conditions of Field and Well up to August 2019	17-21
<b>Chart</b>	
Well-wise Production of All fields in 2017-18	22
Reserve, Production and Remaining Reserve as of August 2019	23
Daily Average Gas Production from January 2012 to August 2019	24
Field wise Daily Average Production as of August 2019	25
Well wise Daily Average Production-BGFCL as of August 2019	26
Well wise Daily Average Production-BAPEX and SGFL, August 2019	27
Well wise Daily Average Production-IOC and JVA, August 2019	28
Comparison of Field wise Daily Avg Gas Production between July 19 & August 19	29
Daily Average Production by Operator, August 2019	30
Comparison of Operator wise daily avg Production between July 19 & August 19	31
Daily Average Production – National vs IOC’s, August 2019	32
Comparison of daily avg Gas Production- National vs IOC’s between July 19 & August 19	33
Daily Average Production IOC’s and JVA, August 2019	34
Monthly Condensate Production, August 2019	35
<b>Coal Report</b>	
Summary	36-37
Barapukuria Coal Mine-MPM and P Contract (BCMCL)	38
Barapukuria Coal Mine Day wise Data Graph for August 2019	39





## Summary of Reserve, Production & Import As of 31 August 2019

<b>Gas Initially Place (Proven + Probable)</b>	<b>35,796.19 Bcf</b>	<b>35.80 Tcf</b>
<b>Recoverable (Proven + Probable)</b>	<b>28,685.40 Bcf</b>	<b>28.69 Tcf</b>
<b>Gas Production in August 2019</b>	<b>74.67 Bcf</b>	<b>0.07 Tcf</b>
<b>Cumulative Gas Production as of August 2019</b>	<b>17,066.13 Bcf</b>	<b>17.07 Tcf</b>
<b>Remaining Reserve</b>	<b>11,619.27 Bcf</b>	<b>11.62 Tcf</b>

*NOTE: Reserve figure based on "Updated Report on Bangladesh Gas Reserve Estimation 2010", prepared by Gustavson Associates LLC, USA*

<b>Total LNG Import in August 2019</b>	<b>16.81 Bcf</b>	<b>0.02 Tcf</b>
<b>Cumulative LNG Import from August 2018</b>	<b>149.20 Bcf</b>	<b>0.15 Tcf</b>



# Summary of Reserve and Production

(As of August 2019)

Gas Bcf



Sl No.	Field	2P	GIIP	2P Reserve	Gas Prod. In August '19	Cum. Gas Production	Remaining Reserve	Cum. Condensate Production
1	Begumganj		47.0	33.0	0.2	2.9	30.1	1
2	Shahbazpur		415.0	261.0	1.9	54.9	206.1	8
3	Semutang		654.0	318.0	0.0	13.2	304.8	5
4	Fenchuganj		483.0	329.0	0.1	159.8	169.2	116
5	Salda Nadi		393.0	275.0	0.2	92.3	182.7	59
6	Srikail*		230.0	161.0	1.0	89.6	71.4	152
7	Sundalpur *		62.2	50.2	0.2	13.7	36.5	0
8	Rupganj		48.0	33.6	0.0	0.7	32.9	1
<b>Bapex</b>			<b>2,332.2</b>	<b>1,460.8</b>	<b>3.7</b>	<b>427.0</b>	<b>1,033.8</b>	<b>341</b>
9	Meghna		122.0	101.0	0.3	71.4	29.6	112
10	Narshingdi		405.0	345.0	0.8	206.1	138.9	427
11	Kamta		72.0	50.0	0.0	21.1	28.9	4
12	Habiganj		3,981.0	2,787.0	5.7	2,477.6	309.4	135
13	Bakhrabad		1,825.0	1,387.0	1.3	820.5	566.5	1,024
14	Titas		9,039.0	7,582.0	13.7	4,768.2	2,813.8	5,318
<b>BGFCL</b>			<b>15,444.0</b>	<b>12,252.0</b>	<b>21.8</b>	<b>8,365.1</b>	<b>3,886.9</b>	<b>7,020</b>
15	Sangu		976.0	771.0	0.0	489.5	281.5	37
<b>Santos/Cairn</b>			<b>976.0</b>	<b>771.0</b>	<b>0.0</b>	<b>489.5</b>	<b>281.5</b>	<b>37</b>
16	Bibiyana		5,321.0	4,532.0	36.7	3,897.9	634.1	23,234
17	Moulavi Bazar		630.0	494.0	0.5	326.1	167.9	118
18	Jalalabad**		1,346.0	1,346.0	5.6	1,329.7	16.3	10,343
<b>Chevron</b>			<b>7,297.0</b>	<b>6,372.0</b>	<b>42.8</b>	<b>5,553.7</b>	<b>818.3</b>	<b>33,694</b>
19	Feni		185.0	130.0	0.0	63.0	67.0	110
<b>Niko</b>			<b>185.0</b>	<b>129.6</b>		<b>63.0</b>	<b>66.6</b>	<b>110</b>
20	Kailas Tila		3,463.0	2,880.0	1.8	741.5	2,138.5	7,908
21	Sylhet		580.0	408.0	0.1	215.2	192.8	803
22	Rashidpur		3,887.0	3,134.0	1.5	639.7	2,494.3	786
23	Chattak		677.0	474.0	0.0	25.8	448.2	4
24	Beani Bazar		225.0	137.0	0.3	97.3	39.7	1,601
<b>SGFL</b>			<b>8,832.0</b>	<b>7,033.0</b>	<b>3.7</b>	<b>1,719.6</b>	<b>5,313.4</b>	<b>11,102</b>
25	Bangura		730.0	621.0	2.7	448.2	172.8	1,134
<b>Tullow</b>			<b>730.0</b>	<b>621.0</b>	<b>2.7</b>	<b>448.2</b>	<b>172.8</b>	<b>1,134</b>
26	Kutubdia		65.0	46.0	0.0	0.0	46.0	0
<b>Total</b>			<b>35,796.2</b>	<b>28,685.4</b>	<b>74.67</b>	<b>17,066.1</b>	<b>11,619.3</b>	<b>53,438</b>

\* Preliminary reserve estimated by BAPEX

\*\* 2P reserve estimation by Petrobangla has crossed the limit. So 2P reserve is estimated as GIIP reserve now.



## Production comparison between July'19 & August'19

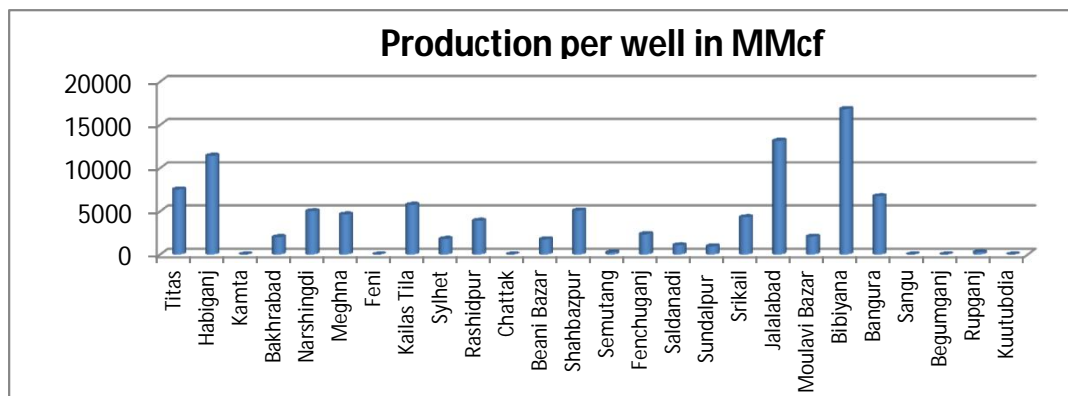


SI No.	Field	Gas Prod. (MMcf) in July'19	Daily Avg. (MMcfd) in July'19	Gas Prod. (MMcf) in Aug'19	Daily Avg. (MMcfd) in Aug'19
1	Begumganj	177	6	176	6
2	Shahbazpur	1687	54	1874	60
3	Semutang	23	1	23	1
4	Fenchuganj	201	6	142	5
5	Salda Nadi	194	6	207	7
6	Srikail	1032	33	1022	33
7	Sundalpur	218	7	216	7
8	Rupganj	0	0	0	0
<b>Bapex</b>		<b>3532</b>	<b>114</b>	<b>3659</b>	<b>118</b>
9	Meghna	257	8	315	10
10	Narshingdi	376	12	823	27
11	Kamta	0	0	0	0
12	Habiganj	5920	191	5712	184
13	Bakhrabad	1304	42	1293	42
14	Titas	14604	471	13664	441
<b>BGFCL</b>		<b>22461</b>	<b>725</b>	<b>21807</b>	<b>703</b>
15	Sangu	0	0	0	0
<b>Santos/Cairn</b>		<b>0</b>	<b>0</b>	<b>0</b>	<b>0</b>
16	Bibiyana	39773	1283	36741	1185
17	Moulavi Bazar	483	16	487	16
18	Jalalabad	6695	216	5552	179
<b>Chevron</b>		<b>46952</b>	<b>1515</b>	<b>42780</b>	<b>1380</b>
19	Feni	0	0	0	0
<b>Niko</b>		<b>0</b>	<b>0</b>	<b>0</b>	<b>0</b>
20	Kailas Tila	1841	59	1820	59
21	Sylhet	115	4	115	4
22	Rashidpur	1501	48	1499	48
23	Chattak	0	0	0	0
24	Beani Bazar	266	9	264	9
<b>SGFL</b>		<b>3723</b>	<b>120</b>	<b>3699</b>	<b>119</b>
25	Bangura	3191	103	2726	88
<b>Tullow</b>		<b>3191</b>	<b>103</b>	<b>2726</b>	<b>88</b>
26	Kutubdia	0	0	0	0
<b>Total</b>		<b>79859</b>	<b>2576</b>	<b>74671</b>	<b>2409</b>

## Production per well & production reserve ratio



	No of production well	Total 2p- Recoverable	2018-19 production	production per well mmcf	production reserve ratio
Titas	26	7582	183.36	7052.31	0.024
Habiganj	8	2787	79.21	9901.25	0.028
Kamta	0	50	0	0.00	0.000
Bakhrabad	7	1387	11	1571.43	0.008
Narshingdi	2	345	9.95	4975.00	0.029
Meghna	1	101	4.12	4120.00	0.041
Feni	0	130	0	0.00	0.000
Kailas Tila	4	2880	22.87	5717.50	0.008
Sylhet	1	408	1.5	1500.00	0.004
Rashidpur	5	3134	18.6	3720.00	0.006
Chattak	0	474	0	0.00	0.000
Beani Bazar	1	137	3.21	3210.00	0.023
Shahbazpur	4	261	20.35	5087.50	0.078
Semutang	2	318	0.28	140.00	0.001
Fenchuganj	2	329	3.41	1705.00	0.010
Saldanadi	2	275	1.56	780.00	0.006
Sundalpur	1	50.2	2.52	2520.00	0.050
Srikail	3	161	12.45	4150.00	0.077
Jalalabad	7	1346	84.14	12020.00	0.063
Moulavi Bazar	4	494	7.87	1967.50	0.016
Bibiyana	26	4532	463.74	17836.15	0.102
Bangura	5	621	32.89	6578.00	0.053
Sangu	0	771	0	0.00	0.000
Begumganj	1	33	1.71	0.00	0.052
Rupganj	0	33.6	0	0.00	0.000
Kuutubdia	0	46	0	0.00	0.000
<b>Total</b>	<b>112</b>	<b>28685.8</b>	<b>964.74</b>	<b>8613.75</b>	<b>0.034</b>



## Monthly Production by Field and Well upto August- 2019



**HYDROCARBON UNIT**

Energy & Mineral Resources Division

Figure

Well	Jan	Feb	Mar	Apr	May	Jun	Jul	Aug	Sep	Oct	Nov	Dec	Total	Cumulative	2018	2017
<b>Field : Bakharabad</b>																
BKB-1	0	0	0	0	243	448	461	434					1,585	142,752	0	0
BKB-2	34	32	37	36	38	34	29	30					270	86,840	445	543
BKB-3	154	151	154	152	149	142	151	148					1,202	162,047	1,989	2,249
BKB-4	0	0	0	0	0	0	0	0					0	55,872		
BKB-5	155	140	154	146	141	140	145	151					1,172	59,983	1,822	1,847
BKB-6	0	0	0	0	0	0	0	0					0	50,069	0	
BKB-7	0	0	0		0	0	0	0					0	107,750	0	0
BKB-8	158	170	214	230	214	206	237	231					1,659	127,920	2,017	3,462
BKB-9	251	229	248	242	215	170	189	207					1,751	22,874	3,332	3,637
BKB-10	98	84	91	89	94	90	93	93					731	4,405	1,297	1,453
<b>Field Total:</b>	<b>852</b>	<b>807</b>	<b>898</b>	<b>894</b>	<b>1,094</b>	<b>1,229</b>	<b>1,304</b>	<b>1,293</b>	<b>0</b>	<b>0</b>	<b>0</b>	<b>0</b>	<b>8,371</b>	<b>820,512</b>	<b>10,903</b>	<b>13,190</b>
<b>Daily Avg.(mmscfd)</b>	27	29	29	30	35	41	42	42	0	0	0	0	34		30	36
<b>Field : Bangura</b>																
Bangura-1	384	343	377	363	368	354	347	300					2,837	92,091	4,615	4,914
Bangura-2	504	437	472	469	458	442	451	389					3,623	83,160	6,802	7,837
Bangura-3	601	516	563	544	544	470	542	424					4,204	100,931	7,265	8,662
Bangura-6	343	306	319	320	312	268	311	243					2,423	11,370	4,847	4,100
Bangura-5	1,212	1,087	1,200	1,153	1,182	1,197	1,540	1,370					9,940	160,682	8,410	9,699
<b>Field Total:</b>	<b>3,044</b>	<b>2,690</b>	<b>2,931</b>	<b>2,848</b>	<b>2,864</b>	<b>2,732</b>	<b>3,191</b>	<b>2,726</b>	<b>0</b>	<b>0</b>	<b>0</b>	<b>0</b>	<b>23,026</b>	<b>448,235</b>	<b>31,940</b>	<b>35,212</b>
<b>Daily Avg.(mmscfd)</b>	98	96	95	95	92	91	103	88	0	0	0	0	95		88	96
<b>Field : Beani Bazar</b>																
BB-1	0	0	0	0	0	0	0	0	0	0	0	0	0	35,481	0	1,023
BB-2	274	239	266	256	269	259	266	264					2,094	61,830	3,276	3,282
<b>Field Total:</b>	<b>274</b>	<b>239</b>	<b>266</b>	<b>256</b>	<b>269</b>	<b>259</b>	<b>266</b>	<b>264</b>	<b>0</b>	<b>0</b>	<b>0</b>	<b>0</b>	<b>2,094</b>	<b>97,310</b>	<b>3,276</b>	<b>4,306</b>
<b>Daily Avg.(mmscfd)</b>	9	9	9	9	9	9	9	9	0	0	0	0	9		9	12
<b>Field : Bibiyana</b>																
BY-1	2,554	2,149	2,272	2493	2,668	1,827	2452	2,164					18,578	386,463	21,743	35,595
BY-2	1,632	1,327	1,573	1544	1,560	1,363	1451	1,251					11,702	286,129	21,388	23,957
BY-3	737	608	567	549	526	519	218	4					3,728	238,997	6,249	9,904
BY-4	1,865	1,587	1,790	1921	2,125	1,896	2227	1,965					15,376	195,914	28,559	6,571
BY-5	762	698	718	297	668	527	514	434					4,619	176,586	6,131	8,117
BY-6	792	617	771	809	937	623	736	733					6,016	227,512	11,057	11,879
BY-7	2,548	2,171	2,391	2190	2,322	1,904	2325	1,988					17,839	262,423	23,155	32,874
BY-8	768	713	753	777	761	802	815	840					6,230	140,473	8,921	12,486
BY-9	553	482	359	476	484	488	454	484					3,781	128,398	4,093	6,247

## Monthly Production by Field and Well upto August- 2019



**HYDROCARBON UNIT**

Energy & Mineral Resources Division

Figure

Well	Jan	Feb	Mar	Apr	May	Jun	Jul	Aug	Sep	Oct	Nov	Dec	Total	Cumulative	2018	2017
BY-10	2,106	1,752	2,357	2244	2,233	1,901	2227	2,100					16,919	351,917	30,954	32,967
BY-11	797	626	657	818	861	727	836	678					5,999	125,960	12,147	6,813
BY-12	2,162	2,177	2,205	2245	2,280	2,173	2333	2,358					17,933	140,637	6,835	8,284
BY-13	959	569	880	798	950	905	963	883					6,907	79,866	13,171	11,842
BY-14	800	730	845	666	777	660	721	670					5,868	96,482	11,523	15,354
BY-15	1,829	1,420	1,646	1693	2,124	1,806	2051	1,817					14,386	111,307	24,295	19,111
BY-16	908	823	806	741	807	792	877	896					6,651	67,723	9,264	12,541
BY-17	1,794	1,176	1,440	1496	1,576	1,726	1770	1,265					12,242	90,113	17,603	15,412
BY-18	2,784	2,387	2,668	2541	2,546	2,204	2489	2,494					20,115	137,917	31,890	29,509
BY-19	1,761	2,275	2,368	2362	2,407	2,003	2354	2,359					17,889	49,967	8,144	9,859
BY-20	1,636	2,008	2,113	2176	1,384	1,106	1748	1,818					13,991	51,836	7,840	6,533
BY-21	634	531	656	671	719	649	723	577					5,159	40,383	9,670	13,246
BY-22	1,742	1,310	1,480	1517	1,833	1,403	1736	1,629					12,651	120,450	24,755	27,093
BY-23	2,261	1,781	2,212	2100	2,190	1,731	2144	2,025					16,444	68,491	32,043	15,333
BY-24	870	712	824	826	830	850	833	787					6,533	64,697	13,268	13,484
BY-25	2,070	2,145	2,340	2229	2,396	1,836	2308	2,152					17,476	122,656	28,306	30,331
BY-26	2,683	2,344	2,465	2318	2,524	1,885	2467	2,370					19,055	134,621	33,853	30,446
<b>Field Total:</b>	<b>40006</b>	<b>35117</b>	<b>39154</b>	<b>38499</b>	<b>40489</b>	<b>34306</b>	<b>39773</b>	<b>36741</b>	<b>0</b>	<b>0</b>	<b>0</b>	<b>0</b>	<b>304,087</b>	<b>3,897,915</b>	<b>446,855</b>	<b>445,787</b>
<b>Daily Avg.(mmscfd)</b>	1291	1254	1263	1283	1306	1144	1283	1,185	0	0	0	0	1,251		1,224	1,221
<b>Field :</b>	<b>Chattak</b>															
Ch-1	Production Suspended														25,834	
<b>Field Total:</b>	<b>0</b>	<b>0</b>	<b>0</b>	<b>0</b>	<b>0</b>	<b>0</b>	<b>0</b>	<b>0</b>	<b>0</b>	<b>0</b>	<b>0</b>	<b>0</b>	<b>0</b>	<b>25,834</b>		
<b>Daily Avg.(mmscfd)</b>			0	0			0				0		0		0	
<b>Field :</b>	<b>Fenchuganj</b>															
Fenchuganj-2	0	0	0	0	0	0	0	0					0	38,169	0	0
Fenchuganj-3	274	203	225	217	145	129	174	121					1,488	92,126	3,186	6,192
Fenchuganj-4	60	30	30	28	27	25	27	21					248	29,522	809	441
<b>Field Total:</b>	<b>334</b>	<b>234</b>	<b>255</b>	<b>245</b>	<b>172</b>	<b>154</b>	<b>201</b>	<b>142</b>	<b>0</b>	<b>0</b>	<b>0</b>	<b>0</b>	<b>1,736</b>	<b>159,816</b>	<b>3,994</b>	<b>6,633</b>
<b>Daily Avg.(mmscfd)</b>	11	8	8	8	6	5	6	5	0	0	0	0	7		11	18
<b>Field :</b>	<b>Feni</b>															
Feni-1	Production Suspended									0		0		34,214		
Feni-2	Production Suspended									0		0		6,119		
Feni-3	Production Suspended									0		0		2,176		



## Monthly Production by Field and Well upto August- 2019



**HYDROCARBON UNIT**

Energy & Mineral Resources Division

Figure

Well	Jan	Feb	Mar	Apr	May	Jun	Jul	Aug	Sep	Oct	Nov	Dec	Total	Cumulative	2018	2017
Feni-4	Production Suspended								0					14,386		
Feni-5	Production Suspended								0					6,127		
<b>Field Total:</b>														<b>63,023</b>		
<b>Daily Avg.(mmscfd)</b>																
<b>Field : Habiganj</b>																
Hbj-1	429	375	414	379	369	331	338	311					2,945	281,053	2,207	0
Hbj-2	0	0	0	0	0	0	0	0					0	275,704	0	0
Hbj-3	1,105	952	986	925	954	861	890	850					7,524	384,681	13,155	13,151
Hbj-4	1,105	952	986	925	954	861	890	850					7,524	379,139	13,155	13,151
Hbj-5	798	711	776	746	770	725	767	732					6,026	303,700	9,497	9,497
Hbj-6	461	413	459	447	461	435	460	440					3,577	165,786	5,487	5,491
Hbj-7	1,211	1,090	1,233	1191	1,228	1,160	1197	1,176					9,487	262,605	14,533	14,565
Hbj-8	0	0	0	0	0	0	0	0					0	11,023	0	0
Hbj-9	0	0	0	0	0	0	0	0					0	52,652	0	0
Hbj-10	969	870	925.3	893	921	833	838	823					7,073	260,206	13,928	14,058
Hbj-11	697	623	619.27	598	617	544	539	529					4,767	101,075	9,579	10,398
<b>Field Total:</b>	<b>6,776</b>	<b>5,985</b>	<b>6,400</b>	<b>6,104</b>	<b>6,276</b>	<b>5,750</b>	<b>5,920</b>	<b>5,712</b>	<b>0</b>	<b>0</b>	<b>0</b>	<b>0</b>	<b>48,923</b>	<b>2,477,624</b>	<b>81,540</b>	<b>80,313</b>
<b>Daily Avg.(mmscfd)</b>	219	214	206	203	202	192	191	184	0	0	0	0	201		223	220
<b>Field : Jalalabad</b>																
JB-1	877	733	790	761	813	703	786	670					6,132	251,901	10,469	9,142
JB-2	1,088	910	978	934	1,001	876	975	832					7,595	287,191	12,973	14,517
JB-3	1,451	1,214	1,313	1277	1,344	1,177	1300	1,120					10,195	350,719	17,399	19,162
JB-4	453	379	410	399	419	368	406	345					3,180	282,180	5,821	7,045
JB-6	1,451	1,114	1,313	1277	1,332	1,163	1297	1,010					9,957	69,281	17,364	19,524
JB-7	1,088	910	985	955	1,014	882	973	793					7,600	36,990	13,053	10,324
JB-8	1,073	898	971	943	1,000	860	959	782					7,485	51,415	12,793	14,513
<b>Field Total:</b>	<b>7,482</b>	<b>6,158</b>	<b>6,760</b>	<b>6,546</b>	<b>6,922</b>	<b>6,029</b>	<b>6,695</b>	<b>5,552</b>	<b>0</b>	<b>0</b>	<b>0</b>	<b>0</b>	<b>52,144</b>	<b>1,329,678</b>	<b>89,872</b>	<b>94,226</b>
<b>Daily Avg.(mmscfd)</b>	241	220	218	218	223	201	216	179	0	0	0	0	215		246	258
<b>Field : Kailas Tila</b>																
KTL-1	147	109	114	0	0	0	0	0					371	205,181	462	0

## Monthly Production by Field and Well upto August- 2019



**HYDROCARBON UNIT**

Energy & Mineral Resources Division

Figure

Well	Jan	Feb	Mar	Apr	May	Jun	Jul	Aug	Sep	Oct	Nov	Dec	Total	Cumulative	2018	2017
KTL-2	612	551	610	585	607	590	611	610					4,775	182,922	7,190	7,242
KTL-3	235	209	228	221	226	219	226	226					1,791	139,610	2,947	3,255
KTL-4	253	228	254	242	238	229	229	217					1,891	97,986	3,336	3,680
KTL-5	0	0	0	0	0	0	0	0					0	17,923	0	0
KTL-6	770	689	765	731	774	744	774	768					6,015	97,104	8,950	9,086
KTL-7	0	0	0	0	0	0	0	0					0	816	0	0
<b>Field Total:</b>	<b>2,017</b>	<b>1,787</b>	<b>1,971</b>	<b>1,779</b>	<b>1,846</b>	<b>1,783</b>	<b>1,841</b>	<b>1,820</b>	<b>0</b>	<b>0</b>	<b>0</b>	<b>0</b>	<b>14,843</b>	<b>741,542</b>	<b>22,886</b>	<b>23,263</b>
<b>Daily Avg.(mmscfd)</b>	65	64	64	59	60	59	59	59	0	0	0	0	61		63	64
<b>Field : Kamta</b>																
Kamta-1	Production Suspended													21,139		
<b>Field Total:</b>			0	0	0	0	0	0						21,139		
<b>Daily Avg.(mmscfd)</b>																
<b>Field : Meghna</b>																
M-1	372	308	314	302	293	272	257	315					2,434	71,407	4,538	4,625
<b>Field Total:</b>	<b>372</b>	<b>308</b>	<b>314</b>	<b>302</b>	<b>293</b>	<b>272</b>	<b>257</b>	<b>315</b>	<b>0</b>	<b>0</b>	<b>0</b>	<b>0</b>	<b>2,434</b>	<b>71,407</b>	<b>4,538</b>	<b>4,625</b>
<b>Daily Avg.(mmscfd)</b>	12	11	10	10	9	9	8	10	0	0	0	0	10		12	13
<b>Field : Moulavi Bazar</b>																
MV Bazar-2	121	79	72	62	58	29	23	67					511	54,549	2,302	2,866
MV Bazar-3	207	149	124	113	173	92	75	204					1,138	158,947	3,712	4,705
MV Bazar-4	159	102	67	60	54	26	83	109					659	58,726	3,103	3,945
MV Bazar-5	0	0	0	0	0	0	0	0						66		
MV Bazar-6	193	182	132	183	237	154	301	107					1,490	17,839	1,734	1,676
MV Bazar-7	1	1	0	0	0	0	0	0					3	5,646	21	152
MV Bazar-9	0	0	0	0	0	0	0	0					0	30,336	1	0
<b>Field Total:</b>	<b>682</b>	<b>511</b>	<b>396</b>	<b>418</b>	<b>523</b>	<b>301</b>	<b>483</b>	<b>487</b>	<b>0</b>	<b>0</b>	<b>0</b>	<b>0</b>	<b>3,802</b>	<b>326,110</b>	<b>10,872</b>	<b>13,345</b>
<b>Daily Avg.(mmscfd)</b>	22	18	13	14	17	10	16	16	0	0	0	0	16		30	37
<b>Field : Narshingdi</b>																
N-1	530	479	530	535	566	478	58	504					3,679	148,273	6,181	6,279
N-2	314	278	313	317	319	303	318	319					2,482	57,851	3,705	3,962
<b>Field Total:</b>	<b>844</b>	<b>757</b>	<b>843</b>	<b>852</b>	<b>885</b>	<b>780</b>	<b>376</b>	<b>823</b>	<b>0</b>	<b>0</b>	<b>0</b>	<b>0</b>	<b>6,161</b>	<b>206,125</b>	<b>9,886</b>	<b>10,241</b>

## Monthly Production by Field and Well upto August- 2019



**HYDROCARBON UNIT**

Energy & Mineral Resources Division

Figure

Well	Jan	Feb	Mar	Apr	May	Jun	Jul	Aug	Sep	Oct	Nov	Dec	Total	Cumulative	2018	2017
<b>Daily Avg.(mmscfd)</b>	27	27	27	28	29	26	12	27	0	0	0	0	25		27	28
<b>Field : Rashidpur</b>																
RP-1	542	491	530	513	537	513	536	539					4,201	171,264	6,505	6,625
RP-2	0	0	0	0	0	0	0	0					0	82,474		
RP-3	300	271	300	286	294	283	292	292					2,317	133,526	3,541	3,730
RP-4	267	239	262	243	237	223	231	234					1,937	129,833	3,227	3,516
RP-5	0	0	0	0	0	0	0	0					0	25,647		
RP-6	0	0	0	0	0	0	0	0					0	9,983	0	0
RP-7	173	155	163	149	143	138	142	144					1,207	65,533	2,096	2,225
RP-8	314	284	314	300	306	296	300	290					2,404	21,437	3,696	3,977
<b>Field Total:</b>	<b>1,597</b>	<b>1,439</b>	<b>1,569</b>	<b>1,491</b>	<b>1,517</b>	<b>1,454</b>	<b>1,501</b>	<b>1,499</b>	<b>0</b>	<b>0</b>	<b>0</b>	<b>0</b>	<b>12,068</b>	<b>639,696</b>	<b>19,065</b>	<b>20,074</b>
<b>Daily Avg.(mmscfd)</b>	52	51	51	50	49	48	48	48	0	0	0	0	50		52	55
<b>Field : Salda Nadi</b>																
Salda-1	0	0	0	0	0	0	0	0					0	36,904	0	0
Salda-2	0	0	0	0	0	0	0	0					0	28,495	0	0
Salda-3	123	119	135	130	125	120	192	207					1,151	26,731	1,067	1,514
Salda-4	4	5	5	6	4	4	2	0					29	146	70	14
<b>Field Total:</b>	<b>127</b>	<b>124</b>	<b>140</b>	<b>136</b>	<b>128</b>	<b>123</b>	<b>194</b>	<b>207</b>	<b>0</b>	<b>0</b>	<b>0</b>	<b>0</b>	<b>1,180</b>	<b>92,277</b>	<b>1,137</b>	<b>1,527</b>
<b>Daily Avg.(mmscfd)</b>	4	4	5	5	4	4	6	7	0	0	0	0	5		3	4
<b>Field : Sangu</b>																
Sangu-1	0	0	0	0	0	0	0	0	0	0	0	0	0	116,191	0	0
Sangu-3z	0	0	0	0	0	0	0	0	0	0	0	0	0	131,796	0	0
Sangu-4	Production Suspended						0	0	0	0	0	0	0	87,280		
Sangu-5	Production Suspended						0	0	0	0	0	0	0	61,674		
Sangu-7	Production Suspended						0	0	0	0	0	0	0	18,202		
Sangu-8	Production Suspended						0	0	0	0	0	0	0	37,619		
Sangu-9	0	0	0	0	0	0	0	0	0	0	0	0	0	30,638	0	0
Sangu-10	Production Suspended						0	0	0	0	0	0	0			
Sangu-11	0	0	0	0	0	0	0	0	0	0	0	0	0	6,067	0	0
<b>Field Total:</b>	<b>0</b>	<b>0</b>	<b>0</b>	<b>0</b>	<b>0</b>	<b>0</b>	<b>0</b>	<b>0</b>	<b>0</b>	<b>0</b>	<b>0</b>	<b>0</b>	<b>0</b>	<b>489,467</b>	<b>0</b>	<b>0</b>

## Monthly Production by Field and Well upto August- 2019



**HYDROCARBON UNIT**

Energy & Mineral Resources Division

Figure

Well	Jan	Feb	Mar	Apr	May	Jun	Jul	Aug	Sep	Oct	Nov	Dec	Total	Cumulative	2018	2017
<b>Daily Avg.(mmscfd)</b>	0	0	0	0	0	0	0	0	0	0	0	0	0		0	0
<b>Field : Semutang</b>																
Semutang-5	14	12	12	10	9	8	9	11					86	12,151	291	471
Semutang-6	7	11	14	14	14	14	14	12					100	1,056	84	66
<b>Field Total:</b>	<b>22</b>	<b>23</b>	<b>27</b>	<b>24</b>	<b>23</b>	<b>22</b>	<b>23</b>	<b>23</b>	<b>0</b>	<b>0</b>	<b>0</b>	<b>0</b>	<b>186</b>	<b>13,206</b>	<b>375</b>	<b>537</b>
<b>Daily Avg.(mmscfd)</b>	1	1	1	1	1	1	1	1	0	0	0	0	1		1	1
<b>Field : Shahbazpur</b>																
Shahbazpur-1	0	0	0	0	35	265	66	146					513	21,871	134	4,835
Shahbazpur-2	534	523	637	656	678	531	596	685					4,839	15,921	6,650	4,243
Shahbazpur-3	377	436	505	510	536	585	619	629					4,197		5,222	1,162
Shahbazpur-4	513	452	567	632	608	481	407	414					4,073	17,076	6,936	1,801
<b>Field Total:</b>	<b>1,424</b>	<b>1,411</b>	<b>1,709</b>	<b>1,797</b>	<b>1,857</b>	<b>1,862</b>	<b>1,687</b>	<b>1,874</b>	<b>0</b>	<b>0</b>	<b>0</b>	<b>0</b>	<b>13,621</b>	<b>54,868</b>	<b>18,943</b>	<b>12,041</b>
<b>Daily Avg.(mmscfd)</b>	46	50	55	60	60	62	54	60	0	0	0	0	56		52	33
<b>Field : Srikail</b>																
Srikail-2	442	417	461	443	452	432	446	451					3,544	41,488	5,154	5,384
Srikail-3	358	333	363	337	337	322	333	329					2,710	37,542	4,273	4,944
Srikail-4	276	256	277	272	261	248	254	242					2,085	10,530	2,971	3,439
<b>Field Total:</b>	<b>1,076</b>	<b>1,005</b>	<b>1,102</b>	<b>1,052</b>	<b>1,050</b>	<b>1,001</b>	<b>1,032</b>	<b>1,022</b>	<b>0</b>	<b>0</b>	<b>0</b>	<b>0</b>	<b>8,339</b>	<b>89,560</b>	<b>12,398</b>	<b>13,767</b>
<b>Daily Avg.(mmscfd)</b>	35	36	36	35	34	33	33	33	0	0	0	0	34		34	38
<b>Field : Sundalpur</b>																
Sundalpur -1	0	0	0		0	0	0	0					0	9,809	0	0
Sundalpur -2	220	200	220	212	218	207	218	216					1,711	3,887	2,176	0
<b>Field Total:</b>	<b>220</b>	<b>200</b>	<b>220</b>	<b>212</b>	<b>218</b>	<b>207</b>	<b>218</b>	<b>216</b>	<b>0</b>	<b>0</b>	<b>0</b>	<b>0</b>	<b>1,711</b>	<b>13,696</b>	<b>2,176</b>	<b>0</b>
<b>Daily Avg.(mmscfd)</b>	7	7	7	7	7	7	7	7	0	0	0	0	7		6	0
<b>Field : Sylhet</b>																
Sylhet-3	Production Suspended												89,032			
Sylhet-6	Production Suspended												91,748			
Sylhet-7	131	108	118	113	117	111	115	115					928	27,918	1,622	2,061
Surma-1	0	0	0	0	0	0	0	0					0	6,528	0	249

## Monthly Production by Field and Well upto August- 2019



**HYDROCARBON UNIT**

Energy & Mineral Resources Division

Figure

Well	Jan	Feb	Mar	Apr	May	Jun	Jul	Aug	Sep	Oct	Nov	Dec	Total	Cumulative	2018	2017
<b>Field Total:</b>	<b>131</b>	<b>108</b>	<b>118</b>	<b>113</b>	<b>117</b>	<b>111</b>	<b>115</b>	<b>115</b>	<b>0</b>	<b>0</b>	<b>0</b>	<b>0</b>	<b>928</b>	<b>215,226</b>	<b>1,622</b>	<b>2,309</b>
<b>Daily Avg.(mmscfd)</b>	4	4	4	4	4	4	4	4	0	0	0	0	4		4	6
<b>Field :</b>	<b>Titas</b>															
Titas-1	675	537	559	566	571	521	556	533					4,518	444,147	8,516	7,897
Titas-2	962	865	939	906	968	903	918	842					7,302	442,807	11,522	11,506
Titas-3	0	0	0	0	0	0	0	0	0	0	0	0	0	314,888	0	
Titas-4	994	861	960	923	972	900	937	844					7,392	377,843	11,726	11,798
Titas-5	1,020	899	997	968	1,015	975	1030	907					7,811	436,063	11,838	11,869
Titas-6	978	878	958	964	142	739	834	765					6,257	369,385	12,030	12,029
Titas-7	947	824	977	891	948	740	862	708					6,897	351,761	11,919	11,707
Titas-8	510	426	498	497	567	433	493	461					3,885	276,521	6,154	6,889
Titas-9	539	475	517	518	583	548	570	572					4,322	280,811	6,706	8,246
Titas-10	647	565	636	619	702	671	716	616					5,172	204,173	7,612	7,431
Titas-11	855	762	867	830	858	282	514	524					5,493	252,393	9,998	10,276
Titas-12	482	422	483	463	476	305	415	340					3,386	104,161	5,160	5,168
Titas-13	580	513	576	552	567	501	525	555					4,369	194,461	6,952	7,879
Titas-14	576	498	566	536	552	412	433	429					4,000	153,986	7,203	8,309
Titas-15	460	412	434	405	420	402	416	417					3,365	142,879	5,543	7,973
Titas-16	669	592	646	612	635	569	601	586					4,910	151,255	8,605	10,060
Titas-17	515	431	507	475	514	443	508	465					3,858	43,361	6,335	7,011
Titas-18	546	458	535	504	540	464	537	489					4,072	42,078	6,664	7,168
Titas-19	507	450	489	458	471	441	471	470					3,758	31,806	6,115	6,106
Titas-20	305	277	310	294	306	292	292	298					2,375	21,202	3,914	3,635
Titas-21	253	232	258	249	263	250	256	260					2,020	11,252	2,995	2,800
Titas-22	309	284	296	231	269	265	275	264					2,193	26,610	4,158	4,336
Titas-27	487	404	478	455	479	418	496	485					3,702	32,541	5,827	6,136
Titas-23	483	436	489	477	496	459	474	192					3,506	13,511	5,594	4,410
Titas-24	202	185	207	196	195	188	204	449					1,825	6,817	2,709	2,283
Titas-25	528	476	528	508	519	472	500	740					4,272	16,487	6,324	5,622
Titas-26	809	733	801	731	783	702	769	453					5,782	25,047	9,672	9,210
<b>Field Total:</b>	<b>15,838</b>	<b>13,893</b>	<b>15,509</b>	<b>14,828</b>	<b>14,810</b>	<b>13,294</b>	<b>14,604</b>	<b>13,664</b>	<b>0</b>	<b>0</b>	<b>0</b>	<b>0</b>	<b>116,440</b>	<b>4,768,247</b>	<b>191,792</b>	<b>197,756</b>
<b>Daily Avg.(mmscfd)</b>	511	496	500	494	478	443	471	441	0	0	0	0	479		525	542

## Monthly Production by Field and Well upto August- 2019



**HYDROCARBON UNIT**  
Energy & Mineral Resources Division

Figure

Well	Jan	Feb	Mar	Apr	May	Jun	Jul	Aug	Sep	Oct	Nov	Dec	Total	Cumulative	2018	2017
<b>Field : Begumganj</b>																
<b>Begumganj-3</b>	176	179	200	197	194	170	177	176					1,468	2,938	593	0
<b>Field Total:</b>	<b>176</b>	<b>179</b>	<b>200</b>	<b>197</b>	<b>194</b>	<b>170</b>	<b>177</b>	<b>176</b>	<b>0</b>	<b>0</b>	<b>0</b>	<b>0</b>	<b>1,468</b>	<b>2,938</b>	<b>593</b>	<b>0</b>
<b>Daily Avg.(mmscfd)</b>	6	6	6	7	6	6	6	6	0	0	0	0	6		2	0
<b>Field : Rupganj</b>																
<b>Rupganj-1</b>	0	0	0										0	679	0	679
<b>Field Total:</b>	<b>0</b>	<b>0</b>	<b>0</b>	<b>0</b>	<b>0</b>	<b>0</b>	<b>0</b>	<b>0</b>	<b>0</b>	<b>0</b>	<b>0</b>	<b>0</b>	<b>0</b>	<b>679</b>	<b>0</b>	<b>679</b>
<b>Daily Avg.(mmscfd)</b>	0	0	0	0	0	0	0	0	0	0	0	0	0		0	2
<b>Grand Total (in Bcf)</b>	83.29	72.98	80.78	78.59	81.55	71.84	80	74.67	0.00	0.00	0.00	0.00	623.6	17,066.13	964.7	979.8
<b>Daily Avg.(mmscfd)</b>	2,687	2,606	2,606	2,620	2,631	2,395	2576	2,409	0	0	0	0	2,566		2,643	2,684

## Monthly Condensate Production by Fields upto August 2019



Field Name	Jan-19	Feb-19	Mar-19	Apr-19	May-19	Jun-19	Jul-19	Aug-19	Sep-19	Oct-19	Nov-19	Dec-19	Total	Cumulative 000' bbl	2018	2017	2016
Bakhrabad	475	462	432	402	550	706	786	732					4,545	1,024	5,022	6,173	7,091
Daily Avg.	15	17	14	13	18	24	25	24	0	0	0	0	19		14	17	229
Bangura	9,547	8,321	8,755	8,380	8,381	7,905	9,092	7,736					68,117	1,134	94,737	103,198	103,416
Daily Avg.	308	297	282	279	270	264	293	250	0	0	0	0	280		260	283	3,336
Beani Bazar	4,207	3,945	4,525	4,262	4,394	4,198	4,268	4,212					34,009	1,601	51,187	68,202	56,146
Daily Avg.	136	141	146	142	142	140	138	27	0	0	0	0	140		140	187	1,811
Bibiyana	286,489	247,882	275,825	268,384	277,796	213,400	271,370	238,522					2,079,668	23,234	3,267,318	3,283,757	3,291,906
Daily Avg.	9,242	8,853	8,898	8,946	8,961	7,113	8,754	7,694	0	0	0	0	8,558		8,952	8,997	106,191
Chattak	0	0	0	0	0	0	0	0	0	0	0	0	0	4	0		
Daily Avg.	0	0	0	0	0	0	0	0	0	0	0	0	0		0		
Fenchuganj	126	80	121	108	90	48	41	27					640	116	1,625	2,462	6,138
Daily Avg.	4	3	4	4	3	2	1	1	0	0	0	0	3		4	7	198
Feni	0	0	0	0	0	0	0	0	0	0	0	0	0	110	0	0	0
Daily Avg.	0	0	0	0	0	0	0	0	0	0	0	0	0		0	0	0
Habiganj	721	610	776	681	642	571	564	550					5,115	135	5,612	3,955	4,143
Daily Avg.	23	22	25	23	21	19	18	18	0	0	0	0	21		15	11	134
Jalalabad	29,901	23,874	25,898	25,716	26,805	23,241	26,311	22,111					203,857	10,343	367,160	437,070	528,191
Daily Avg.	965	853	835	857	865	775	849	713	0	0	0	0	839		1,006	1,197	17,038
Kailas Tila	17,562	17,085	16,738	16,259	1,545	13,773	15,381	14,743					113,085	7,908	189,620	203,979	223,169
Daily Avg.	567	610	540	542	50	459	496	476	0	0	0	0	465		520	559	7,199
Kamta	Production Suspended									0	0			4			
Daily Avg.										0	0			0		0	0
Meghna	589	514	647	678	645	592	605	546					4,816	112	7,947	7,741	7,735
Daily Avg.	19	18	21	23	21	20	20	18	0	0	0	0	20		22	21	250
Moulavi Bazar	104	80	63	53	62	27	41	57					486	118	856	1,128	1,585
Daily Avg.	3	3	2	2	2	1	1	2	0	0	0	0	2		2	3	51

## Monthly Condensate Production by Fields upto August 2019



Field Name	Jan-19	Feb-19	Mar-19	Apr-19	May-19	Jun-19	Jul-19	Aug-19	Sep-19	Oct-19	Nov-19	Dec-19	Total	Cumulative	2018	2017	2016
														000' bbl			
Narshingdi	1,285	1,131	1,235	1,205	1,217	1,120	785	1,264					9,242	427	15,797	16,656	17,534
Daily Avg.	41	40	40	40	39	37	25	41	0	0	0	0	38		43	46	566
Rashidpur	1,213	1,038	1,083	1,069	1,084	1,542	1,602	1,645					10,275	786	14,393	10,723	14,938
Daily Avg.	39	37	35	36	35	51	52	53	0	0	0	0	42		39	29	482
Saldanadi	19	19	21	20	19	17	60	35					209	59	137	225	386
Daily Avg.	1	1	1	1	1	1	2	1	0	0	0	0	1		0	1	12
Sangu	0	0	0	0	0	0	0	0	0	0	0	0	0	37	0	0	0
Daily Avg.	0	0	0	0	0	0	0	0	0	0	0	0	0		0	0	0
Semutang	0	0	0	0	0	0	0	0					0	5	26	99	272
Daily Avg.	0	0	0	0	0	0	0	0	0	0	0	0	0		0	0	9
Shahbazpur	187	148	211	207	207	27	193	216					1,395	8	2,488	1,791	839
Daily Avg.	6	5	7	7	7	1	6	7	0	0	0	0	6		7	5	27
Srikail	3,226	2,920	3,143	2,913	2,950	2,796	2,834	2,776					23,557	152	33,765	37,879	21,075
Daily Avg.	104	104	101	97	95	93	91	90	0	0	0	0	97		93	104	680
Sundalpur	10	9	10	10	9	24	40	11					123	0	121	0	0
Daily Avg.	0	0	0	0	0	1	1	0	0	0	0	0	1		0	0	0
Sylhet	969	864	981	881	901	845	860	838					7,141	803	10,277	15,593	20,532
Daily Avg.	31	31	32	29	29	28	28	27	0	0	0	0	29		28	43	662
Titas	13,655	11,331	12,573	12,503	12,163	10,239	11,065	10,500					94,029	5,318	159,803	154,262	133,133
Daily Avg.	440	405	406	417	392	341	357	339	0	0	0	0	387		438	423	4,295
Begumganj	60	60	57	63	58	54	57	57					467	1	201	0	0
Daily Avg.	2	0	0	0	0	2	2	2	0	0	0	0	2		1	0	0
Rupganj	0	0	0	0	0	0	0	0					0	1	0	1,133	
Daily Avg.	0	0	0	0	0	0	0	0	0	0	0	0	0		0	3	
<b>Total (000'bbl)</b>	<b>370</b>	<b>320</b>	<b>353</b>	<b>344</b>	<b>340</b>	<b>281</b>	<b>346</b>	<b>307</b>	<b>0</b>	<b>0</b>	<b>0</b>	<b>0</b>	<b>2,661</b>	<b>53,438</b>	<b>4,228</b>	<b>4,356</b>	<b>4,438</b>
<b>Daily Avg. (000'bbl)</b>	<b>11.9</b>	<b>11.4</b>	<b>11.4</b>	<b>11.5</b>	<b>11.0</b>	<b>9</b>	<b>11.2</b>	<b>9.9</b>	<b>0.0</b>	<b>0.0</b>	<b>0</b>	<b>0</b>	<b>11</b>		<b>11.6</b>	<b>11.9</b>	<b>12.2</b>

Note: Historical condensate figure of Sangu available from 2006. Sylhet available from August 1964



## Monthly Water Production by Fields in July 2019



Field Name	Jan-19	Feb-19	Mar-19	Apr-19	May-19	Jun-19	Jul-19	Aug-19	Sep-19	Oct-19	Nov-19	Dec-19	Total	2,018	2,017
Bakhrabad	2,117	1,708	1,795	1,720	2,049	2,172	2,259	2,269					16,089	28,218	8,419
Daily Avg.	68	61	58	57	66	72	73	73	0	0	0	0	66	77	
Bangura	3,330	3,016	3,301	3,107	3,197	2,968	3,296	2,797					25,012	43,917	11,705
Daily Avg.	107	108	106	104	103	99	106	90	0	0	0	0	103	120	
Beani Bazar	9,793	8,568	9,561	9,283	10,305	10,427	11,230	11,705					80,873	109,854	24,865
Daily Avg.	316	306	308	309	332	348	362	378	0	0	0	0	333	301	
Bibiyana	16,351	14,524	15,756	15,544	16,508	15,623	17,001	16,277					127,585	194,651	47,219
Daily Avg.	527	519	508	518	533	521	548	525	0	0	0	0	525	533	
Chattak	0	0	0	0	0	0	0	0	0	0	0	0			
Daily Avg.	0	0	0	0	0	0	0	0	0	0	0	0	0	0	
Fenchuganj	6,323	3,006	3,558	3,470	2,712	2,861	3,603	2,667					28,198	74,969	6,700
Daily Avg.	204	107	115	116	87	95	116	86	0	0	0	0	116	205	
Feni	0	0	0	0	0	0	0	0	0	0	0	0	0	0	0
Daily Avg.	0	0	0	0	0	0	0	0	0	0	0	0	0	0	0
Habiganj	2,532	2,133	1,034	874	988	820	793	775					9,949	39,104	5,197
Daily Avg.	82	76	33	29	32	27	26	25	0	0	0	0	41	107	
Jalalabad	4,717	4,157	4,424	4,369	4,254	3,659	3,872	3,213					32,665	55,950	12,915
Daily Avg.	152	148	143	146	137	122	125	104	0	0	0	0	134	153	
Kailas Tila	3,934	3,519	3,851	3,562	1,772	3,011	5,189	3,128					27,966	43,233	6,809
Daily Avg.	127	126	124	119	57	100	167	101	0	0	0	0	115	118	
Kamta	0	0	0	0	0	0	0	0	0	0	0	0			
Daily Avg.	0	0	0	0	0	0	0	0	0	0	0	0		0	
Meghna	211	429	525	631	631	651	693	639					4,410	2,014	551
Daily Avg.	7	15	17	21	20	22	22	21	0	0	0	0	18	6	
Moulavi Bazar	1,379	710	735	550	427	189	200	237					4,428	13,965	754
Daily Avg.	44	25	24	18	14	6	6	8	0	0	0	0	18	38	
Narshingdi	883	798	888	879	939	806	466	884					6,543	10,374	2,645
Daily Avg.	28	29	29	29	30	27	15	29	0	0	0	0	27	28	
Rashidpur	13,567	12,332	13,512	12,940	13,181	12,638	13,173	13,322					104,665	137,406	30,969
Daily Avg.	438	440	436	431	425	421	425	430	0	0	0	0	431	376	
Saldanadi	129	115	126	127	131	127	137	140					1,032	813	387
Daily Avg.	4	4	4	4	4	4	4	5	0	0	0	0	4	2	

## Monthly Water Production by Fields in July 2019



**HYDROCARBON UNIT**  
Energy & Mineral Resources Division

Field Name	Jan-19	Feb-19	Mar-19	Apr-19	May-19	Jun-19	Jul-19	Aug-19	Sep-19	Oct-19	Nov-19	Dec-19	Total	2,018	2,017
Sangu	0	0	0	0	0	0	0	0	0	0	0	0	0	0	0
Daily Avg	0	0	0	0	0	0	0	0	0	0	0	0	0	0	0
Semutang	45	47	69	63	65	63	74	71					495	3,002	719
Daily Avg	1	2	2	2	2	2	2	2	0	0	0	0	2	8	
Shahbazpur	1,789	1,679	2,096	2,180	2,244	2,257	2,038	2,306					16,589	22,110	3,912
Daily Avg.	58	60	68	73	72	75	66	74	0	0	0	0	68	61	
Srikail	1,649	1,517	2,021	1,641	1,662	1,592	1,654	1,698					13,433	18,432	4,904
Daily Avg.	53	54	65	55	54	53	53	55	0	0	0	0	55	50	
Sundalpur	26	24	27	27	27	32	48	28					238	219	0
Daily Avg.	1	1	1	1	1	1	2	1	0	0	0	0	1	1	
Sylhet	2,312	2,022	2,221	2,156	2,234	2,511	4,664	5,098					23,218	20,362	1,298
Daily Avg.	75	72	72	72	72	84	150	164	0	0	0	0	96	56	
Titas	49,706	45,683	50,613	49,852	54,221	50,778	53,773	54,016					408,642	556,608	126,334
Daily Avg.	1,603	1,632	1,633	1,662	1,749	1,693	1,735	1,742	0	0	0	0	1,682	1,525	
Begumganj	69	54	61	59	59	67	66	56					490	207	0
Daily Avg.	2	2	2	2	2	2	2	2	0	0	0	0	2	1	
Rupganj	0	0	0	0	0	0	0	0					0	0	34
Daily Avg.	0	0	0	0	0	0	0	0	0	0	0	0	0	0	0
<b>Total (000'bl)</b>	<b>120,860</b>	<b>106,040</b>	<b>116,173</b>	<b>113,034</b>	<b>117,606</b>	<b>113,251</b>	<b>124,229</b>	<b>121,326</b>	<b>0</b>	<b>0</b>	<b>0</b>	<b>0</b>	<b>932,520</b>	<b>1,375,408</b>	<b>296</b>
<b>Daily Avg. (000'bb)</b>	<b>3,899</b>	<b>3,787</b>	<b>3,748</b>	<b>3,768</b>	<b>3,794</b>	<b>3,775</b>	<b>4,007</b>	<b>3,914</b>	<b>0</b>	<b>0</b>	<b>0</b>	<b>0</b>	<b>3,838</b>	<b>3,768</b>	<b>1</b>

## Conditions of Field and Well upto Aug 2019



Well	company	well type	Discovery	production start	Drilled depth (ft)	Pressure	Pressure type	Completion Zone
<b>Field : Bakharabad</b>								
BKB-1	BGFCL	Vertical	1969	June,1969	9309		FWHP	J
BKB-2	BGFCL	Directional	1969	October,1981	7496	248-274	FWHP	G
BKB-3	BGFCL	Directional	1969	April,1982	9339	356-412	FWHP	G
BKB-4	BGFCL	Directional	1969	June,1982	9430			D
BKB-5	BGFCL	Directional	1969	Sept,1982	9675	1555-1646	FWHP	B
BKB-6	BGFCL	Directional	1969	March,1989	8785			J
BKB-7	BGFCL	Directional	1969	July,1989	8605		FWHP	J
BKB-8	BGFCL	Directional	1969	Sept,1989	8840	490-523	FWHP	J
BKB-9	BGFCL	Vertical	1969	August,2013	8318	1005-1097	FWHP	G
BKB-10	BGFCL	Directional	1969	June,2016	9291	1010-1102	FWHP	K
<b>Field : Bangura</b>								
Bangura-1	Tullow		2004			887-940	FWHP	D
Bangura-2	Tullow		2004			587-685	FWHP	D/E
Bangura-3	Tullow		2004			719-789	FWHP	D
Bangura-6	Tullow		2004			708-780	FWHP	D
Bangura-5	Tullow		2004			579-621	FWHP	D
<b>Field : Beani Bazar</b>								
BB-1	SGFL		1981	July,1999	13480	580-620	SIWHP	Upper
BB-2	SGFL		1981	July,1999	12048	3210-3220	FWHP	Upper
<b>Field : Bibiyana</b>								
BY-1	Chevron		1998			1547-2007	FWHP	BB60, BB66
BY-2	Chevron		1998			1313-1390	FWHP	BB60, BH20A, BH20E
BY-3	Chevron		1998			1363-1403	FWHP	BB70
BY-4	Chevron		1998			1330-1390	FWHP	BH10
BY-5	Chevron		1998			1254-1299	FWHP	BH20A, BH20B, BH20C, BH20D
BY-6	Chevron		1998			1250-1486	FWHP	BB70
BY-7	Chevron		1998			1454-1566	FWHP	BH10
BY-8	Chevron		1998			1270-1297	FWHP	BH20A, BH20B
BY-9	Chevron		1998			1243-1273	FWHP	BH10
BY-10	Chevron		1998			1465-1533	FWHP	BB60
BY-11	Chevron		1998			1260-1284	FWHP	BH20A, BH20B
BY-12	Chevron		1998			1259-1332	FWHP	BB70
BY-13	Chevron		1998			1300-1356	FWHP	BH20A, BH20B
BY-14	Chevron		1998			1342-1632	FWHP	BH20A, BH20B
BY-15	Chevron		1998			2189-2240	FWHP	BB60
BY-16	Chevron		1998			1381-1644	FWHP	BH10, BH20D

## Conditions of Field and Well upto Aug 2019



Well	company	well type	Discovery	production start	Drilled depth (ft)	Pressure	Pressure type	Completion Zone
BY-17	<i>Chevron</i>		1998			2104-2229	<i>FWHP</i>	<i>BB60</i>
BY-18	<i>Chevron</i>		1998			1904-2218	<i>FWHP</i>	<i>BB60</i>
BY-19	<i>Chevron</i>		1998			1354-1477	<i>FWHP</i>	<i>BH10, BH20A</i>
BY-20	<i>Chevron</i>		1998			1248-1262	<i>FWHP</i>	<i>BH20D, BH20A, BH10</i>
BY-21	<i>Chevron</i>		1998			1333-1348	<i>FWHP</i>	<i>BH20A, BH20B, BH10</i>
BY-22	<i>Chevron</i>		1998			1552-1586	<i>FWHP</i>	<i>BB60</i>
BY-23	<i>Chevron</i>		1998			1739-2021	<i>FWHP</i>	<i>BH10, BH20A, BH20B, BH20C</i>
BY-24	<i>Chevron</i>		1998			1337-2091	<i>FWHP</i>	<i>BB60</i>
BY-25	<i>Chevron</i>		1998			1728-1857	<i>FWHP</i>	<i>BB60, BB66</i>
BY-26	<i>Chevron</i>		1998			1877-2094	<i>FWHP</i>	<i>BB60, BB64</i>
<b>Field : Chattak</b>								
Ch-1	SGFL		1959					
<b>Field : Fenchuganj</b>								
Fenchuganj-2	BAPEX		1988	May, 2004				
Fenchuganj-3	BAPEX		1988	February, 2005		2004-2010		<i>upper</i>
Fenchuganj-4	BAPEX		1988			2037-2065		
<b>Field : Feni</b>								
Feni-1	BAPEX		1981					
Feni-2	BAPEX		1981					
Feni-3	BAPEX		1981					
Feni-4	BAPEX		1981					
Feni-5	BAPEX		1981					
<b>Field : Habiganj</b>								
Hbj-1	BGFCL	<i>Vertical</i>	1963	Feb,1969	11500		<i>FWHP</i>	<i>upper</i>
Hbj-2	BGFCL	<i>Vertical</i>	1963	Feb,1969	5100		<i>FWHP</i>	<i>upper</i>
Hbj-3	BGFCL	<i>Vertical</i>	1963	July,1985	5282	1478-1486	<i>FWHP</i>	<i>upper</i>
Hbj-4	BGFCL	<i>Vertical</i>	1963	May,1985	5249	1460-1467	<i>FWHP</i>	<i>upper</i>
Hbj-5	BGFCL	<i>Directional</i>	1963	Feb,1992	11552	1440-1446	<i>FWHP</i>	<i>upper</i>
Hbj-6	BGFCL	<i>Vertical</i>	1963	Feb,1992	5515	1375-1379	<i>FWHP</i>	<i>upper</i>
Hbj-7	BGFCL	<i>Vertical</i>	1963	April,2000	10236	1331-1139	<i>FWHP</i>	<i>upper</i>
Hbj-8	BGFCL	<i>Vertical</i>	1963	May, 2000	5280			<i>upper</i>
Hbj-9	BGFCL	<i>Vertical</i>	1963	July,1998	5249			<i>upper</i>
Hbj-10	BGFCL	<i>Vertical</i>	1963	Apr, 2000	5133	1322-1331	<i>FWHP</i>	<i>upper</i>
Hbj-11	BGFCL	<i>Vertical</i>	1963	February,2008	10499	1417-1423	<i>FWHP</i>	<i>upper</i>
<b>Field : Jalalabad</b>								
JB-1	<i>Chevron</i>		1989			1333-1436	<i>FWHP</i>	<i>BB60, BB50</i>

## Conditions of Field and Well upto Aug 2019



Well	company	well type	Discovery	production start	Drilled depth (ft)	Pressure	Pressure type	Completion Zone
JB-2	<i>Chevron</i>		1989			1279-1294	<i>FWHP</i>	<i>BB50, BB60</i>
JB-3	<i>Chevron</i>		1989			1332-1375	<i>FWHP</i>	<i>BB50, BB60</i>
JB-4	<i>Chevron</i>		1989			1365-1425	<i>FWHP</i>	<i>BB60</i>
JB-6	<i>Chevron</i>		1989			1354-1362	<i>FWHP</i>	<i>BB60, BB50</i>
JB-7	<i>Chevron</i>		1989			1666-1679	<i>FWHP</i>	<i>BB20</i>
JB-8	<i>Chevron</i>		1989			1362-1370	<i>FWHP</i>	<i>BB50, BB60</i>
<b>Field : Kailas Tila</b>								
KTL-1	<i>SGFL</i>		1962	<i>June, 1983</i>	<i>12417</i>	<i>0</i>	<i>SIWHP</i>	
KTL-2	<i>SGFL</i>		1962	<i>Feb, 1995</i>		<i>2225-2230</i>	<i>FWHP</i>	
KTL-3	<i>SGFL</i>		1962	<i>March, 1995</i>		<i>2470-2495</i>	<i>FWHP</i>	
KTL-4	<i>SGFL</i>		1962	<i>March, 1997</i>		<i>2360-2410</i>	<i>FWHP</i>	
KTL-5	<i>SGFL</i>		1962	<i>Sep, 2006</i>		<i>0</i>	<i>SIWHP</i>	
KTL-6	<i>SGFL</i>		1962	<i>Aug, 2007</i>		<i>2490-2495</i>	<i>FWHP</i>	
KTL-7	<i>SGFL</i>		1962			<i>0</i>	<i>SIWHP</i>	
<b>Field : Kamta</b>								
Kamta-1	<i>BGFCL</i>	<i>Vertical</i>	1981	<i>july,1982</i>	<i>11857</i>			<i>N/A</i>
<b>Field : Meghna</b>								
M-1	<i>BGFCL</i>	<i>Vertical</i>	2004	<i>july,1990</i>	<i>10069</i>	<i>1400-1450</i>	<i>FWHP</i>	<i>A,E,F &amp; G</i>
<b>Field : Moulavi Bazar</b>								
MV Bazar-2	<i>Chevron</i>		1997			<i>800-820</i>	<i>FWHP</i>	<i>BB70</i>
MV Bazar-3	<i>Chevron</i>		1997			<i>800-820</i>	<i>FWHP</i>	<i>BB70</i>
MV Bazar-4	<i>Chevron</i>		1997			<i>946-952</i>	<i>FWHP</i>	<i>BB20</i>
MV Bazar-5	<i>Chevron</i>		1997			<i>0</i>	<i>SIWHP</i>	<i>BB60</i>
MV Bazar-6	<i>Chevron</i>		1997			<i>822-890</i>	<i>FWHP</i>	<i>BB20</i>
MV Bazar-7	<i>Chevron</i>		1997			<i>844-901</i>	<i>FWHP/SIWHP</i>	<i>BB20</i>
MV Bazar-9	<i>Chevron</i>		1997			<i>0</i>	<i>SIWHP</i>	<i>BB46, BB48, BB60</i>
<b>Field : Narshingdi</b>								
N-1	<i>BGFCL</i>	<i>vertical</i>	1990	<i>october,1990</i>	<i>11320</i>	<i>1143-1197</i>	<i>FWHP</i>	<i>BL</i>
N-2	<i>BGFCL</i>	<i>vertical</i>	1990	<i>february,2007</i>	<i>10778</i>	<i>1015-1097</i>	<i>FWHP</i>	<i>BL</i>
<b>Field : Rashidpur</b>								
RP-1	<i>SGFL</i>		1960			<i>1290-1291</i>	<i>FWHP</i>	<i>Upper</i>
RP-2	<i>SGFL</i>		1960			<i>73</i>	<i>SIWHP</i>	<i>Lower</i>
RP-3	<i>SGFL</i>		1960			<i>1548-1568</i>	<i>FWHP</i>	<i>Lower</i>
RP-4	<i>SGFL</i>		1960			<i>1450-1655</i>	<i>FWHP</i>	<i>Lower</i>
RP-5	<i>SGFL</i>		1960			<i>2291</i>	<i>SIWHP</i>	<i>Lower</i>
RP-6	<i>SGFL</i>		1960			<i>870</i>	<i>SIWHP</i>	<i>A</i>

## Conditions of Field and Well upto Aug 2019



Well	company	well type	Discovery	production start	Drilled depth (ft)	Pressure	Pressure type	Completion Zone
RP-7	SGFL		1960			1308-1338	FWHP	Lower
RP-8	SGFL		1960			1600-1625	FWHP	Upper
<b>Field : Salda Nadi</b>								
Salda-1	BAPEX		1995					
Salda-2	BAPEX		1995					
Salda-3	BAPEX	Directional	1995	February, 2012		639-640, 698-700		Upper/Lower
Salda-4	BAPEX		1995					
<b>Field : Sangu</b>								
Sangu-1	BGFCL		1996					
Sangu-3z	BGFCL		1996					
Sangu-4	BGFCL		1996					
Sangu-5	BGFCL		1996					
Sangu-7	BGFCL		1996					
Sangu-8	BGFCL		1996					
Sangu-9	BGFCL		1996					
Sangu-10	BGFCL		1996					
Sangu-11	BGFCL		1996					
<b>Field : Semutang</b>								
Semutang-5	BAPEX		1967			280-508		Lower Zone
Semutang-6	BAPEX		1967			750-1302		
<b>Field : Shahbazpur</b>								
Shahbazpur-1	BAPEX		1995	May, 2009		2310-3543		Lower Zone
Shahbazpur-2	BAPEX		1995			3541-4133		Lower Zone
Shahbazpur-3	BAPEX		1995			4300		Upper Zone
Shahbazpur-4	BAPEX		1995			4250		Upper Zone
<b>Field : Srikail</b>								
Srikail-2	BAPEX		2012			990-1016		Upper & Lower D
Srikail-3	BAPEX		2012			981-1043		Upper & Lower D
Srikail-4	BAPEX		2012			1018-1068		Upper & Lower D
<b>Field : Sundalpur</b>								
Sundalpur -1	BAPEX		2011					
Sundalpur -2	BAPEX		2011					
<b>Field : Sylhet</b>								
Sylhet-3	SGFL		1955	Aug, 1958				
Sylhet-6	SGFL		1955	Aug, 1964		800-850	SIWHP	
Sylhet-7	SGFL		1955	Apr, 2005		1750-1820	FWHP	Lower Bokabil

## Conditions of Field and Well upto Aug 2019

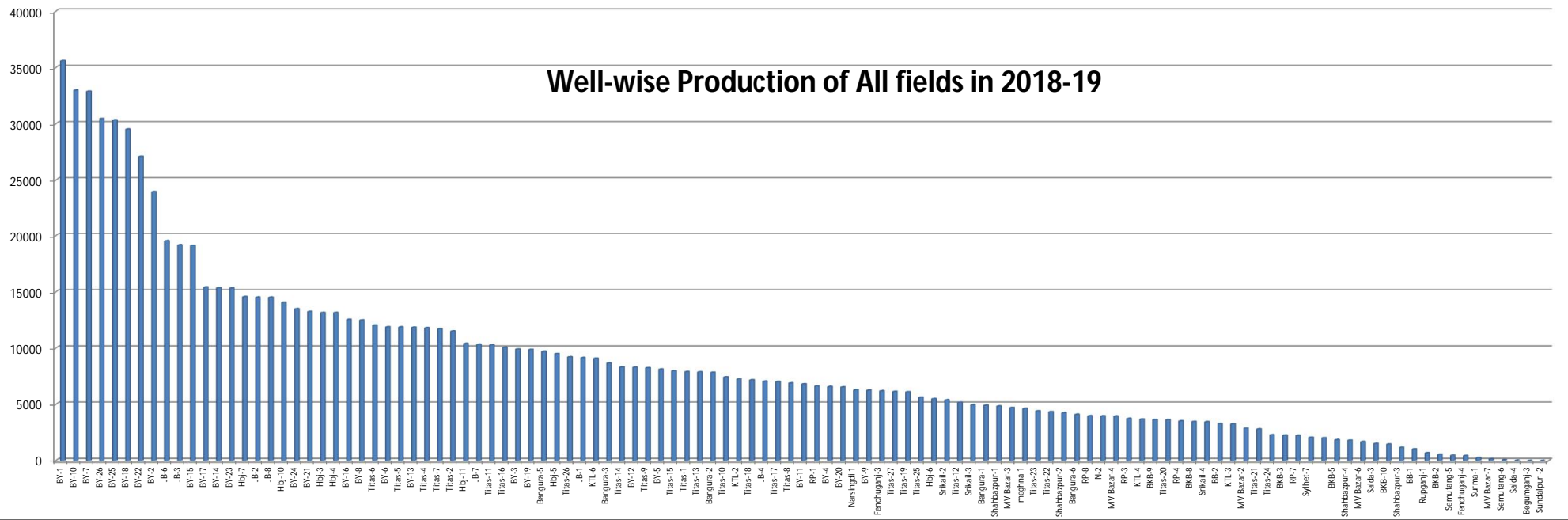


**HYDROCARBON UNIT**

Energy & Mineral Resources Division

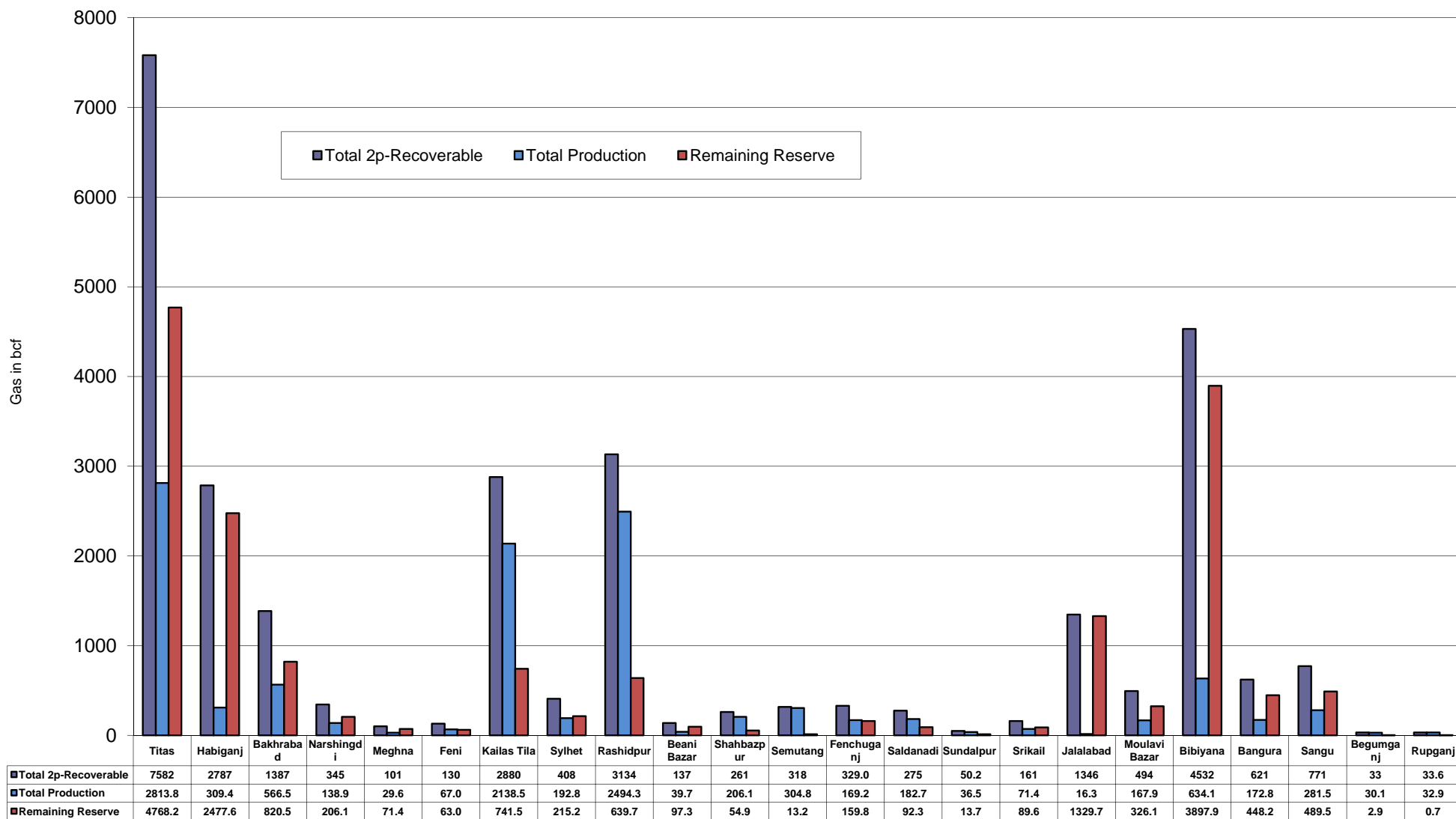
Well	company	well type	Discovery	production start	Drilled depth (ft)	Pressure	Pressure type	Completion Zone
Surma-1	SGFL		1955	June, 2010		230	SIWHP	C & D
<b>Field : Titas</b>								
Titas-1	BGFCL	vertical	1962	Mar, 1969	12325	900-925	FWHP	A
Titas-2	BGFCL	vertical	1962	Fen, 1969	10574	960-1020	FWHP	A
Titas-3	BGFCL	vertical	1962	sept, 1969	9315	0	FWHP	A
Titas-4	BGFCL	vertical	1962	oct, 1969	9350	1020-1070	FWHP	A
Titas-5	BGFCL	Directional	1962	jan, 1981	10805	990-1035	FWHP	A
Titas-6	BGFCL	vertical	1962	Feb, 1984	10072	1195-1225	FWHP	A
Titas-7	BGFCL	Directional	1962	July, 1985	11006	1090-1160	FWHP	A
Titas-8	BGFCL	Directional	1962	sept, 1985	11760	1000-1030	FWHP	B & C
Titas-9	BGFCL	Directional	1962	jan, 1988	11893	1040-1085	FWHP	B & C
Titas-10	BGFCL	Directional	1962	may, 1988	12139	1140-1180	FWHP	A
Titas-11	BGFCL	vertical	1962	Jun, 1991	10462	1275-1310	FWHP	A
Titas-12	BGFCL	Directional	1962	July, 2002	9873	1465-1500	FWHP	A
Titas-13	BGFCL	Directional	1962	June, 2000	11487	1085-1115	FWHP	A
Titas-14	BGFCL	Directional	1962	June, 2000	11004	1200-1250	FWHP	A
Titas-15	BGFCL	vertical	1962	may, 2006	10446	0	FWHP	A
Titas-16	BGFCL	Directional	1962	dec, 2005	11673	1205-1225	FWHP	A
Titas-17	BGFCL	vertical	1962	feb, 2013	9424	1145-1175	FWHP	A
Titas-18	BGFCL	Directional	1962	august, 2013	10932	1165-1190	FWHP	A
Titas-19	BGFCL	Directional	1962	may, 2014	12730	1365-1415	FWHP	A
Titas-20	BGFCL	Directional	1962	oct, 2013	11585	1370-1440	FWHP	A
Titas-21	BGFCL	Directional	1962	dec, 2013	11631	1260-1285	FWHP	A
Titas-22	BGFCL	Directional	1962	march, 2014	11926	990-1025	FWHP	A
Titas-27	BGFCL	Directional	1962	april, 2014	10292	1245-1265	FWHP	A
Titas-23	BGFCL	Directional	1962	feb, 2017	11988	2265-2340	FWHP	C
Titas-24	BGFCL	Directional	1962	oct, 2016	12686	1120-1245	FWHP	C
Titas-25	BGFCL	vertical	1962	march, 2016	11680	1300-1340	FWHP	A
Titas-26	BGFCL	Directional	1962	july, 2016	12618	1840-1875	FWHP	C
<b>Field : Begumganj</b>								
Begumganj-3	BAPEX		1977					
<b>Field : Rupganj</b>								
Rupganj-1	BAPEX		2014			38-88		

## Well-wise Production of All fields in 2018-19

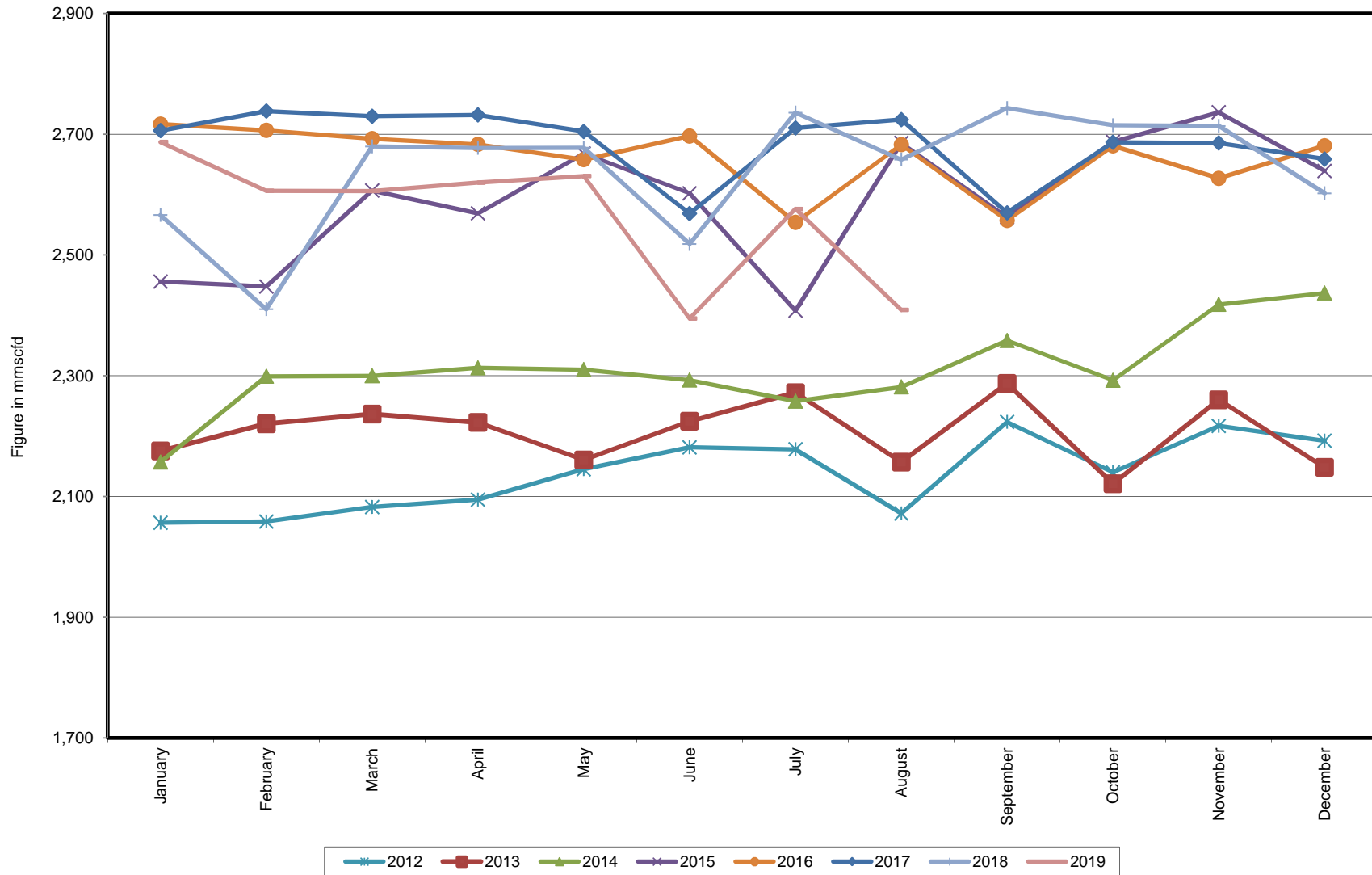




## Reserve, Production and Remaining Reserve as of August 2019



## Daily Avg. Production From January 2012 to August 2019



## Field Wise Daily Avg. Production August 2019

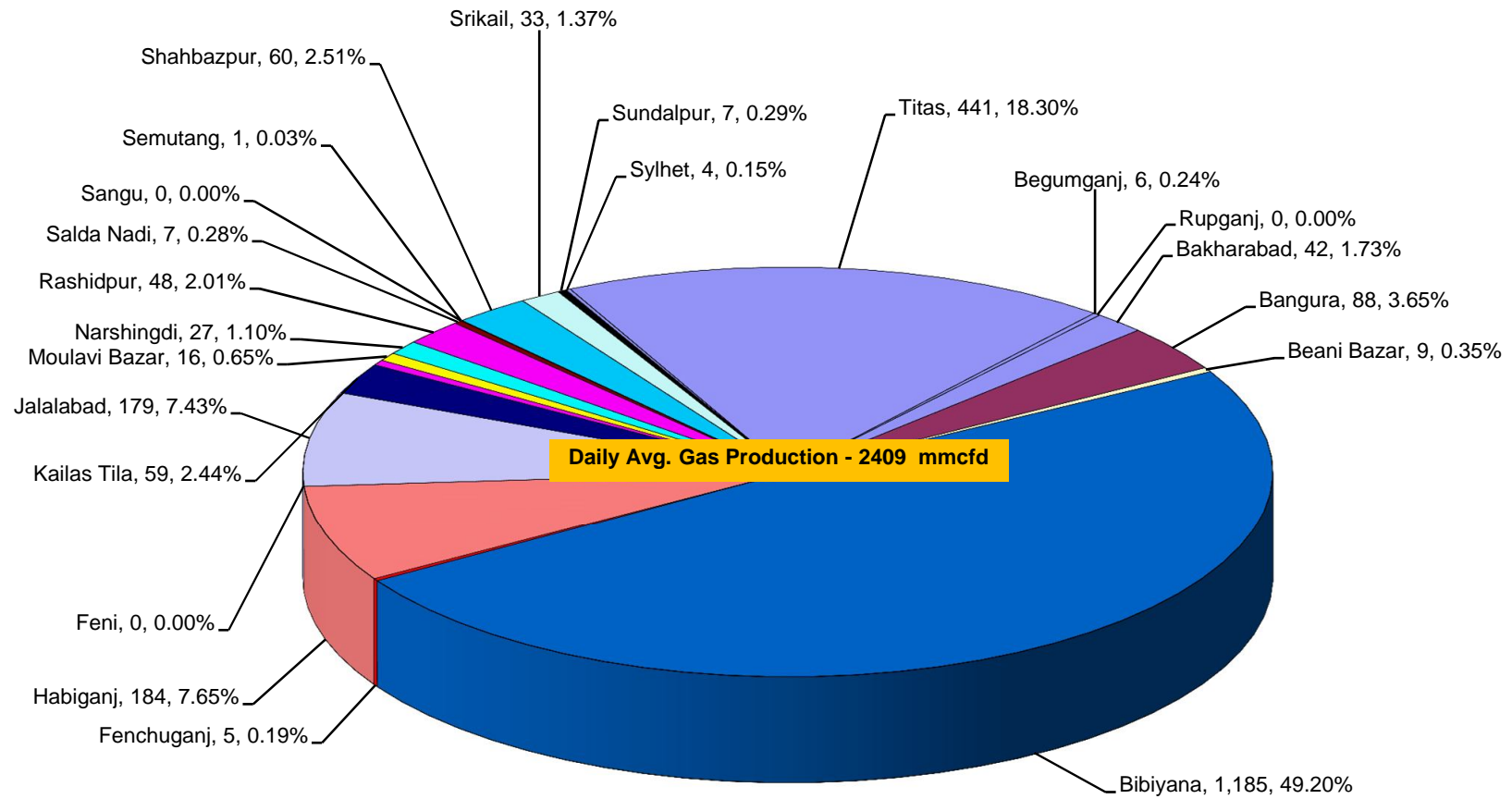
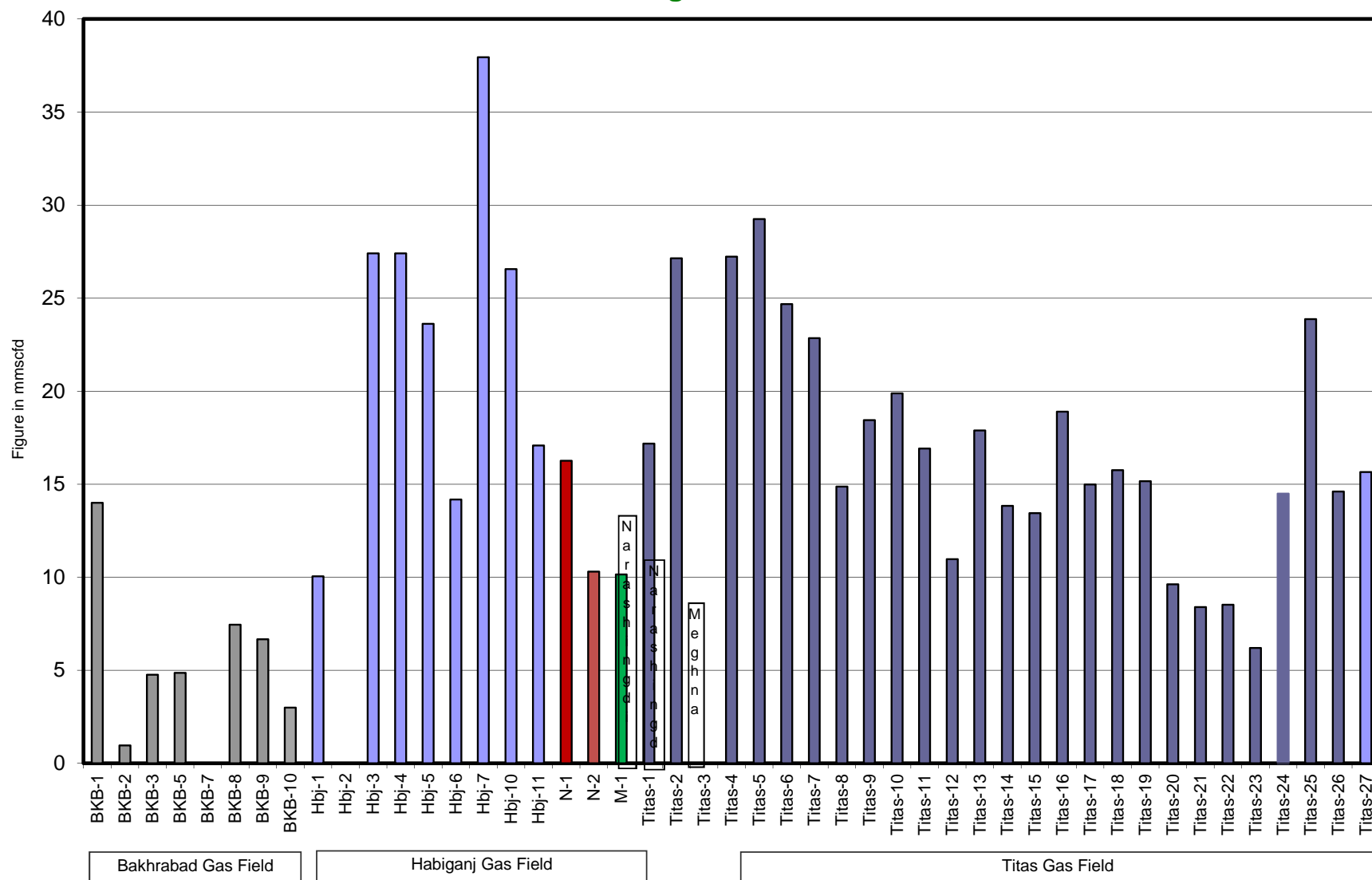


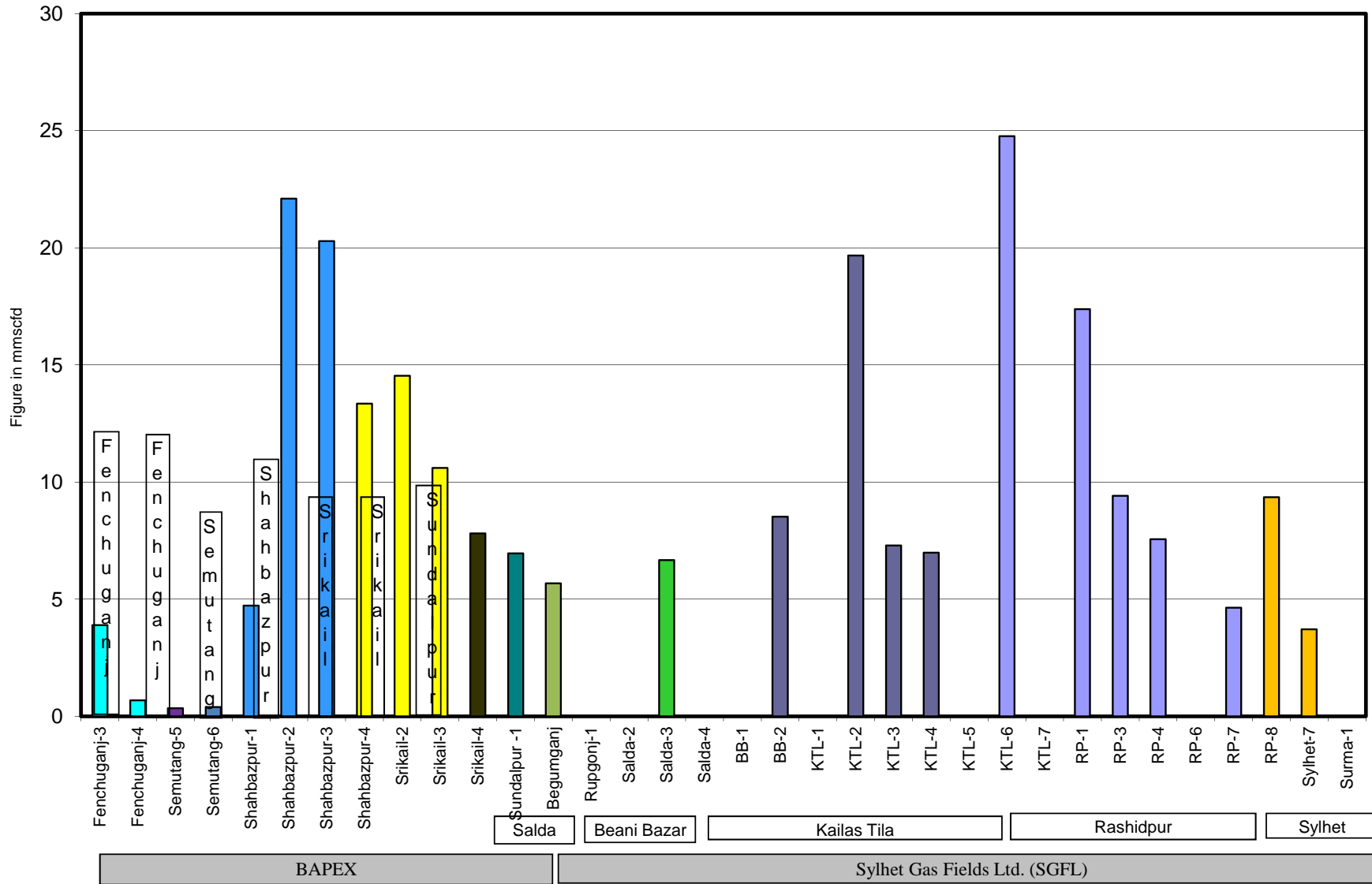
Figure in mmcf  
and % of total production

## Wellwise Daily Avg. Production- BGFCL August 2019

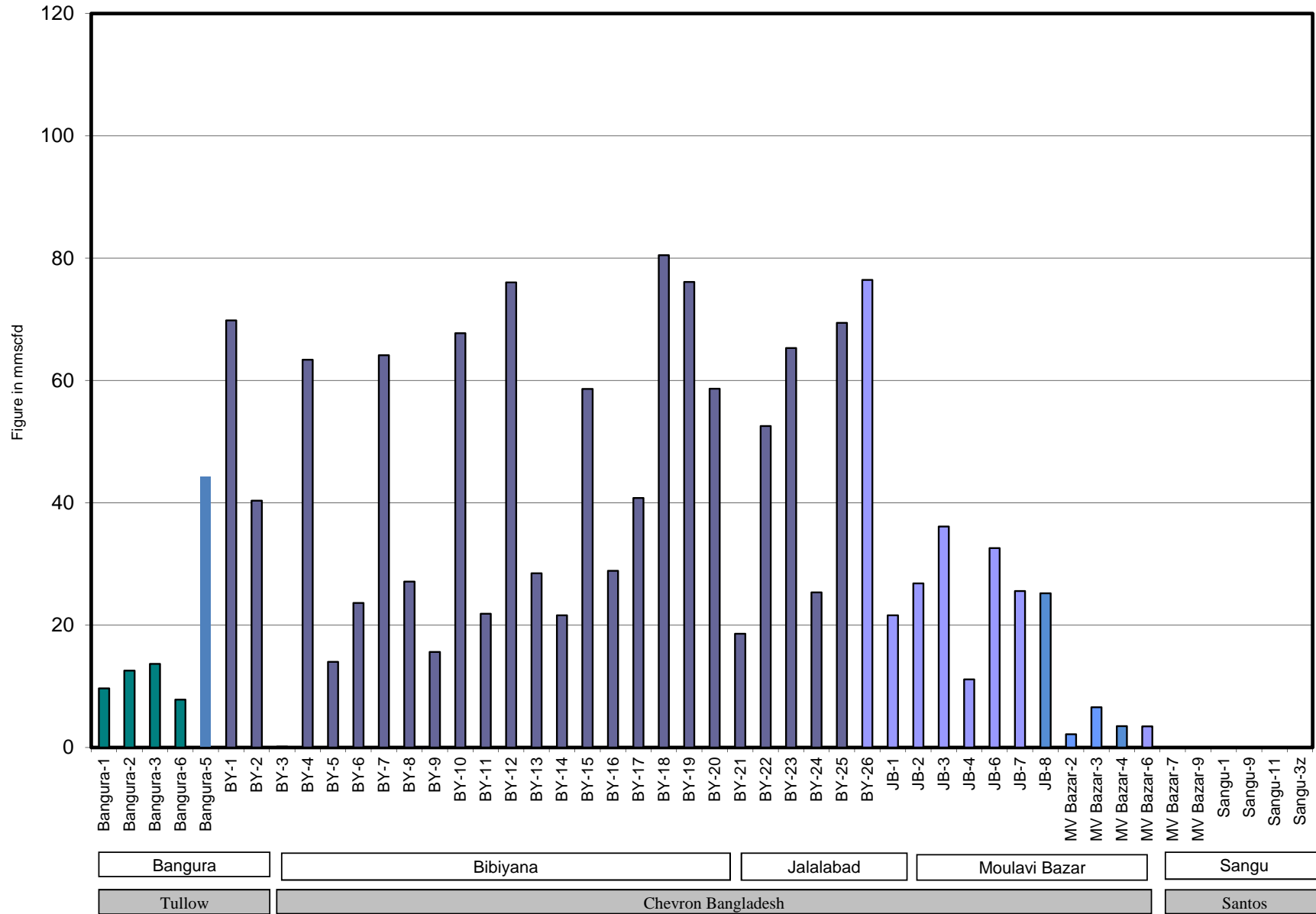


Bangladesh Gas Fields Co. Ltd. (BGFCL)

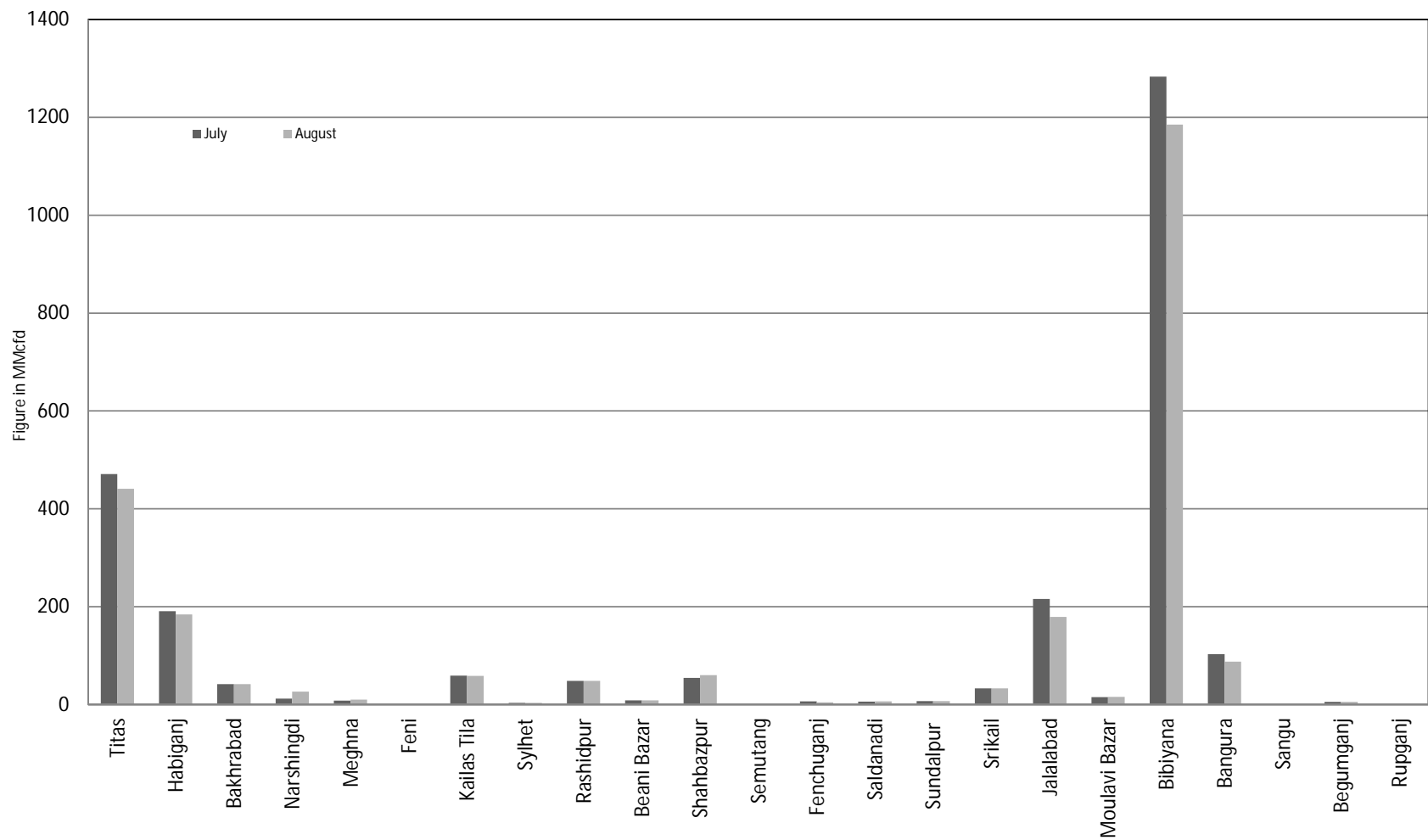
# Wellwise Daily Avg. Production- Bapex and SGFL August 2019



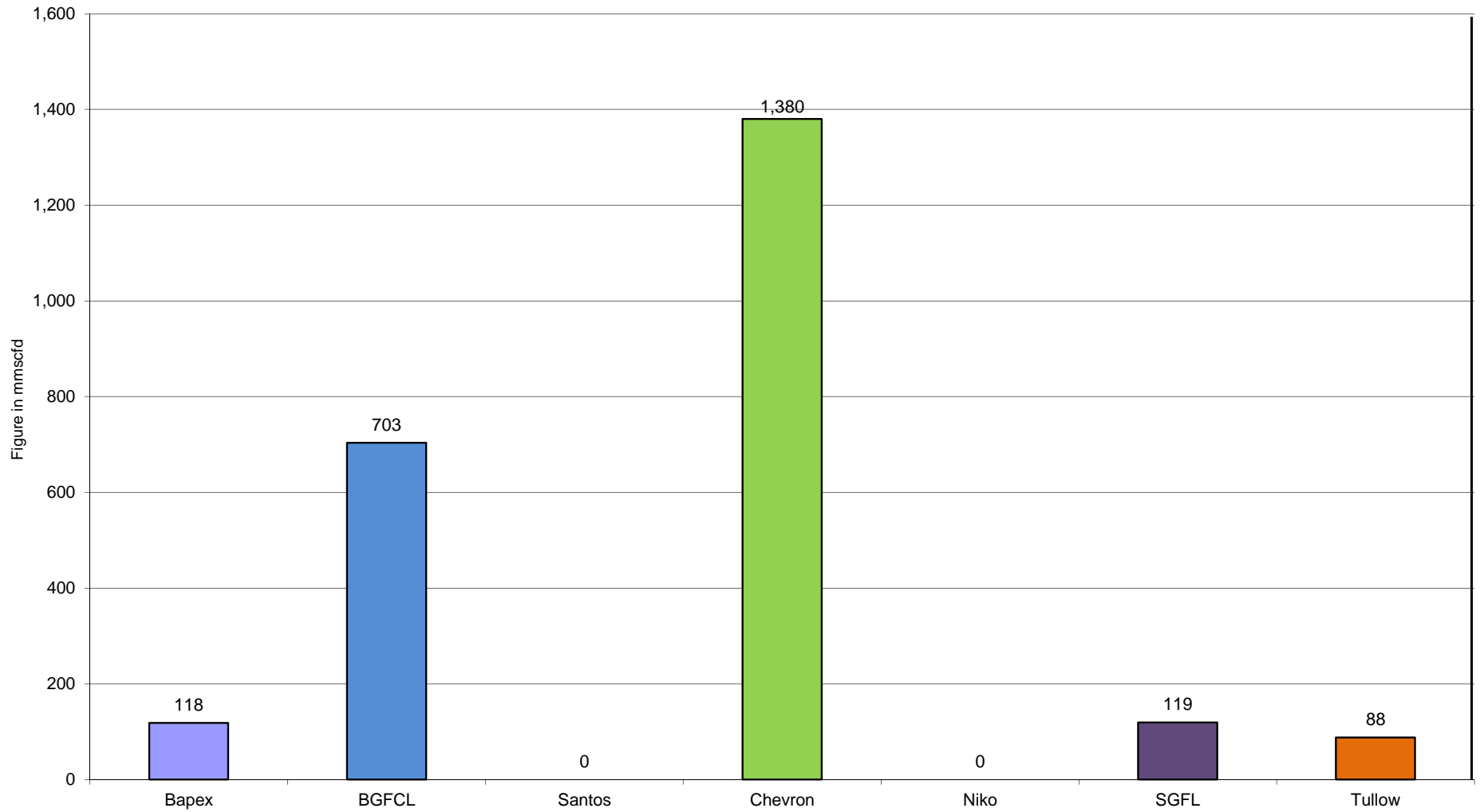
# Wellwise Daily Avg. Production- IOC and JVA August 2019



## Comparison of fieldwise daily avg. Gas production between July 2019 & August 2019

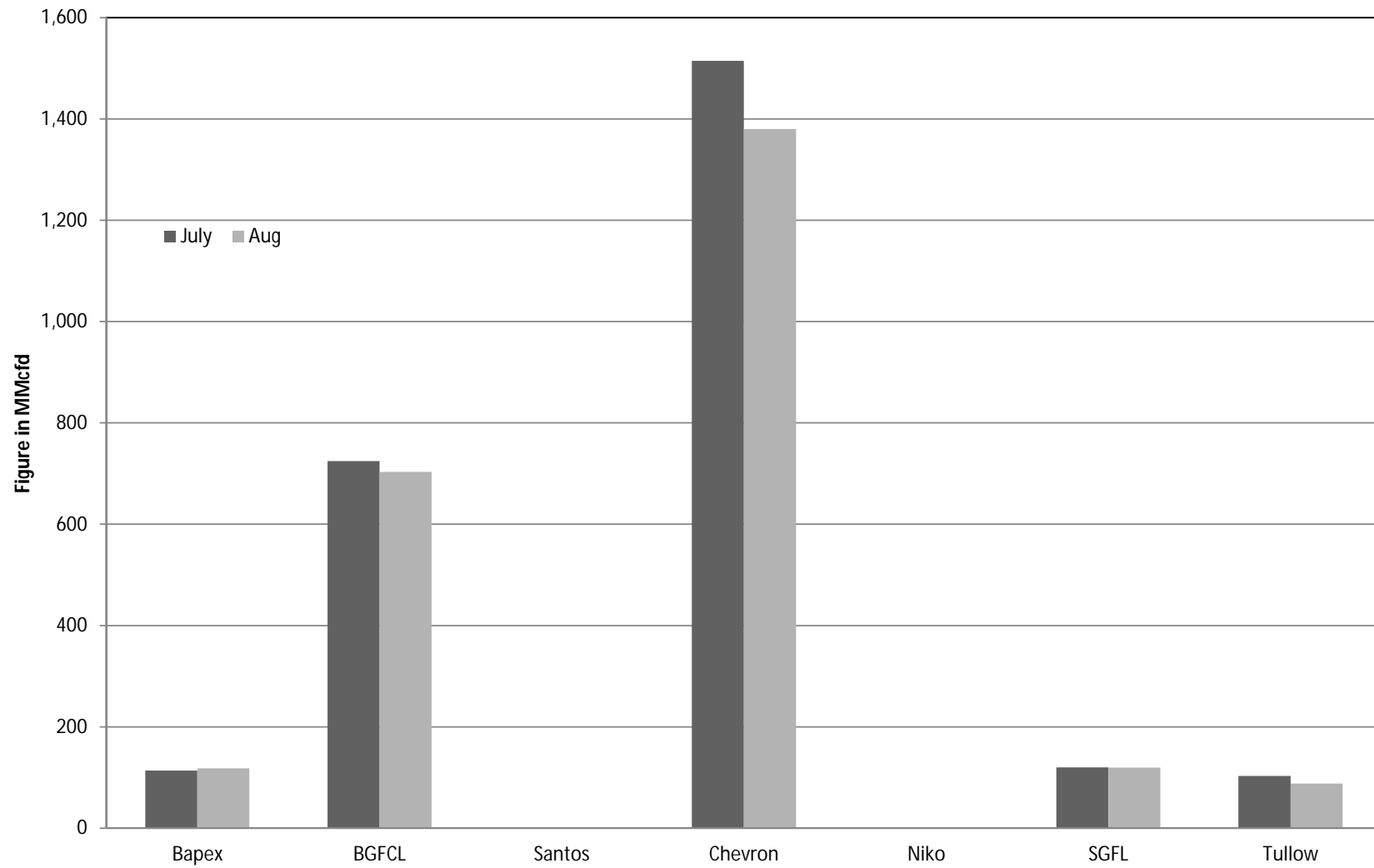


## Daily Avg. Production by Operators August 2019

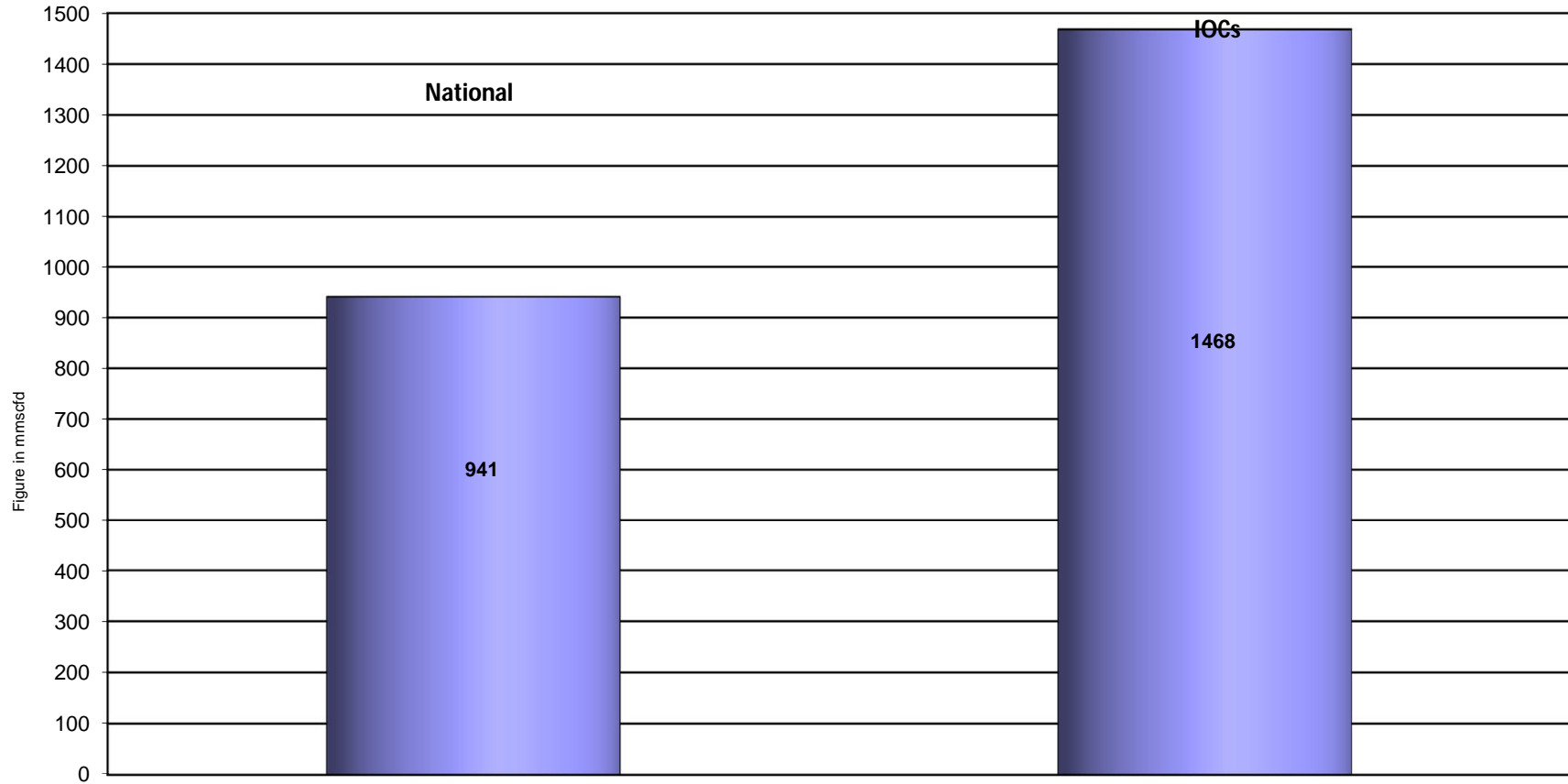




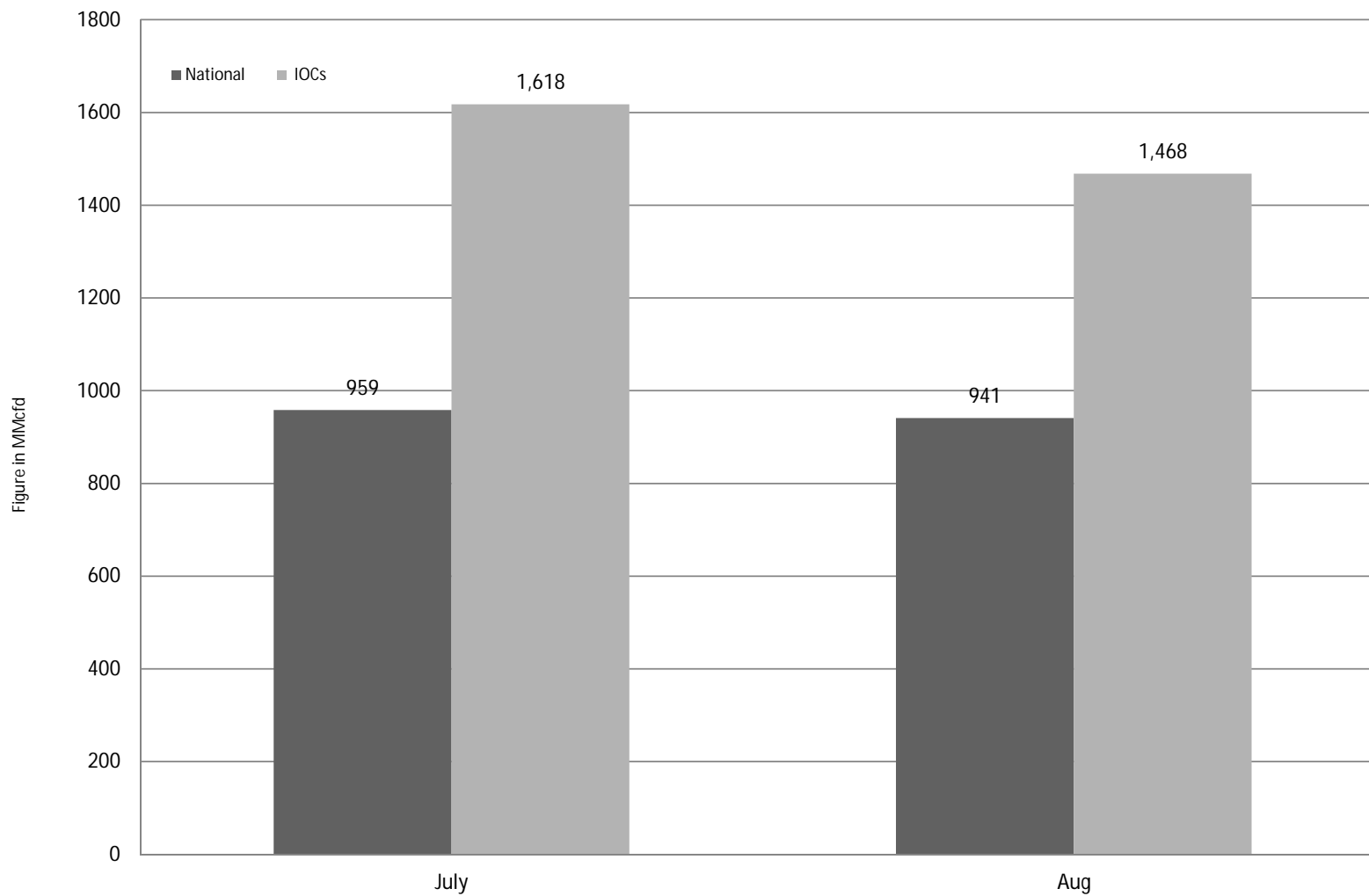
### Comparison of operatorwise daily avg. Gas production between July 2019 & August 2019



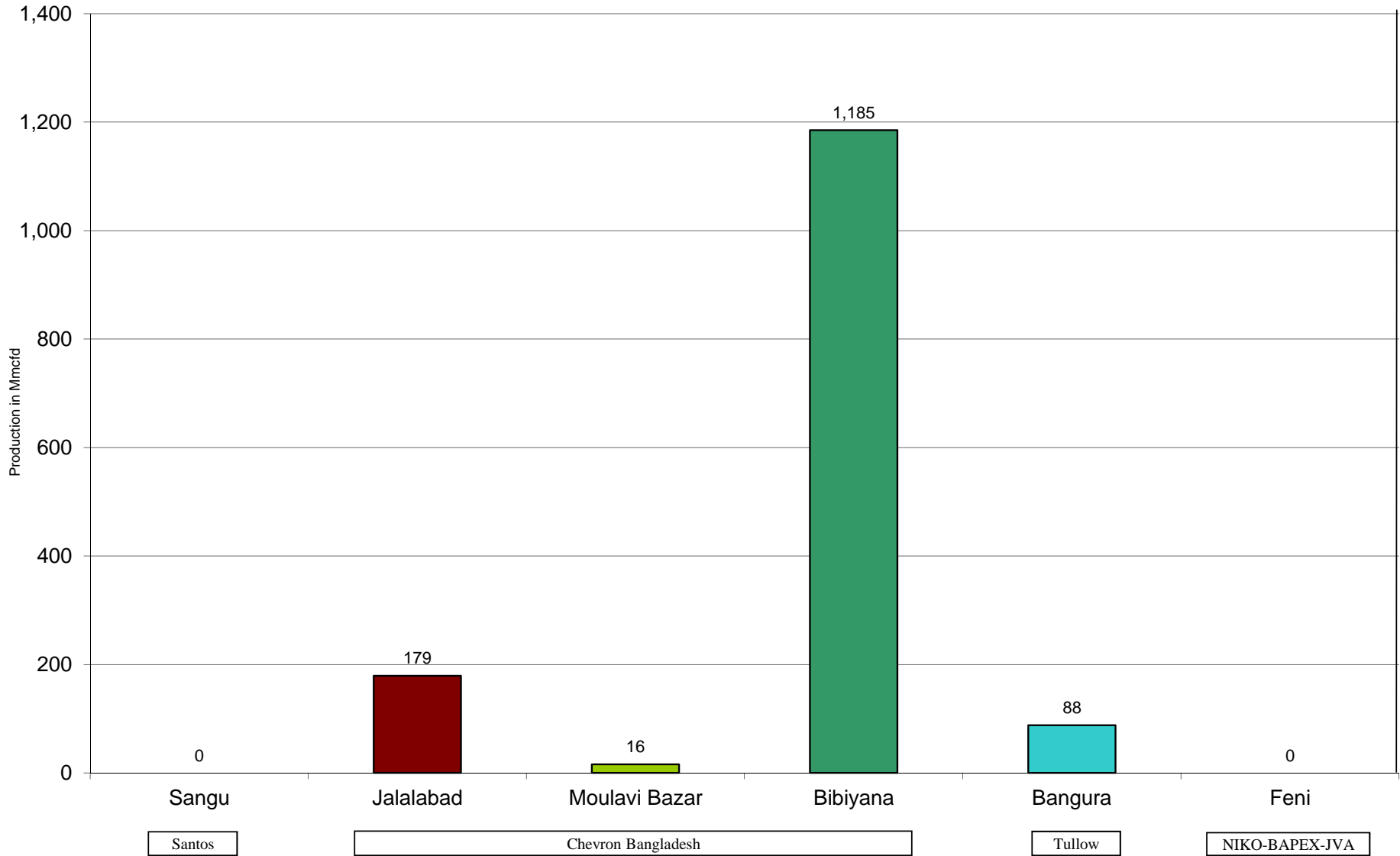
## Daily Avg. Production - National Vs. IOCs August 2019



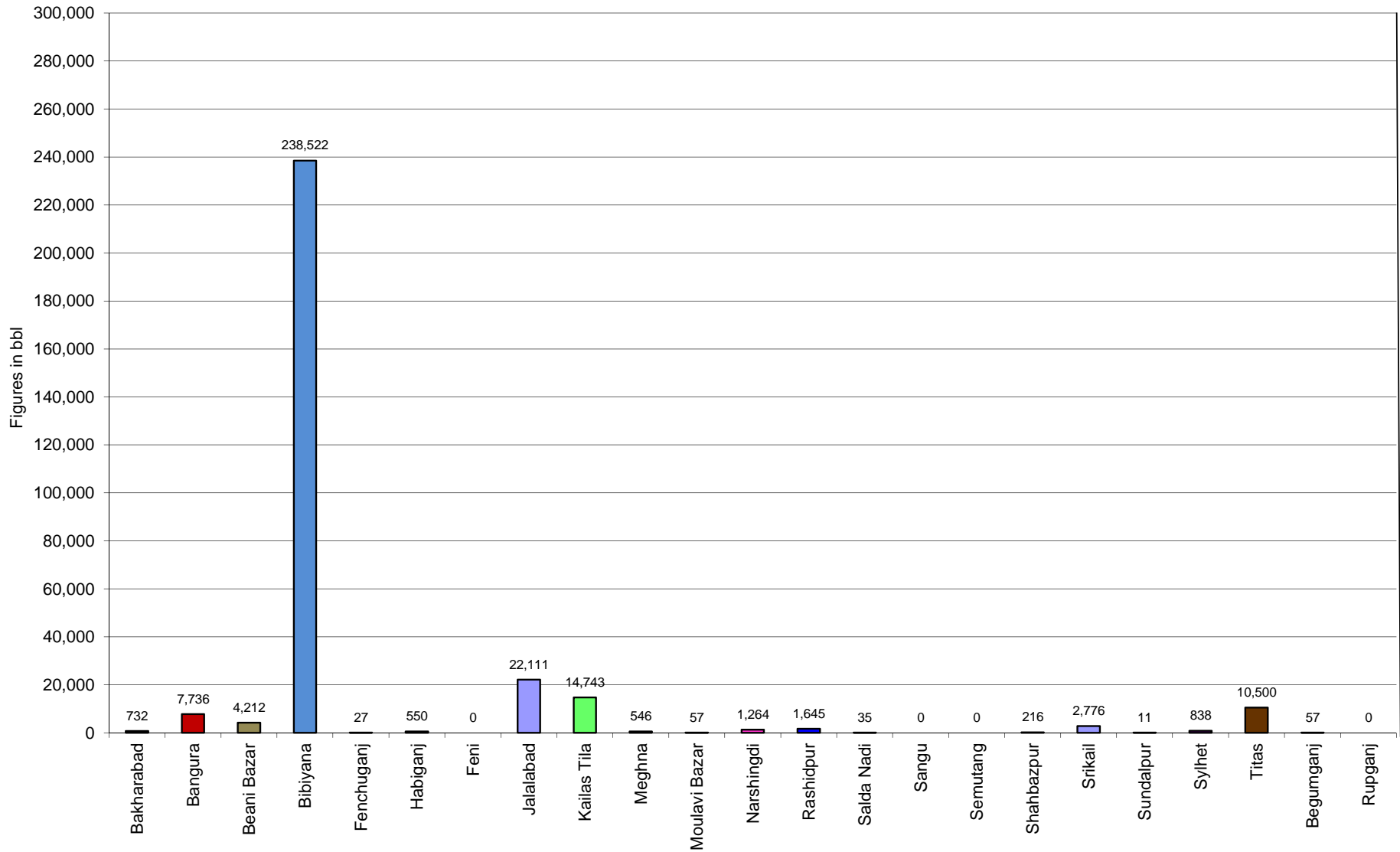
## Comparison of daily avg. Gas production - National vs IOC's between July 2019 & August 2019



## Daily Avg. Production - IOC and JVA August 2019



## Monthly Condensate Production August 2019



## Field wise Coal Reserve in Bangladesh

SI No.	Coal Basins	Proved (Mt)	Indicated (Mt)	Inferred (Mt)	Total (Mt)
1	Barapukuria	114.32	211.33	21.06+(43-64)*	346.71+(43-64)*
2	Phulbari	288	226	58	572
3	Khalashpir	-	297.57	225.92	523.49
4	Jamalganj	-	-	1053.9	1053.9
5	Dighipara	-	105	495	600
	<b>Total</b>	<b>402.32</b>	<b>839.9</b>	<b>1896.88-1917.88</b>	<b>3139.10-3160.10</b>

*\*Resources of VI Seam in second syncline are towards SW of main basin, after Wardell Armstrong*

*NOTE: Reserve Figure based on Coal Sector Development Strategy (Final), HCU, PwC*



## Summary of Reserve and Production of Barapukuria Coal Mine As of 31 August 2019

<b>Coal Initially Place (Proven + Probable)</b>	<b>346,710 kT</b>	<b>346.71 MT</b>
<b>Total Reserve of Seam VI</b>	<b>285,410 kT</b>	<b>285.41 MT</b>
<b>Recoverable from Seam VI Central part(Proven + Probable)</b>	<b>16,540 kT*</b>	<b>16.54 MT</b>
<b>Coal Production in August 2019</b>	<b>98.96 kT</b>	<b>0.10 MT</b>
<b>Cumulative Production as of August 2019</b>	<b>10,973 kT</b>	<b>10.97 MT</b>
<b>Remaining Reserve</b>	<b>5,567 kT</b>	<b>5.57 MT</b>

*NOTE: Reserve figure based on Mines and Minerals Development Report ,HCU PwC*

\*Figure from BCMCL, M/S Wardell Armstrong. According to Mines and Minerals Development Report ,HCU, PwC this figure is 64.8 Mt

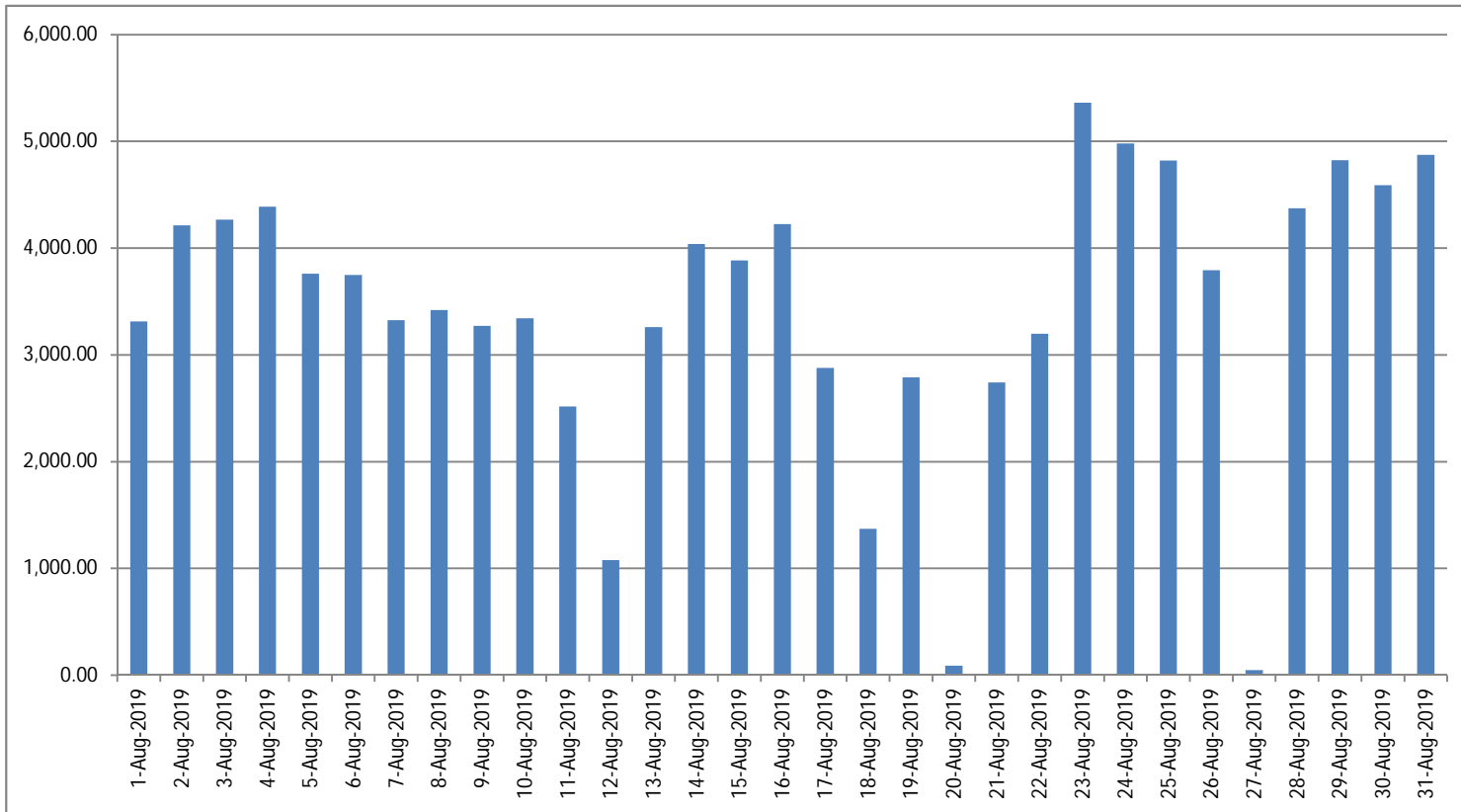


**Barapukuria Coal Mine-MPM and P Contract (BCMCL)**  
**Measurement Record: Surface Belt Weigher**  
**Measurement Period: August 2019**

Day wise data	Consortium Daily Output (ton)	Consortium Cumulative Total	BCMCL Daily Output	BCMCL Cumulative Total	Remarks
1-Aug-2019	3,312.75	3,312.75	3,312.75	3,312.75	
2-Aug-2019	4,214.25	7,527.00	4,214.25	7,527.00	
3-Aug-2019	4,268.25	11,795.25	4,268.25	11,795.25	
4-Aug-2019	4,388.50	16,183.75	4,388.50	16,183.75	
5-Aug-2019	3,761.00	19,944.75	3,761.00	19,944.75	
6-Aug-2019	3,749.50	23,694.25	3,749.50	23,694.25	
7-Aug-2019	3,324.25	27,018.50	3,324.25	27,018.50	
8-Aug-2019	3,420.75	30,439.25	3,420.75	30,439.25	
9-Aug-2019	3,272.50	33,711.75	3,272.50	33,711.75	
10-Aug-2019	3,342.75	37,054.50	3,342.75	37,054.50	
11-Aug-2019	2,517.50	39,572.00	2,517.50	39,572.00	
12-Aug-2019	1,078.50	40,650.50	1,078.50	40,650.50	
13-Aug-2019	3,261.00	43,911.50	3,261.00	43,911.50	
14-Aug-2019	4,038.75	47,950.25	4,038.75	47,950.25	
15-Aug-2019	3,884.00	51,834.25	3,884.00	51,834.25	
16-Aug-2019	4,226.25	56,060.50	4,226.25	56,060.50	
17-Aug-2019	2,879.25	58,939.75	2,879.25	58,939.75	
18-Aug-2019	1,370.75	60,310.50	1,370.75	60,310.50	
19-Aug-2019	2,788.25	63,098.75	2,788.25	63,098.75	
20-Aug-2019	89.50	63,188.25	89.50	63,188.25	
21-Aug-2019	2,743.00	65,931.25	2,743.00	65,931.25	
22-Aug-2019	3,197.75	69,129.00	3,197.75	69,129.00	
23-Aug-2019	5,362.50	74,491.50	5,362.50	74,491.50	
24-Aug-2019	4,981.50	79,473.00	4,981.50	79,473.00	
25-Aug-2019	4,821.50	84,294.50	4,821.50	84,294.50	
26-Aug-2019	3,793.75	88,088.25	3,793.75	88,088.25	
27-Aug-2019	48.50	88,136.75	48.50	88,136.75	
28-Aug-2019	4,373.00	92,509.75	4,373.00	92,509.75	
29-Aug-2019	4,822.75	97,332.50	4,822.75	97,332.50	
30-Aug-2019	4,589.25	101,921.75	4,589.25	101,921.75	
31-Aug-2019	4,875.00	106,796.75	4,875.00	106,796.75	

less Difference in Water Content:	5928.92
Less Out of Seam dilution:	1911.49
Water treatment plant coal	0
<b>Output (tons) measured by Belt</b>	<b>98,956.34</b>
Tonnes mined in DARR	0
Net Output after removing DARR	98,956.34

## Barapukuria Coal Mine Daywise Data Graph for August 2019



আসুন, যানবাহনসমূহকে অটোগ্যাসে রূপান্তর করি...

জাতীয় সম্পদ প্রাকৃতিক গ্যাস সাশ্রয় করি...

facebook

"Energy misused, cannot be excused"

আমাদের ঘরে যদি এখনো কয়েল স্টার্টার যুক্ত টিউবলাইট থেকে থাকে, আসুন আজই LED টিউবলাইট দ্বারা প্রতিস্থাপন করি।

HYDROCARBON UNIT ON FACEBOOK

“আসুন আমাদের জাতীয় সম্পদ প্রাকৃতিক গ্যাস সাশ্রয় করি”

১। **LPG** ব্যবহার করুন..

অবৈধ গ্যাস সংযোগ থেকে বিরত থাকুন

২। **CNG** নয়, অকটেন দিয়ে গাড়ি চালান...

গাড়ির ইঞ্জিনের আয়ুষ্কাল বাড়ান

চলুন আজই যানবাহনসমূহ AUTO GAS (LPG) এ রূপান্তর করি...

- \* CNG এর তুলনায় LPG কনভারশনে ৫০% কম খরচ হয়
- \* ৩-৫ মিনিটে ট্যাংকে ফুয়েল ভর্তি হয়, লম্বা লাইনে দাঁড়িয়ে অপেক্ষা করার প্রয়োজন পরে না
- \* CNG এর তুলনায় সিলিন্ডারে জায়গা, ওজন ও প্রেশার কম দরকার
- \* রক্ষণাবেক্ষণের খরচ কম
- \* পেট্রলের তুলনায় AUTO GAS -এ খরচ প্রায় ৫০% কম
- \* গ্যাসোলিন ও ডিজেলের তুলনায় নিঃসরণ কম

# Hydrocarbon Unit

Energy & Mineral Resources Division  
Ministry of Power, Energy & Mineral Resources  
153, Pioneer Road  
Segunbagicha, Dhaka-1000  
www.hcu.org.bd