

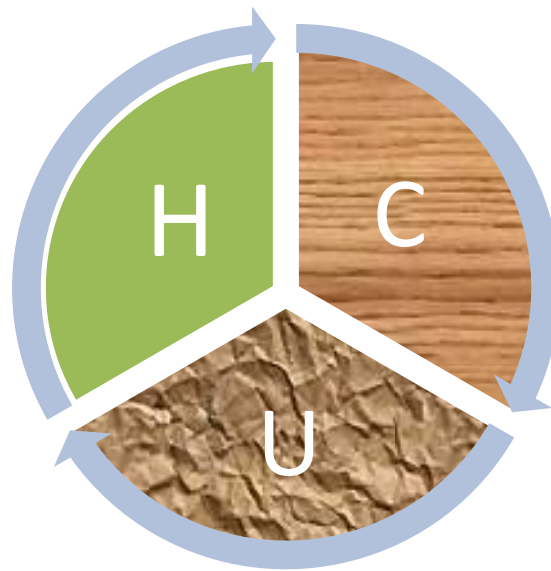


# HYDROCARBON UNIT

Energy and Mineral Resources Division

## Gas and Coal Reserve & Production

November 2019



## Gas Reserve & Production at a glance

Gas Initially in Place (GIIP)	:	35,796.19 Bcf
Recoverable (2P)	:	28,685.40 Bcf
Cumulative Production as of November 2019	:	17,296.40 Bcf
Remaining Reserve up to November 2019	:	11,389.00 Bcf
Gas Production in November 2019	:	74.38 Bcf
National Oil Company (NOC's) production in November 2019	:	28.48 Bcf
International Oil Company (IOC's) production in November 2019	:	45.90 Bcf
No. of National Oil Company (NOC's) in November 2019	:	3 (BGFCL, BAPEX, SGFL)
No. of International Oil Company (IOC's) in November 2019	:	2 (Chevron, Tullow)
Total gas fields of National Oil Company(NOC) in November 2019	:	21
Total gas fields of International Oil Company(IOC) in November 2019	:	5
Total gas wells of National Oil Company(NOC) in November 2019	:	115
Total gas wells of International Oil Company(IOC) in November 2019	:	60
No. of National Oil Company (NOC's) gas production well in November 2019	:	70
No. of International Oil Company (IOC's) gas production well in November 2019	:	42
No. of National Oil company(NOC's) suspended well in November 2019	:	45
No. of International Oil company(IOC's) suspended well in November 2019	:	18
Total LNG Import in November 2019	:	16.86 Bcf
Cumulative LNG Import till November 2019	:	200.24 Bcf

## Executive Summary of November 2019

Total gas and condensate Production in November 2019 were 74.38 Bcf and 317954.10 Bbl. In the previous month i.e. October 2019, gas and condensate production was 79.32 Bcf and 336476.75 Bbl and in the same month of the previous year i.e. November 2018, total gas and condensate production was 81.41 Bcf and 347836.78 Bbl respectively. The National Oil Companies (NOC's) and International Oil Companies (IOC's) Produced 28.48 Bcf and 45.90 Bcf gas respectively in November 2019. During the previous month i.e. October 2019, gas production by the National Oil Companies (NOC's) and International Oil Companies (IOC's) were 30.19 Bcf and 49.14 Bcf respectively. In the month of November 2019, Bibiyana gas field Produced 36.94Bcf gas and it ranked top among the gas producers. Average production from the field during the month of November 2019 was 1230 Mmcf. It is noted that Bibiyana gas field Produced 39.50 Bcf in October 2019.

During the month of November 2019 total production of condensate was 317954.10 Bbl compared to 336476.75 Bbl in the previous month i.e. October 2019. Bibiyana gas field Produced 245451.05 Bbl condensate and ranked top while Jalalabad ranked 2<sup>nd</sup> by producing 25679.72 Bbl.

In the month of November 2019 total coal production was 33,947.17 Ton. In the previous month i.e. October 2019 total coal production was 3,457.12 Ton. It indicates that 30,490.05 Ton more Coal was produced compared to previous month.

Total LNG import in November 2019 was 16.86 Bcf. As a result, cumulative LNG import stands on 200.24 Bcf till November 2019.

## **Table of Contents**

<b>Gas Report</b>	<b>Page No.</b>
Summary	1
summary of Reserve and Production	2
Production comparison between October 2019 & November 2019	3
Production per well & production reserve ratio	4
Monthly Production by Fields & Wells up to November 2019	5-12
Monthly Condensate Production by Fields up to November 2019	13-14
Monthly Water Production by Fields from November 2019	15-16
Conditions of Field and Well up to November 2019	17-21
<b>Chart</b>	
Well-wise Production of All fields in 2018-19	22
Reserve, Production and Remaining Reserve as of November 2019	23
Daily Average Gas Production from January 2012 to November 2019	24
Field wise Daily Average Production as of November 2019	25
Well wise Daily Average Production-BGFCL as of November 2019	26
Well wise Daily Average Production-BAPEX and SGFL, November 2019	27
Well wise Daily Average Production-IOC and JVA, November 2019	28
Comparison of Field wise Avg Gas Production between October 19 & November 19	29
Daily Average Production by Operator, November 2019	30
Comparison of Operator wise daily avg Production between October 19 & November 19	31
Daily Average Production – National vs IOC's, November 2019	32
Daily avg Gas Production- National vs IOC's between October 19 & November 19	33
Daily Average Production IOC's and JVA, November 2019	34
Monthly Condensate Production, November 2019	35
<b>Coal Report</b>	
Summary	36-37
Barapukuria Coal Mine-MPM and P Contract (BCMCL)	38
Barapukuria Coal Mine Day wise Data Graph for November 2019	39

## Summary of Reserve, Production & Import As of 30 November 2019

<b>Gas Initially Place (Proven + Probable)</b>	<b>35,796.19 Bcf</b>	<b>35.80 Tcf</b>
<b>Recoverable (Proven + Probable)</b>	<b>28,685.40 Bcf</b>	<b>28.69 Tcf</b>
<b>Gas Production in November 2019</b>	<b>74.38 Bcf</b>	<b>0.07 Tcf</b>
<b>Cumulative Gas Production as of November 2019</b>	<b>17,296.40 Bcf</b>	<b>17.30 Tcf</b>
<b>Remaining Reserve</b>	<b>11,389.00 Bcf</b>	<b>11.39 Tcf</b>

*NOTE: Reserve figure based on "Updated Report on Bangladesh Gas Reserve Estimation 2010", prepared by Gustavson Associates LLC, USA*

<b>Total LNG Import in November 2019</b>	<b>16.86 Bcf</b>	<b>0.02 Tcf</b>
<b>Cumulative LNG Import till November 2019</b>	<b>200.24 Bcf</b>	<b>0.20 Tcf</b>

# Summary of Reserve and Production

(As of November 2019)

Gas Bcf



SI No.	Field	2P	GIIP	2P Reserve	Gas Prod. In Nov '19	Cum. Gas Production	Remaining Reserve	Cum. Condensate Production
1	Begumganj		47.0	33.0	0.2	3.4	29.6	1
2	Shahbazpur		415.0	261.0	1.3	57.9	203.1	8
3	Semutang		654.0	318.0	0.0	13.3	304.7	5
4	Fenchuganj		483.0	329.0	0.1	160.2	168.8	116
5	Salda Nadi		393.0	275.0	0.2	92.8	182.2	59
6	Srikail*		230.0	161.0	1.0	92.5	68.5	160
7	Sundalpur *		62.2	50.2	0.2	14.3	35.9	1
8	Rupganj		48.0	33.6	0.0	0.7	32.9	1
<b>Bapex</b>			<b>2,332.2</b>	<b>1,460.8</b>	<b>2.9</b>	<b>435.1</b>	<b>1,025.7</b>	<b>350</b>
9	Meghna		122.0	101.0	0.2	72.2	28.8	114
10	Narshingdi		405.0	345.0	0.8	208.5	136.5	431
11	Kamta		72.0	50.0	0.0	21.1	28.9	4
12	Habiganj		3,981.0	2,787.0	5.7	2,494.8	292.2	137
13	Bakhrabad		1,825.0	1,387.0	1.2	824.3	562.7	1,027
14	Titas		9,039.0	7,582.0	13.8	4,810.6	2,771.4	5,353
<b>BGFCL</b>			<b>15,444.0</b>	<b>12,252.0</b>	<b>21.7</b>	<b>8,431.5</b>	<b>3,820.5</b>	<b>7,065</b>
15	Sangu		976.0	771.0	0.0	489.5	281.5	37
<b>Santos/Cairn</b>			<b>976.0</b>	<b>771.0</b>	<b>0.0</b>	<b>489.5</b>	<b>281.5</b>	<b>37</b>
16	Bibiyana		5,321.0	4,532.0	36.9	4,013.2	518.8	23,994
17	Moulavi Bazar		630.0	494.0	0.3	327.5	166.5	118
18	Jalalabad**		1,346.0	1,346.0	5.9	1,348.9	-2.9	10,425
<b>Chevron</b>			<b>7,297.0</b>	<b>6,372.0</b>	<b>43.2</b>	<b>5,689.6</b>	<b>682.4</b>	<b>34,536</b>
19	Feni		185.0	130.0	0.0	63.0	67.0	110
<b>Niko</b>			<b>185.0</b>	<b>129.6</b>		<b>63.0</b>	<b>66.6</b>	<b>110</b>
20	Kailas Tila		3,463.0	2,880.0	1.7	746.8	2,133.2	7,952
21	Sylhet		580.0	408.0	0.1	215.6	192.4	804
22	Rashidpur		3,887.0	3,134.0	1.5	644.1	2,489.9	791
23	Chattak		677.0	474.0	0.0	25.8	448.2	4
24	Beani Bazar		225.0	137.0	0.3	98.1	38.9	1,613
<b>SGFL</b>			<b>8,832.0</b>	<b>7,033.0</b>	<b>3.5</b>	<b>1,730.3</b>	<b>5,302.7</b>	<b>11,165</b>
25	Bangura		730.0	621.0	3.0	457.4	163.6	1,160
<b>Tullow</b>			<b>730.0</b>	<b>621.0</b>	<b>3.0</b>	<b>457.4</b>	<b>163.6</b>	<b>1,160</b>
26	Kutubdia		65.0	46.0	0.0	0.0	46.0	0
<b>Total</b>			<b>35,796.2</b>	<b>28,685.4</b>	<b>74.38</b>	<b>17,296.4</b>	<b>11,389.0</b>	<b>54,423</b>

\* Preliminary reserve estimated by BAPEX

\*\* 2P reserve estimation by Petrobangla has crossed the limit. So 2P reserve is estimated as GIIP reserve now.

## Production comparison between October'19 & November'19



SI No.	Field	Gas Prod. (MMcf) in Oct'19	Daily Avg. (MMcfd) in Oct'19	Gas Prod. (MMcf) in Nov'19	Daily Avg. (MMcfd) in Nov'19
1	Begumganj	173	6	165	5
2	Shahbazpur	1763	57	1284	43
3	Semutang	31	1	27	1
4	Fenchuganj	113	4	104	3
5	Salda Nadi	173	6	152	5
6	Srikail	1004	32	979	33
7	Sundalpur	219	7	212	7
8	Rupganj	0	0	0	0
<b>Bapex</b>		<b>3477</b>	<b>112</b>	<b>2923</b>	<b>97</b>
9	Meghna	262	8	250	8
10	Narshingdi	821	26	786	26
11	Kamta	0	0	0	0
12	Habiganj	5855	189	5671	189
13	Bakhrabad	1290	42	1234	41
14	Titas	14360	463	13759	459
<b>BGFCL</b>		<b>22588</b>	<b>729</b>	<b>21699</b>	<b>723</b>
15	Sangu	0	0	0	0
<b>Santos/Cairn</b>		<b>0</b>	<b>0</b>	<b>0</b>	<b>0</b>
16	Bibiyana	39496	1274	36942	1231
17	Moulavi Bazar	463	15	346	12
18	Jalalabad	6545	211	5949	198
<b>Chevron</b>		<b>46504</b>	<b>1500</b>	<b>43237</b>	<b>1441</b>
19	Feni	0	0	0	0
<b>Niko</b>		<b>0</b>	<b>0</b>	<b>0</b>	<b>0</b>
20	Kailas Tila	1782	57	1695	57
21	Sylhet	113	4	110	4
22	Rashidpur	1498	48	1452	48
23	Chattak	0	0	0	0
24	Beani Bazar	264	9	256	9
<b>SGFL</b>		<b>3658</b>	<b>118</b>	<b>3513</b>	<b>117</b>
25	Bangura	3095	100	3013	100
<b>Tullow</b>		<b>3095</b>	<b>100</b>	<b>3013</b>	<b>100</b>
26	Kutubdia	0	0	0	0
<b>Total</b>		<b>79322</b>	<b>2559</b>	<b>74385</b>	<b>2479</b>

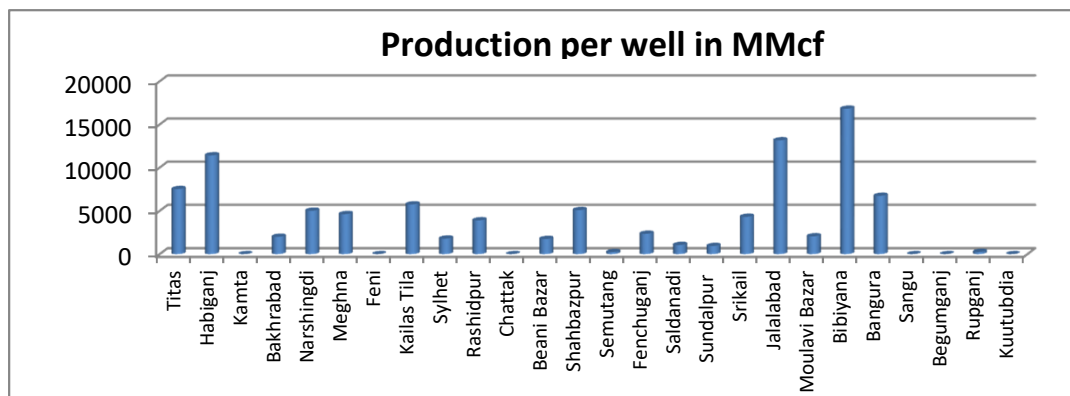
## Production per well & production reserve ratio



**HYDROCARBON UNIT**

Energy & Mineral Resources Division

	No of production well	Total 2p- Recoverable	2018-19 production	production per well mmcf	production reserve ratio
Titas	26	7582	183.36	7052.31	0.024
Habiganj	8	2787	79.21	9901.25	0.028
Kamta	0	50	0	0.00	0.000
Bakhrabad	7	1387	11	1571.43	0.008
Narshingdi	2	345	9.95	4975.00	0.029
Meghna	1	101	4.12	4120.00	0.041
Feni	0	130	0	0.00	0.000
Kailas Tila	4	2880	22.87	5717.50	0.008
Sylhet	1	408	1.5	1500.00	0.004
Rashidpur	5	3134	18.6	3720.00	0.006
Chattak	0	474	0	0.00	0.000
Beani Bazar	1	137	3.21	3210.00	0.023
Shahbazpur	4	261	20.35	5087.50	0.078
Semutang	2	318	0.28	140.00	0.001
Fenchuganj	2	329	3.41	1705.00	0.010
Saldanadi	2	275	1.56	780.00	0.006
Sundalpur	1	50.2	2.52	2520.00	0.050
Srikail	3	161	12.45	4150.00	0.077
Jalalabad	7	1346	84.14	12020.00	0.063
Moulavi Bazar	4	494	7.87	1967.50	0.016
Bibiyana	26	4532	463.74	17836.15	0.102
Bangura	5	621	32.89	6578.00	0.053
Sangu	0	771	0	0.00	0.000
Begumganj	1	33	1.71	0.00	0.052
Rupganj	0	33.6	0	0.00	0.000
Kuutubdia	0	46	0	0.00	0.000
<b>Total</b>	<b>112</b>	<b>28685.8</b>	<b>964.74</b>	<b>8613.75</b>	<b>0.034</b>





## Monthly Production by Field and Well upto November- 2019



**HYDROCARBON UNIT**  
Energy & Mineral Resources Division

Figures in mmscf

Well	Jan	Feb	Mar	Apr	May	Jun	Jul	Aug	Sep	Oct	Nov	Dec	Total	Cumulative	2018	2017	2016
<b>Field : Bakharabad</b>																	
BKB-1	0	0	0	0	243	448	461	434	421	434	419		2,860	144,027	0	0	0
BKB-2	34	32	37	36	38	34	29	30	28	28	27		352	86,923	445	543	731
BKB-3	154	151	154	152	149	142	151	148	136	141	137		1,616	162,461	1,989	2,249	2,223
BKB-4	0	0	0	0	0	0	0	0	0	0	0		0	55,872			
BKB-5	155	140	154	146	141	140	145	151	144	149	143		1,609	60,420	1,822	1,847	1,814
BKB-6	0	0	0	0	0	0	0	0	0	0	0		0	50,069	0		
BKB-7	0	0	0		0	0	0	0	0	0	0		0	107,750	0	0	0
BKB-8	158	170	214	230	214	206	237	231	223	230	222		2,334	128,594	2,017	3,462	4,142
BKB-9	251	229	248	242	215	170	189	207	204	216	198		2,370	23,492	3,332	3,637	4,160
BKB-10	98	84	91	89	94	90	93	93	90	93	89		1,003	4,677	1,297	1,453	924
<b>Field Total:</b>	<b>852</b>	<b>807</b>	<b>898</b>	<b>894</b>	<b>1,094</b>	<b>1,229</b>	<b>1304</b>	<b>1,293</b>	<b>1,247</b>	<b>1,290</b>	<b>1,234</b>	<b>0</b>	<b>12,143</b>	<b>824,284</b>	<b>10,903</b>	<b>13,190</b>	<b>13,070</b>
<b>Daily Avg.(mmscfd)</b>	27	29	29	30	35	41	42	42	42	42	41	0	36		30	36	36
<b>Field : Bangura</b>																	
Bangura-1	384	343	377	363	368	354	347	300	321	329	323		3,809	93,064	4,615	4,914	4,886
Bangura-2	504	437	472	469	458	442	451	389	415	428	418		4,883	84,421	6,802	7,837	9,200
Bangura-3	601	516	563	544	544	470	542	424	498	499	484		5,685	102,412	7,265	8,662	10,038
Bangura-6	343	306	319	320	312	268	311	243	286	270	250		3,229	12,175	4,847	4,100	
Bangura-5	1,212	1,087	1,200	1,153	1,182	1,197	1,540	1,370	1,541	1,569	1,538		14,588	165,331	8,410	9,699	11,514
<b>Field Total:</b>	<b>3,044</b>	<b>2,690</b>	<b>2,931</b>	<b>2,848</b>	<b>2,864</b>	<b>2,732</b>	<b>3191</b>	<b>2,726</b>	<b>3,061</b>	<b>3,095</b>	<b>3,013</b>	<b>0</b>	<b>32,195</b>	<b>457,403</b>	<b>31,940</b>	<b>35,212</b>	<b>35,639</b>
<b>Daily Avg.(mmscfd)</b>	98	96	95	95	92	91	103	88	102	100	100	0	96		88	96	98
<b>Field : Beani Bazar</b>																	
BB-1	0	0	0	0	0	0	0	0	0	0	0	0	0	35,481	0	1,023	33
BB-2	274	239	266	256	269	259	266	264	256	264	256		2,870	62,606	3,276	3,282	3,431
<b>Field Total:</b>	<b>274</b>	<b>239</b>	<b>266</b>	<b>256</b>	<b>269</b>	<b>259</b>	<b>266</b>	<b>264</b>	<b>256</b>	<b>264</b>	<b>256</b>	<b>0</b>	<b>2,870</b>	<b>98,087</b>	<b>3,276</b>	<b>4,306</b>	<b>3,464</b>
<b>Daily Avg.(mmscfd)</b>	9	9	9	9	9	9	9	9	9	9	9	0	9		9	12	9
<b>Field : Bibiyana</b>																	
BY-1	2,554	2,149	2,272	2493	2,668	1,827	2452	2,164	2,653	2,540	2468		26,240	394,125	21,743	35,595	35,050
BY-2	1,632	1,327	1,573	1544	1,560	1,363	1451	1,251	1,402	1,404	1301		15,809	290,236	21,388	23,957	20
BY-3	737	608	567	549	526	519	218	4	4	21	443		4,196	239,465	6,249	9,904	16,873
BY-4	1,865	1,587	1,790	1921	2,125	1,896	2227	1,965	2,257	2,317	2160		22,110	202,647	28,559	6,571	7,322
BY-5	762	698	718	297	668	527	514	434	616	603	329		6,168	178,135	6,131	8,117	9,229
BY-6	792	617	771	809	937	623	736	733	809	862	659		8,346	229,842	11,057	11,879	15,208
BY-7	2,548	2,171	2,391	2190	2,322	1,904	2325	1,988	2,182	2,166	1895		24,082	268,665	23,155	32,874	33,040
BY-8	768	713	753	777	761	802	815	840	776	827	678		8,511	142,754	8,921	12,486	2,987
BY-9	553	482	359	476	484	488	454	484	472	499	380		5,131	129,748	4,093	6,247	6,820

## Monthly Production by Field and Well upto November- 2019



**HYDROCARBON UNIT**  
Energy & Mineral Resources Division

Figures in mmscf

Well	Jan	Feb	Mar	Apr	May	Jun	Jul	Aug	Sep	Oct	Nov	Dec	Total	Cumulative	2018	2017	2016
BY-10	2,106	1,752	2,357	2244	2,233	1,901	2227	2,100	2,104	2,154	1751		22,929	357,926	30,954	32,967	33,582
BY-11	797	626	657	818	861	727	836	678	868	912	738		8,516	128,477	12,147	6,813	9,357
BY-12	2,162	2,177	2,205	2245	2,280	2,173	2333	2,358	2,223	2,241	1854		24,251	146,954	6,835	8,284	10,574
BY-13	959	569	880	798	950	905	963	883	902	933	924		9,665	82,625	13,171	11,842	15,603
BY-14	800	730	845	666	777	660	721	670	747	748	688		8,051	98,665	11,523	15,354	15,170
BY-15	1,829	1,420	1,646	1693	2,124	1,806	2051	1,817	1,767	1,847	1800		19,800	116,721	24,295	19,111	17,698
BY-16	908	823	806	741	807	792	877	896	831	862	858		9,203	70,275	9,264	12,541	15,844
BY-17	1,794	1,176	1,440	1496	1,576	1,726	1770	1,265	1,477	1,591	1491		16,801	94,673	17,603	15,412	15,463
BY-18	2,784	2,387	2,668	2541	2,546	2,204	2489	2,494	2,351	2,387	2337		27,190	144,992	31,890	29,509	33,072
BY-19	1,761	2,275	2,368	2362	2,407	2,003	2354	2,359	2,173	2,261	2225		24,547	56,625	8,144	9,859	9,383
BY-20	1,636	2,008	2,113	2176	1,384	1,106	1748	1,818	2,000	2,126	2089		20,206	58,051	7,840	6,533	9,282
BY-21	634	531	656	671	719	649	723	577	716	756	758		7,389	42,613	9,670	13,246	8,533
BY-22	1,742	1,310	1,480	1517	1,833	1,403	1736	1,629	1,664	1,675	1616		17,605	125,405	24,755	27,093	33,387
BY-23	2,261	1,781	2,212	2100	2,190	1,731	2144	2,025	2,210	2,099	1995		22,748	74,795	32,043	15,333	4,405
BY-24	870	712	824	826	830	850	833	787	885	904	886		9,209	67,372	13,268	13,484	15,265
BY-25	2,070	2,145	2,340	2229	2,396	1,836	2308	2,152	2,251	2,267	2188		24,182	129,362	28,306	30,331	33,282
BY-26	2,683	2,344	2,465	2318	2,524	1,885	2467	2,370	2,471	2,491	2432		26,449	142,014	33,853	30,446	33,167
<b>Field Total:</b>	<b>40006</b>	<b>35117</b>	<b>39154</b>	<b>38499</b>	<b>40489</b>	<b>34306</b>	<b>39773</b>	<b>36741</b>	<b>38810</b>	<b>39496</b>	<b>36942</b>	<b>0</b>	<b>419,334</b>	<b>4,013,163</b>	<b>446,855</b>	<b>445,787</b>	<b>439,615</b>
<b>Daily Avg.(mmscfd)</b>	1291	1254	1263	1283	1306	1144	1283	1,185	1,294	1,274	1,231	0	1,255		1,224	1,221	1,204
<b>Field :</b>	<b>Chattak</b>																
Ch-1	Production Suspended															25,834	
<b>Field Total:</b>	<b>0</b>			<b>0</b>	<b>0</b>	<b>0</b>	<b>0</b>	<b>0</b>	<b>0</b>	<b>0</b>	<b>0</b>	<b>0</b>	<b>25,834</b>				
<b>Daily Avg.(mmscfd)</b>	0			0	0	0	0	0	0	0	0	0	0	0	0	0	0
<b>Field :</b>	<b>Fenchuganj</b>																
Fenchuganj-2	0	0	0	0	0	0	0	0	0	0	0	0	0	38,169	0	0	0
Fenchuganj-3	274	203	225	217	145	129	174	121	103	102	93		1,786	92,424	3,186	6,192	7,606
Fenchuganj-4	60	30	30	28	27	25	27	21	22	11	11		292	29,566	809	441	3,189
<b>Field Total:</b>	<b>334</b>	<b>234</b>	<b>255</b>	<b>245</b>	<b>172</b>	<b>154</b>	<b>201</b>	<b>142</b>	<b>124</b>	<b>113</b>	<b>104</b>	<b>0</b>	<b>2,078</b>	<b>160,158</b>	<b>3,994</b>	<b>6,633</b>	<b>10,795</b>
<b>Daily Avg.(mmscfd)</b>	11	8	8	8	6	5	6	5	4	4	3	0	6		11	18	30
<b>Field :</b>	<b>Feni</b>																
Feni-1	Production Suspended								0	0	0		34,214				
Feni-2	Production Suspended								0	0	0		6,119				
Feni-3	Production Suspended								0	0	0		2,176				

## Monthly Production by Field and Well upto November- 2019



**HYDROCARBON UNIT**  
Energy & Mineral Resources Division

Figures in mmscf

Well	Jan	Feb	Mar	Apr	May	Jun	Jul	Aug	Sep	Oct	Nov	Dec	Total	Cumulative	2018	2017	2016	
Feni-4	Production Suspended											0	0	14,386				
Feni-5	Production Suspended											0	0	6,127				
<b>Field Total:</b>													<b>63,023</b>					
<b>Daily Avg.(mmscfd)</b>																		
<b>Field :</b>	<b>Habiganj</b>																	
Hbj-1	429	375	414	379	369	331	338	311	289	300	291		3,825	281,933	2,207	0	0	
Hbj-2	0	0	0	0	0	0	0	0	0	0	0		0	275,704	0	0	0	
Hbj-3	1,105	952	986	925	954	861	890	850	840	870	845		10,079	387,237	13,155	13,151	13,227	
Hbj-4	1,105	952	986	925	954	861	890	850	840	870	845		10,079	381,695	13,155	13,151	13,227	
Hbj-5	798	711	776	746	770	725	767	732	724	750	729		8,229	305,903	9,497	9,497	9,552	
Hbj-6	461	413	459	447	461	435	460	440	435	451	437		4,900	167,109	5,487	5,491	5,523	
Hbj-7	1,211	1,090	1,233	1191	1,228	1,160	1197	1,176	1,178	1,216	1,174		13,054	266,173	14,533	14,565	14,685	
Hbj-8	0	0	0	0	0	0	0	0	0	0	0		0	11,023	0	0	0	
Hbj-9	0	0	0	0	0	0	0	0	0	0	0		0	52,652	0	0	0	
Hbj-10	969	870	925.3	893	921	833	838	823	825	851	822		9,571	262,703	13,928	14,058	14,629	
Hbj-11	697	623	619.3	598	617	544	539	529	530	547	528		6,372	102,680	9,579	10,398	11,247	
<b>Field Total:</b>	<b>6,776</b>	<b>5,985</b>	<b>6,400</b>	<b>6,104</b>	<b>6,276</b>	<b>5,750</b>	<b>5920</b>	<b>5,712</b>	<b>5,662</b>	<b>5,855</b>	<b>5,671</b>	<b>0</b>	<b>66,110</b>	<b>2,494,811</b>	<b>81,540</b>	<b>80,313</b>	<b>82,091</b>	
<b>Daily Avg.(mmscfd)</b>	219	214	206	203	202	192	191	184	189	189	189	0	198		223	220	225	
<b>Field :</b>	<b>Jalalabad</b>																	
JB-1	877	733	790	761	813	703	786	670	788	768	694		8,382	254,151	10,469	9,142	11,951	
JB-2	1,088	910	978	934	1,001	876	975	832	978	953	870		10,396	289,992	12,973	14,517	17,057	
JB-3	1,451	1,214	1,313	1277	1,344	1,177	1300	1,120	1,304	1,271	1,154		13,924	354,449	17,399	19,162	21,086	
JB-4	453	379	410	399	419	368	406	345	408	397	362		4,348	283,348	5,821	7,045	8,313	
JB-6	1,451	1,114	1,313	1277	1,332	1,163	1297	1,010	1,304	1,262	1,160		13,682	73,007	17,364	19,524	19,136	
JB-7	1,088	910	985	955	1,014	882	973	793	978	953	861		10,392	39,782	13,053	10,324	5,254	
JB-8	1,073	898	971	943	1,000	860	959	782	965	940	849		10,238	54,168	12,793	14,513	16,252	
<b>Field Total:</b>	<b>7,482</b>	<b>6,158</b>	<b>6,760</b>	<b>6,546</b>	<b>6,922</b>	<b>6,029</b>	<b>6695</b>	<b>5,552</b>	<b>6,724</b>	<b>6,545</b>	<b>5,949</b>	<b>0</b>	<b>71,362</b>	<b>1,348,897</b>	<b>89,872</b>	<b>94,226</b>	<b>99,048</b>	
<b>Daily Avg.(mmscfd)</b>	241	220	218	218	223	201	216	179	224	211	198	0	214		246	258	271	
<b>Field :</b>	<b>Kailas Tila</b>																	
KTL-1	147	109	114	0	0	0	0	0	0	0	0		371	205,181	462	0	0	

## Monthly Production by Field and Well upto November- 2019



**HYDROCARBON UNIT**  
Energy & Mineral Resources Division

Figures in mmscf

Well	Jan	Feb	Mar	Apr	May	Jun	Jul	Aug	Sep	Oct	Nov	Dec	Total	Cumulative	2018	2017	2016
KTL-2	612	551	610	585	607	590	611	610	592	615	584		6,566	184,712	7,190	7,242	7,282
KTL-3	235	209	228	221	226	219	226	226	218	206	183		2,397	140,217	2,947	3,255	5,003
KTL-4	253	228	254	242	238	229	229	217	186	190	184		2,451	98,546	3,336	3,680	3,499
KTL-5	0	0	0	0	0	0	0	0	0	0	0		0	17,923	0	0	0
KTL-6	770	689	765	731	774	744	774	768	746	771	745		8,277	99,366	8,950	9,086	8,975
KTL-7	0	0	0	0	0	0	0	0	0	0	0		0	816	0	0	329
Field Total:	2,017	1,787	1,971	1,779	1,846	1,783	1,841	1,820	1,741	1,782	1,695	0	20,062	746,761	22,886	23,263	25,088
Daily Avg.(mmscfd)	65	64	64	59	60	59	59	59	58	57	57	0	60		63	64	69
<b>Field : Kamta</b>																	
Kamta-1	Production Suspended												21,139				
Field Total:	0												21,139				
Daily Avg.(mmscfd)																	
<b>Field : Meghna</b>																	
M-1	372	308	314	302	293	272	257	315	255	262	250		3,201	72,174	4,538	4,625	4,425
Field Total:	372	308	314	302	293	272	257	315	255	262	250	0	3,201	72,174	4,538	4,625	4,425
Daily Avg.(mmscfd)	12	11	10	10	9	9	8	10	9	8	8	0	10		12	13	12
<b>Field : Moulavi Bazar</b>																	
MV Bazar-2	121	79	72	62	58	29	23	67	81	52	42		687	54,725	2,302	2,866	3,201
MV Bazar-3	207	149	124	113	173	92	75	204	245	199	149		1,730	159,539	3,712	4,705	5,394
MV Bazar-4	159	102	67	60	54	26	83	109	117	100	76		953	59,020	3,103	3,945	4,141
MV Bazar-5	0	0	0	0	0	0	0	0	0	0	0			66			
MV Bazar-6	193	182	132	183	237	154	301	107	180	112	79		1,861	18,210	1,734	1,676	1,737
MV Bazar-7	1	1	0	0	0	0	0	0	1	0	0		4	5,648	21	152	123
MV Bazar-9	0	0	0	0	0	0	0	0	0	0	0		1	30,336	1	0	41
Field Total:	682	511	396	418	523	301	483	487	624	463	346	0	5,236	327,544	10,872	13,345	14,638
Daily Avg.(mmscfd)	22	18	13	14	17	10	16	16	21	15	12	0	16		30	37	40
<b>Field : Narshingdi</b>																	
N-1	530	479	530	535	566	478	58	504	502	506	472		5,159	149,754	6,181	6,279	6,242
N-2	314	278	313	317	319	303	318	319	305	315	313		3,414	58,784	3,705	3,962	4,122
Field Total:	844	757	843	852	885	780	376	823	806	821	786	0	8,573	208,538	9,886	10,241	10,364

## Monthly Production by Field and Well upto November- 2019



**HYDROCARBON UNIT**  
Energy & Mineral Resources Division

Figures in mmscf

Well	Jan	Feb	Mar	Apr	May	Jun	Jul	Aug	Sep	Oct	Nov	Dec	Total	Cumulative	2018	2017	2016
<b>Daily Avg.(mmscfd)</b>	27	27	27	28	29	26	12	27	27	26	26	0	26		27	28	28
<b>Field : Rashidpur</b>																	
RP-1	542	491	530	513	537	513	536	539	513	538	523		5,775	172,838	6,505	6,625	6,639
RP-2	0	0	0	0	0	0	0	0	0	0	0		0	82,474			
RP-3	300	271	300	286	294	283	292	292	277	286	277		3,158	134,366	3,541	3,730	3,877
RP-4	267	239	262	243	237	223	231	234	231	241	236		2,645	130,541	3,227	3,516	3,675
RP-5	0	0	0	0	0	0	0	0	0	0	0		0	25,647			
RP-6	0	0	0	0	0	0	0	0	0	0	0		0	9,983	0	0	0
RP-7	173	155	163	149	143	138	142	144	144	148	143		1,641	65,967	2,096	2,225	2,355
RP-8	314	284	314	300	306	296	300	290	273	285	273		3,236	22,268	3,696	3,977	4,422
<b>Field Total:</b>	<b>1,597</b>	<b>1,439</b>	<b>1,569</b>	<b>1,491</b>	<b>1,517</b>	<b>1,454</b>	<b>1501</b>	<b>1,499</b>	<b>1,438</b>	<b>1,498</b>	<b>1,452</b>	<b>0</b>	<b>16,456</b>	<b>644,084</b>	<b>19,065</b>	<b>20,074</b>	<b>20,969</b>
<b>Daily Avg.(mmscfd)</b>	52	51	51	50	49	48	48	48	48	48	48	0	49		52	55	57
<b>Field : Salda Nadi</b>																	
Salda-1	0	0	0	0	0	0	0	0	0	0	0		0	36,904	0	0	0
Salda-2	0	0	0	0	0	0	0	0	0	0	0		0	28,495	0	0	0
Salda-3	123	119	135	130	125	120	192	207	186	173	152		1,663	27,243	1,067	1,514	2,350
Salda-4	4	5	5	6	4	4	2	0	0	0	0		29	146	70	14	34
<b>Field Total:</b>	<b>127</b>	<b>124</b>	<b>140</b>	<b>136</b>	<b>128</b>	<b>123</b>	<b>194</b>	<b>207</b>	<b>186</b>	<b>173</b>	<b>152</b>	<b>0</b>	<b>1,692</b>	<b>92,788</b>	<b>1,137</b>	<b>1,527</b>	<b>2,383</b>
<b>Daily Avg.(mmscfd)</b>	4	4	5	5	4	4	6	7	6	6	5	0	5		3	4	7
<b>Field : Sangu</b>																	
Sangu-1	0	0	0	0	0	0	0	0	0	0	0	0	0	116,191	0	0	0
Sangu-3z	0	0	0	0	0	0	0	0	0	0	0	0	0	131,796	0	0	0
Sangu-4	Production Suspended						0	0	0	0	0	0	0	87,280			
Sangu-5	Production Suspended						0	0	0	0	0	0	0	61,674			
Sangu-7	Production Suspended						0	0	0	0	0	0	0	18,202			
Sangu-8	Production Suspended						0	0	0	0	0	0	0	37,619			
Sangu-9	0	0	0	0	0	0	0	0	0	0	0	0	0	30,638	0	0	0
Sangu-10	Production Suspended						0	0	0	0	0	0	0				
Sangu-11	0	0	0	0	0	0		0	0	0	0	0	0	6,067	0	0	0
<b>Field Total:</b>	<b>0</b>	<b>0</b>	<b>0</b>	<b>0</b>	<b>0</b>	<b>0</b>	<b>0</b>	<b>0</b>	<b>0</b>	<b>0</b>	<b>0</b>	<b>0</b>	<b>0</b>	<b>489,467</b>	<b>0</b>	<b>0</b>	<b>0</b>

## Monthly Production by Field and Well upto November- 2019



**HYDROCARBON UNIT**

Energy & Mineral Resources Division

Figures in mmscf

Well	Jan	Feb	Mar	Apr	May	Jun	Jul	Aug	Sep	Oct	Nov	Dec	Total	Cumulative	2018	2017	2016
<b>Daily Avg.(mmscfd)</b>	0	0	0	0	0	0	0	0	0	0	0	0	0		0	0	0
<b>Field : Semutang</b>																	
Semutang-5	14	12	12	10	9	8	9	11	15	16	12		128	12,193	291	471	946
Semutang-6	7	11	14	14	14	14	14	12	14	15	16		145	1,100	84	66	0
<b>Field Total:</b>	<b>22</b>	<b>23</b>	<b>27</b>	<b>24</b>	<b>23</b>	<b>22</b>	<b>23</b>	<b>23</b>	<b>29</b>	<b>31</b>	<b>27</b>	<b>0</b>	<b>273</b>	<b>13,294</b>	<b>375</b>	<b>537</b>	<b>946</b>
<b>Daily Avg.(mmscfd)</b>	1	1	1	1	1	1	1	1	1	1	1	0	1		1	1	3
<b>Field : Shahbazpur</b>																	
Shahbazpur-1	0	0	0	0	35	265	66	146	0	18	243		773	22,131	134	4,835	3,623
Shahbazpur-2	534	523	637	656	678	531	596	685	614	588	155		6,196	17,278	6,650	4,243	189
Shahbazpur-3	377	436	505	510	536	585	619	629	597	622	620		6,037		5,222	1,162	3,116
Shahbazpur-4	513	452	567	632	608	481	407	414	569	535	267		5,443	18,446	6,936	1,801	1,091
<b>Field Total:</b>	<b>1,424</b>	<b>1,411</b>	<b>1,709</b>	<b>1,797</b>	<b>1,857</b>	<b>1,862</b>	<b>1,687</b>	<b>1,874</b>	<b>1,780</b>	<b>1,763</b>	<b>1,284</b>	<b>0</b>	<b>18,448</b>	<b>57,855</b>	<b>18,943</b>	<b>12,041</b>	<b>8,019</b>
<b>Daily Avg.(mmscfd)</b>	46	50	55	60	60	62	54	60	59	57	43	0	55		52	33	22
<b>Field : Srikail</b>																	
Srikail-2	442	417	461	443	452	432	446	451	428	444	432		4,849	42,793	5,154	5,384	6,064
Srikail-3	358	333	363	337	337	322	333	329	315	324	317		3,666	38,497	4,273	4,944	6,607
Srikail-4	276	256	277	272	261	248	254	242	238	236	230		2,789	11,234	2,971	3,439	2,035
<b>Field Total:</b>	<b>1,076</b>	<b>1,005</b>	<b>1,102</b>	<b>1,052</b>	<b>1,050</b>	<b>1,001</b>	<b>1,032</b>	<b>1,022</b>	<b>981</b>	<b>1,004</b>	<b>979</b>	<b>0</b>	<b>11,304</b>	<b>92,524</b>	<b>12,398</b>	<b>13,767</b>	<b>14,707</b>
<b>Daily Avg.(mmscfd)</b>	35	36	36	35	34	33	33	33	33	32	33	0	34		34	38	40
<b>Field : Sundalpur</b>																	
Sundalpur -1	0	0	0		0	0	0	0	0	0	0		0	9,809	0	0	552
Sundalpur -2	220	200	220	212	218	207	218	216	210	219	212		2,352	4,528	2,176	0	0
<b>Field Total:</b>	<b>220</b>	<b>200</b>	<b>220</b>	<b>212</b>	<b>218</b>	<b>207</b>	<b>218</b>	<b>216</b>	<b>210</b>	<b>219</b>	<b>212</b>	<b>0</b>	<b>2,352</b>	<b>14,337</b>	<b>2,176</b>	<b>0</b>	<b>552</b>
<b>Daily Avg.(mmscfd)</b>	7	7	7	7	7	7	7	7	7	7	7	0	7		6	0	2
<b>Field : Sylhet</b>																	
Sylhet-3	Production Suspended													89,032			
Sylhet-6	Production Suspended													91,748			
Sylhet-7	131	108	118	113	117	111	115	115	109	113	110		1,260	28,251	1,622	2,061	2,212
Surma-1	0	0	0	0	0	0	0	0	0	0	0		0	6,528	0	249	720

## Monthly Production by Field and Well upto November- 2019



**HYDROCARBON UNIT**  
Energy & Mineral Resources Division

Figures in mmscf

Well	Jan	Feb	Mar	Apr	May	Jun	Jul	Aug	Sep	Oct	Nov	Dec	Total	Cumulative	2018	2017	2016
<b>Field Total:</b>	<b>131</b>	<b>108</b>	<b>118</b>	<b>113</b>	<b>117</b>	<b>111</b>	<b>115</b>	<b>115</b>	<b>109</b>	<b>113</b>	<b>110</b>	<b>0</b>	<b>1,260</b>	<b>215,558</b>	<b>1,622</b>	<b>2,309</b>	<b>2,932</b>
<b>Daily Avg.(mmscfd)</b>	<b>4</b>	<b>4</b>	<b>4</b>	<b>4</b>	<b>4</b>	<b>4</b>	<b>4</b>	<b>4</b>	<b>4</b>	<b>4</b>	<b>4</b>	<b>0</b>	<b>4</b>		<b>4</b>	<b>6</b>	<b>8</b>
<b>Field :</b>	<b>Titas</b>																
Titas-1	675	537	559	566	571	521	556	533	538	537	520		6,113	445,742	8,516	7,897	9,999
Titas-2	962	865	939	906	968	903	918	842	895	902	879		9,978	445,483	11,522	11,506	11,474
Titas-3	0	0	0	0	0	0	0	0	0	0	0		0	314,888	0		
Titas-4	994	861	960	923	972	900	937	844	911	938	873		10,113	380,564	11,726	11,798	12,782
Titas-5	1,020	899	997	968	1,015	975	1030	907	962	988	966		10,727	438,979	11,838	11,869	10,692
Titas-6	978	878	958	964	142	739	834	765	825	847	815		8,744	371,872	12,030	12,029	12,809
Titas-7	947	824	977	891	948	740	862	708	832	858	813		9,399	354,264	11,919	11,707	12,125
Titas-8	510	426	498	497	567	433	493	461	507	485	463		5,340	277,976	6,154	6,889	7,046
Titas-9	539	475	517	518	583	548	570	572	574	582	549		6,028	282,517	6,706	8,246	8,467
Titas-10	647	565	636	619	702	671	716	616	676	677	657		7,181	206,182	7,612	7,431	4,350
Titas-11	855	762	867	830	858	282	514	524	841	859	814		8,006	254,907	9,998	10,276	9,075
Titas-12	482	422	483	463	476	305	415	340	463	471	455		4,774	105,549	5,160	5,168	5,326
Titas-13	580	513	576	552	567	501	525	555	80	0	0		4,449	194,541	6,952	7,879	9,553
Titas-14	576	498	566	536	552	412	433	429	514	525	508		5,546	155,532	7,203	8,309	8,888
Titas-15	460	412	434	405	420	402	416	417	405	410	397		4,578	144,091	5,543	7,973	11,777
Titas-16	669	592	646	612	635	569	601	586	564	583	565		6,623	152,968	8,605	10,060	11,333
Titas-17	515	431	507	475	514	443	508	465	488	489	464		5,300	44,803	6,335	7,011	7,359
Titas-18	546	458	535	504	540	464	537	489	518	520	484		5,594	43,600	6,664	7,168	7,338
Titas-19	507	450	489	458	471	441	471	470	458	462	449		5,127	33,176	6,115	6,106	6,253
Titas-20	305	277	310	294	306	292	292	298	298	309	298		3,280	22,108	3,914	3,635	3,645
Titas-21	253	232	258	249	263	250	256	260	255	259	250		2,784	12,016	2,995	2,800	1,572
Titas-22	309	284	296	231	269	265	275	264	249	247	224		2,912	27,330	4,158	4,336	5,497
Titas-27	487	404	478	455	479	418	496	485	458	490	463		5,113	33,952	5,827	6,136	6,233
Titas-23	483	436	489	477	496	459	474	192	184	475	447		4,612	14,617	5,594	4,410	
Titas-24	202	185	207	196	195	188	204	449	452	186	168		2,631	7,623	2,709	2,283	
Titas-25	528	476	528	508	519	472	500	740	756	473	459		5,961	18,176	6,324	5,622	269
Titas-26	809	733	801	731	783	702	769	453	481	789	777		7,828	27,093	9,672	9,210	383
<b>Field Total:</b>	<b>15,838</b>	<b>13,893</b>	<b>15,509</b>	<b>14,828</b>	<b>14,810</b>	<b>13,294</b>	<b>14,604</b>	<b>13,664</b>	<b>14,184</b>	<b>14,360</b>	<b>13,759</b>	<b>0</b>	<b>158,743</b>	<b>4,810,550</b>	<b>191,792</b>	<b>197,756</b>	<b>184,246</b>
<b>Daily Avg.(mmscfd)</b>	<b>511</b>	<b>496</b>	<b>500</b>	<b>494</b>	<b>478</b>	<b>443</b>	<b>471</b>	<b>441</b>	<b>473</b>	<b>463</b>	<b>459</b>	<b>0</b>	<b>475</b>		<b>525</b>	<b>542</b>	<b>505</b>

## Monthly Production by Field and Well upto November- 2019



**HYDROCARBON UNIT**  
Energy & Mineral Resources Division

Figures in mmscf

Well	Jan	Feb	Mar	Apr	May	Jun	Jul	Aug	Sep	Oct	Nov	Dec	Total	Cumulative	2018	2017	2016
<b>Field : Begumganj</b>																	
Begumganj-3	176	179	200	197	194	170	177	176	170	173	165		1,976	3,446	593	0	85
<b>Field Total:</b>	<b>176</b>	<b>179</b>	<b>200</b>	<b>197</b>	<b>194</b>	<b>170</b>	<b>177</b>	<b>176</b>	<b>170</b>	<b>173</b>	<b>165</b>	<b>0</b>	<b>1,976</b>	<b>3,446</b>	<b>593</b>	<b>0</b>	<b>85</b>
Daily Avg.(mmscfd)	6	6	6	7	6	6	6	6	6	6	5	0	6		2	0	0
<b>Field : Rupganj</b>																	
Rupganj-1	0	0	0										0	679	0	679	
<b>Field Total:</b>	<b>0</b>	<b>0</b>	<b>0</b>	<b>0</b>	<b>0</b>	<b>0</b>	<b>0</b>	<b>0</b>	<b>0</b>	<b>0</b>	<b>0</b>	<b>0</b>	<b>0</b>	<b>679</b>	<b>0</b>	<b>679</b>	
Daily Avg.(mmscfd)	0	0	0	0	0	0	0	0	0	0	0	0	0		0	2	
<b>Grand Total (in Bcf)</b>	<b>83.29</b>	<b>72.98</b>	<b>80.78</b>	<b>78.59</b>	<b>81.55</b>	<b>71.84</b>	<b>80</b>	<b>74.67</b>	<b>78.40</b>	<b>79.32</b>	<b>74.38</b>	<b>0.00</b>	<b>855.7</b>	<b>17,296.40</b>	<b>964.7</b>	<b>979.8</b>	<b>973.1</b>
<b>Daily Avg.(mmscfd)</b>	<b>2,687</b>	<b>2,606</b>	<b>2,606</b>	<b>2,620</b>	<b>2,631</b>	<b>2,395</b>	<b>2576</b>	<b>2,409</b>	<b>2,613</b>	<b>2,559</b>	<b>2,479</b>	<b>0</b>	<b>2,562</b>		<b>2,643</b>	<b>2,684</b>	<b>2,666</b>



## Monthly Condensate Production by Fields upto November 2019



Field Name	Jan-19	Feb-19	Mar-19	Apr-19	May-19	Jun-19	Jul-19	Aug-19	Sep-19	Oct-19	Nov-19	Dec-19	Total	Cumulative	2018	2017	2016
														000' bbl			
Bakhrabad	475	462	432	402	550	706	786	732	736	937	855		7,073	1,027	5,022	6,173	7,091
Daily Avg.	15	17	14	13	18	24	25	24	25	30	29	0	21		14	17	229
Bangura	9,547	8,321	8,755	8,380	8,381	7,905	9,092	7,736	8,806	9,041	8,822		94,786	1,160	94,737	103,198	103,416
Daily Avg.	308	297	282	279	270	264	293	250	294	292	294	0	284		260	283	3,336
Beani Bazar	4,207	3,945	4,525	4,262	4,394	4,198	4,268	4,212	4,072	4,180	4,020		46,281	1,613	51,187	68,202	56,146
Daily Avg.	136	141	146	142	142	140	138	27	136	135	134	0	139		140	187	1,811
Bibiyana	286,489	247,882	275,825	268,384	277,796	213,400	271,370	238,522	255,294	259,452	245,451		2,839,865	23,994	3,267,318	3,283,757	3,291,906
Daily Avg.	9,242	8,853	8,898	8,946	8,961	7,113	8,754	7,694	8,510	8,369	8,182	0	8,503		8,952	8,997	106,191
Chattak	0	0	0	0	0	0	0	0	0	0	0	0	0	4	0		
Daily Avg.	0	0	0	0	0	0	0	0	0	0	0	0	0		0		
Fenchuganj	126	80	121	108	90	48	41	27	20	25	29		715	116	1,625	2,462	6,138
Daily Avg.	4	3	4	4	3	2	1	1	1	1	1	0	2		4	7	198
Feni	0	0	0	0	0	0	0	0	0	0	0	0	0	110	0	0	0
Daily Avg.	0	0	0	0	0	0	0	0	0	0	0	0	0		0	0	0
Habiganj	721	610	776	681	642	571	564	550	541	530	543		6,729	137	5,612	3,955	4,143
Daily Avg.	23	22	25	23	21	19	18	18	18	17	18	0	20		15	11	134
Jalalabad	29,901	23,874	25,898	25,716	26,805	23,241	26,311	22,111	28,182	27,847	25,680		285,565	10,425	367,160	437,070	528,191
Daily Avg.	965	853	835	857	865	775	849	713	939	898	856	0	855		1,006	1,197	17,038
Kailas Tila	17,562	17,085	16,738	16,259	1,545	13,773	15,381	14,743	15,982	14,926	13,782		157,776	7,952	189,620	203,979	223,169
Daily Avg.	567	610	540	542	50	459	496	476	533	481	459	0	472		520	559	7,199
Kamta	Production Suspended										0	0		4			
Daily Avg.											0	0		0		0	0
Meghna	589	514	647	678	645	592	605	546	553	583	553		6,505	114	7,947	7,741	7,735
Daily Avg.	19	18	21	23	21	20	20	18	18	19	18	0	19		22	21	250
Moulavi Bazar	104	80	63	53	62	27	41	57	59	85	44		674	118	856	1,128	1,585
Daily Avg.	3	3	2	2	2	1	1	2	2	3	1	0	2		2	3	51

## Monthly Condensate Production by Fields upto November 2019



Field Name	Jan-19	Feb-19	Mar-19	Apr-19	May-19	Jun-19	Jul-19	Aug-19	Sep-19	Oct-19	Nov-19	Dec-19	Total Cumulative 000' bbl	2018	2017	2016	
Narshingdi	1,285	1,131	1,235	1,205	1,217	1,120	785	1,264	1,189	1,209	1,165		12,805	431	15,797	16,656	17,534
Daily Avg.	41	40	40	40	39	37	25	41	40	39	39	0	38		43	46	566
Rashidpur	1,213	1,038	1,083	1,069	1,084	1,542	1,602	1,645	1,544	1,498	1,444		14,761	791	14,393	10,723	14,938
Daily Avg.	39	37	35	36	35	51	52	53	51	48	48	0	44		39	29	482
Saldanadi	19	19	21	20	19	17	60	35	27	25	22		283	59	137	225	386
Daily Avg.	1	1	1	1	1	1	2	1	1	1	1	0	1		0	1	12
Sangu	0	0	0	0	0	0	0	0	0	0	0	0	0	37	0	0	0
Daily Avg.	0	0	0	0	0	0	0	0	0	0	0	0	0	0	0	0	0
Semutang	0	0	0	0	0	0	0	0	2	2	0		4	5	26	99	272
Daily Avg.	0	0	0	0	0	0	0	0	0	0	0	0	0		0	0	9
Shahbazpur	187	148	211	207	207	27	193	216	200	196	137		1,928	8	2,488	1,791	839
Daily Avg.	6	5	7	7	7	1	6	7	7	6	5	0	6		7	5	27
Srikail	3,226	2,920	3,143	2,913	2,950	2,796	2,834	2,776	2,639	2,723	2,684		31,603	160	33,765	37,879	21,075
Daily Avg.	104	104	101	97	95	93	91	90	88	88	89	0	95		93	104	680
Sundalpur	10	9	10	10	9	24	40	11	11	15	12		161	1	121	0	0
Daily Avg.	0	0	0	0	0	1	1	0	0	0	0	0	0		0	0	0
Sylhet	969	864	981	881	901	845	860	838	137	800	759		8,837	804	10,277	15,593	20,532
Daily Avg.	31	31	32	29	29	28	28	27	5	26	25	0	26		28	43	662
Titas	13,655	11,331	12,573	12,503	12,163	10,239	11,065	10,500	11,188	12,347	11,899		129,463	5,353	159,803	154,262	133,133
Daily Avg.	440	405	406	417	392	341	357	339	373	398	397	0	388		438	423	4,295
Begumganj	60	60	57	63	58	54	57	57	65	56	53		641	1	201	0	0
Daily Avg.	2	0	0	0	0	2	2	2	0	2	2	0	2		1	0	0
Rupganj	0	0	0	0	0	0	0	0	0	0	0		0	1	0	1,133	
Daily Avg.	0	0	0	0	0	0	0	0	0	0	0	0	0		0	3	
<b>Total (000'bbl)</b>	<b>370</b>	<b>320</b>	<b>353</b>	<b>344</b>	<b>340</b>	<b>281</b>	<b>346</b>	<b>307</b>	<b>331</b>	<b>336</b>	<b>318</b>	<b>0</b>	<b>3,646</b>	<b>54,423</b>	<b>4,228</b>	<b>4,356</b>	<b>4,438</b>
<b>Daily Avg. (000'bbl)</b>	<b>11.9</b>	<b>11.4</b>	<b>11.4</b>	<b>11.5</b>	<b>11.0</b>	<b>9</b>	<b>11.2</b>	<b>9.9</b>	<b>11.0</b>	<b>10.9</b>	<b>11</b>	<b>0</b>	<b>11</b>		<b>11.6</b>	<b>11.9</b>	<b>12.2</b>

Note: Historical condensate figure of Sangu available from 2006. Sylhet available from August 1964

## Monthly Water Production by Fields in November 2019



Field Name	Jan-19	Feb-19	Mar-19	Apr-19	May-19	Jun-19	Jul-19	Aug-19	Sep-19	Oct-19	Nov-19	Dec-19	Total	2,018	2,017
Bakhrabad	2,117	1,708	1,795	1,720	2,049	2,172	2,259	2,269	2,192	2,265	2,167		22,713	28,218	8,419
Daily Avg.	68	61	58	57	66	72	73	73	73	73	72	0	68	77	
Bangura	3,330	3,016	3,301	3,107	3,197	2,968	3,296	2,797	3,266	3,272	3,260		34,810	43,917	11,705
Daily Avg.	107	108	106	104	103	99	106	90	109	106	109	0	104	120	
Beani Bazar	9,793	8,568	9,561	9,283	10,305	10,427	11,230	11,705	11,838	12,547	12,384		117,642	109,854	24,865
Daily Avg.	316	306	308	309	332	348	362	378	395	405	413	0	352	301	
Bibiyana	16,351	14,524	15,756	15,544	16,508	15,623	17,001	16,277	16,420	16,751	16,179		176,934	194,651	47,219
Daily Avg.	527	519	508	518	533	521	548	525	547	540	539	0	530	533	
Chattak	0	0	0	0	0	0	0	0	0	0	0	0			
Daily Avg.	0	0	0	0	0	0	0	0	0	0	0	0	0	0	
Fenchuganj	6,323	3,006	3,558	3,470	2,712	2,861	3,603	2,667	1,840	1,643	1,562		33,243	74,969	6,700
Daily Avg.	204	107	115	116	87	95	116	86	61	53	52	0	100	205	
Feni	0	0	0	0	0	0	0	0	0	0	0	0	0	0	0
Daily Avg.	0	0	0	0	0	0	0	0	0	0	0	0	0	0	0
Habiganj	2,532	2,133	1,034	874	988	820	793	775	782	818	768		12,317	39,104	5,197
Daily Avg.	82	76	33	29	32	27	26	25	26	26	26	0	37	107	
Jalalabad	4,717	4,157	4,424	4,369	4,254	3,659	3,872	3,213	4,920	5,577	6,698		49,860	55,950	12,915
Daily Avg.	152	148	143	146	137	122	125	104	164	180	223	0	149	153	
Kailas Tila	3,934	3,519	3,851	3,562	1,772	3,011	5,189	3,128	4,103	7,579	14,242		53,890	43,233	6,809
Daily Avg.	127	126	124	119	57	100	167	101	137	244	475	0	161	118	
Kamta	0	0	0	0	0	0	0	0	0	0	0	0			
Daily Avg.	0	0	0	0	0	0	0	0	0	0	0	0	0	0	
Meghna	211	429	525	631	631	651	693	639	790	884	929		7,013	2,014	551
Daily Avg.	7	15	17	21	20	22	22	21	26	29	31	0	21	6	
Moulavi Baza	1,379	710	735	550	427	189	200	237	224	409	145		5,206	13,965	754
Daily Avg.	44	25	24	18	14	6	6	8	7	13	5	0	16	38	
Narshingdi	883	798	888	879	939	806	466	884	854	891	881		9,169	10,374	2,645
Daily Avg.	28	29	29	29	30	27	15	29	28	29	29	0	27	28	
Rashidpur	13,567	12,332	13,512	12,940	13,181	12,638	13,173	13,322	13,033	13,780	13,356		144,834	137,406	30,969
Daily Avg.	438	440	436	431	425	421	425	430	434	445	445	0	434	376	
Saldanadi	129	115	126	127	131	127	137	140	132	139	133		1,436	813	387
Daily Avg.	4	4	4	4	4	4	4	5	4	4	4	0	4	2	

## Monthly Water Production by Fields in November 2019



Field Name	Jan-19	Feb-19	Mar-19	Apr-19	May-19	Jun-19	Jul-19	Aug-19	Sep-19	Oct-19	Nov-19	Dec-19	Total	2,018	2,017
Sangu	0	0	0	0	0	0	0	0	0	0	0	0	0	0	0
Daily Avg.	0	0	0	0	0	0	0	0	0	0	0	0	0	0	0
Semutang	45	47	69	63	65	63	74	71	100	112	132		839	3,002	719
Daily Avg.	1	2	2	2	2	2	2	2	3	4	4	0	3	8	
Shahbazpur	1,789	1,679	2,096	2,180	2,244	2,257	2,038	2,306	2,191	2,152	1,557		22,489	22,110	3,912
Daily Avg.	58	60	68	73	72	75	66	74	73	69	52	0	67	61	
Srikail	1,649	1,517	2,021	1,641	1,662	1,592	1,654	1,698	1,557	1,632	1,579		18,201	18,432	4,904
Daily Avg.	53	54	65	55	54	53	53	55	52	53	53	0	54	50	
Sundalpur	26	24	27	27	27	32	48	28	27	30	28		322	219	0
Daily Avg.	1	1	1	1	1	1	2	1	1	1	1	0	1	1	
Sylhet	2,312	2,022	2,221	2,156	2,234	2,511	4,664	5,098	401	5,222	5,175		34,016	20,362	1,298
Daily Avg.	75	72	72	72	72	84	150	164	13	168	173	0	102	56	
Titas	49,706	45,683	50,613	49,852	54,221	50,778	53,773	54,016	30,523	26,704	25,711		491,580	556,608	126,334
Daily Avg.	1,603	1,632	1,633	1,662	1,749	1,693	1,735	1,742	1,017	861	857	0	1,472	1,525	
Begumganj	69	54	61	59	59	67	66	56	62	64	59		676	207	0
Daily Avg.	2	2	2	2	2	2	2	2	2	2	2	0	2	1	
Rupganj	0	0	0	0	0	0	0	0	0	0	0		0	0	34
Daily Avg.	0	0	0	0	0	0	0	0	0	0	0	0	0	0	0
<b>Total (000'bl)</b>	<b>120,860</b>	<b>106,040</b>	<b>116,173</b>	<b>113,034</b>	<b>117,606</b>	<b>113,251</b>	<b>124,229</b>	<b>121,326</b>	<b>95,255</b>	<b>102,469</b>	<b>106,946</b>	<b>0</b>	<b>1,237,191</b>	<b>1,375,408</b>	<b>296</b>
<b>Daily Avg. (000'bbl)</b>	<b>3,899</b>	<b>3,787</b>	<b>3,748</b>	<b>3,768</b>	<b>3,794</b>	<b>3,775</b>	<b>4,007</b>	<b>3,914</b>	<b>3,175</b>	<b>3,305</b>	<b>3,565</b>	<b>0</b>	<b>3,704</b>	<b>3,768</b>	<b>1</b>

## Conditions of Field and Well upto November 2019



Well	company	well type	Discovery	production start	Drilled depth (ft)	Pressure	Pressure type	Completion Zone
<b>Field : Bakharabad</b>								
BKB-1	BGFCL	Vertical	1969	June,1969	9309		FWHP	J
BKB-2	BGFCL	Directional	1969	October,1981	7496	248-274	FWHP	G
BKB-3	BGFCL	Directional	1969	April,1982	9339	356-412	FWHP	G
BKB-4	BGFCL	Directional	1969	June,1982	9430			D
BKB-5	BGFCL	Directional	1969	Sept,1982	9675	1555-1646	FWHP	B
BKB-6	BGFCL	Directional	1969	March,1989	8785			J
BKB-7	BGFCL	Directional	1969	July,1989	8605		FWHP	J
BKB-8	BGFCL	Directional	1969	Sept,1989	8840	490-523	FWHP	J
BKB-9	BGFCL	Vertical	1969	August,2013	8318	1005-1097	FWHP	G
BKB-10	BGFCL	Directional	1969	June,2016	9291	1010-1102	FWHP	K
<b>Field : Bangura</b>								
Bangura-1	Tullow		2004			887-940	FWHP	D
Bangura-2	Tullow		2004			587-685	FWHP	D/E
Bangura-3	Tullow		2004			719-789	FWHP	D
Bangura-6	Tullow		2004			708-780	FWHP	D
Bangura-5	Tullow		2004			579-621	FWHP	D
<b>Field : Beani Bazar</b>								
BB-1	SGFL		1981	July,1999	13480	580-620	SIWHP	Upper
BB-2	SGFL		1981	July,1999	12048	3210-3220	FWHP	Upper
<b>Field : Bibiyana</b>								
BY-1	Chevron		1998			1547-2007	FWHP	BB60, BB66
BY-2	Chevron		1998			1313-1390	FWHP	BB60, BH20A, BH20E
BY-3	Chevron		1998			1363-1403	FWHP	BB70
BY-4	Chevron		1998			1330-1390	FWHP	BH10
BY-5	Chevron		1998			1254-1299	FWHP	BH20A, BH20B, BH20C, BH20D
BY-6	Chevron		1998			1250-1486	FWHP	BB70
BY-7	Chevron		1998			1454-1566	FWHP	BH10
BY-8	Chevron		1998			1270-1297	FWHP	BH20A, BH20B
BY-9	Chevron		1998			1243-1273	FWHP	BH10
BY-10	Chevron		1998			1465-1533	FWHP	BB60
BY-11	Chevron		1998			1260-1284	FWHP	BH20A, BH20B
BY-12	Chevron		1998			1259-1332	FWHP	BB70
BY-13	Chevron		1998			1300-1356	FWHP	BH20A, BH20B
BY-14	Chevron		1998			1342-1632	FWHP	BH20A, BH20B
BY-15	Chevron		1998			2189-2240	FWHP	BB60
BY-16	Chevron		1998			1381-1644	FWHP	BH10, BH20D

## Conditions of Field and Well upto November 2019



Well	company	well type	Discovery	production start	Drilled depth (ft)	Pressure	Pressure type	Completion Zone
BY-17	<i>Chevron</i>		<i>1998</i>			<i>2104-2229</i>	<i>FWHP</i>	<i>BB60</i>
BY-18	<i>Chevron</i>		<i>1998</i>			<i>1904-2218</i>	<i>FWHP</i>	<i>BB60</i>
BY-19	<i>Chevron</i>		<i>1998</i>			<i>1354-1477</i>	<i>FWHP</i>	<i>BH10, BH20A</i>
BY-20	<i>Chevron</i>		<i>1998</i>			<i>1248-1262</i>	<i>FWHP</i>	<i>BH20D, BH20A, BH10</i>
BY-21	<i>Chevron</i>		<i>1998</i>			<i>1333-1348</i>	<i>FWHP</i>	<i>BH20A, BH20B, BH10</i>
BY-22	<i>Chevron</i>		<i>1998</i>			<i>1552-1586</i>	<i>FWHP</i>	<i>BB60</i>
BY-23	<i>Chevron</i>		<i>1998</i>			<i>1739-2021</i>	<i>FWHP</i>	<i>BH10, BH20A, BH20B, BH20C</i>
BY-24	<i>Chevron</i>		<i>1998</i>			<i>1337-2091</i>	<i>FWHP</i>	<i>BB60</i>
BY-25	<i>Chevron</i>		<i>1998</i>			<i>1728-1857</i>	<i>FWHP</i>	<i>BB60, BB66</i>
BY-26	<i>Chevron</i>		<i>1998</i>			<i>1877-2094</i>	<i>FWHP</i>	<i>BB60, BB64</i>
<b>Field : Chattak</b>								
Ch-1	SGFL		1959					
<b>Field : Fenchuganj</b>								
Fenchuganj-2	<i>BAPEX</i>		<i>1988</i>	<i>May, 2004</i>				
Fenchuganj-3	<i>BAPEX</i>		<i>1988</i>	<i>February, 2005</i>		<i>2004-2010</i>		<i>upper</i>
Fenchuganj-4	<i>BAPEX</i>		<i>1988</i>			<i>2037-2065</i>		
<b>Field : Feni</b>								
Feni-1	<i>BAPEX</i>		<i>1981</i>					
Feni-2	<i>BAPEX</i>		<i>1981</i>					
Feni-3	<i>BAPEX</i>		<i>1981</i>					
Feni-4	<i>BAPEX</i>		<i>1981</i>					
Feni-5	<i>BAPEX</i>		<i>1981</i>					
<b>Field : Habiganj</b>								
Hbj-1	<i>BGFCL</i>	<i>Vertical</i>	<i>1963</i>	<i>Feb, 1969</i>	<i>11500</i>		<i>FWHP</i>	<i>upper</i>
Hbj-2	<i>BGFCL</i>	<i>Vertical</i>	<i>1963</i>	<i>Feb, 1969</i>	<i>5100</i>		<i>FWHP</i>	<i>upper</i>
Hbj-3	<i>BGFCL</i>	<i>Vertical</i>	<i>1963</i>	<i>July, 1985</i>	<i>5282</i>	<i>1478-1486</i>	<i>FWHP</i>	<i>upper</i>
Hbj-4	<i>BGFCL</i>	<i>Vertical</i>	<i>1963</i>	<i>May, 1985</i>	<i>5249</i>	<i>1460-1467</i>	<i>FWHP</i>	<i>upper</i>
Hbj-5	<i>BGFCL</i>	<i>Directional</i>	<i>1963</i>	<i>Feb, 1992</i>	<i>11552</i>	<i>1440-1446</i>	<i>FWHP</i>	<i>upper</i>
Hbj-6	<i>BGFCL</i>	<i>Vertical</i>	<i>1963</i>	<i>Feb, 1992</i>	<i>5515</i>	<i>1375-1379</i>	<i>FWHP</i>	<i>upper</i>
Hbj-7	<i>BGFCL</i>	<i>Vertical</i>	<i>1963</i>	<i>April, 2000</i>	<i>10236</i>	<i>1331-1139</i>	<i>FWHP</i>	<i>upper</i>
Hbj-8	<i>BGFCL</i>	<i>Vertical</i>	<i>1963</i>	<i>May, 2000</i>	<i>5280</i>			<i>upper</i>
Hbj-9	<i>BGFCL</i>	<i>Vertical</i>	<i>1963</i>	<i>July, 1998</i>	<i>5249</i>			<i>upper</i>
Hbj-10	<i>BGFCL</i>	<i>Vertical</i>	<i>1963</i>	<i>Apr, 2000</i>	<i>5133</i>	<i>1322-1331</i>	<i>FWHP</i>	<i>upper</i>
Hbj-11	<i>BGFCL</i>	<i>Vertical</i>	<i>1963</i>	<i>February, 2008</i>	<i>10499</i>	<i>1417-1423</i>	<i>FWHP</i>	<i>upper</i>
<b>Field : Jalalabad</b>								
JB-1	<i>Chevron</i>		<i>1989</i>			<i>1333-1436</i>	<i>FWHP</i>	<i>BB60, BB50</i>

## Conditions of Field and Well upto November 2019



Well	company	well type	Discovery	production start	Drilled depth (ft)	Pressure	Pressure type	Completion Zone
JB-2	<i>Chevron</i>		<i>1989</i>			<i>1279-1294</i>	<i>FWHP</i>	<i>BB50, BB60</i>
JB-3	<i>Chevron</i>		<i>1989</i>			<i>1332-1375</i>	<i>FWHP</i>	<i>BB50, BB60</i>
JB-4	<i>Chevron</i>		<i>1989</i>			<i>1365-1425</i>	<i>FWHP</i>	<i>BB60</i>
JB-6	<i>Chevron</i>		<i>1989</i>			<i>1354-1362</i>	<i>FWHP</i>	<i>BB60, BB50</i>
JB-7	<i>Chevron</i>		<i>1989</i>			<i>1666-1679</i>	<i>FWHP</i>	<i>BB20</i>
JB-8	<i>Chevron</i>		<i>1989</i>			<i>1362-1370</i>	<i>FWHP</i>	<i>BB50, BB60</i>
<b>Field : Kailas Tila</b>								
KTL-1	<i>SGFL</i>		<i>1962</i>	<i>June, 1983</i>	<i>12417</i>	<i>0</i>	<i>SIWHP</i>	
KTL-2	<i>SGFL</i>		<i>1962</i>	<i>Feb, 1995</i>		<i>2225-2230</i>	<i>FWHP</i>	
KTL-3	<i>SGFL</i>		<i>1962</i>	<i>March, 1995</i>		<i>2470-2495</i>	<i>FWHP</i>	
KTL-4	<i>SGFL</i>		<i>1962</i>	<i>March, 1997</i>		<i>2360-2410</i>	<i>FWHP</i>	
KTL-5	<i>SGFL</i>		<i>1962</i>	<i>Sep, 2006</i>		<i>0</i>	<i>SIWHP</i>	
KTL-6	<i>SGFL</i>		<i>1962</i>	<i>Aug, 2007</i>		<i>2490-2495</i>	<i>FWHP</i>	
KTL-7	<i>SGFL</i>		<i>1962</i>			<i>0</i>	<i>SIWHP</i>	
<b>Field : Kamta</b>								
Kamta-1	<i>BGFCL</i>	<i>Vertical</i>	<i>1981</i>	<i>july,1982</i>	<i>11857</i>			<i>N/A</i>
<b>Field : Meghna</b>								
M-1	<i>BGFCL</i>	<i>Vertical</i>	<i>2004</i>	<i>july,1990</i>	<i>10069</i>	<i>1400-1450</i>	<i>FWHP</i>	<i>A,E,F &amp; G</i>
<b>Field : Moulavi Bazar</b>								
MV Bazar-2	<i>Chevron</i>		<i>1997</i>			<i>800-820</i>	<i>FWHP</i>	<i>BB70</i>
MV Bazar-3	<i>Chevron</i>		<i>1997</i>			<i>800-820</i>	<i>FWHP</i>	<i>BB70</i>
MV Bazar-4	<i>Chevron</i>		<i>1997</i>			<i>946-952</i>	<i>FWHP</i>	<i>BB20</i>
MV Bazar-5	<i>Chevron</i>		<i>1997</i>			<i>0</i>	<i>SIWHP</i>	<i>BB60</i>
MV Bazar-6	<i>Chevron</i>		<i>1997</i>			<i>822-890</i>	<i>FWHP</i>	<i>BB20</i>
MV Bazar-7	<i>Chevron</i>		<i>1997</i>			<i>844-901</i>	<i>FWHP/SIWHP</i>	<i>BB20</i>
MV Bazar-9	<i>Chevron</i>		<i>1997</i>			<i>0</i>	<i>SIWHP</i>	<i>BB46, BB48, BB60</i>
<b>Field : Narshingdi</b>								
N-1	<i>BGFCL</i>	<i>vertical</i>	<i>1990</i>	<i>october,1990</i>	<i>11320</i>	<i>1143-1197</i>	<i>FWHP</i>	<i>BL</i>
N-2	<i>BGFCL</i>	<i>vertical</i>	<i>1990</i>	<i>february,2007</i>	<i>10778</i>	<i>1015-1097</i>	<i>FWHP</i>	<i>BL</i>
<b>Field : Rashidpur</b>								
RP-1	<i>SGFL</i>		<i>1960</i>			<i>1290-1291</i>	<i>FWHP</i>	<i>Upper</i>
RP-2	<i>SGFL</i>		<i>1960</i>			<i>73</i>	<i>SIWHP</i>	<i>Lower</i>
RP-3	<i>SGFL</i>		<i>1960</i>			<i>1548-1568</i>	<i>FWHP</i>	<i>Lower</i>
RP-4	<i>SGFL</i>		<i>1960</i>			<i>1450-1655</i>	<i>FWHP</i>	<i>Lower</i>
RP-5	<i>SGFL</i>		<i>1960</i>			<i>2291</i>	<i>SIWHP</i>	<i>Lower</i>
RP-6	<i>SGFL</i>		<i>1960</i>			<i>870</i>	<i>SIWHP</i>	<i>A</i>

## Conditions of Field and Well upto November 2019



Well	company	well type	Discovery	production start	Drilled depth (ft)	Pressure	Pressure type	Completion Zone
RP-7	SGFL		1960			1308-1338	FWHP	Lower
RP-8	SGFL		1960			1600-1625	FWHP	Upper
<b>Field : Salda Nadi</b>								
Salda-1	BAPEX		1995					
Salda-2	BAPEX		1995					
Salda-3	BAPEX	Directional	1995	February, 2012		639-640, 698-700		Upper/Lower
Salda-4	BAPEX		1995					
<b>Field : Sangu</b>								
Sangu-1	BGFCL		1996					
Sangu-3z	BGFCL		1996					
Sangu-4	BGFCL		1996					
Sangu-5	BGFCL		1996					
Sangu-7	BGFCL		1996					
Sangu-8	BGFCL		1996					
Sangu-9	BGFCL		1996					
Sangu-10	BGFCL		1996					
Sangu-11	BGFCL		1996					
<b>Field : Semutang</b>								
Semutang-5	BAPEX		1967			280-508		Lower Zone
Semutang-6	BAPEX		1967			750-1302		
<b>Field : Shahbazpur</b>								
Shahbazpur-1	BAPEX		1995	May, 2009		2310-3543		Lower Zone
Shahbazpur-2	BAPEX		1995			3541-4133		Lower Zone
Shahbazpur-3	BAPEX		1995			4300		Upper Zone
Shahbazpur-4	BAPEX		1995			4250		Upper Zone
<b>Field : Srikail</b>								
Srikail-2	BAPEX		2012			990-1016		Upper & Lower D
Srikail-3	BAPEX		2012			981-1043		Upper & Lower D
Srikail-4	BAPEX		2012			1018-1068		Upper & Lower D
<b>Field : Sundalpur</b>								
Sundalpur -1	BAPEX		2011					
Sundalpur -2	BAPEX		2011					
<b>Field : Sylhet</b>								
Sylhet-3	SGFL		1955	Aug, 1958				
Sylhet-6	SGFL		1955	Aug, 1964		800-850	SIWHP	
Sylhet-7	SGFL		1955	Apr, 2005		1750-1820	FWHP	Lower Bokabil

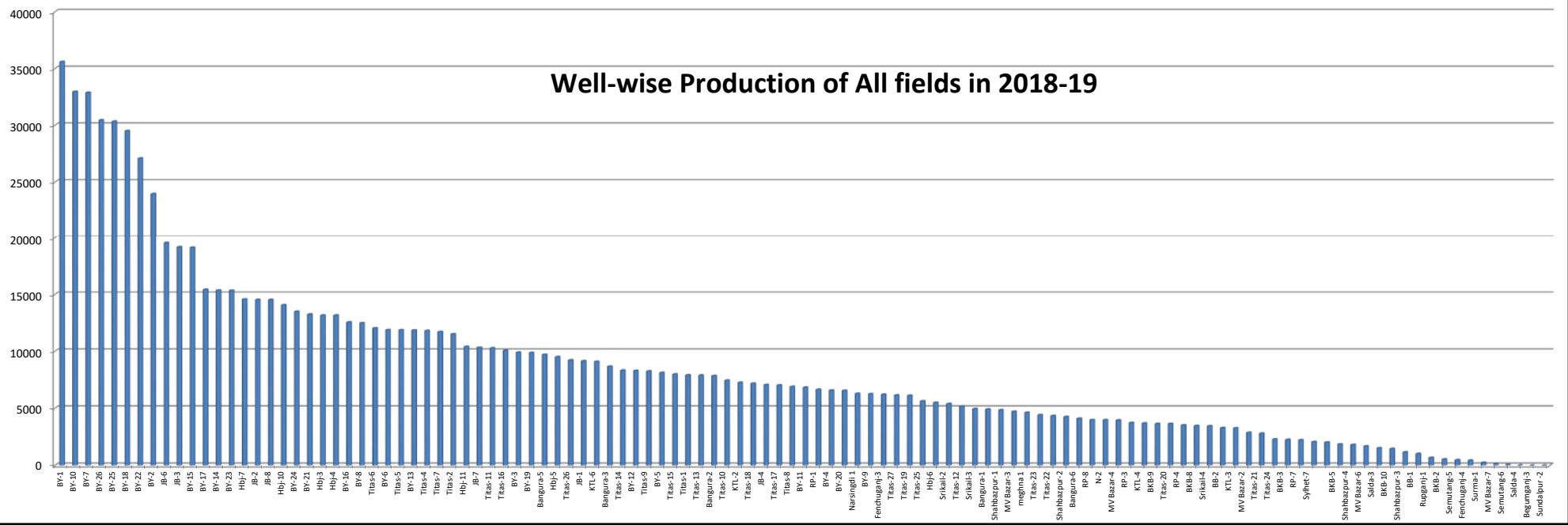


## Conditions of Field and Well upto November 2019

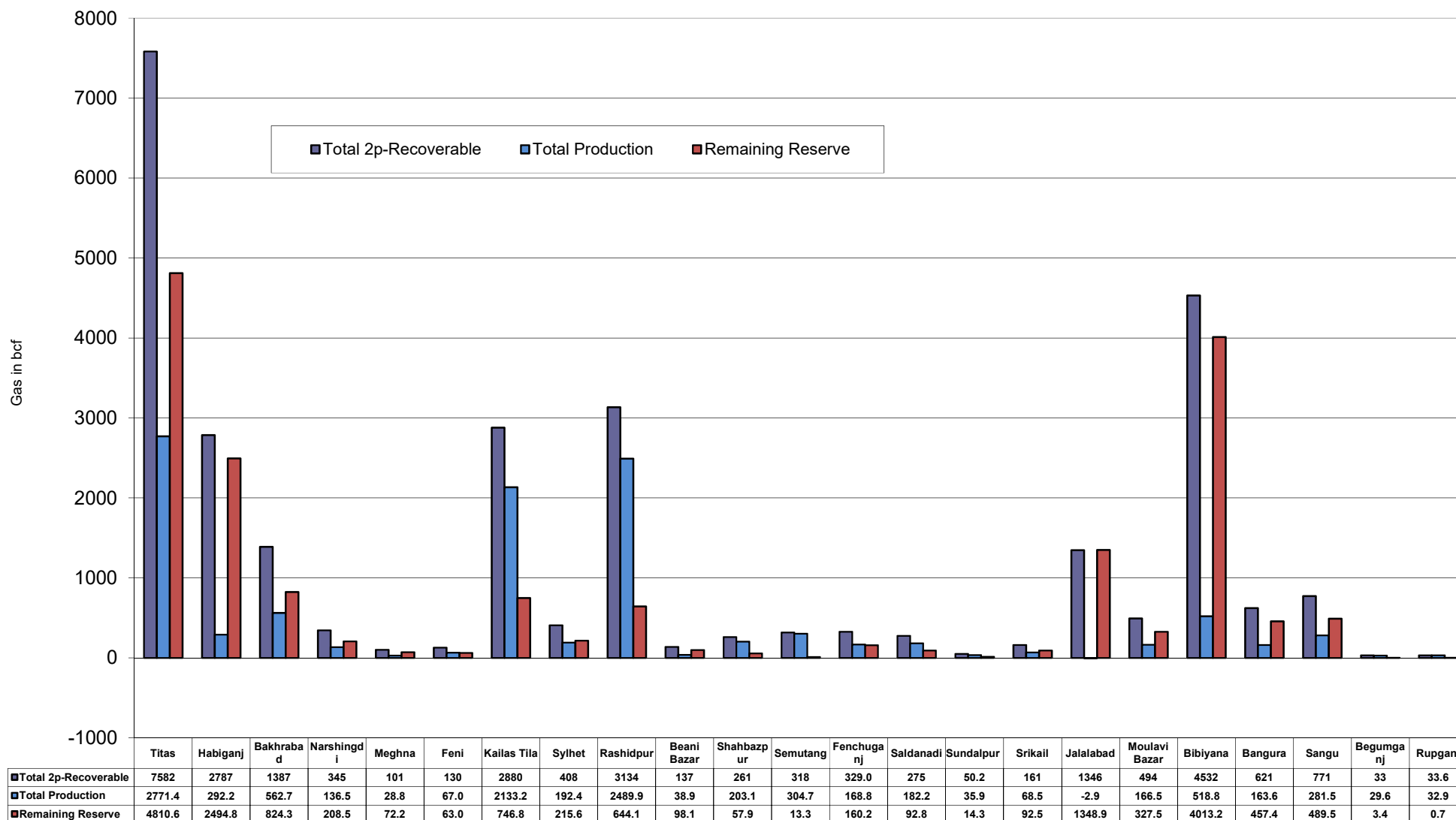


Well	company	well type	Discovery	production start	Drilled depth (ft)	Pressure	Pressure type	Completion Zone
Surma-1	SGFL		1955	June, 2010		230	SIWHP	C & D
<b>Field : Titas</b>								
Titas-1	BGFCL	vertical	1962	Mar,1969	12325	900-925	FWHP	A
Titas-2	BGFCL	vertical	1962	Fen,1969	10574	960-1020	FWHP	A
Titas-3	BGFCL	vertical	1962	sept,1969	9315	0	FWHP	A
Titas-4	BGFCL	vertical	1962	oct,1969	9350	1020-1070	FWHP	A
Titas-5	BGFCL	Directional	1962	jan,1981	10805	990-1035	FWHP	A
Titas-6	BGFCL	vertical	1962	Feb,1984	10072	1195-1225	FWHP	A
Titas-7	BGFCL	Directional	1962	July,1985	11006	1090-1160	FWHP	A
Titas-8	BGFCL	Directional	1962	sept,1985	11760	1000-1030	FWHP	B & C
Titas-9	BGFCL	Directional	1962	jan,1988	11893	1040-1085	FWHP	B & C
Titas-10	BGFCL	Directional	1962	may,1988	12139	1140-1180	FWHP	A
Titas-11	BGFCL	vertical	1962	Jun,1991	10462	1275-1310	FWHP	A
Titas-12	BGFCL	Directional	1962	July,2002	9873	1465-1500	FWHP	A
Titas-13	BGFCL	Directional	1962	June,2000	11487	1085-1115	FWHP	A
Titas-14	BGFCL	Directional	1962	June,2000	11004	1200-1250	FWHP	A
Titas-15	BGFCL	vertical	1962	may,2006	10446	0	FWHP	A
Titas-16	BGFCL	Directional	1962	dec,2005	11673	1205-1225	FWHP	A
Titas-17	BGFCL	vertical	1962	feb,2013	9424	1145-1175	FWHP	A
Titas-18	BGFCL	Directional	1962	august,2013	10932	1165-1190	FWHP	A
Titas-19	BGFCL	Directional	1962	may,2014	12730	1365-1415	FWHP	A
Titas-20	BGFCL	Directional	1962	oct,2013	11585	1370-1440	FWHP	A
Titas-21	BGFCL	Directional	1962	dec,2013	11631	1260-1285	FWHP	A
Titas-22	BGFCL	Directional	1962	march,2014	11926	990-1025	FWHP	A
Titas-27	BGFCL	Directional	1962	april,2014	10292	1245-1265	FWHP	A
Titas-23	BGFCL	Directional	1962	feb,2017	11988	2265-2340	FWHP	C
Titas-24	BGFCL	Directional	1962	oct,2016	12686	1120-1245	FWHP	C
Titas-25	BGFCL	vertical	1962	march,2016	11680	1300-1340	FWHP	A
Titas-26	BGFCL	Directional	1962	july,2016	12618	1840-1875	FWHP	C
<b>Field : Begumganj</b>								
Begumganj-3	BAPEX		1977					
<b>Field : Rupganj</b>								
Rupganj-1	BAPEX		2014			38-88		

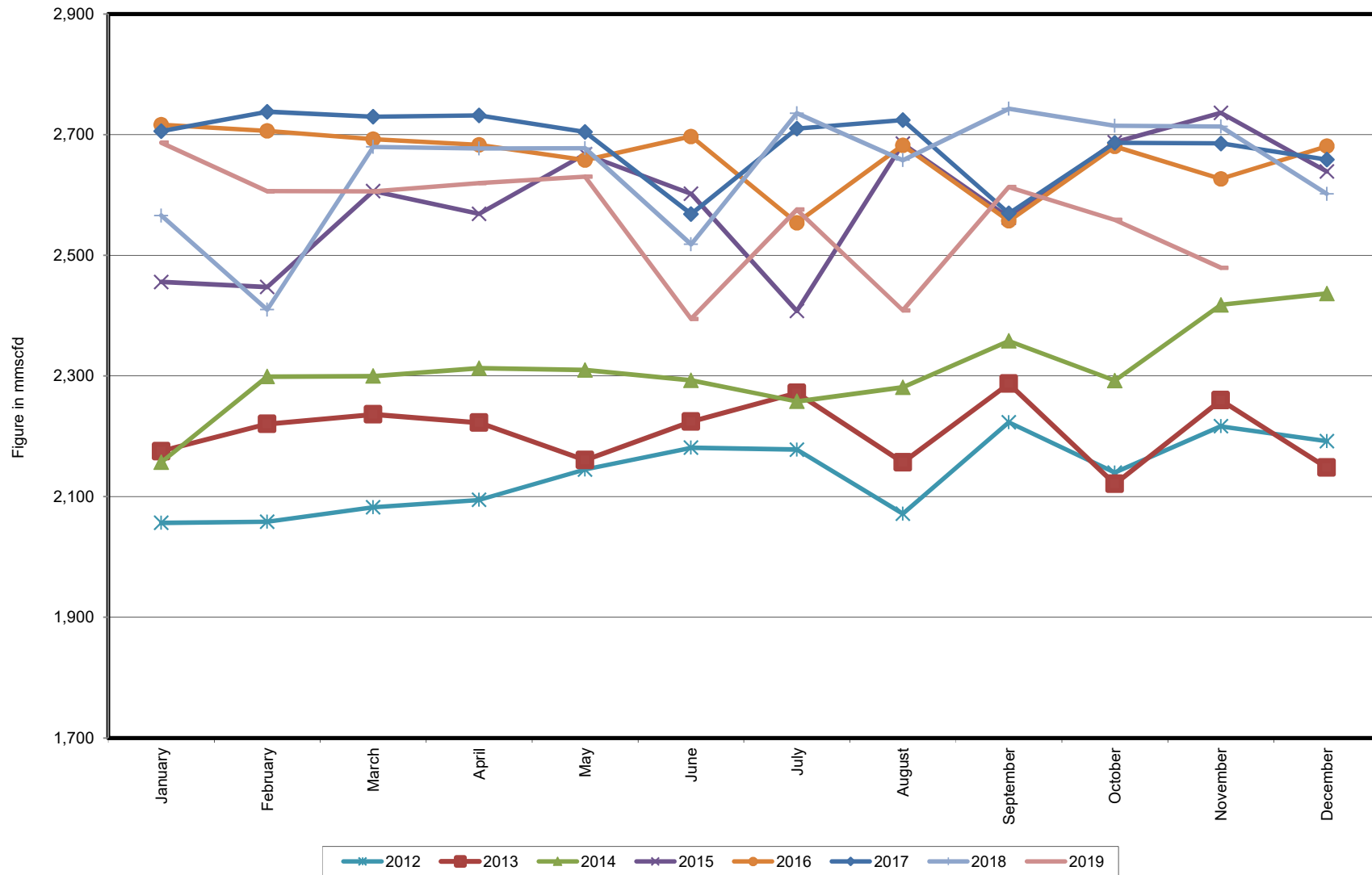
### Well-wise Production of All fields in 2018-19



## Reserve, Production and Remaining Reserve as of November 2019



## Daily Avg. Production From January 2012 to November 2019



## Field Wise Daily Avg. Production November 2019

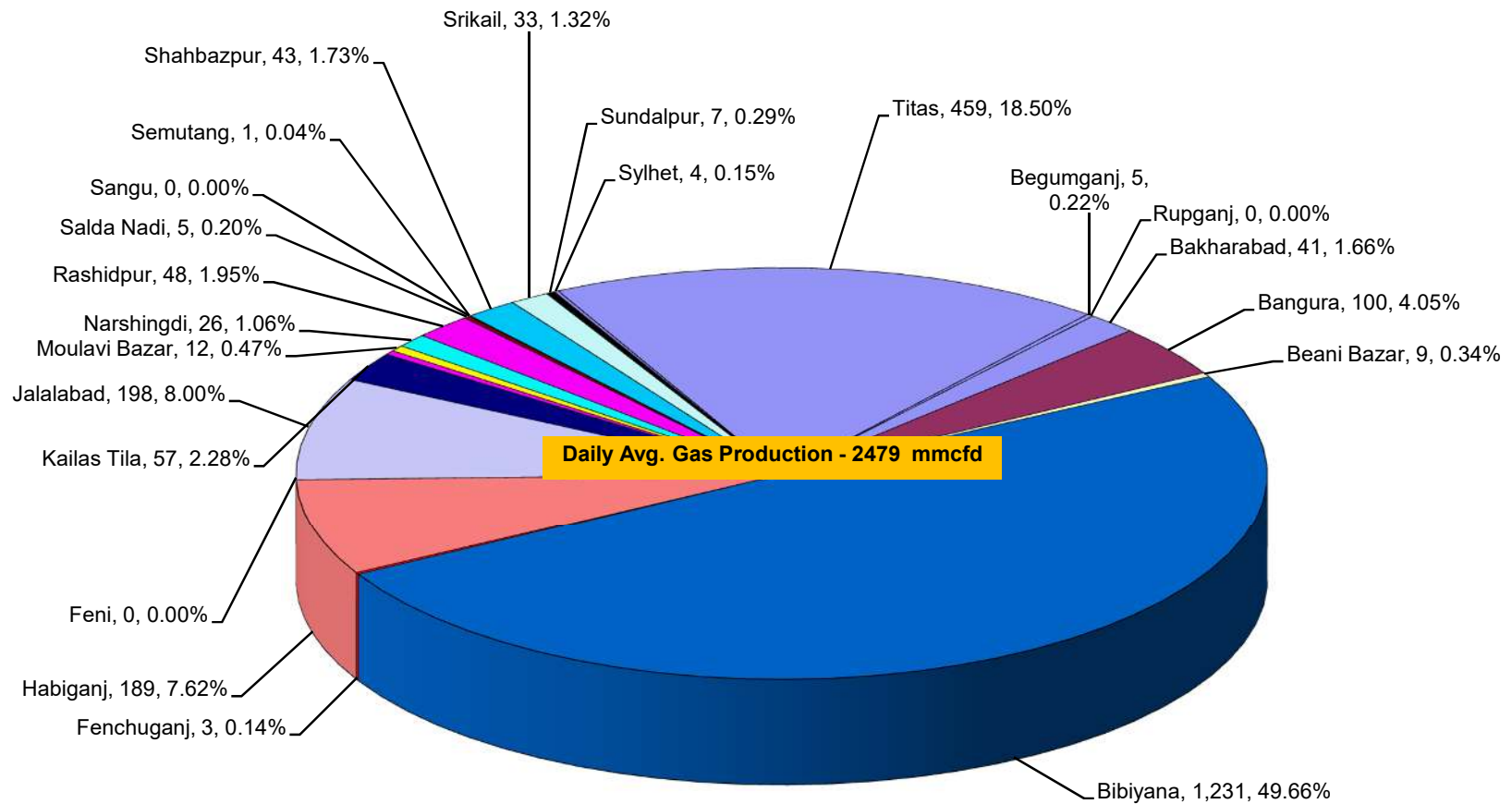
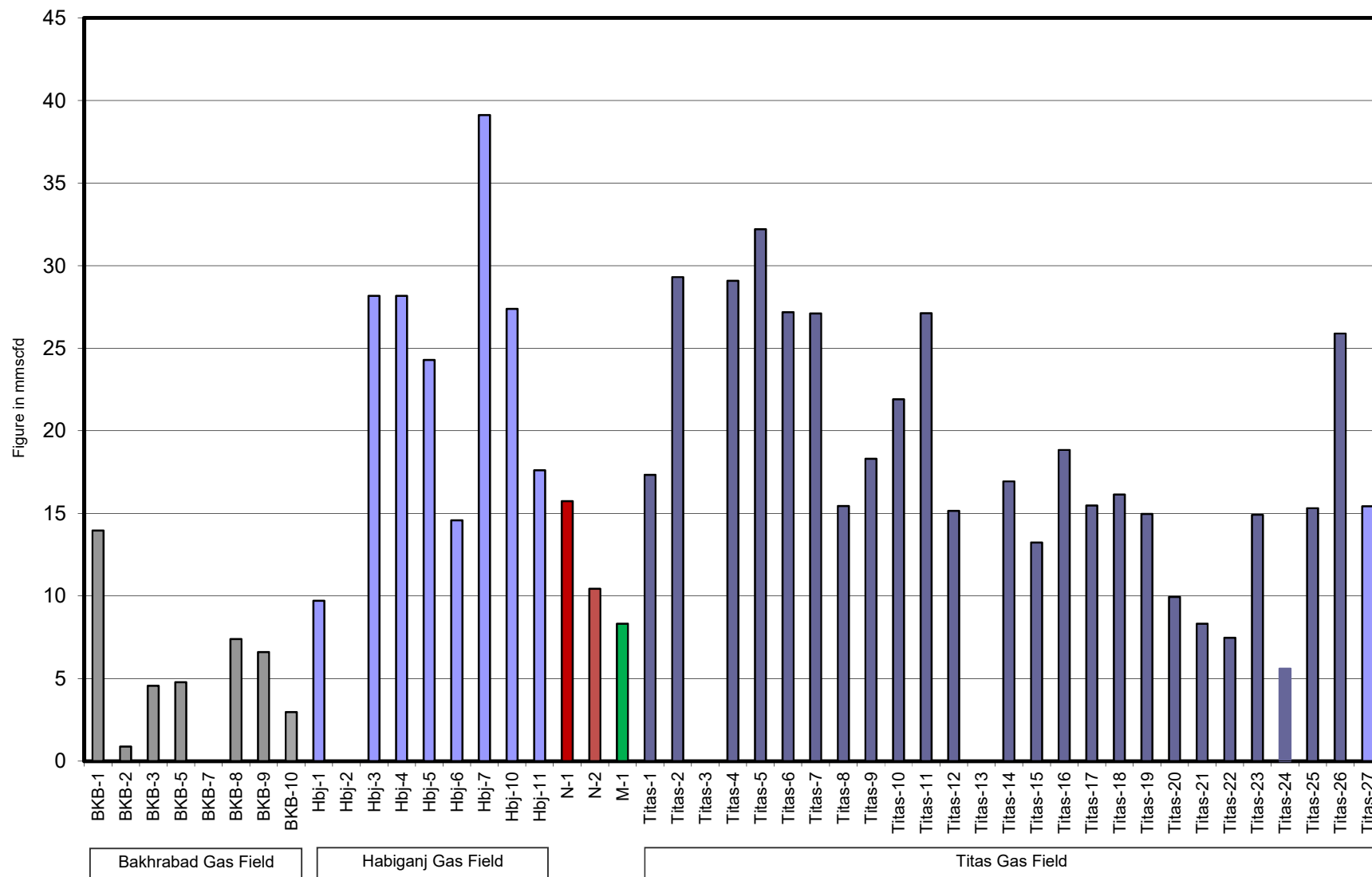


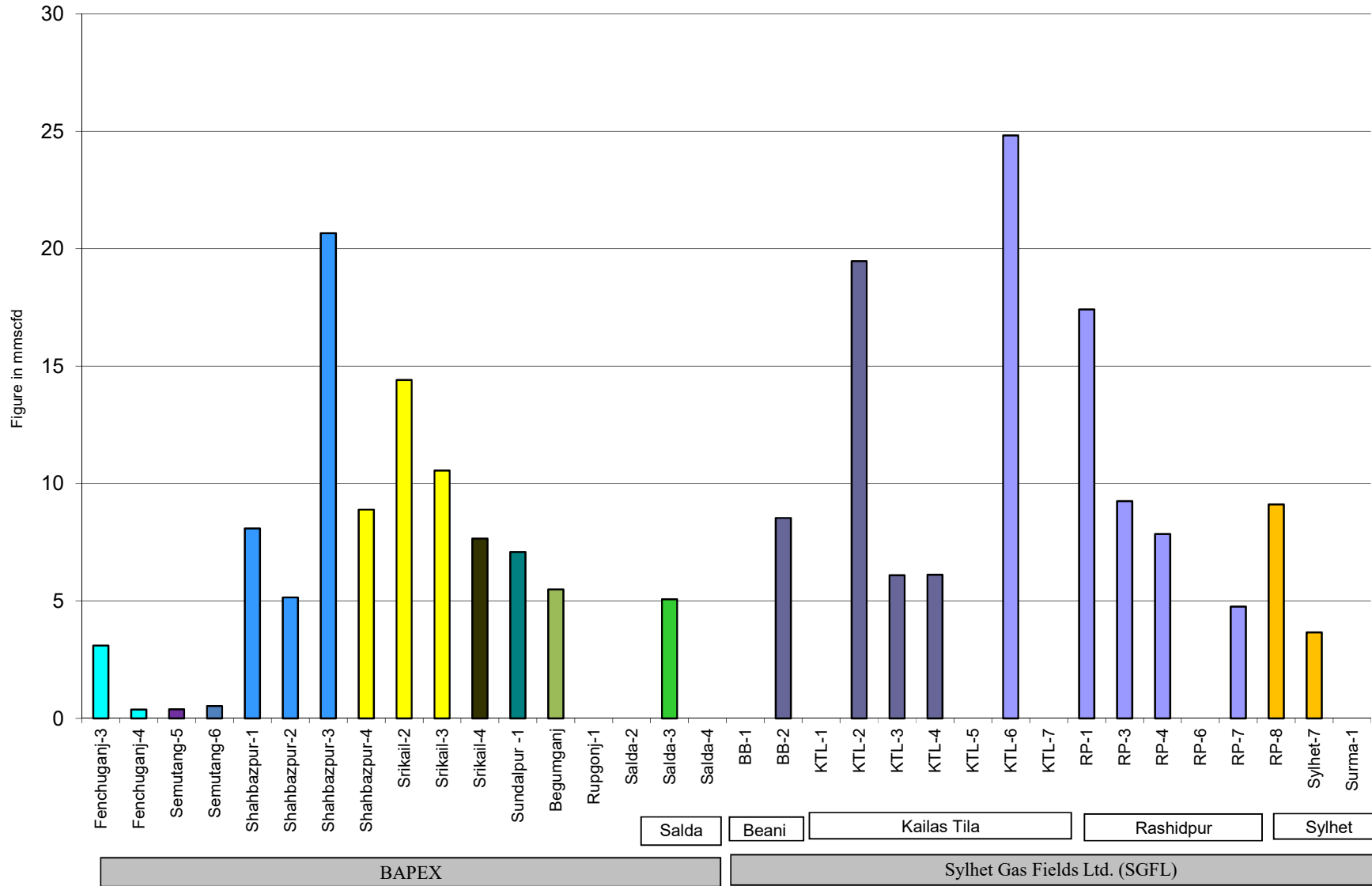
Figure in mmcf and % of total production

## Wellwise Daily Avg. Production- BGFCL November 2019

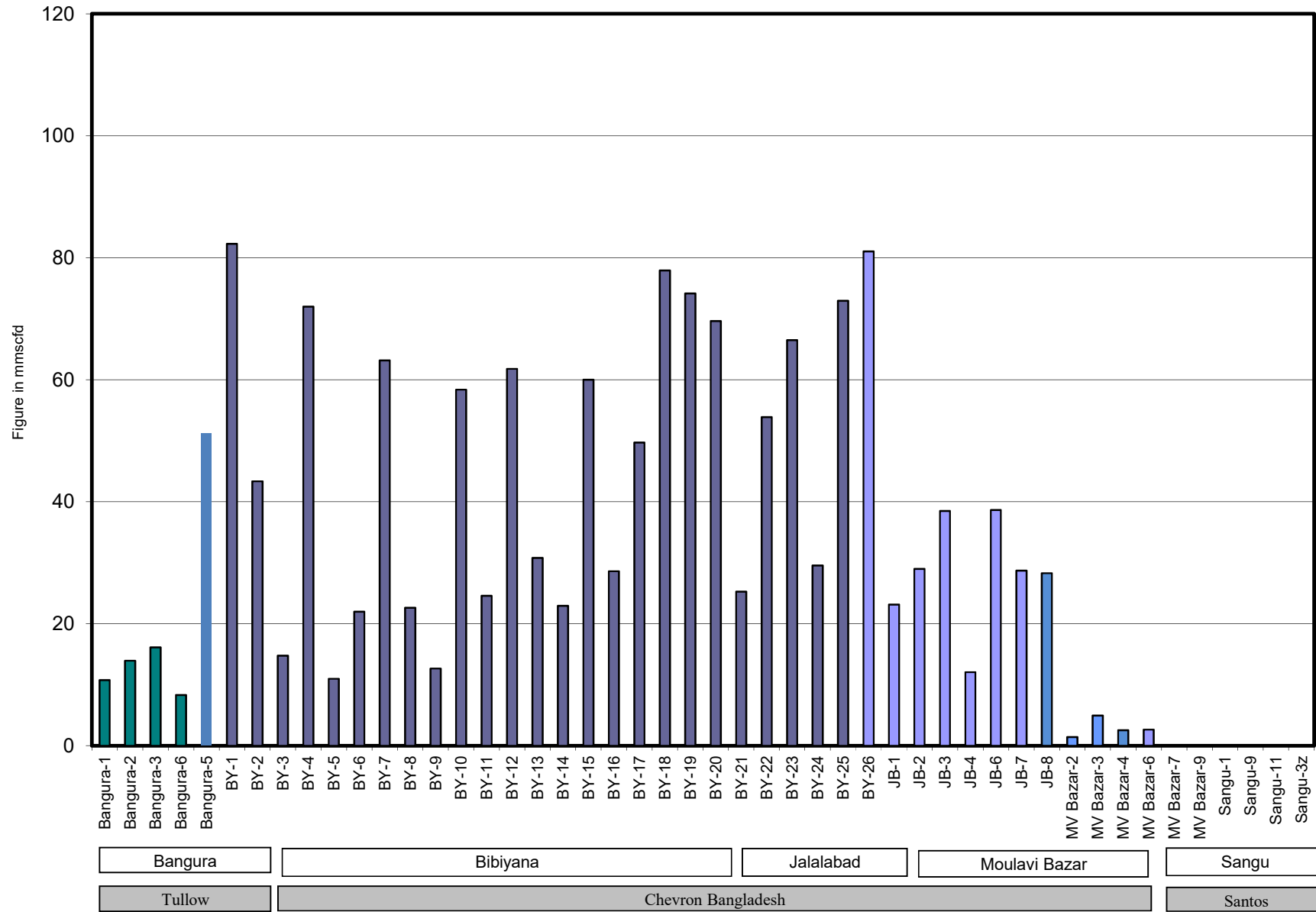


Bangladesh Gas Fields Co. Ltd. (BGFCL)

# Wellwise Daily Avg. Production- Bapex and SGFL November 2019

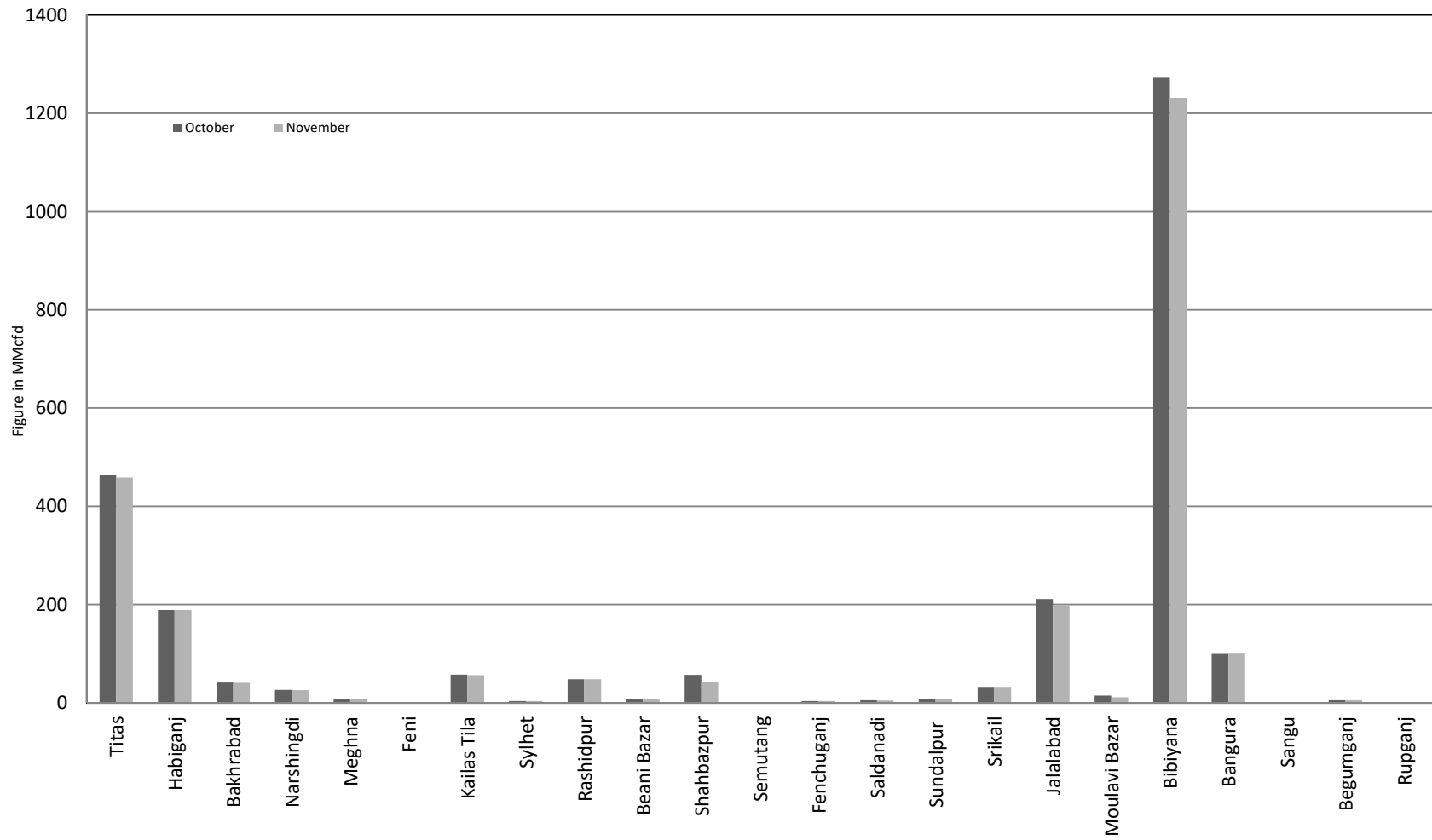


## Wellwise Daily Avg. Production- IOC and JVA Nov 2019

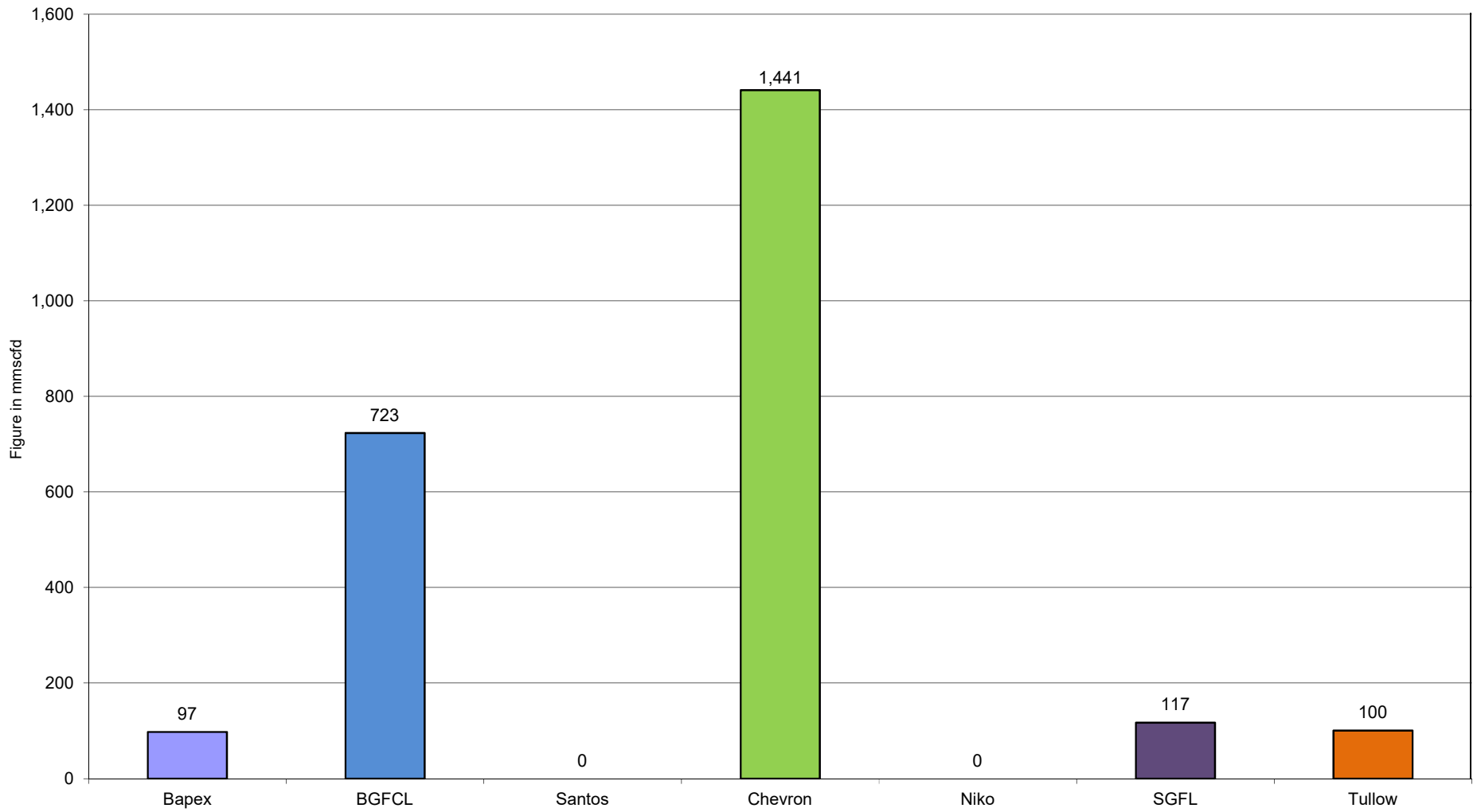




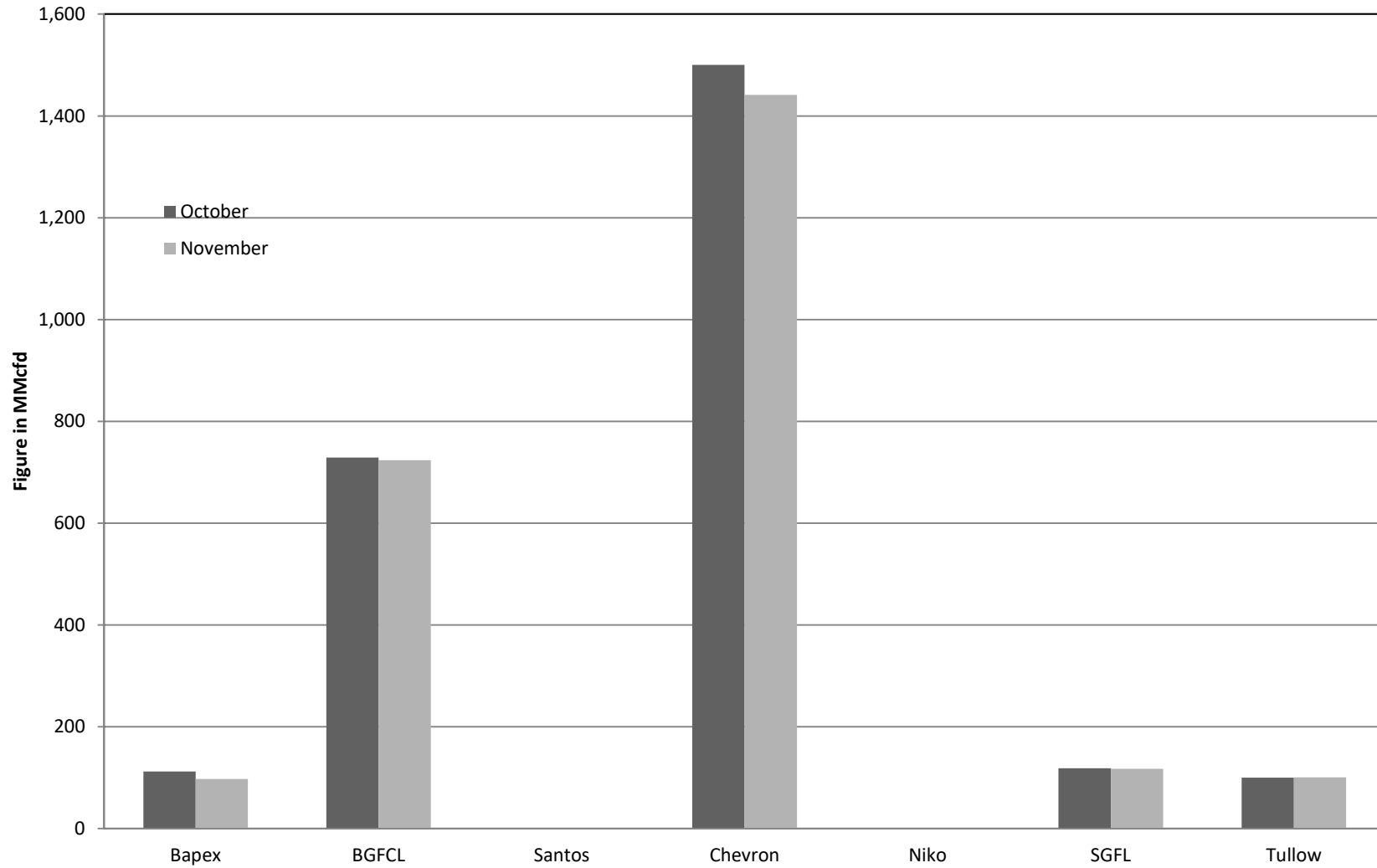
### Comparison of fieldwise daily avg. Gas production between October 2019 & November 2019



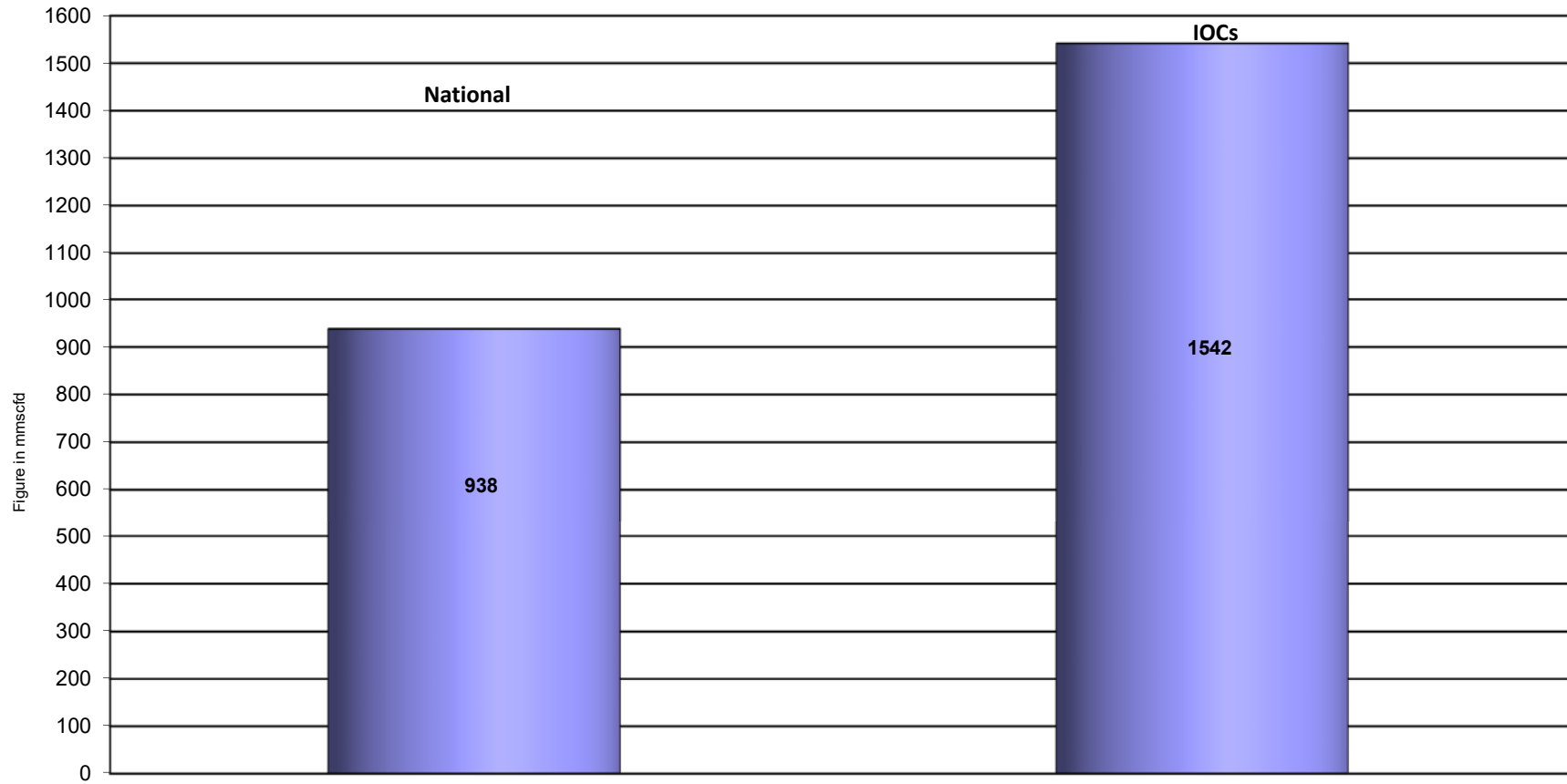
### Daily Avg. Production by Operators November 2019



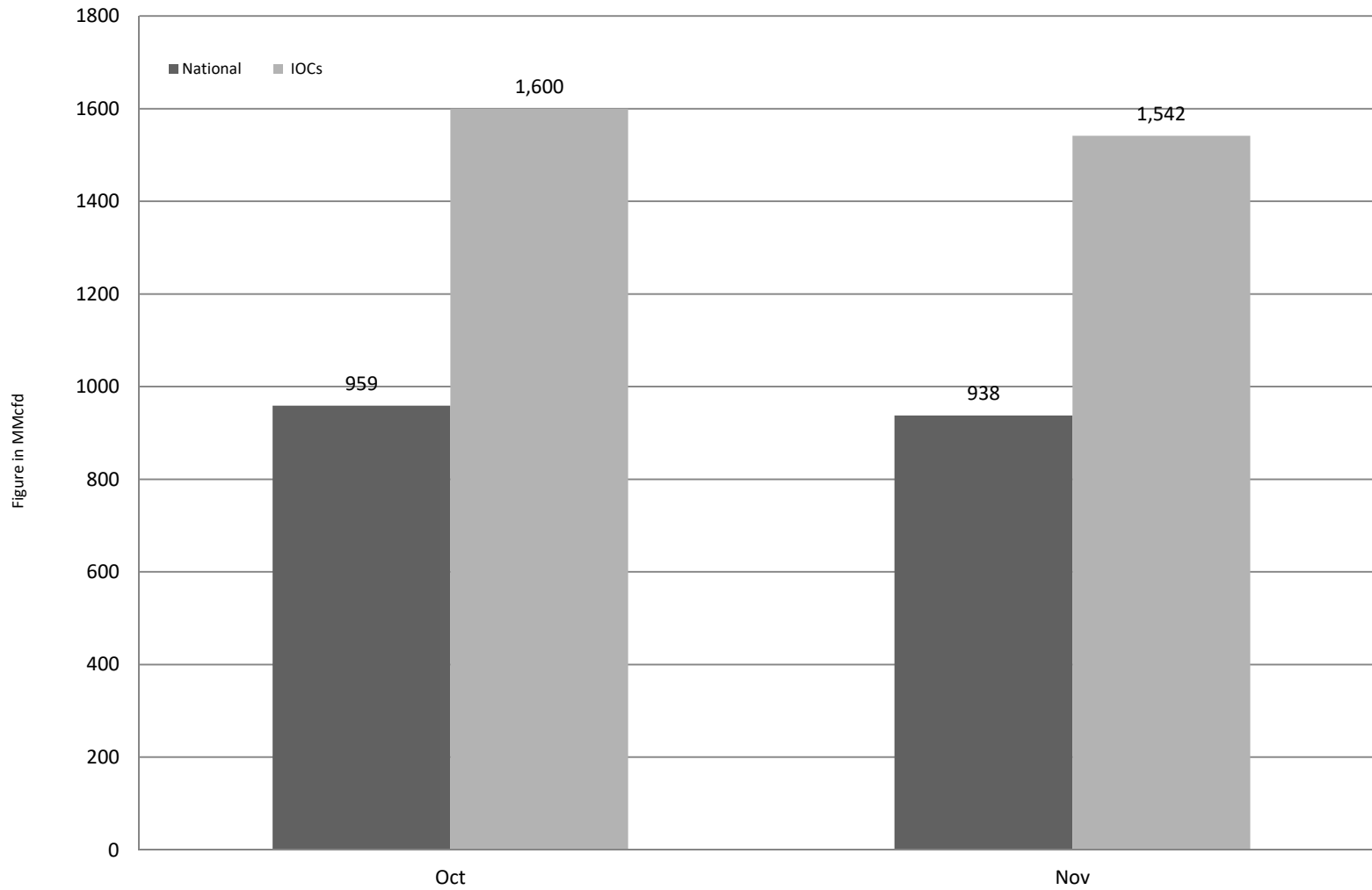
### Comparison of operatorwise daily avg. Gas production between October 2019 & November 2019



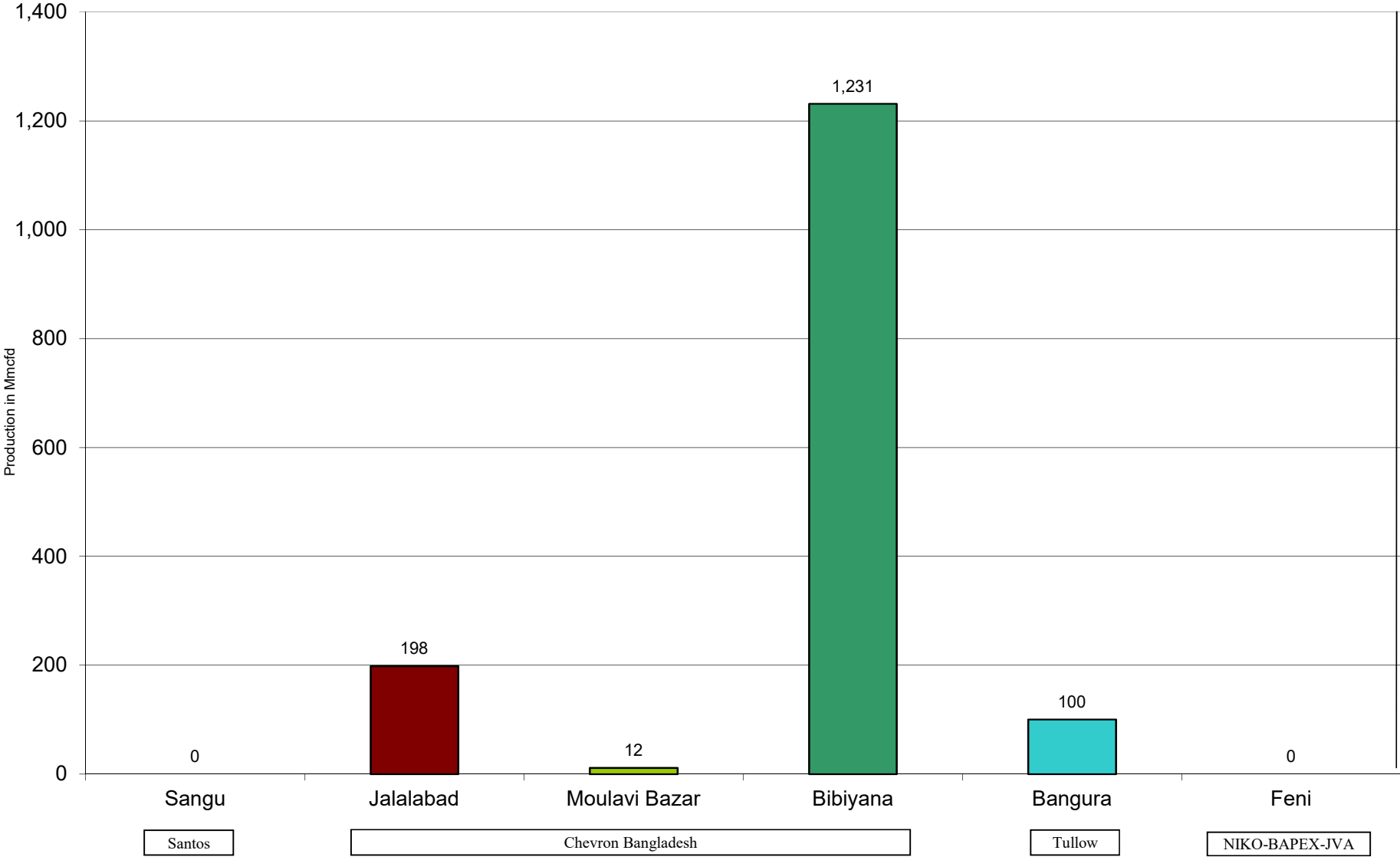
## Daily Avg. Production - National Vs. IOCs November 2019



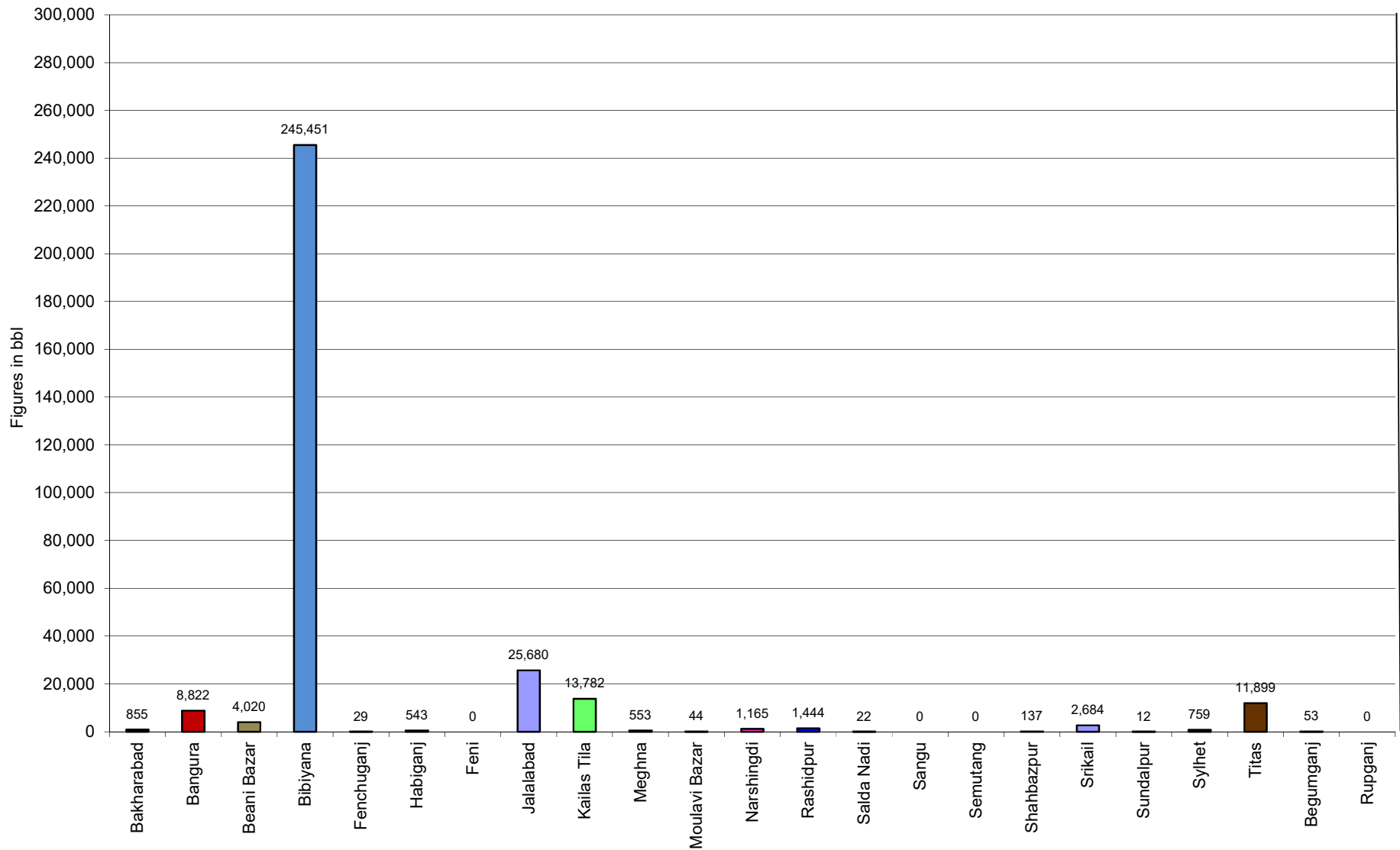
### Comparison of daily avg. Gas production - National vs IOC's between October 2019 & November 2019



### Daily Avg. Production - IOC and JVA November 2019



## Monthly Condensate Production November 2019



## Field wise Coal Reserve in Bangladesh

SI No.	Coal Basins	Proved (Mt)	Indicated (Mt)	Inferred (Mt)	Total (Mt)
1	Barapukuria	114.32	211.33	21.06+(43-64)*	346.71+(43-64)*
2	Phulbari	288	226	58	572
3	Khalashpir	-	297.57	225.92	523.49
4	Jamalganj	-	-	1053.9	1053.9
5	Dighipara	-	105	495	600
	<b>Total</b>	<b>402.32</b>	<b>839.9</b>	<b>1896.88-1917.88</b>	<b>3139.10-3160.10</b>

*\*Resources of VI Seam in second syncline are towards SW of main basin, after Wardell Armstrong*

*NOTE: Reserve Figure based on Coal Sector Development Strategy (Final), HCU, PwC*



## Summary of Reserve and Production of Barapukuria Coal Mine As of 30 November 2019

<b>Coal Initially Place (Proven + Probable)</b>	<b>346,710 kT</b>	<b>346.71 MT</b>
<b>Total Reserve of Seam VI</b>	<b>285,410 kT</b>	<b>285.41 MT</b>
<b>Recoverable from Seam VI Central part(Proven + Probable)</b>	<b>16,540 kT*</b>	<b>16.54 MT</b>
<b>Coal Production in November 2019</b>	<b>33.95 kT</b>	<b>0.03 MT</b>
<b>Cumulative Production as of November 2019</b>	<b>11,061 kT</b>	<b>11.06 MT</b>
<b>Remaining Reserve</b>	<b>5,479 kT</b>	<b>5.48 MT</b>

*NOTE: Reserve figure based on Mines and Minerals Development Report ,HCU PwC*

\*Figure from BCMCL, M/S Wardell Armstrong. According to Mines and Minerals Development Report ,HCU, PwC this figure is 64.8 Mt

## Barapukuria Coal Mine-MPM and P Contract (BCMCL)

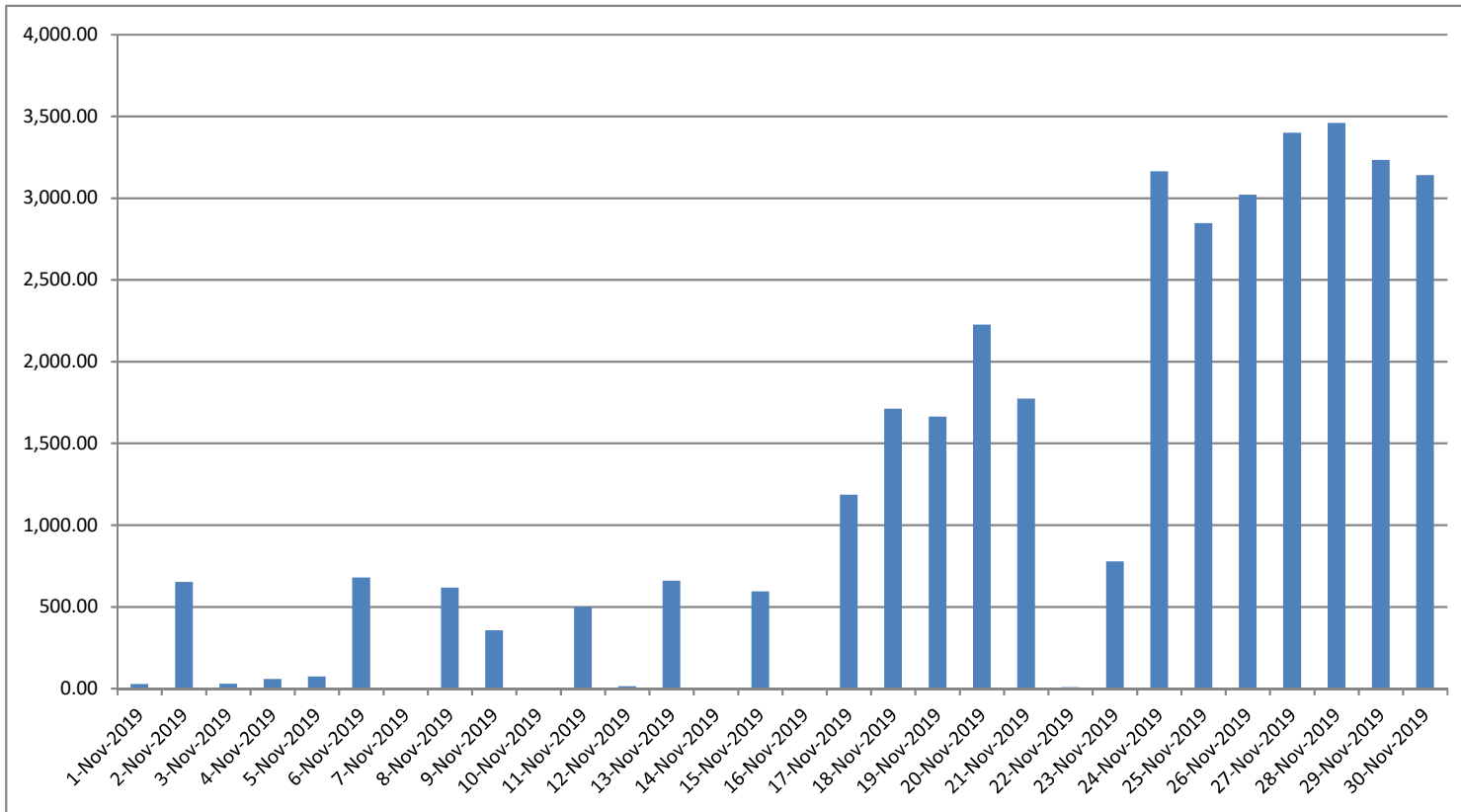
### Measurement Record: Surface Belt Weigher

Measurement Period: November 2019

Day wise data	Consortium Daily Output (ton)	Consortium Cumulative Total	BCMCL Daily Output	BCMCL Cumulative Total	Remarks
1-Nov-2019	27.25	27.25	27.25	27.25	
2-Nov-2019	652.25	679.50	652.25	679.50	
3-Nov-2019	29.25	708.75	29.25	708.75	
4-Nov-2019	57.50	766.25	57.50	766.25	
5-Nov-2019	74.00	840.25	74.00	840.25	
6-Nov-2019	678.75	1,519.00	678.75	1,519.00	
7-Nov-2019	0.25	1,519.25	0.25	1,519.25	
8-Nov-2019	616.75	2,136.00	616.75	2,136.00	
9-Nov-2019	356.75	2,492.75	356.75	2,492.75	
10-Nov-2019	0.00	2,492.75	0.00	2,492.75	
11-Nov-2019	498.25	2,991.00	498.25	2,991.00	
12-Nov-2019	13.00	3,004.00	13.00	3,004.00	
13-Nov-2019	659.75	3,663.75	659.75	3,663.75	
14-Nov-2019	0.00	3,663.75	0.00	3,663.75	
15-Nov-2019	594.25	4,258.00	594.25	4,258.00	
16-Nov-2019	0.00	4,258.00	0.00	4,258.00	
17-Nov-2019	1,186.00	5,444.00	1,186.00	5,444.00	
18-Nov-2019	1,711.50	7,155.50	1,711.50	7,155.50	
19-Nov-2019	1,663.25	8,818.75	1,663.25	8,818.75	
20-Nov-2019	2,225.50	11,044.25	2,225.50	11,044.25	
21-Nov-2019	1,773.75	12,818.00	1,773.75	12,818.00	
22-Nov-2019	8.75	12,826.75	8.75	12,826.75	
23-Nov-2019	777.25	13,604.00	777.25	13,604.00	
24-Nov-2019	3,163.50	16,767.50	3,163.50	16,767.50	
25-Nov-2019	2,847.25	19,614.75	2,847.25	19,614.75	
26-Nov-2019	3,021.00	22,635.75	3,021.00	22,635.75	
27-Nov-2019	3,399.00	26,034.75	3,399.00	26,034.75	
28-Nov-2019	3,460.00	29,494.75	3,460.00	29,494.75	
29-Nov-2019	3,234.00	32,728.75	3,234.00	32,728.75	
30-Nov-2019	3,140.50	35,869.25	3,140.50	35,869.25	

less Difference in Water Content:	1922.08
Less Out of Seam dilution:	0
Water treatment plant coal	0
<b>Output (tons) measured by Belt Weigher:</b>	<b>33,947.17</b>
Tonnes mined in DARR	0
Net Output after removing DARR	33,947.17

## Barapukuria Coal Mine Daywise Data Graph for November 2019



আসুন, যানবাহনসমূহকে অটোগ্যাসে রূপান্তর করি...

জাতীয় সম্পদ প্রাকৃতিক গ্যাস সাশ্রয় করি...

facebook

"Energy misused, cannot be excused"

আমাদের ঘরে যদি এখনো কয়েল স্টার্টার যুক্ত টিউবলাইট থেকে থাকে, আসুন আজই LED টিউবলাইট দ্বারা প্রতিস্থাপন করি।

HYDROCARBON UNIT ON FACEBOOK

“আসুন আমাদের জাতীয় সম্পদ প্রাকৃতিক গ্যাস সাশ্রয় করি”

১। **LPG** ব্যবহার করুন..

অবৈধ গ্যাস সংযোগ থেকে বিরত থাকুন

২। **CNG** নয়, অকটেন দিয়ে গাড়ি চালান...

গাড়ির ইঞ্জিনের আয়ুষ্কাল বাড়ান

চলুন আজই যানবাহনসমূহ AUTO GAS (LPG) এ রূপান্তর করি...

- \* CNG এর তুলনায় LPG কনভারশনে ৫০% কম খরচ হয়
- \* ৩-৫ মিনিটে ট্যাংকে ফুয়েল ভর্তি হয়, লম্বা লাইনে দাঁড়িয়ে অপেক্ষা করার প্রয়োজন পরে না
- \* CNG এর তুলনায় সিলিন্ডারে জায়গা, ওজন ও প্রেশার কম দরকার
- \* রক্ষণাবেক্ষণের খরচ কম
- \* পেট্রলের তুলনায় AUTO GAS -এ খরচ প্রায় ৫০% কম
- \* গ্যাসোলিন ও ডিজেলের তুলনায় নিঃসরণ কম

# Hydrocarbon Unit

Energy & Mineral Resources Division  
Ministry of Power, Energy & Mineral Resources  
153, Pioneer Road  
Segunbagicha, Dhaka-1000  
www.hcurogbd