

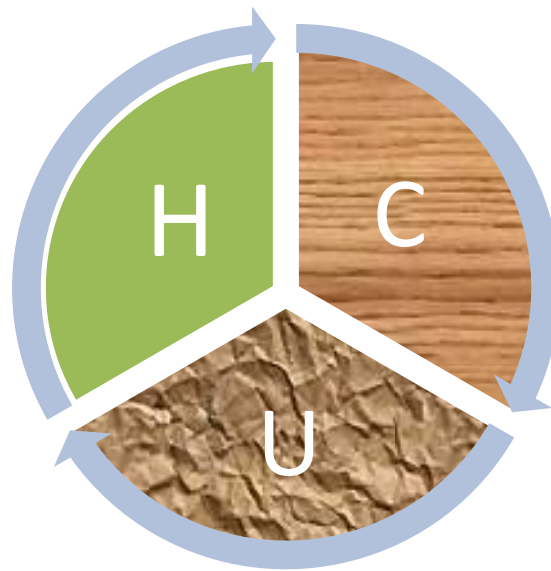


HYDROCARBON UNIT

Energy and Mineral Resources Division

Gas and Coal Reserve & Production

November 2020



Gas Reserve & Production at a glance

Gas Initially in Place (GIIP)	:	40,092.19 Bcf
Recoverable (2P)	:	30,055.40 Bcf
Cumulative Production as of November 2020	:	18,166.03 Bcf
Remaining Reserve up to November 2020	:	11,889.37 Bcf
Gas Production in November 2020	:	74.61 Bcf
National Oil Company (NOC's) production in November 2020	:	24.98 Bcf
International Oil Company (IOC's) production in November 2020	:	49.63 Bcf
No. of National Oil Company (NOC's) in November 2020	:	3 (BGFCL, BAPEX, SGFL)
No. of International Oil Company (IOC's) in November 2020	:	2 (Chevron, Tullow)
Total gas fields of National Oil Company (NOC) in November 2020	:	21
Total gas fields of International Oil Company (IOC) in November 2020	:	5
Total gas wells of National Oil Company (NOC) in November 2020	:	115
Total gas wells of International Oil Company (IOC) in November 2020	:	60
No. of National Oil Company (NOC's) gas production well in November 2020	:	70
No. of Intl. Oil Company (IOC's) gas production well in November 2020	:	42
No. of National Oil company (NOC's) suspended well in November 2020	:	45
No. of International Oil company (IOC's) suspended well in November 2020	:	18
Total LNG Import in November 2020	:	16.19 Bcf
Total LNG Import from July 2020 to November 2020	:	89.82 Bcf
Cumulative LNG Import from August 2018	:	408.59 Bcf

Executive Summary of November 2020

Total gas and condensate Production in November 2020 were 74.61 Bcf and 304652.15 Bbl. In the previous month i.e. October 2020, gas and condensate production were 75.96 Bcf and 307541 Bbl and in the same month of the previous year i.e. November 2019, total gas and condensate production were 74.38 Bcf and 317954 Bbl respectively. The National Oil Companies (NOC's) and International Oil Companies (IOC's) Produced 24.98 Bcf and 49.63 Bcf gas respectively in November 2020. During the previous month i.e. October 2020, gas production by the National Oil Companies (NOC's) and International Oil Companies (IOC's) were 25.94 Bcf and 50.02 Bcf respectively. In the month of November 2020, Bibiyana gas field Produced 39.91 Bcf gas and it ranked top among the gas producers. Average production from the field during the month of November 2020 was 1330 Mmcf. It is noted that Bibiyana gas field Produced 39.98 Bcf in October 2020.

During the month of November 2020 total production of condensate was 304652.15 Bbl compared to 307541 Bbl in the previous month i.e. October 2020. Bibiyana gas field Produced 231022 Bbl condensate and ranked top while Jalalabad ranked 2nd by producing 31705 Bbl.

In the month of November 2020 total coal production was 51073.02 Ton. In the previous month i.e. October 2020 total coal production was 57969.30 Ton. It indicates that 6896.28 Ton less Coal was produced compared to previous month.

Total LNG import in November 2020 was 16.19 Bcf. As a result, Total LNG Import in this FY is 89.82 Bcf and cumulative LNG import stands on 408.59 Bcf from August 2018.

Table of Contents

Gas Report	Page No.
Summary	1
summary of Reserve and Production	2
Production comparison between October 2020 & November 2020	3
Production per well & production reserve ratio	4
Monthly Production by Fields & Wells up to November 2020	5-12
Monthly Condensate Production by Fields up to November 2020	13-14
Monthly Water Production by Fields from November 2020	15-16
Conditions of Field and Well up to November 2020	17-21
Chart	
Well-wise Production of All fields in 2018-19	22
Reserve, Production and Remaining Reserve as of November 2020	23
Daily Average Gas Production from January 2013 to November 2020	24
Field wise Daily Average Production as of November 2020	25
Well wise Daily Average Production-BGFCL as of November 2020	26
Well wise Daily Average Production-BAPEX and SGFL, November 2020	27
Well wise Daily Average Production-IOC and JVA, November 2020	28
Comparison of Field wise Avg Gas Production between October 20 & November 20	29
Daily Average Production by Operator, November 2020	30
Comparison of Operator wise daily avg Production between October 20 & November 20	31
Daily Average Production – National vs IOC’s, November 2020	32
Daily avg Gas Production- National vs IOC’s between October 20 & November 20	33
Daily Average Production IOC’s and JVA, November 2020	34
Monthly Condensate Production, November 2020	35
Coal Report	
Summary	36-37
Barapukuria Coal Mine-MPM and P Contract (BCMCL)	38
Barapukuria Coal Mine Day wise Data Graph for November 2020	39

Summary of Reserve, Production & Import As of November 2020

Gas Initially Place (Proven + Probable)	40,092.19 Bcf	40.09 Tcf
Recoverable (Proven + Probable)	30,055.40 Bcf	30.06 Tcf
Gas Production in November 2020	74.61 Bcf	0.07 Tcf
Cumulative Gas Production as of November 2020	18,166.03 Bcf	18.17 Tcf
Remaining Reserve	11,889.37 Bcf	11.89 Tcf

NOTE: Reserve figure based on "Updated Report on Bangladesh Gas Reserve Estimation 2010", prepared by Gustavson Associates LLC, USA

Total LNG Import in November 2020	16.19 Bcf	0.02 Tcf
Total LNG Import from July 2020 to November 2020	89.82 Bcf	0.09 Tcf
Cumulative LNG Import from August 2018	408.59 Bcf	0.41 Tcf

Summary of Reserve and Production

(As of November 2020)

Gas Bcf



SI No.	Field	2P	GIIP	2P Reserve	Gas Prod. In Nov '20	Cum. Gas Production	Remaining Reserve	Cum. Condensate Production
1	Begumganj		47.0	33.0	0.17	5.4	27.6	1
2	Shahbazpur		415.0	261.0	0.88	65.8	195.2	10
3	Semutang		654.0	318.0	0.03	13.6	304.4	5
4	Fenchuganj		483.0	329.0	0.15	161.7	167.3	116
5	Salda Nadi		393.0	275.0	0.11	94.6	180.4	59
6	Srikail*		230.0	161.0	0.80	102.6	58.4	178
7	Sundalpur *		62.2	50.2	0.22	17.0	33.2	1
8	Rupganj		48.0	33.6	0.00	0.7	32.9	1
Bapex			2,332.2	1,460.8	2.35	461.4	999.4	371
9	Meghna		122.0	101.0	0.23	75.2	25.8	121
10	Narshingdi		405.0	345.0	0.82	218.1	126.9	445
11	Kamta		72.0	50.0	0.00	21.1	28.9	4
12	Habiganj		3,981.0	2,787.0	5.45	2,562.2	224.8	142
13	Bakhrabad		1,825.0	1,387.0	1.18	839.0	548.0	1,045
14	Titas		9,039.0	7,582.0	12.16	4,955.8	2,626.2	5,474
BGFCL			15,444.0	12,252.0	19.84	8,671.5	3,580.5	7,229
15	Sangu		976.0	771.0	0.00	489.5	281.5	37
Santos/Cairn			976.0	771.0	0.00	489.5	281.5	37
16	Bibiyana**		8,383.0	4,532.0	39.91	4,465.1	66.9	26,799
17	Moulavi Bazar**		494.0	494.0	0.62	333.3	160.7	119
18	Jalalabad**		2,716.0	2,716.0	6.30	1,421.8	1,294.2	10,792
Chevron			11,593.0	7,742.0	46.83	6,220.2	1,521.8	37,710
19	Feni		185.0	130.0	0.00	63.0	67.0	110
Niko			185.0	129.6	0.00	63.0	66.6	110
20	Kailas Tila		3,463.0	2,880.0	1.27	765.1	2,114.9	8,126
21	Sylhet		580.0	408.0	0.11	216.9	191.1	814
22	Rashidpur		3,887.0	3,134.0	1.17	661.2	2,472.8	806
23	Chattak		677.0	474.0	0.00	25.8	448.2	4
24	Beani Bazar		225.0	137.0	0.24	101.0	36.0	1,660
SGFL			8,832.0	7,033.0	2.79	1,770.1	5,262.9	11,409
25	Bangura		730.0	621.0	2.79	490.3	130.7	1,257
Tullow			730.0	621.0	2.79	490.3	130.7	1,257
26	Kutubdia		65.0	46.0	0.00	0.0	46.0	0
Total			40,092.2	30,055.4	74.61	18,166.0	11,889.4	58,123

* Preliminary reserve estimated by BAPEX

** 2P reserve estimation by Petrobangla has crossed the limit. So 2P reserve is estimated as GIIP reserve now.

Production comparison between Oct'20 & Nov'20



SI No.	Field	Gas Prod. (MMcf) in Oct'20	Daily Avg. (MMcfd) in Oct'20	Gas Prod. (MMcf) in Nov'20	Daily Avg. (MMcfd) in Nov'20
1	Begumganj	177	6	171	6
2	Shahbazpur	965	31	883	29
3	Semutang	20	1	26	1
4	Fenchuganj	135	4	148	5
5	Salda Nadi	109	4	106	4
6	Srikail	676	22	802	27
7	Sundalpur	224	7	215	7
8	Rupganj	0	0	0	0
Bapex		2306	74	2351	78
9	Meghna	256	8	235	8
10	Narshingdi	835	27	819	27
11	Kamta	0	0	0	0
12	Habiganj	5695	184	5448	182
13	Bakhrabad	1243	40	1176	39
14	Titas	12484	403	12159	405
BGFCL		20514	662	19836	661
15	Sangu	0	0	0	0
Santos/Cairn		0	0	0	0
16	Bibiyana	39977	1290	39914	1330
17	Moulavi Bazar	603	19	618	21
18	Jalalabad	6501	210	6302	210
Chevron		47081	1519	46835	1561
19	Feni	0	0	0	0
Niko		0	0	0	0
20	Kailas Tila	1325	43	1274	42
21	Sylhet	117	4	113	4
22	Rashidpur	1459	47	1169	39
23	Chattak	0	0	0	0
24	Beani Bazar	223	7	237	8
SGFL		3124	101	2793	93
25	Bangura	2940	95	2793	93
Tullow		2940	95	2793	93
26	Kutubdia	0	0	0	0
Total		75964	2450	74608	2487

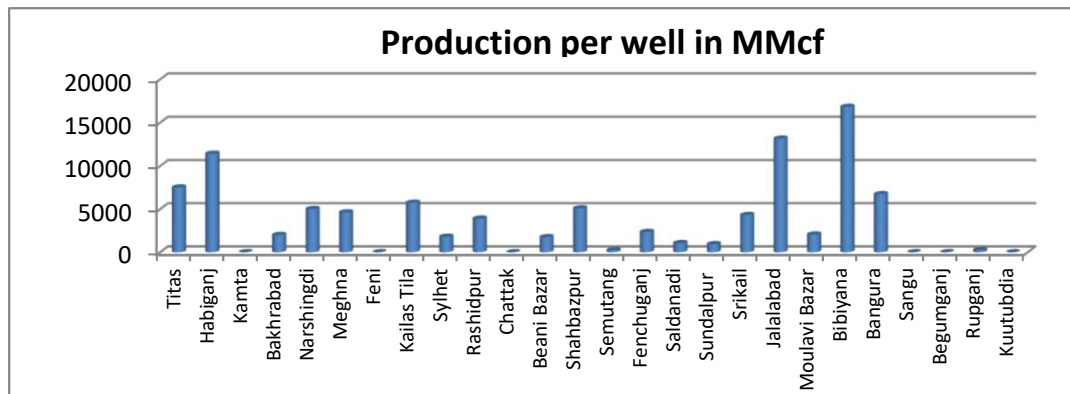
Production per well & production reserve ratio



HYDROCARBON UNIT

Energy & Mineral Resources Division

	No of production well	Total 2p- Recoverable	2019-20 production	production per well mmcf	production reserve ratio
Titas	26	7582	153.5	5903.85	0.020
Habiganj	8	2787	67.89	8486.25	0.024
Kamta	0	50	0	0.00	0.000
Bakhrabad	7	1387	15.02	2145.71	0.011
Narshingdi	2	345	9.09	4545.00	0.026
Meghna	1	101	3.1	3100.00	0.031
Feni	0	130	0	0.00	0.000
Kailas Tila	4	2880	20.19	5047.50	0.007
Sylhet	1	408	1.36	1360.00	0.003
Rashidpur	5	3134	17.53	3506.00	0.006
Chattak	0	474	0	0.00	0.000
Beani Bazar	1	137	3.06	3060.00	0.022
Shahbazpur	4	261	16.8	4200.00	0.064
Semutang	2	318	0.32	160.00	0.001
Fenchuganj	2	329	1.42	710.00	0.004
Saldanadi	2	275	2.17	1085.00	0.008
Sundalpur	1	50.2	2.6	2600.00	0.052
Srikail	3	161	11.19	3730.00	0.070
Jalalabad	7	2716	73.11	10444.29	0.027
Moulavi Bazar	4	494	5.33	1332.50	0.011
Bibiyana	26	4532	447.87	17225.77	0.099
Bangura	5	621	33.45	6690.00	0.054
Sangu	0	771	0	0.00	0.000
Begumganj	1	33	1.94	0.00	0.059
Rupganj	0	33.6	0	0.00	0.000
Kuutubdia	0	46	0	0.00	0.000
Total	112	30055.8	886.94	7919.11	0.030



Monthly Production by Field and Well upto November- 2020



HYDROCARBON UNIT

Energy & Mineral Resources Division

Figures in mmscf

Well	Jan	Feb	Mar	Apr	May	Jun	Jul	Aug	Sep	Oct	Nov	Dec	Total	Cumulative	2019	2018	2017
Field : Bakharabad																	
BKB-1	432	401	427	342	420	414	416	398	412	428	397		4,486	148,947	3,295	0	0
BKB-2	27	13	23	0	0	0	0	0	0	0	0		63	87,012	378	445	543
BKB-3	143	139	144	150	159	158	165	166	158	162	157		1,702	164,305	1,757	1,989	2,249
BKB-4	0	0	0	0	0	0	0	0	0	0	0		0	55,872	0		
BKB-5	146	137	146	133	148	142	146	141	143	144	137		1,561	62,129	1,757	1,822	1,847
BKB-6	0	0	0	0	0	0	0	0	0	0	0		0	50,069	0	0	
BKB-7	0	0	0	0	0	0	0	0	0	0	0		0	107,750	0	0	0
BKB-8	238	228	234	246	253	251	261	257	251	253	247		2,717	131,542	2,565	2,017	3,462
BKB-9	208	194	201	187	185	176	177	178	167	171	158		2,001	25,708	2,585	3,332	3,637
BKB-10	91	88	90	85	85	83	84	84	81	84	80		936	5,702	1,092	1,297	1,453
Field Total:	1,285	1,200	1,263	1,142	1,250	1,223	1249	1,223	1,211	1,243	1,176	0	13,465	839,036	13,429	10,903	13,190
Daily Avg.(mmscfd)	41	41	41	38	40	41	40	39	40	40	39	0	40		37	30	36
Field : Bangura																	
Bangura-1	331	306	281	22	284	319	340	356	361	368	340		3,308	96,700	4,138	4,615	4,914
Bangura-2	431	398	335	0	298	415	417	405	421	430	399		3,947	88,798	5,312	6,802	7,837
Bangura-3	517	478	373	0	317	498	487	398	466	476	468		4,479	107,401	6,195	7,265	8,662
Bangura-6	295	268	169	0	182	286	261	191	224	229	225		2,329	14,794	3,518	4,847	4,100
Bangura-5	1,584	1,475	1,570	996	1,304	1,492	1521	1,512	1,440	1,437	1,360		15,690	182,610	16,177	8,410	9,699
Field Total:	3,158	2,924	2,728	1,019	2,384	3,009	3027	2,862	2,912	2,940	2,793	0	29,755	490,303	35,340	31,940	35,212
Daily Avg.(mmscfd)	102	101	88	34	77	100	98	92	97	95	93	0	89		97	88	96
Field : Beani Bazar																	
BB-1	0	0	0	0	0	0	0	0	0	0	0	0	0	35,481	0	0	1,023
BB-2	251	244	254	245	251	243	251	252	243	223	237		2,694	65,566	3,135	3,276	3,282
Field Total:	251	244	254	245	251	243	251	252	243	223	237	0	2,694	101,046	3,135	3,276	4,306
Daily Avg.(mmscfd)	8	8	8	8	8	8	8	8	8	7	8	0	8		9	9	12
Field : Bibiyana																	
BY-1	3,116	2,351	2,124	1342	1,888	2,454	2309	2,127	2,209	2,145	2070		24,133	421,473	29,455	21,743	35,595
BY-2	1,633	1,245	1,219	585	775	1,203	1107	950	1,070	1,009	956		11,753	303,641	17,462	21,388	23,957
BY-3	973	1,026	897	934	1,737	1,417	370	1,742	1,688	1,688	1278		13,751	253,581	4,562	6,249	9,904
BY-4	2,693	1,966	2,002	1181	2,048	2,052	1902	1,691	1,821	1,771	1722		20,850	226,180	24,793	28,559	6,571
BY-5	35	471	474	64	59	527	681	513	700	570	631		4,725	182,860	6,168	6,131	8,117
BY-6	781	672	786	210	608	737	558	468	810	709	570		6,907	237,543	9,140	11,057	11,879
BY-7	2,530	1,866	1,736	1256	2,092	1,986	1860	1,692	1,791	1,713	1633		20,155	291,320	26,581	23,155	32,874
BY-8	192	700	730	516	54	502	822	769	804	1,342	1626		8,057	150,838	8,538	8,921	12,486
BY-9	43	384	346	222	15	292	492	465	531	1,358	1612		5,760	135,542	5,164	4,093	6,247

Monthly Production by Field and Well upto November- 2020



HYDROCARBON UNIT
Energy & Mineral Resources Division

Figures in mmscf

Well	Jan	Feb	Mar	Apr	May	Jun	Jul	Aug	Sep	Oct	Nov	Dec	Total	Cumulative	2019	2018	2017
BY-10	130	1,839	1,841	1068	123	1,264	1880	1,680	1,759	1,716	1642		14,943	372,937	22,997	30,954	32,967
BY-11	149	2,068	1,878	1090	374	1,506	2087	1,921	1,972	2,070	1989		17,102	146,047	8,983	12,147	6,813
BY-12	134	1,797	1,921	1289	418	1,407	1909	1,723	1,820	1,768	1702		15,888	162,991	24,399	6,835	8,284
BY-13	1,058	1,685	1,587	1609	1,953	2,036	2003	1,773	1,756	2,123	2104		19,686	103,430	10,785	13,171	11,842
BY-14	869	629	635	756	892	759	790	739	794	740	761		8,365	107,969	8,991	11,523	15,354
BY-15	2,110	1,566	1,575	1253	1,972	1,972	2227	1,998	1,461	1,447	1394		18,975	137,820	21,925	24,295	19,111
BY-16	994	726	782	879	905	794	816	746	767	1,217	1792		10,417	81,735	10,246	9,264	12,541
BY-17	1,782	1,309	1,429	1429	1,702	1,490	1485	1,248	1,306	1,279	1290		15,749	112,224	18,604	17,603	15,412
BY-18	2,743	1,895	2,266	2328	2,311	2,282	2260	2,031	2,097	2,039	1962		24,214	172,025	30,009	31,890	29,509
BY-19	2,536	2,006	1,725	1298	2,529	2,130	2115	1,867	1,972	1,915	1849		21,941	81,226	27,207	8,144	9,859
BY-20	2,388	1,846	1,952	1171	1,904	1,994	1953	1,728	1,836	1,741	1693		20,207	80,751	22,699	7,840	6,533
BY-21	2,260	1,692	1,652	810	1,878	1,789	1771	1,561	1,648	1,639	1920		18,622	62,423	8,577	9,670	13,246
BY-22	1,889	1,391	1,507	693	1,592	1,473	1455	1,270	1,421	1,378	1317		15,387	142,679	19,492	24,755	27,093
BY-23	2,487	1,833	1,860	1213	2,162	1,873	1998	1,502	1,851	1,760	1728		20,266	97,631	25,318	32,043	15,333
BY-24	1,042	766	837	929	991	880	878	794	815	795	776		9,503	77,935	10,269	13,268	13,484
BY-25	2,581	1,856	2,045	182	2,047	2,159	2134	1,887	1,979	1,928	1865		20,663	152,640	26,797	28,306	30,331
BY-26	2,896	2,018	2,352	1832	2,545	2,353	2337	1,958	2,173	2,118	2032		24,614	169,607	29,429	33,853	30,446
Field Total:	40045	37602	38162	26138	35571	39333	40198	36842	38852	39977	39914	0	412,634	4,465,051	458,589	446,855	445,787
Daily Avg.(mmscfd)	1292	1,297	1231	871	1147	1311	1297	1,188	1,295	1,290	1,330	0	1,232		1,256	1,224	1,221
Field :	Chattak																
Ch-1	Production Suspended													25,834			
Field Total:	0			0	0	0	0	0	0	0	0	0	25,834				
Daily Avg.(mmscfd)	0			0	0			0	0	0			0	0			
Field :	Fenchuganj																
Fenchuganj-2	0	0	0	0	0	0		0	0	0	0	0	0	38,169	0	0	0
Fenchuganj-3	101	102	101	100	103	119	152	174	156	135	148		1,391	93,906	1,877	3,186	6,192
Fenchuganj-4	3	0	0	0	0	0	0	0	0	0	0		3	29,582	305	809	441
Field Total:	105	102	101	100	103	119	152	174	156	135	148	0	1,394	161,656	2,182	3,994	6,633
Daily Avg.(mmscfd)	3	4	3	3	3	4	5	6	5	4	5	0	4		6	11	18
Field :	Feni																
Feni-1	Production Suspended								0	0	0	34,214					
Feni-2	Production Suspended								0	0	0	6,119					
Feni-3	Production Suspended								0	0	0	2,176					

Monthly Production by Field and Well upto November- 2020



HYDROCARBON UNIT
Energy & Mineral Resources Division

Figures in mmscf

Well	Jan	Feb	Mar	Apr	May	Jun	Jul	Aug	Sep	Oct	Nov	Dec	Total	Cumulative	2019	2018	2017
Feni-4	Production Suspended								0	0				14,386			
Feni-5	Production Suspended								0	0				6,127			
Field Total:													63,023				
Daily Avg.(mmscfd)																	
Field :	Habiganj																
Hbj-1	301	292	311	299	313	305	314	310	301	310	300		3,355	285,587	4,124	2,207	0
Hbj-2	0	0	0	0	0	0	0	0	0	0	0		0	275,704	0	0	0
Hbj-3	870	813	848	724	853	842	870	868	842	836	779		9,145	397,248	10,947	13,155	13,151
Hbj-4	870	813	848	724	853	842	870	868	842	836	779		9,145	391,706	10,947	13,155	13,151
Hbj-5	752	725	750	604	749	749	767	714	692	714	689		7,905	314,556	8,977	9,497	9,497
Hbj-6	451	432	446	366	419	438	454	465	451	466	450		4,838	172,396	5,349	5,487	5,491
Hbj-7	1,185	1,108	1,142	948	1,158	1,124	1,177	1,166	1,133	1,174	1,149		12,463	279,854	14,272	14,533	14,565
Hbj-8	0	0	0	0	0	0	0	0	0	0	0		0	11,023	0	0	0
Hbj-9	0	0	0	0	0	0	0	0	0	0	0		0	52,652	0	0	0
Hbj-10	852	815	841.5	698	819.1	826	865	859	815	865	837		9,093	272,649	10,423	13,928	14,058
Hbj-11	549	524	540	448.2	525	515	542.5	548	482	494	464		5,632	108,861	6,920	9,579	10,398
Field Total:	5,830	5,521	5,727	4,811	5,689	5,641	5,859	5,799	5,556	5,695	5,448	0	61,575	2,562,235	71,959	81,540	80,313
Daily Avg.(mmscfd)	188	190	185	160	184	188	189	187	185	184	182	0	184		197	223	220
Field :	Jalalabad																
JB-1	795	710	696	432	764	856	806	795	829	874	814		8,371	263,330	9,191	10,469	9,142
JB-2	987	881	864	637	945	1,069	1006	964	1,034	1,029	1,181		10,595	301,590	11,400	12,973	14,517
JB-3	1,315	1,174	1,152	906	1,138	1,369	1327	1,301	1,358	1,409	1,308		13,757	369,545	15,263	17,399	19,162
JB-4	658	584	576	446	665	609	544	586	620	684	653		6,624	290,390	4,766	5,821	7,045
JB-6	1,315	1,174	1,059	477	1,128	1,403	1351	1,396	1,383	1,401	1,328		13,416	87,762	15,021	17,364	19,524
JB-7	978	881	683	129	13	0	0	2	6	2	4		2,697	43,483	11,396	13,053	10,324
JB-8	1,063	949	867	299	994	1,102	1059	1,013	1,083	1,103	1,015		10,547	65,705	11,228	12,793	14,513
Field Total:	7,111	6,352	5,896	3,325	5,648	6,407	6,095	6,058	6,312	6,501	6,302	0	66,007	1,421,805	78,265	89,872	94,226
Daily Avg.(mmscfd)	229	219	190	111	182	214	197	195	210	210	210	0	197		214	246	258
Field :	Kailas Tila																
KTL-1	0	0	0	0	0	0	0	0	0	0	0		0	205,181	371	462	0

Monthly Production by Field and Well upto November- 2020



HYDROCARBON UNIT

Energy & Mineral Resources Division

Figures in mmscf

Well	Jan	Feb	Mar	Apr	May	Jun	Jul	Aug	Sep	Oct	Nov	Dec	Total	Cumulative	2019	2018	2017
KTL-2	587	555	608	591	615	592	601	593	441	374	361		5,919	191,232	7,166	7,190	7,242
KTL-3	134	101	34	0	0	0	0	0	0	0	0		269	140,672	2,583	2,947	3,255
KTL-4	189	178	189	181	183	177	182	179	169	174	167		1,969	100,703	2,639	3,336	3,680
KTL-5	0	0	0	0	0	0	0	0	0	0	0		0	17,923	0	0	0
KTL-6	781	744	798	768	799	764	783	783	748	777	746		8,492	108,622	9,042	8,950	9,086
KTL-7	0	0	0	0	0	0	0	0	0	0	0		0	816	0	0	0
Field Total:	1,691	1,578	1,630	1,540	1,598	1,533	1,566	1,555	1,359	1,325	1,274	0	16,649	765,148	21,801	22,886	23,263
Daily Avg.(mmscfd)	55	54	53	51	52	51	51	50	45	43	42	0	50		60	63	64
Field : Kamta																	
Kamta-1	Production Suspended													21,139			
Field Total:	0													21,139			
Daily Avg.(mmscfd)																	
Field : Meghna																	
M-1	257	250	262	251	246	241	248	243	236	256	235		2,725	75,156	3,458	4,538	4,625
Field Total:	257	250	262	251	246	241	248	243	236	256	235	0	2,725	75,156	3,458	4,538	4,625
Daily Avg.(mmscfd)	8	9	8	8	8	8	8	8	8	8	8	0	8		9	12	13
Field : Moulavi Bazar																	
MV Bazar-2	125	115	85	0	59	166	164	115	118	94	90		1,131	55,939	770	2,302	2,866
MV Bazar-3	426	357	256	0	137	413	386	375	450	360	354		3,515	163,346	2,022	3,712	4,705
MV Bazar-4	36	0	0	0	0	0	0	0	7	93	78		212	59,327	1,047	3,103	3,945
MV Bazar-5	0	0	0	0	0	0	0	0	0	0	0		66				
MV Bazar-6	20	103	98	0	28	7	10	0	-3	56	96		416	18,651	1,886	1,734	1,676
MV Bazar-7	0	0	0	0	0	0	0	0	0	0	0		0	5,648	4	21	152
MV Bazar-9	0	0	0	0	0	0	0	0	0	0	0		0	30,337	1	1	0
Field Total:	607	575	439	0	224	587	560	490	572	603	618	0	5,275	333,313	5,730	10,872	13,345
Daily Avg.(mmscfd)	20	20	14	0	7	20	18	16	19	19	21	0	16		16	30	37
Field : Narshingdi																	
N-1	504	482	495	419	503	501	518	524	487	513	502		5,447	155,705	5,663	6,181	6,279
N-2	323	308	308	193	313	311	322	311	309	322	317		3,337	62,439	3,732	3,705	3,962
Field Total:	828	790	803	612	816	812	839	835	796	835	819	0	8,784	218,144	9,395	9,886	10,241

Monthly Production by Field and Well upto November- 2020



HYDROCARBON UNIT
Energy & Mineral Resources Division

Figures in mmscf

Well	Jan	Feb	Mar	Apr	May	Jun	Jul	Aug	Sep	Oct	Nov	Dec	Total	Cumulative	2019	2018	2017
Daily Avg.(mmscfd)	27	27	26	20	26	27	27	27	27	27	27	0	26		26	27	28
Field : Rashidpur																	
RP-1	531	510	546	524	544	528	544	532	535	561	538		5,892	179,259	6,305	6,505	6,625
RP-2	0	0	0	0	0	0	0	0	0	0	0		0	82,474	0		
RP-3	284	265	283	273	282	274	283	283	273	282	35		2,816	137,467	3,443	3,541	3,730
RP-4	241	224	235	220	223	212	222	219	209	219	212		2,435	133,216	2,886	3,227	3,516
RP-5	0	0	0	0	0	0	0	0	0	0	0		0	25,647	0		
RP-6	0	0	0	0	0	0	0	0	0	0	0		0	9,983	0	0	0
RP-7	145	134	141	134	136	131	138	137	124	136	133		1,489	67,600	1,786	2,096	2,225
RP-8	283	264	279	271	279	271	282	278	249	262	252		2,968	25,516	3,515	3,696	3,977
Field Total:	1,483	1,397	1,484	1,422	1,464	1,414	1,470	1,448	1,389	1,459	1,169	0	15,599	661,163	17,936	19,065	20,074
Daily Avg.(mmscfd)	48	48	48	47	47	47	47	47	46	47	39	0	47		49	52	55
Field : Salda Nadi																	
Salda-1	0	0	0	0	0	0	0	0	0	0	0	0	0	36,904	0	0	0
Salda-2	0	0	0	0	0	0	0	0	0	0	0	0	0	28,495	0	0	0
Salda-3	177	206	211	153	162	155	139	112	104	102	95		1,616	29,006	1,809	1,067	1,514
Salda-4	0	10	10	10	10	6	7	5	7	7	11		84	230	29	70	14
Field Total:	177	216	222	163	173	161	146	117	110	109	106	0	1,700	94,634	1,838	1,137	1,527
Daily Avg.(mmscfd)	6	7	7	5	6	5	5	4	4	4	4	0	5		5	3	4
Field : Sangu																	
Sangu-1	0	0	0	0	0	0	0	0	0	0	0	0	0	116,191	0	0	0
Sangu-3z	0	0	0	0	0	0	0	0	0	0	0	0	0	131,796	0	0	0
Sangu-4	0	0	0	0	0	0	0	0	0	0	0	0	0	87,280			
Sangu-5	0	0	0	0	0	0	0	0	0	0	0	0	0	61,674			
Sangu-7	0	0	0	0	0	0	0	0	0	0	0	0	0	18,202			
Sangu-8	0	0	0	0	0	0	0	0	0	0	0	0	0	37,619			
Sangu-9	0	0	0	0	0	0	0	0	0	0	0	0	0	30,638	0	0	0
Sangu-10	Production Suspended						0	0	0	0	0	0	0				
Sangu-11	0	0	0	0	0	0	0	0	0	0	0	0	0	6,067	0	0	0
Field Total:	0	0	0	0	0	0	0	0	0	0	0	0	0	489,467	0	0	0

Monthly Production by Field and Well upto November- 2020



HYDROCARBON UNIT
Energy & Mineral Resources Division

Figures in mmscf

Well	Jan	Feb	Mar	Apr	May	Jun	Jul	Aug	Sep	Oct	Nov	Dec	Total	Cumulative	2019	2018	2017
Daily Avg.(mmscfd)	0	0	0	0	0	0	0	0	0	0	0	0	0		0	0	0
Field :	Semutang																
Semutang-5	12	10	11	10	10	9	10	10	7	5	5		99	12,303	140	291	471
Semutang-6	17	16	17	16	17	16	17	18	14	15	21		184	1,301	161	84	66
Field Total:	29	26	28	26	28	26	27	27	21	20	26	0	282	13,604	301	375	537
Daily Avg.(mmscfd)	1	1	1	1	1	1	1	1	1	1	1	0	1		1	1	1
Field :	Shahbazpur																
Shahbazpur-1	230	0	0	16	0	0	0	0	7	0	0		254	22,486	874	134	4,835
Shahbazpur-2	4	178	424	204	475	654	730	709	701	459	387		4,926	22,203	6,196	6,650	4,243
Shahbazpur-3	626	592	635	628	658	562	622	169	229	496	495		5,712		6,668	5,222	1,162
Shahbazpur-4	355	342	455	206	40	67	0	483	414	9	1		2,374	21,141	5,764	6,936	1,801
Field Total:	1,216	1,113	1,514	1,054	1,174	1,283	1,352	1,361	1,352	965	883	0	13,266	65,830	19,501	18,943	12,041
Daily Avg.(mmscfd)	39	38	49	35	38	43	44	44	45	31	29	0	40		53	52	33
Field	Srikail																
Srikail-2	426	387	400	338	347	344	351	358	373	386	378		4,087	47,319	5,288	5,154	5,384
Srikail-3	319	301	298	236	263	281	281	283	278	290	284		3,114	41,934	3,988	4,273	4,944
Srikail-4	236	226	225	156	182	208	201	190	148	0	140		1,911	13,382	3,026	2,971	3,439
Field Total:	981	914	923	730	792	832	833	830	798	676	802	0	9,113	102,634	12,301	12,398	13,767
Daily Avg.(mmscfd)	32	32	30	24	26	28	27	27	27	22	27	0	27		34	34	38
Field :	Sundalpur																
Sundalpur -1	0	0	0	0	0	0	0	0	0	0	0	0	0	9,809	0	0	0
Sundalpur -2	223	207	222	216	224	218	229	227	223	224	215		2,426	7,175	2,572	2,176	0
Field Total:	223	207	222	216	224	218	229	227	223	224	215	0	2,426	16,984	2,572	2,176	0
Daily Avg.(mmscfd)	7	7	7	7	7	7	7	7	7	7	7	0	7		7	6	0
Field :	Sylhet																
Sylhet-3	Production Suspended													89,032			
Sylhet-6	Production Suspended													91,748			
Sylhet-7	114	109	117	112	117	114	117	117	113	117	113		1,261	29,625	1,373	1,622	2,061
Surma-1	0	0	0	0	0	0	0	0	0	0	0	0	0	6,528	0	0	249

Monthly Production by Field and Well upto November- 2020



HYDROCARBON UNIT
Energy & Mineral Resources Division

Figures in mmscf

Well	Jan	Feb	Mar	Apr	May	Jun	Jul	Aug	Sep	Oct	Nov	Dec	Total	Cumulative	2019	2018	2017
Field Total:	114	109	117	112	117	114	117	117	113	117	113	0	1,261	216,933	1,373	1,622	2,309
Daily Avg.(mmscfd)	4	4	4	4	4	4	4	4	4	4	4	0	4		4	4	6
Field :	Titas																
Titas-1	548	510	505	176	291	503	516	521	507	520	506		5,103	451,379	6,648	8,516	7,897
Titas-2	912	848	786	273	403	839	870	872	848	856	840		8,347	454,728	10,877	11,522	11,506
Titas-3	0		0	0	0	0	0	0	0	0	0		0	314,888	0	0	
Titas-4	906	837	804	364	358	846	873	890	869	883	847		8,476	389,941	11,013	11,726	11,798
Titas-5	1,003	926	743	206	359	906	920	896	896	895	878		8,628	448,600	11,720	11,838	11,869
Titas-6	881	821	777	247	404	924	963	933	872	877	853		8,552	381,293	9,613	12,030	12,029
Titas-7	854	814	117	0	0	0	0	0	0	0	0		1,784	356,893	10,244	11,919	11,707
Titas-8	525	454	451	225	330	442	474	445	439	437	431		4,652	283,139	5,851	6,154	6,889
Titas-9	6	468	504	436	487	443	464	486	591	618	625		5,127	287,817	6,200	6,706	8,246
Titas-10	671	624	646	431	518	644	677	669	638	633	613		6,765	213,635	7,869	7,612	7,431
Titas-11	844	781	778	732	773	800	822	786	784	794	765		8,660	264,394	8,834	9,998	10,276
Titas-12	468	440	454	442	458	457	467	459	449	452	428		4,973	110,987	5,239	5,160	5,168
Titas-13	0	0	0	0	0	0	0	0	0	0	0		0	194,541	4,449	6,952	7,879
Titas-14	509	474	479	401	410	424	429	418	395	364	345		4,648	160,703	6,070	7,203	8,309
Titas-15	406	376	393	363	390	363	357	349	335	335	314		3,981	148,472	4,978	5,543	7,973
Titas-16	590	555	543	386	416	559	568	560	544	559	536		5,814	159,369	7,209	8,605	10,060
Titas-17	493	455	392	244	426	428	404	421	436	420	422		4,541	49,838	5,794	6,335	7,011
Titas-18	521	485	420	248	389	440	420	439	459	445	442		4,710	48,828	6,113	6,664	7,168
Titas-19	469	437	426	247	286	402	440	427	410	413	392		4,348	37,989	5,592	6,115	6,106
Titas-20	311	293	308	207	336	336	338	317	346	339	337		3,466	25,883	3,589	3,914	3,635
Titas-21	254	243	254	216	234	236	244	256	241	232	237		2,647	14,916	3,036	2,995	2,800
Titas-22	220	206	222	215	230	207	213	173	193	177	190		2,247	29,797	3,133	4,158	4,336
Titas-27	495	464	392	237	395	445	433	460	479	473	472		4,743	39,184	5,602	5,827	6,136
Titas-23	462	426	460	444	444	428	438	439	422	464	447		4,874	19,958	5,079	5,594	4,410
Titas-24	147	141	144	131	138	118	96	94	91	54	37		1,189	8,970	2,789	2,709	2,283
Titas-25	471	440	456	406	431	444	469	471	456	466	452		4,961	23,600	6,424	6,324	5,622
Titas-26	792	740	751	580	707	762	785	780	769	778	750		8,193	36,086	8,628	9,672	9,210
Field Total:	13,757	13,255	12,205	7,856	9,612	12,394	12,676	12,561	12,471	12,484	12,159	0	131,431	4,955,829	172,591	191,792	197,756
Daily Avg.(mmscfd)	444	457	394	262	310	413	409	405	416	403	405	0	392		473	525	542

Monthly Production by Field and Well upto November- 2020



HYDROCARBON UNIT
Energy & Mineral Resources Division

Figures in mmscf

Well	Jan	Feb	Mar	Apr	May	Jun	Jul	Aug	Sep	Oct	Nov	Dec	Total	Cumulative	2019	2018	2017
Field : Begumganj																	
Begumganj-3	173	162	169	123	114	163	166	174	176	177	171		1,767	5,386	2,150	593	0
Field Total:	173	162	169	123	114	163	166	174	176	177	171	0	1,767	5,386	2,150	593	0
Daily Avg.(mmscfd)	6	6	5	4	4	5	5	6	6	6	6	0	5		6	2	0
Field : Rupganj																	
Rupganj-1	0	0	0										0	679	0	0	679
Field Total:	0	0	0	0	0	0	0	0	0	0	0	0	0	679	0	0	679
Daily Avg.(mmscfd)	0	0	0	0	0	0	0	0	0	0	0	0	0		0	0	2
Grand Total (in Bcf)	79.32	74.54	74.15	50.88	67.48	75.75	77.06	73.20	74.86	75.96	74.61	0.00	797.8	18,166.03	933.8	964.7	979.8
Daily Avg.(mmscfd)	2,559	2,570	2,392	1,696	2,177	2,525	2486	2,361	2,495	2,450	2,487	0	2,381		2,558	2,643	2,684

Monthly Condensate Production by Fields upto November 2020



Field Name	Jan-20	Feb-20	Mar-20	Apr-20	May-20	Jun-20	Jul-20	Aug-20	Sep-20	Oct-20	Nov-20	Dec-20	Total	Cumulative	2019	2018	2017	
														000' bbl				
Bakhrabad	1,884	1,750	1,589	1,441	1,586	1,437	1,522	1,342	1,359	1,285	1,243		16,438	1,045	8,201	5,022	6,173	
Daily Avg.	61	60	51	48	51	48	49	43	45	41	41	0	54		22	14	17	
Bangura	9,402	9,091	8,299	3,209	7,105	8,652	8,658	8,216	8,068	8,574	8,169		87,443	1,257	104,034	94,737	103,198	
Daily Avg.	303	313	268	107	229	288	279	265	269	277	272	0	287		285	260	283	
Beani Bazar	4,054	3,913	4,033	3,836	3,892	3,760	3,846	3,844	3,674	3,702	3,647		42,202	1,660	50,497	51,187	68,202	
Daily Avg.	131	135	130	128	126	125	124	27	122	119	122	0	138		138	140	187	
Bibiyana	264,088	253,166	252,073	177,105	223,283	248,751	243,288	211,371	215,272	231,093	231,022		2,550,512	26,799	3,094,275	3,267,318	3,283,757	
Daily Avg.	8,519	8,730	8,131	5,904	7,203	8,292	7,848	6,818	7,176	7,455	7,701	0	8,362		8,477	8,952	8,997	
Chattak	0	0	0	0	0	0	0	0	0	0	0	0	0	4	0	0	0	
Daily Avg.	0	0	0	0	0	0	0	0	0	0	0	0	0		0	0	0	
Fenchuganj	35	41	36	24	23	45	73	67	61	39	32		476	116	738	1,625	2,462	
Daily Avg.	1	1	1	1	1	2	2	2	2	1	1	0	2		2	4	7	
Feni	0	0	0	0	0	0	0	0	0	0	0	0	0	110	0	0	0	
Daily Avg.	0	0	0	0	0	0	0	0	0	0	0	0	0		0	0	0	
Habiganj	531	542	568	469	483	474	461	494	520	513	18		5,073	142	7,233	5,612	3,955	
Daily Avg.	17	19	18	16	16	16	15	16	17	17	1	0	17		20	15	11	
Jalalabad	34,240	31,441	30,350	19,778	30,402	32,193	30,721	29,974	31,831	31,898	31,705		334,534	10,792	318,424	367,160	437,070	
Daily Avg.	1,105	1,084	979	659	981	1,073	991	967	1,061	1,029	1,057	0	1,097		872	1,006	1,197	
Kailas Tila	12,599	12,646	13,590	16,327	16,462	12,667	14,327	12,022	16,898	16,858	16,087		160,484	8,126	170,713	189,620	203,979	
Daily Avg.	406	436	438	544	531	422	462	388	563	544	536	0	526		468	520	559	
Kamta	Production Suspended										0	0		4				
Daily Avg.											0	0		0		0	0	0
Meghna	575	529	606	572	550	541	562	553	564	561	541		6,154	121	7,098	7,947	7,741	
Daily Avg.	19	18	20	19	18	18	18	18	19	18	18	0	20		19	22	21	
Moulavi Bazar	194	113	70	0	46	368	58	70	112	79	85		1,196	119	745	856	1,128	
Daily Avg.	6	4	2	0	1	12	2	2	4	3	3	0	4		2	2	3	

Monthly Condensate Production by Fields upto November 2020



Field Name	Jan-20	Feb-20	Mar-20	Apr-20	May-20	Jun-20	Jul-20	Aug-20	Sep-20	Oct-20	Nov-20	Dec-20	Total	Cumulative	2019	2018	2017
														000' bbl			
Narshingdi	1,269	1,165	1,170	1,104	1,173	1,138	1,179	1,138	1,120	1,143	1,137		12,736	445	14,029	15,797	16,656
Daily Avg.	41	40	38	37	38	38	38	37	37	37	38	0	42		38	43	46
Rashidpur	1,472	1,367	1,471	1,362	1,394	1,300	1,412	1,265	759	1,347	871		14,020	806	16,268	14,393	10,723
Daily Avg.	47	47	47	45	45	43	46	41	25	43	29	0	46		45	39	29
Saldanadi	24	20	24	20	22	22	27	21	13	15	16		225	59	302	137	225
Daily Avg.	1	1	1	1	1	1	1	1	0	0	1	0	1		1	0	1
Sangu	0	0	0	0	0	0	0	0	0	0	0	0	0	37	0	0	0
Daily Avg.	0	0	0	0	0	0	0	0	0	0	0	0	0		0	0	0
Semutang	0	0	0	0	0	0	0	0	0	0	0		0	5	4	26	99
Daily Avg.	0	0	0	0	0	0	0	0	0	0	0	0	0		0	0	0
Shahbazpur	120	131	180	142	140	157	192	211	189	127	125		1,715	10	2,034	2,488	1,791
Daily Avg.	4	5	6	5	5	5	6	7	6	4	4	0	5		6	7	5
Srikail	2,591	2,685	2,720	2,127	2,323	2,480	80	78	79	65	93		15,322	178	34,193	33,765	37,879
Daily Avg.	84	93	88	71	75	83	3	3	3	2	3	0	46		94	93	104
Sundalpur	12	9	14	14	13	16	1	0	0	0	0		81	1	172	121	0
Daily Avg.	0	0	0	0	0	1	0	0	0	0	0	0	0		0	0	0
Sylhet	900	901	897	851	764	721	692	667	621	655	660		8,330	814	9,691	10,277	15,593
Daily Avg.	29	31	29	28	25	24	22	22	21	21	22	0	25		27	28	43
Titas	12,479	11,693	9,703	7,625	8,938	10,059	9,925	9,473	9,050	9,584	9,199		107,728	5,474	141,979	159,803	154,262
Daily Avg.	403	403	313	254	288	335	320	306	302	309	307	0	322		389	438	423
Begumganj	63	53	57	46	41	62	2	2	2	2	2		330	1	711	201	0
Daily Avg.	2	0	0	0	0	2	0	0	0	0	0	0	1		2	1	0
Rupganj	0	0	0	0	0	0	0	0	0	0	0		0	1	0	0	1,133
Daily Avg.	0	0	0	0	0	0	0	0	0	0	0	0	0		0	0	3
Total (000'bbl)	347	331	327	236	299	325	317	281	290	308	305	0	3,365	58,123	3,981	4,228	4,356
Daily Avg. (000'bbl)	11.2	11.4	10.6	7.9	9.6	11	10.2	9.1	9.7	9.9	10	0	10		10.9	11.6	11.9

Note: Historical condensate figure of Sangu available from 2006. Sylhet available from August 1964

Monthly Water Production by Fields in November 2020



HYDROCARBON UNIT
Energy & Mineral Resources Division

Field Name	Jan-20	Feb-20	Mar-20	Apr-20	May-20	Jun-20	Jul-20	Aug-20	Sep-20	Oct-20	Nov-20	Dec-20	Total	2019	
Bakhrabad	2,447	2,122	2,440	2,003	1,945	1,887	1,981	2,015	1,922	2,080	1,899		22,741	25,025	28,218
Daily Avg.	79	73	79	67	63	63	64	65	64	67	63	0	68	69	77
Bangura	3,530	3,282	3,009	801	2,602	3,333	3,420	3,255	3,287	3,780	5,244		35,543	38,297	43,917
Daily Avg.	114	113	97	27	84	111	110	105	110	122	175	0	106	105	120
Beani Bazar	12,271	12,741	14,234	13,937	14,419	14,507	15,439	15,601	15,139	15,940	15,710		159,938	130,468	109,854
Daily Avg.	396	439	459	465	465	484	498	503	505	514	524	0	477	357	301
Bibiyana	16,735	15,786	16,483	12,167	15,155	17,888	17,641	17,154	19,583	19,848	19,542		187,982	194,287	194,651
Daily Avg.	540	544	532	406	489	596	569	553	653	640	651	0	561	532	533
Chattak	0	0	0	0	0	0	0	0	0	0	0	0			
Daily Avg.	0	0	0	0	0	0	0	0	0	0	0	0	0	0	0
Fenchuganj	1,743	1,881	1,573	1,721	1,911	2,194	2,646	3,151	3,067	2,699	2,878		25,463	34,864	74,969
Daily Avg.	56	65	51	57	62	73	85	102	102	87	96	0	76	96	205
Feni	0	0	0	0	0	0	0	0	0	0	0	0	0	0	0
Daily Avg.	0	0	0	0	0	0	0	0	0	0	0	0	0	0	0
Habiganj	849	943	1,031	703	1,029	1,256	2,502	2,056	1,633	1,309	960		14,271	12,931	39,104
Daily Avg.	27	33	33	23	33	42	81	66	54	42	32	0	43	35	107
Jalalabad	9,322	8,854	7,003	4,855	5,039	4,946	4,587	5,370	5,174	5,254	5,670		66,074	57,962	55,950
Daily Avg.	301	305	226	162	163	165	148	173	172	169	189	0	197	159	153
Kailas Tila	17,780	19,550	10,126	3,792	4,023	4,198	224	4,863	6,495	8,027	9,086		88,164	68,693	43,233
Daily Avg.	574	674	327	126	130	140	7	157	217	259	303	0	263	188	118
Kamta	0	0	0	0	0	0	0	0	0	0	0	0			
Daily Avg.	0	0	0	0	0	0	0	0	0	0	0	0	0	0	0
Meghna	1,105	1,074	1,212	1,240	1,277	1,294	1,428	1,457	1,512	1,638	1,624		14,861	8,048	2,014
Daily Avg.	36	37	39	41	41	43	46	47	50	53	54	0	44	22	6
Moulavi Baza	423	283	160	0	123	761	289	201	1,387	2,370	728		6,726	5,447	13,965
Daily Avg.	14	10	5	0	4	25	9	6	46	76	24	0	20	15	38
Narshingdi	915	855	861	704	920	848	880	852	814	851	824		9,324	10,069	10,374
Daily Avg.	30	29	28	23	30	28	28	27	27	27	27	0	28	28	28
Rashidpur	13,644	12,554	13,120	12,425	12,796	12,361	12,726	12,542	12,027	12,750	4,332		131,277	158,452	137,406
Daily Avg.	440	433	423	414	413	412	411	405	401	411	144	0	392	434	376
Saldanadi	136	129	137	151	205	197	191	177	181	166	161		1,832	1,570	813
Daily Avg.	4	4	4	5	7	7	6	6	6	5	5	0	5	4	2

Monthly Water Production by Fields in November 2020



HYDROCARBON UNIT
Energy & Mineral Resources Division

Field Name	Jan-20	Feb-20	Mar-20	Apr-20	May-20	Jun-20	Jul-20	Aug-20	Sep-20	Oct-20	Nov-20	Dec-20	Total	2019	
Sangu	0	0	0	0	0	0	0	0	0	0	0	0	0	0	0
Daily Avg.	0	0	0	0	0	0	0	0	0	0	0	0	0	0	0
Semutang	146	127	152	134	103	126	5	7	18	13	34		866	966	3,002
Daily Avg.	5	4	5	4	3	4	0	0	1	0	1	0	3	3	8
Shahbazpur	1,491	1,361	1,855	1,299	1,444	1,571	1,665	1,672	1,666	1,218	1,095		16,337	23,785	22,110
Daily Avg.	48	47	60	43	47	52	54	54	56	39	37	0	49	65	61
Srikail	1,606	1,511	1,526	1,136	1,278	1,419	46	45	45	38	40		8,690	19,783	18,432
Daily Avg.	52	52	49	38	41	47	1	1	2	1	1	0	26	54	50
Sundalpur	33	29	32	32	33	34	1	1	1	1	1		199	354	219
Daily Avg.	1	1	1	1	1	1	0	0	0	0	0	0	1	1	1
Sylhet	5,906	9,948	10,396	9,389	9,656	9,524	9,884	9,887	9,580	10,151	9,948		104,270	39,488	20,362
Daily Avg.	191	343	335	313	311	317	319	319	319	327	332	0	311	108	56
Titas	26,186	24,901	25,603	22,645	25,215	26,277	28,810	21,606	22,048	21,159	21,590		266,040	517,843	556,608
Daily Avg.	845	859	826	755	813	876	929	697	735	683	720	0	794	1,419	1,525
Begumganj	67	63	62	42	44	65	2	2	2	2	2		353	738	207
Daily Avg.	2	2	2	1	1	2	0	0	0	0	0	0	1	2	1
Rupganj	0	0	0	0	0	0	0	0	0	0	0		0	0	0
Daily Avg.	0	0	0	0	0	0	0	0	0	0	0	0	0	0	0
Total (000'bl	116,336	117,993	111,015	89,176	99,217	104,687	104,367	101,915	105,582	109,294	101,368	0	1,160,952	1,349,070	1,375,408
Daily Avg. (000'bbl)	3,753	4,069	3,581	2,973	3,201	3,490	3,367	3,288	3,519	3,526	3,379	0	3,466	3,696	3,768

Conditions of Field and Well upto November 2020



Well	company	well type	Discovery	production start	Drilled depth (ft)	Pressure	Pressure type	Completion Zone
Field : Bakharabad								
BKB-1	BGFCL	Vertical	1969	June,1969	9309		FWHP	J
BKB-2	BGFCL	Directional	1969	October,1981	7496	248-274	FWHP	G
BKB-3	BGFCL	Directional	1969	April,1982	9339	356-412	FWHP	G
BKB-4	BGFCL	Directional	1969	June,1982	9430			D
BKB-5	BGFCL	Directional	1969	Sept,1982	9675	1555-1646	FWHP	B
BKB-6	BGFCL	Directional	1969	March,1989	8785			J
BKB-7	BGFCL	Directional	1969	July,1989	8605		FWHP	J
BKB-8	BGFCL	Directional	1969	Sept,1989	8840	490-523	FWHP	J
BKB-9	BGFCL	Vertical	1969	August,2013	8318	1005-1097	FWHP	G
BKB-10	BGFCL	Directional	1969	June,2016	9291	1010-1102	FWHP	K
Field : Bangura								
Bangura-1	Tullow		2004			887-940	FWHP	D
Bangura-2	Tullow		2004			587-685	FWHP	D/E
Bangura-3	Tullow		2004			719-789	FWHP	D
Bangura-6	Tullow		2004			708-780	FWHP	D
Bangura-5	Tullow		2004			579-621	FWHP	D
Field : Beani Bazar								
BB-1	SGFL		1981	July,1999	13480	580-620	SIWHP	Upper
BB-2	SGFL		1981	July,1999	12048	3210-3220	FWHP	Upper
Field : Bibiyana								
BY-1	Chevron		1998			1547-2007	FWHP	BB60, BB66
BY-2	Chevron		1998			1313-1390	FWHP	BB60, BH20A, BH20E
BY-3	Chevron		1998			1363-1403	FWHP	BB70
BY-4	Chevron		1998			1330-1390	FWHP	BH10
BY-5	Chevron		1998			1254-1299	FWHP	BH20A, BH20B, BH20C, BH20D
BY-6	Chevron		1998			1250-1486	FWHP	BB70
BY-7	Chevron		1998			1454-1566	FWHP	BH10
BY-8	Chevron		1998			1270-1297	FWHP	BH20A, BH20B
BY-9	Chevron		1998			1243-1273	FWHP	BH10
BY-10	Chevron		1998			1465-1533	FWHP	BB60
BY-11	Chevron		1998			1260-1284	FWHP	BH20A, BH20B
BY-12	Chevron		1998			1259-1332	FWHP	BB70
BY-13	Chevron		1998			1300-1356	FWHP	BH20A, BH20B
BY-14	Chevron		1998			1342-1632	FWHP	BH20A, BH20B
BY-15	Chevron		1998			2189-2240	FWHP	BB60
BY-16	Chevron		1998			1381-1644	FWHP	BH10, BH20D

Conditions of Field and Well upto November 2020



Well	company	well type	Discovery	production start	Drilled depth (ft)	Pressure	Pressure type	Completion Zone
BY-17	<i>Chevron</i>		<i>1998</i>			<i>2104-2229</i>	<i>FWHP</i>	<i>BB60</i>
BY-18	<i>Chevron</i>		<i>1998</i>			<i>1904-2218</i>	<i>FWHP</i>	<i>BB60</i>
BY-19	<i>Chevron</i>		<i>1998</i>			<i>1354-1477</i>	<i>FWHP</i>	<i>BH10, BH20A</i>
BY-20	<i>Chevron</i>		<i>1998</i>			<i>1248-1262</i>	<i>FWHP</i>	<i>BH20D, BH20A, BH10</i>
BY-21	<i>Chevron</i>		<i>1998</i>			<i>1333-1348</i>	<i>FWHP</i>	<i>BH20A, BH20B, BH10</i>
BY-22	<i>Chevron</i>		<i>1998</i>			<i>1552-1586</i>	<i>FWHP</i>	<i>BB60</i>
BY-23	<i>Chevron</i>		<i>1998</i>			<i>1739-2021</i>	<i>FWHP</i>	<i>BH10, BH20A, BH20B, BH20C</i>
BY-24	<i>Chevron</i>		<i>1998</i>			<i>1337-2091</i>	<i>FWHP</i>	<i>BB60</i>
BY-25	<i>Chevron</i>		<i>1998</i>			<i>1728-1857</i>	<i>FWHP</i>	<i>BB60, BB66</i>
BY-26	<i>Chevron</i>		<i>1998</i>			<i>1877-2094</i>	<i>FWHP</i>	<i>BB60, BB64</i>
Field : Chattak								
Ch-1	SGFL		1959					
Field : Fenchuganj								
Fenchuganj-2	<i>BAPEX</i>		<i>1988</i>	<i>May, 2004</i>				
Fenchuganj-3	<i>BAPEX</i>		<i>1988</i>	<i>February, 2005</i>		<i>2004-2010</i>		<i>upper</i>
Fenchuganj-4	<i>BAPEX</i>		<i>1988</i>			<i>2037-2065</i>		
Field : Feni								
Feni-1	<i>BAPEX</i>		<i>1981</i>					
Feni-2	<i>BAPEX</i>		<i>1981</i>					
Feni-3	<i>BAPEX</i>		<i>1981</i>					
Feni-4	<i>BAPEX</i>		<i>1981</i>					
Feni-5	<i>BAPEX</i>		<i>1981</i>					
Field : Habiganj								
Hbj-1	<i>BGFCL</i>	<i>Vertical</i>	<i>1963</i>	<i>Feb, 1969</i>	<i>11500</i>		<i>FWHP</i>	<i>upper</i>
Hbj-2	<i>BGFCL</i>	<i>Vertical</i>	<i>1963</i>	<i>Feb, 1969</i>	<i>5100</i>		<i>FWHP</i>	<i>upper</i>
Hbj-3	<i>BGFCL</i>	<i>Vertical</i>	<i>1963</i>	<i>July, 1985</i>	<i>5282</i>	<i>1478-1486</i>	<i>FWHP</i>	<i>upper</i>
Hbj-4	<i>BGFCL</i>	<i>Vertical</i>	<i>1963</i>	<i>May, 1985</i>	<i>5249</i>	<i>1460-1467</i>	<i>FWHP</i>	<i>upper</i>
Hbj-5	<i>BGFCL</i>	<i>Directional</i>	<i>1963</i>	<i>Feb, 1992</i>	<i>11552</i>	<i>1440-1446</i>	<i>FWHP</i>	<i>upper</i>
Hbj-6	<i>BGFCL</i>	<i>Vertical</i>	<i>1963</i>	<i>Feb, 1992</i>	<i>5515</i>	<i>1375-1379</i>	<i>FWHP</i>	<i>upper</i>
Hbj-7	<i>BGFCL</i>	<i>Vertical</i>	<i>1963</i>	<i>April, 2000</i>	<i>10236</i>	<i>1331-1139</i>	<i>FWHP</i>	<i>upper</i>
Hbj-8	<i>BGFCL</i>	<i>Vertical</i>	<i>1963</i>	<i>May, 2000</i>	<i>5280</i>			<i>upper</i>
Hbj-9	<i>BGFCL</i>	<i>Vertical</i>	<i>1963</i>	<i>July, 1998</i>	<i>5249</i>			<i>upper</i>
Hbj-10	<i>BGFCL</i>	<i>Vertical</i>	<i>1963</i>	<i>Apr, 2000</i>	<i>5133</i>	<i>1322-1331</i>	<i>FWHP</i>	<i>upper</i>
Hbj-11	<i>BGFCL</i>	<i>Vertical</i>	<i>1963</i>	<i>February, 2008</i>	<i>10499</i>	<i>1417-1423</i>	<i>FWHP</i>	<i>upper</i>
Field : Jalalabad								
JB-1	<i>Chevron</i>		<i>1989</i>			<i>1333-1436</i>	<i>FWHP</i>	<i>BB60, BB50</i>

Conditions of Field and Well upto November 2020



Well	company	well type	Discovery	production start	Drilled depth (ft)	Pressure	Pressure type	Completion Zone
JB-2	<i>Chevron</i>		<i>1989</i>			<i>1279-1294</i>	<i>FWHP</i>	<i>BB50, BB60</i>
JB-3	<i>Chevron</i>		<i>1989</i>			<i>1332-1375</i>	<i>FWHP</i>	<i>BB50, BB60</i>
JB-4	<i>Chevron</i>		<i>1989</i>			<i>1365-1425</i>	<i>FWHP</i>	<i>BB60</i>
JB-6	<i>Chevron</i>		<i>1989</i>			<i>1354-1362</i>	<i>FWHP</i>	<i>BB60, BB50</i>
JB-7	<i>Chevron</i>		<i>1989</i>			<i>1666-1679</i>	<i>FWHP</i>	<i>BB20</i>
JB-8	<i>Chevron</i>		<i>1989</i>			<i>1362-1370</i>	<i>FWHP</i>	<i>BB50, BB60</i>
Field : Kailas Tila								
KTL-1	<i>SGFL</i>		<i>1962</i>	<i>June, 1983</i>	<i>12417</i>	<i>0</i>	<i>SIWHP</i>	
KTL-2	<i>SGFL</i>		<i>1962</i>	<i>Feb, 1995</i>		<i>2225-2230</i>	<i>FWHP</i>	
KTL-3	<i>SGFL</i>		<i>1962</i>	<i>March, 1995</i>		<i>2470-2495</i>	<i>FWHP</i>	
KTL-4	<i>SGFL</i>		<i>1962</i>	<i>March, 1997</i>		<i>2360-2410</i>	<i>FWHP</i>	
KTL-5	<i>SGFL</i>		<i>1962</i>	<i>Sep, 2006</i>		<i>0</i>	<i>SIWHP</i>	
KTL-6	<i>SGFL</i>		<i>1962</i>	<i>Aug, 2007</i>		<i>2490-2495</i>	<i>FWHP</i>	
KTL-7	<i>SGFL</i>		<i>1962</i>			<i>0</i>	<i>SIWHP</i>	
Field : Kamta								
Kamta-1	<i>BGFCL</i>	<i>Vertical</i>	<i>1981</i>	<i>july,1982</i>	<i>11857</i>			<i>N/A</i>
Field : Meghna								
M-1	<i>BGFCL</i>	<i>Vertical</i>	<i>2004</i>	<i>july,1990</i>	<i>10069</i>	<i>1400-1450</i>	<i>FWHP</i>	<i>A,E,F & G</i>
Field : Moulavi Bazar								
MV Bazar-2	<i>Chevron</i>		<i>1997</i>			<i>800-820</i>	<i>FWHP</i>	<i>BB70</i>
MV Bazar-3	<i>Chevron</i>		<i>1997</i>			<i>800-820</i>	<i>FWHP</i>	<i>BB70</i>
MV Bazar-4	<i>Chevron</i>		<i>1997</i>			<i>946-952</i>	<i>FWHP</i>	<i>BB20</i>
MV Bazar-5	<i>Chevron</i>		<i>1997</i>			<i>0</i>	<i>SIWHP</i>	<i>BB60</i>
MV Bazar-6	<i>Chevron</i>		<i>1997</i>			<i>822-890</i>	<i>FWHP</i>	<i>BB20</i>
MV Bazar-7	<i>Chevron</i>		<i>1997</i>			<i>844-901</i>	<i>FWHP/SIWHP</i>	<i>BB20</i>
MV Bazar-9	<i>Chevron</i>		<i>1997</i>			<i>0</i>	<i>SIWHP</i>	<i>BB46, BB48, BB60</i>
Field : Narshingdi								
N-1	<i>BGFCL</i>	<i>vertical</i>	<i>1990</i>	<i>october,1990</i>	<i>11320</i>	<i>1143-1197</i>	<i>FWHP</i>	<i>BL</i>
N-2	<i>BGFCL</i>	<i>vertical</i>	<i>1990</i>	<i>february,2007</i>	<i>10778</i>	<i>1015-1097</i>	<i>FWHP</i>	<i>BL</i>
Field : Rashidpur								
RP-1	<i>SGFL</i>		<i>1960</i>			<i>1290-1291</i>	<i>FWHP</i>	<i>Upper</i>
RP-2	<i>SGFL</i>		<i>1960</i>			<i>73</i>	<i>SIWHP</i>	<i>Lower</i>
RP-3	<i>SGFL</i>		<i>1960</i>			<i>1548-1568</i>	<i>FWHP</i>	<i>Lower</i>
RP-4	<i>SGFL</i>		<i>1960</i>			<i>1450-1655</i>	<i>FWHP</i>	<i>Lower</i>
RP-5	<i>SGFL</i>		<i>1960</i>			<i>2291</i>	<i>SIWHP</i>	<i>Lower</i>
RP-6	<i>SGFL</i>		<i>1960</i>			<i>870</i>	<i>SIWHP</i>	<i>A</i>

Conditions of Field and Well upto November 2020



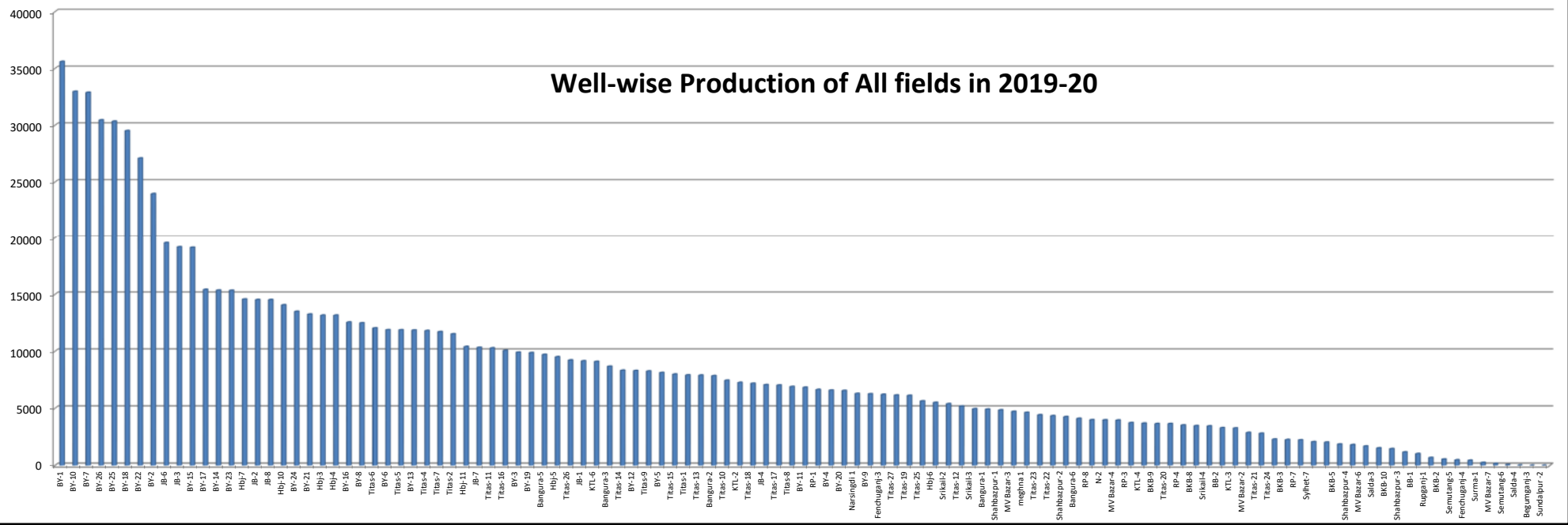
Well	company	well type	Discovery	production start	Drilled depth (ft)	Pressure	Pressure type	Completion Zone
RP-7	SGFL		1960			1308-1338	FWHP	Lower
RP-8	SGFL		1960			1600-1625	FWHP	Upper
Field : Salda Nadi								
Salda-1	BAPEX		1995					
Salda-2	BAPEX		1995					
Salda-3	BAPEX	Directional	1995	February, 2012		639-640, 698-700		Upper/Lower
Salda-4	BAPEX		1995					
Field : Sangu								
Sangu-1	BGFCL		1996					
Sangu-3z	BGFCL		1996					
Sangu-4	BGFCL		1996					
Sangu-5	BGFCL		1996					
Sangu-7	BGFCL		1996					
Sangu-8	BGFCL		1996					
Sangu-9	BGFCL		1996					
Sangu-10	BGFCL		1996					
Sangu-11	BGFCL		1996					
Field : Semutang								
Semutang-5	BAPEX		1967			280-508		Lower Zone
Semutang-6	BAPEX		1967			750-1302		
Field : Shahbazpur								
Shahbazpur-1	BAPEX		1995	May, 2009		2310-3543		Lower Zone
Shahbazpur-2	BAPEX		1995			3541-4133		Lower Zone
Shahbazpur-3	BAPEX		1995			4300		Upper Zone
Shahbazpur-4	BAPEX		1995			4250		Upper Zone
Field : Srikail								
Srikail-2	BAPEX		2012			990-1016		Upper & Lower D
Srikail-3	BAPEX		2012			981-1043		Upper & Lower D
Srikail-4	BAPEX		2012			1018-1068		Upper & Lower D
Field : Sundalpur								
Sundalpur -1	BAPEX		2011					
Sundalpur -2	BAPEX		2011					
Field : Sylhet								
Sylhet-3	SGFL		1955	Aug, 1958				
Sylhet-6	SGFL		1955	Aug, 1964		800-850	SIWHP	
Sylhet-7	SGFL		1955	Apr, 2005		1750-1820	FWHP	Lower Bokabil

Conditions of Field and Well upto November 2020

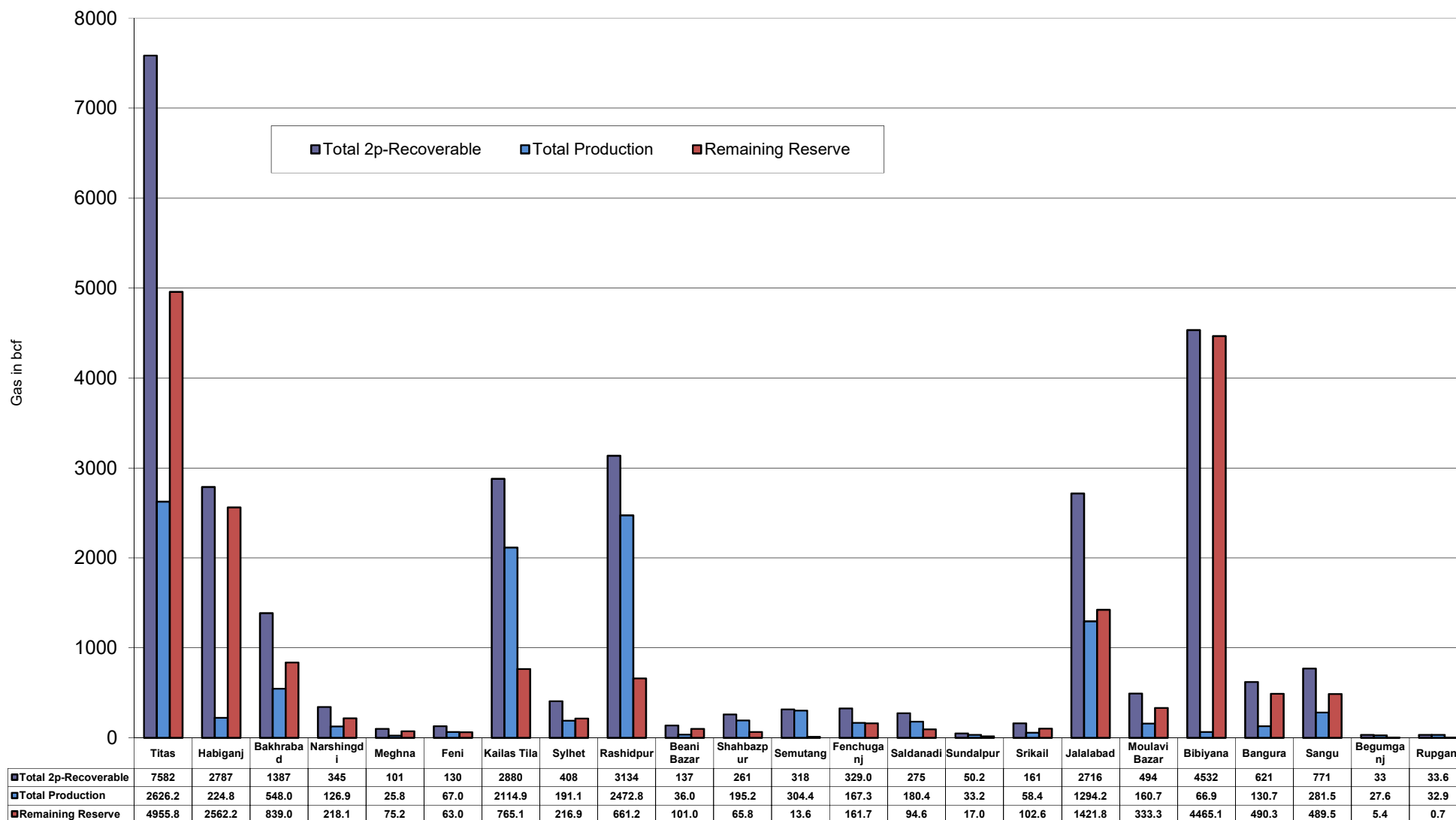


Well	company	well type	Discovery	production start	Drilled depth (ft)	Pressure	Pressure type	Completion Zone
Surma-1	SGFL		1955	June, 2010		230	SIWHP	C & D
Field : Titas								
Titas-1	BGFCL	vertical	1962	Mar,1969	12325	900-925	FWHP	A
Titas-2	BGFCL	vertical	1962	Fen,1969	10574	960-1020	FWHP	A
Titas-3	BGFCL	vertical	1962	sept,1969	9315	0	FWHP	A
Titas-4	BGFCL	vertical	1962	oct,1969	9350	1020-1070	FWHP	A
Titas-5	BGFCL	Directional	1962	jan,1981	10805	990-1035	FWHP	A
Titas-6	BGFCL	vertical	1962	Feb,1984	10072	1195-1225	FWHP	A
Titas-7	BGFCL	Directional	1962	July,1985	11006	1090-1160	FWHP	A
Titas-8	BGFCL	Directional	1962	sept,1985	11760	1000-1030	FWHP	B & C
Titas-9	BGFCL	Directional	1962	jan,1988	11893	1040-1085	FWHP	B & C
Titas-10	BGFCL	Directional	1962	may,1988	12139	1140-1180	FWHP	A
Titas-11	BGFCL	vertical	1962	Jun,1991	10462	1275-1310	FWHP	A
Titas-12	BGFCL	Directional	1962	July,2002	9873	1465-1500	FWHP	A
Titas-13	BGFCL	Directional	1962	June,2000	11487	1085-1115	FWHP	A
Titas-14	BGFCL	Directional	1962	June,2000	11004	1200-1250	FWHP	A
Titas-15	BGFCL	vertical	1962	may,2006	10446	0	FWHP	A
Titas-16	BGFCL	Directional	1962	dec,2005	11673	1205-1225	FWHP	A
Titas-17	BGFCL	vertical	1962	feb,2013	9424	1145-1175	FWHP	A
Titas-18	BGFCL	Directional	1962	august,2013	10932	1165-1190	FWHP	A
Titas-19	BGFCL	Directional	1962	may,2014	12730	1365-1415	FWHP	A
Titas-20	BGFCL	Directional	1962	oct,2013	11585	1370-1440	FWHP	A
Titas-21	BGFCL	Directional	1962	dec,2013	11631	1260-1285	FWHP	A
Titas-22	BGFCL	Directional	1962	march,2014	11926	990-1025	FWHP	A
Titas-27	BGFCL	Directional	1962	april,2014	10292	1245-1265	FWHP	A
Titas-23	BGFCL	Directional	1962	feb,2017	11988	2265-2340	FWHP	C
Titas-24	BGFCL	Directional	1962	oct,2016	12686	1120-1245	FWHP	C
Titas-25	BGFCL	vertical	1962	march,2016	11680	1300-1340	FWHP	A
Titas-26	BGFCL	Directional	1962	july,2016	12618	1840-1875	FWHP	C
Field : Begumganj								
Begumganj-3	BAPEX		1977					
Field : Rupganj								
Rupganj-1	BAPEX		2014			38-88		

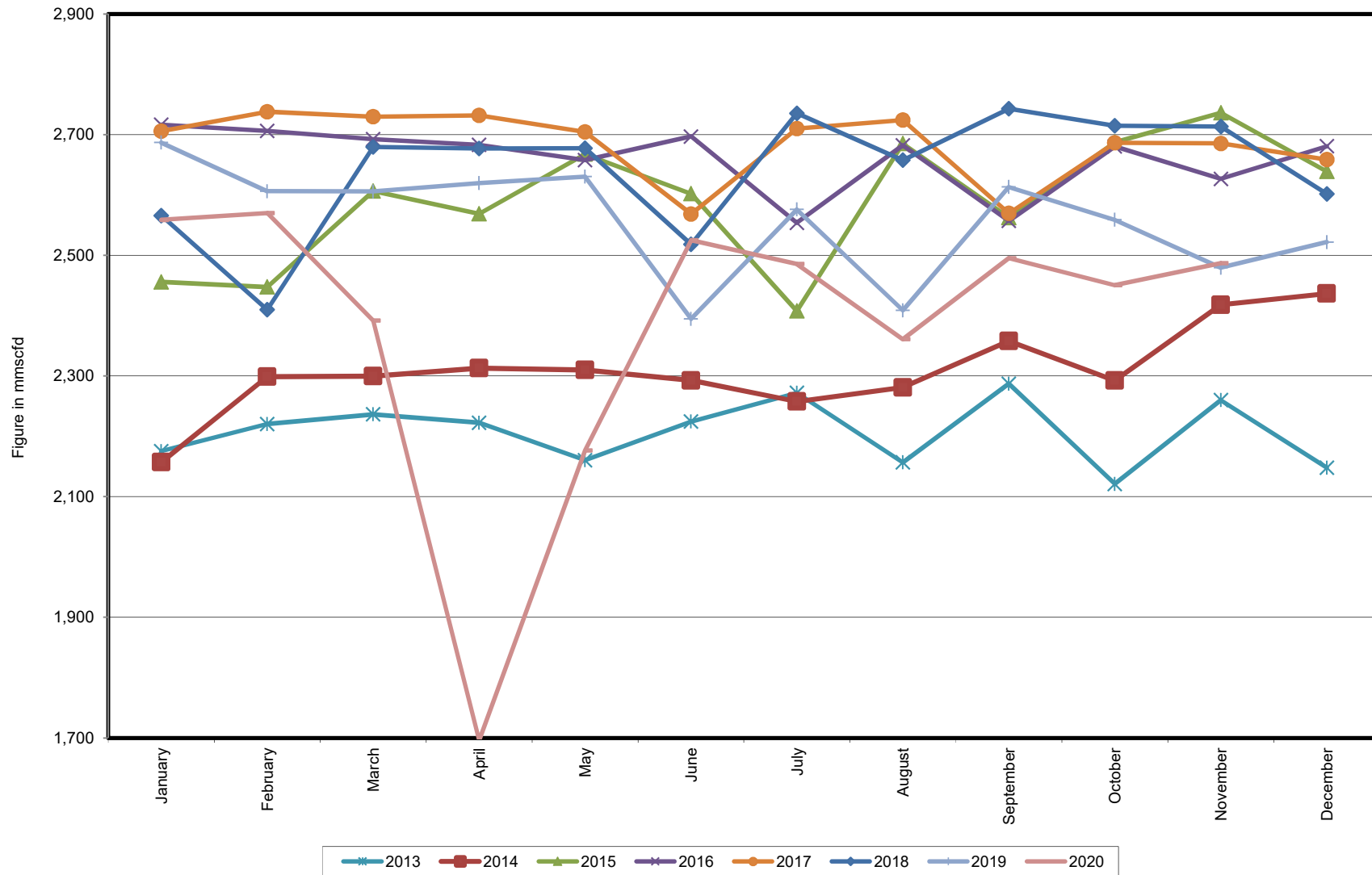
Well-wise Production of All fields in 2019-20



Reserve, Production and Remaining Reserve as of November 2020



Daily Avg. Production From January 2013 to November 2020



Field Wise Daily Avg. Production November 2020

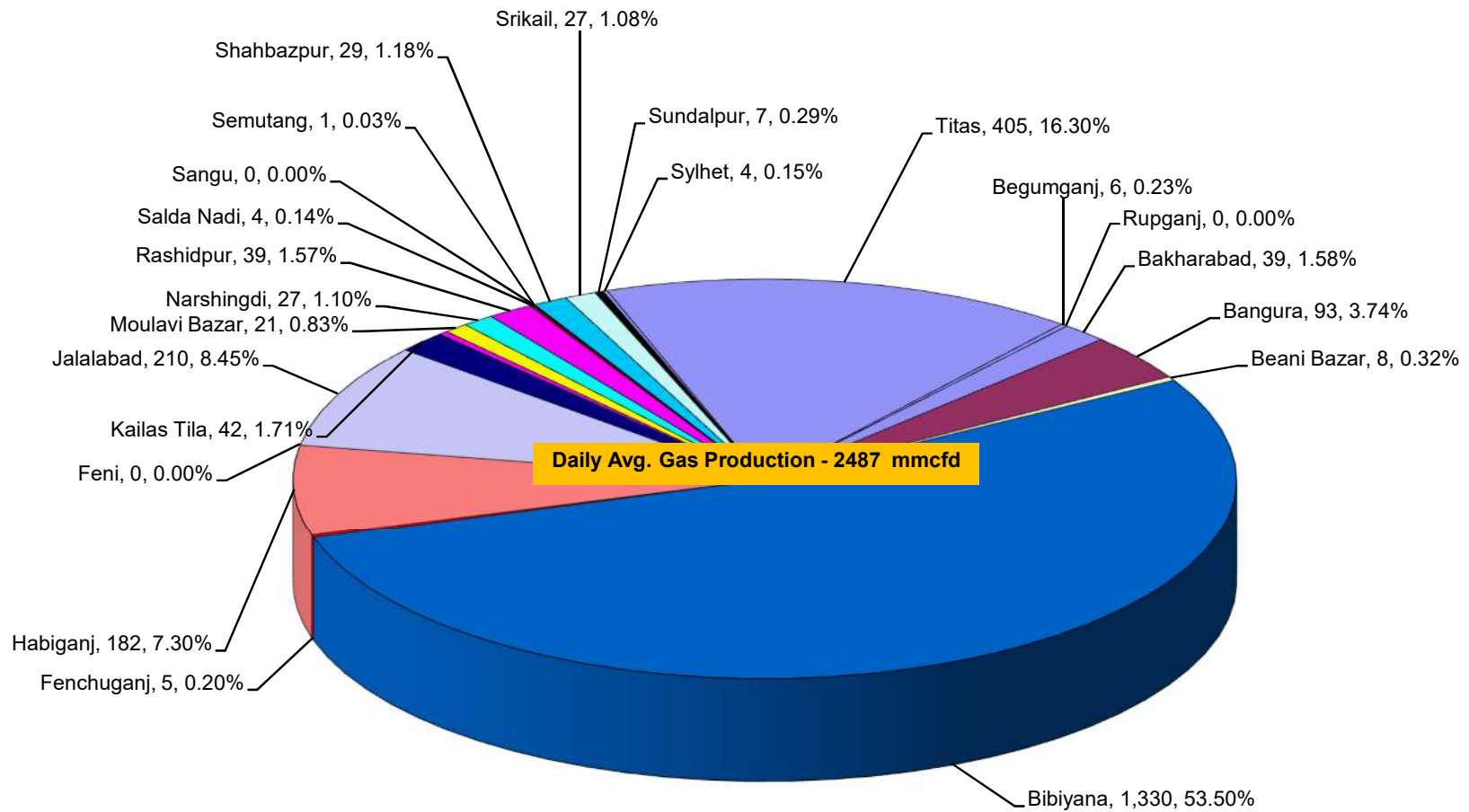
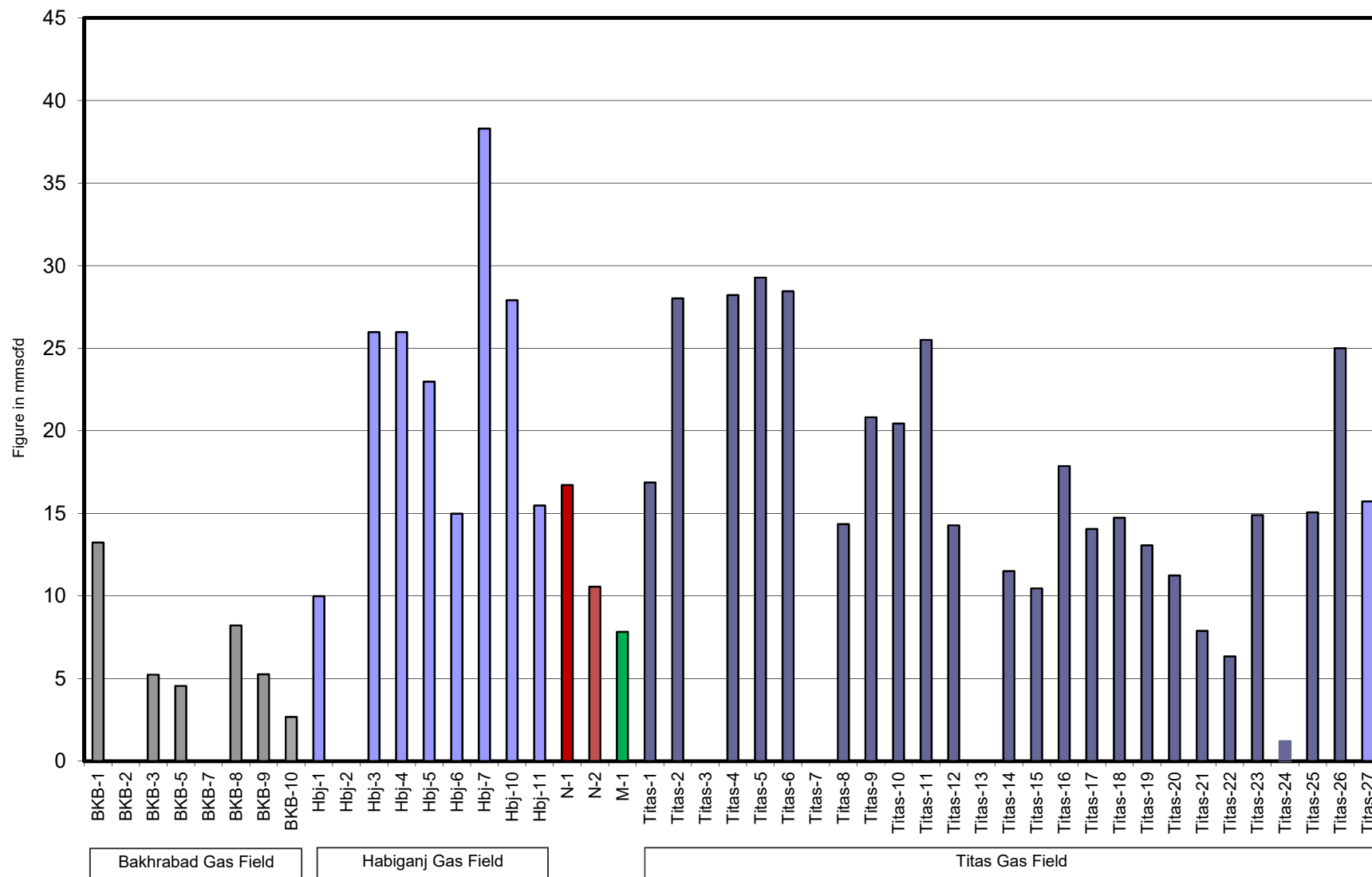


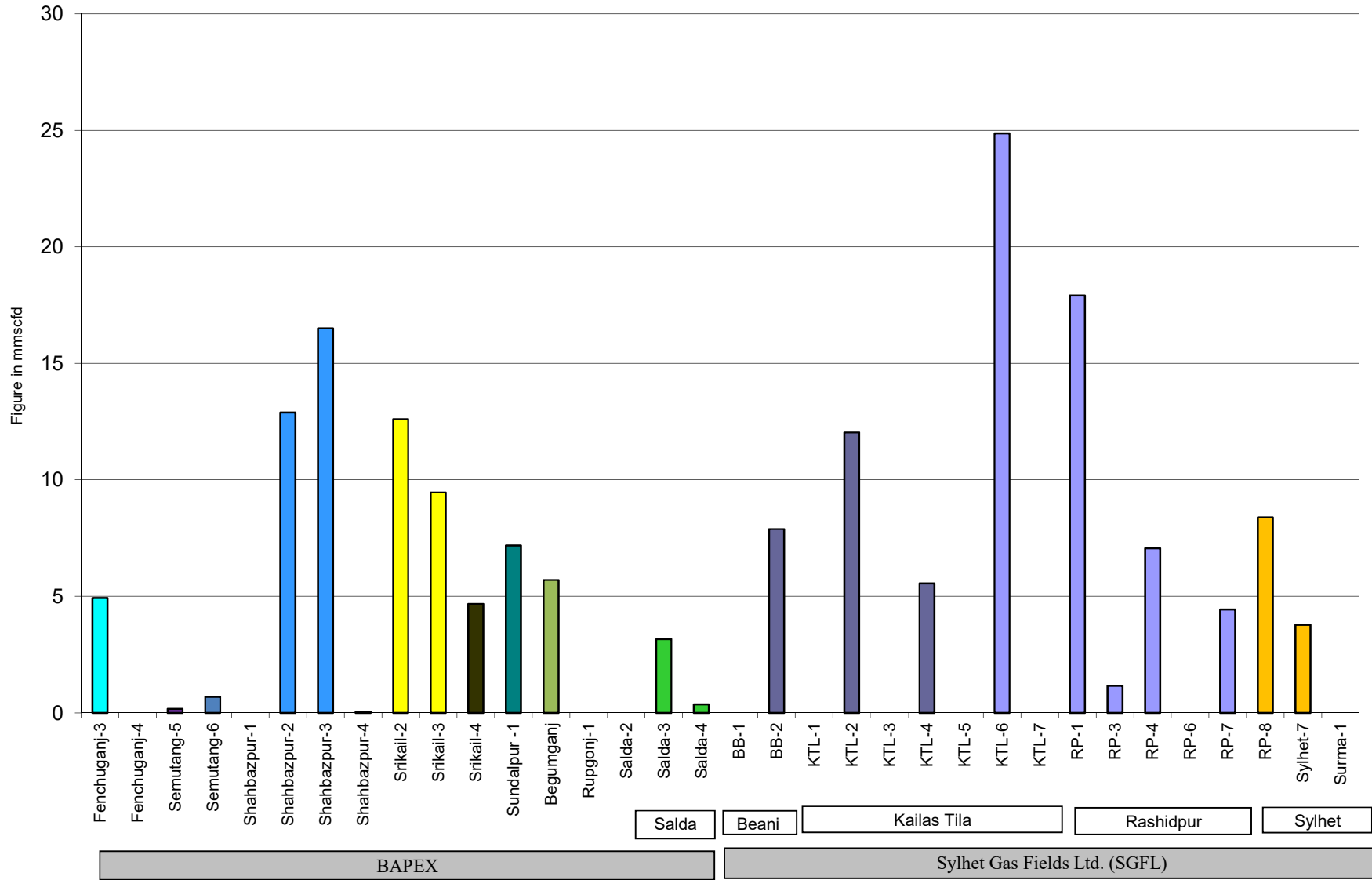
Figure in mmcf and % of total production

Wellwise Daily Avg. Production- BGFCL November 2020

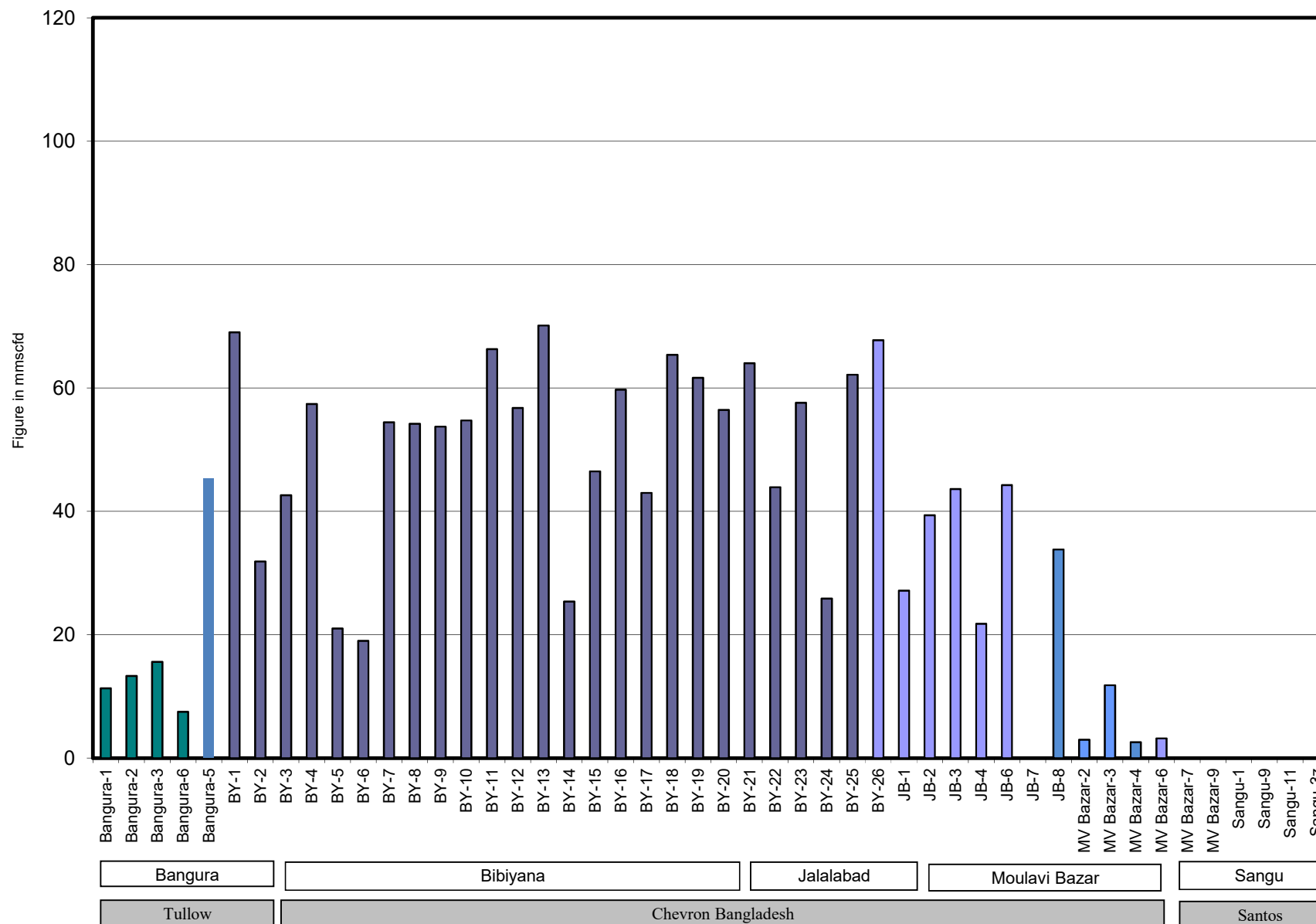


Bangladesh Gas Fields Co. Ltd. (BGFCL)

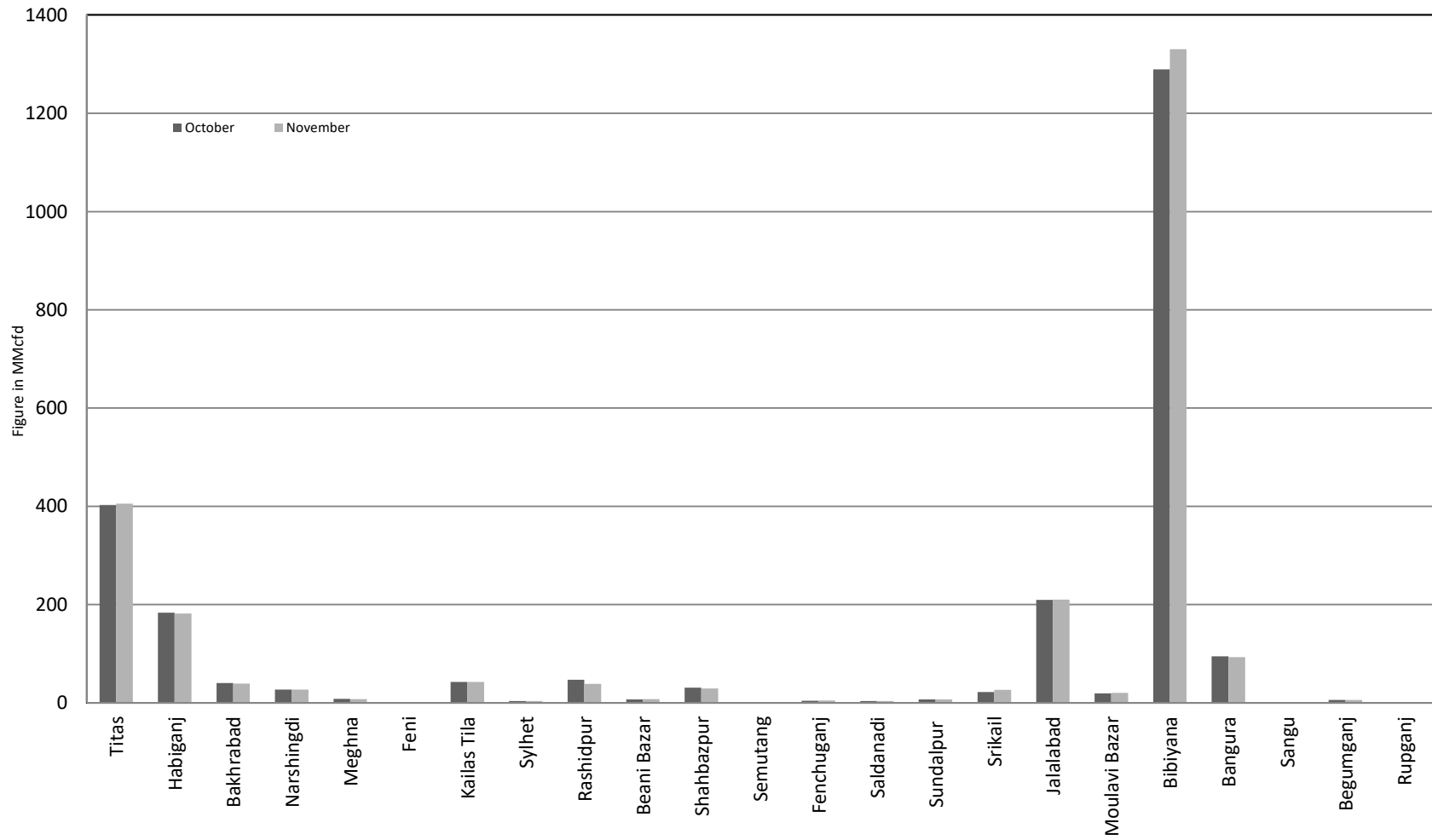
Wellwise Daily Avg. Production- Bapex and SGFL November 2020



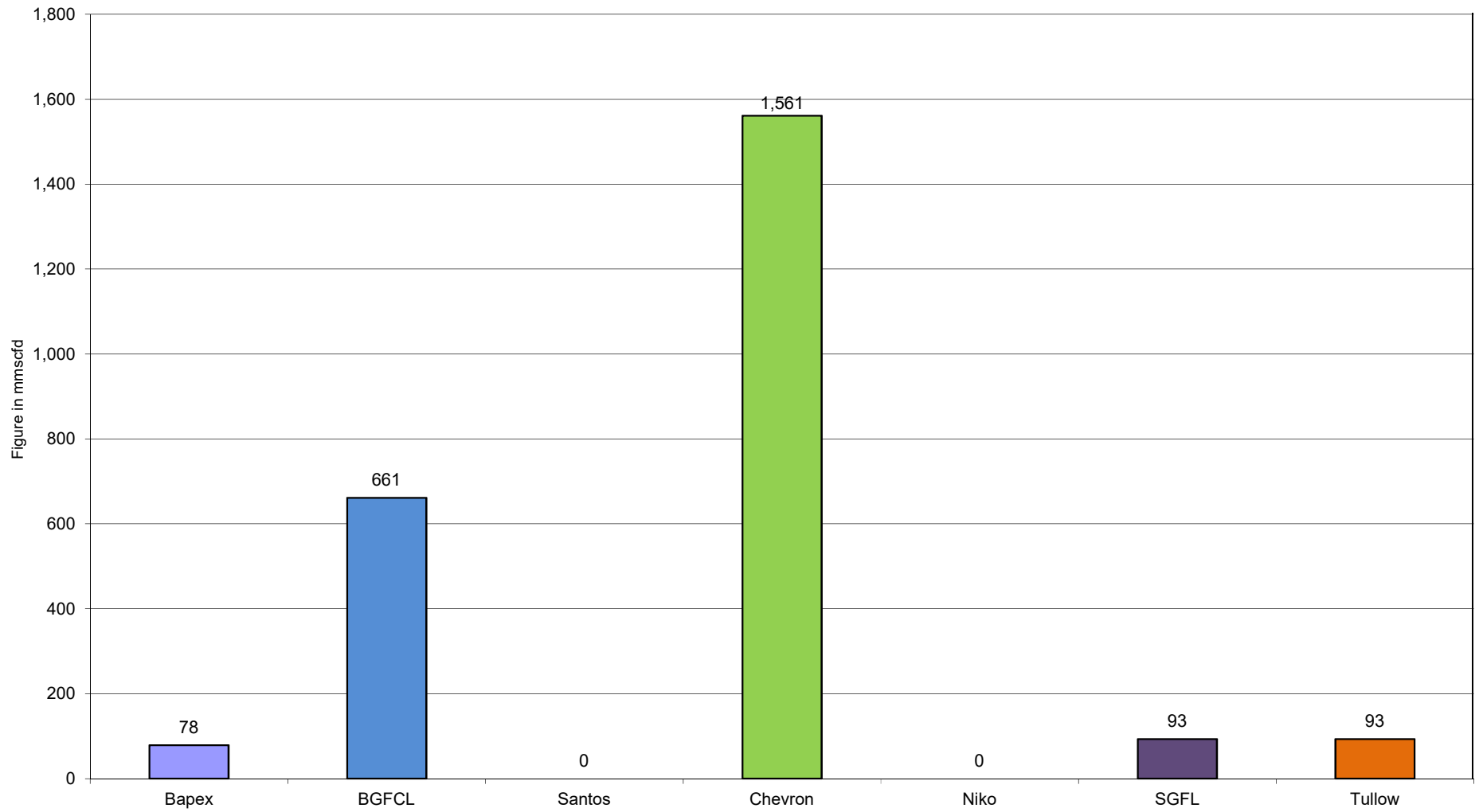
Wellwise Daily Avg. Production- IOC and JVA November 2020



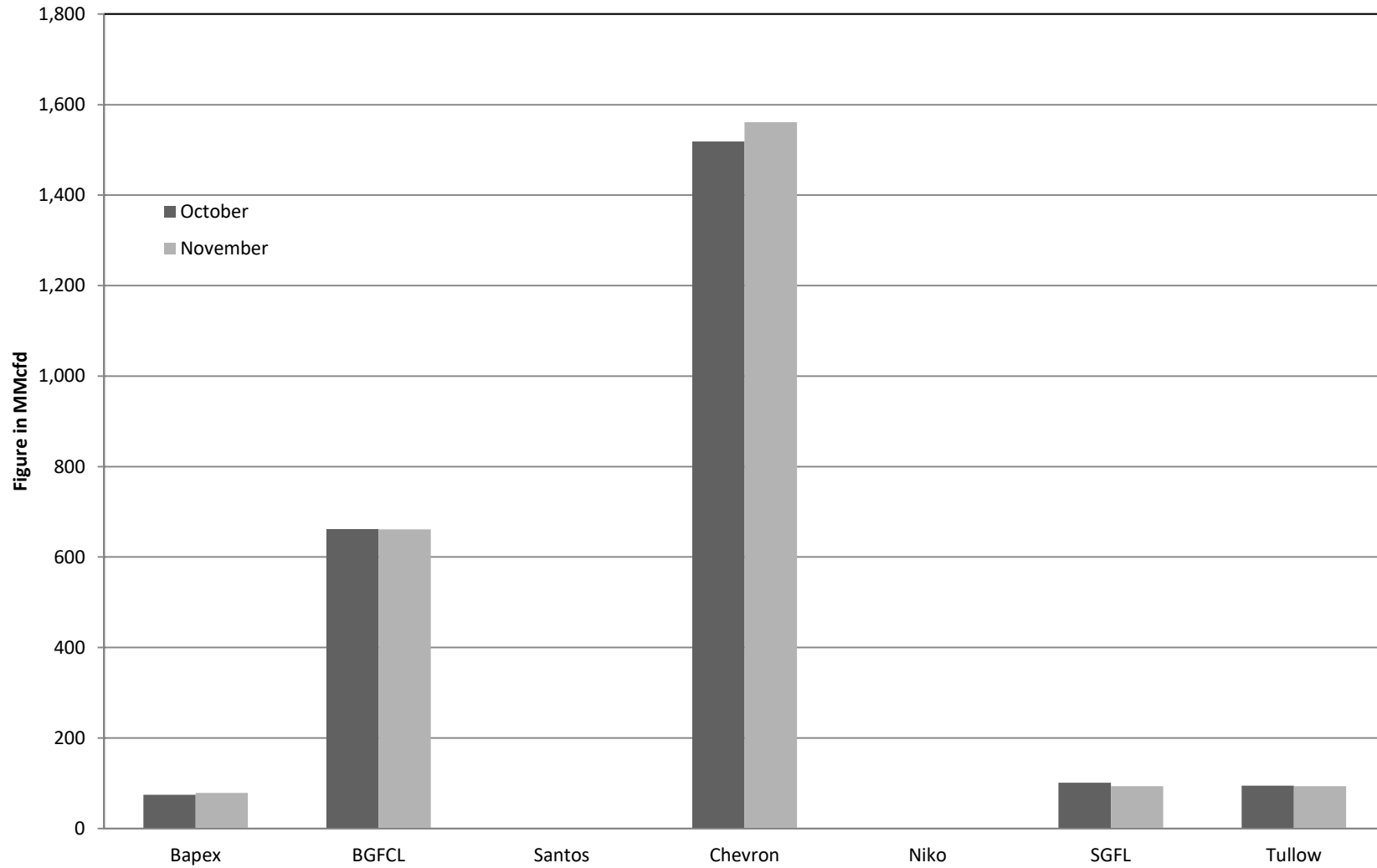
Comparison of fieldwise daily avg. Gas production between October 20 & November 20



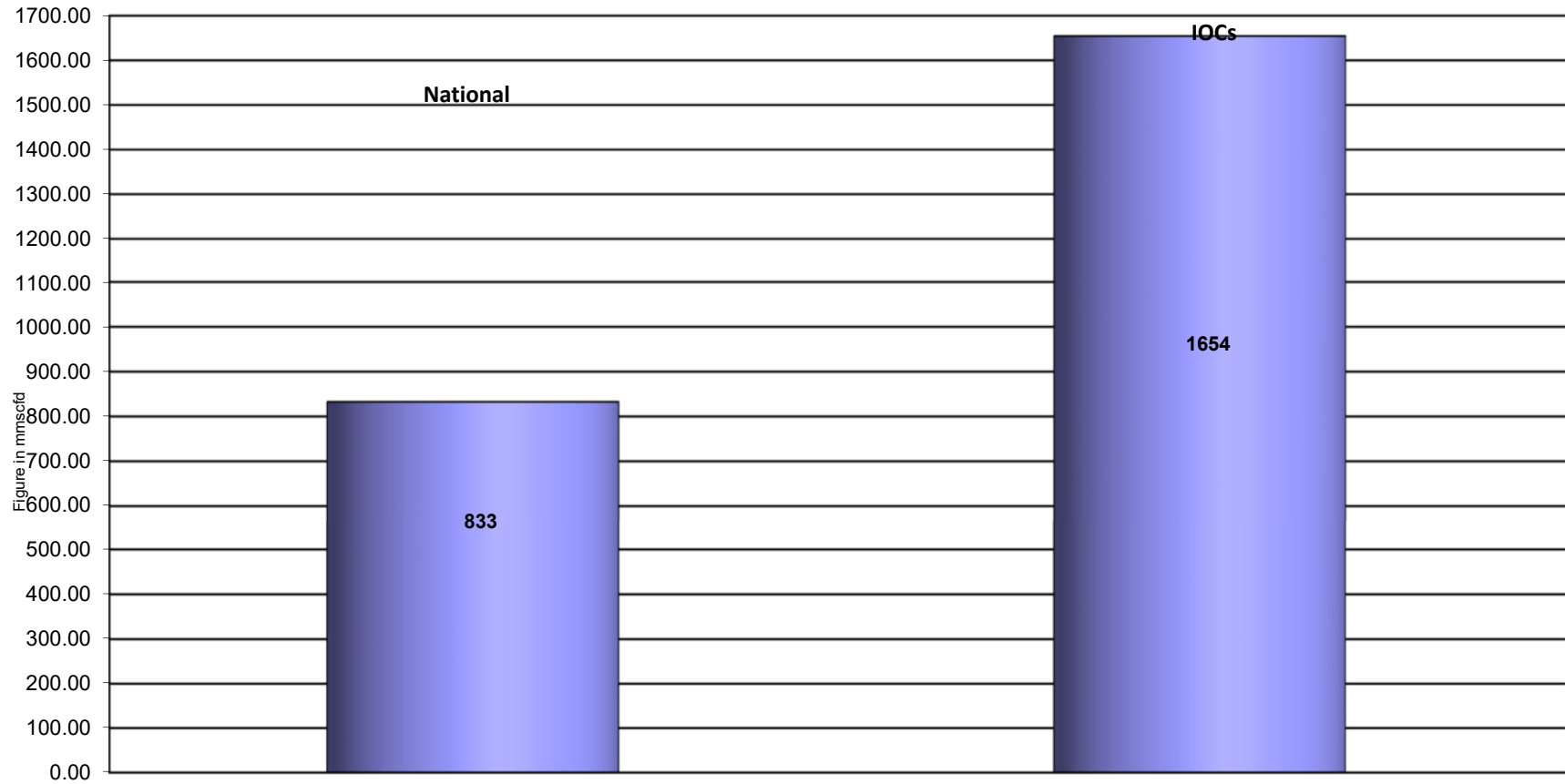
Daily Avg. Production by Operators November 2020



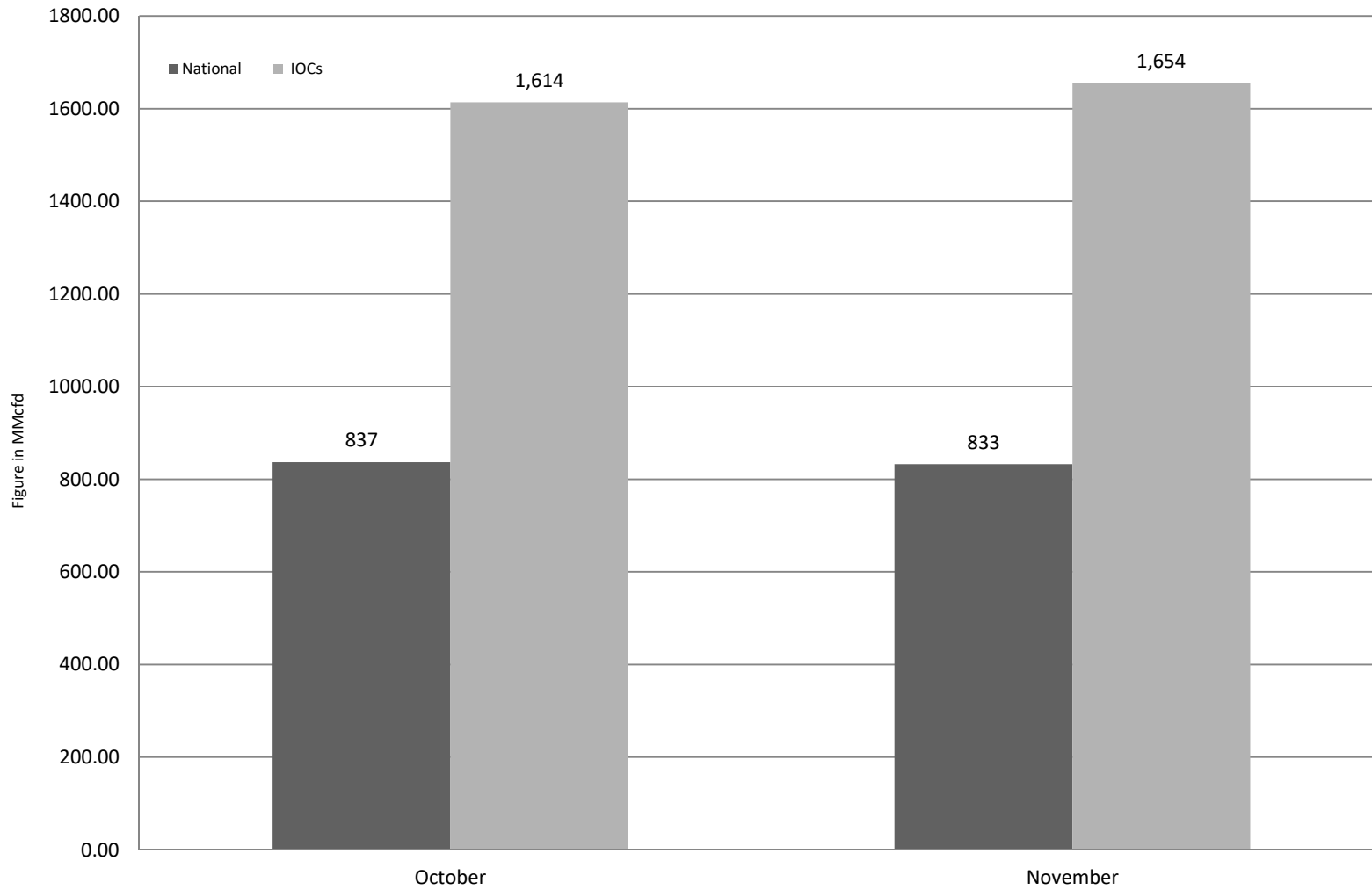
Comparison of operatorwise daily avg. Gas production between October 2020 & November 2020



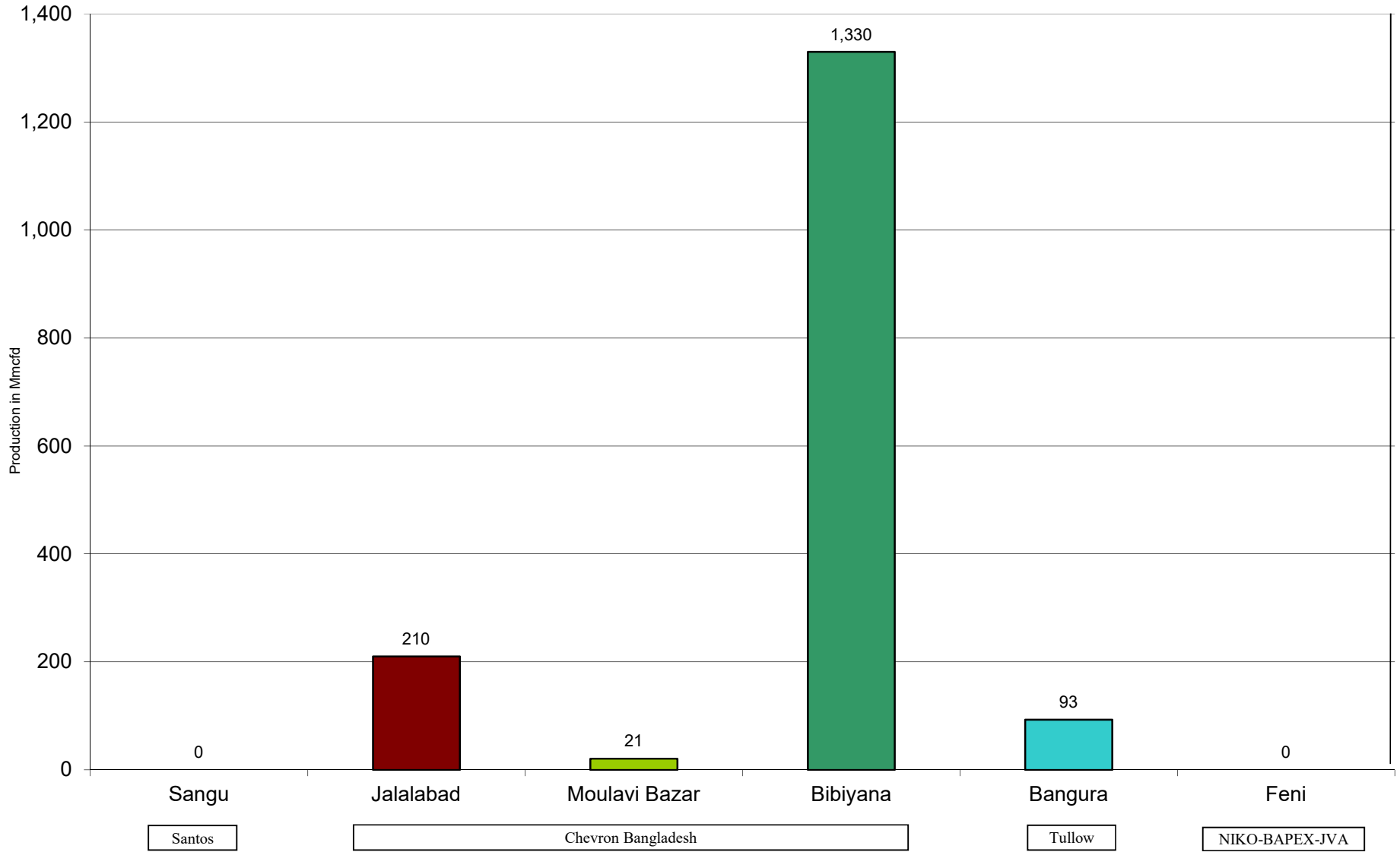
Daily Avg. Production - National Vs. IOCs November 2020



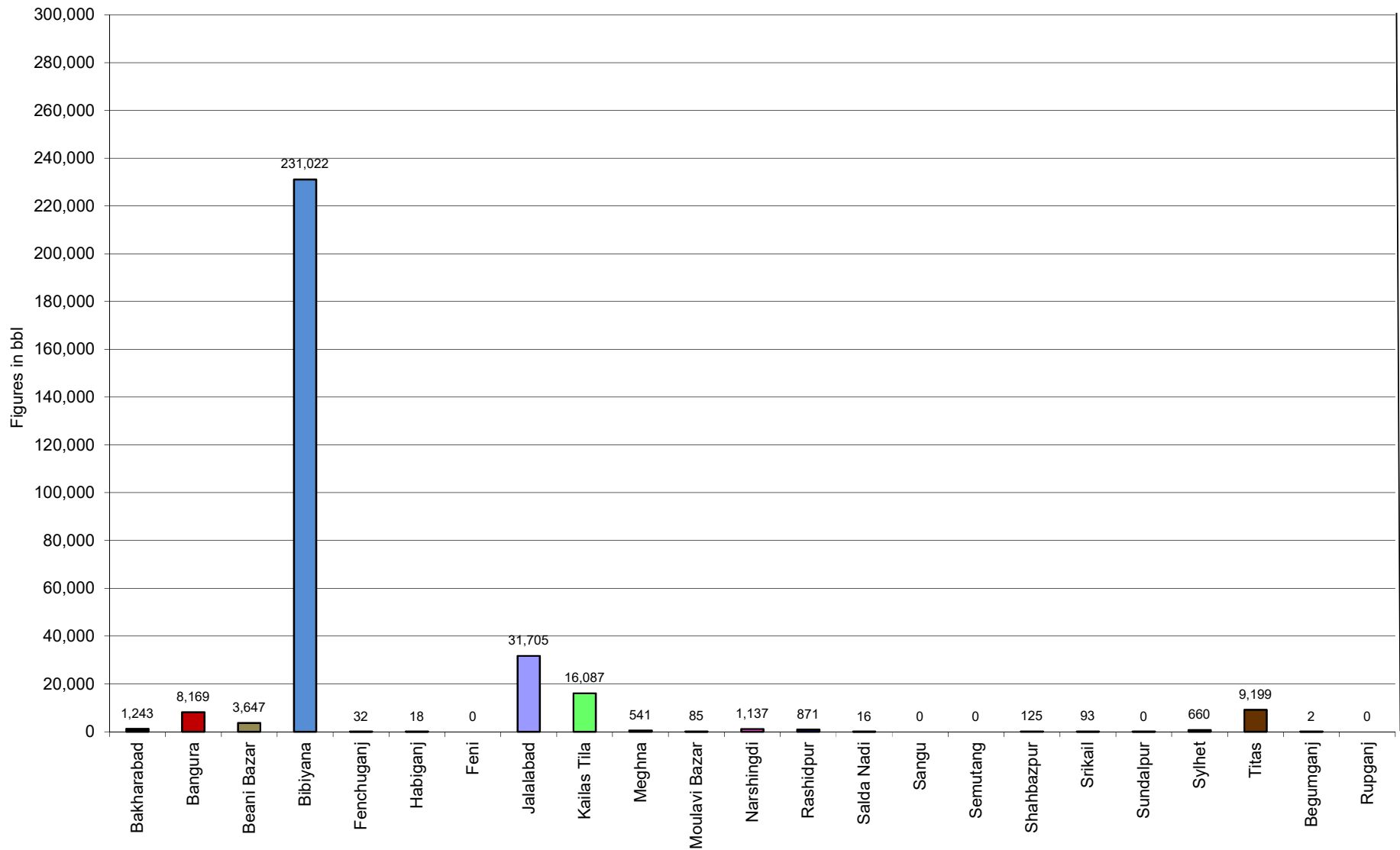
Comparison of daily avg. Gas production - National vs IOC's between October 2020 & November 2020



Daily Avg. Production - IOC and JVA November 2020



Monthly Condensate Production November 2020



Field wise Coal Reserve in Bangladesh

SI No.	Coal Basins	Proved (Mt)	Indicated (Mt)	Inferred (Mt)	Total (Mt)
1	Barapukuria	114.32	211.33	21.06+(43-64)*	346.71+(43-64)*
2	Phulbari	288	226	58	572
3	Khalashpir	-	297.57	225.92	523.49
4	Jamalganj	-	-	1053.9	1053.9
5	Dighipara	-	105	495	600
	Total	402.32	839.9	1896.88-1917.88	3139.10-3160.10

**Resources of VI Seam in second syncline are towards SW of main basin, after Wardell Armstrong*

NOTE: Reserve Figure based on Coal Sector Development Strategy (Final), HCU, PwC

Summary of Reserve and Production of Barapukuria Coal Mine As of November 2020

Coal Initially Place (Proven + Probable)	346,710 kT	346.71 MT
Total Reserve of Seam VI	285,410 kT	285.41 MT
Recoverable from Seam VI Central part(Proven + Probable)	16,540 kT*	16.54 MT
Coal Production in November 2020	51.07 kT	0.05 MT
Cumulative Production as of November 2020	11,665 kT	11.67 MT
Remaining Reserve	4,875 kT	4.87 MT

NOTE: Reserve figure based on Mines and Minerals Development Report ,HCU PwC

*Figure from BCMCL, M/S Wardell Armstrong. According to Mines and Minerals Development Report ,HCU, PwC this figure is 64.8 Mt

Barapukuria Coal Mine-MPM and P Contract (BCMCL)

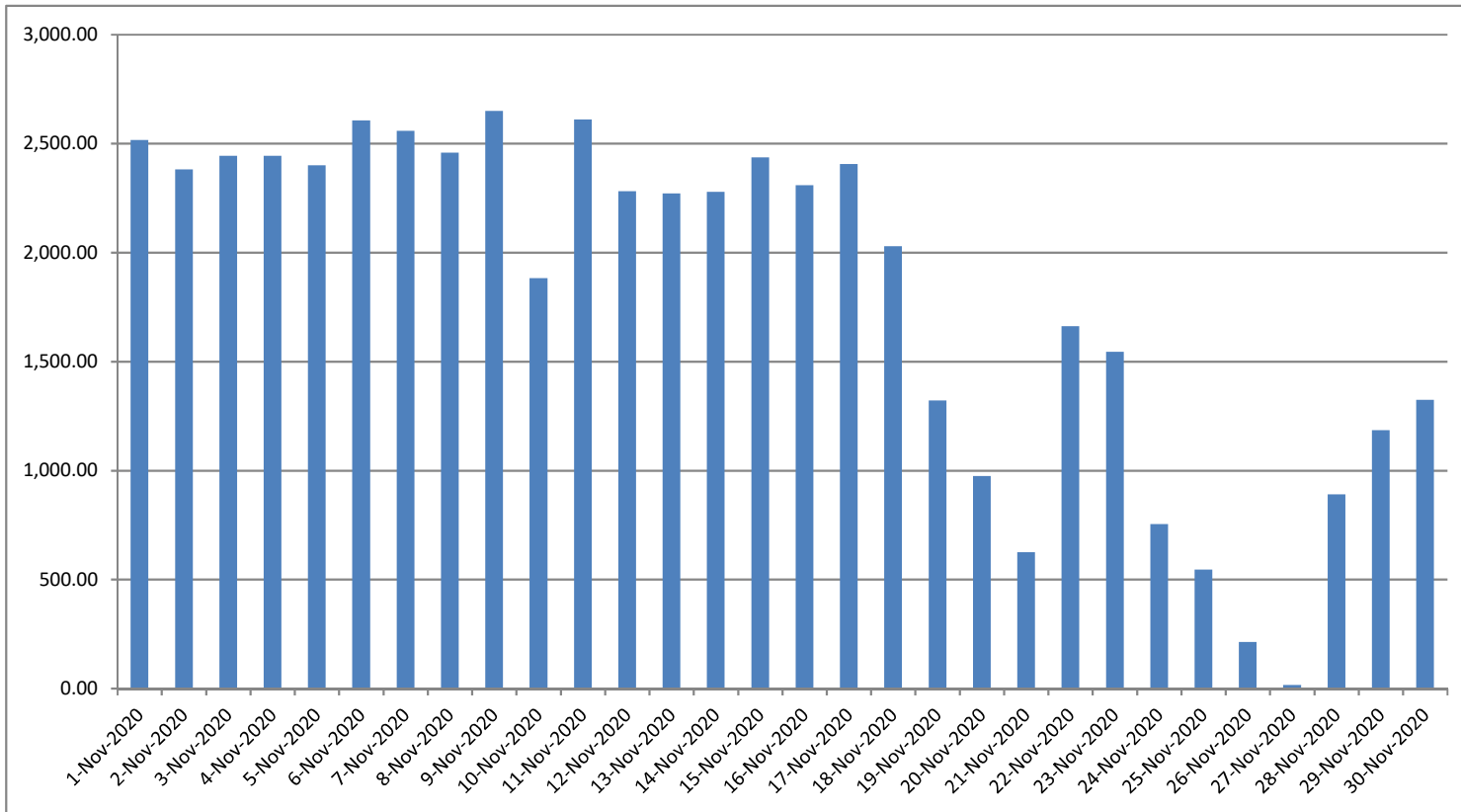
Measurement Record: Surface Belt Weigher

Measurement Period: November 2020

Day wise data	Consortium Daily Output (ton)	Consortium Cumulative Total	BCMCL Daily Output	BCMCL Cumulative Total	Remarks
1-Nov-2020	2,515.90	2,515.90	2,515.90	2,515.90	
2-Nov-2020	2,382.22	4,898.12	2,382.22	4,898.12	
3-Nov-2020	2,444.03	7,342.15	2,444.03	7,342.15	
4-Nov-2020	2,444.39	9,786.54	2,444.39	9,786.54	
5-Nov-2020	2,400.01	12,186.55	2,400.01	12,186.55	
6-Nov-2020	2,606.54	14,793.09	2,606.54	14,793.09	
7-Nov-2020	2,559.08	17,352.17	2,559.08	17,352.17	
8-Nov-2020	2,459.18	19,811.35	2,459.18	19,811.35	
9-Nov-2020	2,650.34	22,461.69	2,650.34	22,461.69	
10-Nov-2020	1,883.38	24,345.07	1,883.38	24,345.07	
11-Nov-2020	2,610.66	26,955.73	2,610.66	26,955.73	
12-Nov-2020	2,281.44	29,237.17	2,281.44	29,237.17	
13-Nov-2020	2,272.15	31,509.32	2,272.15	31,509.32	
14-Nov-2020	2,279.12	33,788.44	2,279.12	33,788.44	
15-Nov-2020	2,436.23	36,224.67	2,436.23	36,224.67	
16-Nov-2020	2,308.96	38,533.63	2,308.96	38,533.63	
17-Nov-2020	2,406.04	40,939.67	2,406.04	40,939.67	
18-Nov-2020	2,029.20	42,968.87	2,029.20	42,968.87	
19-Nov-2020	1,321.73	44,290.60	1,321.73	44,290.60	
20-Nov-2020	975.02	45,265.62	975.02	45,265.62	
21-Nov-2020	625.06	45,890.68	625.06	45,890.68	
22-Nov-2020	1,662.40	47,553.08	1,662.40	47,553.08	
23-Nov-2020	1,545.09	49,098.17	1,545.09	49,098.17	
24-Nov-2020	754.21	49,852.38	754.21	49,852.38	
25-Nov-2020	545.56	50,397.94	545.56	50,397.94	
26-Nov-2020	213.76	50,611.70	213.76	50,611.70	
27-Nov-2020	16.55	50,628.25	16.55	50,628.25	
28-Nov-2020	890.64	51,518.89	890.64	51,518.89	
29-Nov-2020	1,184.99	52,703.88	1,184.99	52,703.88	
30-Nov-2020	1,324.15	54,028.03	1,324.15	54,028.03	

less Difference in Water Content:	2955.01
Less Out of Seam dilution:	0
Coal adjustment for scale recalibration	0
Output (tons) measured by Belt Weigher:	51,073.02
Tonnes mined in DARR	0
Net Output after removing DARR	51,073.02

Barapukuria Coal Mine Daywise Data Graph for November 2020



আসুন, যানবাহনসমূহকে অটোগ্যাসে রূপান্তর করি...

জাতীয় সম্পদ প্রাকৃতিক গ্যাস সাশ্রয় করি...

facebook

"Energy misused, cannot be excused"

আমাদের ঘরে যদি এখনো কয়েল স্টার্টার যুক্ত টিউবলাইট থেকে থাকে, আসুন আজই LED টিউবলাইট দ্বারা প্রতিস্থাপন করি।

HYDROCARBON UNIT ON FACEBOOK

“আসুন আমাদের জাতীয় সম্পদ প্রাকৃতিক গ্যাস সাশ্রয় করি”

১। **LPG** ব্যবহার করুন..

অবৈধ গ্যাস সংযোগ থেকে বিরত থাকুন

২। **CNG** নয়, অকটেন দিয়ে গাড়ি চালান...

গাড়ির ইঞ্জিনের আয়ুষ্কাল বাড়ান

চলুন আজই যানবাহনসমূহ AUTO GAS (LPG) এ রূপান্তর করি...

- * CNG এর তুলনায় LPG কনভারশনে ৫০% কম খরচ হয়
- * ৩-৫ মিনিটে ট্যাংকে ফুয়েল ভর্তি হয়, লম্বা লাইনে দাঁড়িয়ে অপেক্ষা করার প্রয়োজন পরে না
- * CNG এর তুলনায় সিলিন্ডারে জায়গা, ওজন ও প্রেশার কম দরকার
- * রক্ষণাবেক্ষণের খরচ কম
- * পেট্রলের তুলনায় AUTO GAS -এ খরচ প্রায় ৫০% কম
- * গ্যাসোলিন ও ডিজেলের তুলনায় নিঃসরণ কম

Hydrocarbon Unit

Energy & Mineral Resources Division
Ministry of Power, Energy & Mineral Resources
153, Pioneer Road
Segunbagicha, Dhaka-1000
www.hcuro.gov.bd