

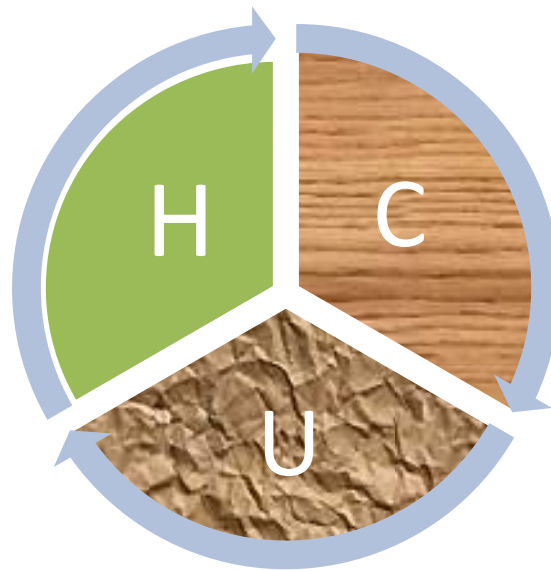


# HYDROCARBON UNIT

Energy and Mineral Resources Division

## Gas and Coal Reserve & Production

October 2019



## Gas Reserve & Production at a glance

Gas Initially in Place (GIIP)	:	35,796.19 Bcf
Recoverable (2P)	:	28,685.40 Bcf
Cumulative Production as of October 2019	:	17,222.63 Bcf
Remaining Reserve up to October 2019	:	11,462.77 Bcf
Gas Production in October 2019	:	79.32 Bcf
National Oil Company (NOC's) production in October 2019	:	30.19 Bcf
International Oil Company (IOC's) production in October 2019	:	49.14 Bcf
No. of National Oil Company (NOC's) in October 2019	:	3 (BGFL, BAPLEX, SGFL)
No. of International Oil Company (IOC's) in October 2019	:	2 (Chevron, Tullow)
Total gas fields of National Oil Company(NOC) in October 2019	:	21
Total gas fields of International Oil Company(IOC) in October 2019	:	5
Total gas wells of National Oil Company(NOC) in October 2019	:	115
Total gas wells of International Oil Company(IOC) in October 2019	:	60
No. of National Oil Company (NOC's) gas production well in October 2019	:	70
No. of International Oil Company (IOC's) gas production well in October 2019	:	42
No. of National Oil company(NOC's) suspended well in October 2019	:	45
No. of International Oil company(IOC's) suspended well in October 2019	:	18
Total LNG Import in October 2019	:	17.36 Bcf
Cumulative LNG Import till October 2019	:	183.38 Bcf

## Executive Summary of October 2019

Total gas and condensate Production in October 2019 were 79.32 Bcf and 336476.75 Bbl. In the previous month i.e. September 2019, gas and condensate production was 78.40 Bcf and 331247.25 Bbl and in the same month of the previous year i.e. October 2018, total gas and condensate production was 84.16 Bcf and 355627.20 Bbl respectively. The National Oil Companies (NOC's) and International Oil Companies (IOC's) Produced 30.19 Bcf and 49.14 Bcf gas respectively in October 2019. During the previous month i.e. September 2019, gas production by the National Oil Companies (NOC's) and International Oil Companies (IOC's) were 29.81 Bcf and 49.14 Bcf respectively. In the month of October 2019, Bibiyana gas field Produced 39.50 Bcf gas and it ranked top among the gas producers. It is noted that Bibiyana gas field Produced 38.81 Bcf in September 2019. Average production from the field during the month of October 2019 was 1274.19 Mmcf/d.

During the month of October 2019 total production of condensate was 336476.75 Bbl compared to 331247.25 Bbl in the previous month i.e. September 2019. Bibiyana gas field Produced 259451.81 Bbl condensate and ranked top while Jalalabad ranked 2<sup>nd</sup> by producing 27846.56 Bbl.

In the month of October 2019 total coal production was 3,457.12 Ton. In the previous month i.e. September 2019 total coal production was 80,801.46 Ton. It indicates that 77,344.34 Ton less Coal was produced compared to previous month.

Total LNG import in October 2019 was 17.36 Bcf. As a result, cumulative LNG import stands on 183.38 Bcf till October 2019.

## **Table of Contents**

<b>Gas Report</b>	<b>Page No.</b>
Summary	1
summary of Reserve and Production	2
Production comparison between September 2019 & October 2019	3
Production per well & production reserve ratio	4
Monthly Production by Fields & Wells up to October 2019	5-12
Monthly Condensate Production by Fields up to October 2019	13-14
Monthly Water Production by Fields from October 2019	15-16
Conditions of Field and Well up to October 2019	17-21
<b>Chart</b>	
Well-wise Production of All fields in 2018-19	22
Reserve, Production and Remaining Reserve as of October 2019	23
Daily Average Gas Production from January 2012 to October 2019	24
Field wise Daily Average Production as of October 2019	25
Well wise Daily Average Production-BGFCL as of October 2019	26
Well wise Daily Average Production-BAPEX and SGFL, October 2019	27
Well wise Daily Average Production-IOC and JVA, October 2019	28
Comparison of Field wise Avg Gas Production between September 19 & October 19	29
Daily Average Production by Operator, October 2019	30
Comparison of Operator wise daily avg Production between September 19 & October 19	31
Daily Average Production – National vs IOC's, October 2019	32
Daily avg Gas Production- National vs IOC's between September 19 & October 19	33
Daily Average Production IOC's and JVA, October 2019	34
Monthly Condensate Production, October 2019	35
<b>Coal Report</b>	
Summary	36-37
Barapukuria Coal Mine-MPM and P Contract (BCMCL)	38
Barapukuria Coal Mine Day wise Data Graph for October 2019	39

## Summary of Reserve, Production & Import As of 31 October 2019

<b>Gas Initially Place (Proven + Probable)</b>	<b>35,796.19 Bcf</b>	<b>35.80 Tcf</b>
<b>Recoverable (Proven + Probable)</b>	<b>28,685.40 Bcf</b>	<b>28.69 Tcf</b>
<b>Gas Production in October 2019</b>	<b>79.32 Bcf</b>	<b>0.08 Tcf</b>
<b>Cumulative Gas Production as of October 2019</b>	<b>17,222.63 Bcf</b>	<b>17.22 Tcf</b>
<b>Remaining Reserve</b>	<b>11,462.77 Bcf</b>	<b>11.46 Tcf</b>

*NOTE: Reserve figure based on "Updated Report on Bangladesh Gas Reserve Estimation 2010", prepared by Gustavson Associates LLC, USA*

<b>Total LNG Import in October 2019</b>	<b>17.36 Bcf</b>	<b>0.02 Tcf</b>
<b>Cumulative LNG Import till October 2019</b>	<b>183.38 Bcf</b>	<b>0.18 Tcf</b>

# Summary of Reserve and Production

(As of October 2019)

Gas Bcf



SI No.	Field	2P	GIIP	2P Reserve	Gas Prod. In Oct '19	Cum. Gas Production	Remaining Reserve	Cum. Condensate Production
1	Begumganj		47.0	33.0	0.2	3.3	29.7	1
2	Shahbazpur		415.0	261.0	1.8	57.2	203.8	8
3	Semutang		654.0	318.0	0.0	13.3	304.7	5
4	Fenchuganj		483.0	329.0	0.1	160.1	168.9	116
5	Salda Nadi		393.0	275.0	0.2	92.6	182.4	59
6	Srikail*		230.0	161.0	1.0	91.5	69.5	157
7	Sundalpur *		62.2	50.2	0.2	14.1	36.1	1
8	Rupganj		48.0	33.6	0.0	0.7	32.9	1
<b>Bapex</b>			<b>2,332.2</b>	<b>1,460.8</b>	<b>3.5</b>	<b>432.8</b>	<b>1,028.0</b>	<b>347</b>
9	Meghna		122.0	101.0	0.3	71.9	29.1	113
10	Narshingdi		405.0	345.0	0.8	207.8	137.2	429
11	Kamta		72.0	50.0	0.0	21.1	28.9	4
12	Habiganj		3,981.0	2,787.0	5.9	2,489.1	297.9	136
13	Bakhrabad		1,825.0	1,387.0	1.3	823.0	564.0	1,026
14	Titas		9,039.0	7,582.0	14.4	4,796.8	2,785.2	5,341
<b>BGFCL</b>			<b>15,444.0</b>	<b>12,252.0</b>	<b>22.6</b>	<b>8,409.8</b>	<b>3,842.2</b>	<b>7,050</b>
15	Sangu		976.0	771.0	0.0	489.5	281.5	37
<b>Santos/Cairn</b>			<b>976.0</b>	<b>771.0</b>	<b>0.0</b>	<b>489.5</b>	<b>281.5</b>	<b>37</b>
16	Bibiyana		5,321.0	4,532.0	39.5	3,976.2	555.8	23,749
17	Moulavi Bazar		630.0	494.0	0.5	327.2	166.8	118
18	Jalalabad**		1,346.0	1,346.0	6.5	1,342.9	3.1	10,399
<b>Chevron</b>			<b>7,297.0</b>	<b>6,372.0</b>	<b>46.5</b>	<b>5,646.4</b>	<b>725.6</b>	<b>34,265</b>
19	Feni		185.0	130.0	0.0	63.0	67.0	110
<b>Niko</b>			<b>185.0</b>	<b>129.6</b>		<b>63.0</b>	<b>66.6</b>	<b>110</b>
20	Kailas Tila		3,463.0	2,880.0	1.8	745.1	2,134.9	7,939
21	Sylhet		580.0	408.0	0.1	215.4	192.6	804
22	Rashidpur		3,887.0	3,134.0	1.5	642.6	2,491.4	789
23	Chattak		677.0	474.0	0.0	25.8	448.2	4
24	Beani Bazar		225.0	137.0	0.3	97.8	39.2	1,609
<b>SGFL</b>			<b>8,832.0</b>	<b>7,033.0</b>	<b>3.7</b>	<b>1,726.8</b>	<b>5,306.2</b>	<b>11,145</b>
25	Bangura		730.0	621.0	3.1	454.4	166.6	1,151
<b>Tullow</b>			<b>730.0</b>	<b>621.0</b>	<b>3.1</b>	<b>454.4</b>	<b>166.6</b>	<b>1,151</b>
26	Kutubdia		65.0	46.0	0.0	0.0	46.0	0
<b>Total</b>			<b>35,796.2</b>	<b>28,685.4</b>	<b>79.32</b>	<b>17,222.6</b>	<b>11,462.8</b>	<b>54,106</b>

\* Preliminary reserve estimated by BAPEX

\*\* 2P reserve estimation by Petrobangla has crossed the limit. So 2P reserve is estimated as GIIP reserve now.

## Production comparison between September'19 & October'19



SI No.	Field	Gas Prod. (MMcf) in Sept'19	Daily Avg. (MMcfd) in Sept'19	Gas Prod. (MMcf) in Oct'19	Daily Avg. (MMcfd) in Oct'19
1	Begumganj	170	6	173	6
2	Shahbazpur	1780	59	1763	57
3	Semutang	29	1	31	1
4	Fenchuganj	124	4	113	4
5	Salda Nadi	186	6	173	6
6	Srikail	981	33	1004	32
7	Sundalpur	210	7	219	7
8	Rupganj	0	0	0	0
<b>Bapex</b>		<b>3481</b>	<b>116</b>	<b>3477</b>	<b>112</b>
9	Meghna	255	9	262	8
10	Narshingdi	806	27	821	26
11	Kamta	0	0	0	0
12	Habiganj	5662	189	5855	189
13	Bakhrabad	1247	42	1290	42
14	Titas	14184	473	14360	463
<b>BGFCL</b>		<b>22154</b>	<b>738</b>	<b>22588</b>	<b>729</b>
15	Sangu	0	0	0	0
<b>Santos/Cairn</b>		<b>0</b>	<b>0</b>	<b>0</b>	<b>0</b>
16	Bibiyana	38810	1294	39496	1274
17	Moulavi Bazar	624	21	463	15
18	Jalalabad	6724	224	6545	211
<b>Chevron</b>		<b>46159</b>	<b>1539</b>	<b>46504</b>	<b>1500</b>
19	Feni	0	0	0	0
<b>Niko</b>		<b>0</b>	<b>0</b>	<b>0</b>	<b>0</b>
20	Kailas Tila	1741	58	1782	57
21	Sylhet	109	4	113	4
22	Rashidpur	1438	48	1498	48
23	Chattak	0	0	0	0
24	Beani Bazar	256	9	264	9
<b>SGFL</b>		<b>3545</b>	<b>118</b>	<b>3658</b>	<b>118</b>
25	Bangura	3061	102	3095	100
<b>Tullow</b>		<b>3061</b>	<b>102</b>	<b>3095</b>	<b>100</b>
26	Kutubdia	0	0	0	0
		<b>0</b>	<b>0</b>	<b>0</b>	<b>0</b>
<b>Total</b>		<b>78400</b>	<b>2613</b>	<b>79322</b>	<b>2559</b>

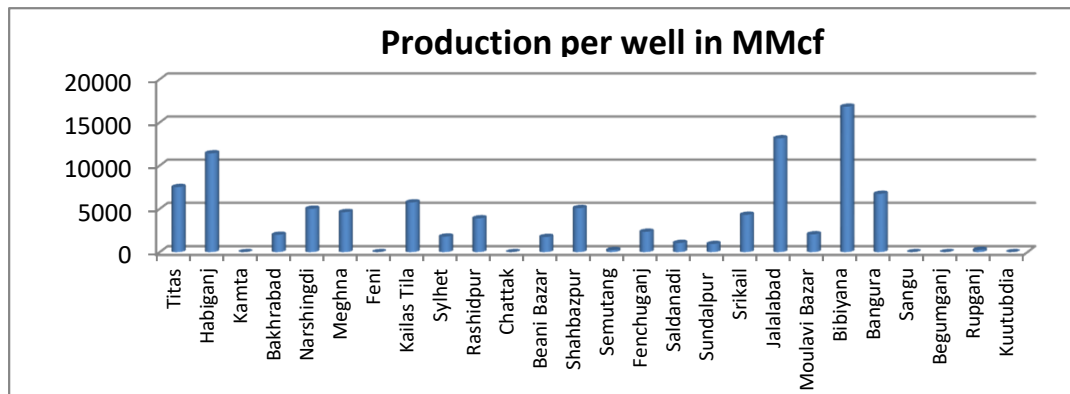
## Production per well & production reserve ratio



**HYDROCARBON UNIT**

Energy & Mineral Resources Division

	No of production well	Total 2p- Recoverable	2018-19 production	production per well mmcf	production reserve ratio
Titas	26	7582	183.36	7052.31	0.024
Habiganj	8	2787	79.21	9901.25	0.028
Kamta	0	50	0	0.00	0.000
Bakhrabad	7	1387	11	1571.43	0.008
Narshingdi	2	345	9.95	4975.00	0.029
Meghna	1	101	4.12	4120.00	0.041
Feni	0	130	0	0.00	0.000
Kailas Tila	4	2880	22.87	5717.50	0.008
Sylhet	1	408	1.5	1500.00	0.004
Rashidpur	5	3134	18.6	3720.00	0.006
Chattak	0	474	0	0.00	0.000
Beani Bazar	1	137	3.21	3210.00	0.023
Shahbazpur	4	261	20.35	5087.50	0.078
Semutang	2	318	0.28	140.00	0.001
Fenchuganj	2	329	3.41	1705.00	0.010
Saldanadi	2	275	1.56	780.00	0.006
Sundalpur	1	50.2	2.52	2520.00	0.050
Srikail	3	161	12.45	4150.00	0.077
Jalalabad	7	1346	84.14	12020.00	0.063
Moulavi Bazar	4	494	7.87	1967.50	0.016
Bibiyana	26	4532	463.74	17836.15	0.102
Bangura	5	621	32.89	6578.00	0.053
Sangu	0	771	0	0.00	0.000
Begumganj	1	33	1.71	0.00	0.052
Rupganj	0	33.6	0	0.00	0.000
Kuutubdia	0	46	0	0.00	0.000
<b>Total</b>	<b>112</b>	<b>28685.8</b>	<b>964.74</b>	<b>8613.75</b>	<b>0.034</b>





## Monthly Production by Field and Well upto October- 2019



**HYDROCARBON UNIT**  
Energy & Mineral Resources Division

Figures in mmscf

Well	Jan	Feb	Mar	Apr	May	Jun	Jul	Aug	Sep	Oct	Nov	Dec	Total	Cumulative	2018	2017	2016	Cumulative 2018
<b>Field : Bakharabad</b>																		
BKB-1	0	0	0	0	243	448	461	434	421	434			2,441	143,608	0	0	0	141,167
BKB-2	34	32	37	36	38	34	29	30	28	28			325	86,896	445	543	731	86570.8041
BKB-3	154	151	154	152	149	142	151	148	136	141			1,479	162,324	1,989	2,249	2,223	160,845
BKB-4	0	0	0	0	0	0	0	0	0	0			0	55,872				55872
BKB-5	155	140	154	146	141	140	145	151	144	149			1,465	60,277	1,822	1,847	1,814	58811.2039
BKB-6	0	0	0	0	0	0	0	0	0	0			0	50,069	0			50069
BKB-7	0	0	0		0	0	0	0	0	0			0	107,750	0	0	0	107,750
BKB-8	158	170	214	230	214	206	237	231	223	230			2,112	128,373	2,017	3,462	4,142	126,261
BKB-9	251	229	248	242	215	170	189	207	204	216			2,172	23,294	3,332	3,637	4,160	21,122
BKB-10	98	84	91	89	94	90	93	93	90	93			914	4,588	1,297	1,453	924	3,674
<b>Field Total:</b>	<b>852</b>	<b>807</b>	<b>898</b>	<b>894</b>	<b>1,094</b>	<b>1,229</b>	<b>1304</b>	<b>1,293</b>	<b>1,247</b>	<b>1,290</b>	<b>0</b>	<b>0</b>	<b>10,909</b>	<b>823,050</b>	<b>10,903</b>	<b>13,190</b>	<b>13,070</b>	<b>812,141</b>
<b>Daily Avg.(mmscfd)</b>	27	29	29	30	35	41	42	42	42	42	0	0	36		30	36	36	
<b>Field : Bangura</b>																		
Bangura-1	384	343	377	363	368	354	347	300	321	329			3,487	92,741	4,615	4,914	4,886	89,254
Bangura-2	504	437	472	469	458	442	451	389	415	428			4,465	84,003	6,802	7,837	9,200	79,538
Bangura-3	601	516	563	544	544	470	542	424	498	499			5,201	101,928	7,265	8,662	10,038	96,727
Bangura-6	343	306	319	320	312	268	311	243	286	270			2,979	11,926	4,847	4,100		8,947
Bangura-5	1,212	1,087	1,200	1,153	1,182	1,197	1,540	1,370	1,541	1,569			13,050	163,793	8,410	9,699	11,514	150,743
<b>Field Total:</b>	<b>3,044</b>	<b>2,690</b>	<b>2,931</b>	<b>2,848</b>	<b>2,864</b>	<b>2,732</b>	<b>3191</b>	<b>2,726</b>	<b>3,061</b>	<b>3,095</b>	<b>0</b>	<b>0</b>	<b>29,182</b>	<b>454,391</b>	<b>31,940</b>	<b>35,212</b>	<b>35,639</b>	<b>425,208</b>
<b>Daily Avg.(mmscfd)</b>	98	96	95	95	92	91	103	88	102	100	0	0	96		88	96	98	
<b>Field : Beani Bazar</b>																		
BB-1	0	0	0	0	0	0	0	0	0	0	0	0	0	35,481	0	1,023	33	35481
BB-2	274	239	266	256	269	259	266	264	256	264			2,614	62,350	3,276	3,282	3,431	59736
<b>Field Total:</b>	<b>274</b>	<b>239</b>	<b>266</b>	<b>256</b>	<b>269</b>	<b>259</b>	<b>266</b>	<b>264</b>	<b>256</b>	<b>264</b>	<b>0</b>	<b>0</b>	<b>2,614</b>	<b>97,831</b>	<b>3,276</b>	<b>4,306</b>	<b>3,464</b>	<b>95217</b>
<b>Daily Avg.(mmscfd)</b>	9	9	9	9	9	9	9	9	9	9	0	0	9		9	12	9	
<b>Field : Bibiyana</b>																		
BY-1	2,554	2,149	2,272	2493	2,668	1,827	2452	2,164	2,653	2,540			23,771	391,656	21,743	35,595	35,050	367885
BY-2	1,632	1,327	1,573	1544	1,560	1,363	1451	1,251	1,402	1,404			14,509	288,935	21,388	23,957	20	274427
BY-3	737	608	567	549	526	519	218	4	4	21			3,753	239,022	6,249	9,904	16,873	235269
BY-4	1,865	1,587	1,790	1921	2,125	1,896	2227	1,965	2,257	2,317			19,950	200,488	28,559	6,571	7,322	180538
BY-5	762	698	718	297	668	527	514	434	616	603			5,838	177,805	6,131	8,117	9,229	171967
BY-6	792	617	771	809	937	623	736	733	809	862			7,688	229,183	11,057	11,879	15,208	221496
BY-7	2,548	2,171	2,391	2190	2,322	1,904	2325	1,988	2,182	2,166			22,187	266,771	23,155	32,874	33,040	244583
BY-8	768	713	753	777	761	802	815	840	776	827			7,833	142,076	8,921	12,486	2,987	134243
BY-9	553	482	359	476	484	488	454	484	472	499			4,751	129,369	4,093	6,247	6,820	124617

## Monthly Production by Field and Well upto October- 2019



Figures in mmscf

Well	Jan	Feb	Mar	Apr	May	Jun	Jul	Aug	Sep	Oct	Nov	Dec	Total	Cumulative	2018	2017	2016	Cumulative 2018
BY-10	2,106	1,752	2,357	2244	2,233	1,901	2227	2,100	2,104	2,154			21,177	356,175	30,954	32,967	33,582	334997
BY-11	797	626	657	818	861	727	836	678	868	912			7,778	127,739	12,147	6,813	9,357	119961
BY-12	2,162	2,177	2,205	2245	2,280	2,173	2333	2,358	2,223	2,241			22,397	145,100	6,835	8,284	10,574	122703
BY-13	959	569	880	798	950	905	963	883	902	933			8,742	81,701	13,171	11,842	15,603	72959
BY-14	800	730	845	666	777	660	721	670	747	748			7,363	97,977	11,523	15,354	15,170	90613
BY-15	1,829	1,420	1,646	1693	2,124	1,806	2051	1,817	1,767	1,847			18,000	114,921	24,295	19,111	17,698	96921
BY-16	908	823	806	741	807	792	877	896	831	862			8,345	69,417	9,264	12,541	15,844	61072
BY-17	1,794	1,176	1,440	1496	1,576	1,726	1770	1,265	1,477	1,591			15,310	93,182	17,603	15,412	15,463	77871
BY-18	2,784	2,387	2,668	2541	2,546	2,204	2489	2,494	2,351	2,387			24,853	142,655	31,890	29,509	33,072	117802
BY-19	1,761	2,275	2,368	2362	2,407	2,003	2354	2,359	2,173	2,261			22,322	54,400	8,144	9,859	9,383	32078
BY-20	1,636	2,008	2,113	2176	1,384	1,106	1748	1,818	2,000	2,126			18,117	55,963	7,840	6,533	9,282	37845
BY-21	634	531	656	671	719	649	723	577	716	756			6,631	41,855	9,670	13,246	8,533	35224
BY-22	1,742	1,310	1,480	1517	1,833	1,403	1736	1,629	1,664	1,675			15,989	123,788	24,755	27,093	33,387	107799
BY-23	2,261	1,781	2,212	2100	2,190	1,731	2144	2,025	2,210	2,099			20,753	72,800	32,043	15,333	4,405	52047
BY-24	870	712	824	826	830	850	833	787	885	904			8,322	66,486	13,268	13,484	15,265	58164
BY-25	2,070	2,145	2,340	2229	2,396	1,836	2308	2,152	2,251	2,267			21,994	127,174	28,306	30,331	33,282	105180
BY-26	2,683	2,344	2,465	2318	2,524	1,885	2467	2,370	2,471	2,491			24,017	139,583	33,853	30,446	33,167	115565
<b>Field Total:</b>	<b>40006</b>	<b>35117</b>	<b>39154</b>	<b>38499</b>	<b>40489</b>	<b>34306</b>	<b>39773</b>	<b>36741</b>	<b>38810</b>	<b>39496</b>	<b>0</b>	<b>0</b>	<b>382,393</b>	<b>3,976,221</b>	<b>446,855</b>	<b>445,787</b>	<b>439,615</b>	<b>3593828</b>
<b>Daily Avg.(mmscfd)</b>	1291	1254	1263	1283	1306	1144	1283	1,185	1,294	1,274	0	0	1,258		1,224	1,221	1,204	
<b>Field :</b>	<b>Chattak</b>																	
Ch-1	Production Suspended													25,834		25834		
<b>Field Total:</b>	<b>0</b>													<b>25,834</b>		<b>25834</b>		
<b>Daily Avg.(mmscfd)</b>	<b>0</b>													<b>0</b>		<b>0</b>		
<b>Field :</b>	<b>Fenchuganj</b>																	
Fenchuganj-2	0	0	0	0	0	0	0	0	0	0			0	38,169	0	0	0	38168.5464
Fenchuganj-3	274	203	225	217	145	129	174	121	103	102			1,693	92,331	3,186	6,192	7,606	90,638
Fenchuganj-4	60	30	30	28	27	25	27	21	22	11			281	29,554	809	441	3,189	29,274
<b>Field Total:</b>	<b>334</b>	<b>234</b>	<b>255</b>	<b>245</b>	<b>172</b>	<b>154</b>	<b>201</b>	<b>142</b>	<b>124</b>	<b>113</b>	<b>0</b>	<b>0</b>	<b>1,973</b>	<b>160,054</b>	<b>3,994</b>	<b>6,633</b>	<b>10,795</b>	<b>158080.237</b>
<b>Daily Avg.(mmscfd)</b>	11	8	8	8	6	5	6	5	4	4	0	0	6		11	18	30	
<b>Field :</b>	<b>Feni</b>																	
Feni-1	Production Suspended													34,214		34214		
Feni-2	Production Suspended													6,119		6119		
Feni-3	Production Suspended													2,176		2176		

## Monthly Production by Field and Well upto October- 2019



Figures in mmscf

Well	Jan	Feb	Mar	Apr	May	Jun	Jul	Aug	Sep	Oct	Nov	Dec	Total	Cumulative	2018	2017	2016	Cumulative 2018
Feni-4	Production Suspended									0	0			14,386				14,386
Feni-5	Production Suspended									0	0			6,127				6,127
<b>Field Total:</b>													<b>63,023</b>				<b>63022.613</b>	
<b>Daily Avg.(mmscfd)</b>																		
<b>Field : Habiganj</b>																		
Hbj-1	429	375	414	379	369	331	338	311	289	300			3,534	281,642	2,207	0	0	278,108
Hbj-2	0	0	0	0	0	0	0	0	0	0			0	275,704	0	0	0	275,704
Hbj-3	1,105	952	986	925	954	861	890	850	840	870			9,234	386,392	13,155	13,151	13,227	377,157
Hbj-4	1,105	952	986	925	954	861	890	850	840	870			9,234	380,850	13,155	13,151	13,227	371,615
Hbj-5	798	711	776	746	770	725	767	732	724	750			7,501	305,175	9,497	9,497	9,552	297,674
Hbj-6	461	413	459	447	461	435	460	440	435	451			4,463	166,672	5,487	5,491	5,523	162,209
Hbj-7	1,211	1,090	1,233	1,191	1,228	1,160	1,197	1,176	1,178	1,216			11,880	264,999	14,533	14,565	14,685	253,119
Hbj-8	0	0	0	0	0	0	0	0	0	0			0	11,023	0	0	0	11023
Hbj-9	0	0	0	0	0	0	0	0	0	0			0	52,652	0	0	0	52,652
Hbj-10	969	870	925.3	893	921	833	838	823	825	851			8,749	261,881	13,928	14,058	14,629	253,133
Hbj-11	697	623	619.3	598	617	544	539	529	530	547			5,844	102,152	9,579	10,398	11,247	96,308
<b>Field Total:</b>	<b>6,776</b>	<b>5,985</b>	<b>6,400</b>	<b>6,104</b>	<b>6,276</b>	<b>5,750</b>	<b>5920</b>	<b>5,712</b>	<b>5,662</b>	<b>5,855</b>	<b>0</b>	<b>0</b>	<b>60,440</b>	<b>2,489,141</b>	<b>81,540</b>	<b>80,313</b>	<b>82,091</b>	<b>2,428,701</b>
<b>Daily Avg.(mmscfd)</b>	219	214	206	203	202	192	191	184	189	189	0	0	199		223	220	225	
<b>Field : Jalalabad</b>																		
JB-1	877	733	790	761	813	703	786	670	788	768			7,688	253,457	10,469	9,142	11,951	245769.25
JB-2	1,088	910	978	934	1,001	876	975	832	978	953			9,526	289,122	12,973	14,517	17,057	279595.683
JB-3	1,451	1,214	1,313	1,277	1,344	1,177	1,300	1,120	1,304	1,271			12,770	353,295	17,399	19,162	21,086	340524.337
JB-4	453	379	410	399	419	368	406	345	408	397			3,985	282,985	5,821	7,045	8,313	279000.069
JB-6	1,451	1,114	1,313	1,277	1,332	1,163	1,297	1,010	1,304	1,262			12,523	71,848	17,364	19,524	19,136	59324.882
JB-7	1,088	910	985	955	1,014	882	973	793	978	953			9,531	38,921	13,053	10,324	5,254	29389.947
JB-8	1,073	898	971	943	1,000	860	959	782	965	940			9,389	53,319	12,793	14,513	16,252	43930.014
<b>Field Total:</b>	<b>7,482</b>	<b>6,158</b>	<b>6,760</b>	<b>6,546</b>	<b>6,922</b>	<b>6,029</b>	<b>6695</b>	<b>5,552</b>	<b>6,724</b>	<b>6,545</b>	<b>0</b>	<b>0</b>	<b>65,413</b>	<b>1,342,947</b>	<b>89,872</b>	<b>94,226</b>	<b>99,048</b>	<b>1277534.182</b>
<b>Daily Avg.(mmscfd)</b>	241	220	218	218	223	201	216	179	224	211	0	0	215		246	258	271	
<b>Field : Kailas Tila</b>																		
KTL-1	147	109	114	0	0	0	0	0	0	0			371	205,181	462	0	0	204809.47

## Monthly Production by Field and Well upto October- 2019



Figures in mmscf

Well	Jan	Feb	Mar	Apr	May	Jun	Jul	Aug	Sep	Oct	Nov	Dec	Total	Cumulative	2018	2017	2016	Cumulative 2018
KTL-2	612	551	610	585	607	590	611	610	592	615			5,981	184,128	7,190	7,242	7,282	178146.7467
KTL-3	235	209	228	221	226	219	226	226	218	206			2,214	140,034	2,947	3,255	5,003	137819.8563
KTL-4	253	228	254	242	238	229	229	217	186	190			2,267	98,363	3,336	3,680	3,499	96095.43219
KTL-5	0	0	0	0	0	0	0	0	0	0			0	17,923	0	0	0	17923
KTL-6	770	689	765	731	774	744	774	768	746	771			7,532	98,621	8,950	9,086	8,975	91088.59184
KTL-7	0	0	0	0	0	0	0	0	0	0			0	816	0	0	329	815.6361511
<b>Field Total:</b>	<b>2,017</b>	<b>1,787</b>	<b>1,971</b>	<b>1,779</b>	<b>1,846</b>	<b>1,783</b>	<b>1,841</b>	<b>1,820</b>	<b>1,741</b>	<b>1,782</b>	<b>0</b>	<b>0</b>	<b>18,367</b>	<b>745,065</b>	<b>22,886</b>	<b>23,263</b>	<b>25,088</b>	<b>726698.7332</b>
<b>Daily Avg.(mmscfd)</b>	65	64	64	59	60	59	59	59	58	57	0	0	60		63	64	69	
<b>Field : Kamta</b>																		
Kamta-1	Production Suspended													21,139			21139	
<b>Field Total:</b>			<b>0</b>	<b>0</b>	<b>0</b>	<b>0</b>	<b>0</b>	<b>0</b>	<b>0</b>	<b>0</b>	<b>0</b>	<b>0</b>		<b>21,139</b>				<b>21139</b>
<b>Daily Avg.(mmscfd)</b>																		
<b>Field : Meghna</b>																		
M-1	372	308	314	302	293	272	257	315	255	262			2,951	71,925	4,538	4,625	4,425	68973.5373
<b>Field Total:</b>	<b>372</b>	<b>308</b>	<b>314</b>	<b>302</b>	<b>293</b>	<b>272</b>	<b>257</b>	<b>315</b>	<b>255</b>	<b>262</b>	<b>0</b>	<b>0</b>	<b>2,951</b>	<b>71,925</b>	<b>4,538</b>	<b>4,625</b>	<b>4,425</b>	<b>68973.5373</b>
<b>Daily Avg.(mmscfd)</b>	12	11	10	10	9	9	8	10	9	8	0	0	10		12	13	12	
<b>Field : Moulavi Bazar</b>																		
MV Bazar-2	121	79	72	62	58	29	23	67	81	52			645	54,683	2,302	2,866	3,201	54,038
MV Bazar-3	207	149	124	113	173	92	75	204	245	199			1,581	159,390	3,712	4,705	5,394	157808.66
MV Bazar-4	159	102	67	60	54	26	83	109	117	100			876	58,944	3,103	3,945	4,141	58067.249
MV Bazar-5	0	0	0	0	0	0	0	0	0	0				66				66
MV Bazar-6	193	182	132	183	237	154	301	107	180	112			1,783	18,131	1,734	1,676	1,737	16348.576
MV Bazar-7	1	1	0	0	0	0	0	0	1	0			4	5,648	21	152	123	5643.781
MV Bazar-9	0	0	0	0	0	0	0	0	0	0			1	30,336	1	0	41	30335.407
<b>Field Total:</b>	<b>682</b>	<b>511</b>	<b>396</b>	<b>418</b>	<b>523</b>	<b>301</b>	<b>483</b>	<b>487</b>	<b>624</b>	<b>463</b>	<b>0</b>	<b>0</b>	<b>4,890</b>	<b>327,198</b>	<b>10,872</b>	<b>13,345</b>	<b>14,638</b>	<b>322,308</b>
<b>Daily Avg.(mmscfd)</b>	22	18	13	14	17	10	16	16	21	15	0	0	16		30	37	40	
<b>Field : Narshingdi</b>																		
N-1	530	479	530	535	566	478	58	504	502	506			4,687	149,281	6,181	6,279	6,242	144594.559
N-2	314	278	313	317	319	303	318	319	305	315			3,101	58,471	3,705	3,962	4,122	55369.7587
<b>Field Total:</b>	<b>844</b>	<b>757</b>	<b>843</b>	<b>852</b>	<b>885</b>	<b>780</b>	<b>376</b>	<b>823</b>	<b>806</b>	<b>821</b>	<b>0</b>	<b>0</b>	<b>7,788</b>	<b>207,752</b>	<b>9,886</b>	<b>10,241</b>	<b>10,364</b>	<b>199964.3177</b>

## Monthly Production by Field and Well upto October- 2019



**HYDROCARBON UNIT**  
Energy & Mineral Resources Division

Figures in mmscf

Well	Jan	Feb	Mar	Apr	May	Jun	Jul	Aug	Sep	Oct	Nov	Dec	Total	Cumulative	2018	2017	2016	Cumulative 2018
<b>Daily Avg.(mmscfd)</b>	27	27	27	28	29	26	12	27	27	26	0	0	26		27	28	28	
<b>Field : Rashidpur</b>																		
RP-1	542	491	530	513	537	513	536	539	513	538			5,253	172,315	6,505	6,625	6,639	167062.5729
RP-2	0	0	0	0	0	0	0	0	0	0			0	82,474				82474
RP-3	300	271	300	286	294	283	292	292	277	286			2,880	134,089	3,541	3,730	3,877	131208.35
RP-4	267	239	262	243	237	223	231	234	231	241			2,410	130,305	3,227	3,516	3,675	127895.31
RP-5	0	0	0	0	0	0	0	0	0	0			0	25,647				25647
RP-6	0	0	0	0	0	0	0	0	0	0			0	9,983	0	0	0	9983
RP-7	173	155	163	149	143	138	142	144	144	148			1,499	65,824	2,096	2,225	2,355	64325.3921
RP-8	314	284	314	300	306	296	300	290	273	285			2,962	21,995	3,696	3,977	4,422	19032.8637
<b>Field Total:</b>	<b>1,597</b>	<b>1,439</b>	<b>1,569</b>	<b>1,491</b>	<b>1,517</b>	<b>1,454</b>	<b>1501</b>	<b>1,499</b>	<b>1,438</b>	<b>1,498</b>	<b>0</b>	<b>0</b>	<b>15,004</b>	<b>642,633</b>	<b>19,065</b>	<b>20,074</b>	<b>20,969</b>	<b>627628.4887</b>
<b>Daily Avg.(mmscfd)</b>	52	51	51	50	49	48	48	48	48	48	0	0	49		52	55	57	
<b>Field : Salda Nadi</b>																		
Salda-1	0	0	0	0	0	0	0	0	0	0			0	36,904	0	0	0	36903.866
Salda-2	0	0	0	0	0	0	0	0	0	0			0	28,495	0	0	0	28495.0617
Salda-3	123	119	135	130	125	120	192	207	186	173			1,510	27,091	1,067	1,514	2,350	25580.4764
Salda-4	4	5	5	6	4	4	2	0	0	0			29	146	70	14	34	116.899
<b>Field Total:</b>	<b>127</b>	<b>124</b>	<b>140</b>	<b>136</b>	<b>128</b>	<b>123</b>	<b>194</b>	<b>207</b>	<b>186</b>	<b>173</b>	<b>0</b>	<b>0</b>	<b>1,540</b>	<b>92,636</b>	<b>1,137</b>	<b>1,527</b>	<b>2,383</b>	<b>91096.3031</b>
<b>Daily Avg.(mmscfd)</b>	4	4	5	5	4	4	6	7	6	6	0	0	5		3	4	7	
<b>Field : Sangu</b>																		
Sangu-1	0	0	0	0	0	0	0	0	0	0	0	0	0	116,191	0	0	0	116191.04
Sangu-3z	0	0	0	0	0	0	0	0	0	0	0	0	0	131,796	0	0	0	131796.06
Sangu-4	Production Suspended						0	0	0	0	0	0	0	87,280				87279.9
Sangu-5	Production Suspended						0	0	0	0	0	0	0	61,674				61674
Sangu-7	Production Suspended						0	0	0	0	0	0	0	18,202				18201.7567
Sangu-8	Production Suspended						0	0	0	0	0	0	0	37,619				37619.2233
Sangu-9	0	0	0	0	0	0	0	0	0	0	0	0	0	30,638	0	0	0	30638.2233
Sangu-10	Production Suspended						0	0	0	0	0	0	0					
Sangu-11	0	0	0	0	0	0	0	0	0	0	0	0	0	6,067	0	0	0	6066.805
<b>Field Total:</b>	<b>0</b>	<b>0</b>	<b>0</b>	<b>0</b>	<b>0</b>	<b>0</b>	<b>0</b>	<b>0</b>	<b>0</b>	<b>0</b>	<b>0</b>	<b>0</b>	<b>0</b>	<b>489,467</b>	<b>0</b>	<b>0</b>	<b>0</b>	<b>489467.0083</b>

## Monthly Production by Field and Well upto October- 2019



**HYDROCARBON UNIT**

Energy & Mineral Resources Division

Figures in mmscf

Well	Jan	Feb	Mar	Apr	May	Jun	Jul	Aug	Sep	Oct	Nov	Dec	Total	Cumulative	2018	2017	2016	Cumulative 2018
<b>Daily Avg.(mmscfd)</b>	0	0	0	0	0	0	0	0	0	0	0	0	0		0	0	0	
<b>Field :</b>	<b>Semutang</b>																	
Semutang-5	14	12	12	10	9	8	9	11	15	16			117	12,182	291	471	946	12,065
Semutang-6	7	11	14	14	14	14	14	12	14	15			129	1,084	84	66	0	956
<b>Field Total:</b>	<b>22</b>	<b>23</b>	<b>27</b>	<b>24</b>	<b>23</b>	<b>22</b>	<b>23</b>	<b>23</b>	<b>29</b>	<b>31</b>	<b>0</b>	<b>0</b>	<b>246</b>	<b>13,266</b>	<b>375</b>	<b>537</b>	<b>946</b>	<b>13,021</b>
<b>Daily Avg.(mmscfd)</b>	1	1	1	1	1	1	1	1	1	1	0	0	1		1	1	3	
<b>Field :</b>	<b>Shahbazpur</b>																	
Shahbazpur-1	0	0	0	0	35	265	66	146	0	18			530	21,888	134	4,835	3,623	21358
Shahbazpur-2	534	523	637	656	678	531	596	685	614	588			6,041	17,123	6,650	4,243	189	11082
Shahbazpur-3	377	436	505	510	536	585	619	629	597	622			5,417		5,222	1,162	3,116	12326
Shahbazpur-4	513	452	567	632	608	481	407	414	569	535			5,176	18,180	6,936	1,801	1,091	13003
<b>Field Total:</b>	<b>1,424</b>	<b>1,411</b>	<b>1,709</b>	<b>1,797</b>	<b>1,857</b>	<b>1,862</b>	<b>1,687</b>	<b>1,874</b>	<b>1,780</b>	<b>1,763</b>	<b>0</b>	<b>0</b>	<b>17,165</b>	<b>57,191</b>	<b>18,943</b>	<b>12,041</b>	<b>8,019</b>	<b>57770</b>
<b>Daily Avg.(mmscfd)</b>	46	50	55	60	60	62	54	60	59	57	0	0	56		52	33	22	
<b>Field</b>	<b>Srikail</b>																	
Srikail-2	442	417	461	443	452	432	446	451	428	444			4,417	42,360	5,154	5,384	6,064	37944
Srikail-3	358	333	363	337	337	322	333	329	315	324			3,349	38,181	4,273	4,944	6,607	34832
Srikail-4	276	256	277	272	261	248	254	242	238	236			2,559	11,005	2,971	3,439	2,035	8445
<b>Field Total:</b>	<b>1,076</b>	<b>1,005</b>	<b>1,102</b>	<b>1,052</b>	<b>1,050</b>	<b>1,001</b>	<b>1032</b>	<b>1,022</b>	<b>981</b>	<b>1,004</b>	<b>0</b>	<b>0</b>	<b>10,325</b>	<b>91,546</b>	<b>12,398</b>	<b>13,767</b>	<b>14,707</b>	<b>81221</b>
<b>Daily Avg.(mmscfd)</b>	35	36	36	35	34	33	33	33	33	33	0	0	34		34	38	40	
<b>Field :</b>	<b>Sundalpur</b>																	
Sundalpur -1	0	0	0		0	0	0	0	0				0	9,809	0	0	552	9809.0006
Sundalpur -2	220	200	220	212	218	207	218	216	210	219			2,139	4,315	2,176	0	0	2176.03
<b>Field Total:</b>	<b>220</b>	<b>200</b>	<b>220</b>	<b>212</b>	<b>218</b>	<b>207</b>	<b>218</b>	<b>216</b>	<b>210</b>	<b>219</b>	<b>0</b>	<b>0</b>	<b>2,139</b>	<b>14,124</b>	<b>2,176</b>	<b>0</b>	<b>552</b>	<b>11985.0306</b>
<b>Daily Avg.(mmscfd)</b>	7	7	7	7	7	7	7	7	7	7	0	0	7		6	0	2	
<b>Field :</b>	<b>Sylhet</b>																	
Sylhet-3	Production Suspended													89,032				89032
Sylhet-6	Production Suspended													91,748				91747.53593
Sylhet-7	131	108	118	113	117	111	115	115	109	113			1,150	28,141	1,622	2,061	2,212	26990.41911
Surma-1	0	0	0	0	0	0	0	0	0				0	6,528	0	249	720	6528.401488

## Monthly Production by Field and Well upto October- 2019



**HYDROCARBON UNIT**  
Energy & Mineral Resources Division

Figures in mmscf

Well	Jan	Feb	Mar	Apr	May	Jun	Jul	Aug	Sep	Oct	Nov	Dec	Total	Cumulative	2018	2017	2016	Cumulative 2018
<b>Field Total:</b>	<b>131</b>	<b>108</b>	<b>118</b>	<b>113</b>	<b>117</b>	<b>111</b>	<b>115</b>	<b>115</b>	<b>109</b>	<b>113</b>	<b>0</b>	<b>0</b>	<b>1,150</b>	<b>215,449</b>	<b>1,622</b>	<b>2,309</b>	<b>2,932</b>	<b>214,298</b>
<b>Daily Avg.(mmscfd)</b>	4	4	4	4	4	4	4	4	4	4	0	0	4		4	6	8	
<b>Field :</b>	<b>Titas</b>																	
Titas-1	675	537	559	566	571	521	556	533	538	537			5,594	445,222	8,516	7,897	9,999	439628.9693
Titas-2	962	865	939	906	968	903	918	842	895	902			9,099	444,603	11,522	11,506	11,474	435504.9345
Titas-3	0	0	0	0	0	0	0	0	0	0			0	314,888	0			314887.6245
Titas-4	994	861	960	923	972	900	937	844	911	938			9,241	379,692	11,726	11,798	12,782	370451.2679
Titas-5	1,020	899	997	968	1,015	975	1030	907	962	988			9,761	438,013	11,838	11,869	10,692	428251.9951
Titas-6	978	878	958	964	142	739	834	765	825	847			7,929	371,057	12,030	12,029	12,809	363128.3487
Titas-7	947	824	977	891	948	740	862	708	832	858			8,586	353,451	11,919	11,707	12,125	344864.483
Titas-8	510	426	498	497	567	433	493	461	507	485			4,877	277,513	6,154	6,889	7,046	272635.682
Titas-9	539	475	517	518	583	548	570	572	574	582			5,479	281,968	6,706	8,246	8,467	276489.3617
Titas-10	647	565	636	619	702	671	716	616	676	677			6,524	205,525	7,612	7,431	4,350	199001.0135
Titas-11	855	762	867	830	858	282	514	524	841	859			7,193	254,093	9,998	10,276	9,075	246900.6508
Titas-12	482	422	483	463	476	305	415	340	463	471			4,319	105,094	5,160	5,168	5,326	100775.0616
Titas-13	580	513	576	552	567	501	525	555	80	0			4,449	194,541	6,952	7,879	9,553	190092.1973
Titas-14	576	498	566	536	552	412	433	429	514	525			5,038	155,024	7,203	8,309	8,888	149985.7106
Titas-15	460	412	434	405	420	402	416	417	405	410			4,181	143,694	5,543	7,973	11,777	139513.7078
Titas-16	669	592	646	612	635	569	601	586	564	583			6,057	152,403	8,605	10,060	11,333	146345.658
Titas-17	515	431	507	475	514	443	508	465	488	489			4,836	44,338	6,335	7,011	7,359	39502.59074
Titas-18	546	458	535	504	540	464	537	489	518	520			5,110	43,115	6,664	7,168	7,338	38005.80988
Titas-19	507	450	489	458	471	441	471	470	458	462			4,678	32,727	6,115	6,106	6,253	28048.75173
Titas-20	305	277	310	294	306	292	292	298	298	309			2,982	21,809	3,914	3,635	3,645	18827.65405
Titas-21	253	232	258	249	263	250	256	260	255	259			2,535	11,767	2,995	2,800	1,572	9231.92508
Titas-22	309	284	296	231	269	265	275	264	249	247			2,688	27,106	4,158	4,336	5,497	24417.72136
Titas-27	487	404	478	455	479	418	496	485	458	490			4,650	33,489	5,827	6,136	6,233	28839.08566
Titas-23	483	436	489	477	496	459	474	192	184	475			4,164	14,169	5,594	4,410		10004.90412
Titas-24	202	185	207	196	195	188	204	449	452	186			2,463	7,455	2,709	2,283		4991.903932
Titas-25	528	476	528	508	519	472	500	740	756	473			5,502	17,716	6,324	5,622	269	12214.74275
Titas-26	809	733	801	731	783	702	769	453	481	789			7,051	26,317	9,672	9,210	383	19265.35388
<b>Field Total:</b>	<b>15,838</b>	<b>13,893</b>	<b>15,509</b>	<b>14,828</b>	<b>14,810</b>	<b>13,294</b>	<b>14,604</b>	<b>13,664</b>	<b>14,184</b>	<b>14,360</b>	<b>0</b>	<b>0</b>	<b>144,984</b>	<b>4,796,791</b>	<b>191,792</b>	<b>197,756</b>	<b>184,246</b>	<b>4651807.11</b>
<b>Daily Avg.(mmscfd)</b>	511	496	500	494	478	443	471	441	473	463	0	0	477		525	542	505	

## Monthly Production by Field and Well upto October- 2019



Figures in mmscf

Well	Jan	Feb	Mar	Apr	May	Jun	Jul	Aug	Sep	Oct	Nov	Dec	Total	Cumulative	2018	2017	2016	Cumulative 2018
<b>Field : Begumganj</b>																		
<b>Begumganj-3</b>	176	179	200	197	194	170	177	176	170	173			1,812	3,282	593	0	85	1,470
<b>Field Total:</b>	<b>176</b>	<b>179</b>	<b>200</b>	<b>197</b>	<b>194</b>	<b>170</b>	<b>177</b>	<b>176</b>	<b>170</b>	<b>173</b>	<b>0</b>	<b>0</b>	<b>1,812</b>	<b>3,282</b>	<b>593</b>	<b>0</b>	<b>85</b>	<b>1,470</b>
<b>Daily Avg.(mmscfd)</b>	6	6	6	7	6	6	6	6	6	6	0	0	6		2	0	0	
<b>Field : Rupganj</b>																		
<b>Rupganj-1</b>	0	0	0										0	679	0	679		679
<b>Field Total:</b>	<b>0</b>	<b>0</b>	<b>0</b>	<b>0</b>	<b>0</b>	<b>0</b>	<b>0</b>	<b>0</b>	<b>0</b>	<b>0</b>	<b>0</b>	<b>0</b>	<b>0</b>	<b>679</b>	<b>0</b>	<b>679</b>		<b>679</b>
<b>Daily Avg.(mmscfd)</b>	0	0	0	0	0	0	0	0	0	0	0	0	0		0	2		
<b>Grand Total (in Bcf)</b>	<b>83.29</b>	<b>72.98</b>	<b>80.78</b>	<b>78.59</b>	<b>81.55</b>	<b>71.84</b>	<b>80</b>	<b>74.67</b>	<b>78.40</b>	<b>79.32</b>	<b>0.00</b>	<b>0.00</b>	<b>781.3</b>	<b>17,222.63</b>	<b>964.7</b>	<b>979.8</b>	<b>973.1</b>	<b>16,459</b>
<b>Daily Avg.(mmscfd)</b>	<b>2,687</b>	<b>2,606</b>	<b>2,606</b>	<b>2,620</b>	<b>2,631</b>	<b>2,395</b>	<b>2576</b>	<b>2,409</b>	<b>2,613</b>	<b>2,559</b>	<b>0</b>	<b>0</b>	<b>2,570</b>		<b>2,643</b>	<b>2,684</b>	<b>2,666</b>	



## Monthly Condensate Production by Fields upto October 2019



Field Name	Jan-19	Feb-19	Mar-19	Apr-19	May-19	Jun-19	Jul-19	Aug-19	Sep-19	Oct-19	Nov-19	Dec-19	Total	Cumulative	2018	2017	2016
														000' bbl			
Bakhrabad	475	462	432	402	550	706	786	732	736	937			6,218	1,026	5,022	6,173	7,091
Daily Avg.	15	17	14	13	18	24	25	24	25	30	0	0	20		14	17	229
Bangura	9,547	8,321	8,755	8,380	8,381	7,905	9,092	7,736	8,806	9,041			85,964	1,151	94,737	103,198	103,416
Daily Avg.	308	297	282	279	270	264	293	250	294	292	0	0	283		260	283	3,336
Beani Bazar	4,207	3,945	4,525	4,262	4,394	4,198	4,268	4,212	4,072	4,180			42,261	1,609	51,187	68,202	56,146
Daily Avg.	136	141	146	142	142	140	138	27	136	135	0	0	139		140	187	1,811
Bibiyana	286,489	247,882	275,825	268,384	277,796	213,400	271,370	238,522	255,294	259,452			2,594,414	23,749	3,267,318	3,283,757	3,291,906
Daily Avg.	9,242	8,853	8,898	8,946	8,961	7,113	8,754	7,694	8,510	8,369	0	0	8,534		8,952	8,997	106,191
Chattak	0	0	0	0	0	0	0	0	0	0	0	0	0	4	0		
Daily Avg.	0	0	0	0	0	0	0	0	0	0	0	0	0		0		
Fenchuganj	126	80	121	108	90	48	41	27	20	25			686	116	1,625	2,462	6,138
Daily Avg.	4	3	4	4	3	2	1	1	1	1	0	0	2		4	7	198
Feni	0	0	0	0	0	0	0	0	0	0	0	0	0	110	0	0	0
Daily Avg.	0	0	0	0	0	0	0	0	0	0	0	0	0		0	0	0
Habiganj	721	610	776	681	642	571	564	550	541	530			6,186	136	5,612	3,955	4,143
Daily Avg.	23	22	25	23	21	19	18	18	18	17	0	0	20		15	11	134
Jalalabad	29,901	23,874	25,898	25,716	26,805	23,241	26,311	22,111	28,182	27,847			259,886	10,399	367,160	437,070	528,191
Daily Avg.	965	853	835	857	865	775	849	713	939	898	0	0	855		1,006	1,197	17,038
Kailas Tila	17,562	17,085	16,738	16,259	1,545	13,773	15,381	14,743	15,982	14,926			143,993	7,939	189,620	203,979	223,169
Daily Avg.	567	610	540	542	50	459	496	476	533	481	0	0	474		520	559	7,199
Kamta	Production Suspended										0	0		4			
Daily Avg.											0	0	0		0	0	
Meghna	589	514	647	678	645	592	605	546	553	583			5,952	113	7,947	7,741	7,735
Daily Avg.	19	18	21	23	21	20	20	18	18	19	0	0	20		22	21	250
Moulavi Bazar	104	80	63	53	62	27	41	57	59	85			630	118	856	1,128	1,585
Daily Avg.	3	3	2	2	2	1	1	2	2	3	0	0	2		2	3	51

## Monthly Condensate Production by Fields upto October 2019



Field Name	Jan-19	Feb-19	Mar-19	Apr-19	May-19	Jun-19	Jul-19	Aug-19	Sep-19	Oct-19	Nov-19	Dec-19	Total Cumulative 000' bbl	2018	2017	2016	
Narshingdi	1,285	1,131	1,235	1,205	1,217	1,120	785	1,264	1,189	1,209			11,640	429	15,797	16,656	17,534
Daily Avg.	41	40	40	40	39	37	25	41	40	39	0	0	38		43	46	566
Rashidpur	1,213	1,038	1,083	1,069	1,084	1,542	1,602	1,645	1,544	1,498			13,317	789	14,393	10,723	14,938
Daily Avg.	39	37	35	36	35	51	52	53	51	48	0	0	44		39	29	482
Saldanadi	19	19	21	20	19	17	60	35	27	25			261	59	137	225	386
Daily Avg.	1	1	1	1	1	1	2	1	1	1	0	0	1		0	1	12
Sangu	0	0	0	0	0	0	0	0	0	0	0	0	0	37	0	0	0
Daily Avg.	0	0	0	0	0	0	0	0	0	0	0	0	0	0	0	0	0
Semutang	0	0	0	0	0	0	0	0	2	2			4	5	26	99	272
Daily Avg.	0	0	0	0	0	0	0	0	0	0	0	0	0	0	0	0	9
Shahbazpur	187	148	211	207	207	27	193	216	200	196			1,791	8	2,488	1,791	839
Daily Avg.	6	5	7	7	7	1	6	7	7	6	0	0	6		7	5	27
Srikail	3,226	2,920	3,143	2,913	2,950	2,796	2,834	2,776	2,639	2,723			28,919	157	33,765	37,879	21,075
Daily Avg.	104	104	101	97	95	93	91	90	88	88	0	0	95		93	104	680
Sundalpur	10	9	10	10	9	24	40	11	11	15			149	1	121	0	0
Daily Avg.	0	0	0	0	0	1	1	0	0	0	0	0	0		0	0	0
Sylhet	969	864	981	881	901	845	860	838	137	800			8,078	804	10,277	15,593	20,532
Daily Avg.	31	31	32	29	29	28	28	27	5	26	0	0	27		28	43	662
Titas	13,655	11,331	12,573	12,503	12,163	10,239	11,065	10,500	11,188	12,347			117,564	5,341	159,803	154,262	133,133
Daily Avg.	440	405	406	417	392	341	357	339	373	398	0	0	387		438	423	4,295
Begumganj	60	60	57	63	58	54	57	57	65	56			588	1	201	0	0
Daily Avg.	2	0	0	0	0	2	2	2	0	2	0	0	2		1	0	0
Rupganj	0	0	0	0	0	0	0	0	0	0			0	1	0	1,133	
Daily Avg.	0	0	0	0	0	0	0	0	0	0	0	0	0		0	3	
<b>Total (000'bbl)</b>	<b>370</b>	<b>320</b>	<b>353</b>	<b>344</b>	<b>340</b>	<b>281</b>	<b>346</b>	<b>307</b>	<b>331</b>	<b>336</b>	<b>0</b>	<b>0</b>	<b>3,329</b>	<b>54,106</b>	<b>4,228</b>	<b>4,356</b>	<b>4,438</b>
<b>Daily Avg. (000'bbl)</b>	<b>11.9</b>	<b>11.4</b>	<b>11.4</b>	<b>11.5</b>	<b>11.0</b>	<b>9</b>	<b>11.2</b>	<b>9.9</b>	<b>11.0</b>	<b>10.9</b>	<b>0</b>	<b>0</b>	<b>11</b>		<b>11.6</b>	<b>11.9</b>	<b>12.2</b>

Note: Historical condensate figure of Sangu available from 2006. Sylhet available from August 1964

## Monthly Water Production by Fields in October 2019



Field Name	Jan-19	Feb-19	Mar-19	Apr-19	May-19	Jun-19	Jul-19	Aug-19	Sep-19	Oct-19	Nov-19	Dec-19	Total	2,018	2,017
Bakhrabad	2,117	1,708	1,795	1,720	2,049	2,172	2,259	2,269	2,192	2,265			20,546	28,218	8,419
Daily Avg.	68	61	58	57	66	72	73	73	73	73	0	0	68	77	
Bangura	3,330	3,016	3,301	3,107	3,197	2,968	3,296	2,797	3,266	3,272			31,550	43,917	11,705
Daily Avg.	107	108	106	104	103	99	106	90	109	106	0	0	104	120	
Beani Bazar	9,793	8,568	9,561	9,283	10,305	10,427	11,230	11,705	11,838	12,547			105,258	109,854	24,865
Daily Avg.	316	306	308	309	332	348	362	378	395	405	0	0	346	301	
Bibiyana	16,351	14,524	15,756	15,544	16,508	15,623	17,001	16,277	16,420	16,751			160,756	194,651	47,219
Daily Avg.	527	519	508	518	533	521	548	525	547	540	0	0	529	533	
Chattak	0	0	0	0	0	0	0	0	0	0	0	0			
Daily Avg.	0	0	0	0	0	0	0	0	0	0	0	0	0	0	
Fenchuganj	6,323	3,006	3,558	3,470	2,712	2,861	3,603	2,667	1,840	1,643			31,681	74,969	6,700
Daily Avg.	204	107	115	116	87	95	116	86	61	53	0	0	104	205	
Feni	0	0	0	0	0	0	0	0	0	0	0	0	0	0	0
Daily Avg.	0	0	0	0	0	0	0	0	0	0	0	0	0	0	0
Habiganj	2,532	2,133	1,034	874	988	820	793	775	782	818			11,549	39,104	5,197
Daily Avg.	82	76	33	29	32	27	26	25	26	26	0	0	38	107	
Jalalabad	4,717	4,157	4,424	4,369	4,254	3,659	3,872	3,213	4,920	5,577			43,162	55,950	12,915
Daily Avg.	152	148	143	146	137	122	125	104	164	180	0	0	142	153	
Kailas Tila	3,934	3,519	3,851	3,562	1,772	3,011	5,189	3,128	4,103	7,579			39,648	43,233	6,809
Daily Avg.	127	126	124	119	57	100	167	101	137	244	0	0	130	118	
Kamta	0	0	0	0	0	0	0	0	0	0	0	0			
Daily Avg.	0	0	0	0	0	0	0	0	0	0	0	0	0	0	
Meghna	211	429	525	631	631	651	693	639	790	884			6,084	2,014	551
Daily Avg.	7	15	17	21	20	22	22	21	26	29	0	0	20	6	
Moulavi Baza	1,379	710	735	550	427	189	200	237	224	409			5,061	13,965	754
Daily Avg.	44	25	24	18	14	6	6	8	7	13	0	0	17	38	
Narshingdi	883	798	888	879	939	806	466	884	854	891			8,288	10,374	2,645
Daily Avg.	28	29	29	29	30	27	15	29	28	29	0	0	27	28	
Rashidpur	13,567	12,332	13,512	12,940	13,181	12,638	13,173	13,322	13,033	13,780			131,478	137,406	30,969
Daily Avg.	438	440	436	431	425	421	425	430	434	445	0	0	432	376	
Saldanadi	129	115	126	127	131	127	137	140	132	139			1,303	813	387
Daily Avg.	4	4	4	4	4	4	4	5	4	4	0	0	4	2	

## Monthly Water Production by Fields in October 2019



Field Name	Jan-19	Feb-19	Mar-19	Apr-19	May-19	Jun-19	Jul-19	Aug-19	Sep-19	Oct-19	Nov-19	Dec-19	Total	2,018	2,017
Sangu	0	0	0	0	0	0	0	0	0	0	0	0	0	0	0
Daily Avg.	0	0	0	0	0	0	0	0	0	0	0	0	0	0	0
Semutang	45	47	69	63	65	63	74	71	100	112			707	3,002	719
Daily Avg.	1	2	2	2	2	2	2	2	3	4	0	0	2	8	
Shahbazpur	1,789	1,679	2,096	2,180	2,244	2,257	2,038	2,306	2,191	2,152			20,932	22,110	3,912
Daily Avg.	58	60	68	73	72	75	66	74	73	69	0	0	69	61	
Srikail	1,649	1,517	2,021	1,641	1,662	1,592	1,654	1,698	1,557	1,632			16,621	18,432	4,904
Daily Avg.	53	54	65	55	54	53	53	55	52	53	0	0	55	50	
Sundalpur	26	24	27	27	27	32	48	28	27	30			295	219	0
Daily Avg.	1	1	1	1	1	1	2	1	1	1	0	0	1	1	
Sylhet	2,312	2,022	2,221	2,156	2,234	2,511	4,664	5,098	401	5,222			28,841	20,362	1,298
Daily Avg.	75	72	72	72	72	84	150	164	13	168	0	0	95	56	
Titas	49,706	45,683	50,613	49,852	54,221	50,778	53,773	54,016	30,523	26,704			465,869	556,608	126,334
Daily Avg.	1,603	1,632	1,633	1,662	1,749	1,693	1,735	1,742	1,017	861	0	0	1,532	1,525	
Begumganj	69	54	61	59	59	67	66	56	62	64			616	207	0
Daily Avg.	2	2	2	2	2	2	2	2	2	2	0	0	2	1	
Rupganj	0	0	0	0	0	0	0	0	0	0			0	0	34
Daily Avg.	0	0	0	0	0	0	0	0	0	0	0	0	0	0	
<b>Total (000'bl)</b>	<b>120,860</b>	<b>106,040</b>	<b>116,173</b>	<b>113,034</b>	<b>117,606</b>	<b>113,251</b>	<b>124,229</b>	<b>121,326</b>	<b>95,255</b>	<b>102,469</b>	<b>0</b>	<b>0</b>	<b>1,130,245</b>	<b>1,375,408</b>	<b>296</b>
<b>Daily Avg. (000'bbl)</b>	<b>3,899</b>	<b>3,787</b>	<b>3,748</b>	<b>3,768</b>	<b>3,794</b>	<b>3,775</b>	<b>4,007</b>	<b>3,914</b>	<b>3,175</b>	<b>3,305</b>	<b>0</b>	<b>0</b>	<b>3,718</b>	<b>3,768</b>	<b>1</b>

## Conditions of Field and Well upto October 2019



Well	company	well type	Discovery	production start	Drilled depth (ft)	Pressure	Pressure type	Completion Zone
<b>Field : Bakharabad</b>								
BKB-1	BGFCL	Vertical	1969	June,1969	9309		FWHP	J
BKB-2	BGFCL	Directional	1969	October,1981	7496	248-274	FWHP	G
BKB-3	BGFCL	Directional	1969	April,1982	9339	356-412	FWHP	G
BKB-4	BGFCL	Directional	1969	June,1982	9430			D
BKB-5	BGFCL	Directional	1969	Sept,1982	9675	1555-1646	FWHP	B
BKB-6	BGFCL	Directional	1969	March,1989	8785			J
BKB-7	BGFCL	Directional	1969	July,1989	8605		FWHP	J
BKB-8	BGFCL	Directional	1969	Sept,1989	8840	490-523	FWHP	J
BKB-9	BGFCL	Vertical	1969	August,2013	8318	1005-1097	FWHP	G
BKB-10	BGFCL	Directional	1969	June,2016	9291	1010-1102	FWHP	K
<b>Field : Bangura</b>								
Bangura-1	Tullow		2004			887-940	FWHP	D
Bangura-2	Tullow		2004			587-685	FWHP	D/E
Bangura-3	Tullow		2004			719-789	FWHP	D
Bangura-6	Tullow		2004			708-780	FWHP	D
Bangura-5	Tullow		2004			579-621	FWHP	D
<b>Field : Beani Bazar</b>								
BB-1	SGFL		1981	July,1999	13480	580-620	SIWHP	Upper
BB-2	SGFL		1981	July,1999	12048	3210-3220	FWHP	Upper
<b>Field : Bibiyana</b>								
BY-1	Chevron		1998			1547-2007	FWHP	BB60, BB66
BY-2	Chevron		1998			1313-1390	FWHP	BB60, BH20A, BH20E
BY-3	Chevron		1998			1363-1403	FWHP	BB70
BY-4	Chevron		1998			1330-1390	FWHP	BH10
BY-5	Chevron		1998			1254-1299	FWHP	BH20A, BH20B, BH20C, BH20D
BY-6	Chevron		1998			1250-1486	FWHP	BB70
BY-7	Chevron		1998			1454-1566	FWHP	BH10
BY-8	Chevron		1998			1270-1297	FWHP	BH20A, BH20B
BY-9	Chevron		1998			1243-1273	FWHP	BH10
BY-10	Chevron		1998			1465-1533	FWHP	BB60
BY-11	Chevron		1998			1260-1284	FWHP	BH20A, BH20B
BY-12	Chevron		1998			1259-1332	FWHP	BB70
BY-13	Chevron		1998			1300-1356	FWHP	BH20A, BH20B
BY-14	Chevron		1998			1342-1632	FWHP	BH20A, BH20B
BY-15	Chevron		1998			2189-2240	FWHP	BB60
BY-16	Chevron		1998			1381-1644	FWHP	BH10, BH20D

## Conditions of Field and Well upto October 2019



Well	company	well type	Discovery	production start	Drilled depth (ft)	Pressure	Pressure type	Completion Zone
BY-17	<i>Chevron</i>		<i>1998</i>			<i>2104-2229</i>	<i>FWHP</i>	<i>BB60</i>
BY-18	<i>Chevron</i>		<i>1998</i>			<i>1904-2218</i>	<i>FWHP</i>	<i>BB60</i>
BY-19	<i>Chevron</i>		<i>1998</i>			<i>1354-1477</i>	<i>FWHP</i>	<i>BH10, BH20A</i>
BY-20	<i>Chevron</i>		<i>1998</i>			<i>1248-1262</i>	<i>FWHP</i>	<i>BH20D, BH20A, BH10</i>
BY-21	<i>Chevron</i>		<i>1998</i>			<i>1333-1348</i>	<i>FWHP</i>	<i>BH20A, BH20B, BH10</i>
BY-22	<i>Chevron</i>		<i>1998</i>			<i>1552-1586</i>	<i>FWHP</i>	<i>BB60</i>
BY-23	<i>Chevron</i>		<i>1998</i>			<i>1739-2021</i>	<i>FWHP</i>	<i>BH10, BH20A, BH20B, BH20C</i>
BY-24	<i>Chevron</i>		<i>1998</i>			<i>1337-2091</i>	<i>FWHP</i>	<i>BB60</i>
BY-25	<i>Chevron</i>		<i>1998</i>			<i>1728-1857</i>	<i>FWHP</i>	<i>BB60, BB66</i>
BY-26	<i>Chevron</i>		<i>1998</i>			<i>1877-2094</i>	<i>FWHP</i>	<i>BB60, BB64</i>
<b>Field : Chattak</b>								
Ch-1	SGFL		1959					
<b>Field : Fenchuganj</b>								
Fenchuganj-2	<i>BAPEX</i>		<i>1988</i>	<i>May, 2004</i>				
Fenchuganj-3	<i>BAPEX</i>		<i>1988</i>	<i>February, 2005</i>		<i>2004-2010</i>		<i>upper</i>
Fenchuganj-4	<i>BAPEX</i>		<i>1988</i>			<i>2037-2065</i>		
<b>Field : Feni</b>								
Feni-1	<i>BAPEX</i>		<i>1981</i>					
Feni-2	<i>BAPEX</i>		<i>1981</i>					
Feni-3	<i>BAPEX</i>		<i>1981</i>					
Feni-4	<i>BAPEX</i>		<i>1981</i>					
Feni-5	<i>BAPEX</i>		<i>1981</i>					
<b>Field : Habiganj</b>								
Hbj-1	<i>BGFCL</i>	<i>Vertical</i>	<i>1963</i>	<i>Feb,1969</i>	<i>11500</i>		<i>FWHP</i>	<i>upper</i>
Hbj-2	<i>BGFCL</i>	<i>Vertical</i>	<i>1963</i>	<i>Feb,1969</i>	<i>5100</i>		<i>FWHP</i>	<i>upper</i>
Hbj-3	<i>BGFCL</i>	<i>Vertical</i>	<i>1963</i>	<i>July,1985</i>	<i>5282</i>	<i>1478-1486</i>	<i>FWHP</i>	<i>upper</i>
Hbj-4	<i>BGFCL</i>	<i>Vertical</i>	<i>1963</i>	<i>May,1985</i>	<i>5249</i>	<i>1460-1467</i>	<i>FWHP</i>	<i>upper</i>
Hbj-5	<i>BGFCL</i>	<i>Directional</i>	<i>1963</i>	<i>Feb,1992</i>	<i>11552</i>	<i>1440-1446</i>	<i>FWHP</i>	<i>upper</i>
Hbj-6	<i>BGFCL</i>	<i>Vertical</i>	<i>1963</i>	<i>Feb,1992</i>	<i>5515</i>	<i>1375-1379</i>	<i>FWHP</i>	<i>upper</i>
Hbj-7	<i>BGFCL</i>	<i>Vertical</i>	<i>1963</i>	<i>April,2000</i>	<i>10236</i>	<i>1331-1139</i>	<i>FWHP</i>	<i>upper</i>
Hbj-8	<i>BGFCL</i>	<i>Vertical</i>	<i>1963</i>	<i>May, 2000</i>	<i>5280</i>			<i>upper</i>
Hbj-9	<i>BGFCL</i>	<i>Vertical</i>	<i>1963</i>	<i>July,1998</i>	<i>5249</i>			<i>upper</i>
Hbj-10	<i>BGFCL</i>	<i>Vertical</i>	<i>1963</i>	<i>Apr, 2000</i>	<i>5133</i>	<i>1322-1331</i>	<i>FWHP</i>	<i>upper</i>
Hbj-11	<i>BGFCL</i>	<i>Vertical</i>	<i>1963</i>	<i>February,2008</i>	<i>10499</i>	<i>1417-1423</i>	<i>FWHP</i>	<i>upper</i>
<b>Field : Jalalabad</b>								
JB-1	<i>Chevron</i>		<i>1989</i>			<i>1333-1436</i>	<i>FWHP</i>	<i>BB60, BB50</i>

## Conditions of Field and Well upto October 2019



Well	company	well type	Discovery	production start	Drilled depth (ft)	Pressure	Pressure type	Completion Zone
JB-2	<i>Chevron</i>		<i>1989</i>			<i>1279-1294</i>	<i>FWHP</i>	<i>BB50, BB60</i>
JB-3	<i>Chevron</i>		<i>1989</i>			<i>1332-1375</i>	<i>FWHP</i>	<i>BB50, BB60</i>
JB-4	<i>Chevron</i>		<i>1989</i>			<i>1365-1425</i>	<i>FWHP</i>	<i>BB60</i>
JB-6	<i>Chevron</i>		<i>1989</i>			<i>1354-1362</i>	<i>FWHP</i>	<i>BB60, BB50</i>
JB-7	<i>Chevron</i>		<i>1989</i>			<i>1666-1679</i>	<i>FWHP</i>	<i>BB20</i>
JB-8	<i>Chevron</i>		<i>1989</i>			<i>1362-1370</i>	<i>FWHP</i>	<i>BB50, BB60</i>
<b>Field : Kailas Tila</b>								
KTL-1	<i>SGFL</i>		<i>1962</i>	<i>June, 1983</i>	<i>12417</i>	<i>0</i>	<i>SIWHP</i>	
KTL-2	<i>SGFL</i>		<i>1962</i>	<i>Feb, 1995</i>		<i>2225-2230</i>	<i>FWHP</i>	
KTL-3	<i>SGFL</i>		<i>1962</i>	<i>March, 1995</i>		<i>2470-2495</i>	<i>FWHP</i>	
KTL-4	<i>SGFL</i>		<i>1962</i>	<i>March, 1997</i>		<i>2360-2410</i>	<i>FWHP</i>	
KTL-5	<i>SGFL</i>		<i>1962</i>	<i>Sep, 2006</i>		<i>0</i>	<i>SIWHP</i>	
KTL-6	<i>SGFL</i>		<i>1962</i>	<i>Aug, 2007</i>		<i>2490-2495</i>	<i>FWHP</i>	
KTL-7	<i>SGFL</i>		<i>1962</i>			<i>0</i>	<i>SIWHP</i>	
<b>Field : Kamta</b>								
Kamta-1	<i>BGFCL</i>	<i>Vertical</i>	<i>1981</i>	<i>july,1982</i>	<i>11857</i>			<i>N/A</i>
<b>Field : Meghna</b>								
M-1	<i>BGFCL</i>	<i>Vertical</i>	<i>2004</i>	<i>july,1990</i>	<i>10069</i>	<i>1400-1450</i>	<i>FWHP</i>	<i>A,E,F &amp; G</i>
<b>Field : Moulavi Bazar</b>								
MV Bazar-2	<i>Chevron</i>		<i>1997</i>			<i>800-820</i>	<i>FWHP</i>	<i>BB70</i>
MV Bazar-3	<i>Chevron</i>		<i>1997</i>			<i>800-820</i>	<i>FWHP</i>	<i>BB70</i>
MV Bazar-4	<i>Chevron</i>		<i>1997</i>			<i>946-952</i>	<i>FWHP</i>	<i>BB20</i>
MV Bazar-5	<i>Chevron</i>		<i>1997</i>			<i>0</i>	<i>SIWHP</i>	<i>BB60</i>
MV Bazar-6	<i>Chevron</i>		<i>1997</i>			<i>822-890</i>	<i>FWHP</i>	<i>BB20</i>
MV Bazar-7	<i>Chevron</i>		<i>1997</i>			<i>844-901</i>	<i>FWHP/SIWHP</i>	<i>BB20</i>
MV Bazar-9	<i>Chevron</i>		<i>1997</i>			<i>0</i>	<i>SIWHP</i>	<i>BB46, BB48, BB60</i>
<b>Field : Narshingdi</b>								
N-1	<i>BGFCL</i>	<i>vertical</i>	<i>1990</i>	<i>october,1990</i>	<i>11320</i>	<i>1143-1197</i>	<i>FWHP</i>	<i>BL</i>
N-2	<i>BGFCL</i>	<i>vertical</i>	<i>1990</i>	<i>february,2007</i>	<i>10778</i>	<i>1015-1097</i>	<i>FWHP</i>	<i>BL</i>
<b>Field : Rashidpur</b>								
RP-1	<i>SGFL</i>		<i>1960</i>			<i>1290-1291</i>	<i>FWHP</i>	<i>Upper</i>
RP-2	<i>SGFL</i>		<i>1960</i>			<i>73</i>	<i>SIWHP</i>	<i>Lower</i>
RP-3	<i>SGFL</i>		<i>1960</i>			<i>1548-1568</i>	<i>FWHP</i>	<i>Lower</i>
RP-4	<i>SGFL</i>		<i>1960</i>			<i>1450-1655</i>	<i>FWHP</i>	<i>Lower</i>
RP-5	<i>SGFL</i>		<i>1960</i>			<i>2291</i>	<i>SIWHP</i>	<i>Lower</i>
RP-6	<i>SGFL</i>		<i>1960</i>			<i>870</i>	<i>SIWHP</i>	<i>A</i>

## Conditions of Field and Well upto October 2019



Well	company	well type	Discovery	production start	Drilled depth (ft)	Pressure	Pressure type	Completion Zone
RP-7	SGFL		1960			1308-1338	FWHP	Lower
RP-8	SGFL		1960			1600-1625	FWHP	Upper
<b>Field : Salda Nadi</b>								
Salda-1	BAPEX		1995					
Salda-2	BAPEX		1995					
Salda-3	BAPEX	Directional	1995	February, 2012		639-640, 698-700		Upper/Lower
Salda-4	BAPEX		1995					
<b>Field : Sangu</b>								
Sangu-1	BGFCL		1996					
Sangu-3z	BGFCL		1996					
Sangu-4	BGFCL		1996					
Sangu-5	BGFCL		1996					
Sangu-7	BGFCL		1996					
Sangu-8	BGFCL		1996					
Sangu-9	BGFCL		1996					
Sangu-10	BGFCL		1996					
Sangu-11	BGFCL		1996					
<b>Field : Semutang</b>								
Semutang-5	BAPEX		1967			280-508		Lower Zone
Semutang-6	BAPEX		1967			750-1302		
<b>Field : Shahbazpur</b>								
Shahbazpur-1	BAPEX		1995	May, 2009		2310-3543		Lower Zone
Shahbazpur-2	BAPEX		1995			3541-4133		Lower Zone
Shahbazpur-3	BAPEX		1995			4300		Upper Zone
Shahbazpur-4	BAPEX		1995			4250		Upper Zone
<b>Field : Srikail</b>								
Srikail-2	BAPEX		2012			990-1016		Upper & Lower D
Srikail-3	BAPEX		2012			981-1043		Upper & Lower D
Srikail-4	BAPEX		2012			1018-1068		Upper & Lower D
<b>Field : Sundalpur</b>								
Sundalpur -1	BAPEX		2011					
Sundalpur -2	BAPEX		2011					
<b>Field : Sylhet</b>								
Sylhet-3	SGFL		1955	Aug, 1958				
Sylhet-6	SGFL		1955	Aug, 1964		800-850	SIWHP	
Sylhet-7	SGFL		1955	Apr, 2005		1750-1820	FWHP	Lower Bokabil

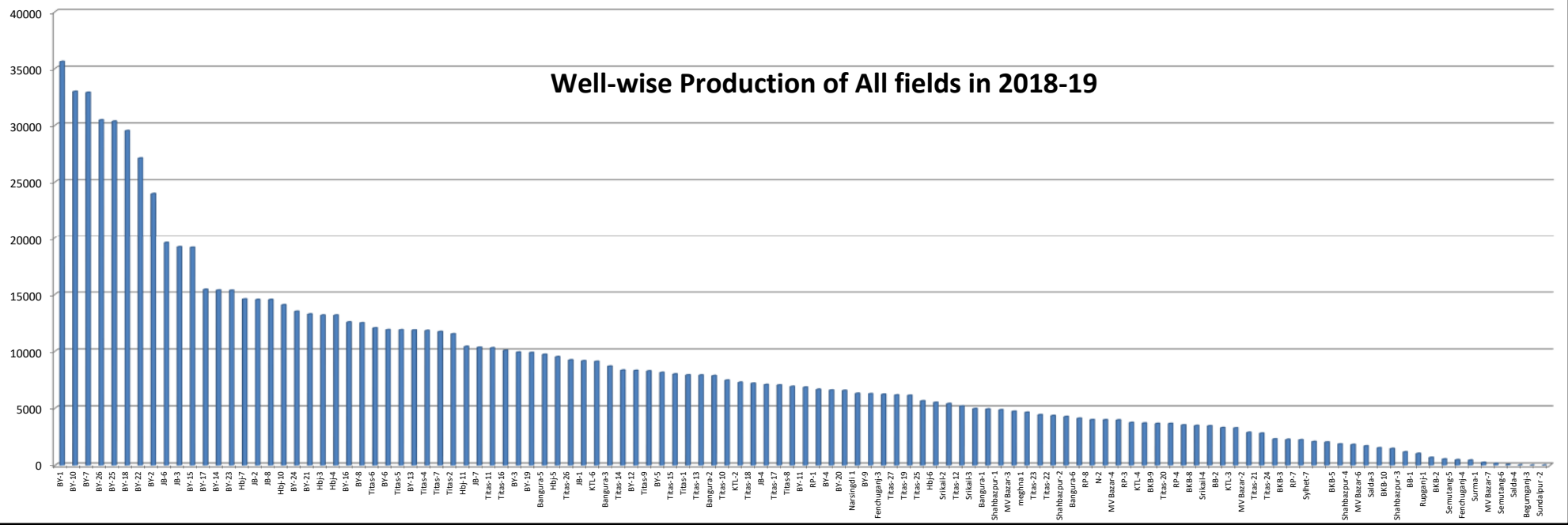


## Conditions of Field and Well upto October 2019

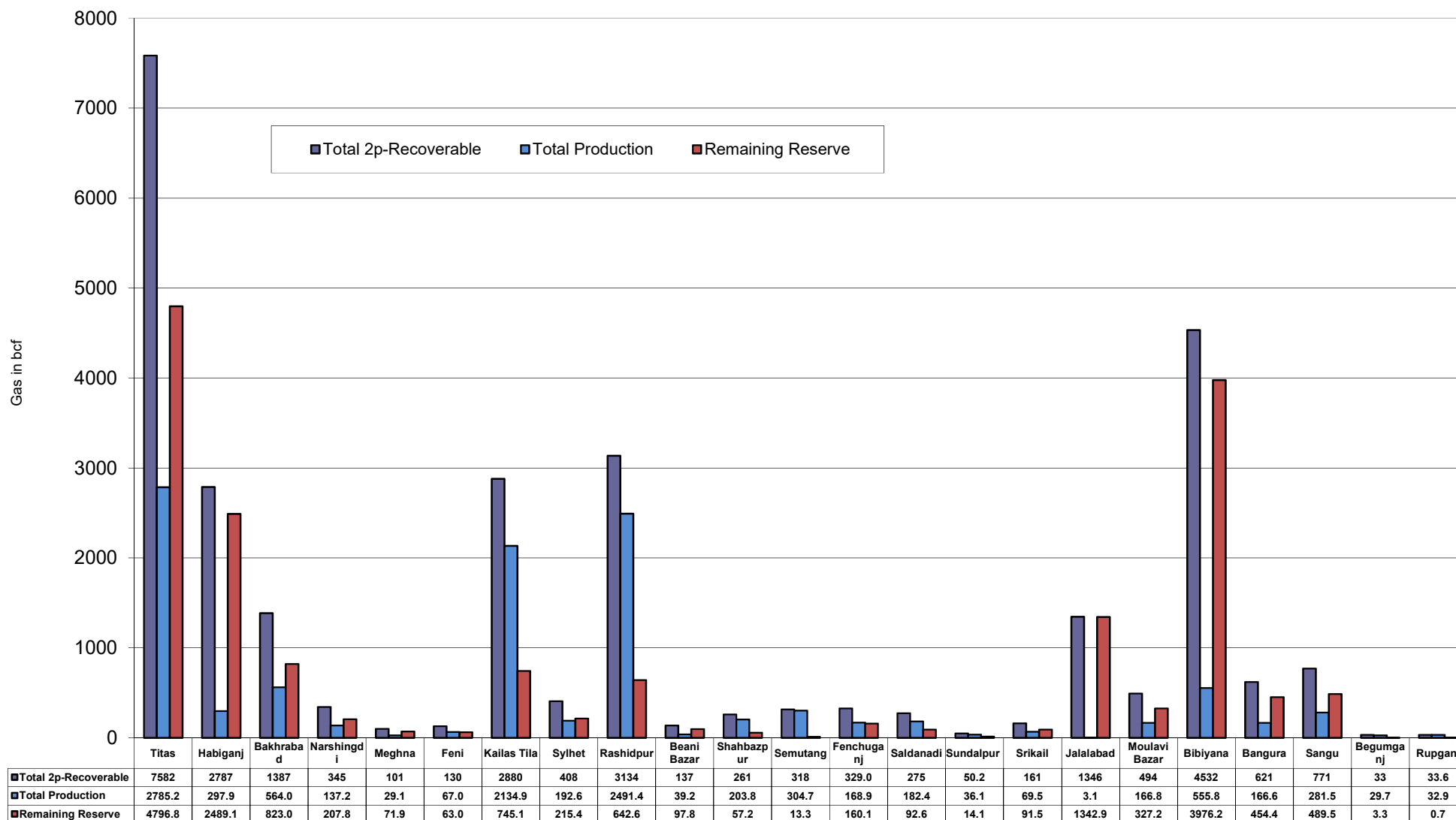


Well	company	well type	Discovery	production start	Drilled depth (ft)	Pressure	Pressure type	Completion Zone
Surma-1	SGFL		1955	June, 2010		230	SIWHP	C & D
<b>Field : Titas</b>								
Titas-1	BGFCL	vertical	1962	Mar,1969	12325	900-925	FWHP	A
Titas-2	BGFCL	vertical	1962	Fen,1969	10574	960-1020	FWHP	A
Titas-3	BGFCL	vertical	1962	sept,1969	9315	0	FWHP	A
Titas-4	BGFCL	vertical	1962	oct,1969	9350	1020-1070	FWHP	A
Titas-5	BGFCL	Directional	1962	jan,1981	10805	990-1035	FWHP	A
Titas-6	BGFCL	vertical	1962	Feb,1984	10072	1195-1225	FWHP	A
Titas-7	BGFCL	Directional	1962	July,1985	11006	1090-1160	FWHP	A
Titas-8	BGFCL	Directional	1962	sept,1985	11760	1000-1030	FWHP	B & C
Titas-9	BGFCL	Directional	1962	jan,1988	11893	1040-1085	FWHP	B & C
Titas-10	BGFCL	Directional	1962	may,1988	12139	1140-1180	FWHP	A
Titas-11	BGFCL	vertical	1962	Jun,1991	10462	1275-1310	FWHP	A
Titas-12	BGFCL	Directional	1962	July,2002	9873	1465-1500	FWHP	A
Titas-13	BGFCL	Directional	1962	June,2000	11487	1085-1115	FWHP	A
Titas-14	BGFCL	Directional	1962	June,2000	11004	1200-1250	FWHP	A
Titas-15	BGFCL	vertical	1962	may,2006	10446	0	FWHP	A
Titas-16	BGFCL	Directional	1962	dec,2005	11673	1205-1225	FWHP	A
Titas-17	BGFCL	vertical	1962	feb,2013	9424	1145-1175	FWHP	A
Titas-18	BGFCL	Directional	1962	august,2013	10932	1165-1190	FWHP	A
Titas-19	BGFCL	Directional	1962	may,2014	12730	1365-1415	FWHP	A
Titas-20	BGFCL	Directional	1962	oct,2013	11585	1370-1440	FWHP	A
Titas-21	BGFCL	Directional	1962	dec,2013	11631	1260-1285	FWHP	A
Titas-22	BGFCL	Directional	1962	march,2014	11926	990-1025	FWHP	A
Titas-27	BGFCL	Directional	1962	april,2014	10292	1245-1265	FWHP	A
Titas-23	BGFCL	Directional	1962	feb,2017	11988	2265-2340	FWHP	C
Titas-24	BGFCL	Directional	1962	oct,2016	12686	1120-1245	FWHP	C
Titas-25	BGFCL	vertical	1962	march,2016	11680	1300-1340	FWHP	A
Titas-26	BGFCL	Directional	1962	july,2016	12618	1840-1875	FWHP	C
<b>Field : Begumganj</b>								
Begumganj-3	BAPEX		1977					
<b>Field : Rupganj</b>								
Rupganj-1	BAPEX		2014			38-88		

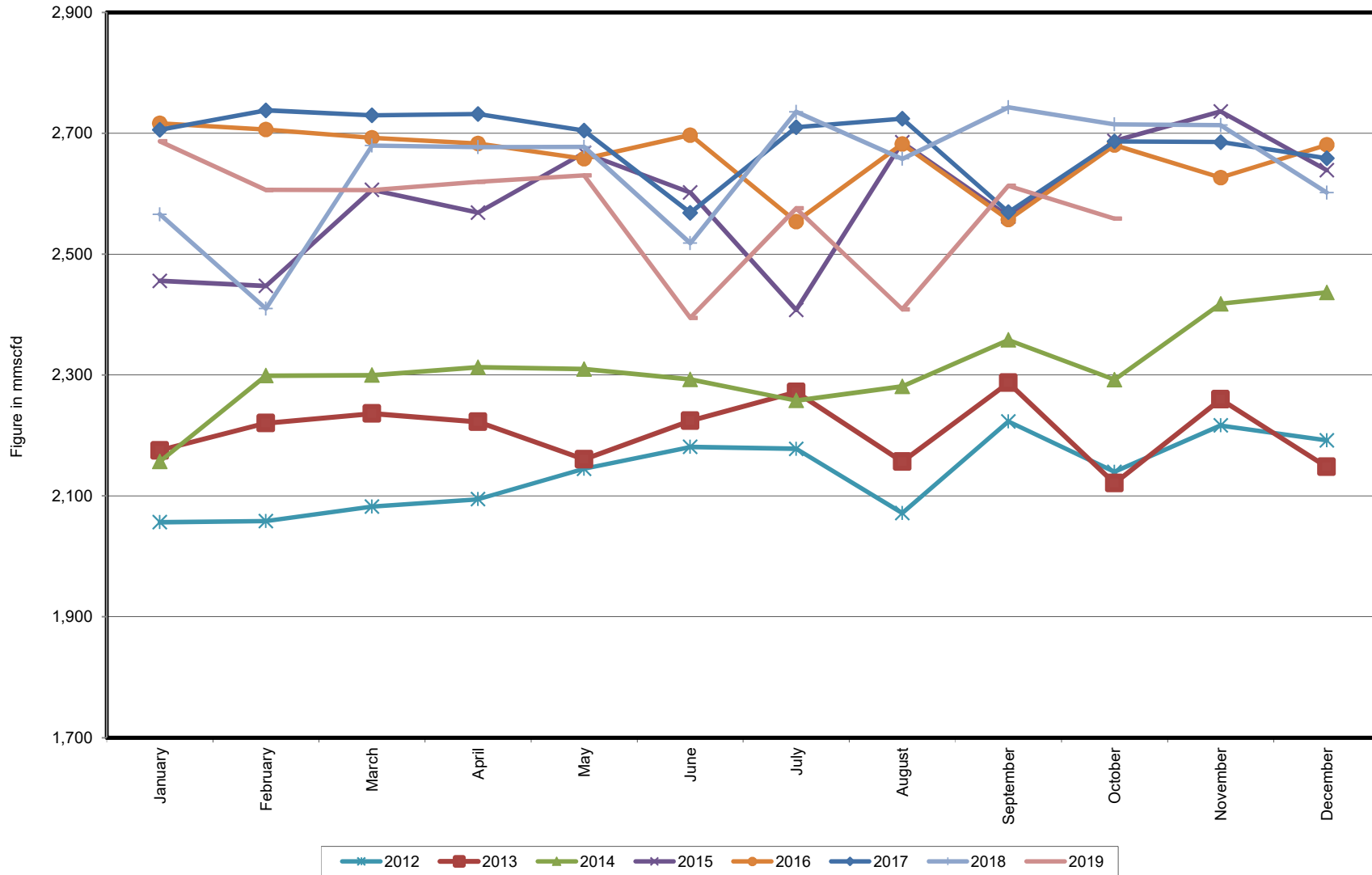
### Well-wise Production of All fields in 2018-19



## Reserve, Production and Remaining Reserve as of October 2019



## Daily Avg. Production From January 2012 to October 2019



## Field Wise Daily Avg. Production October 2019

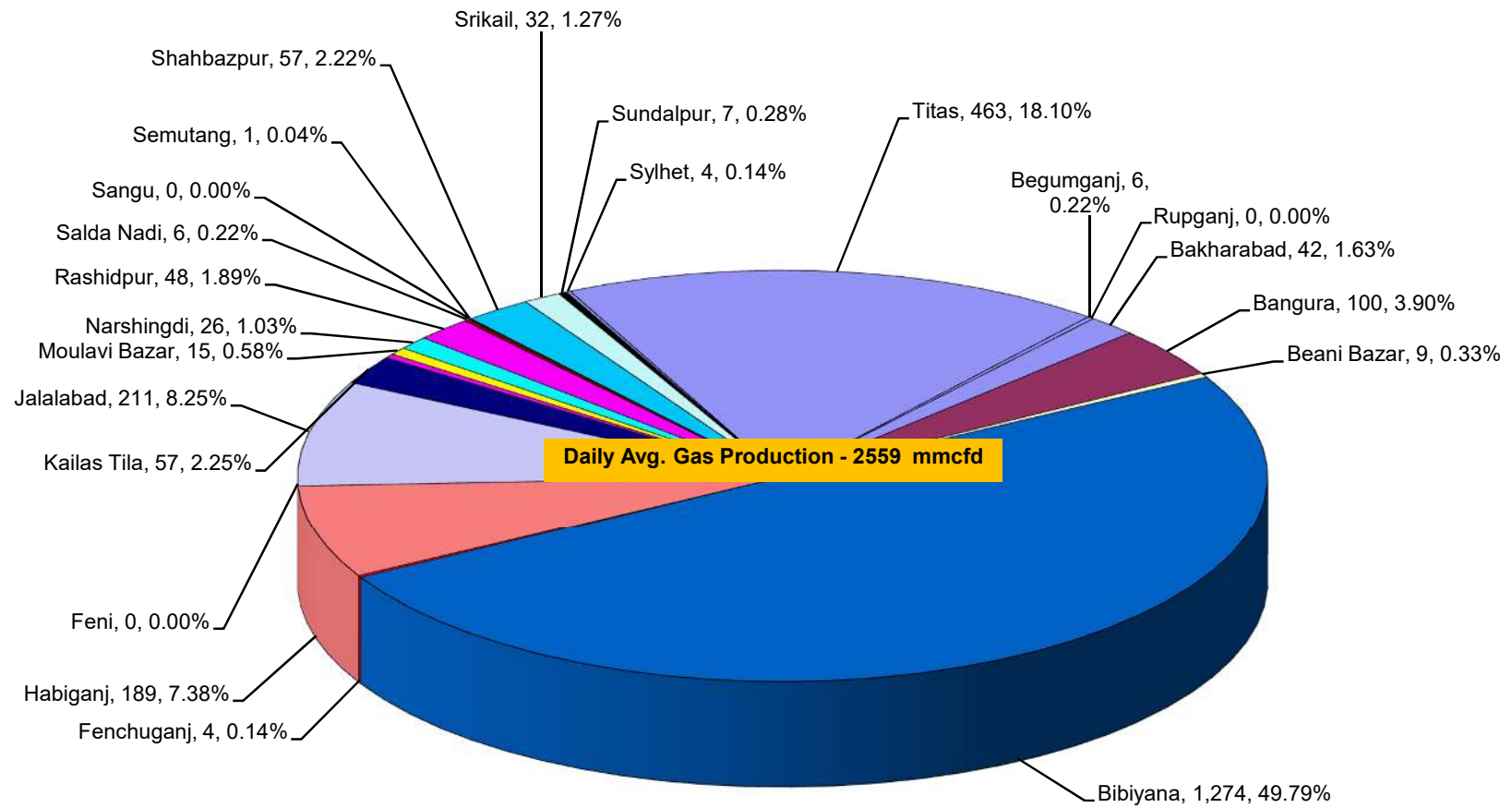
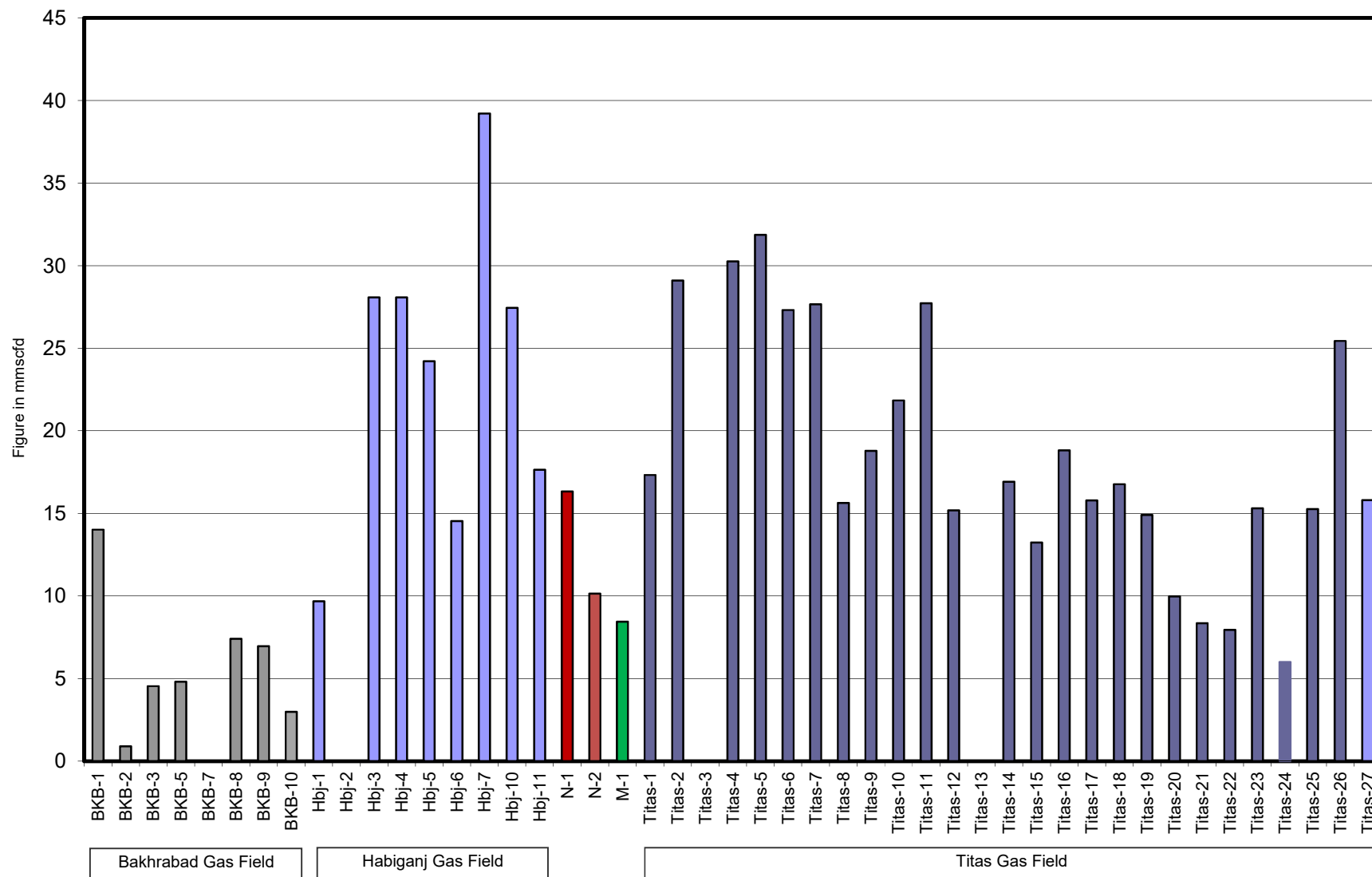


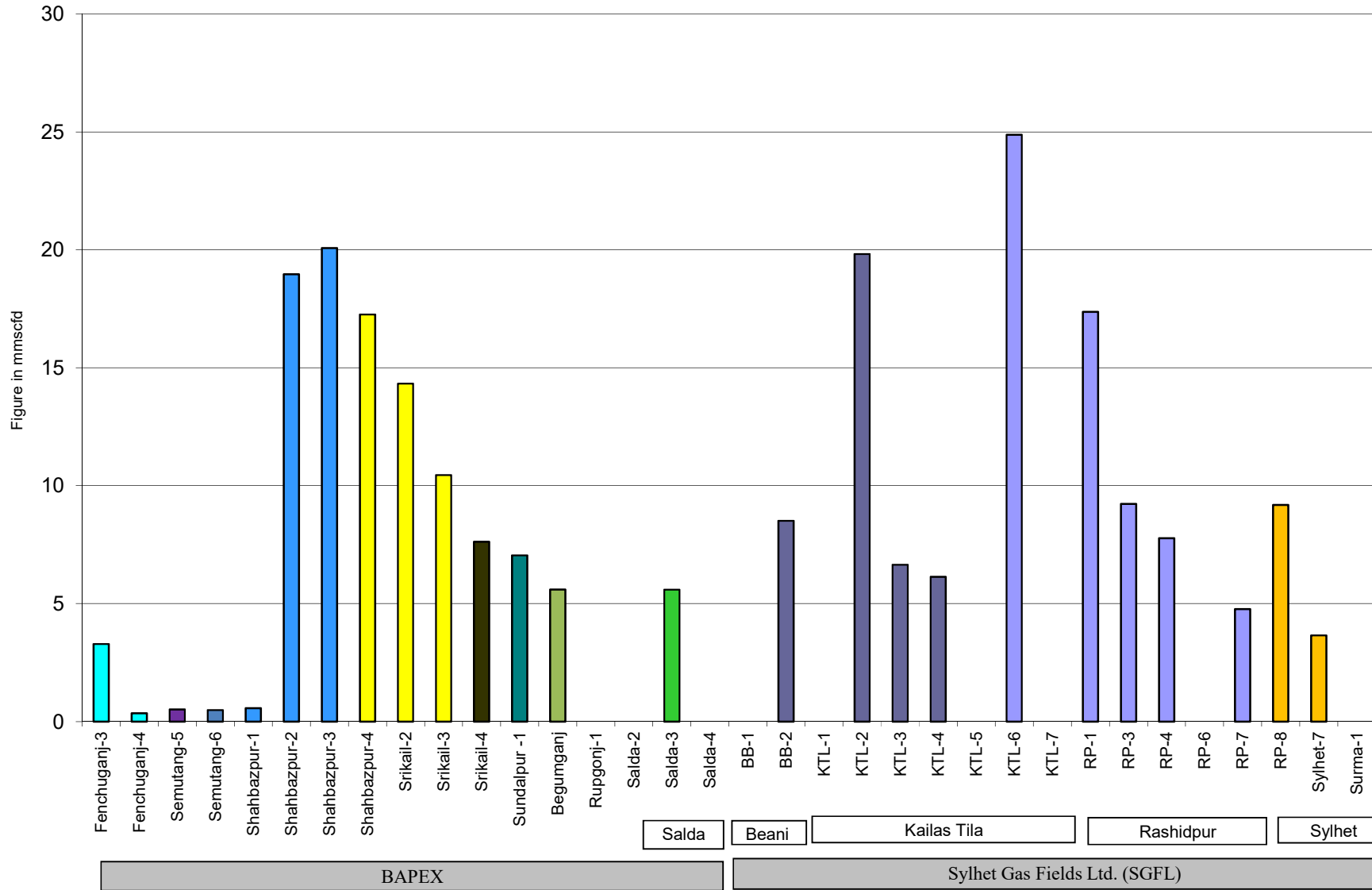
Figure in mmcf and % of total production

## Wellwise Daily Avg. Production- BGFCL October 2019

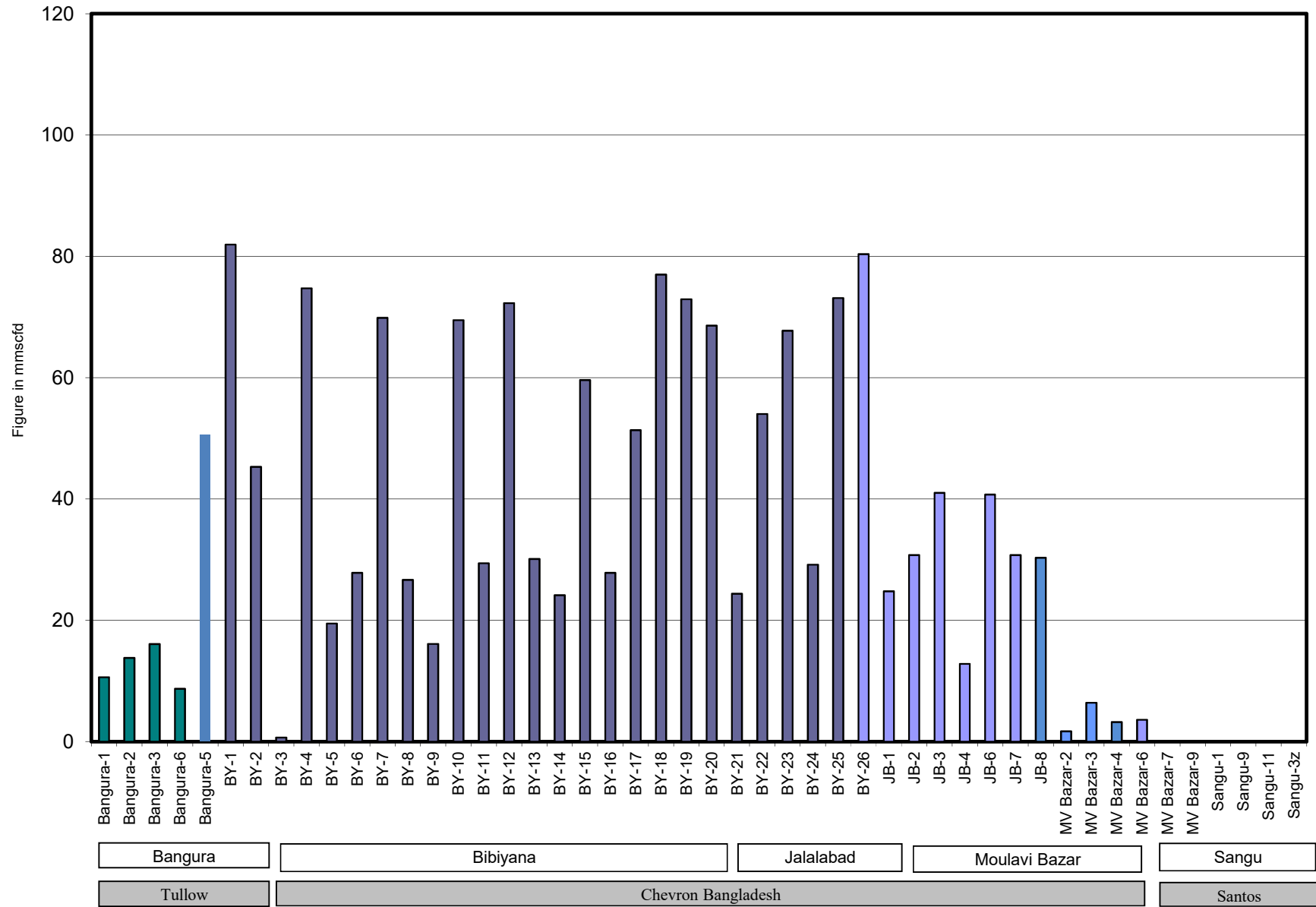


Bangladesh Gas Fields Co. Ltd. (BGFCL)

# Wellwise Daily Avg. Production- Bapex and SGFL October 2019

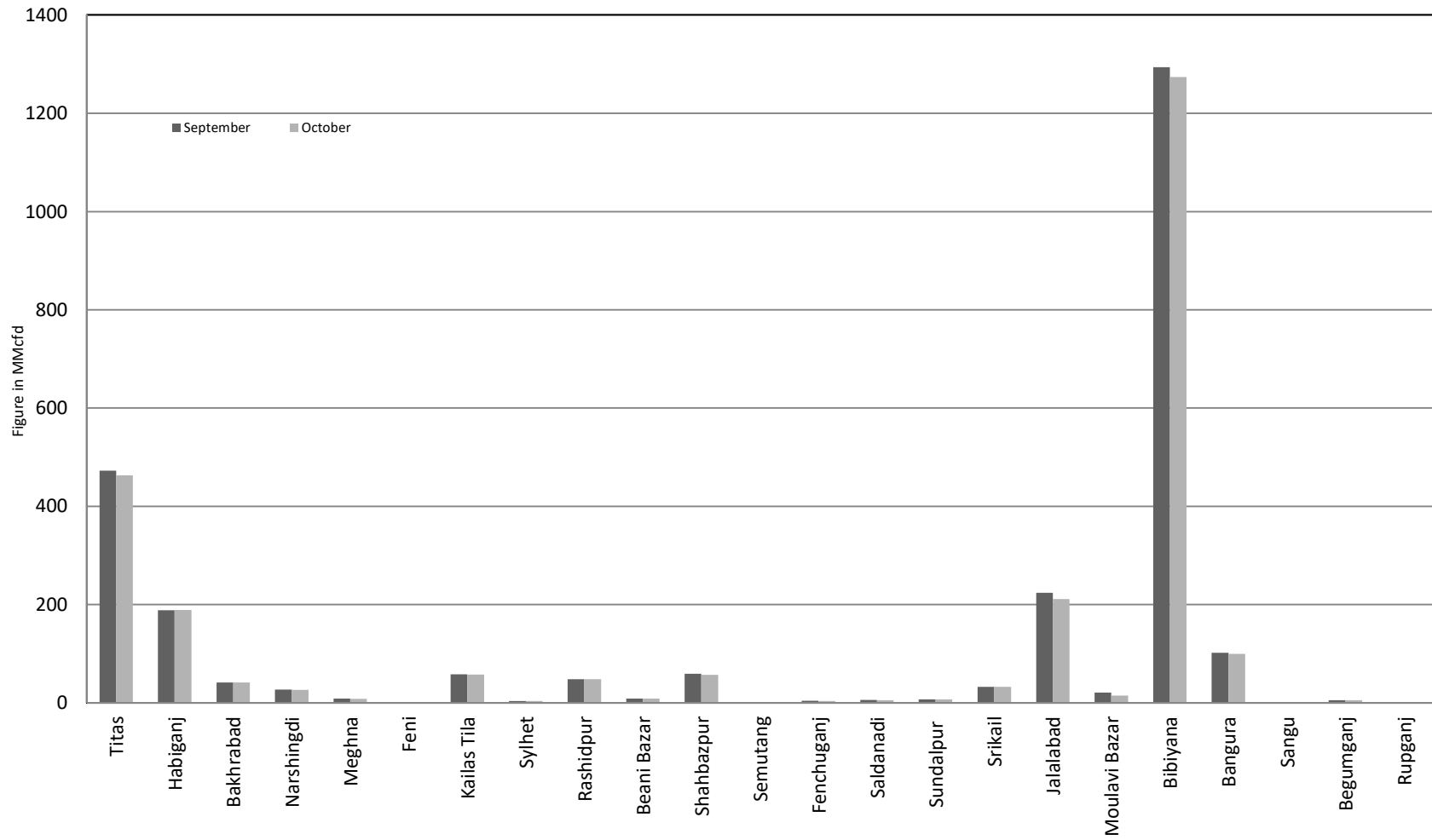


## Wellwise Daily Avg. Production- IOC and JVA Oct 2019

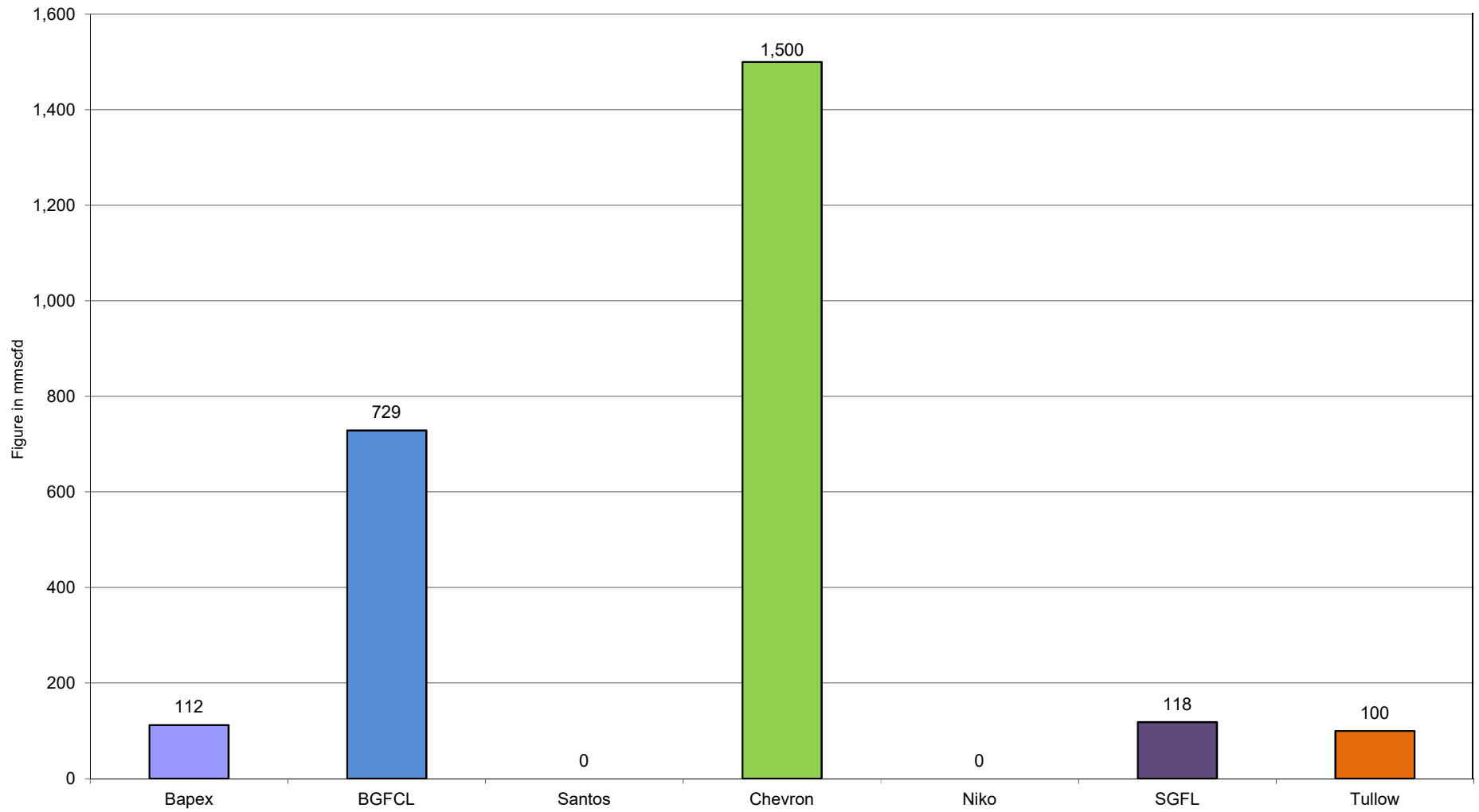




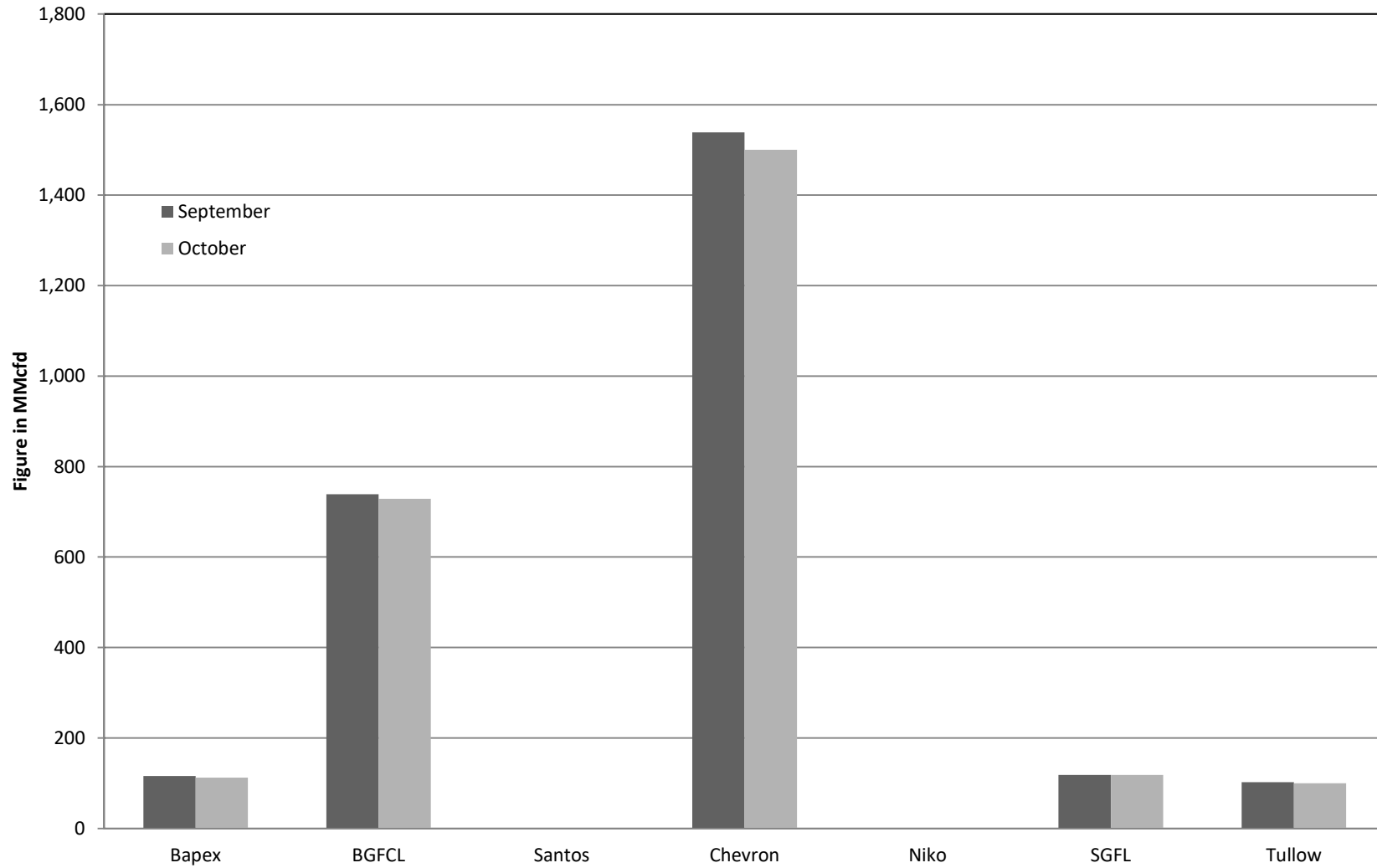
### Comparison of fieldwise daily avg. Gas production between September 2019 & October 2019



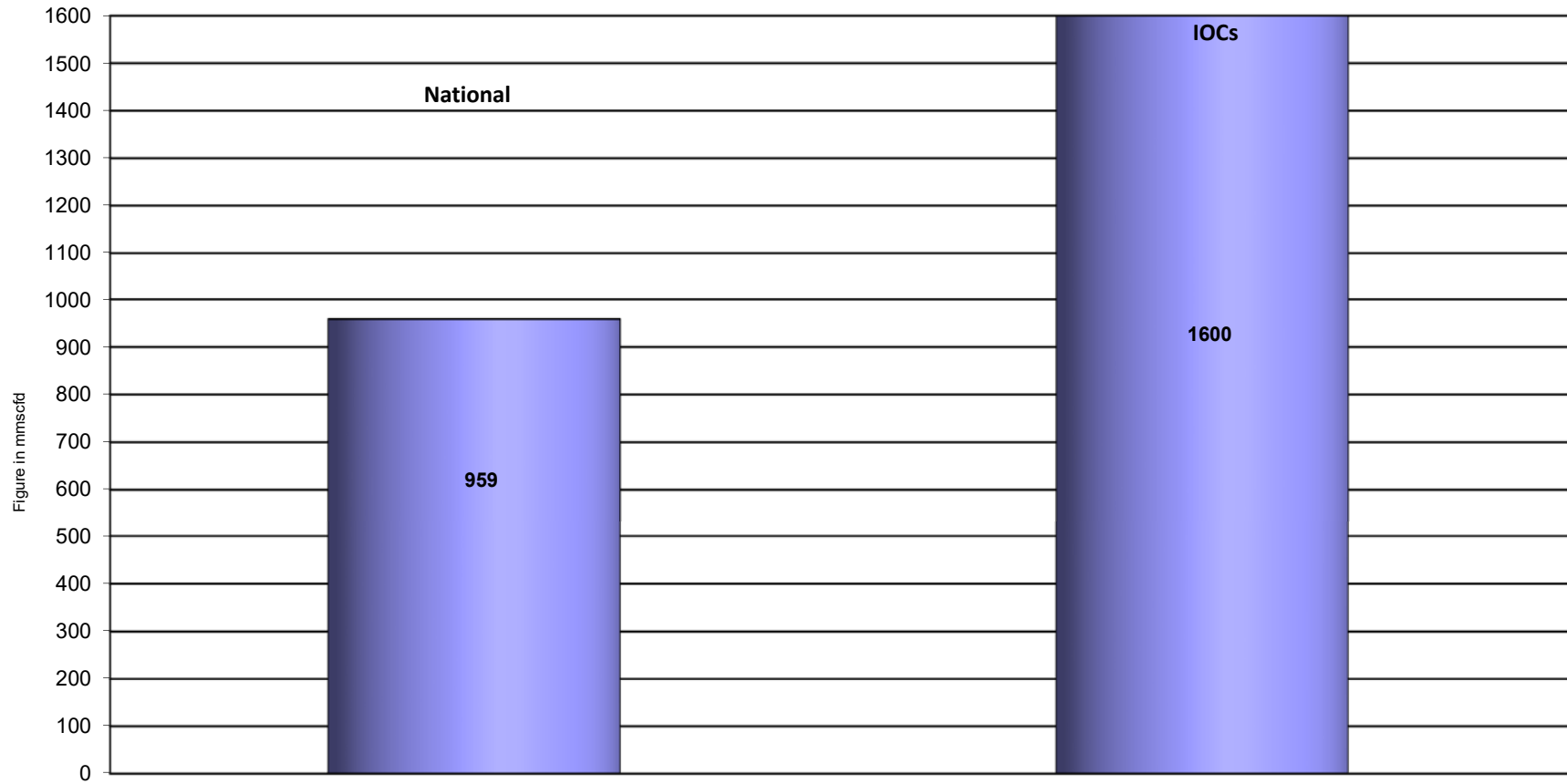
### Daily Avg. Production by Operators October 2019



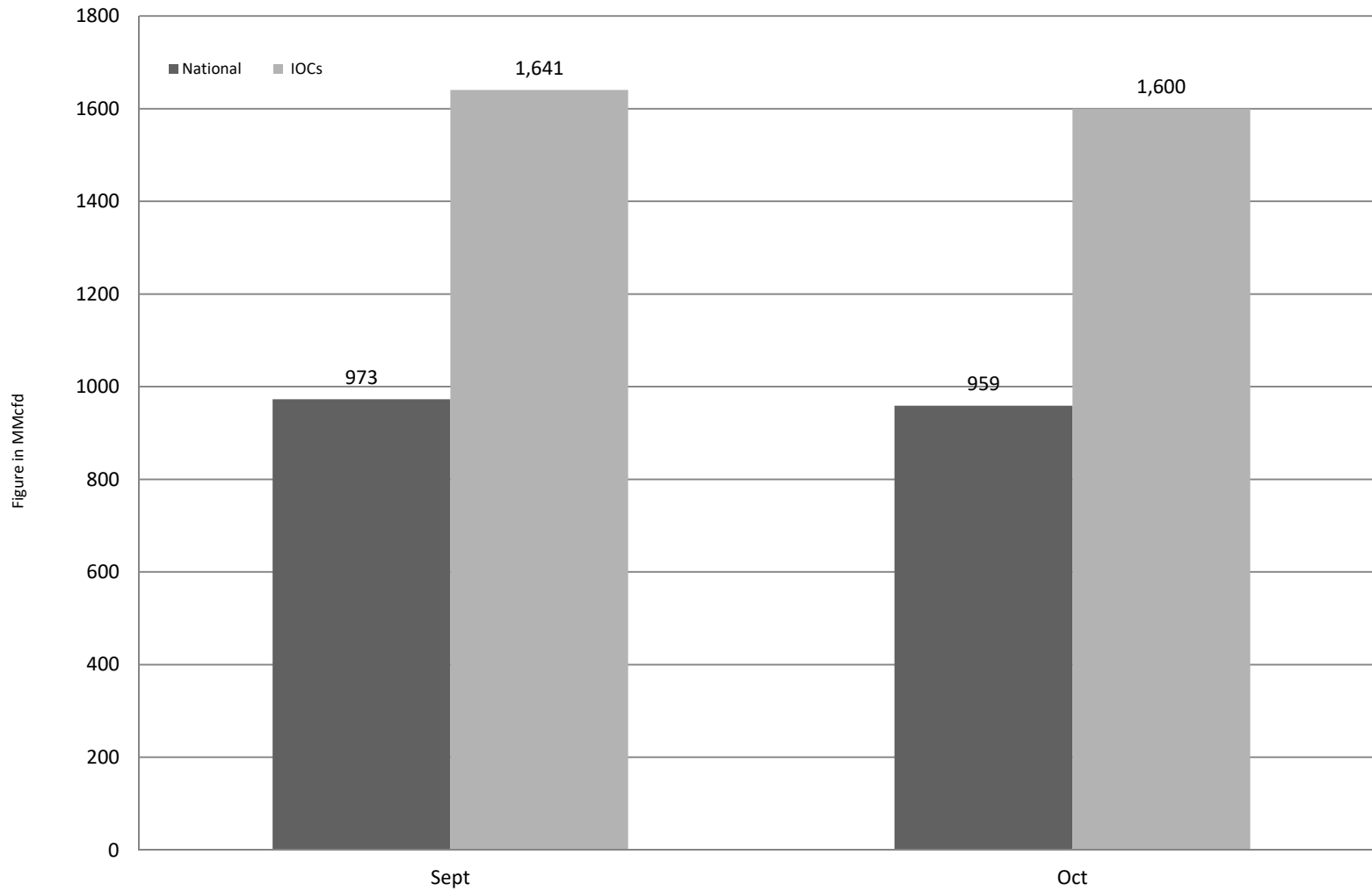
### Comparison of operatorwise daily avg. Gas production between September 2019 & October 2019



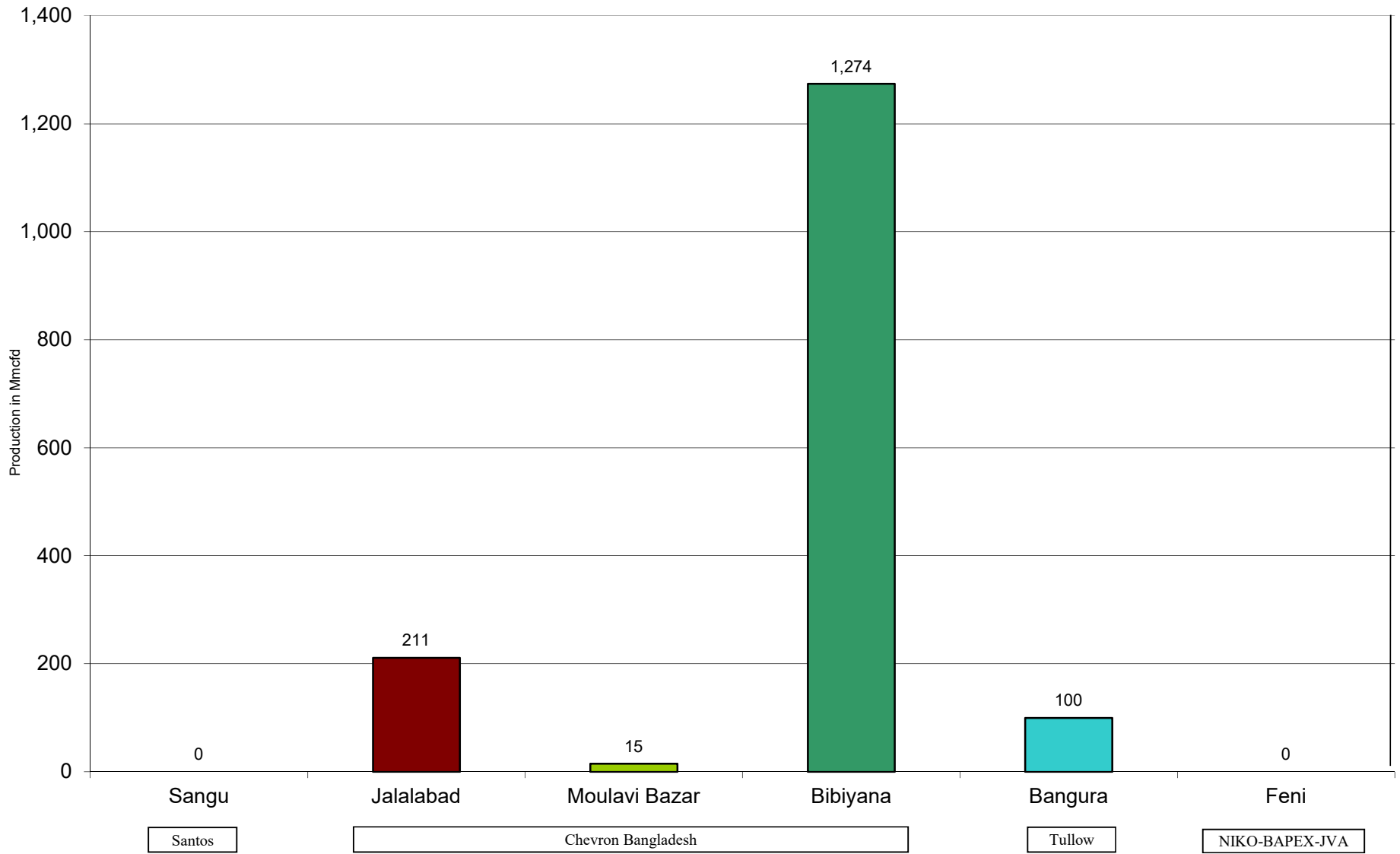
## Daily Avg. Production - National Vs. IOCs October 2019



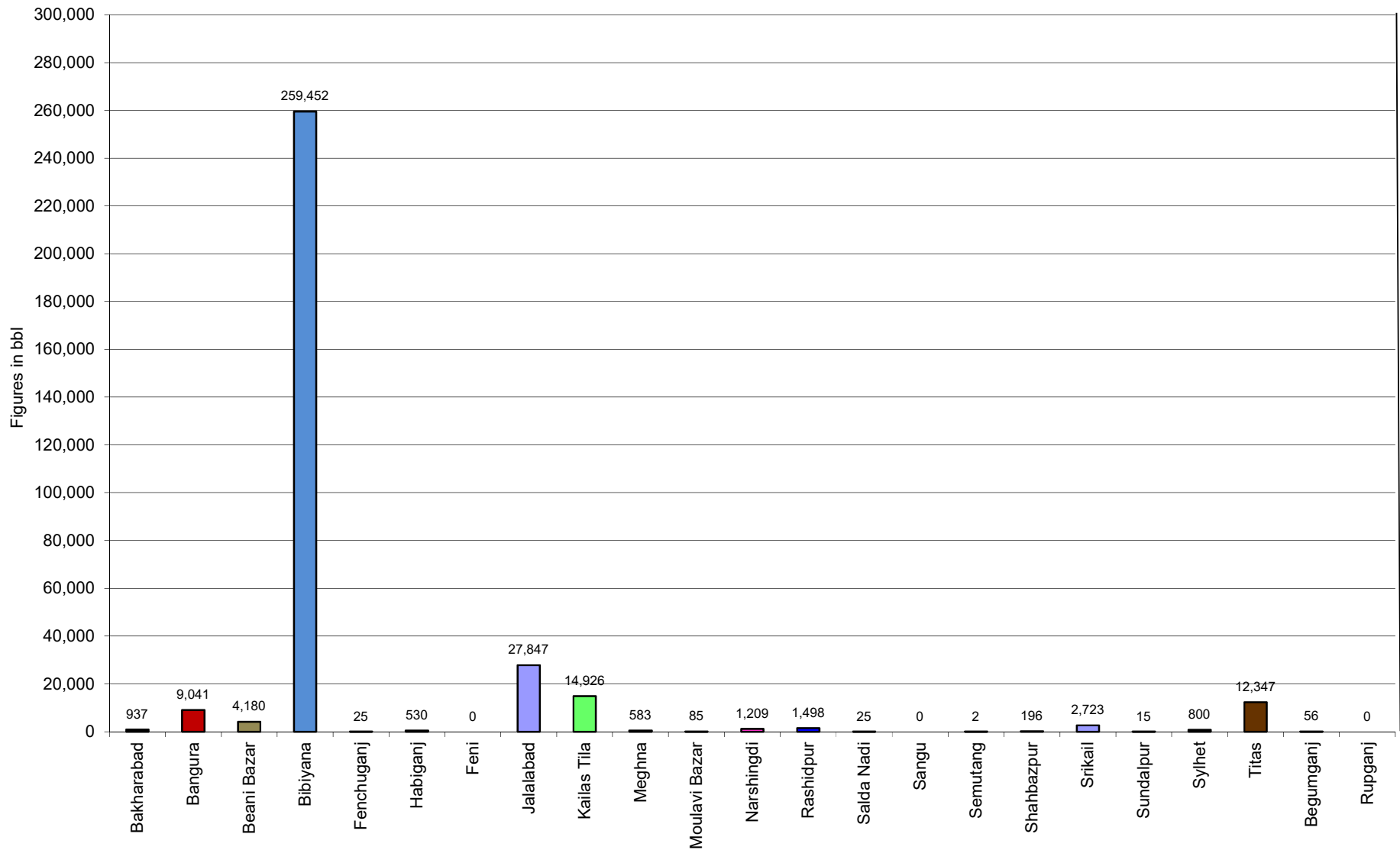
## Comparison of daily avg. Gas production - National vs IOC's between September 2019 & October 2019



## Daily Avg. Production - IOC and JVA October 2019



## Monthly Condensate Production October 2019



## Field wise Coal Reserve in Bangladesh

SI No.	Coal Basins	Proved (Mt)	Indicated (Mt)	Inferred (Mt)	Total (Mt)
1	Barapukuria	114.32	211.33	21.06+(43-64)*	346.71+(43-64)*
2	Phulbari	288	226	58	572
3	Khalashpir	-	297.57	225.92	523.49
4	Jamalganj	-	-	1053.9	1053.9
5	Dighipara	-	105	495	600
	<b>Total</b>	<b>402.32</b>	<b>839.9</b>	<b>1896.88-1917.88</b>	<b>3139.10-3160.10</b>

*\*Resources of VI Seam in second syncline are towards SW of main basin, after Wardell Armstrong*

*NOTE: Reserve Figure based on Coal Sector Development Strategy (Final), HCU, PwC*



## Summary of Reserve and Production of Barapukuria Coal Mine As of 31 October 2019

<b>Coal Initially Place (Proven + Probable)</b>	<b>346,710 kT</b>	<b>346.71 MT</b>
<b>Total Reserve of Seam VI</b>	<b>285,410 kT</b>	<b>285.41 MT</b>
<b>Recoverable from Seam VI Central part(Proven + Probable)</b>	<b>16,540 kT*</b>	<b>16.54 MT</b>
<b>Coal Production in October 2019</b>	<b>3.46 kT</b>	<b>0.00 MT</b>
<b>Cumulative Production as of October 2019</b>	<b>11,057 kT</b>	<b>11.06 MT</b>
<b>Remaining Reserve</b>	<b>5,483 kT</b>	<b>5.48 MT</b>

*NOTE: Reserve figure based on Mines and Minerals Development Report ,HCU PwC*

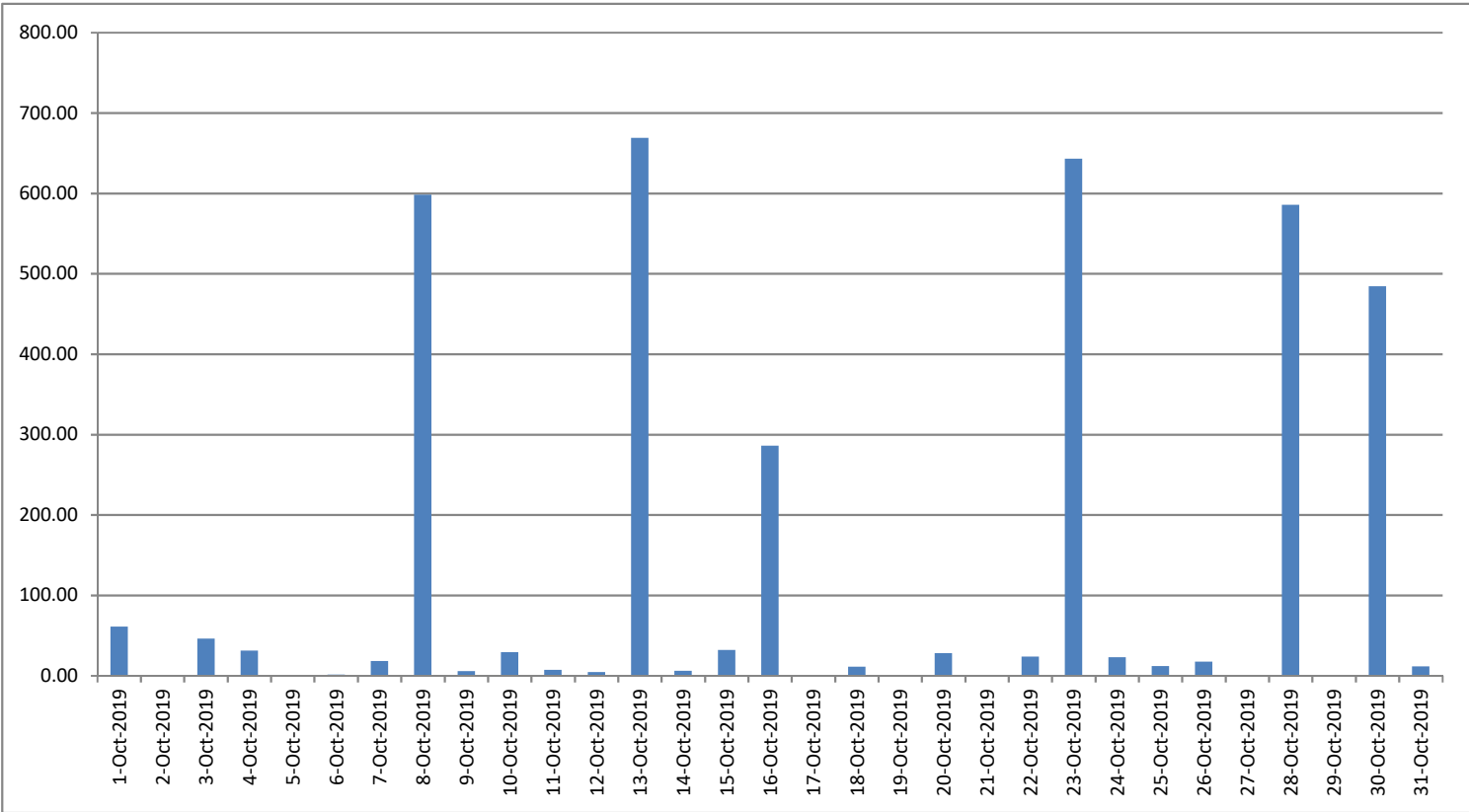
\*Figure from BCMCL, M/S Wardell Armstrong. According to Mines and Minerals Development Report ,HCU, PwC this figure is 64.8 Mt

**Barapukuria Coal Mine-MPM and P Contract (BCMCL)**  
**Measurement Record: Surface Belt Weigher**  
**Measurement Period: October 2019**

Day wise data	Consortium Daily Output (ton)	Consortium Cumulative Total	BCMCL Daily Output	BCMCL Cumulative Total	Remarks
1-Oct-2019	61.00	61.00	61.00	61.00	
2-Oct-2019	0.00	61.00	0.00	61.00	
3-Oct-2019	46.25	107.25	46.25	107.25	
4-Oct-2019	31.00	138.25	31.00	138.25	
5-Oct-2019	0.00	138.25	0.00	138.25	
6-Oct-2019	1.25	139.50	1.25	139.50	
7-Oct-2019	18.25	157.75	18.25	157.75	
8-Oct-2019	598.50	756.25	598.50	756.25	
9-Oct-2019	5.50	761.75	5.50	761.75	
10-Oct-2019	29.25	791.00	29.25	791.00	
11-Oct-2019	7.25	798.25	7.25	798.25	
12-Oct-2019	4.25	802.50	4.25	802.50	
13-Oct-2019	669.25	1,471.75	669.25	1,471.75	
14-Oct-2019	6.00	1,477.75	6.00	1,477.75	
15-Oct-2019	31.75	1,509.50	31.75	1,509.50	
16-Oct-2019	286.00	1,795.50	286.00	1,795.50	
17-Oct-2019	0.00	1,795.50	0.00	1,795.50	
18-Oct-2019	11.25	1,806.75	11.25	1,806.75	
19-Oct-2019	0.00	1,806.75	0.00	1,806.75	
20-Oct-2019	28.00	1,834.75	28.00	1,834.75	
21-Oct-2019	0.00	1,834.75	0.00	1,834.75	
22-Oct-2019	23.75	1,858.50	23.75	1,858.50	
23-Oct-2019	643.00	2,501.50	643.00	2,501.50	
24-Oct-2019	23.00	2,524.50	23.00	2,524.50	
25-Oct-2019	11.75	2,536.25	11.75	2,536.25	
26-Oct-2019	17.25	2,553.50	17.25	2,553.50	
27-Oct-2019	0.00	2,553.50	0.00	2,553.50	
28-Oct-2019	585.75	3,139.25	585.75	3,139.25	
29-Oct-2019	0.00	3,139.25	0.00	3,139.25	
30-Oct-2019	484.50	3,623.75	484.50	3,623.75	
31-Oct-2019	11.50	3,635.25	11.50	3,635.25	

less Difference in Water Content:	178.13
Less Out of Seam dilution:	0
Water treatment plant coal	0
<b>Output (tons) measured by Belt Weigher:</b>	<b>3,457.12</b>
Tonnes mined in DARR	0
Net Output after removing DARR	3,457.12

# Barapukuria Coal Mine Daywise Data Graph for October 2019



আসুন, যানবাহনসমূহকে অটোগ্যাসে রূপান্তর করি...

জাতীয় সম্পদ প্রাকৃতিক গ্যাস সাশ্রয় করি...

facebook

"Energy misused, cannot be excused"

আমাদের ঘরে যদি এখনো কয়েল স্টার্টার যুক্ত টিউবলাইট থেকে থাকে, আসুন আজই LED টিউবলাইট দ্বারা প্রতিস্থাপন করি।

HYDROCARBON UNIT ON FACEBOOK

“আসুন আমাদের জাতীয় সম্পদ প্রাকৃতিক গ্যাস সাশ্রয় করি”

১। **LPG** ব্যবহার করুন..

অবৈধ গ্যাস সংযোগ থেকে বিরত থাকুন

২। **CNG** নয়, অকটেন দিয়ে গাড়ি চালান...

গাড়ির ইঞ্জিনের আয়ুষ্কাল বাড়ান

চলুন আজই যানবাহনসমূহ AUTO GAS (LPG) এ রূপান্তর করি...

- \* CNG এর তুলনায় LPG কনভারশনে ৫০% কম খরচ হয়
- \* ৩-৫ মিনিটে ট্যাংকে ফুয়েল ভর্তি হয়, লম্বা লাইনে দাঁড়িয়ে অপেক্ষা করার প্রয়োজন পরে না
- \* CNG এর তুলনায় সিলিন্ডারে জায়গা, ওজন ও প্রেশার কম দরকার
- \* রক্ষণাবেক্ষণের খরচ কম
- \* পেট্রলের তুলনায় AUTO GAS -এ খরচ প্রায় ৫০% কম
- \* গ্যাসোলিন ও ডিজেলের তুলনায় নিঃসরণ কম

# Hydrocarbon Unit

Energy & Mineral Resources Division  
Ministry of Power, Energy & Mineral Resources  
153, Pioneer Road  
Segunbagicha, Dhaka-1000  
www.hcuro.gov.bd