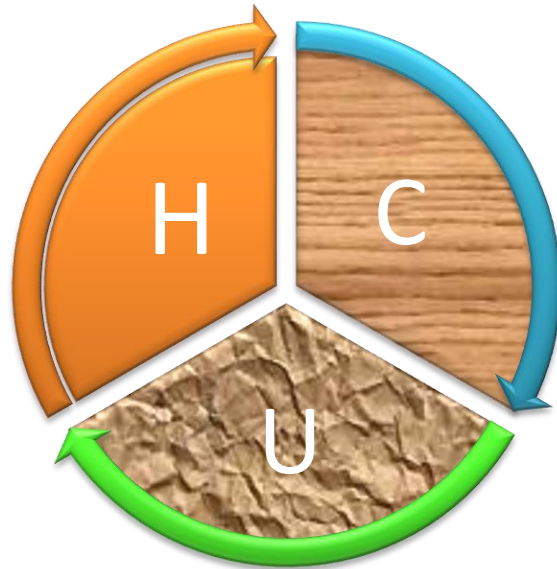


মুজিববর্ষ উপলক্ষে প্রকাশিত



Gas and Coal Reserve & Production

February 2021



HYDROCARBON UNIT
Energy and Mineral Resources Division

Gas Reserve & Production at a glance

Gas Initially in Place (GIIP)	:	40,092.19 Bcf
Recoverable (2P)	:	30,055.40 Bcf
Cumulative Production as of February 2021	:	18,387.75 Bcf
Remaining Reserve up to February 2021	:	11,667.65 Bcf
Gas Production in February 2021	:	69.03 Bcf
National Oil Company (NOC's) production in February 2021	:	23.12 Bcf
International Oil Company (IOC's) production in February 2021	:	45.91 Bcf
No. of National Oil Company (NOC's) in February 2021	:	3 (BGFCL, BAPEX, SGFL)
No. of International Oil Company (IOC's) in February 2021	:	2 (Chevron, Tullow)
Total gas fields of National Oil Company (NOC) in February 2021	:	21
Total gas fields of International Oil Company (IOC) in February 2021	:	5
Total gas wells of National Oil Company (NOC) in February 2021	:	115
Total gas wells of International Oil Company (IOC) in February 2021	:	60
No. of National Oil Company (NOC's) gas production well in February 2021	:	70
No. of Intl. Oil Company (IOC's) gas production well in February 2021	:	42
No. of National Oil company (NOC's) suspended well in February 2021	:	45
No. of International Oil company (IOC's) suspended well in February 2021	:	18
Total LNG Import in February 2021	:	11.37 Bcf
Total LNG Import from July 2020 to February 2021	:	124.18 Bcf
Cumulative LNG Import from August 2018	:	442.95 Bcf

Executive Summary of February 2021

Total gas and condensate Production in February 2021 were 69.03 Bcf and 250404.48 Bbl. During the previous month i.e. January 2021, gas and condensate production were 77.05 Bcf and 269093.50 Bbl and in the same month of the previous year i.e. February 2020, total gas and condensate production were 74.54 Bcf and 331257 Bbl respectively. The National Oil Companies (NOC's) and International Oil Companies (IOC's) Produced 23.12 Bcf and 45.91 Bcf gas respectively in February 2021. During the previous month i.e. January 2021, gas production by the National Oil Companies (NOC's) and International Oil Companies (IOC's) were 26.00 Bcf and 51.05 Bcf respectively. In the month of February 2021, Bibiyana gas field Produced 37.14 Bcf gas and it ranked top among the gas producers. Average production from the field during the month of February 2021 was 1327 Mmcfd. It is noted that Bibiyana gas field Produced 41.21 Bcf in January 2021.

During the month of February 2021 total production of condensate was 250404.48 Bbl compared to 269093.50 Bbl in the previous month i.e. January 2021. Bibiyana gas field Produced 179529 Bbl condensate and ranked top while Jalalabad ranked 2nd by producing 28160.44 Bbl.

In the month of February 2021 total coal production was 89,095.11 Ton. During the previous month i.e. January 2021 total coal production was 105511.85 Ton. It indicates that 16416.74 Ton less Coal was produced compared to the previous month.

Total LNG import in February 2021 was 11.37 Bcf. As a result, Total LNG Import in this FY is 124.18 Bcf and cumulative LNG import stands on 442.95 Bcf from August 2018.

Table of Contents

Gas Report	Page No.
Summary	1
summary of Reserve and Production	2
Production comparison between January 2021 & February 2021	3
Production per well & production, reserve ratio	4
Monthly Production by Fields & Wells up to February 2021	5-12
Monthly Condensate Production by Fields up to February 2021	13-14
Monthly Water Production by Fields from February 2021	15-16
Conditions of Field and Well up to February 2021	17-21
Chart	
Well-wise Production of All fields in 2019-20	22
Reserve, Production and Remaining Reserve as of February 2021	23
Daily Average Gas Production from January 2015 to February 2021	24
Field wise Daily Average Production as of February 2021	25
Well wise Daily Average Production-BGFCL as of February 2021	26
Well wise Daily Average Production-BAPEX and SGFL, February 2021	27
Well wise Daily Average Production-IOC and JVA, February 2021	28
Comparison of Field wise Avg Gas Production between January 21 & February 21	29
Daily Average Production by Operator, February 2021	30
Comparison of Operator wise daily Avg Production between January 21 & February 21	31
Daily Average Production – National vs IOC's, February 2021	32
Daily Avg Gas Production- National vs IOC's between January 21 & February 21	33
Daily Average Production IOC's and JVA, February 2021	34
Monthly Condensate Production, February 2021	35
Coal Report	
Summary	36-37
Barapukuria Coal Mine-MPM and P Contract (BCMCL)	38
Barapukuria Coal Mine Day wise Data Graph for February 2021	39

Summary of Reserve, Production & Import As of February 2021

Gas Initially Place (Proven + Probable)	40,092.19 Bcf	40.09 Tcf
Recoverable (Proven + Probable)	30,055.40 Bcf	30.06 Tcf
Gas Production in February 2021	69.03 Bcf	0.07 Tcf
Cumulative Gas Production as of February 2021	18,387.75 Bcf	18.39 Tcf
Remaining Reserve	11,667.65 Bcf	11.67 Tcf

NOTE: Reserve figure based on "Updated Report on Bangladesh Gas Reserve Estimation 2010", prepared by Gustavson Associates LLC, USA

Total LNG Import in February 2021	11.37 Bcf	0.01 Tcf
Total LNG Import from July 2020 to February 2021	124.18 Bcf	0.12 Tcf
Cumulative LNG Import from August 2018	442.95 Bcf	0.44 Tcf

Summary of Reserve and Production

(As of February 2021)

Gas Bcf



SI No.	Field	2P	GIIP	2P Reserve	Gas Prod. In Feb '21	Cum. Gas Production	Remaining Reserve	Cum. Condensate Production
1	Begumganj		47.0	33.0	0.17	5.9	27.1	2
2	Shahbazpur		415.0	261.0	0.71	66.7	194.3	10
3	Semutang		654.0	318.0	0.02	13.7	304.3	5
4	Fenchuganj		483.0	329.0	0.15	162.1	166.9	116
5	Salda Nadi		393.0	275.0	0.09	95.0	180.0	59
6	Srikail*		230.0	161.0	1.10	106.2	54.8	194
7	Sundalpur *		62.2	50.2	0.21	17.6	32.6	1
8	Rupganj		48.0	33.6	0.00	0.7	32.9	1
Bapex			2,332.2	1,460.8	2.45	467.9	992.9	388
9	Meghna		122.0	101.0	0.20	75.8	25.2	122
10	Narshingdi		405.0	345.0	0.71	220.5	124.5	448
11	Kamta		72.0	50.0	0.00	21.1	28.9	4
12	Habiganj		3,981.0	2,787.0	4.85	2,578.0	209.0	143
13	Bakhrabad		1,825.0	1,387.0	1.07	842.5	544.5	1,049
14	Titas		9,039.0	7,582.0	11.15	4,991.9	2,590.1	5,502
BGFCL			15,444.0	12,252.0	17.98	8,729.9	3,522.1	7,268
15	Sangu		976.0	771.0	0.00	489.5	281.5	37
Santos/Cairn			976.0	771.0	0.00	489.5	281.5	37
16	Bibiyana**		8,383.0	4,532.0	37.14	4,584.8	-52.8	27,413
17	Moulavi Bazar**		494.0	494.0	0.49	335.0	159.0	119
18	Jalalabad**		2,716.0	2,716.0	5.78	1,440.6	1,275.4	10,885
Chevron			11,593.0	7,742.0	43.41	6,360.3	1,381.7	38,418
19	Feni		185.0	130.0	0.00	63.0	67.0	110
Niko			185.0	129.6	0.00	63.0	66.6	110
20	Kailas Tila		3,463.0	2,880.0	1.14	768.9	2,111.1	8,157
21	Sylhet		580.0	408.0	0.11	217.3	190.7	816
22	Rashidpur		3,887.0	3,134.0	1.22	665.0	2,469.0	810
23	Chattak		677.0	474.0	0.00	25.8	448.2	4
24	Beani Bazar		225.0	137.0	0.22	101.8	35.2	1,671
SGFL			8,832.0	7,033.0	2.69	1,778.7	5,254.3	11,457
25	Bangura		730.0	621.0	2.50	498.4	122.6	1,277
Tullow			730.0	621.0	2.50	498.4	122.6	1,277
26	Kutubdia		65.0	46.0	0.00	0.0	46.0	0
Total			40,092.2	30,055.4	69.03	18,387.8	11,667.6	58,955

* Preliminary reserve estimated by BAPEX

** 2P reserve estimation by Petrobangla has crossed the limit. So 2P reserve is estimated as GIIP reserve now.

Production comparison between Jan'21 & Feb'21



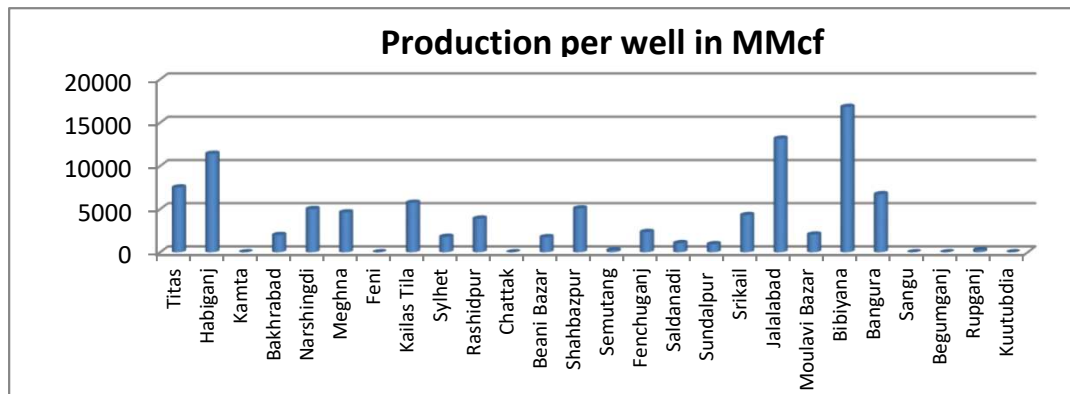
SI No.	Field	Gas Prod. (MMcf) in Jan'21	Daily Avg. (MMcfd) in Jan'21	Gas Prod. (MMcf) in Feb'21	Daily Avg. (MMcfd) in Feb'21
1	Begumganj	179	6	170	6
2	Shahbazpur	1074	35	711	25
3	Semutang	24	1	22	1
4	Fenchuganj	154	5	148	5
5	Salda Nadi	138	4	87	3
6	Srikail	1236	40	1104	39
7	Sundalpur	224	7	209	7
8	Rupganj	0	0	0	0
Bapex		3029	98	2451	88
9	Meghna	218	7	198	7
10	Narshingdi	825	27	712	25
11	Kamta	0	0	0	0
12	Habiganj	5336	172	4848	173
13	Bakhrabad	1209	39	1074	38
14	Titas	12400	400	11146	398
BGFCL		19988	645	17978	642
15	Sangu	0	0	0	0
Santos/Cairn		0	0	0	0
16	Bibiyana	41212	1329	37143	1327
17	Moulavi Bazar	562	18	494	18
18	Jalalabad	6461	208	5775	206
Chevron		48235	1556	43412	1550
19	Feni	0	0	0	0
Niko		0	0	0	0
20	Kailas Tila	1292	42	1142	41
21	Sylhet	117	4	105	4
22	Rashidpur	1333	43	1222	44
23	Chattak	0	0	0	0
24	Beani Bazar	245	8	219	8
SGFL		2987	96	2689	96
25	Bangura	2813	91	2498	89
Tullow		2813	91	2498	89
26	Kutubdia	0	0	0	0
Total		77051	2486	69027	2465

Production per well & production reserve ratio



HYDROCARBON UNIT
Energy & Mineral Resources Division

	No of production well	Total 2p- Recoverable	2019-20 production	production per well mmcf	production reserve ratio
Titas	26	7582	153.5	5903.85	0.020
Habiganj	8	2787	67.89	8486.25	0.024
Kamta	0	50	0	0.00	0.000
Bakhrabad	7	1387	15.02	2145.71	0.011
Narshingdi	2	345	9.09	4545.00	0.026
Meghna	1	101	3.1	3100.00	0.031
Feni	0	130	0	0.00	0.000
Kailas Tila	4	2880	20.19	5047.50	0.007
Sylhet	1	408	1.36	1360.00	0.003
Rashidpur	5	3134	17.53	3506.00	0.006
Chattak	0	474	0	0.00	0.000
Beani Bazar	1	137	3.06	3060.00	0.022
Shahbazpur	4	261	16.8	4200.00	0.064
Semutang	2	318	0.32	160.00	0.001
Fenchuganj	2	329	1.42	710.00	0.004
Saldanadi	2	275	2.17	1085.00	0.008
Sundalpur	1	50.2	2.6	2600.00	0.052
Srikail	3	161	11.19	3730.00	0.070
Jalalabad	7	2716	73.11	10444.29	0.027
Moulavi Bazar	4	494	5.33	1332.50	0.011
Bibiyana	26	4532	447.87	17225.77	0.099
Bangura	5	621	33.45	6690.00	0.054
Sangu	0	771	0	0.00	0.000
Begumganj	1	33	1.94	0.00	0.059
Rupganj	0	33.6	0	0.00	0.000
Kuutubdia	0	46	0	0.00	0.000
Total	112	30055.8	886.94	7919.11	0.030



Monthly Production by Field and Well upto February- 2021



HYDROCARBON UNIT
Energy & Mineral Resources Division

Figures in mmscf

Well	Jan	Feb	Mar	Apr	May	Jun	Jul	Aug	Sep	Oct	Nov	Dec	Total	Cumulative	2020	2019	2018
Field : Bakharabad																	
BKB-1	407	357											764	150,118	4,892	3,295	0
BKB-2	0	0											0	87,012	63	378	445
BKB-3	163	146											309	164,776	1,864	1,757	1,989
BKB-4	0	0											0	55,872	0	0	
BKB-5	141	127											268	62,539	1,703	1,757	1,822
BKB-6	0	0											0	50,069	0	0	0
BKB-7	0	0											0	107,750	0	0	0
BKB-8	252	227											480	132,275	2,969	2,565	2,017
BKB-9	170	150											320	26,198	2,171	2,585	3,332
BKB-10	75	67											142	5,923	1,015	1,092	1,297
Field Total:	1,209	1,074	0	0	0	0	0	0	0	0	0	0	2,283	842,531	14,678	13,429	10,903
Daily Avg.(mmscfd)	39	38	0	0	0	0	0	0	0	0	0	0	39		40	37	30
Field : Bangura																	
Bangura-1	339	304											643	97,676	3,640	4,138	4,615
Bangura-2	399	358											757	89,947	4,340	5,312	6,802
Bangura-3	489	438											927	108,807	4,958	6,195	7,265
Bangura-6	235	211											446	16,610	3,700	3,518	4,847
Bangura-5	1,351	1,186											2,538	185,378	15,921	16,177	8,410
Field Total:	2,813	2,498	0	0	0	0	0	0	0	0	0	0	5,311	498,417	32,559	35,340	31,940
Daily Avg.(mmscfd)	91	89	0	0	0	0	0	0	0	0	0	0	90		89	97	88
Field : Beani Bazar																	
BB-1	0	0	0	0	0	0	0	0	0	0	0	0	0	35,481	0	0	0
BB-2	245	219											464	66,275	2,940	3,135	3,276
Field Total:	245	219	0	0	0	0	0	0	0	0	0	0	464	101,756	2,940	3,135	3,276
Daily Avg.(mmscfd)	8	8	0	0	0	0	0	0	0	0	0	0	8		8	9	9
Field : Bibiyana																	
BY-1	2,188	1,947											4,135	427,758	26,283	29,455	21,743
BY-2	1,070	942											2,012	306,648	12,748	17,462	21,388
BY-3	1,350	954											2,304	256,461	14,326	4,562	6,249
BY-4	1,836	1,653											3,489	231,480	22,661	24,793	28,559
BY-5	122	512											634	184,210	5,441	6,168	6,131
BY-6	138	331											469	238,524	7,419	9,140	11,057
BY-7	1,791	1,610											3,400	296,438	21,873	26,581	23,155
BY-8	1,793	1,617											3,410	155,967	9,776	8,538	8,921
BY-9	1,768	1,585											3,353	140,596	7,462	5,164	4,093

Monthly Production by Field and Well upto February- 2021



HYDROCARBON UNIT
Energy & Mineral Resources Division

Figures in mmscf

Well	Jan	Feb	Mar	Apr	May	Jun	Jul	Aug	Sep	Oct	Nov	Dec	Total	Cumulative	2020	2019	2018			
BY-10	1,769	1,594											3,363	378,035	16,678	22,997	30,954			
BY-11	2,125	1,910											4,036	152,174	19,194	8,983	12,147			
BY-12	1,810	1,644											3,453	168,230	17,675	24,399	6,835			
BY-13	2,239	1,995											4,235	109,871	21,893	10,785	13,171			
BY-14	2	0											2	108,808	9,202	8,991	11,523			
BY-15	1,446	1,258											2,704	141,978	20,428	21,925	24,295			
BY-16	2,178	1,937											4,115	87,982	12,548	10,246	9,264			
BY-17	1,375	1,098											2,473	116,057	17,109	18,604	17,603			
BY-18	2,109	1,888											3,997	178,092	26,284	30,009	31,890			
BY-19	1,986	1,779											3,764	86,935	23,886	27,207	8,144			
BY-20	1,809	1,631											3,440	85,956	21,972	22,699	7,840			
BY-21	2,062	1,848											3,910	68,349	20,638	8,577	9,670			
BY-22	1,413	1,229											2,642	146,707	16,774	19,492	24,755			
BY-23	1,855	1,652											3,507	102,938	22,066	25,318	32,043			
BY-24	814	817											1,631	80,368	10,304	10,269	13,268			
BY-25	1,996	1,767											3,763	158,365	22,625	26,797	28,306			
BY-26	2,168	1,948											4,116	175,857	26,748	29,429	33,853			
Field Total:	41212	37143	0	0	0	0	0	0	0	0	0	0	78,354	4,584,784	454,012	458,589	446,855			
Daily Avg.(mmscfd)	1329	1,327	0	0	0	0	0	0	0	0	0	0	1,328		1,240	1,256	1,224			
Field : Chattak																				
Ch-1	Production Suspended													25,834						
Field Total:	0													25,834						
Daily Avg.(mmscfd)	0													0						
Field : Fenchuganj																				
Fenchuganj-2														0	38,169	0	0	0		
Fenchuganj-3	154	148														302	94,365	1,547	1,877	3,186
Fenchuganj-4	0	0														0	29,582	3	305	809
Field Total:	154	148	0	0	0	0	0	0	0	0	0	0	302	162,115	1,550	2,182	3,994			
Daily Avg.(mmscfd)	5	5	0	0	0	0	0	0	0	0	0	0	5		4	6	11			
Field : Feni																				
Feni-1	Production Suspended								0	0	0	34,214								
Feni-2	Production Suspended								0	0	0	6,119								
Feni-3	Production Suspended								0	0	0	2,176								

Monthly Production by Field and Well upto February- 2021



HYDROCARBON UNIT

Energy & Mineral Resources Division

Figures in mmscf

Well	Jan	Feb	Mar	Apr	May	Jun	Jul	Aug	Sep	Oct	Nov	Dec	Total	Cumulative	2020	2019	2018
Feni-4	Production Suspended								0	0				14,386			
Feni-5	Production Suspended								0	0				6,127			
Field Total:													63,023				
Daily Avg.(mmscfd)																	
Field :	Habiganj																
Hbj-1	0	192											192	286,075	3,651	4,124	2,207
Hbj-2	0	0											0	275,704	0	0	0
Hbj-3	805	676											1,481	399,537	9,952	10,947	13,155
Hbj-4	805	676											1,481	393,995	9,952	10,947	13,155
Hbj-5	715	646											1,360	316,631	8,620	8,977	9,497
Hbj-6	469	422											891	173,753	5,305	5,349	5,487
Hbj-7	1,210	1,090											2,300	283,361	13,671	14,272	14,533
Hbj-8	0	0											0	11,023	0	0	0
Hbj-9	0	0											0	52,652	0	0	0
Hbj-10	869	756											1,625	275,142	9,961	10,423	13,928
Hbj-11	463	392											855	110,177	6,094	6,920	9,579
Field Total:	5,336	4,848	0	0	0	0	0	0	0	0	0	0	10,184	2,578,050	67,206	71,959	81,540
Daily Avg.(mmscfd)	172	173	0	0	0	0	0	0	0	0	0	0	173		184	197	223
Field :	Jalalabad																
JB-1	849	762											1,611	265,795	9,224	9,191	10,469
JB-2	1,043	935											1,978	304,618	11,644	11,400	12,973
JB-3	1,373	1,231											2,604	373,523	15,132	15,263	17,399
JB-4	726	647											1,373	292,494	7,355	4,766	5,821
JB-6	1,385	1,232											2,618	91,778	14,814	15,021	17,364
JB-7	0	0											0	43,505	2,718	11,396	13,053
JB-8	1,085	968											2,053	68,854	11,643	11,228	12,793
Field Total:	6,461	5,775	0	0	0	0	0	0	0	0	0	0	12,236	1,440,566	72,531	78,265	89,872
Daily Avg.(mmscfd)	208	206	0	0	0	0	0	0	0	0	0	0	207		198	214	246
Field :	Kailas Tila																
KTL-1	0	0											0	205,181	0	371	462

Monthly Production by Field and Well upto February- 2021



HYDROCARBON UNIT
Energy & Mineral Resources Division

Figures in mmscf

Well	Jan	Feb	Mar	Apr	May	Jun	Jul	Aug	Sep	Oct	Nov	Dec	Total	Cumulative	2020	2019	2018
KTL-2	369	299											668	192,272	6,291	7,166	7,190
KTL-3	0	0											0	140,672	269	2,583	2,947
KTL-4	167	152											320	101,193	2,139	2,639	3,336
KTL-5	0	0											0	17,923	0	0	0
KTL-6	756	690											1,447	110,826	9,249	9,042	8,950
KTL-7	0	0											0	816	0	0	0
Field Total:	1,292	1,142	0	0	0	0	0	0	0	0	0	0	2,434	768,883	17,949	21,801	22,886
Daily Avg.(mmscfd)	42	41	0	0	0	0	0	0	0	0	0	0	41		49	60	63
Field : Kamta																	
Kamta-1	Production Suspended													21,139			
Field Total:			0	0	0	0	0	0	0	0	0	0		21,139			
Daily Avg.(mmscfd)																	
Field : Meghna																	
M-1	218	198											415	75,791	2,945	3,458	4,538
Field Total:	218	198	0	0	0	0	0	0	0	0	0	0	415	75,791	2,945	3,458	4,538
Daily Avg.(mmscfd)	7	7	0	0	0	0	0	0	0	0	0	0	7		8	9	12
Field : Moulavi Bazar																	
MV Bazar-2	57	34											91	56,116	1,217	770	2,302
MV Bazar-3	335	305											639	164,318	3,848	2,022	3,712
MV Bazar-4	72	71											144	59,524	266	1,047	3,103
MV Bazar-5	0	0												66			
MV Bazar-6	98	84											181	18,945	529	1,886	1,734
MV Bazar-7	0	0											0	5,648	0	4	21
MV Bazar-9	0	0											0	30,337	0	1	1
Field Total:	562	494	0	0	0	0	0	0	0	0	0	0	1,056	334,953	5,859	5,730	10,872
Daily Avg.(mmscfd)	18	18	0	0	0	0	0	0	0	0	0	0	18		16	16	30
Field : Narshingdi																	
N-1	502	445											946	157,164	5,960	5,663	6,181
N-2	324	268											591	63,354	3,661	3,732	3,705
Field Total:	825	712	0	0	0	0	0	0	0	0	0	0	1,538	220,518	9,621	9,395	9,886

Monthly Production by Field and Well upto February- 2021



HYDROCARBON UNIT
Energy & Mineral Resources Division

Figures in mmscf

Well	Jan	Feb	Mar	Apr	May	Jun	Jul	Aug	Sep	Oct	Nov	Dec	Total	Cumulative	2020	2019	2018	
Daily Avg.(mmscfd)	27	25	0	0	0	0	0	0	0	0	0	0	26		26	26	27	
Field : Rashidpur																		
RP-1	557	502											1,060	180,874	6,447	6,305	6,505	
RP-2	0	0											0	82,474	0	0		
RP-3	155	165											320	137,862	2,891	3,443	3,541	
RP-4	222	200											422	133,858	2,655	2,886	3,227	
RP-5	0	0											0	25,647	0	0		
RP-6	0	0											0	9,983	0	0	0	
RP-7	140	126											267	68,006	1,628	1,786	2,096	
RP-8	258	228											487	26,262	3,228	3,515	3,696	
Field Total:	1,333	1,222	0	0	0	0	0	0	0	0	0	0	2,555	664,967	16,849	17,936	19,065	
Daily Avg.(mmscfd)	43	44	0	0	0	0	0	0	0	0	0	0	43		46	49	52	
Field : Salda Nadi																		
Salda-1	0	0	0	0	0	0	0	0	0	0	0	0	0	36,904	0	0	0	
Salda-2	0	0	0	0	0	0	0	0	0	0	0	0	0	28,495	0	0	0	
Salda-3	108	72											180	29,282	1,712	1,809	1,067	
Salda-4	30	15											45	283	92	29	70	
Field Total:	138	87	0	0	0	0	0	0	0	0	0	0	225	94,964	1,804	1,838	1,137	
Daily Avg.(mmscfd)	4	3	0	0	0	0	0	0	0	0	0	0	4		5	5	3	
Field : Sangu																		
Sangu-1	0	0	0	0	0	0	0	0	0	0	0	0	0	116,191	0	0	0	
Sangu-3z	0	0	0	0	0	0	0	0	0	0	0	0	0	131,796	0	0	0	
Sangu-4	0	0	0	0	0	0	0	0	0	0	0	0	0	87,280				
Sangu-5	0	0	0	0	0	0	0	0	0	0	0	0	0	61,674				
Sangu-7	0	0	0	0	0	0	0	0	0	0	0	0	0	18,202				
Sangu-8	0	0	0	0	0	0	0	0	0	0	0	0	0	37,619				
Sangu-9	0	0	0	0	0	0	0	0	0	0	0	0	0	30,638	0	0	0	
Sangu-10	Production Suspended						0	0	0	0	0	0	0					
Sangu-11	0	0	0	0	0	0	0	0	0	0	0	0	0	6,067	0	0	0	
Field Total:	0	0	0	0	0	0	0	0	0	0	0	0	0	489,467	0	0	0	

Monthly Production by Field and Well upto February- 2021



HYDROCARBON UNIT
Energy & Mineral Resources Division

Figures in mmscf

Well	Jan	Feb	Mar	Apr	May	Jun	Jul	Aug	Sep	Oct	Nov	Dec	Total	Cumulative	2020	2019	2018	
Daily Avg.(mmscfd)	0	0	0	0	0	0	0	0	0	0	0	0	0		0	0	0	
Field : Semutang																		
Semutang-5	3												3	12,311	104	140	291	
Semutang-6	21	22											43	1,364	204	161	84	
Field Total:	24	22	0	0	0	0	0	0	0	0	0	0	46	13,676	308	301	375	
Daily Avg.(mmscfd)	1	1	0	0	0	0	0	0	0	0	0	0	1		1	1	1	
Field : Shahbazpur																		
Shahbazpur-1	0	0											0	22,486	254	874	134	
Shahbazpur-2	548	40											588	22,995	5,129	6,196	6,650	
Shahbazpur-3	526	569											1,095		6,301	6,668	5,222	
Shahbazpur-4	0	101											101	21,243	2,374	5,764	6,936	
Field Total:	1,074	711	0	0	0	0	0	0	0	0	0	0	1,784	66,723	14,058	19,501	18,943	
Daily Avg.(mmscfd)	35	25	0	0	0	0	0	0	0	0	0	0	30		38	53	52	
Field : Srikail																		
Srikail-2	369	302											672	48,353	4,450	5,288	5,154	
Srikail-3	255	220											475	42,654	3,360	3,988	4,273	
Srikail-4	612	582											1,194	15,226	2,561	3,026	2,971	
Field Total:	1,236	1,104	0	0	0	0	0	0	0	0	0	0	2,340	106,232	10,371	12,301	12,398	
Daily Avg.(mmscfd)	40	39	0	0	0	0	0	0	0	0	0	0	40		28	34	34	
Field : Sundalpur																		
Sundalpur -1	0	0	0	0	0	0	0	0	0	0	0	0	0	9,809	0	0	0	
Sundalpur -2	224	209											433	7,830	2,649	2,572	2,176	
Field Total:	224	209	0	0	0	0	0	0	0	0	0	0	433	17,639	2,649	2,572	2,176	
Daily Avg.(mmscfd)	7	7	0	0	0	0	0	0	0	0	0	0	7		7	7	6	
Field : Sylhet																		
Sylhet-3	Production Suspended													89,032				
Sylhet-6	Production Suspended													91,748				
Sylhet-7	117	105											222	29,963	1,377	1,373	1,622	
Surma-1													0	6,528	0	0	0	

Monthly Production by Field and Well upto February- 2021



HYDROCARBON UNIT
Energy & Mineral Resources Division

Figures in mmscf

Well	Jan	Feb	Mar	Apr	May	Jun	Jul	Aug	Sep	Oct	Nov	Dec	Total	Cumulative	2020	2019	2018
Field Total:	117	105	0	0	0	0	0	0	0	0	0	0	222	217,271	1,377	1,373	1,622
Daily Avg.(mmscfd)	4	4	0	0	0	0	0	0	0	0	0	0	4		4	4	4
Field :	Titas																
Titas-1	515	466											981	452,884	5,626	6,648	8,516
Titas-2	861	766											1,627	457,225	9,217	10,877	11,522
Titas-3	0	0											0	314,888	0	0	0
Titas-4	877	776											1,653	392,474	9,356	11,013	11,726
Titas-5	894	801											1,695	451,193	9,526	11,720	11,838
Titas-6	834	751											1,585	383,728	9,401	9,613	12,030
Titas-7	0	0											0	356,893	1,784	10,244	11,919
Titas-8	487	525											1,012	284,614	5,115	5,851	6,154
Titas-9	627	551											1,178	289,638	5,770	6,200	6,706
Titas-10	619	542											1,161	215,428	7,397	7,869	7,612
Titas-11	773	707											1,480	266,654	9,440	8,834	9,998
Titas-12	442	408											851	112,293	5,428	5,239	5,160
Titas-13	0	0											0	194,541	0	4,449	6,952
Titas-14	276	207											483	161,504	4,966	6,070	7,203
Titas-15	314	278											592	149,390	4,306	4,978	5,543
Titas-16	556	518											1,074	161,001	6,373	7,209	8,605
Titas-17	423	376											799	51,065	4,969	5,794	6,335
Titas-18	450	394											845	50,129	5,166	6,113	6,664
Titas-19	405	379											784	39,179	4,754	5,592	6,115
Titas-20	354	307											661	26,895	3,817	3,589	3,914
Titas-21	250	213											463	15,623	2,892	3,036	2,995
Titas-22	193	143											336	30,323	2,436	3,133	4,158
Titas-27	478	421											899	40,573	5,233	5,602	5,827
Titas-23	527	480											1,006	21,418	5,328	5,079	5,594
Titas-24	0	0											0	9,019	1,238	2,789	2,709
Titas-25	466	423											890	24,952	5,424	6,424	6,324
Titas-26	778	713											1,491	38,345	8,961	8,628	9,672
Field Total:	12,400	11,146	0	0	0	0	0	0	0	0	0	0	23,546	4,991,867	143,923	172,591	191,792
Daily Avg.(mmscfd)	400	398	0	0	0	0	0	0	0	0	0	0	399		393	473	525

Monthly Production by Field and Well upto February- 2021



HYDROCARBON UNIT
Energy & Mineral Resources Division

Figures in mmscf

Well	Jan	Feb	Mar	Apr	May	Jun	Jul	Aug	Sep	Oct	Nov	Dec	Total	Cumulative	2020	2019	2018
Field : Begumganj																	
Begumganj-3	179	170											349	5,908	1,940	2,150	593
Field Total:	179	170	0	0	0	0	0	0	0	0	0	0	349	5,908	1,940	2,150	593
Daily Avg.(mmscfd)	6	6	0	0	0	0	0	0	0	0	0	0	6		5	6	2
Field : Rupganj																	
Rupganj-1	0	0	0										0	679	0	0	0
Field Total:	0	0	0	0	0	0	0	0	0	0	0	0	0	679	0	0	0
Daily Avg.(mmscfd)	0	0	0	0	0	0	0	0	0	0	0	0	0		0	0	0
Grand Total (in Bcf)	77.05	69.03	0.00	0.00	0.00	0.00	0.00	0.00	0.00	0.00	0.00	0.00	146.1	18,387.75	875.1	933.8	964.7
Daily Avg.(mmscfd)	2,486	2,465	0	0	0	0	0	0	0	0	0	0	2,476		2,391	2,558	2,643

Monthly Condensate Production by Fields upto February 2021



Field Name	Jan	Feb	Mar	Apr	May	Jun	Jul	Aug	Sep	Oct	Nov	Dec	Total	Cumulative	2020	2019	2018	
													000' bbl					
Bakhrabad	1,633	1,454											3,087	1,049	18,004	8,201	5,022	
Daily Avg.	53	52	0	0	0	0	0	0	0	0	0	0	52		49	22	14	
Bangura	6,795	5,660											12,455	1,277	95,394	104,034	94,737	
Daily Avg.	219	202	0	0	0	0	0	0	0	0	0	0	211		261	285	260	
Beani Bazar	3,846	3,423											7,269	1,671	46,061	50,497	51,187	
Daily Avg.	124	122	0	0	0	0	0	27	0	0	0	0	123		126	138	140	
Bibiyana	204,519	179,529											384,048	27,413	2,780,633	3,094,275	3,267,318	
Daily Avg.	6,597	6,412	0	0	0	0	0	0	0	0	0	0	6,509		7,597	8,477	8,952	
Chattak	0	0	0	0	0	0	0	0	0	0	0	0	0	4	0	0	0	
Daily Avg.	0	0	0	0	0	0	0	0	0	0	0	0	0		0	0	0	
Fenchuganj	61	40											101	116	527	738	1,625	
Daily Avg.	2	1	0	0	0	0	0	0	0	0	0	0	2		1	2	4	
Feni	0	0	0	0	0	0	0	0	0	0	0	0	0	110	0	0	0	
Daily Avg.	0	0	0	0	0	0	0	0	0	0	0	0	0		0	0	0	
Habiganj	398	312											710	143	5,510	7,233	5,612	
Daily Avg.	13	11	0	0	0	0	0	0	0	0	0	0	12		15	20	15	
Jalalabad	32,269	28,160											60,429	10,885	367,161	318,424	367,160	
Daily Avg.	1,041	1,006	0	0	0	0	0	0	0	0	0	0	1,024		1,003	872	1,006	
Kailas Tila	0	14,528											14,528	8,157	177,210	170,713	189,620	
Daily Avg.	0	519	0	0	0	0	0	0	0	0	0	0	246		484	468	520	
Kamta	Production Suspended										0	0		4				
Daily Avg.	0										0	0		0		0	0	0
Meghna	452	392											844	122	6,652	7,098	7,947	
Daily Avg.	15	14	0	0	0	0	0	0	0	0	0	0	14		18	19	22	
Moulavi Bazar	74	85											159	119	1,262	745	856	
Daily Avg.	2	3	0	0	0	0	0	0	0	0	0	0	3		3	2	2	

Monthly Condensate Production by Fields upto February 2021

Field Name	Jan	Feb	Mar	Apr	May	Jun	Jul	Aug	Sep	Oct	Nov	Dec	Total	Cumulative	2020	2019	2018
													000' bbl				
Narshingdi	1,180	980											2,160	448	13,907	14,029	15,797
Daily Avg.	38	35	0	0	0	0	0	0	0	0	0	0	37		38	38	43
Rashidpur	1,195	1,117											2,312	810	15,049	16,268	14,393
Daily Avg.	39	40	0	0	0	0	0	0	0	0	0	0	39		41	45	39
Saldanadi	16	12											29	59	240	302	137
Daily Avg.	1	0	0	0	0	0	0	0	0	0	0	0	0		1	1	0
Sangu	0	0	0	0	0	0	0	0	0	0	0	0	0	37	0	0	0
Daily Avg.	0	0	0	0	0	0	0	0	0	0	0	0	0		0	0	0
Semutang	0	0	0	0	0	0	0	0	0	0	0	0	0	5	0	4	26
Daily Avg.	0	0	0	0	0	0	0	0	0	0	0	0	0		0	0	0
Shahbazpur	190	126											316	10	1,839	2,034	2,488
Daily Avg.	6	4	0	0	0	0	0	0	0	0	0	0	5		5	6	7
Srikail	5,607	5,142											10,749	194	21,213	34,193	33,765
Daily Avg.	181	184	0	0	0	0	0	0	0	0	0	0	182		58	94	93
Sundalpur	8	9											16	1	89	172	121
Daily Avg.	0	0	0	0	0	0	0	0	0	0	0	0	0		0	0	0
Sylhet	656	644											1,300	816	8,982	9,691	10,277
Daily Avg.	21	23	0	0	0	0	0	0	0	0	0	0	22		25	27	28
Titas	10,145	8,740											18,885	5,502	117,408	141,979	159,803
Daily Avg.	327	312	0	0	0	0	0	0	0	0	0	0	320		321	389	438
Begumganj	50	51											101	2	380	711	201
Daily Avg.	2	2	0	0	0	0	0	0	0	0	0	0	2		1	2	1
Rupganj	0	0	0	0	0	0	0	0	0	0	0	0	0	1	0	0	0
Daily Avg.	0	0	0	0	0	0	0	0	0	0	0	0	0		0	0	0
Total (000'bbl)	269	250	0	0	0	0	0	0	0	0	0	0	519	58,955	3,678	3,981	4,228
Daily Avg. (000'bbl)	8.7	8.9	0.0	0.0	0.0	0	0.0	0.0	0.0	0.0	0	0	9		10.0	10.9	11.6

Note: Historical condensate figure of Sangu available from 2006. Sylhet available from August 1964

Monthly Water Production by Fields in February 2021



HYDROCARBON UNIT
Energy & Mineral Resources Division

Field Name	Jan	Feb	Mar	Apr	May	Jun	Jul	Aug	Sep	Oct	Nov	Dec	Total	2020	2019
Bakhrabad	2,004	1,858											3,862	23,912	25,025
Daily Avg.	65	66	0	0	0	0	0	0	0	0	0	0	65	65	69
Bangura	7,749	7,839											15,588	42,021	38,297
Daily Avg.	250	280	0	0	0	0	0	0	0	0	0	0	264	115	105
Beani Bazar	16,789	15,152											31,941	176,527	130,468
Daily Avg.	542	541	0	0	0	0	0	0	0	0	0	0	541	482	357
Bibiyana	20,534	15,983											36,517	209,941	194,287
Daily Avg.	662	571	0	0	0	0	0	0	0	0	0	0	619	574	532
Chattak	0	0	0	0	0	0	0	0	0	0	0	0	0	0	0
Daily Avg.	0	0	0	0	0	0	0	0	0	0	0	0	0	0	0
Fenchuganj	3,147	3,296											6,443	28,653	34,864
Daily Avg.	102	118	0	0	0	0	0	0	0	0	0	0	109	78	96
Feni	0	0	0	0	0	0	0	0	0	0	0	0	0	0	0
Daily Avg.	0	0	0	0	0	0	0	0	0	0	0	0	0	0	0
Habiganj	1,658	1,973											3,631	15,442	12,931
Daily Avg.	53	70	0	0	0	0	0	0	0	0	0	0	62	42	35
Jalalabad	5,501	4,885											10,386	72,877	57,962
Daily Avg.	177	174	0	0	0	0	0	0	0	0	0	0	176	199	159
Kailas Tila	0	15,554											15,554	100,033	68,693
Daily Avg.	0	556	0	0	0	0	0	0	0	0	0	0	264	273	188
Kamta	0	0	0	0	0	0	0	0	0	0	0	0	0	0	0
Daily Avg.	0	0	0	0	0	0	0	0	0	0	0	0	0	0	0
Meghna	1,591	1,455											3,046	16,447	8,048
Daily Avg.	51	52	0	0	0	0	0	0	0	0	0	0	52	45	22
Moulavi Baza	237	214											451	6,968	5,447
Daily Avg.	8	8	0	0	0	0	0	0	0	0	0	0	8	19	15
Narshingdi	864	730											1,594	10,191	10,069
Daily Avg.	28	26	0	0	0	0	0	0	0	0	0	0	27	28	28
Rashidpur	21,105	19,642											40,747	144,432	158,452
Daily Avg.	681	702	0	0	0	0	0	0	0	0	0	0	691	395	434
Saldanadi	192	103											295	1,977	1,570
Daily Avg.	6	4	0	0	0	0	0	0	0	0	0	0	5	5	4

Monthly Water Production by Fields in February 2021



HYDROCARBON UNIT
Energy & Mineral Resources Division

Field Name	Jan	Feb	Mar	Apr	May	Jun	Jul	Aug	Sep	Oct	Nov	Dec	Total	2020	
Sangu	0	0	0	0	0	0	0	0	0	0	0	0	0	0	0
Daily Avg.	0	0	0	0	0	0	0	0	0	0	0	0	0	0	0
Semutang	55	84											139	911	966
Daily Avg.	2	3	0	0	0	0	0	0	0	0	0	0	2	2	3
Shahbazpur	1,328	878											2,206	17,316	23,785
Daily Avg.	43	31	0	0	0	0	0	0	0	0	0	0	37	47	65
Srikail	1,565	1,402											2,967	10,292	19,783
Daily Avg.	50	50	0	0	0	0	0	0	0	0	0	0	50	28	54
Sundalpur	35	34											69	233	354
Daily Avg.	1	1	0	0	0	0	0	0	0	0	0	0	1	1	1
Sylhet	10,331	9,351											19,682	114,597	39,488
Daily Avg.	333	334	0	0	0	0	0	0	0	0	0	0	334	313	108
Titas	22,807	19,695											42,502	287,912	517,843
Daily Avg.	736	703	0	0	0	0	0	0	0	0	0	0	720	787	1,419
Begumganj	65	63											128	418	738
Daily Avg.	2	2	0	0	0	0	0	0	0	0	0	0	2	1	2
Rupganj	0	0	0	0	0	0	0	0	0	0	0	0	0	0	0
Daily Avg.	0	0	0	0	0	0	0	0	0	0	0	0	0	0	0
Total (000'bl	117,558	120,191	0	0	0	0	0	0	0	0	0	0	237,748	1,281,101	1,349,070
Daily Avg. (000'bbl)	3,792	4,293	0	0	0	0	0	0	0	0	0	0	4,030	3,500	3,696

Conditions of Field and Well upto February 2021



Well	company	well type	Discovery	production start	Drilled depth (ft)	Pressure	Pressure type	Completion Zone
Field : Bakharabad								
BKB-1	BGFCL	Vertical	1969	June,1969	9309		FWHP	J
BKB-2	BGFCL	Directional	1969	October,1981	7496	248-274	FWHP	G
BKB-3	BGFCL	Directional	1969	April,1982	9339	356-412	FWHP	G
BKB-4	BGFCL	Directional	1969	June,1982	9430			D
BKB-5	BGFCL	Directional	1969	Sept,1982	9675	1555-1646	FWHP	B
BKB-6	BGFCL	Directional	1969	March,1989	8785			J
BKB-7	BGFCL	Directional	1969	July,1989	8605		FWHP	J
BKB-8	BGFCL	Directional	1969	Sept,1989	8840	490-523	FWHP	J
BKB-9	BGFCL	Vertical	1969	August,2013	8318	1005-1097	FWHP	G
BKB-10	BGFCL	Directional	1969	June,2016	9291	1010-1102	FWHP	K
Field : Bangura								
Bangura-1	Tullow		2004			887-940	FWHP	D
Bangura-2	Tullow		2004			587-685	FWHP	D/E
Bangura-3	Tullow		2004			719-789	FWHP	D
Bangura-6	Tullow		2004			708-780	FWHP	D
Bangura-5	Tullow		2004			579-621	FWHP	D
Field : Beani Bazar								
BB-1	SGFL		1981	July,1999	13480	580-620	SIWHP	Upper
BB-2	SGFL		1981	July,1999	12048	3210-3220	FWHP	Upper
Field : Bibiyana								
BY-1	Chevron		1998			1547-2007	FWHP	BB60, BB66
BY-2	Chevron		1998			1313-1390	FWHP	BB60, BH20A, BH20E
BY-3	Chevron		1998			1363-1403	FWHP	BB70
BY-4	Chevron		1998			1330-1390	FWHP	BH10
BY-5	Chevron		1998			1254-1299	FWHP	BH20A, BH20B, BH20C, BH20D
BY-6	Chevron		1998			1250-1486	FWHP	BB70
BY-7	Chevron		1998			1454-1566	FWHP	BH10
BY-8	Chevron		1998			1270-1297	FWHP	BH20A, BH20B
BY-9	Chevron		1998			1243-1273	FWHP	BH10
BY-10	Chevron		1998			1465-1533	FWHP	BB60
BY-11	Chevron		1998			1260-1284	FWHP	BH20A, BH20B
BY-12	Chevron		1998			1259-1332	FWHP	BB70
BY-13	Chevron		1998			1300-1356	FWHP	BH20A, BH20B
BY-14	Chevron		1998			1342-1632	FWHP	BH20A, BH20B
BY-15	Chevron		1998			2189-2240	FWHP	BB60
BY-16	Chevron		1998			1381-1644	FWHP	BH10, BH20D

Conditions of Field and Well upto February 2021



Well	company	well type	Discovery	production start	Drilled depth (ft)	Pressure	Pressure type	Completion Zone
BY-17	<i>Chevron</i>		<i>1998</i>			<i>2104-2229</i>	<i>FWHP</i>	<i>BB60</i>
BY-18	<i>Chevron</i>		<i>1998</i>			<i>1904-2218</i>	<i>FWHP</i>	<i>BB60</i>
BY-19	<i>Chevron</i>		<i>1998</i>			<i>1354-1477</i>	<i>FWHP</i>	<i>BH10, BH20A</i>
BY-20	<i>Chevron</i>		<i>1998</i>			<i>1248-1262</i>	<i>FWHP</i>	<i>BH20D, BH20A, BH10</i>
BY-21	<i>Chevron</i>		<i>1998</i>			<i>1333-1348</i>	<i>FWHP</i>	<i>BH20A, BH20B, BH10</i>
BY-22	<i>Chevron</i>		<i>1998</i>			<i>1552-1586</i>	<i>FWHP</i>	<i>BB60</i>
BY-23	<i>Chevron</i>		<i>1998</i>			<i>1739-2021</i>	<i>FWHP</i>	<i>BH10, BH20A, BH20B, BH20C</i>
BY-24	<i>Chevron</i>		<i>1998</i>			<i>1337-2091</i>	<i>FWHP</i>	<i>BB60</i>
BY-25	<i>Chevron</i>		<i>1998</i>			<i>1728-1857</i>	<i>FWHP</i>	<i>BB60, BB66</i>
BY-26	<i>Chevron</i>		<i>1998</i>			<i>1877-2094</i>	<i>FWHP</i>	<i>BB60, BB64</i>
Field : Chattak								
Ch-1	SGFL		1959					
Field : Fenchuganj								
Fenchuganj-2	<i>BAPEX</i>		<i>1988</i>	<i>May, 2004</i>				
Fenchuganj-3	<i>BAPEX</i>		<i>1988</i>	<i>February, 2005</i>		<i>2004-2010</i>		<i>upper</i>
Fenchuganj-4	<i>BAPEX</i>		<i>1988</i>			<i>2037-2065</i>		
Field : Feni								
Feni-1	<i>BAPEX</i>		<i>1981</i>					
Feni-2	<i>BAPEX</i>		<i>1981</i>					
Feni-3	<i>BAPEX</i>		<i>1981</i>					
Feni-4	<i>BAPEX</i>		<i>1981</i>					
Feni-5	<i>BAPEX</i>		<i>1981</i>					
Field : Habiganj								
Hbj-1	<i>BGFCL</i>	<i>Vertical</i>	<i>1963</i>	<i>Feb,1969</i>	<i>11500</i>		<i>FWHP</i>	<i>upper</i>
Hbj-2	<i>BGFCL</i>	<i>Vertical</i>	<i>1963</i>	<i>Feb,1969</i>	<i>5100</i>		<i>FWHP</i>	<i>upper</i>
Hbj-3	<i>BGFCL</i>	<i>Vertical</i>	<i>1963</i>	<i>July,1985</i>	<i>5282</i>	<i>1478-1486</i>	<i>FWHP</i>	<i>upper</i>
Hbj-4	<i>BGFCL</i>	<i>Vertical</i>	<i>1963</i>	<i>May,1985</i>	<i>5249</i>	<i>1460-1467</i>	<i>FWHP</i>	<i>upper</i>
Hbj-5	<i>BGFCL</i>	<i>Directional</i>	<i>1963</i>	<i>Feb,1992</i>	<i>11552</i>	<i>1440-1446</i>	<i>FWHP</i>	<i>upper</i>
Hbj-6	<i>BGFCL</i>	<i>Vertical</i>	<i>1963</i>	<i>Feb,1992</i>	<i>5515</i>	<i>1375-1379</i>	<i>FWHP</i>	<i>upper</i>
Hbj-7	<i>BGFCL</i>	<i>Vertical</i>	<i>1963</i>	<i>April,2000</i>	<i>10236</i>	<i>1331-1139</i>	<i>FWHP</i>	<i>upper</i>
Hbj-8	<i>BGFCL</i>	<i>Vertical</i>	<i>1963</i>	<i>May, 2000</i>	<i>5280</i>			<i>upper</i>
Hbj-9	<i>BGFCL</i>	<i>Vertical</i>	<i>1963</i>	<i>July,1998</i>	<i>5249</i>			<i>upper</i>
Hbj-10	<i>BGFCL</i>	<i>Vertical</i>	<i>1963</i>	<i>Apr, 2000</i>	<i>5133</i>	<i>1322-1331</i>	<i>FWHP</i>	<i>upper</i>
Hbj-11	<i>BGFCL</i>	<i>Vertical</i>	<i>1963</i>	<i>February,2008</i>	<i>10499</i>	<i>1417-1423</i>	<i>FWHP</i>	<i>upper</i>
Field : Jalalabad								
JB-1	<i>Chevron</i>		<i>1989</i>			<i>1333-1436</i>	<i>FWHP</i>	<i>BB60, BB50</i>

Conditions of Field and Well upto February 2021



Well	company	well type	Discovery	production start	Drilled depth (ft)	Pressure	Pressure type	Completion Zone
JB-2	<i>Chevron</i>		<i>1989</i>			<i>1279-1294</i>	<i>FWHP</i>	<i>BB50, BB60</i>
JB-3	<i>Chevron</i>		<i>1989</i>			<i>1332-1375</i>	<i>FWHP</i>	<i>BB50, BB60</i>
JB-4	<i>Chevron</i>		<i>1989</i>			<i>1365-1425</i>	<i>FWHP</i>	<i>BB60</i>
JB-6	<i>Chevron</i>		<i>1989</i>			<i>1354-1362</i>	<i>FWHP</i>	<i>BB60, BB50</i>
JB-7	<i>Chevron</i>		<i>1989</i>			<i>1666-1679</i>	<i>FWHP</i>	<i>BB20</i>
JB-8	<i>Chevron</i>		<i>1989</i>			<i>1362-1370</i>	<i>FWHP</i>	<i>BB50, BB60</i>
Field : Kailas Tila								
KTL-1	<i>SGFL</i>		<i>1962</i>	<i>June, 1983</i>	<i>12417</i>	<i>0</i>	<i>SIWHP</i>	
KTL-2	<i>SGFL</i>		<i>1962</i>	<i>Feb, 1995</i>		<i>2225-2230</i>	<i>FWHP</i>	
KTL-3	<i>SGFL</i>		<i>1962</i>	<i>March, 1995</i>		<i>2470-2495</i>	<i>FWHP</i>	
KTL-4	<i>SGFL</i>		<i>1962</i>	<i>March, 1997</i>		<i>2360-2410</i>	<i>FWHP</i>	
KTL-5	<i>SGFL</i>		<i>1962</i>	<i>Sep, 2006</i>		<i>0</i>	<i>SIWHP</i>	
KTL-6	<i>SGFL</i>		<i>1962</i>	<i>Aug, 2007</i>		<i>2490-2495</i>	<i>FWHP</i>	
KTL-7	<i>SGFL</i>		<i>1962</i>			<i>0</i>	<i>SIWHP</i>	
Field : Kamta								
Kamta-1	<i>BGFCL</i>	<i>Vertical</i>	<i>1981</i>	<i>july,1982</i>	<i>11857</i>			<i>N/A</i>
Field : Meghna								
M-1	<i>BGFCL</i>	<i>Vertical</i>	<i>2004</i>	<i>july,1990</i>	<i>10069</i>	<i>1400-1450</i>	<i>FWHP</i>	<i>A,E,F & G</i>
Field : Moulavi Bazar								
MV Bazar-2	<i>Chevron</i>		<i>1997</i>			<i>800-820</i>	<i>FWHP</i>	<i>BB70</i>
MV Bazar-3	<i>Chevron</i>		<i>1997</i>			<i>800-820</i>	<i>FWHP</i>	<i>BB70</i>
MV Bazar-4	<i>Chevron</i>		<i>1997</i>			<i>946-952</i>	<i>FWHP</i>	<i>BB20</i>
MV Bazar-5	<i>Chevron</i>		<i>1997</i>			<i>0</i>	<i>SIWHP</i>	<i>BB60</i>
MV Bazar-6	<i>Chevron</i>		<i>1997</i>			<i>822-890</i>	<i>FWHP</i>	<i>BB20</i>
MV Bazar-7	<i>Chevron</i>		<i>1997</i>			<i>844-901</i>	<i>FWHP/SIWHP</i>	<i>BB20</i>
MV Bazar-9	<i>Chevron</i>		<i>1997</i>			<i>0</i>	<i>SIWHP</i>	<i>BB46, BB48, BB60</i>
Field : Narshingdi								
N-1	<i>BGFCL</i>	<i>vertical</i>	<i>1990</i>	<i>october,1990</i>	<i>11320</i>	<i>1143-1197</i>	<i>FWHP</i>	<i>BL</i>
N-2	<i>BGFCL</i>	<i>vertical</i>	<i>1990</i>	<i>february,2007</i>	<i>10778</i>	<i>1015-1097</i>	<i>FWHP</i>	<i>BL</i>
Field : Rashidpur								
RP-1	<i>SGFL</i>		<i>1960</i>			<i>1290-1291</i>	<i>FWHP</i>	<i>Upper</i>
RP-2	<i>SGFL</i>		<i>1960</i>			<i>73</i>	<i>SIWHP</i>	<i>Lower</i>
RP-3	<i>SGFL</i>		<i>1960</i>			<i>1548-1568</i>	<i>FWHP</i>	<i>Lower</i>
RP-4	<i>SGFL</i>		<i>1960</i>			<i>1450-1655</i>	<i>FWHP</i>	<i>Lower</i>
RP-5	<i>SGFL</i>		<i>1960</i>			<i>2291</i>	<i>SIWHP</i>	<i>Lower</i>
RP-6	<i>SGFL</i>		<i>1960</i>			<i>870</i>	<i>SIWHP</i>	<i>A</i>

Conditions of Field and Well upto February 2021



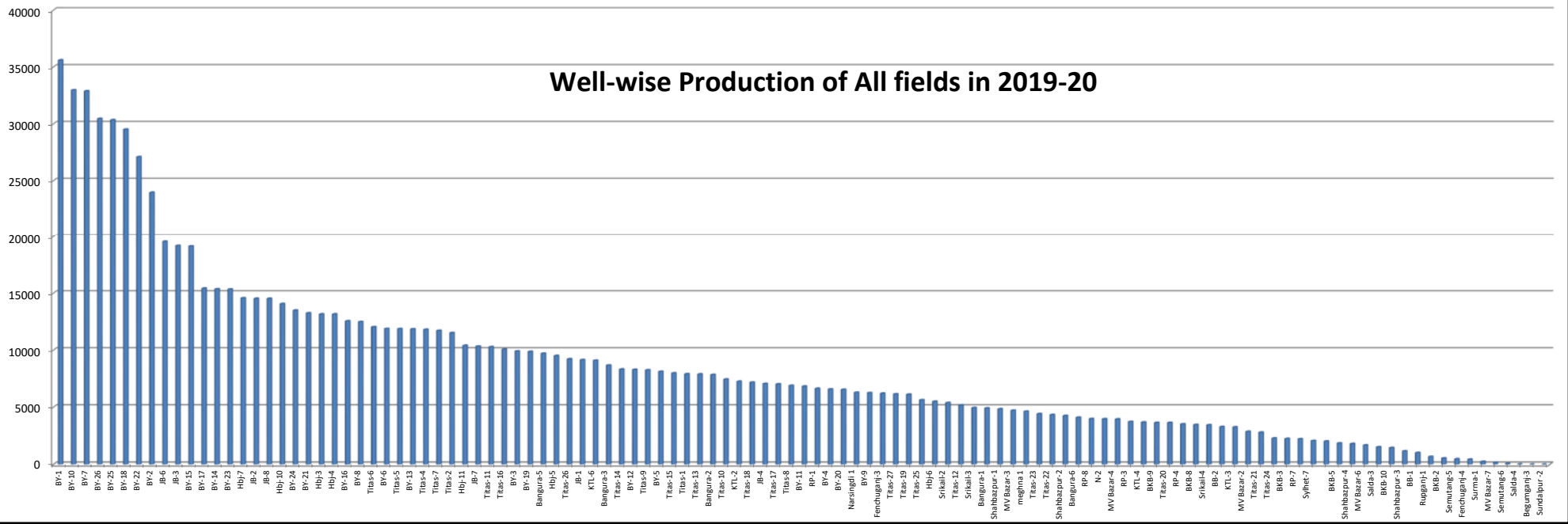
Well	company	well type	Discovery	production start	Drilled depth (ft)	Pressure	Pressure type	Completion Zone
RP-7	SGFL		1960			1308-1338	FWHP	Lower
RP-8	SGFL		1960			1600-1625	FWHP	Upper
Field : Salda Nadi								
Salda-1	BAPEX		1995					
Salda-2	BAPEX		1995					
Salda-3	BAPEX	Directional	1995	February, 2012		639-640, 698-700		Upper/Lower
Salda-4	BAPEX		1995					
Field : Sangu								
Sangu-1	BGFCL		1996					
Sangu-3z	BGFCL		1996					
Sangu-4	BGFCL		1996					
Sangu-5	BGFCL		1996					
Sangu-7	BGFCL		1996					
Sangu-8	BGFCL		1996					
Sangu-9	BGFCL		1996					
Sangu-10	BGFCL		1996					
Sangu-11	BGFCL		1996					
Field : Semutang								
Semutang-5	BAPEX		1967			280-508		Lower Zone
Semutang-6	BAPEX		1967			750-1302		
Field : Shahbazpur								
Shahbazpur-1	BAPEX		1995	May, 2009		2310-3543		Lower Zone
Shahbazpur-2	BAPEX		1995			3541-4133		Lower Zone
Shahbazpur-3	BAPEX		1995			4300		Upper Zone
Shahbazpur-4	BAPEX		1995			4250		Upper Zone
Field : Srikail								
Srikail-2	BAPEX		2012			990-1016		Upper & Lower D
Srikail-3	BAPEX		2012			981-1043		Upper & Lower D
Srikail-4	BAPEX		2012			1018-1068		Upper & Lower D
Field : Sundalpur								
Sundalpur -1	BAPEX		2011					
Sundalpur -2	BAPEX		2011					
Field : Sylhet								
Sylhet-3	SGFL		1955	Aug, 1958				
Sylhet-6	SGFL		1955	Aug, 1964		800-850	SIWHP	
Sylhet-7	SGFL		1955	Apr, 2005		1750-1820	FWHP	Lower Bokabil

Conditions of Field and Well upto February 2021

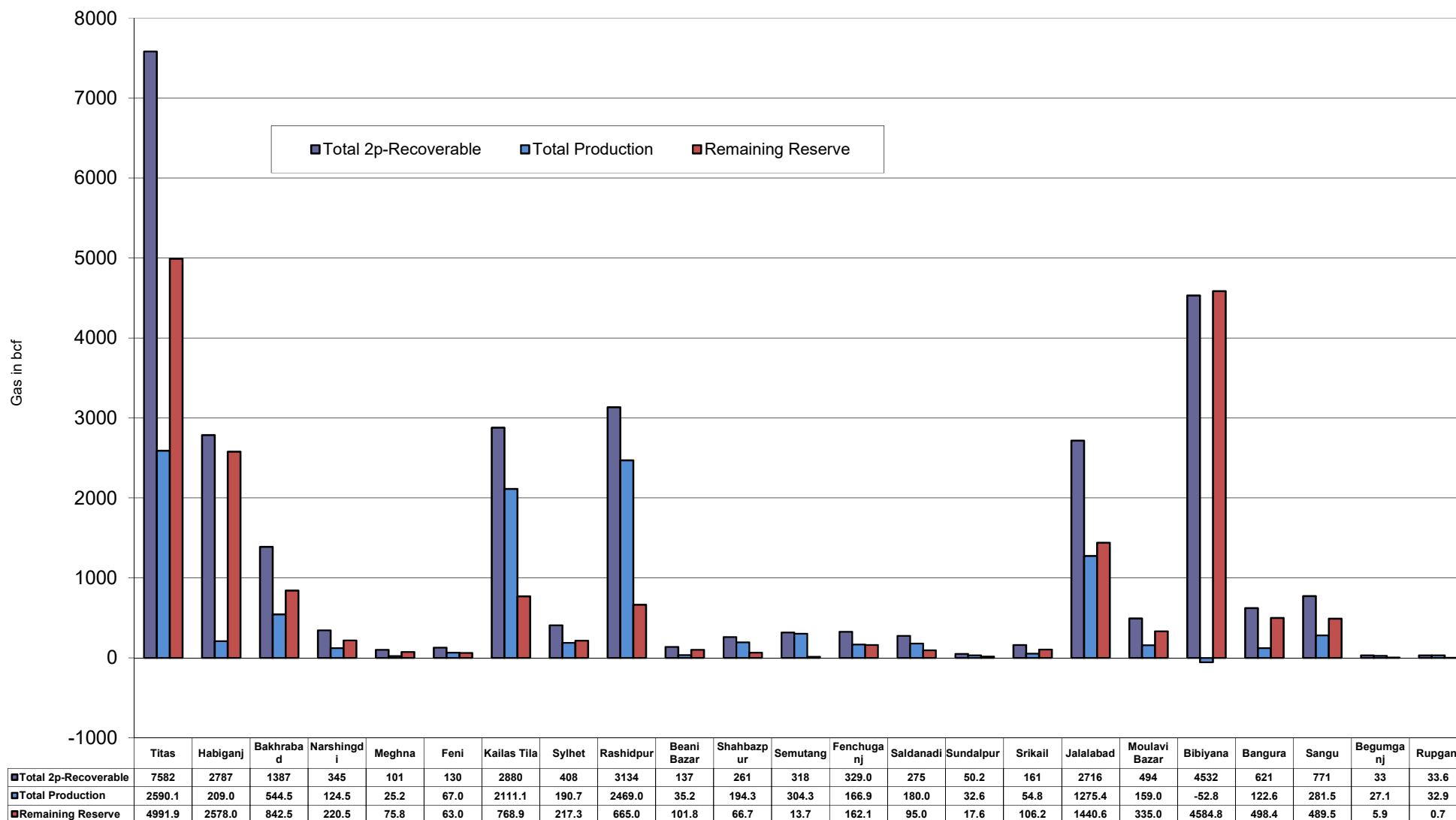


Well	company	well type	Discovery	production start	Drilled depth (ft)	Pressure	Pressure type	Completion Zone
Surma-1	SGFL		1955	June, 2010		230	SIWHP	C & D
Field : Titas								
Titas-1	BGFCL	vertical	1962	Mar,1969	12325	900-925	FWHP	A
Titas-2	BGFCL	vertical	1962	Fen,1969	10574	960-1020	FWHP	A
Titas-3	BGFCL	vertical	1962	sept,1969	9315	0	FWHP	A
Titas-4	BGFCL	vertical	1962	oct,1969	9350	1020-1070	FWHP	A
Titas-5	BGFCL	Directional	1962	jan,1981	10805	990-1035	FWHP	A
Titas-6	BGFCL	vertical	1962	Feb,1984	10072	1195-1225	FWHP	A
Titas-7	BGFCL	Directional	1962	July,1985	11006	1090-1160	FWHP	A
Titas-8	BGFCL	Directional	1962	sept,1985	11760	1000-1030	FWHP	B & C
Titas-9	BGFCL	Directional	1962	jan,1988	11893	1040-1085	FWHP	B & C
Titas-10	BGFCL	Directional	1962	may,1988	12139	1140-1180	FWHP	A
Titas-11	BGFCL	vertical	1962	Jun,1991	10462	1275-1310	FWHP	A
Titas-12	BGFCL	Directional	1962	July,2002	9873	1465-1500	FWHP	A
Titas-13	BGFCL	Directional	1962	June,2000	11487	1085-1115	FWHP	A
Titas-14	BGFCL	Directional	1962	June,2000	11004	1200-1250	FWHP	A
Titas-15	BGFCL	vertical	1962	may,2006	10446	0	FWHP	A
Titas-16	BGFCL	Directional	1962	dec,2005	11673	1205-1225	FWHP	A
Titas-17	BGFCL	vertical	1962	feb,2013	9424	1145-1175	FWHP	A
Titas-18	BGFCL	Directional	1962	august,2013	10932	1165-1190	FWHP	A
Titas-19	BGFCL	Directional	1962	may,2014	12730	1365-1415	FWHP	A
Titas-20	BGFCL	Directional	1962	oct,2013	11585	1370-1440	FWHP	A
Titas-21	BGFCL	Directional	1962	dec,2013	11631	1260-1285	FWHP	A
Titas-22	BGFCL	Directional	1962	march,2014	11926	990-1025	FWHP	A
Titas-27	BGFCL	Directional	1962	april,2014	10292	1245-1265	FWHP	A
Titas-23	BGFCL	Directional	1962	feb,2017	11988	2265-2340	FWHP	C
Titas-24	BGFCL	Directional	1962	oct,2016	12686	1120-1245	FWHP	C
Titas-25	BGFCL	vertical	1962	march,2016	11680	1300-1340	FWHP	A
Titas-26	BGFCL	Directional	1962	july,2016	12618	1840-1875	FWHP	C
Field : Begumganj								
Begumganj-3	BAPEX		1977					
Field : Rupganj								
Rupganj-1	BAPEX		2014			38-88		

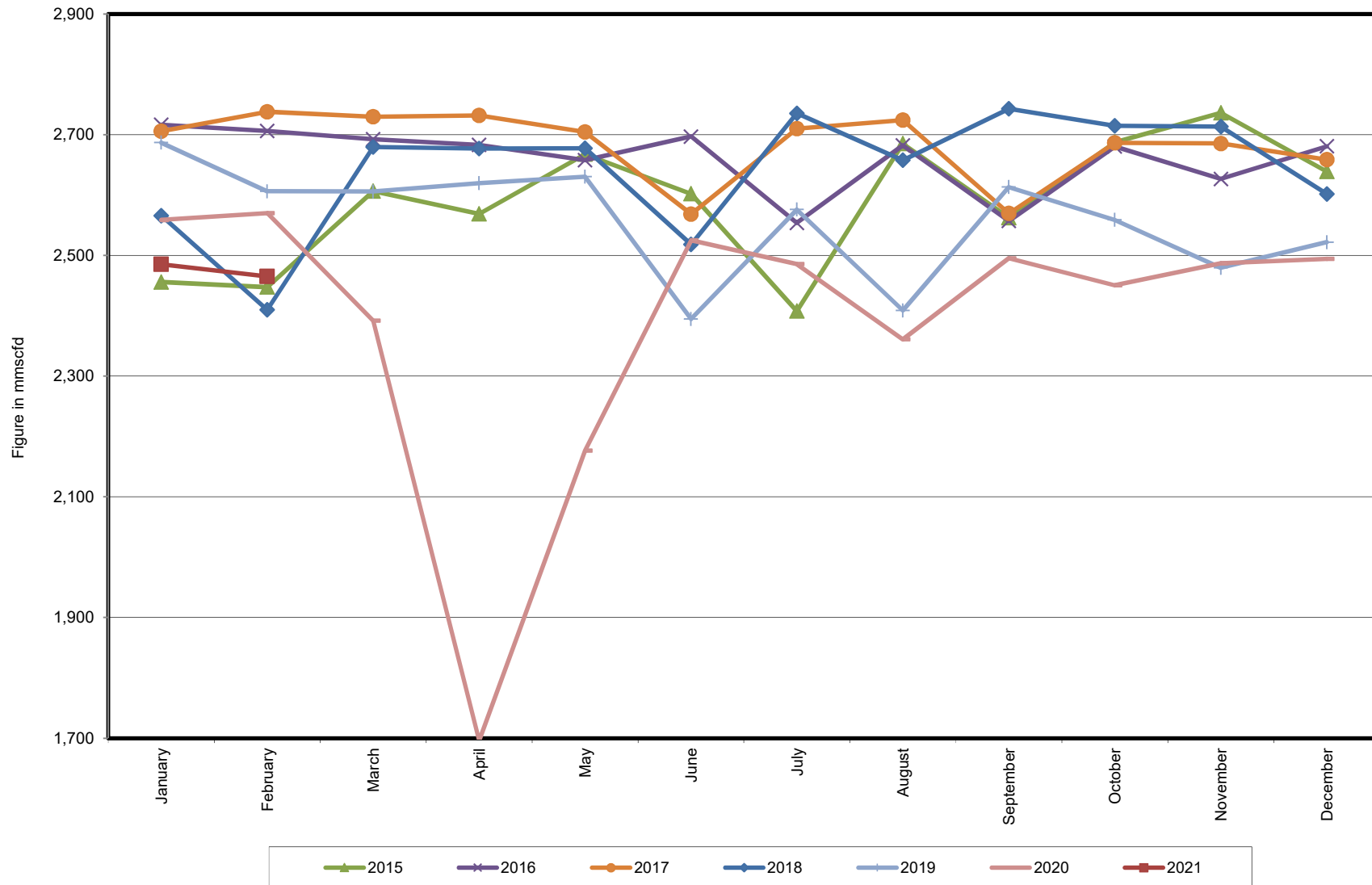
Well-wise Production of All fields in 2019-20



Reserve, Production and Remaining Reserve as of February 2021



Daily Avg. Production From January 2015 to February 2021



Field Wise Daily Avg. Production February 2021

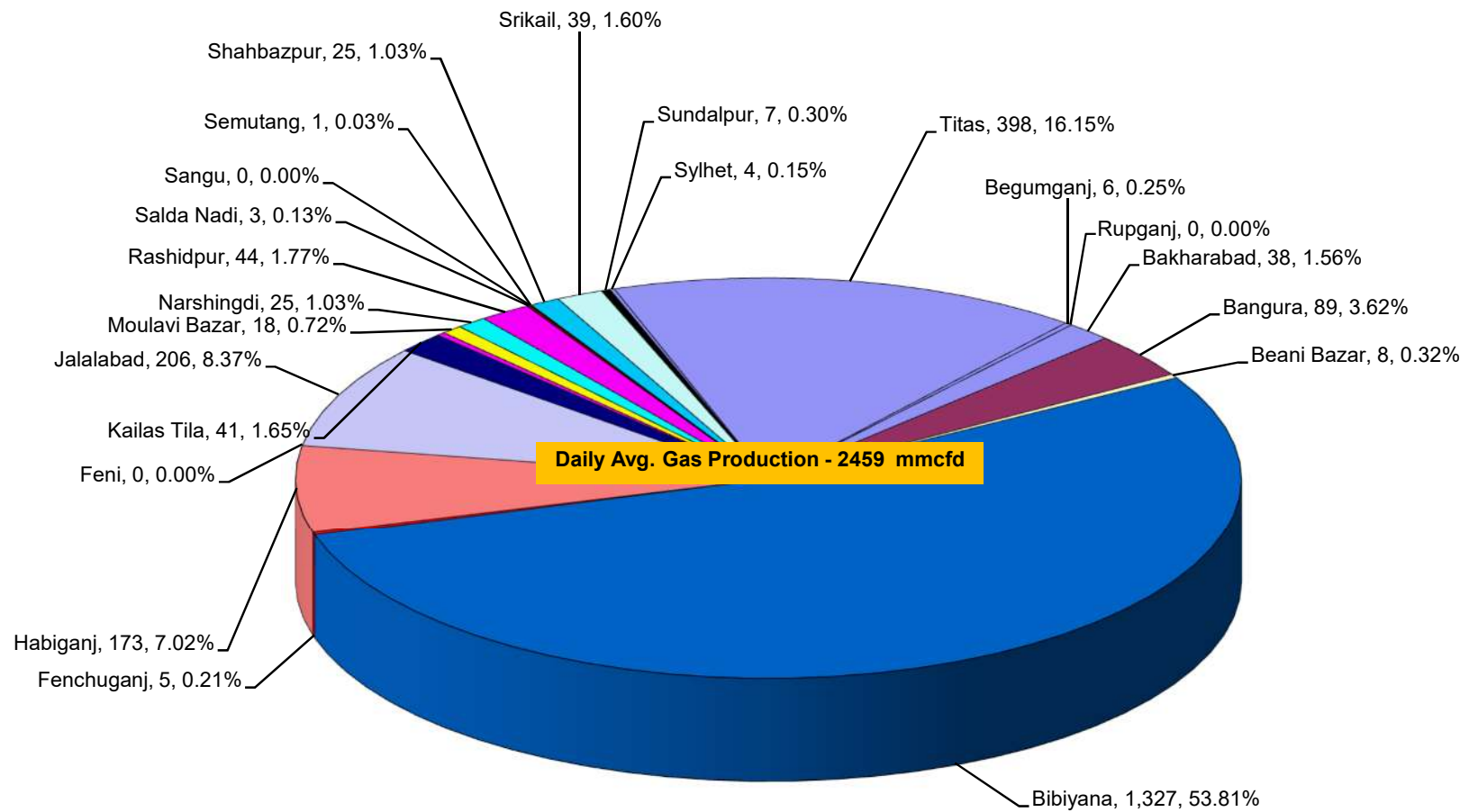
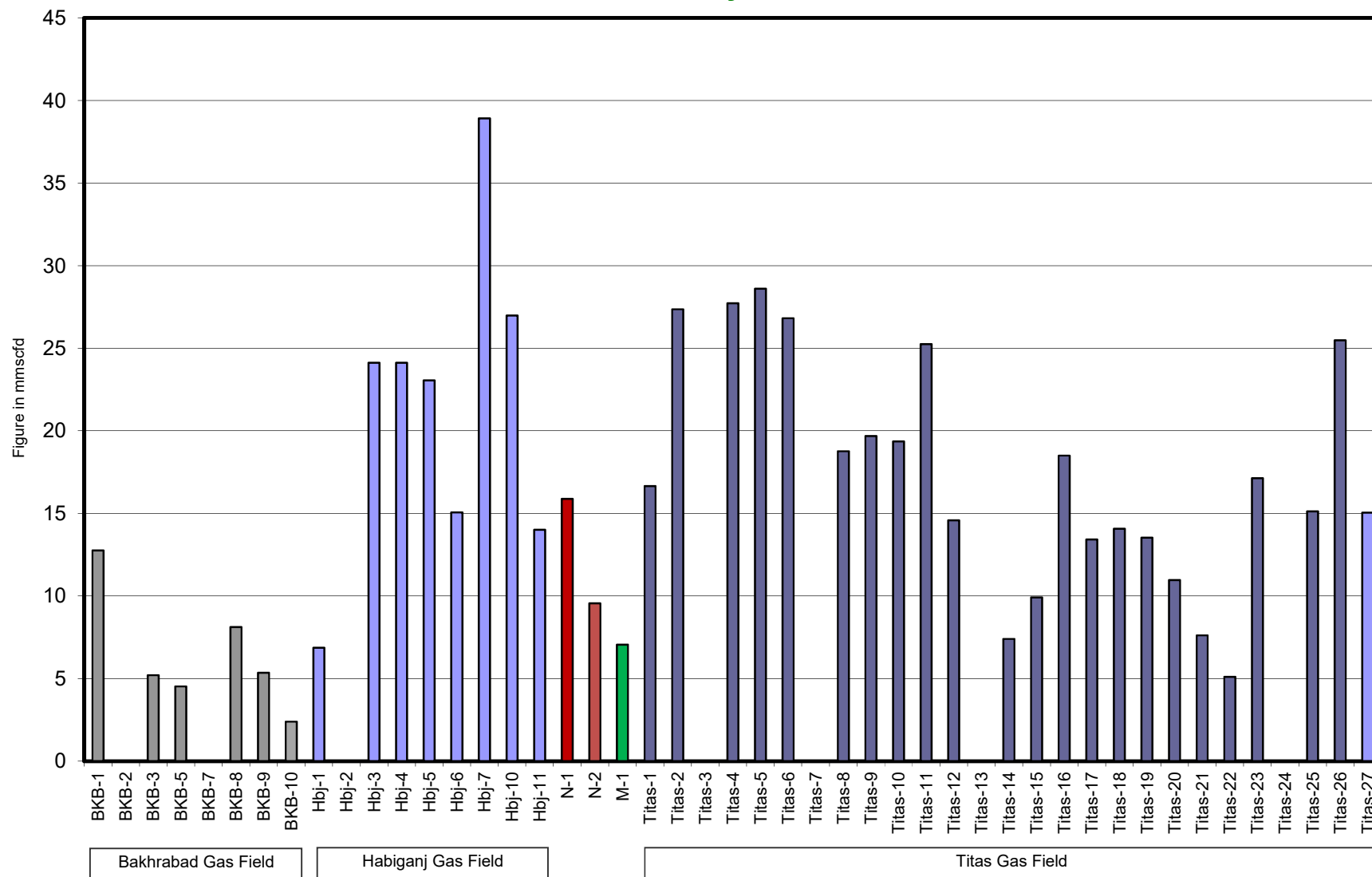


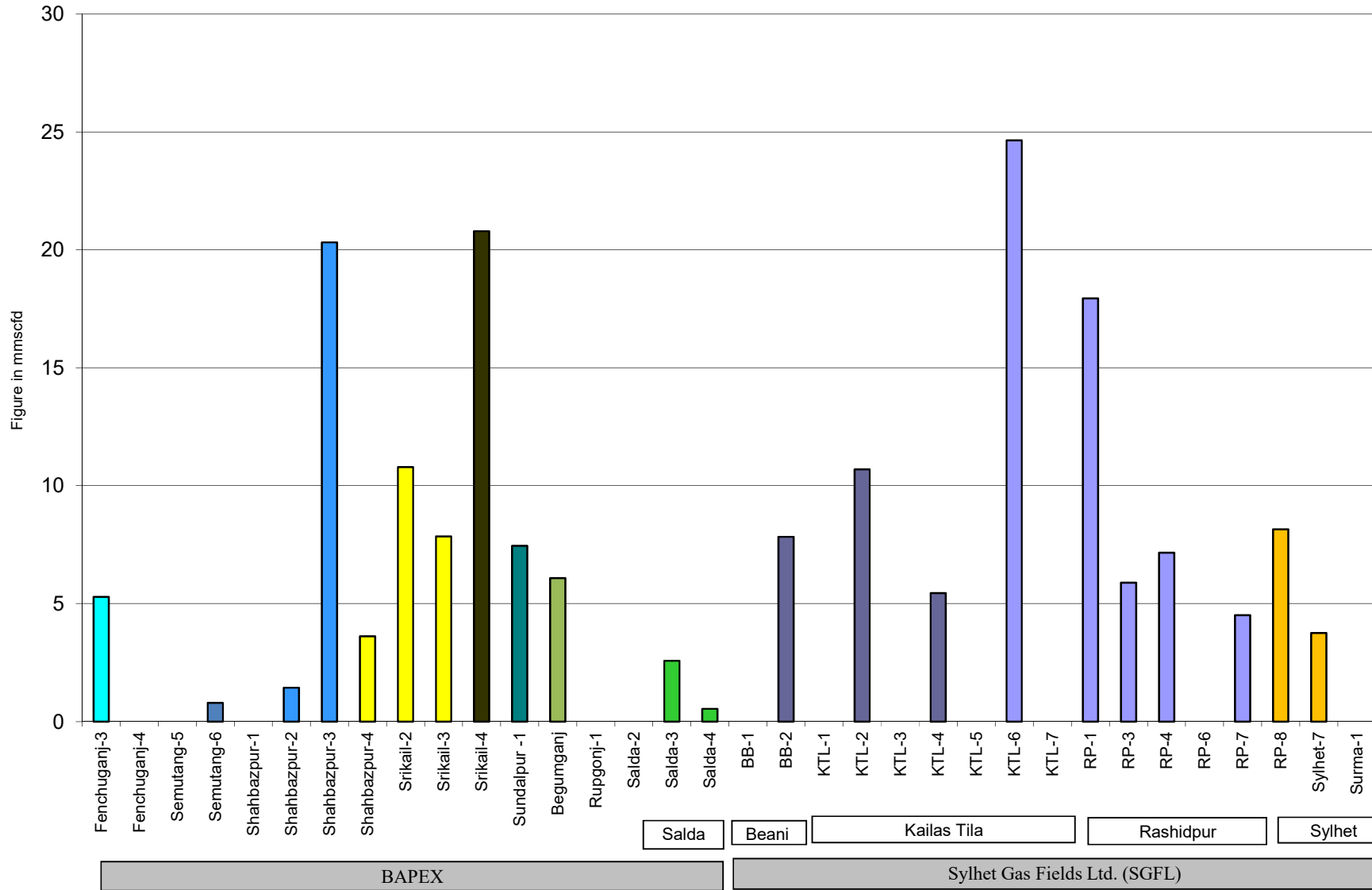
Figure in mmcf
and % of total production

Wellwise Daily Avg. Production- BGFCL February 2021

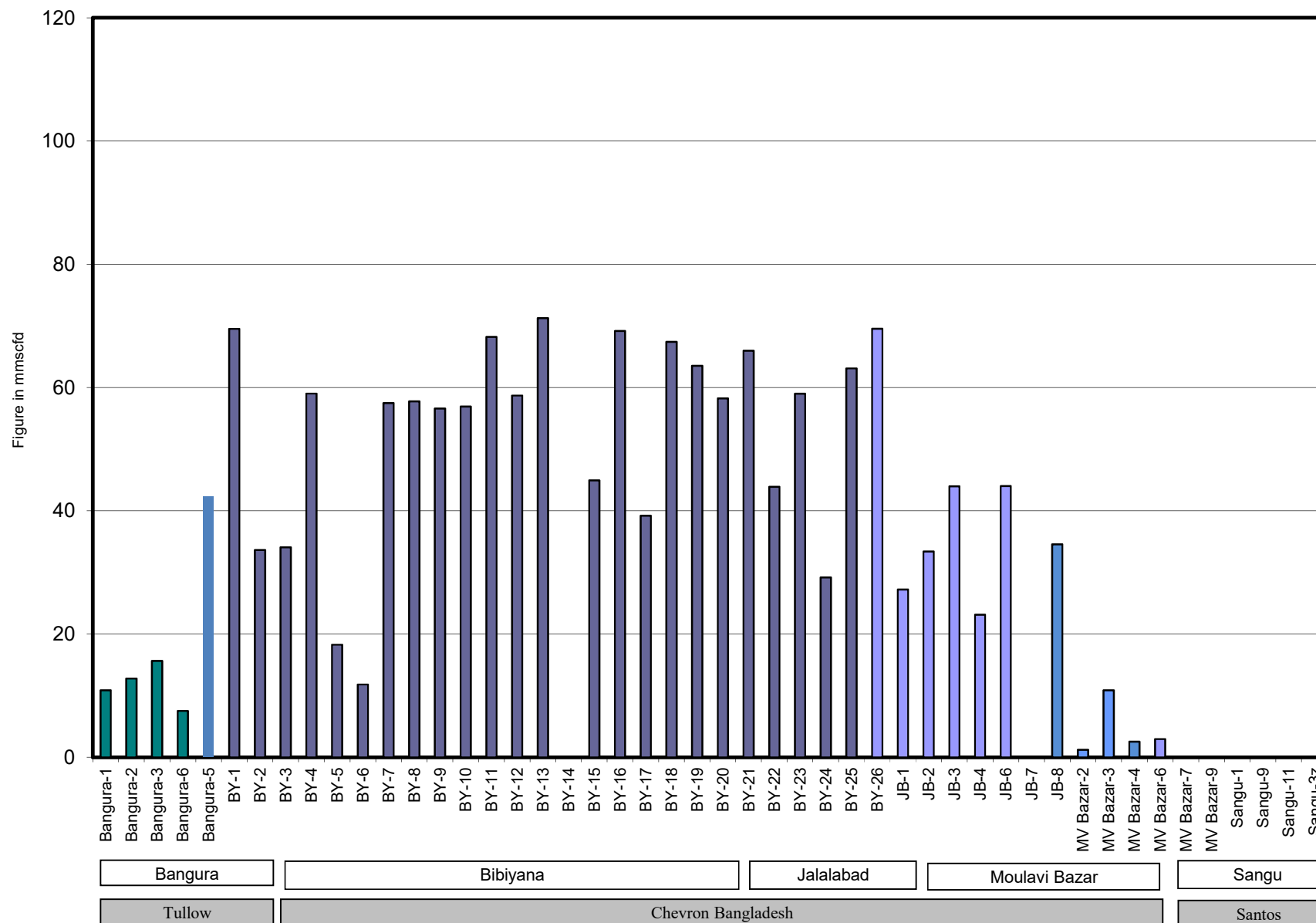


Bangladesh Gas Fields Co. Ltd. (BGFCL)

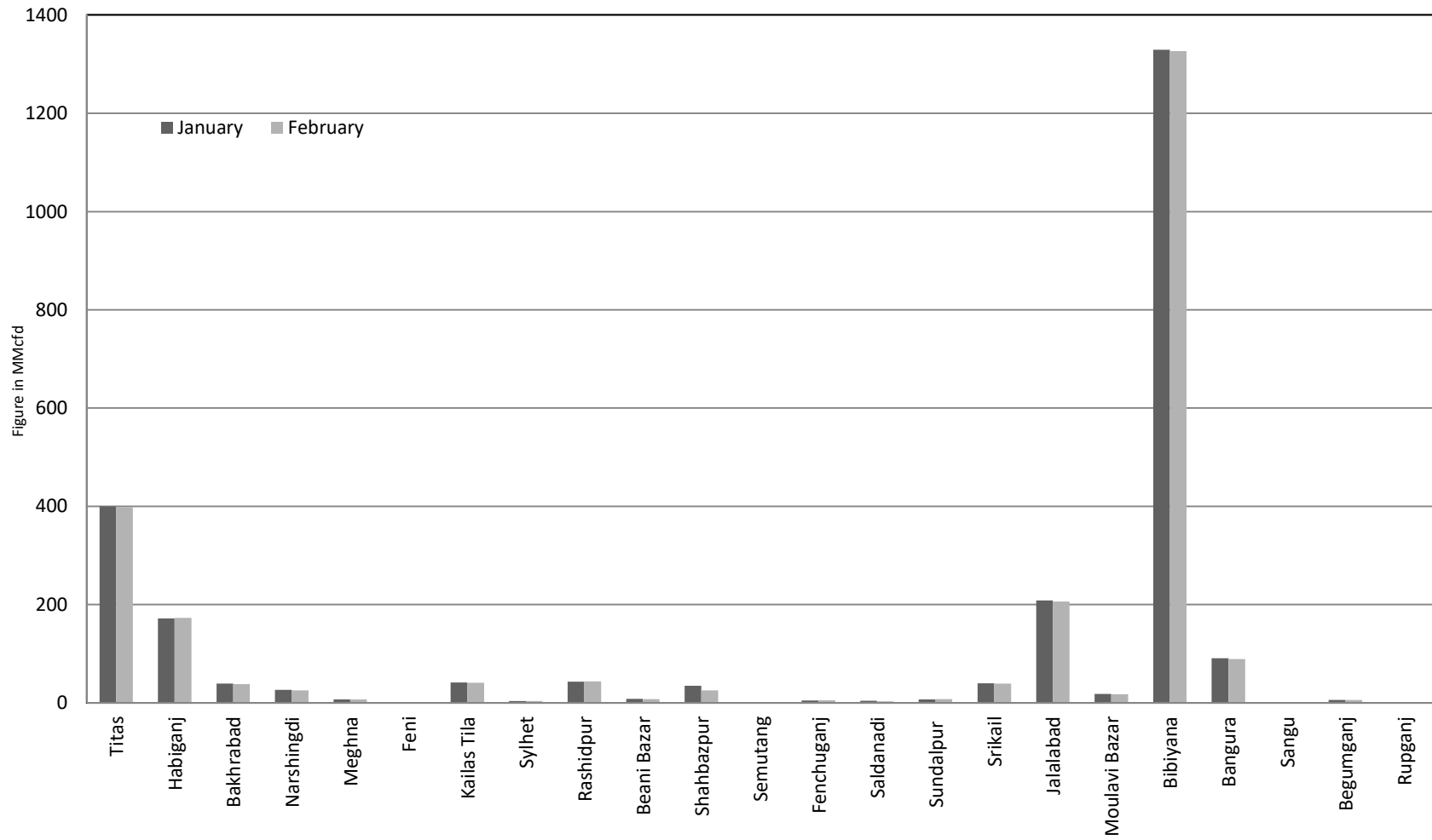
Wellwise Daily Avg. Production- Bapex and SGFL February 2021



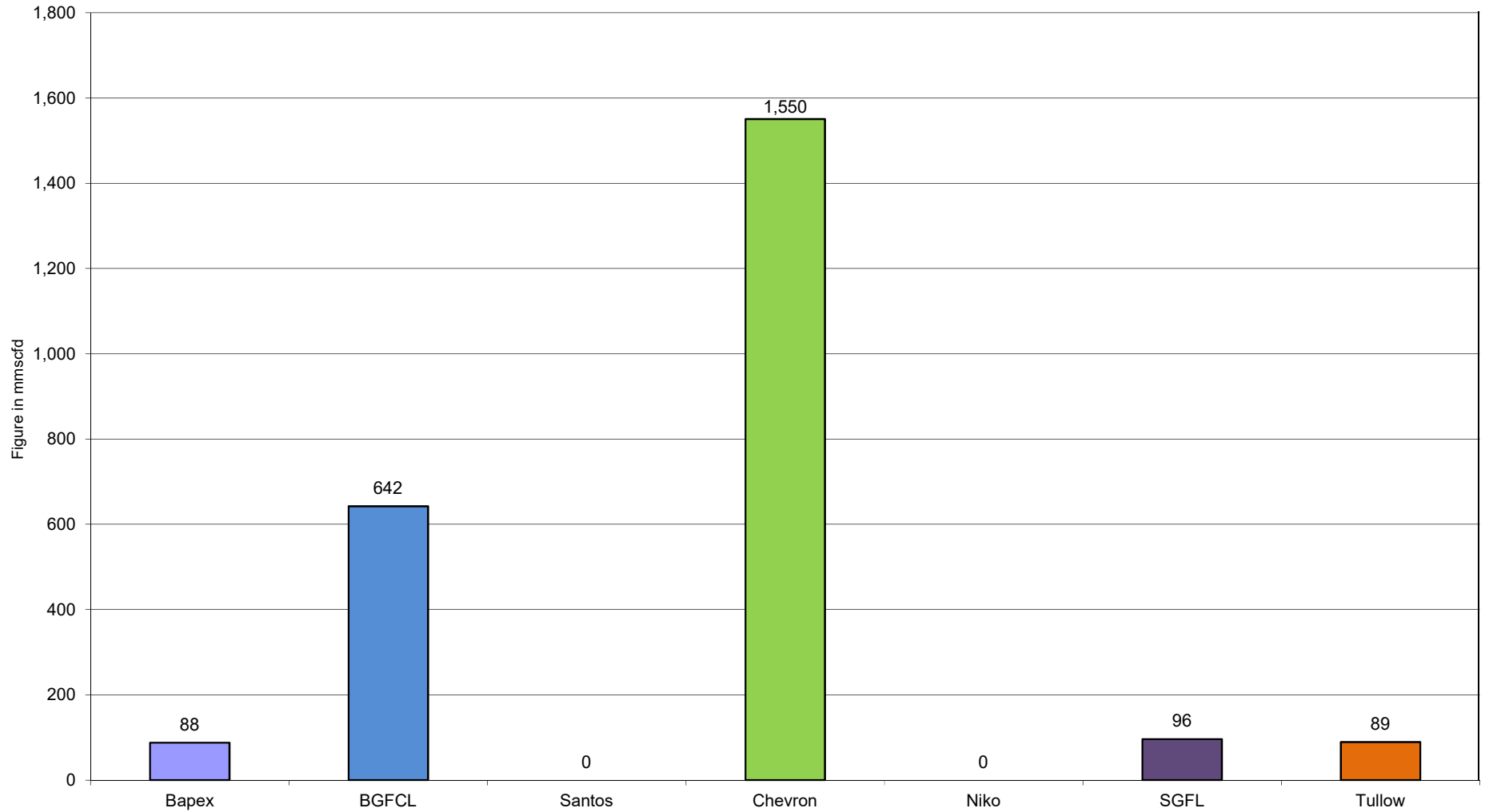
Wellwise Daily Avg. Production- IOC and JVA February 2021



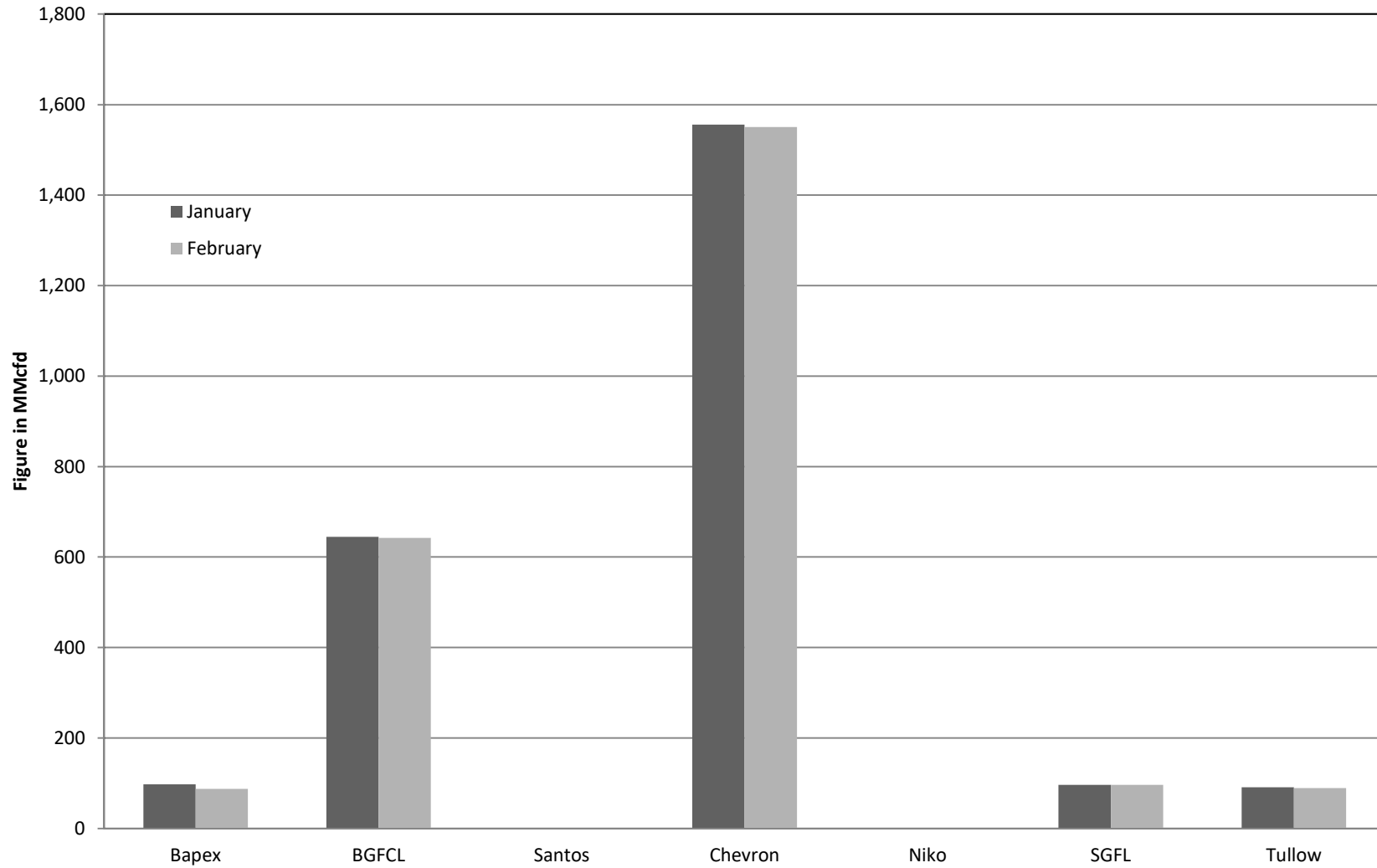
Comparison of fieldwise daily avg. Gas production between January 2021 & February 2021



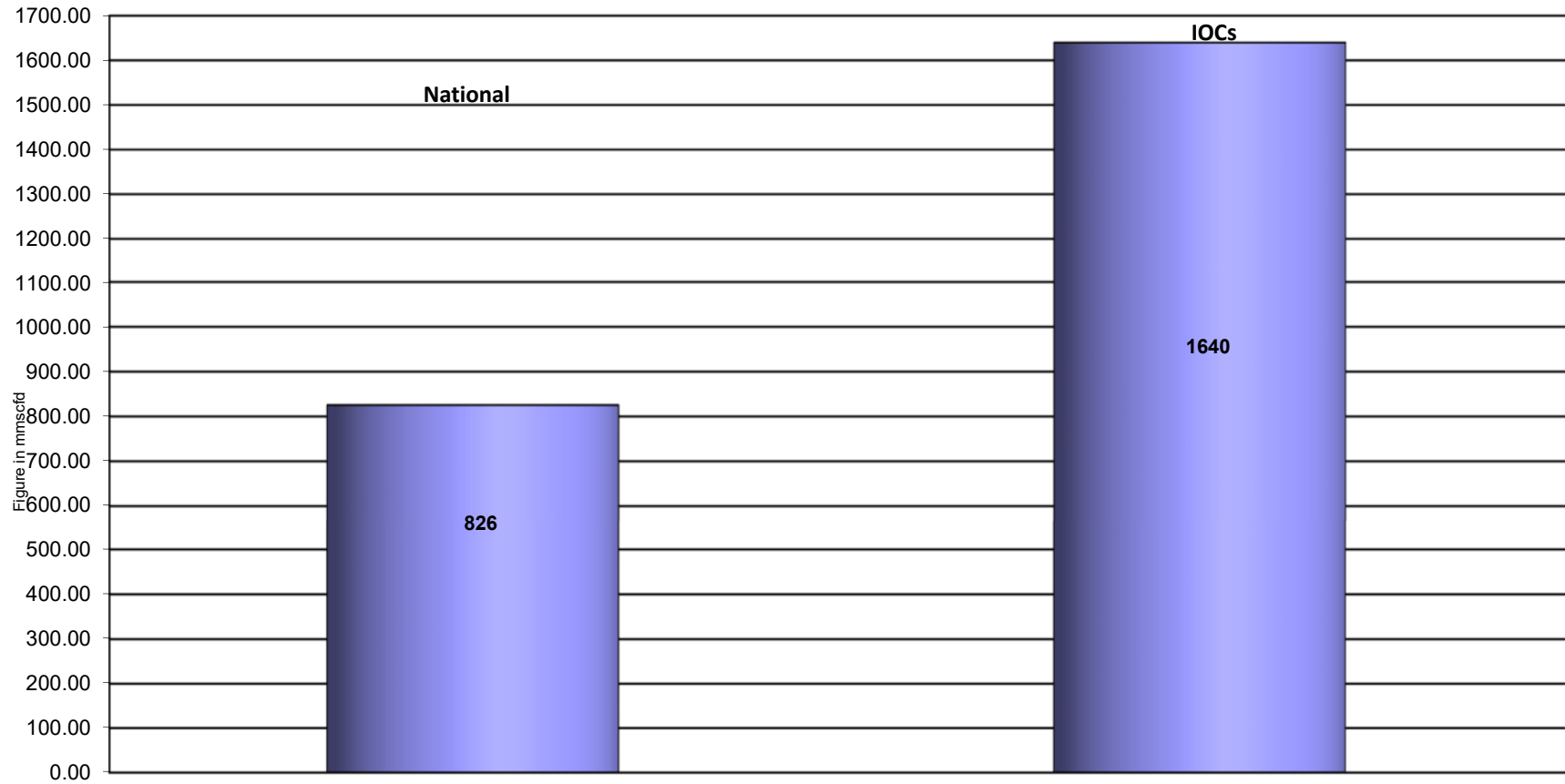
Daily Avg. Production by Operators February 2021



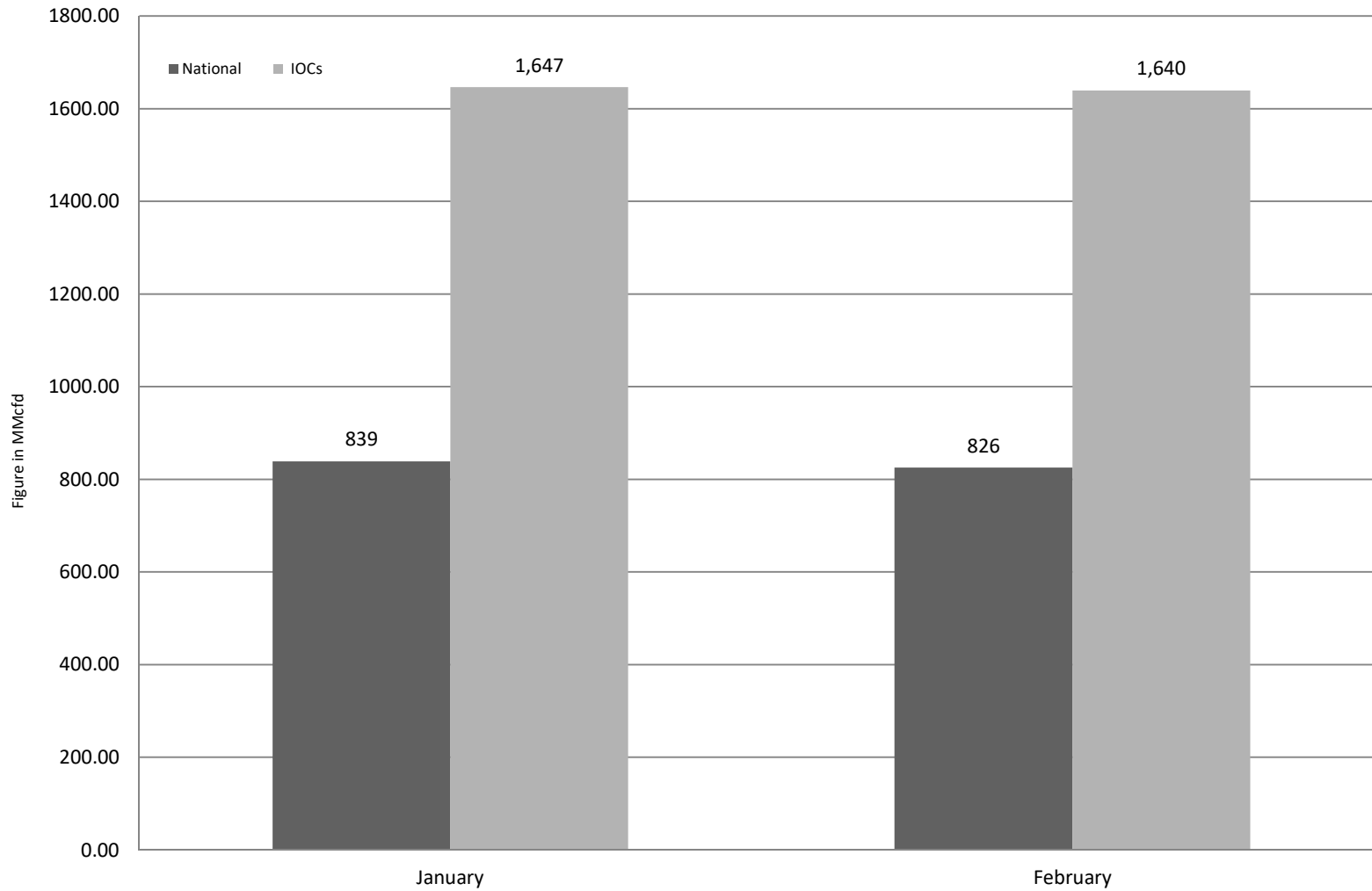
Comparison of operatorwise daily avg. Gas production between January 2021 & February 2021



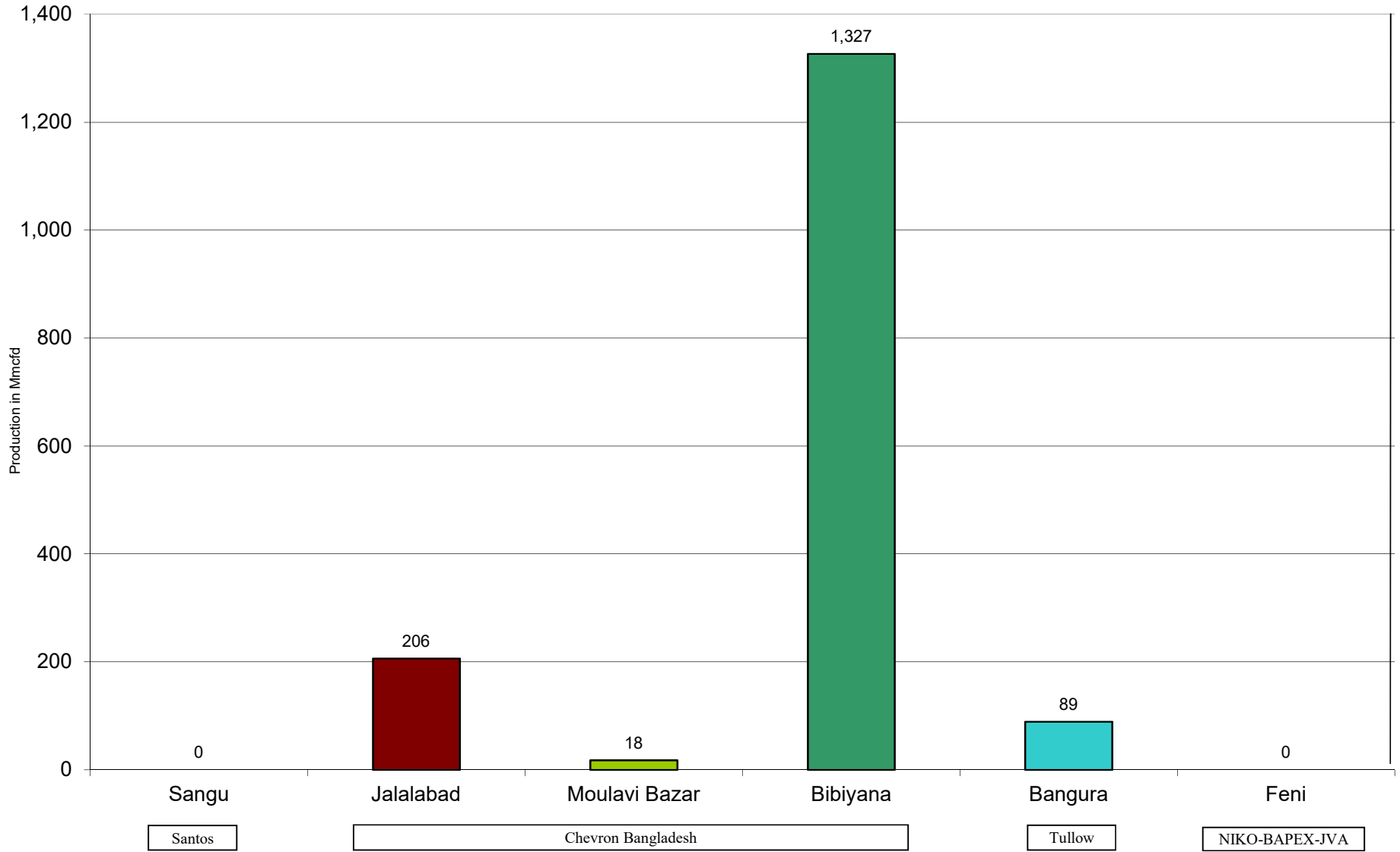
Daily Avg. Production - National Vs. IOCs February 2021



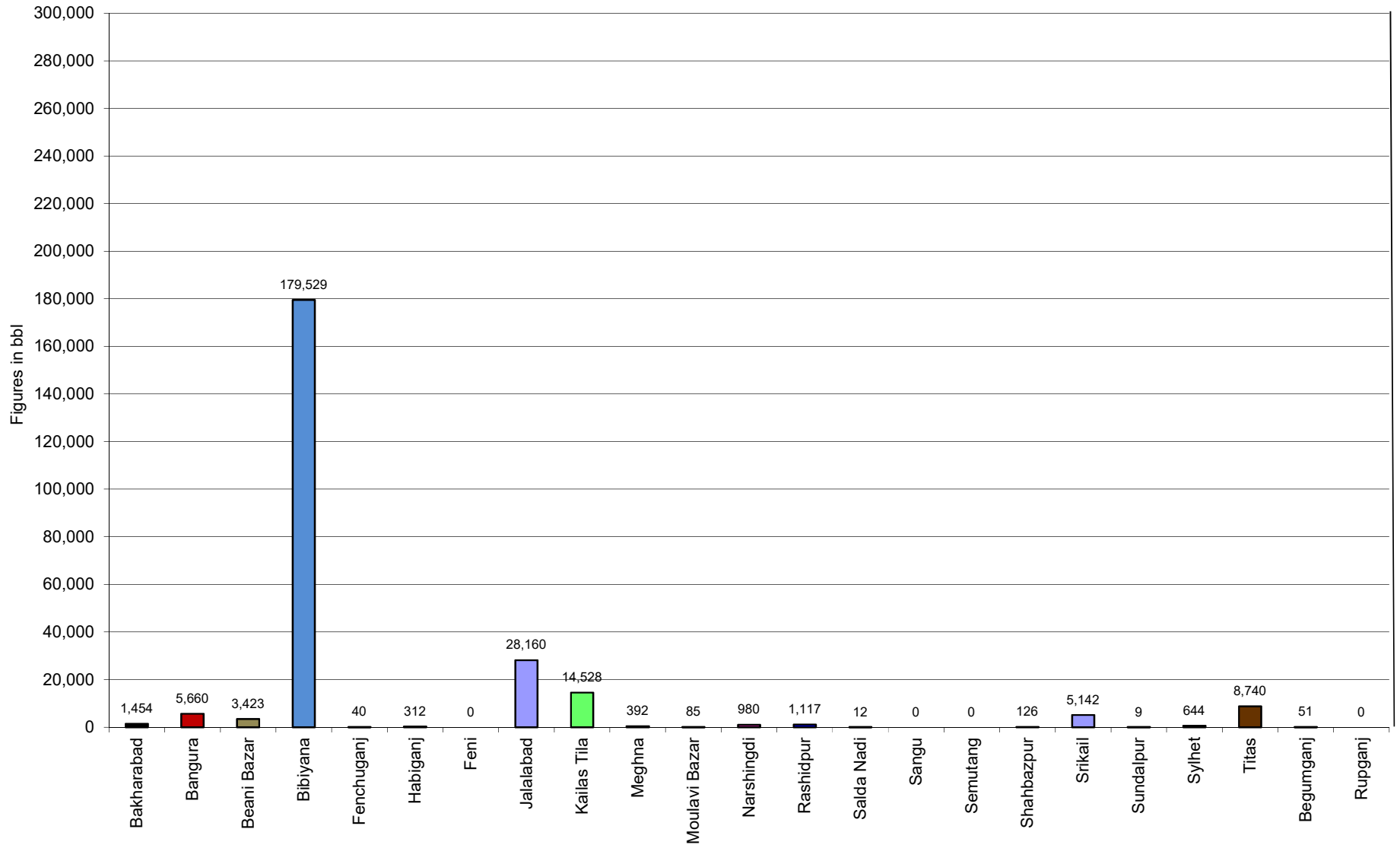
Comparison of daily avg. Gas production - National vs IOC's between January 2021 & February 2021



Daily Avg. Production - IOC and JVA February 2021



Monthly Condensate Production February 2021



Field wise Coal Reserve in Bangladesh

SI No.	Coal Basins	Proved (Mt)	Indicated (Mt)	Inferred (Mt)	Total (Mt)
1	Barapukuria	114.32	211.33	21.06+(43-64)*	346.71+(43-64)*
2	Phulbari	288	226	58	572
3	Khalashpir	-	297.57	225.92	523.49
4	Jamalganj	-	-	1053.9	1053.9
5	Dighipara	-	105	495	600
	Total	402.32	839.9	1896.88-1917.88	3139.10-3160.10

**Resources of VI Seam in second syncline are towards SW of main basin, after Wardell Armstrong*

NOTE: Reserve Figure based on Coal Sector Development Strategy (Final), HCU, PwC

Summary of Reserve and Production of Barapukuria Coal Mine As of February 2021

Coal Initially Place (Proven + Probable)	346,710 kT	346.71 MT
Total Reserve of Seam VI	285,410 kT	285.41 MT
Recoverable from Seam VI Central part(Proven + Probable)	16,540 kT*	16.54 MT
Coal Production in February 2021	89.10 kT	0.09 MT
Cumulative Production as of February 2021	11,964 kT	11.96 MT
Remaining Reserve	4,576 kT	4.58 MT

NOTE: Reserve figure based on Mines and Minerals Development Report ,HCU PwC

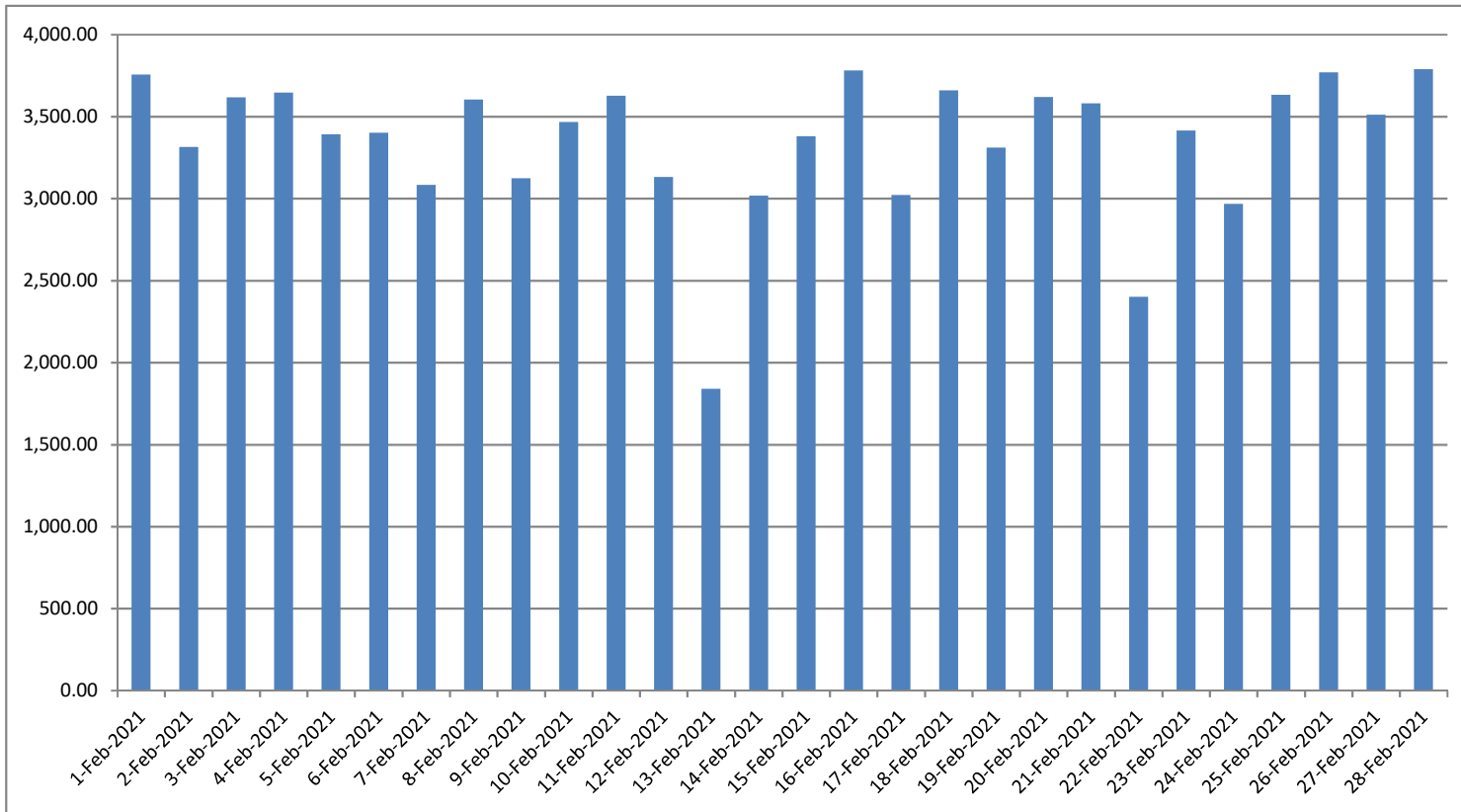
*Figure from BCMCL, M/S Wardell Armstrong. According to Mines and Minerals Development Report ,HCU, PwC this figure is 64.8 Mt

Barapukuria Coal Mine-MPM and P Contract (BCMCL)
Measurement Record: Surface Belt Weigher
Measurement Period: February 2021

Day wise data	Consortium Daily Output (ton)	Consortium Cumulative Total	BCMCL Daily Output	BCMCL Cumulative Total	Remarks
1-Feb-2021	3,757.09	3,757.09	3,757.09	3,757.09	
2-Feb-2021	3,314.50	7,071.59	3,314.50	7,071.59	
3-Feb-2021	3,617.03	10,688.62	3,617.03	10,688.62	
4-Feb-2021	3,646.63	14,335.25	3,646.63	14,335.25	
5-Feb-2021	3,392.19	17,727.44	3,392.19	17,727.44	
6-Feb-2021	3,402.08	21,129.52	3,402.08	21,129.52	
7-Feb-2021	3,083.69	24,213.21	3,083.69	24,213.21	
8-Feb-2021	3,605.02	27,818.23	3,605.02	27,818.23	
9-Feb-2021	3,124.69	30,942.92	3,124.69	30,942.92	
10-Feb-2021	3,468.31	34,411.23	3,468.31	34,411.23	
11-Feb-2021	3,627.44	38,038.67	3,627.44	38,038.67	
12-Feb-2021	3,132.35	41,171.02	3,132.35	41,171.02	
13-Feb-2021	1,839.62	43,010.64	1,839.62	43,010.64	
14-Feb-2021	3,017.57	46,028.21	3,017.57	46,028.21	
15-Feb-2021	3,380.60	49,408.81	3,380.60	49,408.81	
16-Feb-2021	3,781.38	53,190.19	3,781.38	53,190.19	
17-Feb-2021	3,022.76	56,212.95	3,022.76	56,212.95	
18-Feb-2021	3,659.28	59,872.23	3,659.28	59,872.23	
19-Feb-2021	3,310.96	63,183.19	3,310.96	63,183.19	
20-Feb-2021	3,619.98	66,803.17	3,619.98	66,803.17	
21-Feb-2021	3,581.63	70,384.80	3,581.63	70,384.80	
22-Feb-2021	2,401.10	72,785.90	2,401.10	72,785.90	
23-Feb-2021	3,414.37	76,200.27	3,414.37	76,200.27	
24-Feb-2021	2,969.07	79,169.34	2,969.07	79,169.34	
25-Feb-2021	3,633.66	82,803.00	3,633.66	82,803.00	
26-Feb-2021	3,770.69	86,573.69	3,770.69	86,573.69	
27-Feb-2021	3,512.32	90,086.01	3,512.32	90,086.01	
28-Feb-2021	3,789.69	93,875.70	3,789.69	93,875.70	

less Difference in Water Content:	4607.87
Less Out of Seam dilution:	0
Coal adjustment for scale recalibration	172.72
Output (tons) measured by Belt Weigher:	89,095.11
Tonnes mined in DARR	0
Net Output after removing DARR	89,095.11

Barapukuria Coal Mine Daywise Data Graph for February 2021



আসুন, যানবাহনসমূহকে অটোগ্যাসে রূপান্তর করি...

জাতীয় সম্পদ প্রাকৃতিক গ্যাস সাশ্রয় করি...

facebook

"Energy misused, cannot be excused"

আমাদের ঘরে যদি এখনো কয়েল স্টার্টার যুক্ত টিউবলাইট থেকে থাকে, আসুন আজই LED টিউবলাইট দ্বারা প্রতিস্থাপন করি।

HYDROCARBON UNIT ON FACEBOOK

“আসুন আমাদের জাতীয় সম্পদ প্রাকৃতিক গ্যাস সাশ্রয় করি”

১। **LPG** ব্যবহার করুন..

অবৈধ গ্যাস সংযোগ থেকে বিরত থাকুন

২। **CNG** নয়, অকটেন দিয়ে গাড়ি চালান...

গাড়ির ইঞ্জিনের আয়ুষ্কাল বাড়ান

চলুন আজই যানবাহনসমূহ AUTO GAS (LPG) এ রূপান্তর করি...

- * CNG এর তুলনায় LPG কনভারশনে ৫০% কম খরচ হয়
- * ৩-৫ মিনিটে ট্যাংকে ফুয়েল ভর্তি হয়, লম্বা লাইনে দাঁড়িয়ে অপেক্ষা করার প্রয়োজন পরে না
- * CNG এর তুলনায় সিলিন্ডারে জায়গা, ওজন ও প্রেশার কম দরকার
- * রক্ষণাবেক্ষণের খরচ কম
- * পেট্রলের তুলনায় AUTO GAS -এ খরচ প্রায় ৫০% কম
- * গ্যাসোলিন ও ডিজেলের তুলনায় নিঃসরণ কম

Hydrocarbon Unit

Energy & Mineral Resources Division
Ministry of Power, Energy & Mineral Resources
153, Pioneer Road
Segunbagicha, Dhaka-1000
www.hcuro.gov.bd