

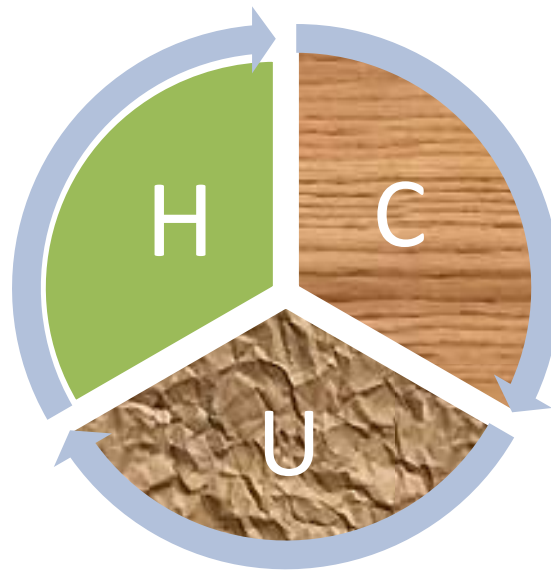


# HYDROCARBON UNIT

Energy and Mineral Resources Division

## Gas and Coal Reserve & Production

February 2020



## Gas Reserve & Production at a glance

Gas Initially in Place (GIIP)	:	40,092.19 Bcf
Recoverable (2P)	:	30,055.40 Bcf
Cumulative Production as of February 2020	:	17,526.58 Bcf
Remaining Reserve up to February 2020	:	12,528.82 Bcf
Gas Production in February 2020	:	74.54 Bcf
National Oil Company (NOC's) production in February 2020	:	27.66 Bcf
International Oil Company (IOC's) production in February 2020	:	46.88 Bcf
No. of National Oil Company (NOC's) in February 2020	:	3 (BGFL, BAPEx, SGFL)
No. of International Oil Company (IOC's) in February 2020	:	2 (Chevron, Tullow)
Total gas fields of National Oil Company (NOC) in February 2020	:	21
Total gas fields of International Oil Company (IOC) in February 2020	:	5
Total gas wells of National Oil Company (NOC) in February 2020	:	115
Total gas wells of International Oil Company (IOC) in February 2020	:	60
No. of National Oil Company (NOC's) gas production well in February 2020	:	70
No. of International Oil Company (IOC's) gas production well in February 2020	:	42
No. of National Oil company (NOC's) suspended well in February 2020	:	45
No. of International Oil company (IOC's) suspended well in February 2020	:	18
Total LNG Import in February 2020	:	18.00 Bcf
Cumulative LNG Import till February 2020	:	251.65 Bcf

## Executive Summary of February 2020

Total gas and condensate Production in February 2020 were 74.54 Bcf and 331257.80 Bbl. In the previous month i.e. January 2020, gas and condensate production were 79.32 Bcf and 346532.40 Bbl and in the same month of the previous year i.e. February 2019, total gas and condensate production were 72.98 Bcf and 320371.90 Bbl respectively. The National Oil Companies (NOC's) and International Oil Companies (IOC's) Produced 27.66 Bcf and 46.88 Bcf gas respectively in February 2020. During the previous month i.e. January 2020, gas production by the National Oil Companies (NOC's) and International Oil Companies (IOC's) were 29.01 Bcf and 50.31 Bcf respectively. In the month of February 2020, Bibiyana gas field Produced 37.60 Bcf gas and it ranked top among the gas producers. Average production from the field during the month of February 2020 was 1297 Mmcfd. It is noted that Bibiyana gas field Produced 40.04 Bcf in January 2020.

During the month of February 2020 total production of condensate was 331257.80 Bbl compared to 346532.40 Bbl in the previous month i.e. January 2020. Bibiyana gas field Produced 253166.37 Bbl condensate and ranked top while Jalalabad ranked 2<sup>nd</sup> by producing 31440.97 Bbl.

In the month of February 2020 total coal production was 111,956.79 Ton. In the previous month i.e. January 2020 total coal production was 100,850.37 Ton. It indicates that 11,106.42 Ton more Coal was produced compared to previous month.

Total LNG import in February 2020 was 18.00 Bcf. As a result, cumulative LNG import stands on 251.65 Bcf till February 2020.

## **Table of Contents**

<b>Gas Report</b>	<b>Page No.</b>
Summary	1
summary of Reserve and Production	2
Production comparison between January 2020 & February 2020	3
Production per well & production reserve ratio	4
Monthly Production by Fields & Wells up to February 2020	5-12
Monthly Condensate Production by Fields up to February 2020	13-14
Monthly Water Production by Fields from February 2020	15-16
Conditions of Field and Well up to February 2020	17-21
<b>Chart</b>	
Well-wise Production of All fields in 2018-19	22
Reserve, Production and Remaining Reserve as of February 2020	23
Daily Average Gas Production from January 2013 to February 2020	24
Field wise Daily Average Production as of February 2020	25
Well wise Daily Average Production-BGFCL as of February 2020	26
Well wise Daily Average Production-BAPEX and SGFL, February 2020	27
Well wise Daily Average Production-IOC and JVA, February 2020	28
Comparison of Field wise Avg Gas Production between January 20 & February 20	29
Daily Average Production by Operator, February 2020	30
Comparison of Operator wise daily avg Production between January 20 & February 20	31
Daily Average Production – National vs IOC's, February 2020	32
Daily avg Gas Production- National vs IOC's between January 20 & February 20	33
Daily Average Production IOC's and JVA, February 2020	34
Monthly Condensate Production, February 2020	35
<b>Coal Report</b>	
Summary	36-37
Barapukuria Coal Mine-MPM and P Contract (BCMCL)	38
Barapukuria Coal Mine Day wise Data Graph for February 2020	39

## Summary of Reserve, Production & Import As of 29 February 2020

<b>Gas Initially Place (Proven + Probable)</b>	<b>40,092.19 Bcf</b>	<b>40.09 Tcf</b>
<b>Recoverable (Proven + Probable)</b>	<b>30,055.40 Bcf</b>	<b>30.06 Tcf</b>
<b>Gas Production in February 2020</b>	<b>74.54 Bcf</b>	<b>0.07 Tcf</b>
<b>Cumulative Gas Production as of February 2020</b>	<b>17,526.58 Bcf</b>	<b>17.53 Tcf</b>
<b>Remaining Reserve</b>	<b>12,528.82 Bcf</b>	<b>12.53 Tcf</b>

*NOTE: Reserve figure based on "Updated Report on Bangladesh Gas Reserve Estimation 2010", prepared by Gustavson Associates LLC, USA*

<b>Total LNG Import in February 2020</b>	<b>18.00 Bcf</b>	<b>0.02 Tcf</b>
<b>Cumulative LNG Import till February 2020</b>	<b>251.65 Bcf</b>	<b>0.25 Tcf</b>

# Summary of Reserve and Production

(As of February 2020)

Gas Bcf



SI No.	Field	2P	GIIP	2P Reserve	Gas Prod. In Feb '20	Cum. Gas Production	Remaining Reserve	Cum. Condensate Production
1	Begumganj		47.0	33.0	0.2	4.0	29.0	1
2	Shahbazpur		415.0	261.0	1.1	59.4	201.6	9
3	Semutang		654.0	318.0	0.0	13.4	304.6	5
4	Fenchuganj		483.0	329.0	0.1	160.5	168.5	116
5	Salda Nadi		393.0	275.0	0.2	93.3	181.7	59
6	Srikail*		230.0	161.0	0.9	95.4	65.6	168
7	Sundalpur *		62.2	50.2	0.2	15.0	35.2	1
8	Rupganj		48.0	33.6	0.0	0.7	32.9	1
<b>Bapex</b>			<b>2,332.2</b>	<b>1,460.8</b>	<b>2.7</b>	<b>441.6</b>	<b>1,019.2</b>	<b>358</b>
9	Meghna		122.0	101.0	0.2	72.9	28.1	116
10	Narshingdi		405.0	345.0	0.8	211.0	134.0	434
11	Kamta		72.0	50.0	0.0	21.1	28.9	4
12	Habiganj		3,981.0	2,787.0	5.5	2,512.0	275.0	138
13	Bakhrabad		1,825.0	1,387.0	1.2	828.1	558.9	1,032
14	Titas		9,039.0	7,582.0	13.3	4,851.4	2,730.6	5,390
<b>BGFCL</b>			<b>15,444.0</b>	<b>12,252.0</b>	<b>21.0</b>	<b>8,496.5</b>	<b>3,755.5</b>	<b>7,114</b>
15	Sangu		976.0	771.0	0.0	489.5	281.5	37
<b>Santos/Cairn</b>			<b>976.0</b>	<b>771.0</b>	<b>0.0</b>	<b>489.5</b>	<b>281.5</b>	<b>37</b>
16	Bibiyana**		8,383.0	4,532.0	37.6	4,130.1	401.9	24,766
17	Moulavi Bazar**		494.0	494.0	0.6	329.2	164.8	118
18	Jalalabad**		2,716.0	2,716.0	6.4	1,369.3	1,346.7	10,523
<b>Chevron</b>			<b>11,593.0</b>	<b>7,742.0</b>	<b>44.5</b>	<b>5,828.5</b>	<b>1,913.5</b>	<b>35,407</b>
19	Feni		185.0	130.0	0.0	63.0	67.0	110
<b>Niko</b>			<b>185.0</b>	<b>129.6</b>		<b>63.0</b>	<b>66.6</b>	<b>110</b>
20	Kailas Tila		3,463.0	2,880.0	1.6	751.8	2,128.2	7,991
21	Sylhet		580.0	408.0	0.1	215.9	192.1	807
22	Rashidpur		3,887.0	3,134.0	1.4	648.4	2,485.6	795
23	Chattak		677.0	474.0	0.0	25.8	448.2	4
24	Beani Bazar		225.0	137.0	0.2	98.8	38.2	1,626
<b>SGFL</b>			<b>8,832.0</b>	<b>7,033.0</b>	<b>3.3</b>	<b>1,740.8</b>	<b>5,292.2</b>	<b>11,222</b>
25	Bangura		730.0	621.0	2.9	466.6	154.4	1,188
<b>Tullow</b>			<b>730.0</b>	<b>621.0</b>	<b>2.9</b>	<b>466.6</b>	<b>154.4</b>	<b>1,188</b>
26	Kutubdia		65.0	46.0	0.0	0.0	46.0	0
<b>Total</b>			<b>40,092.2</b>	<b>30,055.4</b>	<b>74.54</b>	<b>17,526.6</b>	<b>12,528.8</b>	<b>55,436</b>

\* Preliminary reserve estimated by BAPEX

\*\* 2P reserve estimation by Petrobangla has crossed the limit. So 2P reserve is estimated as GIIP reserve now.

## Production comparison between January'20 & February'20



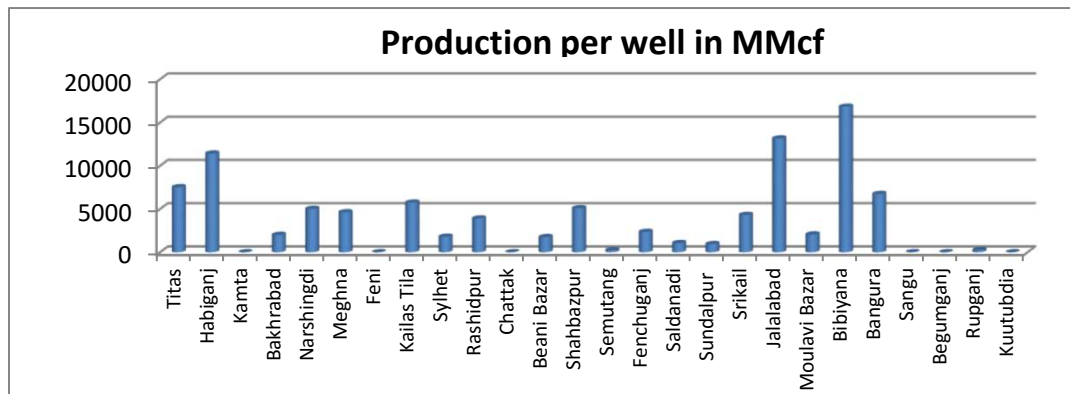
SI No.	Field	Gas Prod. (MMcf) in Jan'20	Daily Avg. (MMcfd) in Jan'20	Gas Prod. (MMcf) in Feb'20	Daily Avg. (MMcfd) in Feb'20
1	Begumganj	173	6	162	6
2	Shahbazpur	1216	39	1113	38
3	Semutang	29	1	26	1
4	Fenchuganj	105	3	102	4
5	Salda Nadi	177	6	216	7
6	Srikail	981	32	914	32
7	Sundalpur	223	7	207	7
8	Rupganj	0	0	0	0
<b>Bapex</b>		<b>2903</b>	<b>94</b>	<b>2739</b>	<b>94</b>
9	Meghna	257	8	250	9
10	Narshingdi	828	27	790	27
11	Kamta	0	0	0	0
12	Habiganj	5830	188	5521	190
13	Bakhrabad	1285	41	1200	41
14	Titas	13757	444	13255	457
<b>BGFCL</b>		<b>21957</b>	<b>708</b>	<b>21016</b>	<b>725</b>
15	Sangu	0	0	0	0
<b>Santos/Cairn</b>		<b>0</b>	<b>0</b>	<b>0</b>	<b>0</b>
16	Bibiyana	40045	1292	37602	1297
17	Moulavi Bazar	607	20	575	20
18	Jalalabad	7111	229	6352	219
<b>Chevron</b>		<b>47763</b>	<b>1541</b>	<b>44530</b>	<b>1536</b>
19	Feni	0	0	0	0
<b>Niko</b>		<b>0</b>	<b>0</b>	<b>0</b>	<b>0</b>
20	Kailas Tila	1691	55	1578	54
21	Sylhet	114	4	109	4
22	Rashidpur	1483	48	1397	48
23	Chattak	0	0	0	0
24	Beani Bazar	251	8	244	8
<b>SGFL</b>		<b>3540</b>	<b>114</b>	<b>3328</b>	<b>115</b>
25	Bangura	3158	102	2924	101
<b>Tullow</b>		<b>3158</b>	<b>102</b>	<b>2924</b>	<b>101</b>
26	Kutubdia	0	0	0	0
<b>Total</b>		<b>79320</b>	<b>2559</b>	<b>74537</b>	<b>2570</b>

## Production per well & production reserve ratio



**HYDROCARBON UNIT**  
Energy & Mineral Resources Division

	No of production well	Total 2p- Recoverable	2018-19 production	production per well mmcf	production reserve ratio
Titas	26	7582	183.36	7052.31	0.024
Habiganj	8	2787	79.21	9901.25	0.028
Kamta	0	50	0	0.00	0.000
Bakhrabad	7	1387	11	1571.43	0.008
Narshingdi	2	345	9.95	4975.00	0.029
Meghna	1	101	4.12	4120.00	0.041
Feni	0	130	0	0.00	0.000
Kailas Tila	4	2880	22.87	5717.50	0.008
Sylhet	1	408	1.5	1500.00	0.004
Rashidpur	5	3134	18.6	3720.00	0.006
Chattak	0	474	0	0.00	0.000
Beani Bazar	1	137	3.21	3210.00	0.023
Shahbazpur	4	261	20.35	5087.50	0.078
Semutang	2	318	0.28	140.00	0.001
Fenchuganj	2	329	3.41	1705.00	0.010
Saldanadi	2	275	1.56	780.00	0.006
Sundalpur	1	50.2	2.52	2520.00	0.050
Srikail	3	161	12.45	4150.00	0.077
Jalalabad	7	1346	84.14	12020.00	0.063
Moulavi Bazar	4	494	7.87	1967.50	0.016
Bibiyana	26	4532	463.74	17836.15	0.102
Bangura	5	621	32.89	6578.00	0.053
Sangu	0	771	0	0.00	0.000
Begumganj	1	33	1.71	0.00	0.052
Rupganj	0	33.6	0	0.00	0.000
Kuutubdia	0	46	0	0.00	0.000
<b>Total</b>	<b>112</b>	<b>28685.8</b>	<b>964.74</b>	<b>8613.75</b>	<b>0.034</b>





## Monthly Production by Field and Well upto February- 2020



**HYDROCARBON UNIT**  
Energy & Mineral Resources Division

Figures in mmscf

Well	Jan	Feb	Mar	Apr	May	Jun	Jul	Aug	Sep	Oct	Nov	Dec	Total	Cumulative	2019	2018	2017
<b>Field : Bakharabad</b>																	
BKB-1	432	401											833	145,295	3,295	0	0
BKB-2	27	13											40	86,989	378	445	543
BKB-3	143	139											283	162,885	1,757	1,989	2,249
BKB-4	0	0											0	55,872	0		
BKB-5	146	137											283	60,850	1,757	1,822	1,847
BKB-6	0	0											0	50,069	0	0	
BKB-7	0	0											0	107,750	0	0	0
BKB-8	238	228											465	129,291	2,565	2,017	3,462
BKB-9	208	194											402	24,109	2,585	3,332	3,637
BKB-10	91	88											180	4,946	1,092	1,297	1,453
<b>Field Total:</b>	<b>1,285</b>	<b>1,200</b>	<b>0</b>	<b>0</b>	<b>0</b>	<b>0</b>	<b>0</b>	<b>0</b>	<b>0</b>	<b>0</b>	<b>0</b>	<b>0</b>	<b>2,485</b>	<b>828,055</b>	<b>13,429</b>	<b>10,903</b>	<b>13,190</b>
Daily Avg.(mmscfd)	41	41	0	0	0	0	0	0	0	0	0	0	41		37	30	36
<b>Field : Bangura</b>																	
Bangura-1	331	306											637	94,030	4,138	4,615	4,914
Bangura-2	431	398											828	85,679	5,312	6,802	7,837
Bangura-3	517	478											995	103,916	6,195	7,265	8,662
Bangura-6	295	268											563	13,028	3,518	4,847	4,100
Bangura-5	1,584	1,475											3,059	169,978	16,177	8,410	9,699
<b>Field Total:</b>	<b>3,158</b>	<b>2,924</b>	<b>0</b>	<b>0</b>	<b>0</b>	<b>0</b>	<b>0</b>	<b>0</b>	<b>0</b>	<b>0</b>	<b>0</b>	<b>0</b>	<b>6,082</b>	<b>466,630</b>	<b>35,340</b>	<b>31,940</b>	<b>35,212</b>
Daily Avg.(mmscfd)	102	101	0	0	0	0	0	0	0	0	0	0	101		97	88	96
<b>Field : Beani Bazar</b>																	
BB-1	0	0	0	0	0	0	0	0	0	0	0	0	0	35,481	0	0	1,023
BB-2	251	244											495	63,367	3,135	3,276	3,282
<b>Field Total:</b>	<b>251</b>	<b>244</b>	<b>0</b>	<b>0</b>	<b>0</b>	<b>0</b>	<b>0</b>	<b>0</b>	<b>0</b>	<b>0</b>	<b>0</b>	<b>0</b>	<b>495</b>	<b>98,847</b>	<b>3,135</b>	<b>3,276</b>	<b>4,306</b>
Daily Avg.(mmscfd)	8	8	0	0	0	0	0	0	0	0	0	0	8		9	9	12
<b>Field : Bibiyana</b>																	
BY-1	3,116	2,351											5,467	402,807	29,455	21,743	35,595
BY-2	1,633	1,245											2,878	294,766	17,462	21,388	23,957
BY-3	973	1,026											1,999	241,830	4,562	6,249	9,904
BY-4	2,693	1,966											4,659	209,990	24,793	28,559	6,571
BY-5	35	471											506	178,641	6,168	6,131	8,117
BY-6	781	672											1,453	232,089	9,140	11,057	11,879
BY-7	2,530	1,866											4,396	275,561	26,581	23,155	32,874
BY-8	192	700											892	143,673	8,538	8,921	12,486
BY-9	43	384											428	130,209	5,164	4,093	6,247

## Monthly Production by Field and Well upto February- 2020



**HYDROCARBON UNIT**  
Energy & Mineral Resources Division

Figures in mmscf

Well	Jan	Feb	Mar	Apr	May	Jun	Jul	Aug	Sep	Oct	Nov	Dec	Total	Cumulative	2019	2018	2017
BY-10	130	1,839											1,969	359,963	22,997	30,954	32,967
BY-11	149	2,068											2,217	131,161	8,983	12,147	6,813
BY-12	134	1,797											1,931	149,033	24,399	6,835	8,284
BY-13	1,058	1,685											2,743	86,487	10,785	13,171	11,842
BY-14	869	629											1,498	101,102	8,991	11,523	15,354
BY-15	2,110	1,566											3,675	122,521	21,925	24,295	19,111
BY-16	994	726											1,720	73,038	10,246	9,264	12,541
BY-17	1,782	1,309											3,091	99,566	18,604	17,603	15,412
BY-18	2,743	1,895											4,638	152,449	30,009	31,890	29,509
BY-19	2,536	2,006											4,541	63,826	27,207	8,144	9,859
BY-20	2,388	1,846											4,234	64,779	22,699	7,840	6,533
BY-21	2,260	1,692											3,952	47,753	8,577	9,670	13,246
BY-22	1,889	1,391											3,280	130,571	19,492	24,755	27,093
BY-23	2,487	1,833											4,320	81,685	25,318	32,043	15,333
BY-24	1,042	766											1,807	70,240	10,269	13,268	13,484
BY-25	2,581	1,856											4,437	136,415	26,797	28,306	30,331
BY-26	2,896	2,018											4,914	149,908	29,429	33,853	30,446
Field Total:	40045	37602	0	0	0	0	0	0	0	0	0	0	77,647	4,130,064	458,589	446,855	445,787
Daily Avg.(mmscfd)	1292	1,297	0	0	0	0	0	0	0	0	0	0	1,294		1,256	1,224	1,221
<b>Field : Chattak</b>																	
Ch-1	Production Suspended													25,834			
Field Total:	0													25,834			
Daily Avg.(mmscfd)	0													0			
<b>Field : Fenchuganj</b>																	
Fenchuganj-2	0	0	0	0	0	0	0	0	0	0	0	0	0	38,169	0	0	0
Fenchuganj-3	101	102											203	92,718	1,877	3,186	6,192
Fenchuganj-4	3												3	29,582	305	809	441
Field Total:	105	102	0	0	0	0	0	0	0	0	0	0	206	160,469	2,182	3,994	6,633
Daily Avg.(mmscfd)	3	4	0	0	0	0	0	0	0	0	0	0	3		6	11	18
<b>Field : Feni</b>																	
Feni-1	Production Suspended								0	0	0	34,214					
Feni-2	Production Suspended								0	0	0	6,119					
Feni-3	Production Suspended								0	0	0	2,176					

## Monthly Production by Field and Well upto February- 2020



**HYDROCARBON UNIT**  
Energy & Mineral Resources Division

Figures in mmscf

Well	Jan	Feb	Mar	Apr	May	Jun	Jul	Aug	Sep	Oct	Nov	Dec	Total	Cumulative	2019	2018	2017
Feni-4	Production Suspended								0	0				14,386			
Feni-5	Production Suspended								0	0				6,127			
<b>Field Total:</b>													<b>63,023</b>				
<b>Daily Avg.(mmscfd)</b>																	
<b>Field :</b>	<b>Habiganj</b>																
Hbj-1	301	292											592	282,824	4,124	2,207	0
Hbj-2	0	0											0	275,704	0	0	0
Hbj-3	870	813											1,683	389,787	10,947	13,155	13,151
Hbj-4	870	813											1,683	384,245	10,947	13,155	13,151
Hbj-5	752	725											1,477	308,128	8,977	9,497	9,497
Hbj-6	451	432											883	168,441	5,349	5,487	5,491
Hbj-7	1,185	1,108											2,293	269,684	14,272	14,533	14,565
Hbj-8	0	0											0	11,023	0	0	0
Hbj-9	0	0											0	52,652	0	0	0
Hbj-10	852	815											1,667	265,223	10,423	13,928	14,058
Hbj-11	549	524											1,073	104,301	6,920	9,579	10,398
<b>Field Total:</b>	<b>5,830</b>	<b>5,521</b>	<b>0</b>	<b>0</b>	<b>0</b>	<b>0</b>	<b>0</b>	<b>0</b>	<b>0</b>	<b>0</b>	<b>0</b>	<b>0</b>	<b>11,351</b>	<b>2,512,011</b>	<b>71,959</b>	<b>81,540</b>	<b>80,313</b>
<b>Daily Avg.(mmscfd)</b>	188	190	0	0	0	0	0	0	0	0	0	0	189		197	223	220
<b>Field :</b>	<b>Jalalabad</b>																
JB-1	795	710											1,504	256,464	9,191	10,469	9,142
JB-2	987	881											1,867	292,863	11,400	12,973	14,517
JB-3	1,315	1,174											2,490	358,277	15,263	17,399	19,162
JB-4	658	584											1,241	285,007	4,766	5,821	7,045
JB-6	1,315	1,174											2,490	76,836	15,021	17,364	19,524
JB-7	978	881											1,859	42,645	11,396	13,053	10,324
JB-8	1,063	949											2,012	57,170	11,228	12,793	14,513
<b>Field Total:</b>	<b>7,111</b>	<b>6,352</b>	<b>0</b>	<b>0</b>	<b>0</b>	<b>0</b>	<b>0</b>	<b>0</b>	<b>0</b>	<b>0</b>	<b>0</b>	<b>0</b>	<b>13,463</b>	<b>1,369,262</b>	<b>78,265</b>	<b>89,872</b>	<b>94,226</b>
<b>Daily Avg.(mmscfd)</b>	229	219	0	0	0	0	0	0	0	0	0	0	224		214	246	258
<b>Field :</b>	<b>Kailas Tila</b>																
KTL-1	0	0											0	205,181	371	462	0

## Monthly Production by Field and Well upto February- 2020



**HYDROCARBON UNIT**  
Energy & Mineral Resources Division

Figures in mmscf

Well	Jan	Feb	Mar	Apr	May	Jun	Jul	Aug	Sep	Oct	Nov	Dec	Total	Cumulative	2019	2018	2017
KTL-2	587	555											1,142	186,455	7,166	7,190	7,242
KTL-3	134	101											235	140,638	2,583	2,947	3,255
KTL-4	189	178											366	99,100	2,639	3,336	3,680
KTL-5	0	0											0	17,923	0	0	0
KTL-6	781	744											1,525	101,655	9,042	8,950	9,086
KTL-7	0	0											0	816	0	0	0
<b>Field Total:</b>	<b>1,691</b>	<b>1,578</b>	<b>0</b>	<b>0</b>	<b>0</b>	<b>0</b>	<b>0</b>	<b>0</b>	<b>0</b>	<b>0</b>	<b>0</b>	<b>0</b>	<b>3,269</b>	<b>751,768</b>	<b>21,801</b>	<b>22,886</b>	<b>23,263</b>
<b>Daily Avg.(mmscfd)</b>	55	54	0	0	0	0	0	0	0	0	0	0	54		60	63	64
<b>Field : Kamta</b>																	
Kamta-1	Production Suspended													21,139			
<b>Field Total:</b>			0	0	0	0	0	0	0	0	0	0		21,139			
<b>Daily Avg.(mmscfd)</b>																	
<b>Field : Meghna</b>																	
M-1	257	250											507	72,939	3,458	4,538	4,625
<b>Field Total:</b>	<b>257</b>	<b>250</b>	<b>0</b>	<b>0</b>	<b>0</b>	<b>0</b>	<b>0</b>	<b>0</b>	<b>0</b>	<b>0</b>	<b>0</b>	<b>0</b>	<b>507</b>	<b>72,939</b>	<b>3,458</b>	<b>4,538</b>	<b>4,625</b>
<b>Daily Avg.(mmscfd)</b>	8	9	0	0	0	0	0	0	0	0	0	0	8		9	12	13
<b>Field : Moulavi Bazar</b>																	
MV Bazar-2	125	115											241	55,049	770	2,302	2,866
MV Bazar-3	426	357											783	160,614	2,022	3,712	4,705
MV Bazar-4	36	0											36	59,150	1,047	3,103	3,945
MV Bazar-5	0	0												66			
MV Bazar-6	20	103											123	18,357	1,886	1,734	1,676
MV Bazar-7	0	0											0	5,648	4	21	152
MV Bazar-9	0	0											0	30,337	1	1	0
<b>Field Total:</b>	<b>607</b>	<b>575</b>	<b>0</b>	<b>0</b>	<b>0</b>	<b>0</b>	<b>0</b>	<b>0</b>	<b>0</b>	<b>0</b>	<b>0</b>	<b>0</b>	<b>1,182</b>	<b>329,220</b>	<b>5,730</b>	<b>10,872</b>	<b>13,345</b>
<b>Daily Avg.(mmscfd)</b>	20	20	0	0	0	0	0	0	0	0	0	0	20		16	30	37
<b>Field : Narshingdi</b>																	
N-1	504	482											987	151,245	5,663	6,181	6,279
N-2	323	308											631	59,733	3,732	3,705	3,962
<b>Field Total:</b>	<b>828</b>	<b>790</b>	<b>0</b>	<b>0</b>	<b>0</b>	<b>0</b>	<b>0</b>	<b>0</b>	<b>0</b>	<b>0</b>	<b>0</b>	<b>0</b>	<b>1,618</b>	<b>210,978</b>	<b>9,395</b>	<b>9,886</b>	<b>10,241</b>

## Monthly Production by Field and Well upto February- 2020



**HYDROCARBON UNIT**  
Energy & Mineral Resources Division

Figures in mmscf

Well	Jan	Feb	Mar	Apr	May	Jun	Jul	Aug	Sep	Oct	Nov	Dec	Total	Cumulative	2019	2018	2017
<b>Daily Avg.(mmscfd)</b>	27	27	0	0	0	0	0	0	0	0	0	0	27		26	27	28
<b>Field : Rashidpur</b>																	
RP-1	531	510											1,041	174,409	6,305	6,505	6,625
RP-2	0	0											0	82,474	0		
RP-3	284	265											549	135,201	3,443	3,541	3,730
RP-4	241	224											465	131,246	2,886	3,227	3,516
RP-5	0	0											0	25,647	0		
RP-6	0	0											0	9,983	0	0	0
RP-7	145	134											279	66,391	1,786	2,096	2,225
RP-8	283	264											546	23,094	3,515	3,696	3,977
<b>Field Total:</b>	<b>1,483</b>	<b>1,397</b>	<b>0</b>	<b>0</b>	<b>0</b>	<b>0</b>	<b>0</b>	<b>0</b>	<b>0</b>	<b>0</b>	<b>0</b>	<b>0</b>	<b>2,880</b>	<b>648,444</b>	<b>17,936</b>	<b>19,065</b>	<b>20,074</b>
<b>Daily Avg.(mmscfd)</b>	48	48	0	0	0	0	0	0	0	0	0	0	48		49	52	55
<b>Field : Salda Nadi</b>																	
Salda-1	0	0	0	0	0	0	0	0	0	0	0	0	0	36,904	0	0	0
Salda-2	0	0	0	0	0	0	0	0	0	0	0	0	0	28,495	0	0	0
Salda-3	177	206											383	27,772	1,809	1,067	1,514
Salda-4	0	10											10	156	29	70	14
<b>Field Total:</b>	<b>177</b>	<b>216</b>	<b>0</b>	<b>0</b>	<b>0</b>	<b>0</b>	<b>0</b>	<b>0</b>	<b>0</b>	<b>0</b>	<b>0</b>	<b>0</b>	<b>393</b>	<b>93,327</b>	<b>1,838</b>	<b>1,137</b>	<b>1,527</b>
<b>Daily Avg.(mmscfd)</b>	6	7	0	0	0	0	0	0	0	0	0	0	7		5	3	4
<b>Field : Sangu</b>																	
Sangu-1	0	0	0	0	0	0	0	0	0	0	0	0	0	116,191	0	0	0
Sangu-3z	0	0	0	0	0	0	0	0	0	0	0	0	0	131,796	0	0	0
Sangu-4	0	0	0	0	0	0	0	0	0	0	0	0	0	87,280			
Sangu-5	0	0	0	0	0	0	0	0	0	0	0	0	0	61,674			
Sangu-7	0	0	0	0	0	0	0	0	0	0	0	0	0	18,202			
Sangu-8	0	0	0	0	0	0	0	0	0	0	0	0	0	37,619			
Sangu-9	0	0	0	0	0	0	0	0	0	0	0	0	0	30,638	0	0	0
Sangu-10	Production Suspended						0	0	0	0	0	0	0				
Sangu-11	0	0	0	0	0	0	0	0	0	0	0	0	0	6,067	0	0	0
<b>Field Total:</b>	<b>0</b>	<b>0</b>	<b>0</b>	<b>0</b>	<b>0</b>	<b>0</b>	<b>0</b>	<b>0</b>	<b>0</b>	<b>0</b>	<b>0</b>	<b>0</b>	<b>0</b>	<b>489,467</b>	<b>0</b>	<b>0</b>	<b>0</b>

## Monthly Production by Field and Well upto February- 2020



**HYDROCARBON UNIT**  
Energy & Mineral Resources Division

Figures in mmscf

Well	Jan	Feb	Mar	Apr	May	Jun	Jul	Aug	Sep	Oct	Nov	Dec	Total	Cumulative	2019	2018	2017
<b>Daily Avg.(mmscfd)</b>	0	0	0	0	0	0	0	0	0	0	0	0	0		0	0	0
<b>Field :</b>	<b>Semutang</b>																
Semutang-5	12	10											22	12,227	140	291	471
Semutang-6	17	16											33	1,149	161	84	66
<b>Field Total:</b>	<b>29</b>	<b>26</b>	<b>0</b>	<b>0</b>	<b>0</b>	<b>0</b>	<b>0</b>	<b>0</b>	<b>0</b>	<b>0</b>	<b>0</b>	<b>0</b>	<b>54</b>	<b>13,376</b>	<b>301</b>	<b>375</b>	<b>537</b>
<b>Daily Avg.(mmscfd)</b>	1	1	0	0	0	0	0	0	0	0	0	0	1		1	1	1
<b>Field :</b>	<b>Shahbazpur</b>																
Shahbazpur-1	230	0											230	22,462	874	134	4,835
Shahbazpur-2	4	178											182	17,460	6,196	6,650	4,243
Shahbazpur-3	626	592											1,218		6,668	5,222	1,162
Shahbazpur-4	355	342											698	19,465	5,764	6,936	1,801
<b>Field Total:</b>	<b>1,216</b>	<b>1,113</b>	<b>0</b>	<b>0</b>	<b>0</b>	<b>0</b>	<b>0</b>	<b>0</b>	<b>0</b>	<b>0</b>	<b>0</b>	<b>0</b>	<b>2,329</b>	<b>59,387</b>	<b>19,501</b>	<b>18,943</b>	<b>12,041</b>
<b>Daily Avg.(mmscfd)</b>	39	38	0	0	0	0	0	0	0	0	0	0	39		53	52	33
<b>Field</b>	<b>Srikail</b>																
Srikail-2	426	387											813	44,044	5,288	5,154	5,384
Srikail-3	319	301											621	39,440	3,988	4,273	4,944
Srikail-4	236	226											462	11,933	3,026	2,971	3,439
<b>Field Total:</b>	<b>981</b>	<b>914</b>	<b>0</b>	<b>0</b>	<b>0</b>	<b>0</b>	<b>0</b>	<b>0</b>	<b>0</b>	<b>0</b>	<b>0</b>	<b>0</b>	<b>1,896</b>	<b>95,417</b>	<b>12,301</b>	<b>12,398</b>	<b>13,767</b>
<b>Daily Avg.(mmscfd)</b>	32	32	0	0	0	0	0	0	0	0	0	0	32		34	34	38
<b>Field :</b>	<b>Sundalpur</b>																
Sundalpur -1	0	0	0		0	0	0	0	0	0	0	0	0	9,809	0	0	0
Sundalpur -2	223	207											430	5,178	2,572	2,176	0
<b>Field Total:</b>	<b>223</b>	<b>207</b>	<b>0</b>	<b>0</b>	<b>0</b>	<b>0</b>	<b>0</b>	<b>0</b>	<b>0</b>	<b>0</b>	<b>0</b>	<b>0</b>	<b>430</b>	<b>14,987</b>	<b>2,572</b>	<b>2,176</b>	<b>0</b>
<b>Daily Avg.(mmscfd)</b>	7	7	0	0	0	0	0	0	0	0	0	0	7		7	6	0
<b>Field :</b>	<b>Sylhet</b>																
Sylhet-3	Production Suspended													89,032			
Sylhet-6	Production Suspended													91,748			
Sylhet-7	114	109											224	28,587	1,373	1,622	2,061
Surma-1	0	0	0	0	0	0	0	0	0	0	0	0	0	6,528	0	0	249

## Monthly Production by Field and Well upto February- 2020



**HYDROCARBON UNIT**  
Energy & Mineral Resources Division

Figures in mmscf

Well	Jan	Feb	Mar	Apr	May	Jun	Jul	Aug	Sep	Oct	Nov	Dec	Total	Cumulative	2019	2018	2017
<b>Field Total:</b>	<b>114</b>	<b>109</b>	<b>0</b>	<b>0</b>	<b>0</b>	<b>0</b>	<b>0</b>	<b>0</b>	<b>0</b>	<b>0</b>	<b>0</b>	<b>0</b>	<b>224</b>	<b>215,895</b>	<b>1,373</b>	<b>1,622</b>	<b>2,309</b>
<b>Daily Avg.(mmscfd)</b>	4	4	0	0	0	0	0	0	0	0	0	0	4		4	4	6
<b>Field :</b>	<b>Titas</b>																
Titas-1	548	510											1,058	447,334	6,648	8,516	7,897
Titas-2	912	848											1,760	448,141	10,877	11,522	11,506
Titas-3	0												0	314,888	0	0	
Titas-4	906	837											1,743	383,208	11,013	11,726	11,798
Titas-5	1,003	926											1,929	441,901	11,720	11,838	11,869
Titas-6	881	821											1,702	374,443	9,613	12,030	12,029
Titas-7	854	814											1,668	356,776	10,244	11,919	11,707
Titas-8	525	454											979	279,465	5,851	6,154	6,889
Titas-9	6	468											474	283,163	6,200	6,706	8,246
Titas-10	671	624											1,295	208,164	7,869	7,612	7,431
Titas-11	844	781											1,625	257,360	8,834	9,998	10,276
Titas-12	468	440											907	106,921	5,239	5,160	5,168
Titas-13	0	0											0	194,541	4,449	6,952	7,879
Titas-14	509	474											983	157,038	6,070	7,203	8,309
Titas-15	406	376											782	145,274	4,978	5,543	7,973
Titas-16	590	555											1,145	154,700	7,209	8,605	10,060
Titas-17	493	455											948	46,245	5,794	6,335	7,011
Titas-18	521	485											1,006	45,124	6,113	6,664	7,168
Titas-19	469	437											906	34,547	5,592	6,115	6,106
Titas-20	311	293											603	23,020	3,589	3,914	3,635
Titas-21	254	243											497	12,765	3,036	2,995	2,800
Titas-22	220	206											426	27,976	3,133	4,158	4,336
Titas-27	495	464											959	35,400	5,602	5,827	6,136
Titas-23	462	426											887	15,971	5,079	5,594	4,410
Titas-24	147	141											288	8,069	2,789	2,709	2,283
Titas-25	471	440											910	19,548	6,424	6,324	5,622
Titas-26	792	740											1,532	29,425	8,628	9,672	9,210
<b>Field Total:</b>	<b>13,757</b>	<b>13,255</b>	<b>0</b>	<b>0</b>	<b>0</b>	<b>0</b>	<b>0</b>	<b>0</b>	<b>0</b>	<b>0</b>	<b>0</b>	<b>0</b>	<b>27,012</b>	<b>4,851,410</b>	<b>172,591</b>	<b>191,792</b>	<b>197,756</b>
<b>Daily Avg.(mmscfd)</b>	444	457	0	0	0	0	0	0	0	0	0	0	450		473	525	542

## Monthly Production by Field and Well upto February- 2020



**HYDROCARBON UNIT**  
Energy & Mineral Resources Division

Figures in mmscf

Well	Jan	Feb	Mar	Apr	May	Jun	Jul	Aug	Sep	Oct	Nov	Dec	Total	Cumulative	2019	2018	2017
<b>Field : Begumganj</b>																	
<b>Begumganj-3</b>	173	162											335	3,954	2,150	593	0
<b>Field Total:</b>	<b>173</b>	<b>162</b>	<b>0</b>	<b>0</b>	<b>0</b>	<b>0</b>	<b>0</b>	<b>0</b>	<b>0</b>	<b>0</b>	<b>0</b>	<b>0</b>	<b>335</b>	<b>3,954</b>	<b>2,150</b>	<b>593</b>	<b>0</b>
<b>Daily Avg.(mmscfd)</b>	6	6	0	0	0	0	0	0	0	0	0	0	6		6	2	0
<b>Field : Rupganj</b>																	
<b>Rupganj-1</b>	0	0	0										0	679	0	0	679
<b>Field Total:</b>	<b>0</b>	<b>0</b>	<b>0</b>	<b>0</b>	<b>0</b>	<b>0</b>	<b>0</b>	<b>0</b>	<b>0</b>	<b>0</b>	<b>0</b>	<b>0</b>	<b>0</b>	<b>679</b>	<b>0</b>	<b>0</b>	<b>679</b>
<b>Daily Avg.(mmscfd)</b>	0	0	0	0	0	0	0	0	0	0	0	0	0		0	0	2
<b>Grand Total (in Bcf)</b>	79.32	74.54	0.00	0.00	0.00	0.00	0	0.00	0.00	0.00	0.00	0.00	153.9	17,526.58	933.8	964.7	979.8
<b>Daily Avg.(mmscfd)</b>	2,559	2,570	0	0	0	0	0	0	0	0	0	0	2,564		2,558	2,643	2,684



## Monthly Condensate Production by Fields upto February 2020



Field Name	Jan-20	Feb-20	Mar-20	Apr-20	May-20	Jun-20	Jul-20	Aug-20	Sep-20	Oct-20	Nov-20	Dec-20	Total	Cumulative 000' bbl	2019	2018	2017	
Bakhrabad	1,884	1,750											3,634	1,032	8,201	5,022	6,173	
Daily Avg.	61	60	0	0	0	0	0	0	0	0	0	0	61		22	14	17	
Bangura	9,402	9,091											18,493	1,188	104,034	94,737	103,198	
Daily Avg.	303	313	0	0	0	0	0	0	0	0	0	0	308		285	260	283	
Beani Bazar	4,054	3,913											7,967	1,626	50,497	51,187	68,202	
Daily Avg.	131	135	0	0	0	0	0	27	0	0	0	0	133		138	140	187	
Bibiyana	264,088	253,166											517,254	24,766	3,094,275	3,267,318	3,283,757	
Daily Avg.	8,519	8,730	0	0	0	0	0	0	0	0	0	0	8,621		8,477	8,952	8,997	
Chattak	0	0	0	0	0	0	0	0	0	0	0	0	0	4	0	0	0	
Daily Avg.	0	0	0	0	0	0	0	0	0	0	0	0	0		0	0	0	
Fenchuganj	35	41											76	116	738	1,625	2,462	
Daily Avg.	1	1	0	0	0	0	0	0	0	0	0	0	1		2	4	7	
Feni	0	0	0	0	0	0	0	0	0	0	0	0	0	110	0	0	0	
Daily Avg.	0	0	0	0	0	0	0	0	0	0	0	0	0		0	0	0	
Habiganj	531	542											1,073	138	7,233	5,612	3,955	
Daily Avg.	17	19	0	0	0	0	0	0	0	0	0	0	18		20	15	11	
Jalalabad	34,240	31,441											65,681	10,523	318,424	367,160	437,070	
Daily Avg.	1,105	1,084	0	0	0	0	0	0	0	0	0	0	1,095		872	1,006	1,197	
Kailas Tila	12,599	12,646											25,245	7,991	170,713	189,620	203,979	
Daily Avg.	406	436	0	0	0	0	0	0	0	0	0	0	421		468	520	559	
Kamta	Production Suspended										0	0		4				
Daily Avg.											0	0		0		0	0	0
Meghna	575	529											1,104	116	7,098	7,947	7,741	
Daily Avg.	19	18	0	0	0	0	0	0	0	0	0	0	18		19	22	21	
Moulavi Bazar	194	113											308	118	745	856	1,128	
Daily Avg.	6	4	0	0	0	0	0	0	0	0	0	0	5		2	2	3	

## Monthly Condensate Production by Fields upto February 2020



Field Name	Jan-20	Feb-20	Mar-20	Apr-20	May-20	Jun-20	Jul-20	Aug-20	Sep-20	Oct-20	Nov-20	Dec-20	Total	Cumulative	2019	2018	2017
													000' bbl				
Narshingdi	1,269	1,165											2,434	434	14,029	15,797	16,656
Daily Avg.	41	40	0	0	0	0	0	0	0	0	0	0	41		38	43	46
Rashidpur	1,472	1,367											2,839	795	16,268	14,393	10,723
Daily Avg.	47	47	0	0	0	0	0	0	0	0	0	0	47		45	39	29
Saldanadi	24	20											45	59	302	137	225
Daily Avg.	1	1	0	0	0	0	0	0	0	0	0	0	1		1	0	1
Sangu	0	0	0	0	0	0	0	0	0	0	0	0	0	37	0	0	0
Daily Avg.	0	0	0	0	0	0	0	0	0	0	0	0	0		0	0	0
Semutang	0	0											0	5	4	26	99
Daily Avg.	0	0	0	0	0	0	0	0	0	0	0	0	0		0	0	0
Shahbazpur	120	131											251	9	2,034	2,488	1,791
Daily Avg.	4	5	0	0	0	0	0	0	0	0	0	0	4		6	7	5
Srikail	2,591	2,685											5,276	168	34,193	33,765	37,879
Daily Avg.	84	93	0	0	0	0	0	0	0	0	0	0	88		94	93	104
Sundalpur	12	9											21	1	172	121	0
Daily Avg.	0	0	0	0	0	0	0	0	0	0	0	0	0		0	0	0
Sylhet	900	901											1,801	807	9,691	10,277	15,593
Daily Avg.	29	31	0	0	0	0	0	0	0	0	0	0	30		27	28	43
Titas	12,479	11,693											24,172	5,390	141,979	159,803	154,262
Daily Avg.	403	403	0	0	0	0	0	0	0	0	0	0	403		389	438	423
Begumganj	63	53											116	1	711	201	0
Daily Avg.	2	0	0	0	0	0	0	0	0	0	0	0	2		2	1	0
Rupganj	0	0	0	0	0	0	0	0	0	0	0	0	0	1	0	0	1,133
Daily Avg.	0	0	0	0	0	0	0	0	0	0	0	0	0		0	0	3
<b>Total (000'bbl)</b>	<b>347</b>	<b>331</b>	<b>0</b>	<b>0</b>	<b>0</b>	<b>0</b>	<b>0</b>	<b>0</b>	<b>0</b>	<b>0</b>	<b>0</b>	<b>0</b>	<b>678</b>	<b>55,436</b>	<b>3,981</b>	<b>4,228</b>	<b>4,356</b>
<b>Daily Avg. (000'bbl)</b>	<b>11.2</b>	<b>11.4</b>	<b>0.0</b>	<b>0.0</b>	<b>0.0</b>	<b>0</b>	<b>0.0</b>	<b>0.0</b>	<b>0.0</b>	<b>0.0</b>	<b>0</b>	<b>0</b>	<b>11</b>		<b>10.9</b>	<b>11.6</b>	<b>11.9</b>

Note: Historical condensate figure of Sangu available from 2006. Sylhet available from August 1964

## Monthly Water Production by Fields in February 2020



**HYDROCARBON UNIT**  
Energy & Mineral Resources Division

Field Name	Jan-20	Feb-20	Mar-20	Apr-20	May-20	Jun-20	Jul-20	Aug-20	Sep-20	Oct-20	Nov-20	Dec-20	Total	2019	
Bakhrabad	2,447	2,122											4,569	25,025	28,218
Daily Avg.	79	73	0	0	0	0	0	0	0	0	0	0	76	69	77
Bangura	3,530	3,282											6,812	38,297	43,917
Daily Avg.	114	113	0	0	0	0	0	0	0	0	0	0	114	105	120
Beani Bazar	12,271	12,741											25,012	130,468	109,854
Daily Avg.	396	439	0	0	0	0	0	0	0	0	0	0	417	357	301
Bibiyana	16,735	15,786											32,521	194,287	194,651
Daily Avg.	540	544	0	0	0	0	0	0	0	0	0	0	542	532	533
Chattak	0	0	0	0	0	0	0	0	0	0	0	0			
Daily Avg.	0	0	0	0	0	0	0	0	0	0	0	0	0	0	0
Fenchuganj	1,743	1,881											3,623	34,864	74,969
Daily Avg.	56	65	0	0	0	0	0	0	0	0	0	0	60	96	205
Feni	0	0	0	0	0	0	0	0	0	0	0	0	0	0	0
Daily Avg.	0	0	0	0	0	0	0	0	0	0	0	0	0	0	0
Habiganj	849	943											1,792	12,931	39,104
Daily Avg.	27	33	0	0	0	0	0	0	0	0	0	0	30	35	107
Jalalabad	9,322	8,854											18,176	57,962	55,950
Daily Avg.	301	305	0	0	0	0	0	0	0	0	0	0	303	159	153
Kailas Tila	17,780	19,550											37,330	68,693	43,233
Daily Avg.	574	674	0	0	0	0	0	0	0	0	0	0	622	188	118
Kamta	0	0	0	0	0	0	0	0	0	0	0	0			
Daily Avg.	0	0	0	0	0	0	0	0	0	0	0	0	0	0	0
Meghna	1,105	1,074											2,179	8,048	2,014
Daily Avg.	36	37	0	0	0	0	0	0	0	0	0	0	36	22	6
Moulavi Baza	423	283											706	5,447	13,965
Daily Avg.	14	10	0	0	0	0	0	0	0	0	0	0	12	15	38
Narshingdi	915	855											1,770	10,069	10,374
Daily Avg.	30	29	0	0	0	0	0	0	0	0	0	0	30	28	28
Rashidpur	13,644	12,554											26,198	158,452	137,406
Daily Avg.	440	433	0	0	0	0	0	0	0	0	0	0	437	434	376
Saldanadi	136	129											265	1,570	813
Daily Avg.	4	4	0	0	0	0	0	0	0	0	0	0	4	4	2

## Monthly Water Production by Fields in February 2020



**HYDROCARBON UNIT**  
Energy & Mineral Resources Division

Field Name	Jan-20	Feb-20	Mar-20	Apr-20	May-20	Jun-20	Jul-20	Aug-20	Sep-20	Oct-20	Nov-20	Dec-20	Total	2019	
Sangu	0	0	0	0	0	0	0	0	0	0	0	0	0	0	0
Daily Avg.	0	0	0	0	0	0	0	0	0	0	0	0	0	0	0
Semutang	146	127											273	966	3,002
Daily Avg.	5	4	0	0	0	0	0	0	0	0	0	0	5	3	8
Shahbazpur	1,491	1,361											2,852	23,785	22,110
Daily Avg.	48	47	0	0	0	0	0	0	0	0	0	0	48	65	61
Srikail	1,606	1,511											3,117	19,783	18,432
Daily Avg.	52	52	0	0	0	0	0	0	0	0	0	0	52	54	50
Sundalpur	33	29											62	354	219
Daily Avg.	1	1	0	0	0	0	0	0	0	0	0	0	1	1	1
Sylhet	5,906	9,948											15,854	39,488	20,362
Daily Avg.	191	343	0	0	0	0	0	0	0	0	0	0	264	108	56
Titas	26,186	24,901											51,087	517,843	556,608
Daily Avg.	845	859	0	0	0	0	0	0	0	0	0	0	851	1,419	1,525
Begumganj	67	63											130	738	207
Daily Avg.	2	2	0	0	0	0	0	0	0	0	0	0	2	2	1
Rupganj	0	0	0	0	0	0	0	0	0	0	0	0	0	0	0
Daily Avg.	0	0	0	0	0	0	0	0	0	0	0	0	0	0	0
<b>Total (000'bl</b>	<b>116,336</b>	<b>117,993</b>	<b>0</b>	<b>0</b>	<b>0</b>	<b>0</b>	<b>0</b>	<b>0</b>	<b>0</b>	<b>0</b>	<b>0</b>	<b>0</b>	<b>234,329</b>	<b>1,349,070</b>	<b>1,375,408</b>
<b>Daily Avg. (000'bbl)</b>	<b>3,753</b>	<b>4,069</b>	<b>0</b>	<b>0</b>	<b>0</b>	<b>0</b>	<b>0</b>	<b>0</b>	<b>0</b>	<b>0</b>	<b>0</b>	<b>0</b>	<b>3,905</b>	<b>3,696</b>	<b>3,768</b>

## Conditions of Field and Well upto February 2020



Well	company	well type	Discovery	production start	Drilled depth (ft)	Pressure	Pressure type	Completion Zone
<b>Field : Bakharabad</b>								
BKB-1	BGFCL	Vertical	1969	June,1969	9309		FWHP	J
BKB-2	BGFCL	Directional	1969	October,1981	7496	248-274	FWHP	G
BKB-3	BGFCL	Directional	1969	April,1982	9339	356-412	FWHP	G
BKB-4	BGFCL	Directional	1969	June,1982	9430			D
BKB-5	BGFCL	Directional	1969	Sept,1982	9675	1555-1646	FWHP	B
BKB-6	BGFCL	Directional	1969	March,1989	8785			J
BKB-7	BGFCL	Directional	1969	July,1989	8605		FWHP	J
BKB-8	BGFCL	Directional	1969	Sept,1989	8840	490-523	FWHP	J
BKB-9	BGFCL	Vertical	1969	August,2013	8318	1005-1097	FWHP	G
BKB-10	BGFCL	Directional	1969	June,2016	9291	1010-1102	FWHP	K
<b>Field : Bangura</b>								
Bangura-1	Tullow		2004			887-940	FWHP	D
Bangura-2	Tullow		2004			587-685	FWHP	D/E
Bangura-3	Tullow		2004			719-789	FWHP	D
Bangura-6	Tullow		2004			708-780	FWHP	D
Bangura-5	Tullow		2004			579-621	FWHP	D
<b>Field : Beani Bazar</b>								
BB-1	SGFL		1981	July,1999	13480	580-620	SIWHP	Upper
BB-2	SGFL		1981	July,1999	12048	3210-3220	FWHP	Upper
<b>Field : Bibiyana</b>								
BY-1	Chevron		1998			1547-2007	FWHP	BB60, BB66
BY-2	Chevron		1998			1313-1390	FWHP	BB60, BH20A, BH20E
BY-3	Chevron		1998			1363-1403	FWHP	BB70
BY-4	Chevron		1998			1330-1390	FWHP	BH10
BY-5	Chevron		1998			1254-1299	FWHP	BH20A, BH20B, BH20C, BH20D
BY-6	Chevron		1998			1250-1486	FWHP	BB70
BY-7	Chevron		1998			1454-1566	FWHP	BH10
BY-8	Chevron		1998			1270-1297	FWHP	BH20A, BH20B
BY-9	Chevron		1998			1243-1273	FWHP	BH10
BY-10	Chevron		1998			1465-1533	FWHP	BB60
BY-11	Chevron		1998			1260-1284	FWHP	BH20A, BH20B
BY-12	Chevron		1998			1259-1332	FWHP	BB70
BY-13	Chevron		1998			1300-1356	FWHP	BH20A, BH20B
BY-14	Chevron		1998			1342-1632	FWHP	BH20A, BH20B
BY-15	Chevron		1998			2189-2240	FWHP	BB60
BY-16	Chevron		1998			1381-1644	FWHP	BH10, BH20D

## Conditions of Field and Well upto February 2020



Well	company	well type	Discovery	production start	Drilled depth (ft)	Pressure	Pressure type	Completion Zone
BY-17	<i>Chevron</i>		<i>1998</i>			<i>2104-2229</i>	<i>FWHP</i>	<i>BB60</i>
BY-18	<i>Chevron</i>		<i>1998</i>			<i>1904-2218</i>	<i>FWHP</i>	<i>BB60</i>
BY-19	<i>Chevron</i>		<i>1998</i>			<i>1354-1477</i>	<i>FWHP</i>	<i>BH10, BH20A</i>
BY-20	<i>Chevron</i>		<i>1998</i>			<i>1248-1262</i>	<i>FWHP</i>	<i>BH20D, BH20A, BH10</i>
BY-21	<i>Chevron</i>		<i>1998</i>			<i>1333-1348</i>	<i>FWHP</i>	<i>BH20A, BH20B, BH10</i>
BY-22	<i>Chevron</i>		<i>1998</i>			<i>1552-1586</i>	<i>FWHP</i>	<i>BB60</i>
BY-23	<i>Chevron</i>		<i>1998</i>			<i>1739-2021</i>	<i>FWHP</i>	<i>BH10, BH20A, BH20B, BH20C</i>
BY-24	<i>Chevron</i>		<i>1998</i>			<i>1337-2091</i>	<i>FWHP</i>	<i>BB60</i>
BY-25	<i>Chevron</i>		<i>1998</i>			<i>1728-1857</i>	<i>FWHP</i>	<i>BB60, BB66</i>
BY-26	<i>Chevron</i>		<i>1998</i>			<i>1877-2094</i>	<i>FWHP</i>	<i>BB60, BB64</i>
<b>Field : Chattak</b>								
Ch-1	SGFL		1959					
<b>Field : Fenchuganj</b>								
Fenchuganj-2	<i>BAPEX</i>		<i>1988</i>	<i>May, 2004</i>				
Fenchuganj-3	<i>BAPEX</i>		<i>1988</i>	<i>February, 2005</i>		<i>2004-2010</i>		<i>upper</i>
Fenchuganj-4	<i>BAPEX</i>		<i>1988</i>			<i>2037-2065</i>		
<b>Field : Feni</b>								
Feni-1	<i>BAPEX</i>		<i>1981</i>					
Feni-2	<i>BAPEX</i>		<i>1981</i>					
Feni-3	<i>BAPEX</i>		<i>1981</i>					
Feni-4	<i>BAPEX</i>		<i>1981</i>					
Feni-5	<i>BAPEX</i>		<i>1981</i>					
<b>Field : Habiganj</b>								
Hbj-1	<i>BGFCL</i>	<i>Vertical</i>	<i>1963</i>	<i>Feb,1969</i>	<i>11500</i>		<i>FWHP</i>	<i>upper</i>
Hbj-2	<i>BGFCL</i>	<i>Vertical</i>	<i>1963</i>	<i>Feb,1969</i>	<i>5100</i>		<i>FWHP</i>	<i>upper</i>
Hbj-3	<i>BGFCL</i>	<i>Vertical</i>	<i>1963</i>	<i>July,1985</i>	<i>5282</i>	<i>1478-1486</i>	<i>FWHP</i>	<i>upper</i>
Hbj-4	<i>BGFCL</i>	<i>Vertical</i>	<i>1963</i>	<i>May,1985</i>	<i>5249</i>	<i>1460-1467</i>	<i>FWHP</i>	<i>upper</i>
Hbj-5	<i>BGFCL</i>	<i>Directional</i>	<i>1963</i>	<i>Feb,1992</i>	<i>11552</i>	<i>1440-1446</i>	<i>FWHP</i>	<i>upper</i>
Hbj-6	<i>BGFCL</i>	<i>Vertical</i>	<i>1963</i>	<i>Feb,1992</i>	<i>5515</i>	<i>1375-1379</i>	<i>FWHP</i>	<i>upper</i>
Hbj-7	<i>BGFCL</i>	<i>Vertical</i>	<i>1963</i>	<i>April,2000</i>	<i>10236</i>	<i>1331-1139</i>	<i>FWHP</i>	<i>upper</i>
Hbj-8	<i>BGFCL</i>	<i>Vertical</i>	<i>1963</i>	<i>May, 2000</i>	<i>5280</i>			<i>upper</i>
Hbj-9	<i>BGFCL</i>	<i>Vertical</i>	<i>1963</i>	<i>July,1998</i>	<i>5249</i>			<i>upper</i>
Hbj-10	<i>BGFCL</i>	<i>Vertical</i>	<i>1963</i>	<i>Apr, 2000</i>	<i>5133</i>	<i>1322-1331</i>	<i>FWHP</i>	<i>upper</i>
Hbj-11	<i>BGFCL</i>	<i>Vertical</i>	<i>1963</i>	<i>February,2008</i>	<i>10499</i>	<i>1417-1423</i>	<i>FWHP</i>	<i>upper</i>
<b>Field : Jalalabad</b>								
JB-1	<i>Chevron</i>		<i>1989</i>			<i>1333-1436</i>	<i>FWHP</i>	<i>BB60, BB50</i>

## Conditions of Field and Well upto February 2020



Well	company	well type	Discovery	production start	Drilled depth (ft)	Pressure	Pressure type	Completion Zone
JB-2	<i>Chevron</i>		<i>1989</i>			<i>1279-1294</i>	<i>FWHP</i>	<i>BB50, BB60</i>
JB-3	<i>Chevron</i>		<i>1989</i>			<i>1332-1375</i>	<i>FWHP</i>	<i>BB50, BB60</i>
JB-4	<i>Chevron</i>		<i>1989</i>			<i>1365-1425</i>	<i>FWHP</i>	<i>BB60</i>
JB-6	<i>Chevron</i>		<i>1989</i>			<i>1354-1362</i>	<i>FWHP</i>	<i>BB60, BB50</i>
JB-7	<i>Chevron</i>		<i>1989</i>			<i>1666-1679</i>	<i>FWHP</i>	<i>BB20</i>
JB-8	<i>Chevron</i>		<i>1989</i>			<i>1362-1370</i>	<i>FWHP</i>	<i>BB50, BB60</i>
<b>Field : Kailas Tila</b>								
KTL-1	<i>SGFL</i>		<i>1962</i>	<i>June, 1983</i>	<i>12417</i>	<i>0</i>	<i>SIWHP</i>	
KTL-2	<i>SGFL</i>		<i>1962</i>	<i>Feb, 1995</i>		<i>2225-2230</i>	<i>FWHP</i>	
KTL-3	<i>SGFL</i>		<i>1962</i>	<i>March, 1995</i>		<i>2470-2495</i>	<i>FWHP</i>	
KTL-4	<i>SGFL</i>		<i>1962</i>	<i>March, 1997</i>		<i>2360-2410</i>	<i>FWHP</i>	
KTL-5	<i>SGFL</i>		<i>1962</i>	<i>Sep, 2006</i>		<i>0</i>	<i>SIWHP</i>	
KTL-6	<i>SGFL</i>		<i>1962</i>	<i>Aug, 2007</i>		<i>2490-2495</i>	<i>FWHP</i>	
KTL-7	<i>SGFL</i>		<i>1962</i>			<i>0</i>	<i>SIWHP</i>	
<b>Field : Kamta</b>								
Kamta-1	<i>BGFCL</i>	<i>Vertical</i>	<i>1981</i>	<i>july,1982</i>	<i>11857</i>			<i>N/A</i>
<b>Field : Meghna</b>								
M-1	<i>BGFCL</i>	<i>Vertical</i>	<i>2004</i>	<i>july,1990</i>	<i>10069</i>	<i>1400-1450</i>	<i>FWHP</i>	<i>A,E,F &amp; G</i>
<b>Field : Moulavi Bazar</b>								
MV Bazar-2	<i>Chevron</i>		<i>1997</i>			<i>800-820</i>	<i>FWHP</i>	<i>BB70</i>
MV Bazar-3	<i>Chevron</i>		<i>1997</i>			<i>800-820</i>	<i>FWHP</i>	<i>BB70</i>
MV Bazar-4	<i>Chevron</i>		<i>1997</i>			<i>946-952</i>	<i>FWHP</i>	<i>BB20</i>
MV Bazar-5	<i>Chevron</i>		<i>1997</i>			<i>0</i>	<i>SIWHP</i>	<i>BB60</i>
MV Bazar-6	<i>Chevron</i>		<i>1997</i>			<i>822-890</i>	<i>FWHP</i>	<i>BB20</i>
MV Bazar-7	<i>Chevron</i>		<i>1997</i>			<i>844-901</i>	<i>FWHP/SIWHP</i>	<i>BB20</i>
MV Bazar-9	<i>Chevron</i>		<i>1997</i>			<i>0</i>	<i>SIWHP</i>	<i>BB46, BB48, BB60</i>
<b>Field : Narshingdi</b>								
N-1	<i>BGFCL</i>	<i>vertical</i>	<i>1990</i>	<i>october,1990</i>	<i>11320</i>	<i>1143-1197</i>	<i>FWHP</i>	<i>BL</i>
N-2	<i>BGFCL</i>	<i>vertical</i>	<i>1990</i>	<i>february,2007</i>	<i>10778</i>	<i>1015-1097</i>	<i>FWHP</i>	<i>BL</i>
<b>Field : Rashidpur</b>								
RP-1	<i>SGFL</i>		<i>1960</i>			<i>1290-1291</i>	<i>FWHP</i>	<i>Upper</i>
RP-2	<i>SGFL</i>		<i>1960</i>			<i>73</i>	<i>SIWHP</i>	<i>Lower</i>
RP-3	<i>SGFL</i>		<i>1960</i>			<i>1548-1568</i>	<i>FWHP</i>	<i>Lower</i>
RP-4	<i>SGFL</i>		<i>1960</i>			<i>1450-1655</i>	<i>FWHP</i>	<i>Lower</i>
RP-5	<i>SGFL</i>		<i>1960</i>			<i>2291</i>	<i>SIWHP</i>	<i>Lower</i>
RP-6	<i>SGFL</i>		<i>1960</i>			<i>870</i>	<i>SIWHP</i>	<i>A</i>

## Conditions of Field and Well upto February 2020



Well	company	well type	Discovery	production start	Drilled depth (ft)	Pressure	Pressure type	Completion Zone
RP-7	SGFL		1960			1308-1338	FWHP	Lower
RP-8	SGFL		1960			1600-1625	FWHP	Upper
<b>Field : Salda Nadi</b>								
Salda-1	BAPEX		1995					
Salda-2	BAPEX		1995					
Salda-3	BAPEX	Directional	1995	February, 2012		639-640, 698-700		Upper/Lower
Salda-4	BAPEX		1995					
<b>Field : Sangu</b>								
Sangu-1	BGFCL		1996					
Sangu-3z	BGFCL		1996					
Sangu-4	BGFCL		1996					
Sangu-5	BGFCL		1996					
Sangu-7	BGFCL		1996					
Sangu-8	BGFCL		1996					
Sangu-9	BGFCL		1996					
Sangu-10	BGFCL		1996					
Sangu-11	BGFCL		1996					
<b>Field : Semutang</b>								
Semutang-5	BAPEX		1967			280-508		Lower Zone
Semutang-6	BAPEX		1967			750-1302		
<b>Field : Shahbazpur</b>								
Shahbazpur-1	BAPEX		1995	May, 2009		2310-3543		Lower Zone
Shahbazpur-2	BAPEX		1995			3541-4133		Lower Zone
Shahbazpur-3	BAPEX		1995			4300		Upper Zone
Shahbazpur-4	BAPEX		1995			4250		Upper Zone
<b>Field : Srikail</b>								
Srikail-2	BAPEX		2012			990-1016		Upper & Lower D
Srikail-3	BAPEX		2012			981-1043		Upper & Lower D
Srikail-4	BAPEX		2012			1018-1068		Upper & Lower D
<b>Field : Sundalpur</b>								
Sundalpur -1	BAPEX		2011					
Sundalpur -2	BAPEX		2011					
<b>Field : Sylhet</b>								
Sylhet-3	SGFL		1955	Aug, 1958				
Sylhet-6	SGFL		1955	Aug, 1964		800-850	SIWHP	
Sylhet-7	SGFL		1955	Apr, 2005		1750-1820	FWHP	Lower Bokabil

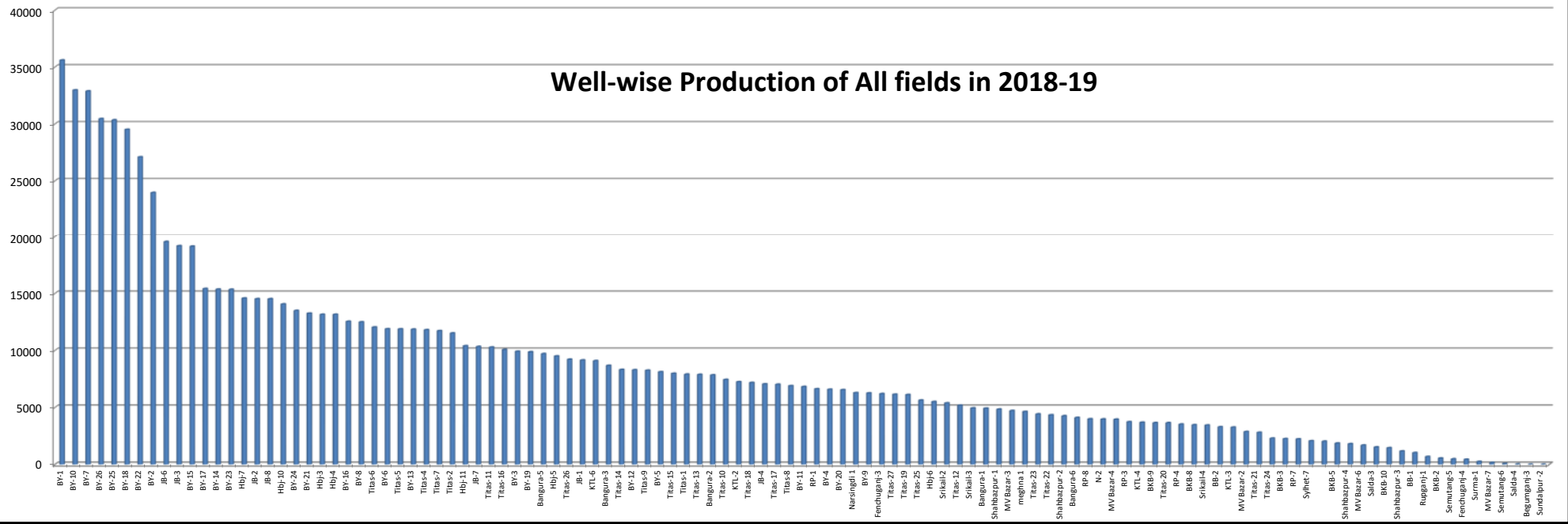


## Conditions of Field and Well upto February 2020

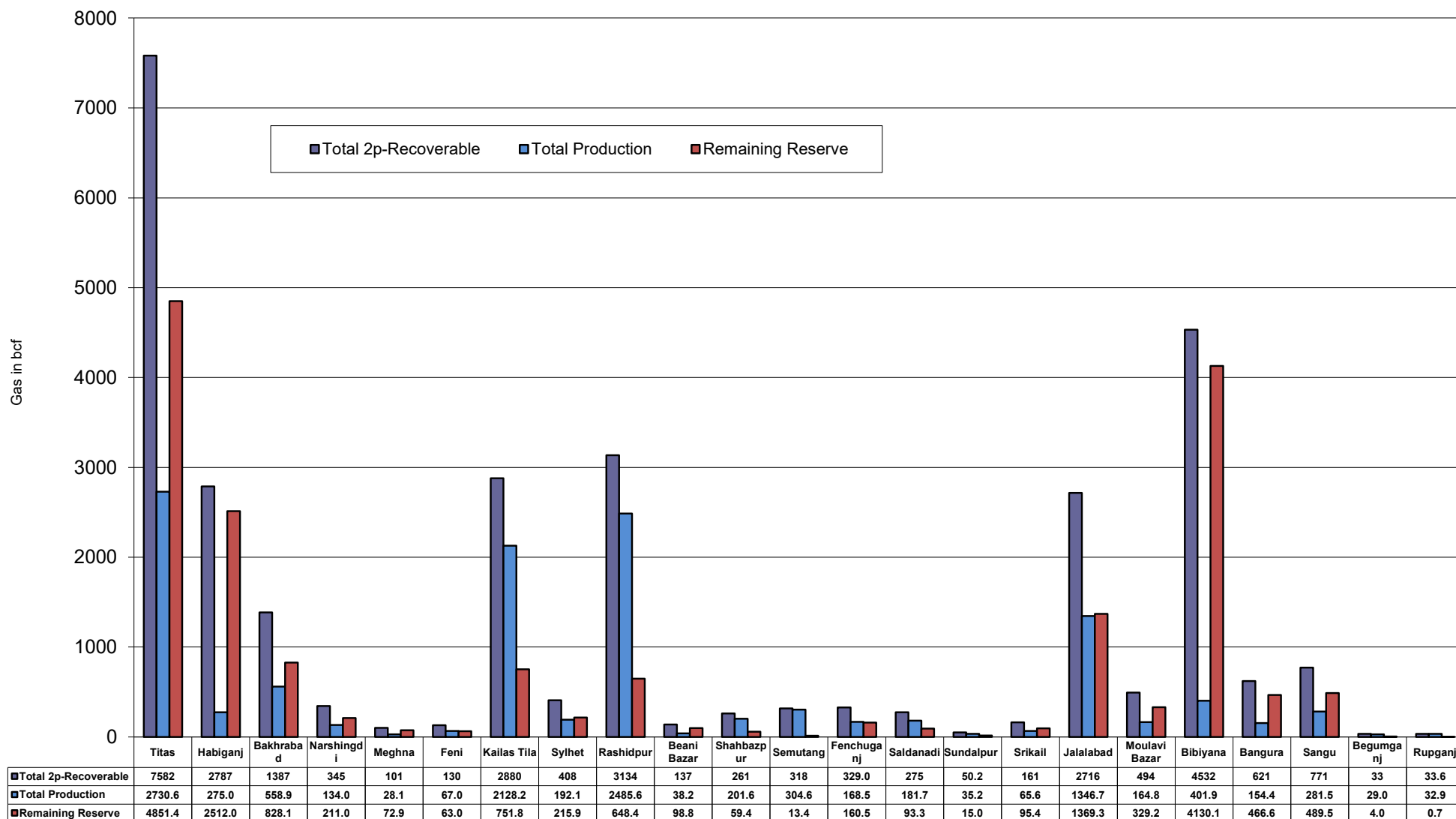


Well	company	well type	Discovery	production start	Drilled depth (ft)	Pressure	Pressure type	Completion Zone
Surma-1	SGFL		1955	June, 2010		230	SIWHP	C & D
<b>Field : Titas</b>								
Titas-1	BGFCL	vertical	1962	Mar,1969	12325	900-925	FWHP	A
Titas-2	BGFCL	vertical	1962	Fen,1969	10574	960-1020	FWHP	A
Titas-3	BGFCL	vertical	1962	sept,1969	9315	0	FWHP	A
Titas-4	BGFCL	vertical	1962	oct,1969	9350	1020-1070	FWHP	A
Titas-5	BGFCL	Directional	1962	jan,1981	10805	990-1035	FWHP	A
Titas-6	BGFCL	vertical	1962	Feb,1984	10072	1195-1225	FWHP	A
Titas-7	BGFCL	Directional	1962	July,1985	11006	1090-1160	FWHP	A
Titas-8	BGFCL	Directional	1962	sept,1985	11760	1000-1030	FWHP	B & C
Titas-9	BGFCL	Directional	1962	jan,1988	11893	1040-1085	FWHP	B & C
Titas-10	BGFCL	Directional	1962	may,1988	12139	1140-1180	FWHP	A
Titas-11	BGFCL	vertical	1962	Jun,1991	10462	1275-1310	FWHP	A
Titas-12	BGFCL	Directional	1962	July,2002	9873	1465-1500	FWHP	A
Titas-13	BGFCL	Directional	1962	June,2000	11487	1085-1115	FWHP	A
Titas-14	BGFCL	Directional	1962	June,2000	11004	1200-1250	FWHP	A
Titas-15	BGFCL	vertical	1962	may,2006	10446	0	FWHP	A
Titas-16	BGFCL	Directional	1962	dec,2005	11673	1205-1225	FWHP	A
Titas-17	BGFCL	vertical	1962	feb,2013	9424	1145-1175	FWHP	A
Titas-18	BGFCL	Directional	1962	august,2013	10932	1165-1190	FWHP	A
Titas-19	BGFCL	Directional	1962	may,2014	12730	1365-1415	FWHP	A
Titas-20	BGFCL	Directional	1962	oct,2013	11585	1370-1440	FWHP	A
Titas-21	BGFCL	Directional	1962	dec,2013	11631	1260-1285	FWHP	A
Titas-22	BGFCL	Directional	1962	march,2014	11926	990-1025	FWHP	A
Titas-27	BGFCL	Directional	1962	april,2014	10292	1245-1265	FWHP	A
Titas-23	BGFCL	Directional	1962	feb,2017	11988	2265-2340	FWHP	C
Titas-24	BGFCL	Directional	1962	oct,2016	12686	1120-1245	FWHP	C
Titas-25	BGFCL	vertical	1962	march,2016	11680	1300-1340	FWHP	A
Titas-26	BGFCL	Directional	1962	july,2016	12618	1840-1875	FWHP	C
<b>Field : Begumganj</b>								
Begumganj-3	BAPEX		1977					
<b>Field : Rupganj</b>								
Rupganj-1	BAPEX		2014			38-88		

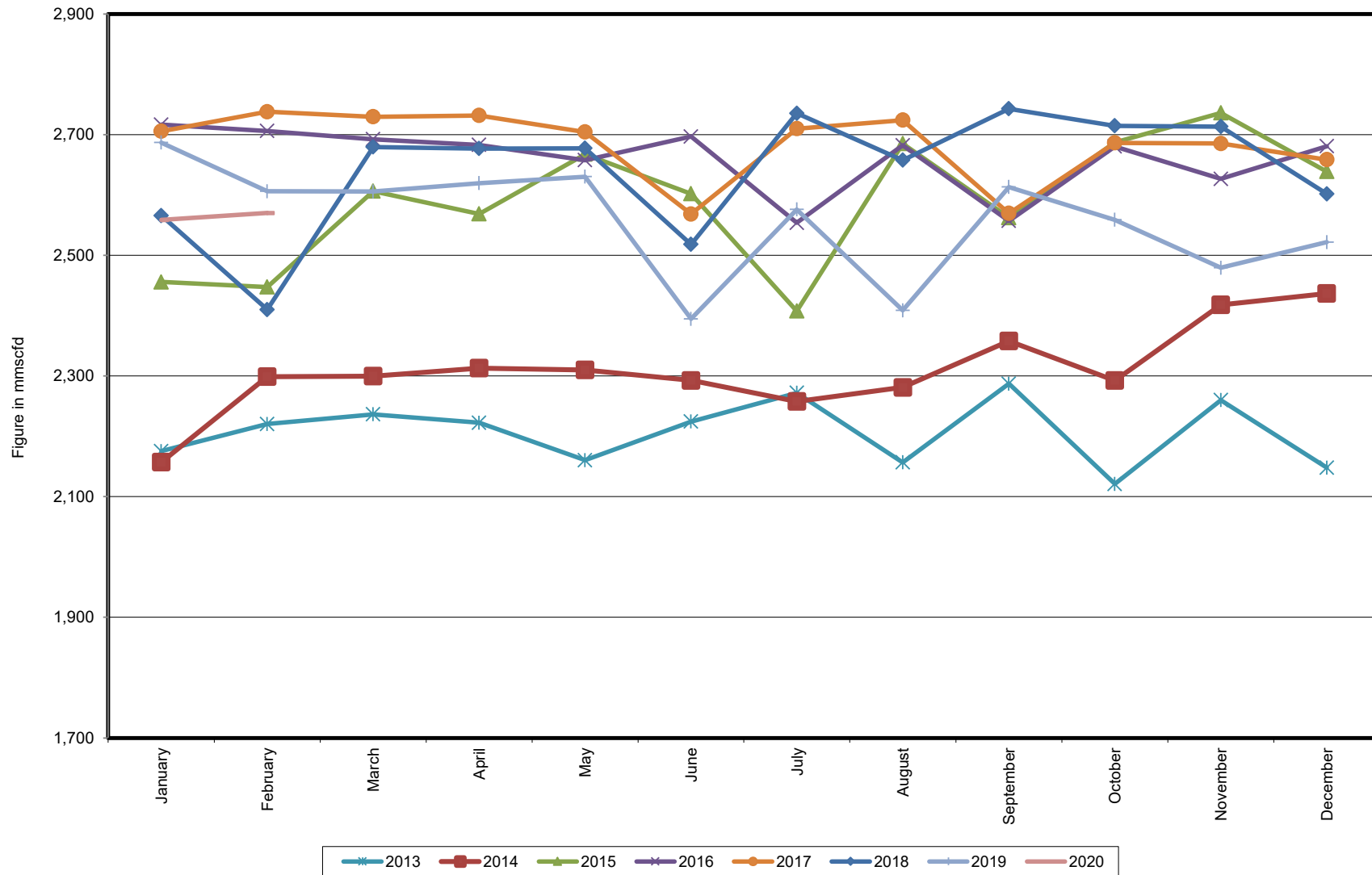
### Well-wise Production of All fields in 2018-19



## Reserve, Production and Remaining Reserve as of February 2020



## Daily Avg. Production From January 2013 to February 2020



## Field Wise Daily Avg. Production February 2020

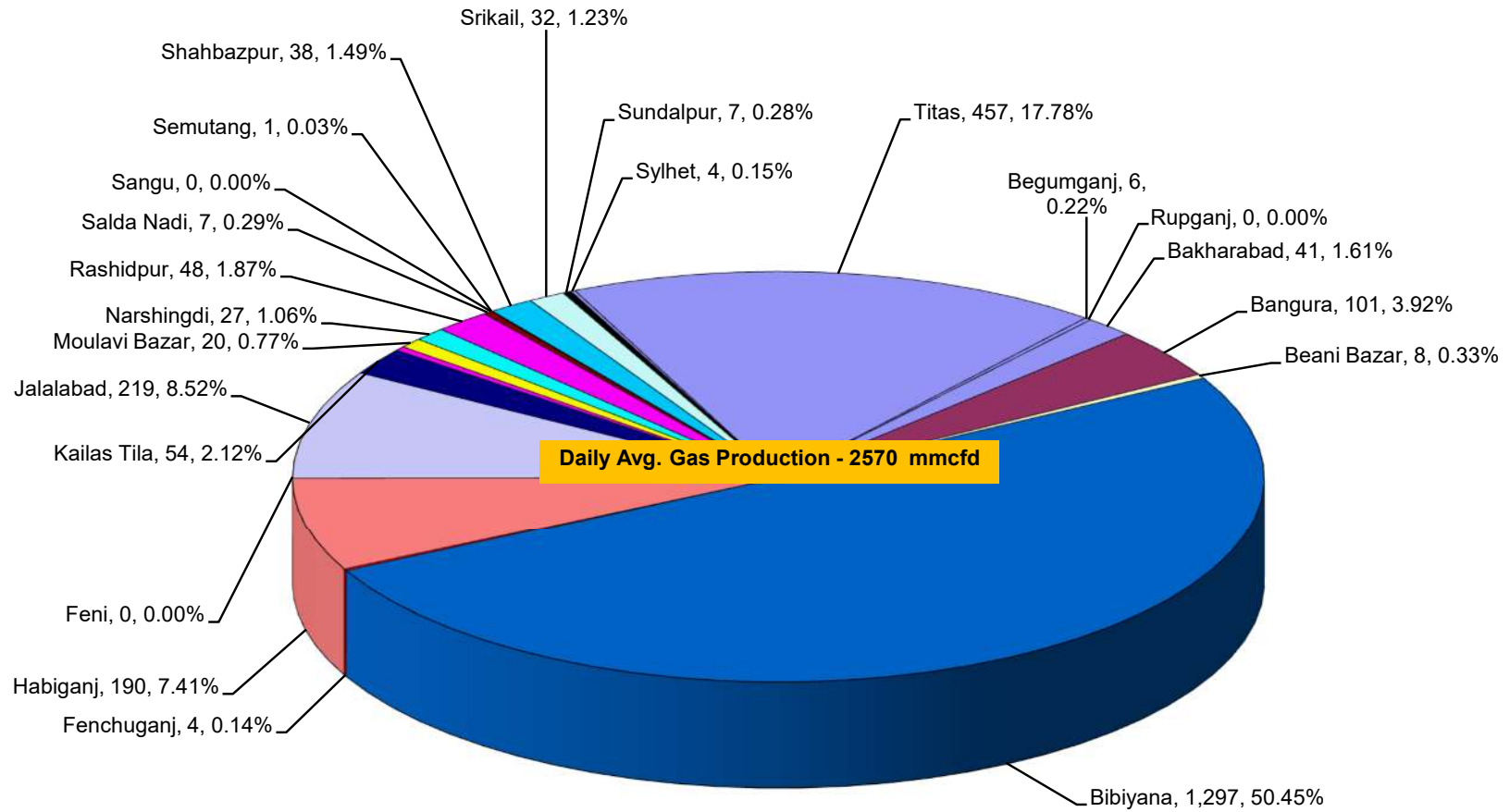
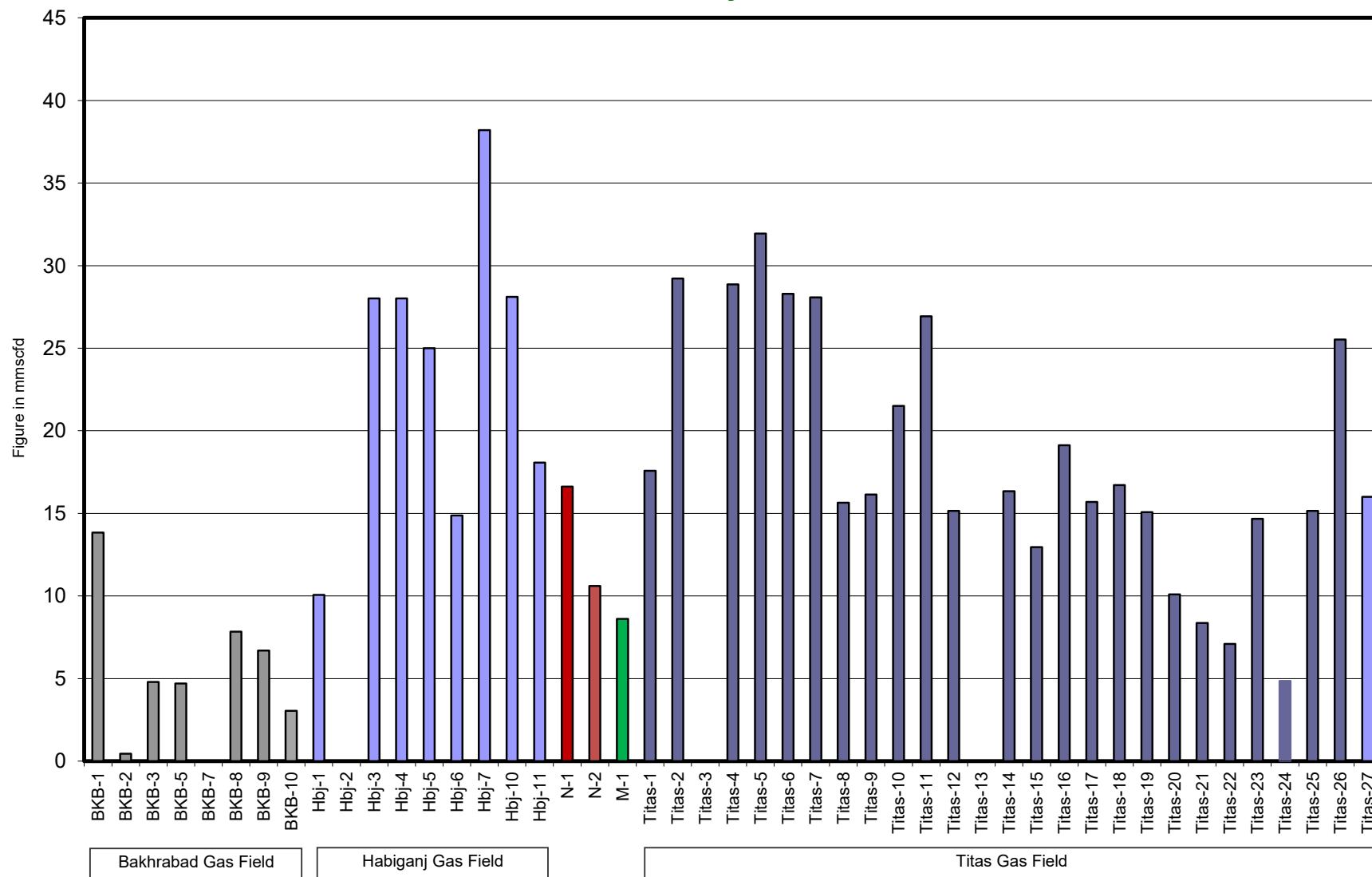


Figure in mmcf and % of total production

## Wellwise Daily Avg. Production- BGFCL February 2020



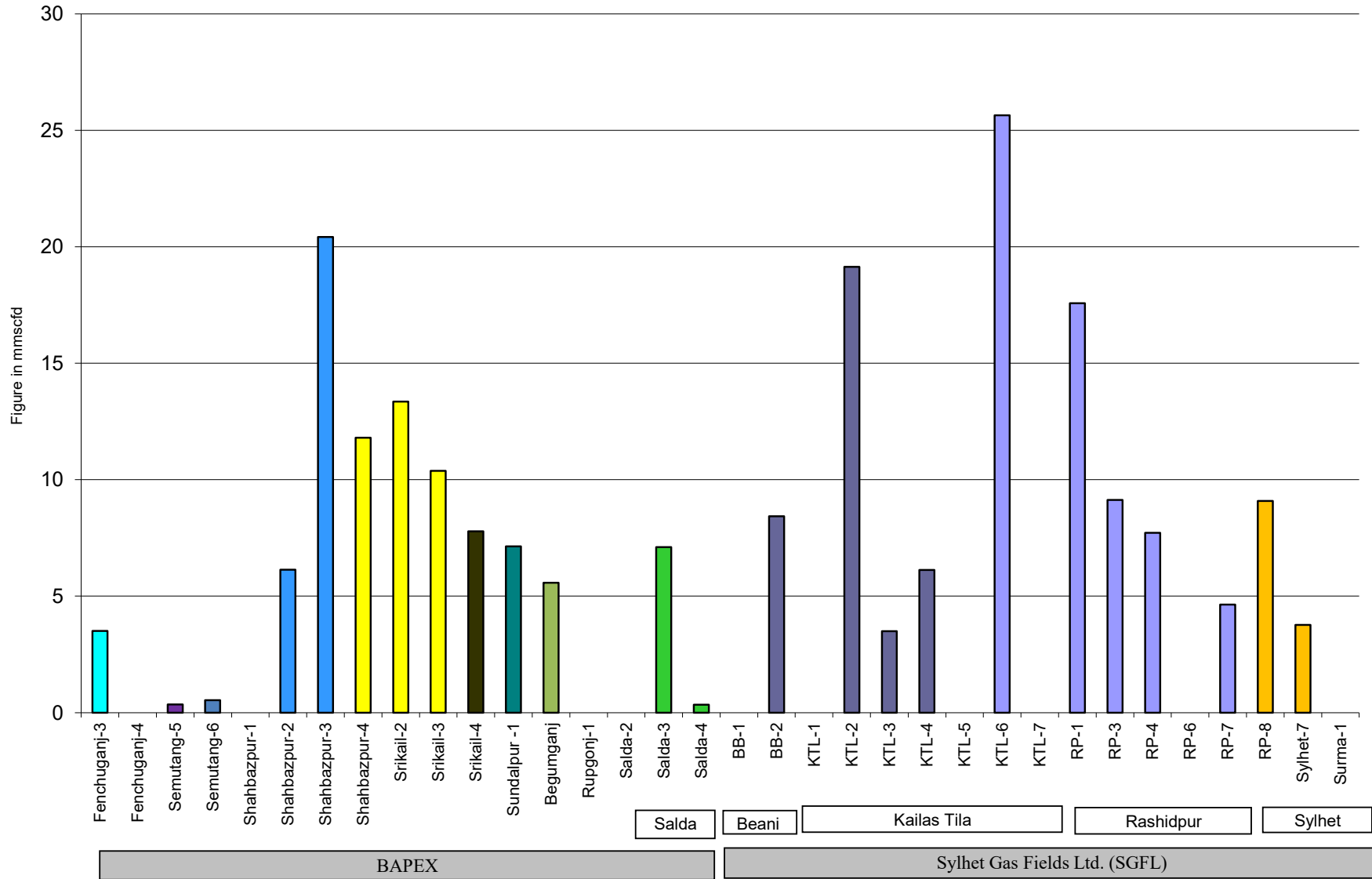
Bakhrabad Gas Field

Habiganj Gas Field

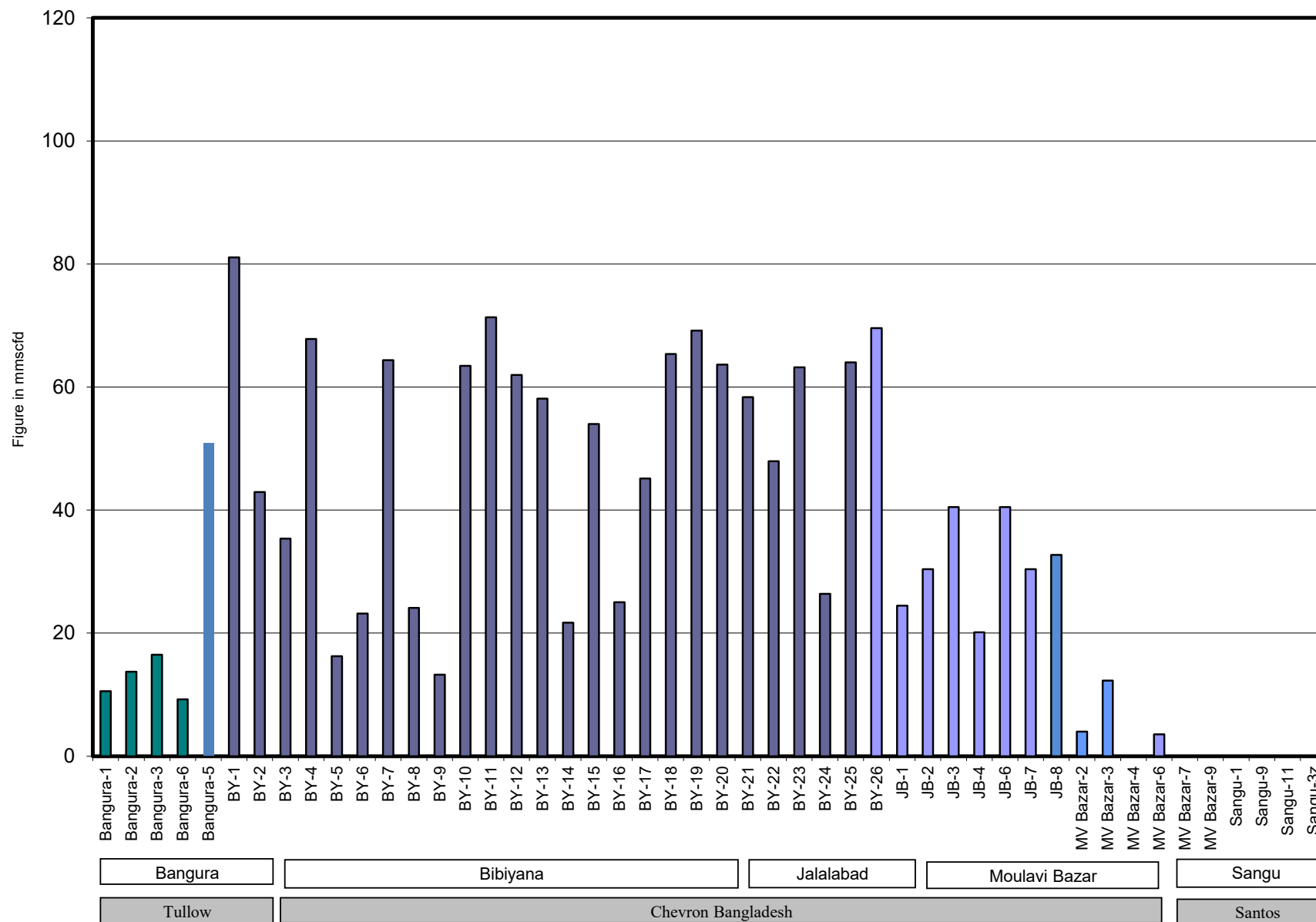
Titas Gas Field

Bangladesh Gas Fields Co. Ltd. (BGFCL)

# Wellwise Daily Avg. Production- Bapex and SGFL February 2020

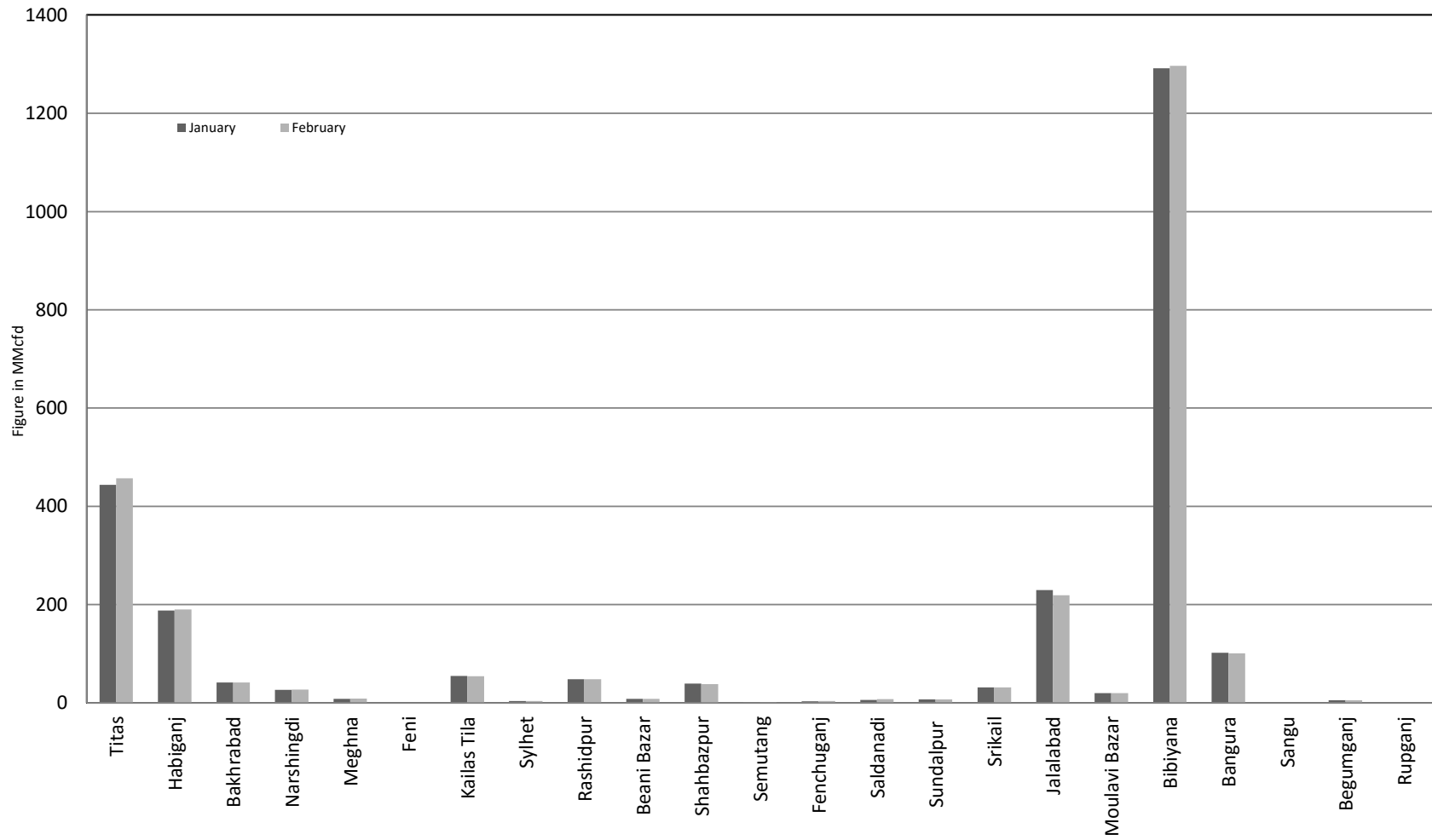


## Wellwise Daily Avg. Production- IOC and JVA February 2020

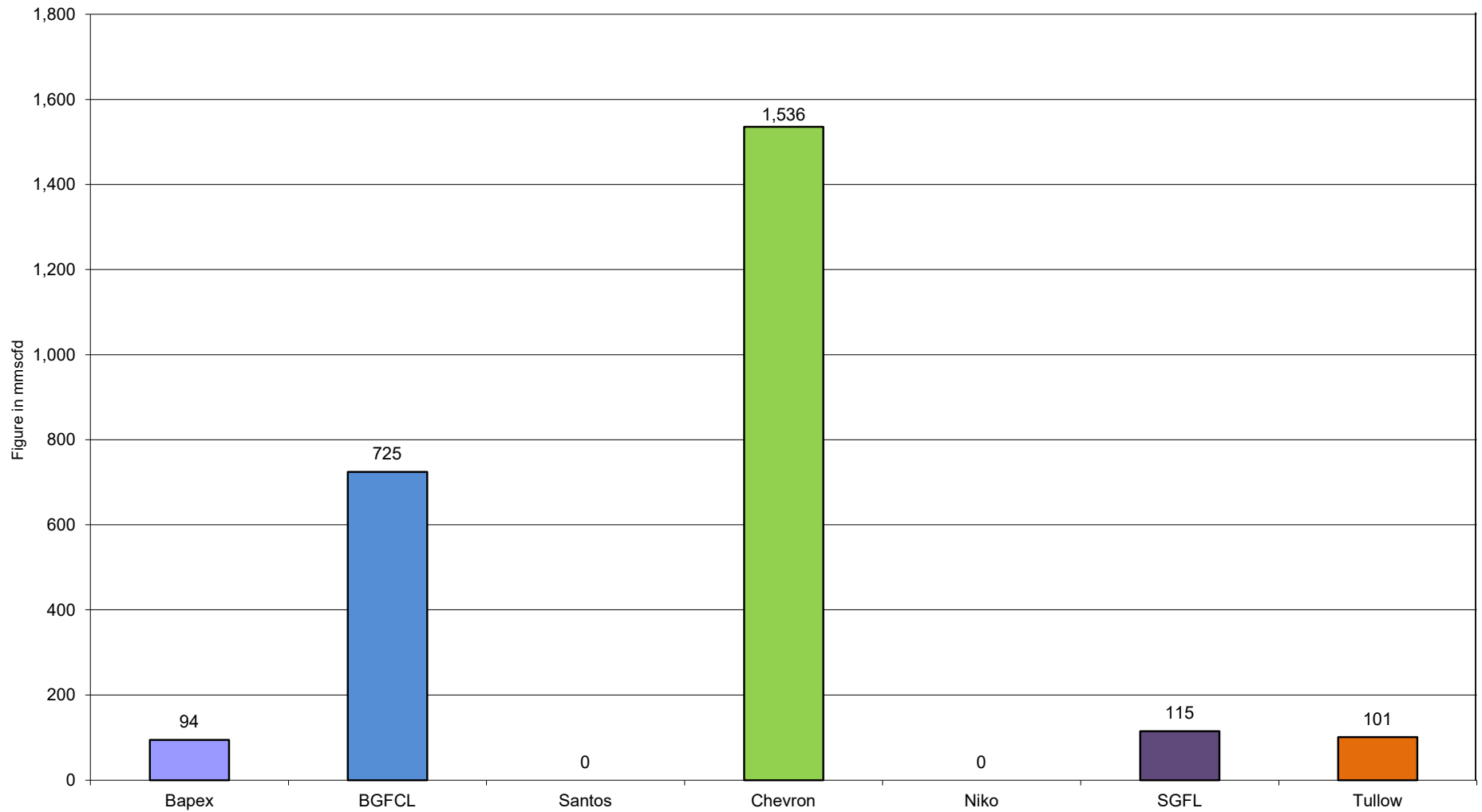




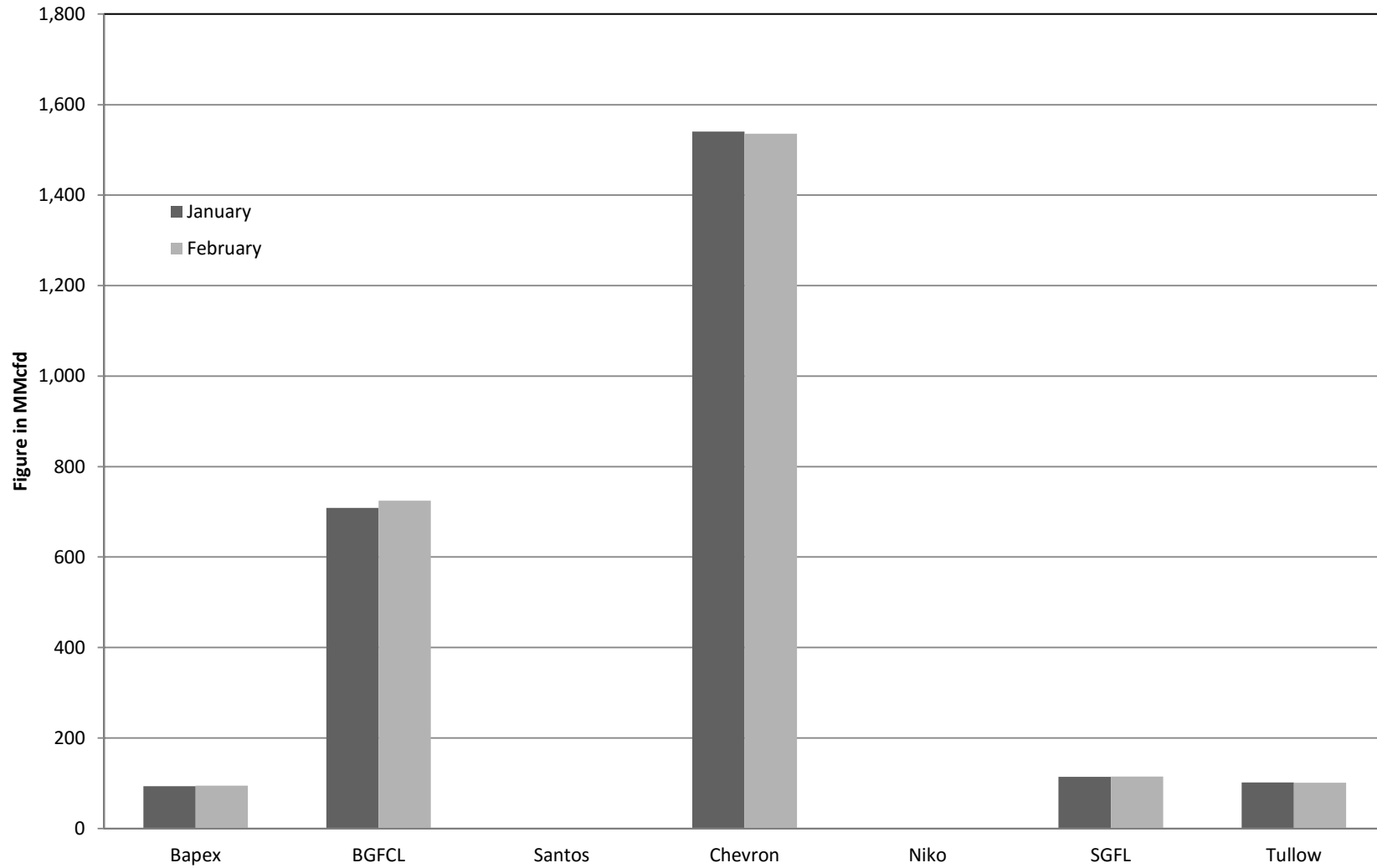
### Comparison of fieldwise daily avg. Gas production between January 2020 & February 2020



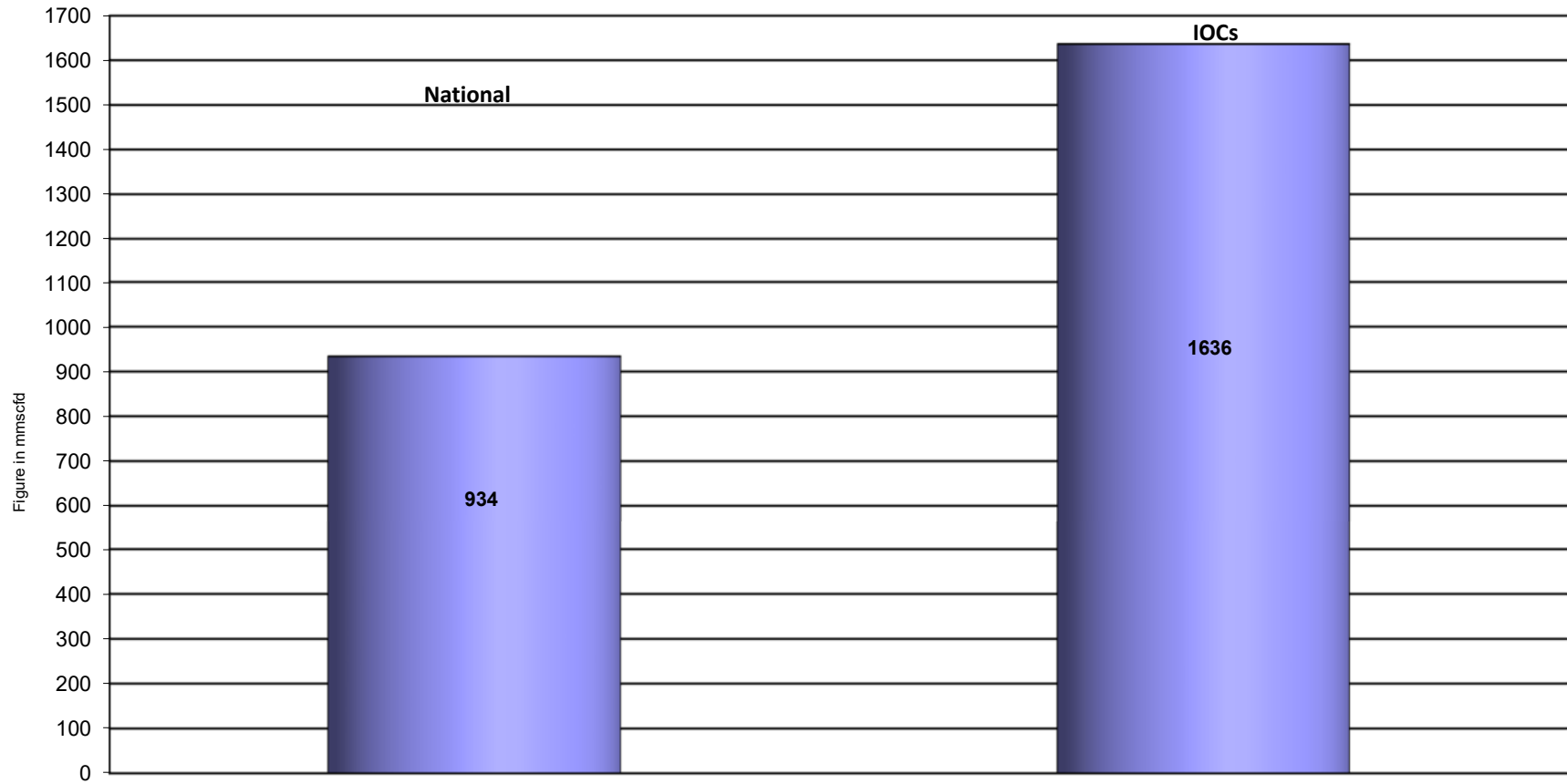
## Daily Avg. Production by Operators February 2020



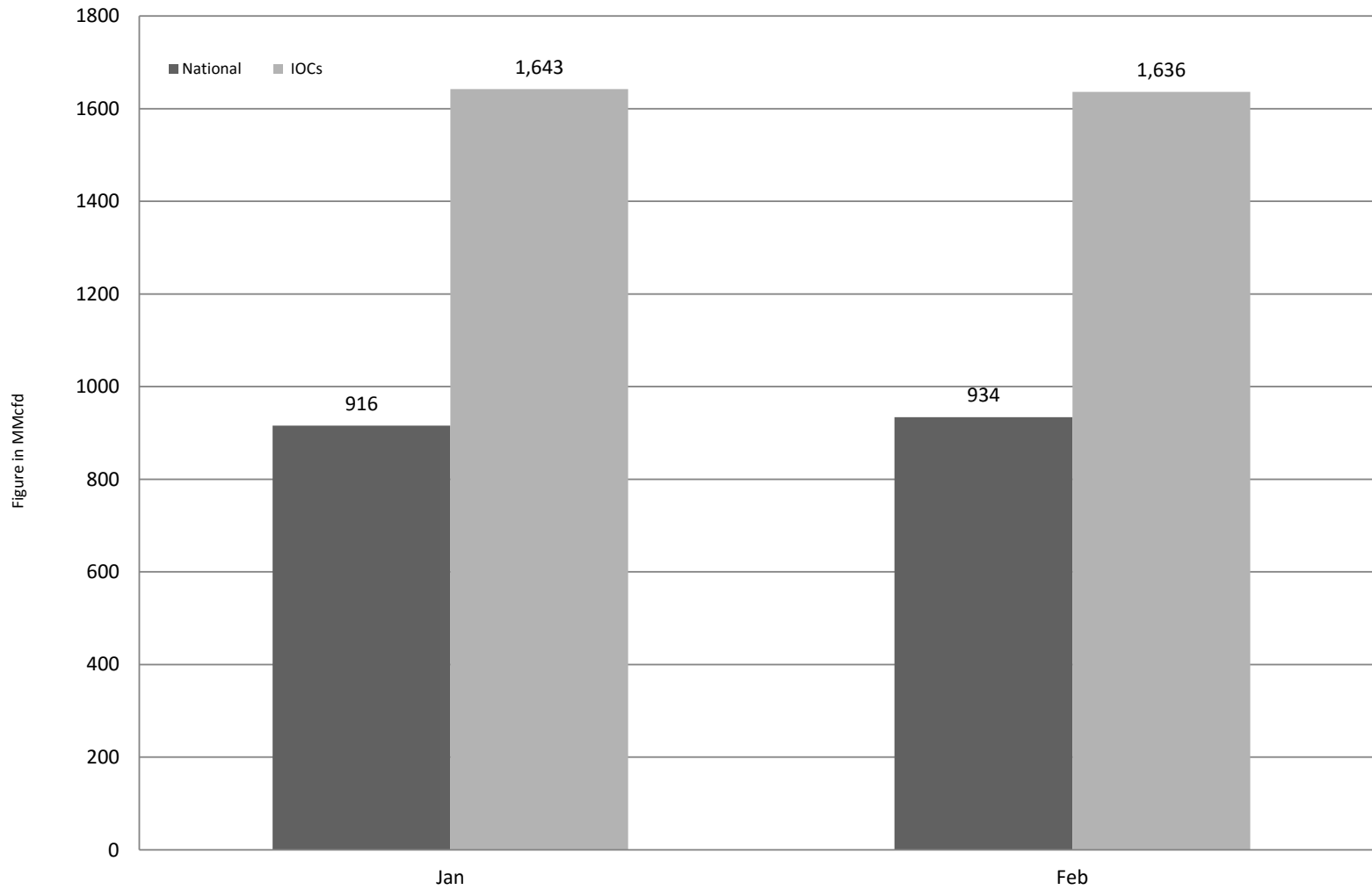
### Comparison of operatorwise daily avg. Gas production between January 2020 & February 2020



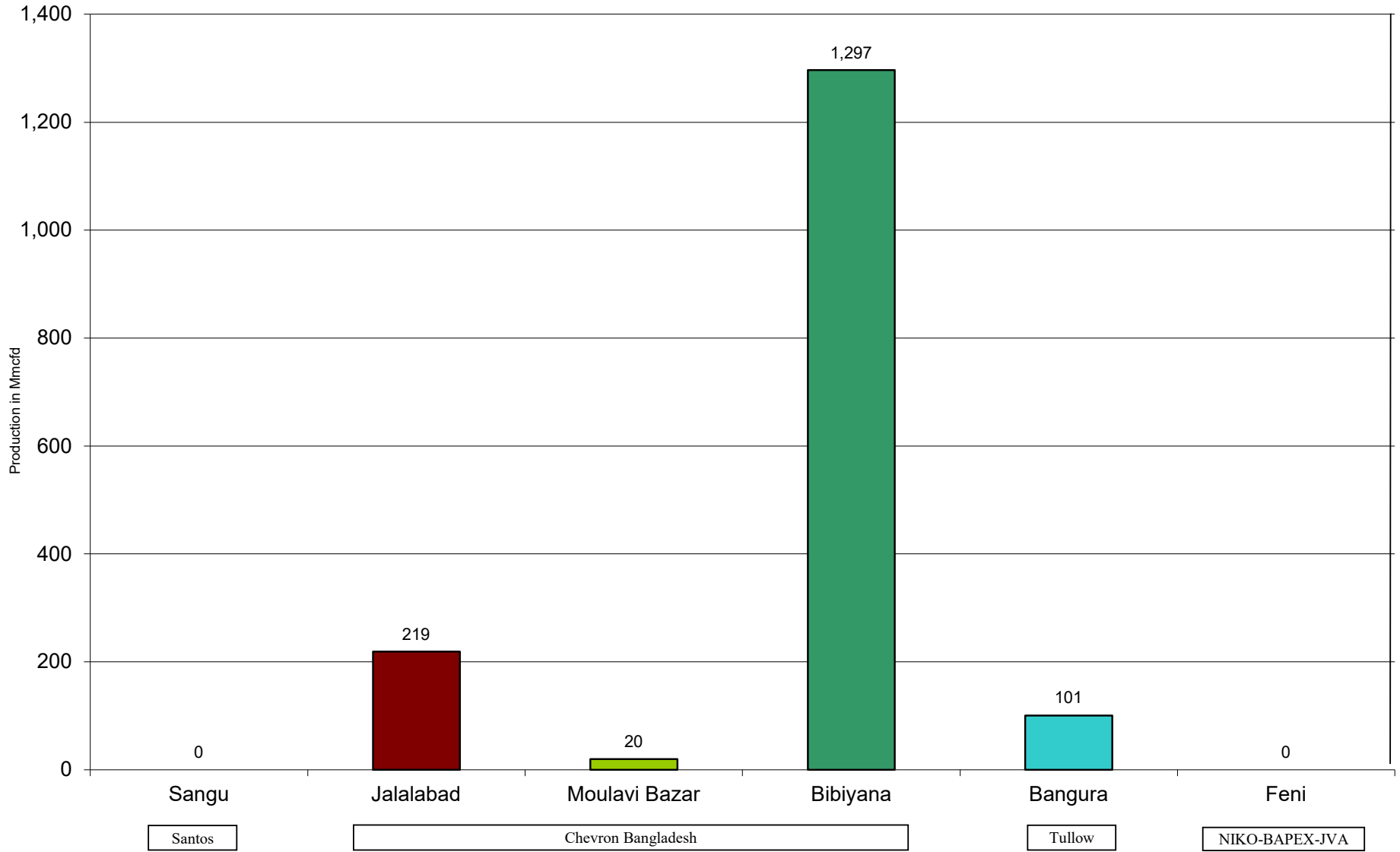
## Daily Avg. Production - National Vs. IOCs February 2020



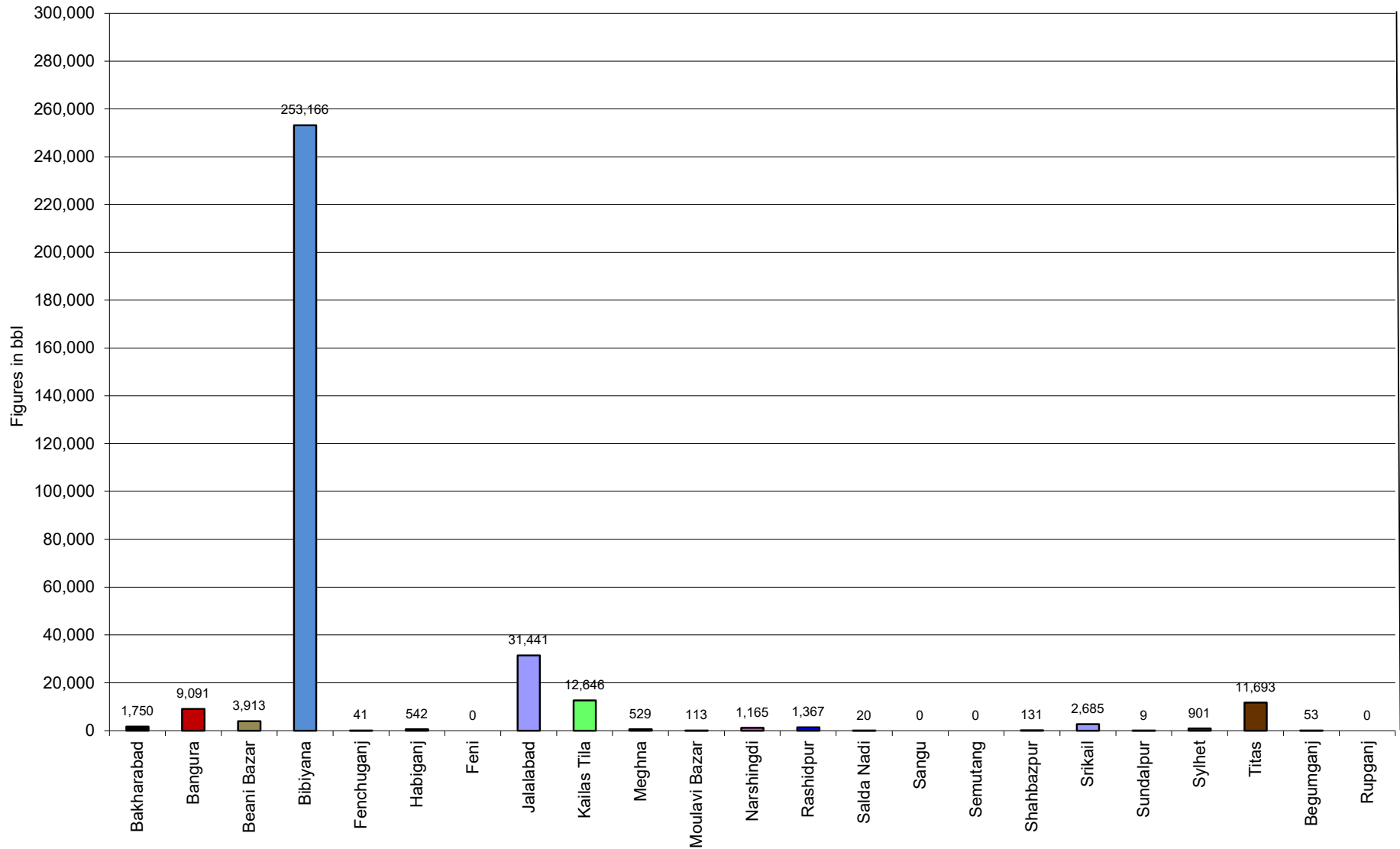
### Comparison of daily avg. Gas production - National vs IOC's between January 2020 & February 2020



## Daily Avg. Production - IOC and JVA February 2020



## Monthly Condensate Production February 2020



## Field wise Coal Reserve in Bangladesh

SI No.	Coal Basins	Proved (Mt)	Indicated (Mt)	Inferred (Mt)	Total (Mt)
1	Barapukuria	114.32	211.33	21.06+(43-64)*	346.71+(43-64)*
2	Phulbari	288	226	58	572
3	Khalashpir	-	297.57	225.92	523.49
4	Jamalganj	-	-	1053.9	1053.9
5	Dighipara	-	105	495	600
	<b>Total</b>	<b>402.32</b>	<b>839.9</b>	<b>1896.88-1917.88</b>	<b>3139.10-3160.10</b>

*\*Resources of VI Seam in second syncline are towards SW of main basin, after Wardell Armstrong*

*NOTE: Reserve Figure based on Coal Sector Development Strategy (Final), HCU, PwC*



## Summary of Reserve and Production of Barapukuria Coal Mine As of 29 February 2020

<b>Coal Initially Place (Proven + Probable)</b>	<b>346,710 kT</b>	<b>346.71 MT</b>
<b>Total Reserve of Seam VI</b>	<b>285,410 kT</b>	<b>285.41 MT</b>
<b>Recoverable from Seam VI Central part(Proven + Probable)</b>	<b>16,540 kT*</b>	<b>16.54 MT</b>
<b>Coal Production in February 2020</b>	<b>111.96 kT</b>	<b>0.11 MT</b>
<b>Cumulative Production as of February 2020</b>	<b>11,363 kT</b>	<b>11.36 MT</b>
<b>Remaining Reserve</b>	<b>5,177 kT</b>	<b>5.18 MT</b>

*NOTE: Reserve figure based on Mines and Minerals Development Report ,HCU PwC*

\*Figure from BCMCL, M/S Wardell Armstrong. According to Mines and Minerals Development Report ,HCU, PwC this figure is 64.8 Mt

## Barapukuria Coal Mine-MPM and P Contract (BCMCL)

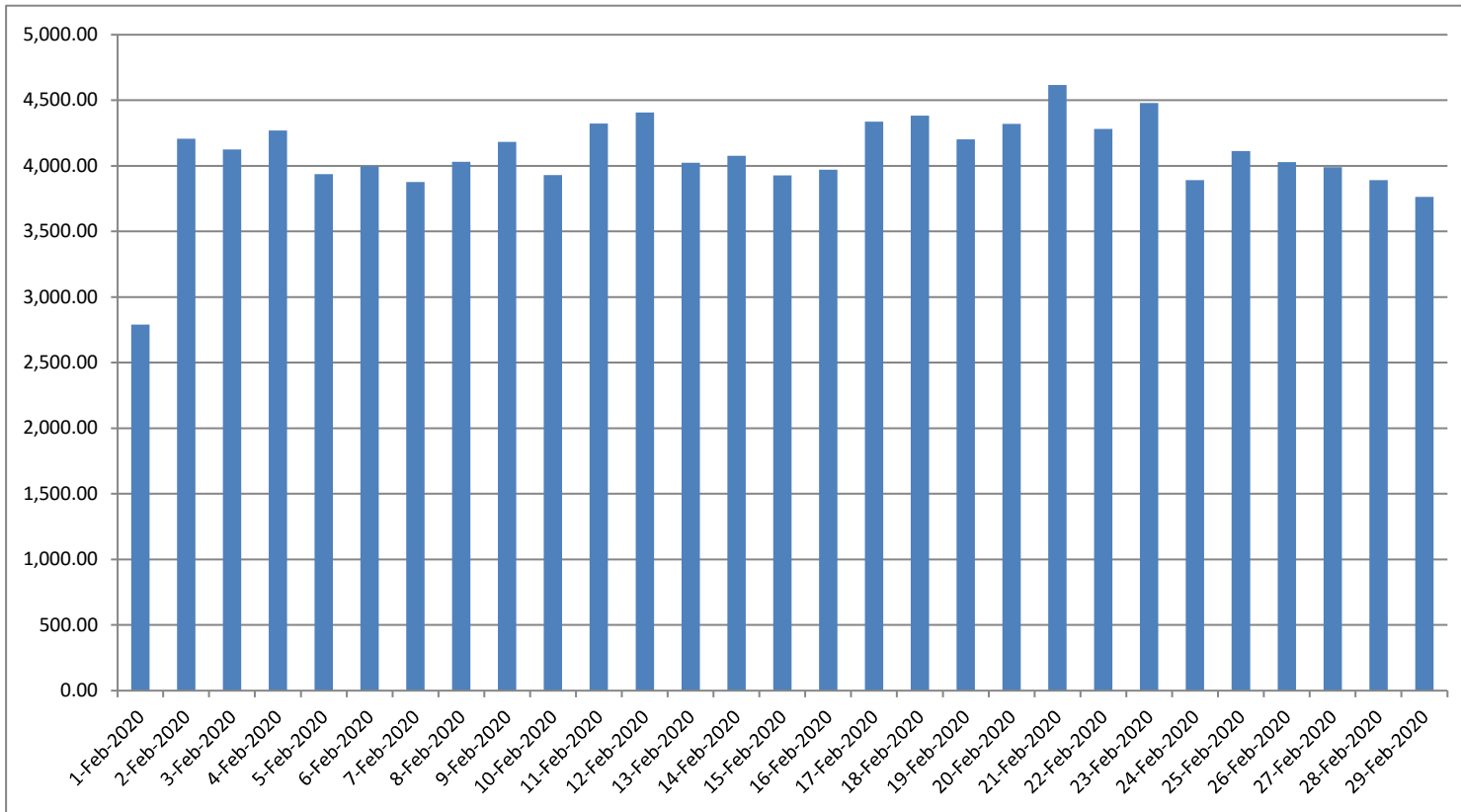
### Measurement Record: Surface Belt Weigher

Measurement Period: February 2020

Day wise data	Consortium Daily Output (ton)	Consortium Cumulative Total	BCMCL Daily Output	BCMCL Cumulative Total	Remarks
1-Feb-2020	2,789.94	2,789.94	2,789.94	2,789.94	
2-Feb-2020	4,207.66	6,997.60	4,207.66	6,997.60	
3-Feb-2020	4,124.98	11,122.58	4,124.98	11,122.58	
4-Feb-2020	4,270.10	15,392.68	4,270.10	15,392.68	
5-Feb-2020	3,936.81	19,329.49	3,936.81	19,329.49	
6-Feb-2020	3,997.59	23,327.08	3,997.59	23,327.08	
7-Feb-2020	3,876.04	27,203.12	3,876.04	27,203.12	
8-Feb-2020	4,029.76	31,232.88	4,029.76	31,232.88	
9-Feb-2020	4,183.22	35,416.10	4,183.22	35,416.10	
10-Feb-2020	3,929.88	39,345.98	3,929.88	39,345.98	
11-Feb-2020	4,322.51	43,668.49	4,322.51	43,668.49	
12-Feb-2020	4,406.87	48,075.36	4,406.87	48,075.36	
13-Feb-2020	4,023.38	52,098.74	4,023.38	52,098.74	
14-Feb-2020	4,075.91	56,174.65	4,075.91	56,174.65	
15-Feb-2020	3,927.91	60,102.56	3,927.91	60,102.56	
16-Feb-2020	3,969.31	64,071.87	3,969.31	64,071.87	
17-Feb-2020	4,335.81	68,407.68	4,335.81	68,407.68	
18-Feb-2020	4,383.38	72,791.06	4,383.38	72,791.06	
19-Feb-2020	4,201.44	76,992.50	4,201.44	76,992.50	
20-Feb-2020	4,320.20	81,312.70	4,320.20	81,312.70	
21-Feb-2020	4,616.46	85,929.16	4,616.46	85,929.16	
22-Feb-2020	4,282.03	90,211.19	4,282.03	90,211.19	
23-Feb-2020	4,478.38	94,689.57	4,478.38	94,689.57	
24-Feb-2020	3,891.07	98,580.64	3,891.07	98,580.64	
25-Feb-2020	4,113.41	102,694.05	4,113.41	102,694.05	
26-Feb-2020	4,029.21	106,723.26	4,029.21	106,723.26	
27-Feb-2020	3,988.91	110,712.17	3,988.91	110,712.17	
28-Feb-2020	3,889.91	114,602.08	3,889.91	114,602.08	
29-Feb-2020	3,764.25	118,366.33	3,764.25	118,366.33	

less Difference in Water Content:	6409.54
Less Out of Seam dilution:	0
Coal adjustment for scale recalibration	0
<b>Output (tons) measured by Belt Weigher:</b>	<b>111,956.79</b>
Tonnes mined in DARR	0
Net Output after removing DARR	111,956.79

## Barapukuria Coal Mine Daywise Data Graph for February 2020



আসুন, যানবাহনসমূহকে অটোগ্যাসে রূপান্তর করি...

জাতীয় সম্পদ প্রাকৃতিক গ্যাস সাশ্রয় করি...

facebook

"Energy misused, cannot be excused"

আমাদের ঘরে যদি এখনো কয়েল স্টার্টার যুক্ত টিউবলাইট থেকে থাকে, আসুন আজই LED টিউবলাইট দ্বারা প্রতিস্থাপন করি।

HYDROCARBON UNIT ON FACEBOOK

“আসুন আমাদের জাতীয় সম্পদ প্রাকৃতিক গ্যাস সাশ্রয় করি”

১। **LPG** ব্যবহার করুন..

অবৈধ গ্যাস সংযোগ থেকে বিরত থাকুন

২। **CNG** নয়, অকটেন দিয়ে গাড়ি চালান...

গাড়ির ইঞ্জিনের আয়ুষ্কাল বাড়ান

চলুন আজই যানবাহনসমূহ AUTO GAS (LPG) এ রূপান্তর করি...

- \* CNG এর তুলনায় LPG কনভারশনে ৫০% কম খরচ হয়
- \* ৩-৫ মিনিটে ট্যাংকে ফুয়েল ভর্তি হয়, লম্বা লাইনে দাঁড়িয়ে অপেক্ষা করার প্রয়োজন পরে না
- \* CNG এর তুলনায় সিলিন্ডারে জায়গা, ওজন ও প্রেশার কম দরকার
- \* রক্ষণাবেক্ষণের খরচ কম
- \* পেট্রলের তুলনায় AUTO GAS -এ খরচ প্রায় ৫০% কম
- \* গ্যাসোলিন ও ডিজেলের তুলনায় নিঃসরণ কম

# Hydrocarbon Unit

Energy & Mineral Resources Division  
Ministry of Power, Energy & Mineral Resources  
153, Pioneer Road  
Segunbagicha, Dhaka-1000  
www.hcuro.gov.bd