



Gas and Coal Reserve & Production

July 2023



ENERGY DATA CENTER



HYDROCARBON UNIT

Energy and Mineral Resources Division

Preface

Monthly Report on Gas and Coal Reserve & Production was prepared and published by Hydrocarbon Unit for the first time in July 2004. The present one is the issue for July 2023. In this report, Monthly Gas, Condensate, Water and Coal production of Bangladesh is reflected. Monthly import of Liquefied Natural Gas (LNG) has been included in the report as well. Moreover, Daily Average Gas Production; Field wise Daily Average Production; Well wise Daily Average Production; Comparison of Field wise Average Gas Production between present & previous month; Daily Average Production by Operator; Comparison of National and IOC Daily Average Production along with the graphical presentation have been depicted. Monthly Coal production data is also included in this report.

This report has been prepared based on the data directly collected from the Production companies of Petrobangla (BAPEX, BGFCL & SGFL) and IOC companies (Tullow & Chevron). Liquefied Natural Gas (LNG) import data is collected from RPGCL & Coal production data is collected from BCMCL.

It is expected that the report will be helpful as reference book and elements of interest for the concerned.

The report will also be available at HCU's website: www.hcu.gov.bd.

Md. Shameem Khan
Director General (Joint Secretary)
Hydrocarbon Unit

Executive Summary of July 2023

Total gas and condensate Production in July 2023 were 65.12 Bcf and 244578.86 Bbl. During the previous month i.e. June 2022, gas and condensate production were 62.34 Bcf and 243719.49 Bbl and in the same month of the previous year i.e. July 2022, total gas and condensate production were 69.66 Bcf and 198140 Bbl respectively. The National Oil Companies (NOC's) and International Oil Companies (IOC's) Produced 25.12 Bcf and 39.99 Bcf gas respectively in July 2023. During the previous month i.e. June 2023, gas production by the National Oil Companies (NOC's) and International Oil Companies (IOC's) were 23.97 Bcf and 38.37 Bcf respectively. In the month of July 2023, Bibiyana gas field Produced 32.96 Bcf gas and it ranked top among the gas producers. Average production from the field during the month of July 2023 was 1063 MMcf. It is noted that Bibiyana gas field Produced 31.41 Bcf in June 2023.

During the month of July 2023 total production of condensate was 244578.86 Bbl compared to 243719.49 Bbl in the previous month i.e. June 2023. Bibiyana gas field Produced 179052 Bbl condensate and ranked top while Jalalabad ranked 2nd by producing 24606 Bbl.

Total LNG import in July 2023 was 23.90 Bcf. As a result, Total LNG Import in this FY is 23.90 Bcf and cumulative LNG import stands on 1002.74 Bcf from August 2018.

In the month of July 2023, total coal production was 102438.57 Ton. During the previous month, i.e. June 2023 total coal production was 115880.37 Ton.

Gas Reserve & Production at a glance

Gas Initially in Place (GIIP)	:	40,092.19 Bcf
Recoverable (2P)	:	29,926.50 Bcf
Cumulative Production as of July 2023	:	20,418.53 Bcf
Remaining Reserve up to July 2023	:	9,507.97 Bcf
Gas Production in July 2023	:	65.12 Bcf
National Oil Company (NOC's) production in July 2023	:	25.12 Bcf
International Oil Company (IOC's) production in July 2023	:	39.99 Bcf
No. of National Oil Company (NOC's) in July 2023	:	3 (BGFCL, BAPEX, SGFL)
No. of International Oil Company (IOC's) in July 2023	:	2 (Chevron, Tullow)
Total gas fields of National Oil Company (NOC) in July 2023	:	21
Total gas fields of International Oil Company (IOC) in July 2023	:	5
Total gas wells of National Oil Company (NOC) in July 2023	:	115
Total gas wells of International Oil Company (IOC) in July 2023	:	60
No. of National Oil Company (NOC's) gas production well in July 2023	:	70
No. of Intl. Oil Company (IOC's) gas production well in July 2023	:	42
No. of National Oil company (NOC's) suspended well in July 2023	:	45
No. of International Oil company (IOC's) suspended well in July 2023	:	18
Total LNG Import in July 2023	:	23.90 Bcf
Total LNG Import from July 2023	:	23.90 Bcf
Cumulative LNG Import from August 2018	:	1,002.74 Bcf

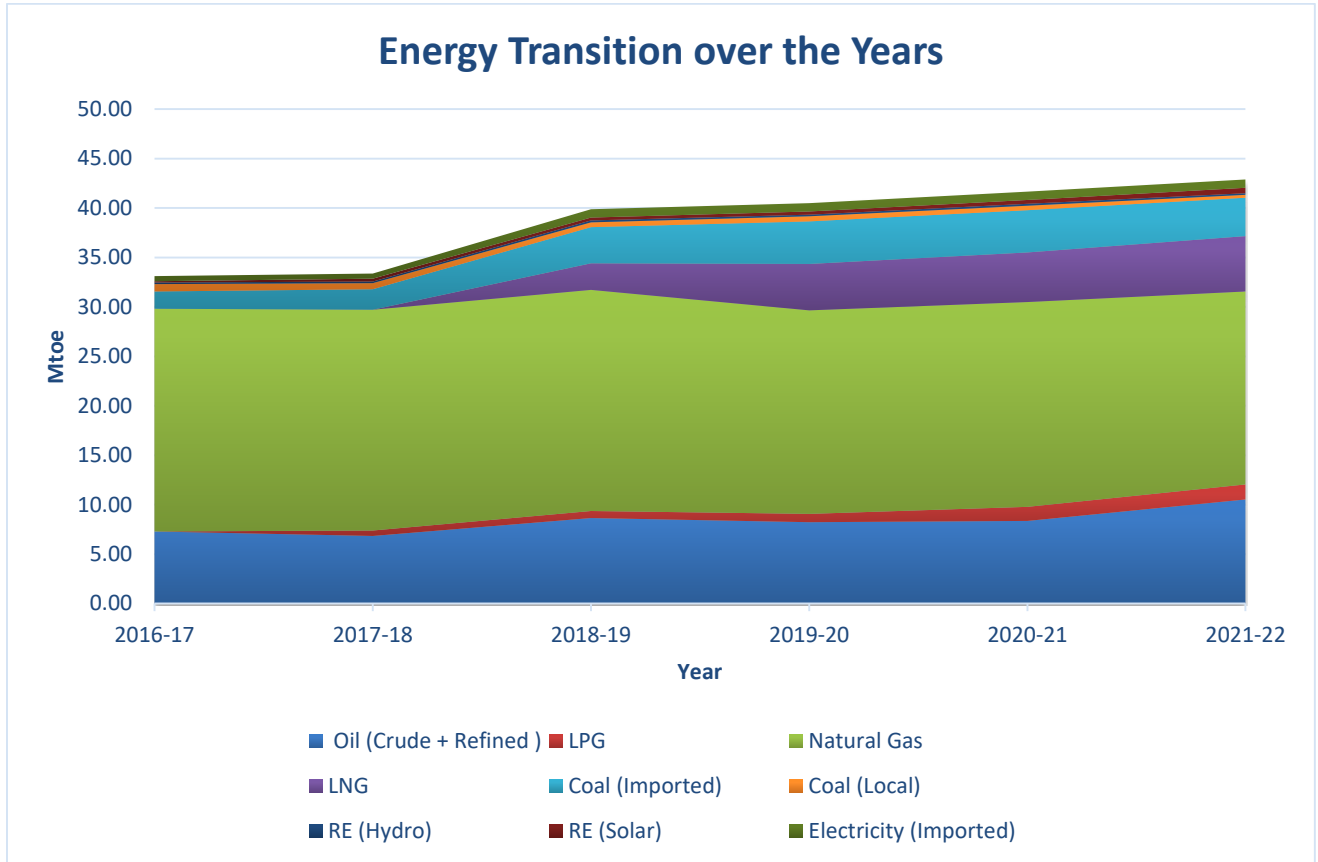


Table of Contents

Gas Report	Page No.
Summary	1
summary of Reserve and Production	2
Production comparison between June 2023 & July 2023	3
Production per well & production, reserve ratio	4
Monthly Production by Fields & Wells up to July 2023	5-12
Monthly Condensate Production by Fields up to July 2023	13-14
Monthly Water Production by Fields from July 2023	15-16
Conditions of Field and Well up to July 2023	17-21
Chart	
Well-wise Production of All fields in 2022-23	22
Reserve, Production and Remaining Reserve as of July 2023	23
Daily Average Gas Production from January 2017 to July 2023	24
Field wise Daily Average Production as of July 2023	25
Well wise Daily Average Production-BGFCL as of July 2023	26
Well wise Daily Average Production-BAPEX and SGFL, July 2023	27
Well wise Daily Average Production-IOC and JVA, July 2023	28
Field wise Avg Gas Production between June 2023 & July 2023	29
Daily Average Production by Operator, July 2023	30
Operator wise daily Avg Production between June 2023 & July 2023	31
Daily Average Production – National vs IOC's, July 2023	32
Daily Avg Gas Production- National vs IOC's between June 2023 & July 2023	33
Daily Average Production IOC's and JVA, July 2023	34
Monthly Condensate Production, July 2023	35
Coal Report	
Summary	36-37
Barapukuria Coal Mine-MPM and P Contract (BCMCL)	38
Barapukuria Coal Mine Day wise Data Graph for July 2023	39

Summary of Reserve, Production & Import As of July 2023

Gas Initially Place (Proven + Probable)	40,092.19 Bcf	40.09 Tcf
Recoverable (Proven + Probable)	29,926.50 Bcf	29.93 Tcf
Gas Production in July 2023	65.12 Bcf	0.07 Tcf
Cumulative Gas Production as of July 2023	20,418.53 Bcf	20.42 Tcf
Remaining Reserve	9,507.97 Bcf	9.51 Tcf

NOTE: Reserve figure based on "Updated Report on Bangladesh Gas Reserve Estimation 2010", prepared by Gustavson Associates LLC, USA

Total LNG Import in July 2023	23.90 Bcf	0.02 Tcf
Total LNG Import in this FY	23.90 Bcf	0.02 Tcf
Cumulative LNG Import from August 2018	1,002.74 Bcf	1.00 Tcf

Summary of Reserve and Production

(As of July 2023)



Gas Bcf

Sl No.	Field	2P GIIP	2P Reserve	Gas Prod. In July'23	Cum. Gas Production	Remaining Reserve	Cum. Condensate Production
1	Begumganj	47.0	33.0	0.25	13.0	20.0	4
2	Shahbazpur	415.0	261.0	2.41	146.6	114.4	17
3	Semutang	654.0	318.0	0.02	14.3	303.7	5
4	Fenchuganj	483.0	329.0	0.38	173.5	155.5	122
5	Salda Nadi	393.0	275.0	0.11	97.9	177.1	60
6	Srikail*	230.0	161.0	0.97	140.5	20.5	338
7	Sundalpur *	62.2	50.2	0.25	24.5	25.7	1
8	Rupganj	48.0	33.6	0.00	0.7	32.9	1
Bapex		2,332.2	1,460.8	4.39	611.0	849.8	547
9	Meghna	122.0	101.0	0.10	80.6	20.4	131
10	Narshingdi	405.0	345.0	0.79	243.9	101.1	482
11	Kamta	72.0	50.0	0.00	21.1	28.9	4
12	Habiganj	3,981.0	2,787.0	4.13	2,712.3	74.7	150
13	Bakhrabad	1,825.0	1,387.0	1.01	872.9	514.1	1,084
14	Titans	9,039.0	7,582.0	11.88	5,337.2	2,244.8	5,774
BGFCL		15,444.0	12,252.0	17.91	9,268.1	2,983.9	7,625
15	Sangu	976.0	771.0	0.00	489.5	281.5	37
Santos/Cairn		976.0	771.0	0.00	489.5	281.5	37
16	Bibiyan**	8,383.0	5,755.4	32.96	5,631.2	124.2	32,013
17	Moulavi Bazar**	494.0	428.0	0.47	348.2	79.8	121
18	Jalalabad**	2,716.0	1,429.3	5.18	1,601.4	0.0	11,670
Chevron		11,593.0	7,612.7	38.61	7,580.9	31.8	43,805
19	Feni	185.0	130.0	0.00	63.0	67.0	110
Niko		185.0	130.0	0.00	63.0	67.0	110
20	Kailas Tila	3,463.0	2,880.0	0.81	796.9	2,083.1	8,497
21	Sylhet	580.0	408.0	0.17	222.1	185.9	846
22	Rashidpur	3,887.0	3,134.0	1.40	703.9	2,430.1	844
23	Chattak	677.0	474.0	0.00	25.8	448.2	4
24	Beani Bazar	225.0	137.0	0.44	109.9	27.1	1,794
SGFL		8,832.0	7,033.0	2.82	1,858.7	5,174.3	11,984
25	Bangura	730.0	621.0	1.39	547.4	73.6	1,419
Tullow		730.0	621.0	1.39	547.4	73.6	1,419
26	Kutubdia	65.0	46.0	0.00	0.0	46.0	0
Total		40,092.2	29,926.5	65.12	20,418.5	9,508.0	65,528

* Preliminary reserve estimated by BAPEX

** 2P reserve estimation by Petrobangla

Production comparison between June'23 & July'23

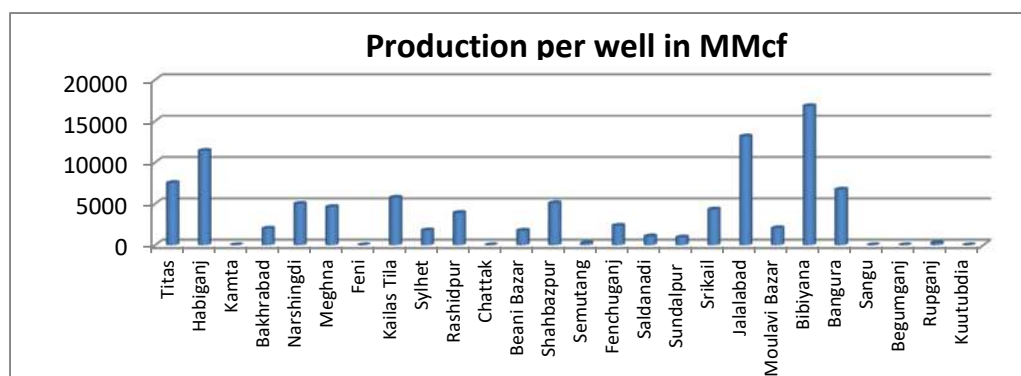


Sl No.	Field	Gas Prod. (MMcf) in June'23	Daily Avg. (MMcfd) in June'23	Gas Prod. (MMcf) in July 23	Daily Avg. (MMcfd) in July'23
1	Begumganj	242	8	250	8
2	Shahbazpur	1786	60	2413	78
3	Semutang	24	1	20	1
4	Fenchuganj	355	12	382	12
5	Salda Nadi	102	3	105	3
6	Srikail	955	32	971	31
7	Sundalpur	237	8	245	8
8	Rupganj	0	0	0	0
Bapex		3701	123	4387	142
9	Meghna	102	3	105	3
10	Narshingdi	767	26	790	25
11	Kamta	0	0	0	0
12	Habiganj	4175	139	4132	133
13	Bakhrabad	981	33	1008	33
14	Titas	11459	382	11881	383
BGFCL		17484	583	17915	578
15	Sangu	0	0	0	0
Santos/Cairn		0	0	0	0
16	Bibiyana	31410	1047	32958	1063
17	Moulavi Bazar	459	15	473	15
18	Jalalabad	5121	171	5183	167
Chevron		36989	1233	38613	1246
19	Feni	0	0	0	0
Niko		0	0	0	0
20	Kailas Tila	824	27	805	26
21	Sylhet	172	6	170	5
22	Rashidpur	1352	45	1403	45
23	Chattak	0	0	0	0
24	Beani Bazar	433	14	441	14
SGFL		2782	93	2820	91
25	Bangura	1382	46	1387	45
Tullow		1382	46	1387	45
26	Kutubdia	0	0	0	0
Total		66006	2078	65122	2101

Production per well & production reserve ratio



	No of production well	Total 2p-Recoverable	2022-23 production	production per well mmcf	production reserve ratio
Titas	26	7582	143.51	5519.62	0.019
Habiganj	8	2787	57.2	7150.00	0.021
Kamta	0	50	0	0.00	0.000
Bakhrabad	7	1387	12.63	1804.29	0.009
Narshingdi	2	345	9.9	4950.00	0.029
Meghna	1	101	2.63	2630.00	0.026
Feni	0	130	0	0.00	0.000
Kailas Tila	4	2880	11.31	2827.50	0.004
Sylhet	1	408	2.23	2230.00	0.005
Rashidpur	5	3134	16.12	3224.00	0.005
Chattak	0	474	0	0.00	0.000
Beani Bazar	1	137	2.7	2700.00	0.020
Shahbazpur	4	261	22.81	5702.50	0.087
Semutang	2	318	0.28	140.00	0.001
Fenchuganj	2	329	5.09	2545.00	0.015
Saldanadi	2	275	1.13	565.00	0.004
Sundalpur	1	50.2	2.78	2780.00	0.055
Srikail	3	161	14.78	4926.67	0.092
Jalalabad	7	1429.3	68.77	9824.29	0.048
Moulavi Bazar	4	428	5.09	1272.50	0.012
Bibiyana	26	5755.4	439.28	16895.38	0.076
Bangura	5	621	20.69	4138.00	0.033
Sangu	0	771	0	0.00	0.000
Begumganj	1	33	3.07	0.00	0.093
Rupganj	0	33.6	0	0.00	0.000
Kuutubdia	0	46	0	0.00	0.000
Total	112	29926.5	842	7517.86	0.028



Monthly Production by Field and Well upto July 2023



HYDROCARBON UNIT
Energy & Mineral Resources Division

Figures in mmscf

Well	Jan	Feb	Mar	Apr	May	Jun	Jul	Aug	Sep	Oct	Nov	Dec	Total	Cumulative	2022	2021	2020
Field : Bakharabad																	
BKB-1	430	385	427	412	420	406	418						2,898	161,426	4,909	4,265	4,892
BKB-2	0	0	0	0	0	0	0						0	87,012	0	0	63
BKB-3	134	122	134	127	131	127	134						910	168,808	1,658	1,774	1,864
BKB-4	0	0	0	0	0	0	0						0	55,872	0	0	0
BKB-5	165	145	163	159	156	154	161						1,104	66,501	1,683	1,443	1,703
BKB-6	0	0	0	0	0	0	0						0	50,069	0	0	0
BKB-7	0	0	0	0	0	0	0						0	107,750	0	0	0
BKB-8	163	146	157	143	136	129	132						1,008	138,197	2,576	2,818	2,969
BKB-9	128	109	109	117	129	119	117						828	29,712	1,351	1,655	2,171
BKB-10	52	45	49	47	48	45	45						332	7,597	673	811	1,015
Field Total:	1,072	953	1,039	1,007	1,021	981	1008	0	0	0	0	0	7,079	872,944	12,850	12,767	14,678
Daily Avg.(mmscfd)	35	34	34	34	33	33	33	0	0	0	0	0	33		35	35	40
Field : Bangura																	
Bangura-1	271	237	255	228	245	246	243						1,724	105,692	3,183	3,752	3,640
Bangura-2	312	273	296	187	300	294	300						1,962	99,218	3,671	4,395	4,340
Bangura-3	426	373	407	391	370	366	365						2,697	120,450	4,885	4,988	4,958
Bangura-6	205	179	196	138	221	123	129						1,192	22,118	2,349	2,413	3,700
Bangura-5	331	289	314	322	349	353	350						2,308	199,904	3,243	11,513	15,921
Field Total:	1,545	1,351	1,467	1,266	1,486	1,382	1387	0	0	0	0	0	9,883	547,383	17,331	27,062	32,559
Daily Avg.(mmscfd)	50	48	47	42	48	46	45	0	0	0	0	0	47		47	74	89
Field : Beani Bazar																	
BB-1	240	218	242	233	239	234	237						1,642	37,320	198	0	0
BB-2	206	185	205	199	205	200	204						1,403	72,628	2,605	2,809	2,940
Field Total:	446	403	446	432	444	433	441	0	0	0	0	0	3,046	109,948	2,802	2,809	2,940
Daily Avg.(mmscfd)	14	14	14	14	14	14	14	0	0	0	0	0	14		8	8	8
Field : Bibiyana																	
BY-1	1,282	1,158	1,276	1037	1,191	1,109	1173						8,226	470,888	17,288	21,751	26,283
BY-2	927	832	918	836	872	826	845						6,056	329,586	8,971	9,922	12,748
BY-3	1,080	972	1,075	858	1,037	979	1058						7,060	292,286	14,527	16,543	14,326
BY-4	1,153	1,074	1,183	989	1,153	1,090	1166						7,807	268,184	14,165	18,221	22,661
BY-5	685	617	679	579	660	589	614						4,422	206,843	9,080	9,764	5,441
BY-6	861	669	774	728	837	821	845						5,534	271,548	13,107	14,852	7,419
BY-7	1,100	1,005	1,118	895	1,091	1,000	1085						7,292	332,885	14,668	17,887	21,873
BY-8	1,619	1,448	1,593	1436	1,564	1,432	1528						10,620	200,605	17,706	19,722	9,776
BY-9	1,408	1,267	1,407	1238	1,374	1,280	1318						9,292	184,175	18,148	19,492	7,462
BY-10	1,225	1,100	1,222	1115	1,186	1,100	1112						8,059	417,855	16,290	18,834	16,678
BY-11	1,451	1,308	1,455	1296	1,424	1,329	1371						9,636	199,725	19,303	22,649	19,194

Monthly Production by Field and Well upto July 2023



HYDROCARBON UNIT

Energy & Mineral Resources Division

Figures in mmscf

Well	Jan	Feb	Mar	Apr	May	Jun	Jul	Aug	Sep	Oct	Nov	Dec	Total	Cumulative	2022	2021	2020			
BY-12	1,348	1,213	1,339	1182	1,295	1,207	1239						8,823	210,997	17,485	19,912	17,675			
BY-13	2,403	2,181	2,403	2189	2,327	2,101	2213						15,816	169,069	24,524	23,092	21,893			
BY-14	1,350	1,217	1,353	1063	1,306	1,152	1216						8,657	146,482	17,387	11,632	9,202			
BY-15	804	717	782	726	794	744	824						5,392	168,475	9,144	14,666	20,428			
BY-16	1,892	1,708	1,892	1676	1,858	1,736	1809						12,571	139,189	20,624	22,128	12,548			
BY-17	963	865	957	884	920	835	906						6,330	144,793	12,196	12,683	17,109			
BY-18	1,363	1,227	1,363	1127	1,327	1,232	1316						8,955	223,296	18,222	22,024	26,284			
BY-19	1,517	1,352	1,487	1360	1,393	1,218	1263						9,589	131,894	18,680	20,455	23,886			
BY-20	1,138	993	1,064	988	1,018	917	896						7,013	119,858	11,274	19,054	21,972			
BY-21	2,171	1,997	2,171	1987	2,098	1,891	1902						14,217	124,516	24,533	21,327	20,638			
BY-22	962	869	964	862	942	862	944						6,406	178,447	12,780	15,195	16,774			
BY-23	1,384	1,272	1,418	1317	1,388	1,316	1399						9,493	147,270	17,633	20,712	22,066			
BY-24	861	773	864	799	828	736	773						5,633	101,738	10,802	6,566	10,304			
BY-25	2,165	1,965	2,145	1978	2,083	1,877	1971						14,184	214,983	26,295	19,902	22,625			
BY-26	2,374	2,105	2,356	2190	2,262	2,033	2174						15,494	235,626	25,544	22,847	26,748			
Field Total:	35488	31904	35257	31336	34227	31410	32958	0	0	0	0	0	232,579	5,631,213	430,374	461,830	454,012			
Daily Avg.(mmscfd)	1145	1,139	1137	1045	1104	1047	1063	0	0	0	0	0	1,097		1,179	1,265	1,240			
Field :	Chattak																			
Ch-1	Production Suspended													25,834						
Field Total:	0			0			0			0			0			25,834				
Daily Avg.(mmscfd)	0			0			0			0			0			0				
Field :	Fenchuganj																			
Fenchuganj-2														0						
Fenchuganj-3	165	123	127	140	146	125	131						957	98,479	2,431	1,029	1,547			
Fenchuganj-4	236	212	236	222	238	230	251						1,625	36,883	3,191	2,486	3			
Field Total:	401	335	362	363	384	355	382	0					2,582	173,531	5,622	3,515	1,550			
Daily Avg.(mmscfd)	13	12	12	12	12	12	12	0					12		15	10	4			
Field :	Feni																			
Feni-1	Production Suspended								0				0				34,214			
Feni-2	Production Suspended								0				0				6,119			
Feni-3	Production Suspended								0				0				2,176			
Feni-4	Production Suspended								0				0				14,386			
Feni-5	Production Suspended								0				0				6,127			
Field Total:														63,023						
Daily Avg.(mmscfd)																				

Monthly Production by Field and Well upto July 2023



HYDROCARBON UNIT

Energy & Mineral Resources Division

Figures in mmscf

Well	Jan	Feb	Mar	Apr	May	Jun	Jul	Aug	Sep	Oct	Nov	Dec	Total	Cumulative	2022	2021	2020
Field : Habiganj																	
Hbj-1	0	0	0	0	0	0	0						0	287,251	92	1,276	3,651
Hbj-2	0	0	0	0	0	0	0						0	275,704	0	0	0
Hbj-3	621	561	621	578	590	570	587						4,127	419,086	8,119	8,784	9,952
Hbj-4	621	561	621	578	590	570	587						4,127	413,544	8,119	8,784	9,952
Hbj-5	653	589	652	631	653	630	576						4,384	336,109	8,073	8,381	8,620
Hbj-6	405	365	404	391	405	391	335						2,695	186,184	5,165	5,461	5,305
Hbj-7	1,208	1,092	1,209	1,170	1,207	1,169	1,210						8,266	317,675	14,215	14,133	13,671
Hbj-8	0	0	0	0	0	0	0						0	11,023	0	0	0
Hbj-9	0	0	0	0	0	0	0						0	52,652	0	0	0
Hbj-10	619	559	619	599	618	587	589						4,189	293,617	7,250	8,660	9,961
Hbj-11	278	251	278	269	277	257	248						1,858	119,500	3,430	4,890	6,094
Field Total:	4,404	3,978	4,404	4,215	4,341	4,175	4132	0	0	0	0	0	29,648	2,712,344	54,462	60,368	67,206
Daily Avg.(mmscfd)	142	142	142	141	140	139	133	0	0	0	0	0	140		149	165	184
Field : Jalalabad																	
JB-1	776	704	748	682	756	763	744						5,173	287,257	9,072	8,050	9,224
JB-2	985	895	953	861	965	975	964						6,598	331,916	11,539	10,135	11,644
JB-3	1,297	1,177	1,266	1,137	1,271	1,275	1,240						8,663	409,538	15,205	13,420	15,132
JB-4	1	1	1	1	0	1	0						6	303,147	4,006	7,176	7,355
JB-6	1,332	1,211	1,298	1,118	1,289	1,141	1,242						8,630	128,351	15,513	13,697	14,814
JB-7	0	0	0	0	0	0	0						0	43,512	1	6	2,718
JB-8	1,052	957	1,026	893	1,024	966	993						6,912	97,723	12,218	10,735	11,643
Field Total:	5,443	4,947	5,292	4,691	5,304	5,121	5183	0	0	0	0	0	35,982	1,601,444	67,554	63,219	72,531
Daily Avg.(mmscfd)	176	177	171	156	171	171	167	0	0	0	0	0	170		185	173	198
Field : Kailas Tila																	
KTL-1	0	0	0	0	0	0	0						0	205,181	0	0	0
KTL-2	0	0	0	0	0	0	0						0	192,972	0	1,368	6,291
KTL-3	0	0	0	0	0	0	0						0	140,672	0	0	269
KTL-4	126	108	99	82	69	40	4						530	104,670	1,507	1,761	2,139
KTL-5	0	0	0	0	0	0	0						0	17,923	0	0	0
KTL-6	755	680	763	734	763	741	761						5,197	132,589	9,051	8,960	9,249
KTL-7	111	74	77	63	48	43	40						456	2,906	1,635	0	0

Monthly Production by Field and Well upto July 2023



HYDROCARBON UNIT

Energy & Mineral Resources Division

Figures in mmscf

Well	Jan	Feb	Mar	Apr	May	Jun	Jul	Aug	Sep	Oct	Nov	Dec	Total	Cumulative	2022	2021	2020
Field Total:	993	862	939	880	880	824	805	0	0	0	0	0	6,183	796,914	12,193	12,089	17,949
Daily Avg.(mmscfd)	32	31	30	29	28	27	26	0	0	0	0	0	29		33	33	49
Field : Kamta																	
Kamta-1	Production Suspended													21,139			
Field Total:	0													21,139			
Daily Avg.(mmscfd)																	
Field : Meghna																	
M-1	96	93	101	97	102	102	105						696	80,566	1,893	2,602	2,945
Field Total:	96	93	101	97	102	102	105	0	0	0	0	0	696	80,566	1,893	2,602	2,945
Daily Avg.(mmscfd)	3	3	3	3	3	3	3	0	0	0	0	0	3		5	7	8
Field : Moulavi Bazar																	
MV Bazar-2	46	40	86	97	109	79	102						561	57,783	833	330	1,217
MV Bazar-3	185	156	274	326	397	289	340						1,966	171,694	3,327	2,460	3,848
MV Bazar-4	30	31	22	9	15	54	19						180	60,488	228	624	266
MV Bazar-5	0	0	0	0	0	0	0							66			
MV Bazar-6	234	207	118	7	8	37	0						610	22,191	1,616	1,053	529
MV Bazar-7							12						12	5,659	0	0	0
MV Bazar-9													0	30,337	0	0	0
Field Total:	495	433	500	440	529	459	473	0	0	0	0	0	3,328	348,218	6,005	4,466	5,859
Daily Avg.(mmscfd)	16	15	16	15	17	15	15	0	0	0	0	0	16		16	12	16
Field : Narshingdi																	
N-1	485	442	488	436	487	466	483						3,287	171,145	5,828	5,812	5,960
N-2	317	285	312	282	316	301	306						2,119	72,801	3,917	4,001	3,661
Field Total:	802	726	800	718	803	767	790	0	0	0	0	0	5,406	243,946	9,746	9,814	9,621
Daily Avg.(mmscfd)	26	26	26	24	26	26	25	0	0	0	0	0	26		27	27	26
Field : Rashidpur																	
RP-1	565	510	564	544	564	548	566						3,861	196,851	6,619	6,557	6,447
RP-2	0	0	0	0	0	0	0						0	82,474	0	0	0
RP-3	217	196	217	210	217	210	217						1,484	144,025	2,555	2,444	2,891
RP-4	239	215	238	229	238	244	255						1,659	140,527	2,765	2,668	2,655

Monthly Production by Field and Well upto July 2023



HYDROCARBON UNIT

Energy & Mineral Resources Division

Figures in mmscf

Well	Jan	Feb	Mar	Apr	May	Jun	Jul	Aug	Sep	Oct	Nov	Dec	Total	Cumulative	2022	2021	2020
RP-5	0	0	0	0	0	0	0						0	25,647	0	0	0
RP-6	0	0	0	0	0	0	0						0	9,983	0	0	0
RP-7	145	146	163	158	163	170	179						1,124	72,184	1,688	1,634	1,628
RP-8	186	168	186	180	186	180	186						1,272	32,185	2,339	2,798	3,228
Field Total:	1,353	1,235	1,368	1,321	1,368	1,352	1,403	0	0	0	0	0	9,399	703,877	15,965	16,099	16,849
Daily Avg.(mmscfd)	44	44	44	44	44	45	45	0	0	0	0	0	44		44	44	46
Field : Salda Nadi																	
Salda-1													0	36,904	0	0	0
Salda-2	87	74	84	78	81	77	77						558	29,777	724	0	0
Salda-3	57	45	23	22	27	21	24						220	30,770	563	886	1,712
Salda-4	11	7	4	4	5	3	4						38	487	75	136	92
Field Total:	155	126	111	104	113	102	105	0	0	0	0	0	816	97,938	1,361	1,022	1,804
Daily Avg.(mmscfd)	5	5	4	3	4	3	3	0	0	0	0	0	4		4	3	5
Field : Sangu																	
Sangu-1	0	0	0	0	0	0	0	0	0	0	0	0	0	116,191	0	0	0
Sangu-3z	0	0	0	0	0	0	0	0	0	0	0	0	0	131,796	0	0	0
Sangu-4	0	0	0	0	0	0	0	0	0	0	0	0		87,280			
Sangu-5	0	0	0	0	0	0	0	0	0	0	0	0		61,674			
Sangu-7	0	0	0	0	0	0	0	0	0	0	0	0		18,202			
Sangu-8	0	0	0	0	0	0	0	0	0	0	0	0		37,619			
Sangu-9	0	0	0	0	0	0	0	0	0	0	0	0	0	30,638	0	0	0
Sangu-10	Production Suspended							0	0	0	0	0	0				
Sangu-11	0	0	0	0	0	0		0	0	0	0	0	0	6,067	0	0	0
Field Total:	0	0	0	0	0	0	0	0	0	0	0	0	0	489,467	0	0	0
Daily Avg.(mmscfd)	0	0	0	0	0	0	0	0	0	0	0	0	0		0	0	0
Field : Semutang																	
Semutang-5													0	12,311	0	3	104
Semutang-6	20	19	22	21	23	24	20						149	2,021	261	290	204
Field Total:	20	19	22	21	23	24	20	0	0	0	0	0	149	14,332	261	293	308
Daily Avg.(mmscfd)	1	1	1	1	1	1	1	0	0	0	0	0	1		1	1	1

Monthly Production by Field and Well upto July 2023



HYDROCARBON UNIT

Energy & Mineral Resources Division

Figures in mmscf

Well	Jan	Feb	Mar	Apr	May	Jun	Jul	Aug	Sep	Oct	Nov	Dec	Total	Cumulative	2022	2021	2020
Field : Shahbazpur																	
Shahbazpur-1	182	63	76	0	0	223	0						544	23,211	134	48	254
Shahbazpur-2	545	402	214	0	0	46	553						1,760	37,205	6,906	6,132	5,129
Shahbazpur-3	442	380	508	607	435	502	478						3,351	42,829	6,663	7,520	6,301
Shahbazpur-4	674	546	644	687	549	549	763						4,412	38,920	7,381	5,987	2,374
East 1	532	500	236	0	411	466	619						2,764	4,412	1,648	0	0
Field Total:	2,375	1,891	1,677	1,294	1,395	1,786	2,413	0	0	0	0	0	12,831	146,578	21,083	19,686	14,058
Daily Avg.(mmscfd)	77	68	54	43	45	60	78	0	0	0	0	0	61		58	54	38
Field Srikail																	
Srikail-2	276	248	246	221	239	212	210						1,652	55,640	3,326	2,981	4,450
Srikail-3	190	152	106	76	95	60	79						758	47,083	2,266	1,880	3,360
Srikail-4	614	560	496	441	517	506	502						3,636	32,079	7,102	7,309	2,561
East 1	194	171	187	175	186	178	179						1,271	5,710	2,584	1,854	
Field Total:	1,274	1,131	1,036	913	1,038	955	971	0	0	0	0	0	7,317	140,512	15,279	14,024	10,371
Daily Avg.(mmscfd)	41	40	33	30	33	32	31	0	0	0	0	0	35		42	33	28
Field : Sundalpur																	
Sundalpur -1													0	9,809	0	0	0
Sundalpur -2	238	223	250	246	250	237	245						1,691	14,653	2,813	2,752	2,649
Field Total:	238	223	250	246	250	237	245	0	0	0	0	0	1,691	24,462	2,813	2,752	2,649
Daily Avg.(mmscfd)	8	8	8	8	8	8	8	0	0	0	0	0	8		8	8	7
Field : Sylhet																	
Sylhet-3	Production Suspended													89,032			
Sylhet-6	Production Suspended													91,748			
Sylhet-7	22	20	22	20	18	17	17						136	31,391	307	1,207	1,377
Surma-1	26	16	16	15	16	15	16						120	7,152	503	0	0
Sylhet-9	120	114	128	120	135	140	137						894	2,794	1,381	518	
Field Total:	168	150	165	155	169	172	170	0	0	0	0	0	1,151	222,116	2,192	1,207	1,377
Daily Avg.(mmscfd)	5	5	5	5	5	6	5	0	0	0	0	0	5		6	3	4
Field : Titas																	
Titas-1	511	456	494	442	510	488	496						3,396	467,176	5,838	6,039	5,626
Titas-2	718	637	685	584	701	672	689						4,686	478,072	8,452	9,335	9,217

Monthly Production by Field and Well upto July 2023



HYDROCARBON UNIT
Energy & Mineral Resources Division

Figures in mmscf

Well	Jan	Feb	Mar	Apr	May	Jun	Jul	Aug	Sep	Oct	Nov	Dec	Total	Cumulative	2022	2021	2020
Titas-3	0	0	0	0	0	0	0						0	314,888	0	0	0
Titas-4	780	714	786	684	800	764	776						5,304	414,797	9,122	9,551	9,356
Titas-5	817	740	822	698	817	771	781						5,446	474,603	9,770	9,889	9,526
Titas-6	817	760	808	635	782	780	809						5,390	407,366	10,079	9,754	9,401
Titas-7	711	650	714	593	701	689	697						4,755	374,488	8,312	4,528	1,784
Titas-8	565	522	588	489	563	539	553						3,819	300,639	6,649	6,569	5,115
Titas-9	521	459	500	418	516	494	526						3,434	304,678	6,380	6,404	5,770
Titas-10	652	573	638	528	638	618	625						4,271	234,047	7,998	7,512	7,397
Titas-11	702	634	696	664	678	646	655						4,676	285,933	8,511	7,571	9,440
Titas-12	462	413	458	441	461	453	454						3,143	124,140	5,192	4,363	5,428
Titas-13	0	0	0	0	0	0	0						0	194,541	0	0	0
Titas-14	0	0	0	0	0	0	0						0	163,216	0	2,195	4,966
Titas-15	265	213	159	121	113	23	51						945	155,590	2,653	3,194	4,306
Titas-16	585	546	605	498	580	556	561						3,932	177,277	6,781	6,637	6,373
Titas-17	380	335	326	299	310	271	339						2,260	61,527	4,551	4,450	4,969
Titas-18	465	406	393	369	393	327	364						2,717	62,320	5,227	5,093	5,166
Titas-19	527	505	550	447	499	502	502						3,533	52,805	5,690	5,187	4,754
Titas-20	306	261	258	276	289	295	293						1,979	35,867	3,622	4,031	3,817
Titas-21	279	281	251	255	274	267	264						1,871	23,426	3,375	3,020	2,892
Titas-22	0	0	0	0	0	0	0						0	30,349	0	362	2,436
Titas-27	487	423	427	399	436	397	396						2,967	54,061	6,002	5,418	5,233
Titas-23	543	506	581	557	571	530	540						3,828	36,435	5,880	6,314	5,328
Titas-24	0	0	0	0	0	176	257						433	9,915	462	0	1,238
Titas-25	478	423	482	483	454	416	432						3,169	38,559	5,889	5,439	5,424
Titas-26	789	716	791	756	788	784	819						5,444	60,442	8,956	9,188	8,961
Field Total:	12,362	11,173	12,013	10,636	11,875	11,459	11,881	0	0	0	0	0	81,398	5,337,155	145,392	142,044	143,923
Daily Avg.(mmscfd)	399	399	388	355	383	382	383	0	0	0	0	0	384		398	389	393
Field : Begumganj																	
Begumganj-3	252	227	251	242	255	242	250						1,719	12,974	2,976	2,719	1,940
Field Total:	252	227	251	242	255	242	250	0	0	0	0	0	1,719	12,974	2,976	2,719	1,940
Daily Avg.(mmscfd)	8	8	8	8	8	8	8	0	0	0	0	0	8		8	7	5
Field : Rupganj																	
Rupganj-1	0	0	0	0	0	0	0	0	0	0	0	0	0	679	0	0	0

Monthly Production by Field and Well upto July 2023



HYDROCARBON UNIT
Energy & Mineral Resources Division

Figures in mmscf

Well	Jan	Feb	Mar	Apr	May	Jun	Jul	Aug	Sep	Oct	Nov	Dec	Total	Cumulative	2022	2021	2020
Field Total:	0	0	0	0	0	0	0	0	0	0	0	0	0	679	0	0	0
Daily Avg.(mmscfd)	0	0	0	0	0	0	0	0	0	0	0	0	0		0	0	0
Grand Total (in Bcf)	69.38	62.16	67.50	60.38	66.01	62.34	65.12	0.00	0.00	0.00	0.00	0.00	452.9	<i>20,418.53</i>	828.2	858.5	875.1
Daily Avg.(mmscfd)	2,238	2,220	2,177	2,013	2,129	2,078	2101	0	0	0	0	0	2,136		2,269	2,352	2,391

Monthly Condensate Production by Fields upto July 2023

Field Name	Jan	Feb	Mar	Apr	May	Jun	Jul	Aug	Sep	Oct	Nov	Dec	Total Cumulative 000' bbl	2022	2021	2020	
Bakhrabad	1,372	1,110	1,311	1,176	1,181	1,177	1,173						8,500	1,084	14,234	14,882	18,004
Daily Avg.	44	40	42	39	38	39	38	0	0	0	0	0	40	39	41	49	
Bangura	4,830	4,270	4,519	3,693	4,241	4,493	4,073						30,119	1,419	49,145	75,148	95,394
Daily Avg.	156	153	146	123	137	150	131	0	0	0	0	0	142	135	206	261	
Beani Bazar	7,447	6,602	7,068	6,727	6,874	6,526	6,662						47,906	1,794	40,093	41,982	46,061
Daily Avg.	240	236	228	224	222	218	215	27	0	0	0	0	226	110	115	126	
Bibiyana	202,652	172,809	196,670	166,711	192,336	178,219	179,052						1,288,449	32,013	1,647,046	2,048,709	2,780,633
Daily Avg.	6,537	6,172	6,344	5,557	6,204	5,941	5,776	0	0	0	0	0	6,078	4,512	5,613	7,597	
Chattak	0	0	0	0	0	0	0	0	0	0	0	0	0	4	0	0	0
Daily Avg.	0	0	0	0	0	0	0	0	0	0	0	0	0	0	0	0	0
Fenchuganj	168	120	165	111	110	96	124						894	122	2,396	2,460	527
Daily Avg.	5	4	5	4	4	3	4	0	0	0	0	0	4	7	7	1	
Feni	0	0	0	0	0	0	0	0	0	0	0	0	0	110	0	0	0
Daily Avg.	0	0	0	0	0	0	0	0	0	0	0	0	0	0	0	0	0
Habiganj	250	175	177	178	207	192	212						1,391	150	2,705	3,416	5,510
Daily Avg.	8	6	6	6	7	6	7	0	0	0	0	0	7	7	9	15	
Jalalabad	26,767	23,093	24,081	21,751	25,507	24,233	24,606						170,038	11,670	329,117	346,435	367,161
Daily Avg.	863	825	777	725	823	808	794	0	0	0	0	0	802	902	949	1,003	
Kailas Tila	12,473	10,800	11,780	11,366	11,217	10,769	10,306						78,711	8,497	149,408	126,611	177,210
Daily Avg.	402	386	380	379	362	359	332	0	0	0	0	0	371	409	347	484	
Kamta	Production Suspended										0	0	4				
Daily Avg.	0										0	0	0	0	0	0	0
Meghna	181	152	176	188	204	165	164						1,230	131	3,491	5,456	6,652
Daily Avg.	6	5	6	6	7	6	5	0	0	0	0	0	6	10	15	18	
Moulavi Bazar	44	36	40	39	52	44	44						298	121	995	847	1,262
Daily Avg.	1	1	1	1	2	1	1	0	0	0	0	0	1	3	2	3	
Narshingdi	1,151	1,037	1,013	944	1,002	953	988						7,088	482	14,905	14,370	13,907

Monthly Condensate Production by Fields upto July 2023

Field Name	Jan	Feb	Mar	Apr	May	Jun	Jul	Aug	Sep	Oct	Nov	Dec	Total Cumulative 000' bbl	2022	2021	2020	
Daily Avg.	37	37	33	31	32	32	32	0	0	0	0	0	33	41	39	38	
Rashidpur	1,202	1,119	1,228	1,155	1,198	1,189	1,228						8,319	844	14,105	14,274	15,049
Daily Avg.	39	40	40	39	39	40	40	0	0	0	0	0	39	39	39	41	
Saldanadi	70	56	54	56	53	56	55						399	60	585	118	240
Daily Avg.	2	2	2	2	2	2	2	0	0	0	0	0	2	2	0	1	
Sangu	0	0	0	0	0	0	0	0	0	0	0	0	0	37	0	0	0
Daily Avg.	0	0	0	0	0	0	0	0	0	0	0	0	0	0	0	0	
Semutang	0	0	0	0	0	0	0	0	0	0	0	0	0	5	0	0	0
Daily Avg.	0	0	0	0	0	0	0	0	0	0	0	0	0	0	0	0	
Shahbazpur	255	239	236	165	150	194	269						1,508	17	2,640	2,655	1,839
Daily Avg.	8	9	8	6	5	6	9	0	0	0	0	0	7	7	7	5	
Srikail	5,592	4,372	4,247	3,442	4,259	3,819	3,876						29,607	338	63,152	61,474	21,213
Daily Avg.	180	156	137	115	137	127	125	0	0	0	0	0	140	173	168	58	
Sundalpur	10	10	11	11	11	10	11						74	1	152	121	89
Daily Avg.	0	0	0	0	0	0	0	0	0	0	0	0	0	0	0	0	
Sylhet	1,159	1,027	1,089	983	843	1,040	959						7,100	846	13,919	10,261	8,982
Daily Avg.	37	37	35	33	27	35	31	0	0	0	0	0	33	38	28	25	
Titas	9,744	8,313	8,719	8,562	10,005	10,471	10,704						66,518	5,774	115,793	108,670	117,408
Daily Avg.	314	297	281	285	323	349	345	0	0	0	0	0	314	317	298	321	
Begumganj	68	64	68	62	84	72	74						492	4	814	831	380
Daily Avg.	2	2	0	0	0	2	2	0	0	0	0	0	2	2	2	1	
Rupganj	0	0	0	0	0	0	0	0	0	0	0	0	0	1	0	0	0
Daily Avg.	0	0	0	0	0	0	0	0	0	0	0	0	0	0	0	0	
Total (000'bbl)	275	235	263	227	260	244	245	0	0	0	0	0	1,749	65,528	2,465	2,879	3,678
Daily Avg. (000'bbl)	8.9	8.4	8.5	7.6	8.4	8	7.9	0.0	0.0	0.0	0	0	8	6.8	7.9	10.0	

Note: Historical condensate figure of Sangu available from 2006. Sylhet available from August 1964

Monthly Water Production by Fields in July 2023



HYDROCARBON UNIT
Energy & Mineral Resources Division

Field Name	Jan	Feb	Mar	Apr	May	Jun	Jul	Aug	Sep	Oct	Nov	Dec	Total	2022	2,021
Bakhrabad	7,168	6,695	7,869	7,948	8,318	8,571	9,323						55,892	41,667	23,532
Daily Avg.	231	239	254	265	268	286	301	0	0	0	0	0	264	114	64
Bangura	3,188	2,788	3,038	2,614	3,078	3,077	2,909						20,692	228,414	247,538
Daily Avg.	103	100	98	87	99	103	94	0	0	0	0	0	98	626	678
Beani Bazar	21,352	19,232	21,227	20,897	21,576	21,238	21,925						147,447	227,536	202,439
Daily Avg.	689	687	685	697	696	708	707	0	0	0	0	0	696	623	555
Bibiwana	23,666	22,304	24,852	23,096	24,722	22,725	30,664						172,029	300,138	211,873
Daily Avg.	763	797	802	770	797	758	989	0	0	0	0	0	811	822	580
Chattak	0	0	0	0	0	0	0	0	0	0	0	0			
Daily Avg.	0	0	0	0	0	0	0	0	0	0	0	0	0	0	0
Fenchuganj	3,870	2,886	3,335	3,681	4,106	3,481	3,600						24,959	40,238	22,412
Daily Avg.	125	103	108	123	132	116	116	0	0	0	0	0	118	110	61
Feni	0	0	0	0	0	0	0	0	0	0	0	0	0	0	0
Daily Avg.	0	0	0	0	0	0	0	0	0	0	0	0	0	0	0
Habiganj	7,098	6,371	7,133	7,133	8,745	8,897	9,490						54,867	76,382	40,135
Daily Avg.	229	228	230	238	282	297	306	0	0	0	0	0	259	209	110
Jalalabad	1,371	1,904	2,097	1,842	1,172	2,029	2,065						12,480	46,828	63,469
Daily Avg.	44	68	68	61	38	68	67	0	0	0	0	0	59	128	174
Kailas Tila	34,680	36,989	44,571	43,895	48,493	54,487	48,483						311,598	166,147	145,547
Daily Avg.	1,119	1,321	1,438	1,463	1,564	1,816	1,564	0	0	0	0	0	1,470	455	399
Kamta	0	0	0	0	0	0	0	0	0	0	0	0			
Daily Avg.	0	0	0	0	0	0	0	0	0	0	0	0	0	0	0
Meghna	8,272	7,704	8,550	8,439	8,835	8,819	9,071						59,690	85,545	22,459
Daily Avg.	267	275	276	281	285	294	293	0	0	0	0	0	282	234	62
Moulavi Baz	274	214	242	237	274	240	225						1,706	3,396	2,559
Daily Avg.	9	8	8	8	9	8	7	0	0	0	0	0	8	9	7
Narshingdi	906	822	897	812	901	869	894						6,101	11,738	10,185
Daily Avg.	29	29	29	27	29	29	29	0	0	0	0	0	29	32	28
Rashidpur	21,024	19,881	22,380	21,654	22,379	21,851	22,805						151,974	236,678	237,280
Daily Avg.	678	710	722	722	722	728	736	0	0	0	0	0	717	648	650
Saldanadi	139	106	114	99	111	104	97						770	1,564	1,169
Daily Avg.	4	4	4	3	4	3	3	0	0	0	0	0	4	4	3

Monthly Water Production by Fields in July 2023



HYDROCARBON UNIT
Energy & Mineral Resources Division

Field Name	Jan	Feb	Mar	Apr	May	Jun	Jul	Aug	Sep	Oct	Nov	Dec	Total	2022	2,021
Sangu	0	0	0	0	0	0	0	0	0	0	0	0	0	0	0
Daily Avg.	0	0	0	0	0	0	0	0	0	0	0	0	0	0	0
Semutang	3,813	3,516	3,973	3,923	4,456	5,142	4,605						29,428	35,265	1,175
Daily Avg.	123	126	128	131	144	171	149	0	0	0	0	0	139	97	3
Shahbazpur	2,903	2,331	2,072	1,595	1,729	2,201	2,962						15,793	27,855	24,246
Daily Avg.	94	83	67	53	56	73	96	0	0	0	0	0	74	76	66
Srikail	1,959	1,703	1,631	1,357	1,574	1,396	1,434						11,054	19,797	15,601
Daily Avg.	63	61	53	45	51	47	46	0	0	0	0	0	52	54	43
Sundalpur	41	40	44	45	45	43	45						303	541	481
Daily Avg.	1	1	1	2	1	1	1	0	0	0	0	0	1	1	1
Sylhet	16,383	14,808	16,402	15,834	16,215	15,721	16,260						111,623	176,282	139,166
Daily Avg.	528	529	529	528	523	524	525	0	0	0	0	0	527	483	381
Titas	19,903	17,281	16,226	13,881	15,251	12,283	13,715						108,540	210,230	213,927
Daily Avg.	642	617	523	463	492	409	442	0	0	0	0	0	512	576	586
Begumganj	86	76	87	74	70	77	79						549	1,024	962
Daily Avg.	3	3	3	2	2	3	3	0	0	0	0	0	3	3	3
Rupganj	0	0	0	0	0	0	0	0	0	0	0	0	0	0	0
Daily Avg.	0	0	0	0	0	0	0	0	0	0	0	0	0	0	0
Total (000'b	178,096	167,651	186,740	179,056	192,051	193,251	200,651	0	0	0	0	0	1,297,496	1,937,265	1,626,156
Daily Avg. (000'bbl)	5,745	5,988	6,024	5,969	6,195	6,442	6,473	0	0	0	0	0	6,120	5,308	4,455

Conditions of Field and Well upto July 2023



Well	company	well type	Discovery	production start	Drilled depth (ft)	Pressure	Pressure type	Completion Zone
Field : Bakharabad								
BKB-1	BGFCL	Vertical	1969	June,1969	9309		FWHP	J
BKB-2	BGFCL	Directional	1969	October,1981	7496	248-274	FWHP	G
BKB-3	BGFCL	Directional	1969	April,1982	9339	356-412	FWHP	G
BKB-4	BGFCL	Directional	1969	June,1982	9430			D
BKB-5	BGFCL	Directional	1969	Sept,1982	9675	1555-1646	FWHP	B
BKB-6	BGFCL	Directional	1969	March,1989	8785			J
BKB-7	BGFCL	Directional	1969	July,1989	8605		FWHP	J
BKB-8	BGFCL	Directional	1969	Sept,1989	8840	490-523	FWHP	J
BKB-9	BGFCL	Vertical	1969	August,2013	8318	1005-1097	FWHP	G
BKB-10	BGFCL	Directional	1969	June,2016	9291	1010-1102	FWHP	K
Field : Bangura								
Bangura-1	Tullow		2004			887-940	FWHP	D
Bangura-2	Tullow		2004			587-685	FWHP	D/E
Bangura-3	Tullow		2004			719-789	FWHP	D
Bangura-6	Tullow		2004			708-780	FWHP	D
Bangura-5	Tullow		2004			579-621	FWHP	D
Field : Beani Bazar								
BB-1	SGFL		1981	July,1999	13480	580-620	SIWHP	Upper
BB-2	SGFL		1981	July,1999	12048	3210-3220	FWHP	Upper
Field : Bibiyana								
BY-1	Chevron		1998			1547-2007	FWHP	BB60, BB66
BY-2	Chevron		1998			1313-1390	FWHP	BB60, BH20A, BH20E
BY-3	Chevron		1998			1363-1403	FWHP	BB70
BY-4	Chevron		1998			1330-1390	FWHP	BH10
BY-5	Chevron		1998			1254-1299	FWHP	BH20A, BH20B, BH20C, BH20D
BY-6	Chevron		1998			1250-1486	FWHP	BB70
BY-7	Chevron		1998			1454-1566	FWHP	BH10
BY-8	Chevron		1998			1270-1297	FWHP	BH20A, BH20B
BY-9	Chevron		1998			1243-1273	FWHP	BH10
BY-10	Chevron		1998			1465-1533	FWHP	BB60
BY-11	Chevron		1998			1260-1284	FWHP	BH20A, BH20B
BY-12	Chevron		1998			1259-1332	FWHP	BB70
BY-13	Chevron		1998			1300-1356	FWHP	BH20A, BH20B
BY-14	Chevron		1998			1342-1632	FWHP	BH20A, BH20B
BY-15	Chevron		1998			2189-2240	FWHP	BB60
BY-16	Chevron		1998			1381-1644	FWHP	BH10, BH20D

Conditions of Field and Well upto July 2023



Well	company	well type	Discovery	production start	Drilled depth (ft)	Pressure	Pressure type	Completion Zone
BY-17	<i>Chevron</i>		<i>1998</i>			<i>2104-2229</i>	<i>FWHP</i>	<i>BB60</i>
BY-18	<i>Chevron</i>		<i>1998</i>			<i>1904-2218</i>	<i>FWHP</i>	<i>BB60</i>
BY-19	<i>Chevron</i>		<i>1998</i>			<i>1354-1477</i>	<i>FWHP</i>	<i>BH10, BH20A</i>
BY-20	<i>Chevron</i>		<i>1998</i>			<i>1248-1262</i>	<i>FWHP</i>	<i>BH20D, BH20A, BH10</i>
BY-21	<i>Chevron</i>		<i>1998</i>			<i>1333-1348</i>	<i>FWHP</i>	<i>BH20A, BH20B, BH10</i>
BY-22	<i>Chevron</i>		<i>1998</i>			<i>1552-1586</i>	<i>FWHP</i>	<i>BB60</i>
BY-23	<i>Chevron</i>		<i>1998</i>			<i>1739-2021</i>	<i>FWHP</i>	<i>BH10, BH20A, BH20B, BH20C</i>
BY-24	<i>Chevron</i>		<i>1998</i>			<i>1337-2091</i>	<i>FWHP</i>	<i>BB60</i>
BY-25	<i>Chevron</i>		<i>1998</i>			<i>1728-1857</i>	<i>FWHP</i>	<i>BB60, BB66</i>
BY-26	<i>Chevron</i>		<i>1998</i>			<i>1877-2094</i>	<i>FWHP</i>	<i>BB60, BB64</i>
Field : Chattak								
Ch-1	SGFL		1959					
Field : Fenchuganj								
Fenchuganj-2	<i>BAPEX</i>		<i>1988</i>	<i>May, 2004</i>				
Fenchuganj-3	<i>BAPEX</i>		<i>1988</i>	<i>February, 2005</i>		<i>2004-2010</i>		<i>upper</i>
Fenchuganj-4	<i>BAPEX</i>		<i>1988</i>			<i>2037-2065</i>		
Field : Feni								
Feni-1	<i>BAPEX</i>		<i>1981</i>					
Feni-2	<i>BAPEX</i>		<i>1981</i>					
Feni-3	<i>BAPEX</i>		<i>1981</i>					
Feni-4	<i>BAPEX</i>		<i>1981</i>					
Feni-5	<i>BAPEX</i>		<i>1981</i>					
Field : Habiganj								
Hbj-1	<i>BGFCL</i>	<i>Vertical</i>	<i>1963</i>	<i>Feb, 1969</i>	<i>11500</i>		<i>FWHP</i>	<i>upper</i>
Hbj-2	<i>BGFCL</i>	<i>Vertical</i>	<i>1963</i>	<i>Feb, 1969</i>	<i>5100</i>		<i>FWHP</i>	<i>upper</i>
Hbj-3	<i>BGFCL</i>	<i>Vertical</i>	<i>1963</i>	<i>July, 1985</i>	<i>5282</i>	<i>1478-1486</i>	<i>FWHP</i>	<i>upper</i>
Hbj-4	<i>BGFCL</i>	<i>Vertical</i>	<i>1963</i>	<i>May, 1985</i>	<i>5249</i>	<i>1460-1467</i>	<i>FWHP</i>	<i>upper</i>
Hbj-5	<i>BGFCL</i>	<i>Directional</i>	<i>1963</i>	<i>Feb, 1992</i>	<i>11552</i>	<i>1440-1446</i>	<i>FWHP</i>	<i>upper</i>
Hbj-6	<i>BGFCL</i>	<i>Vertical</i>	<i>1963</i>	<i>Feb, 1992</i>	<i>5515</i>	<i>1375-1379</i>	<i>FWHP</i>	<i>upper</i>
Hbj-7	<i>BGFCL</i>	<i>Vertical</i>	<i>1963</i>	<i>April, 2000</i>	<i>10236</i>	<i>1331-1139</i>	<i>FWHP</i>	<i>upper</i>
Hbj-8	<i>BGFCL</i>	<i>Vertical</i>	<i>1963</i>	<i>May, 2000</i>	<i>5280</i>			<i>upper</i>
Hbj-9	<i>BGFCL</i>	<i>Vertical</i>	<i>1963</i>	<i>July, 1998</i>	<i>5249</i>			<i>upper</i>
Hbj-10	<i>BGFCL</i>	<i>Vertical</i>	<i>1963</i>	<i>Apr, 2000</i>	<i>5133</i>	<i>1322-1331</i>	<i>FWHP</i>	<i>upper</i>
Hbj-11	<i>BGFCL</i>	<i>Vertical</i>	<i>1963</i>	<i>February, 2008</i>	<i>10499</i>	<i>1417-1423</i>	<i>FWHP</i>	<i>upper</i>
Field : Jalalabad								
JB-1	<i>Chevron</i>		<i>1989</i>			<i>1333-1436</i>	<i>FWHP</i>	<i>BB60, BB50</i>
JB-2	<i>Chevron</i>		<i>1989</i>			<i>1279-1294</i>	<i>FWHP</i>	<i>BB50, BB60</i>

Conditions of Field and Well upto July 2023



Well	company	well type	Discovery	production start	Drilled depth (ft)	Pressure	Pressure type	Completion Zone
JB-3	<i>Chevron</i>		<i>1989</i>			<i>1332-1375</i>	<i>FWHP</i>	<i>BB50, BB60</i>
JB-4	<i>Chevron</i>		<i>1989</i>			<i>1365-1425</i>	<i>FWHP</i>	<i>BB60</i>
JB-6	<i>Chevron</i>		<i>1989</i>			<i>1354-1362</i>	<i>FWHP</i>	<i>BB60, BB50</i>
JB-7	<i>Chevron</i>		<i>1989</i>			<i>1666-1679</i>	<i>FWHP</i>	<i>BB20</i>
JB-8	<i>Chevron</i>		<i>1989</i>			<i>1362-1370</i>	<i>FWHP</i>	<i>BB50, BB60</i>
Field : Kailas Tila								
KTL-1	<i>SGFL</i>		<i>1962</i>	<i>June, 1983</i>	<i>12417</i>	<i>0</i>	<i>SIWHP</i>	
KTL-2	<i>SGFL</i>		<i>1962</i>	<i>Feb, 1995</i>		<i>2225-2230</i>	<i>FWHP</i>	
KTL-3	<i>SGFL</i>		<i>1962</i>	<i>March, 1995</i>		<i>2470-2495</i>	<i>FWHP</i>	
KTL-4	<i>SGFL</i>		<i>1962</i>	<i>March, 1997</i>		<i>2360-2410</i>	<i>FWHP</i>	
KTL-5	<i>SGFL</i>		<i>1962</i>	<i>Sep, 2006</i>		<i>0</i>	<i>SIWHP</i>	
KTL-6	<i>SGFL</i>		<i>1962</i>	<i>Aug, 2007</i>		<i>2490-2495</i>	<i>FWHP</i>	
KTL-7	<i>SGFL</i>		<i>1962</i>			<i>0</i>	<i>SIWHP</i>	
Field : Kamta								
Kamta-1	<i>BGFCL</i>	<i>Vertical</i>	<i>1981</i>	<i>july, 1982</i>	<i>11857</i>			<i>N/A</i>
Field : Meghna								
M-1	<i>BGFCL</i>	<i>Vertical</i>	<i>2004</i>	<i>july, 1990</i>	<i>10069</i>	<i>1400-1450</i>	<i>FWHP</i>	<i>A,E,F & G</i>
Field : Moulavi Bazar								
MV Bazar-2	<i>Chevron</i>		<i>1997</i>			<i>800-820</i>	<i>FWHP</i>	<i>BB70</i>
MV Bazar-3	<i>Chevron</i>		<i>1997</i>			<i>800-820</i>	<i>FWHP</i>	<i>BB70</i>
MV Bazar-4	<i>Chevron</i>		<i>1997</i>			<i>946-952</i>	<i>FWHP</i>	<i>BB20</i>
MV Bazar-5	<i>Chevron</i>		<i>1997</i>			<i>0</i>	<i>SIWHP</i>	<i>BB60</i>
MV Bazar-6	<i>Chevron</i>		<i>1997</i>			<i>822-890</i>	<i>FWHP</i>	<i>BB20</i>
MV Bazar-7	<i>Chevron</i>		<i>1997</i>			<i>844-901</i>	<i>FWHP/SIWHP</i>	<i>BB20</i>
MV Bazar-9	<i>Chevron</i>		<i>1997</i>			<i>0</i>	<i>SIWHP</i>	<i>BB46, BB48, BB60</i>
Field : Narshingdi								
N-1	<i>BGFCL</i>	<i>vertical</i>	<i>1990</i>	<i>october, 1990</i>	<i>11320</i>	<i>1143-1197</i>	<i>FWHP</i>	<i>BL</i>
N-2	<i>BGFCL</i>	<i>vertical</i>	<i>1990</i>	<i>february, 2007</i>	<i>10778</i>	<i>1015-1097</i>	<i>FWHP</i>	<i>BL</i>
Field : Rashidpur								
RP-1	<i>SGFL</i>		<i>1960</i>			<i>1290-1291</i>	<i>FWHP</i>	<i>Upper</i>
RP-2	<i>SGFL</i>		<i>1960</i>			<i>73</i>	<i>SIWHP</i>	<i>Lower</i>
RP-3	<i>SGFL</i>		<i>1960</i>			<i>1548-1568</i>	<i>FWHP</i>	<i>Lower</i>
RP-4	<i>SGFL</i>		<i>1960</i>			<i>1450-1655</i>	<i>FWHP</i>	<i>Lower</i>
RP-5	<i>SGFL</i>		<i>1960</i>			<i>2291</i>	<i>SIWHP</i>	<i>Lower</i>
RP-6	<i>SGFL</i>		<i>1960</i>			<i>870</i>	<i>SIWHP</i>	<i>A</i>
RP-7	<i>SGFL</i>		<i>1960</i>			<i>1308-1338</i>	<i>FWHP</i>	<i>Lower</i>
RP-8	<i>SGFL</i>		<i>1960</i>			<i>1600-1625</i>	<i>FWHP</i>	<i>Upper</i>

Conditions of Field and Well upto July 2023



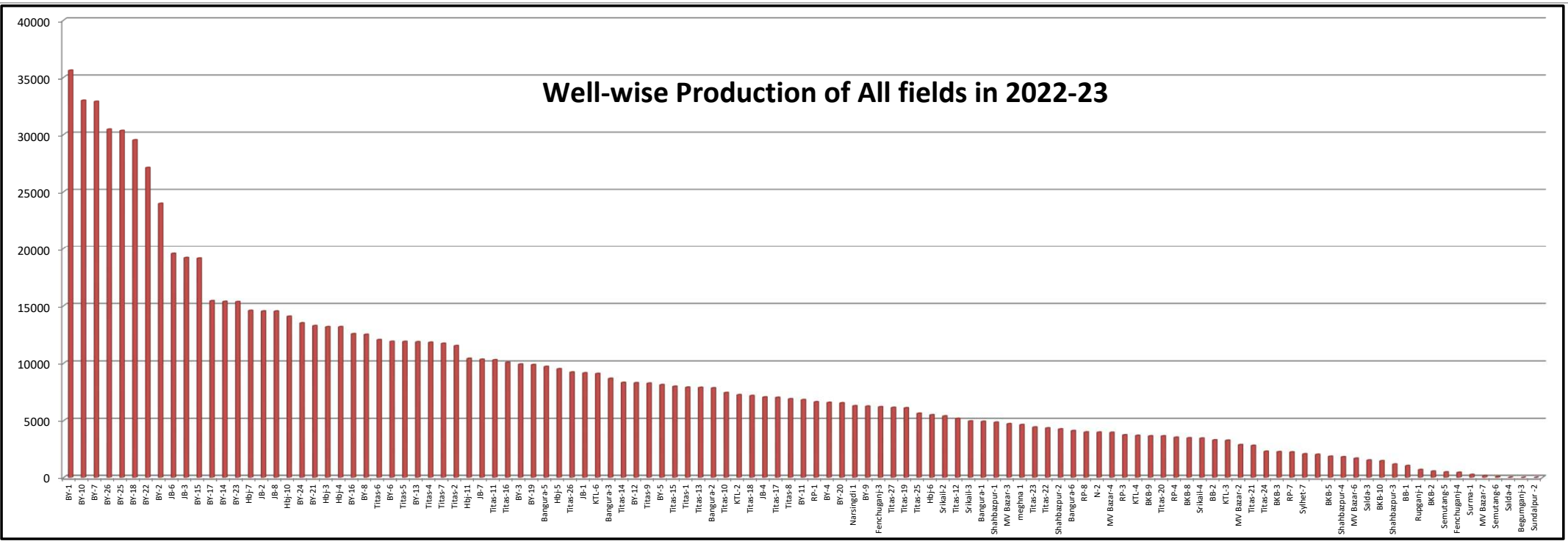
Well	company	well type	Discovery	production start	Drilled depth (ft)	Pressure	Pressure type	Completion Zone
Field :		Salda Nadi						
Salda-1	BAPEX		1995					
Salda-2	BAPEX		1995					
Salda-3	BAPEX	Directional	1995	February,2012		639-640,698-700		Upper/Lower
Salda-4	BAPEX		1995					
Field :		Sangu						
Sangu-1	BGFCL		1996					
Sangu-3z	BGFCL		1996					
Sangu-4	BGFCL		1996					
Sangu-5	BGFCL		1996					
Sangu-7	BGFCL		1996					
Sangu-8	BGFCL		1996					
Sangu-9	BGFCL		1996					
Sangu-10	BGFCL		1996					
Sangu-11	BGFCL		1996					
Field :		Semutang						
Semutang-5	BAPEX		1967			280-508		Lower Zone
Semutang-6	BAPEX		1967			750-1302		
Field :		Shahbazpur						
Shahbazpur-1	BAPEX		1995	May, 2009		2310-3543		Lower Zone
Shahbazpur-2	BAPEX		1995			3541-4133		Lower Zone
Shahbazpur-3	BAPEX		1995			4300		Upper Zone
Shahbazpur-4	BAPEX		1995			4250		Upper Zone
Field		Srikail						
Srikail-2	BAPEX		2012			990-1016		Upper & Lower D
Srikail-3	BAPEX		2012			981-1043		Upper & Lower D
Srikail-4	BAPEX		2012			1018-1068		Upper & Lower D
Field :		Sundalpur						
Sundalpur -1	BAPEX		2011					
Sundalpur -2	BAPEX		2011					
Field :		Sylhet						
Sylhet-3	SGFL		1955	Aug, 1958				
Sylhet-6	SGFL		1955	Aug, 1964		800-850	SIWHP	
Sylhet-7	SGFL		1955	Apr, 2005		1750-1820	FWHP	Lower Bokabil
Surma-1	SGFL		1955	June, 2010		230	SIWHP	C & D
Field :		Titas						

Conditions of Field and Well upto July 2023

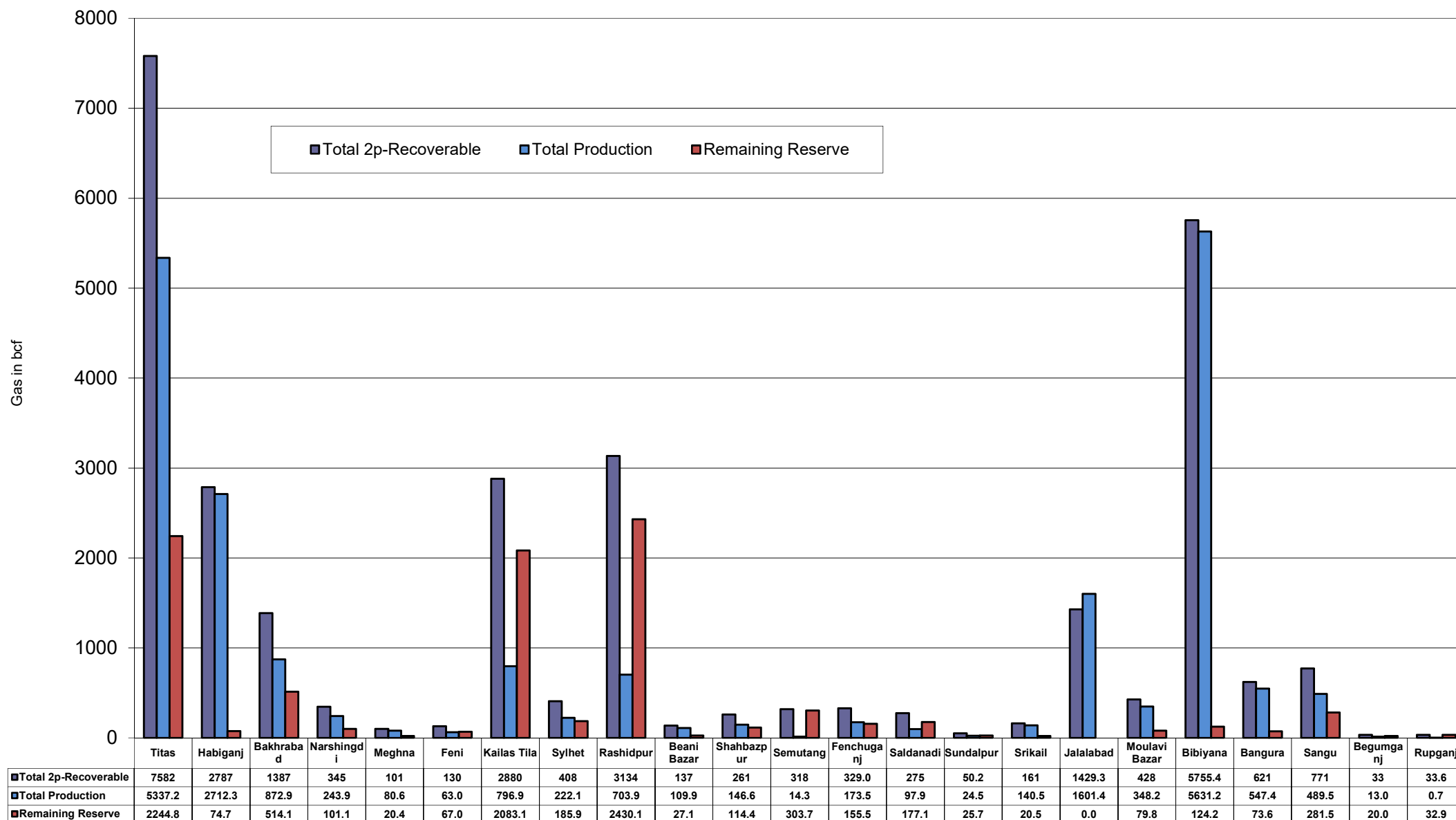


Well	company	well type	Discovery	production start	Drilled depth (ft)	Pressure	Pressure type	Completion Zone
Titas-1	BGFCL	vertical	1962	Mar,1969	12325	900-925	FWHP	A
Titas-2	BGFCL	vertical	1962	Fen,1969	10574	960-1020	FWHP	A
Titas-3	BGFCL	vertical	1962	sept,1969	9315	0	FWHP	A
Titas-4	BGFCL	vertical	1962	oct,1969	9350	1020-1070	FWHP	A
Titas-5	BGFCL	Directional	1962	jan,1981	10805	990-1035	FWHP	A
Titas-6	BGFCL	vertical	1962	Feb,1984	10072	1195-1225	FWHP	A
Titas-7	BGFCL	Directional	1962	July,1985	11006	1090-1160	FWHP	A
Titas-8	BGFCL	Directional	1962	sept,1985	11760	1000-1030	FWHP	B & C
Titas-9	BGFCL	Directional	1962	jan,1988	11893	1040-1085	FWHP	B & C
Titas-10	BGFCL	Directional	1962	may,1988	12139	1140-1180	FWHP	A
Titas-11	BGFCL	vertical	1962	Jun,1991	10462	1275-1310	FWHP	A
Titas-12	BGFCL	Directional	1962	July,2002	9873	1465-1500	FWHP	A
Titas-13	BGFCL	Directional	1962	June,2000	11487	1085-1115	FWHP	A
Titas-14	BGFCL	Directional	1962	June,2000	11004	1200-1250	FWHP	A
Titas-15	BGFCL	vertical	1962	may,2006	10446	0	FWHP	A
Titas-16	BGFCL	Directional	1962	dec,2005	11673	1205-1225	FWHP	A
Titas-17	BGFCL	vertical	1962	feb,2013	9424	1145-1175	FWHP	A
Titas-18	BGFCL	Directional	1962	august,2013	10932	1165-1190	FWHP	A
Titas-19	BGFCL	Directional	1962	may,2014	12730	1365-1415	FWHP	A
Titas-20	BGFCL	Directional	1962	oct,2013	11585	1370-1440	FWHP	A
Titas-21	BGFCL	Directional	1962	dec,2013	11631	1260-1285	FWHP	A
Titas-22	BGFCL	Directional	1962	march,2014	11926	990-1025	FWHP	A
Titas-27	BGFCL	Directional	1962	april,2014	10292	1245-1265	FWHP	A
Titas-23	BGFCL	Directional	1962	feb,2017	11988	2265-2340	FWHP	C
Titas-24	BGFCL	Directional	1962	oct,2016	12686	1120-1245	FWHP	C
Titas-25	BGFCL	vertical	1962	march,2016	11680	1300-1340	FWHP	A
Titas-26	BGFCL	Directional	1962	july,2016	12618	1840-1875	FWHP	C
Field :	Begumganj							
Begumganj-3	BAPEX		1977					
Field :	Rupganj							
Rupganj-1	BAPEX		2014			38-88		

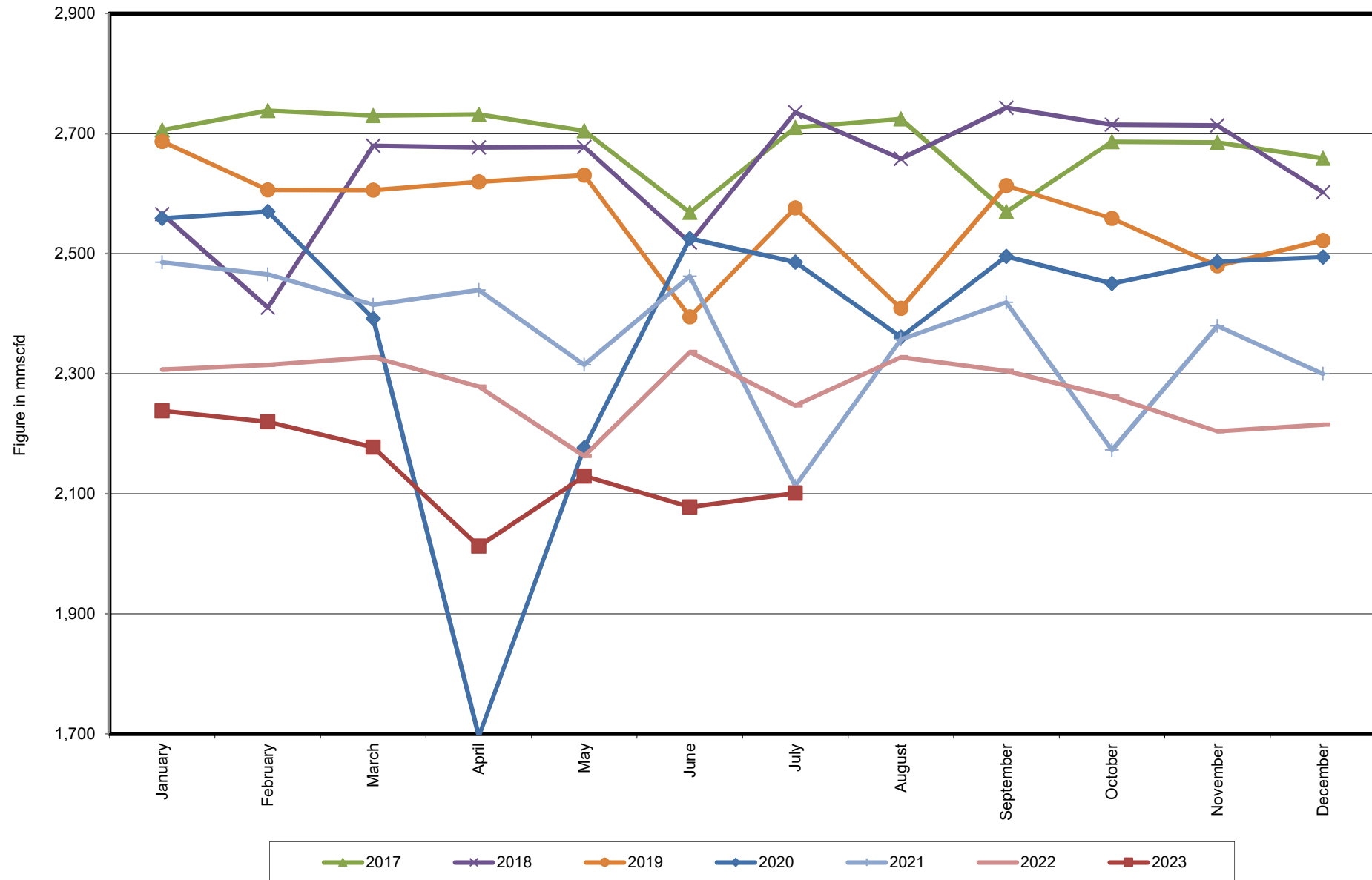
Well-wise Production of All fields in 2022-23



Reserve, Production and Remaining Reserve as of July 2023



Daily Avg. Production From January 2017 to July 2023



Field Wise Daily Avg. Production July 2023

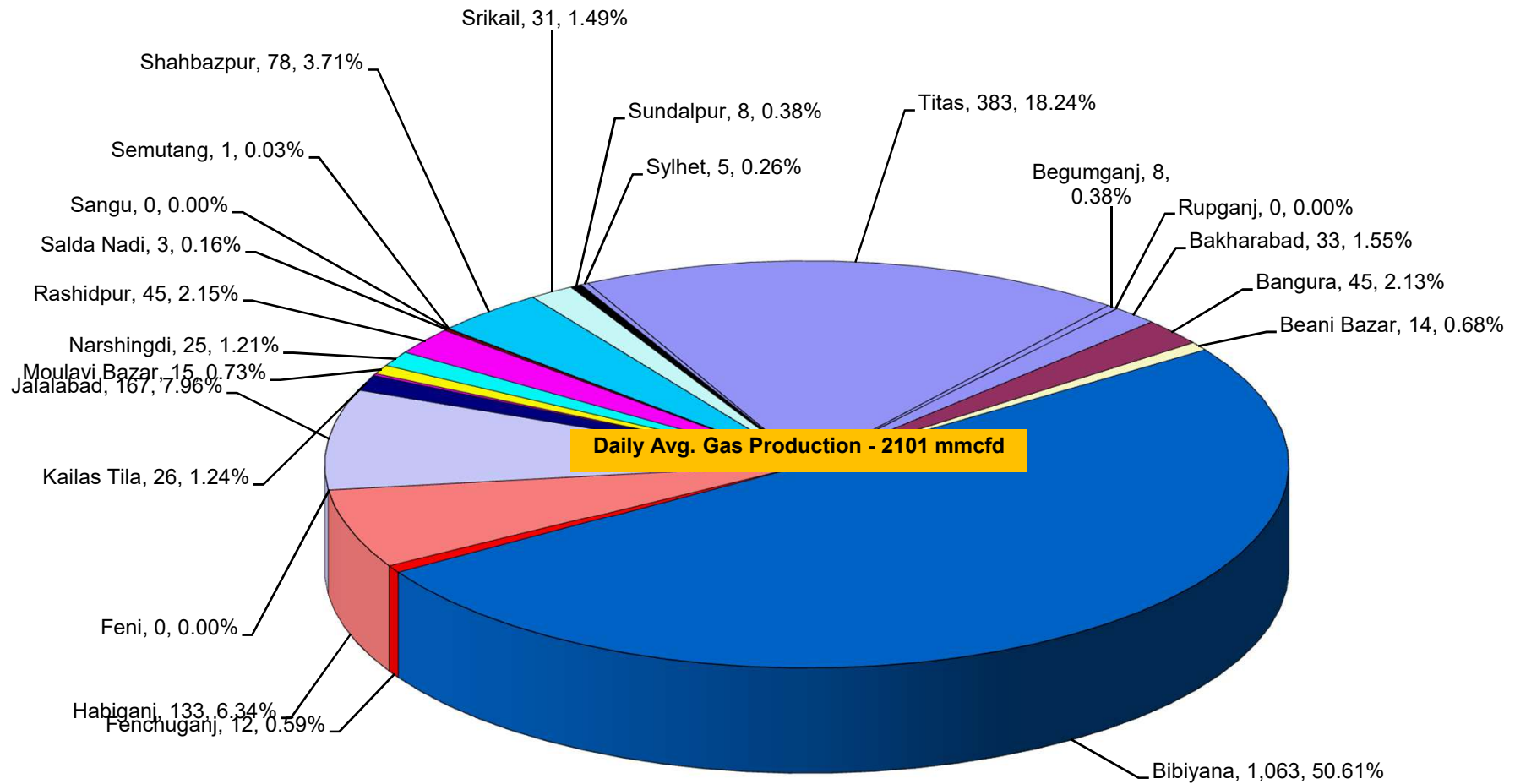
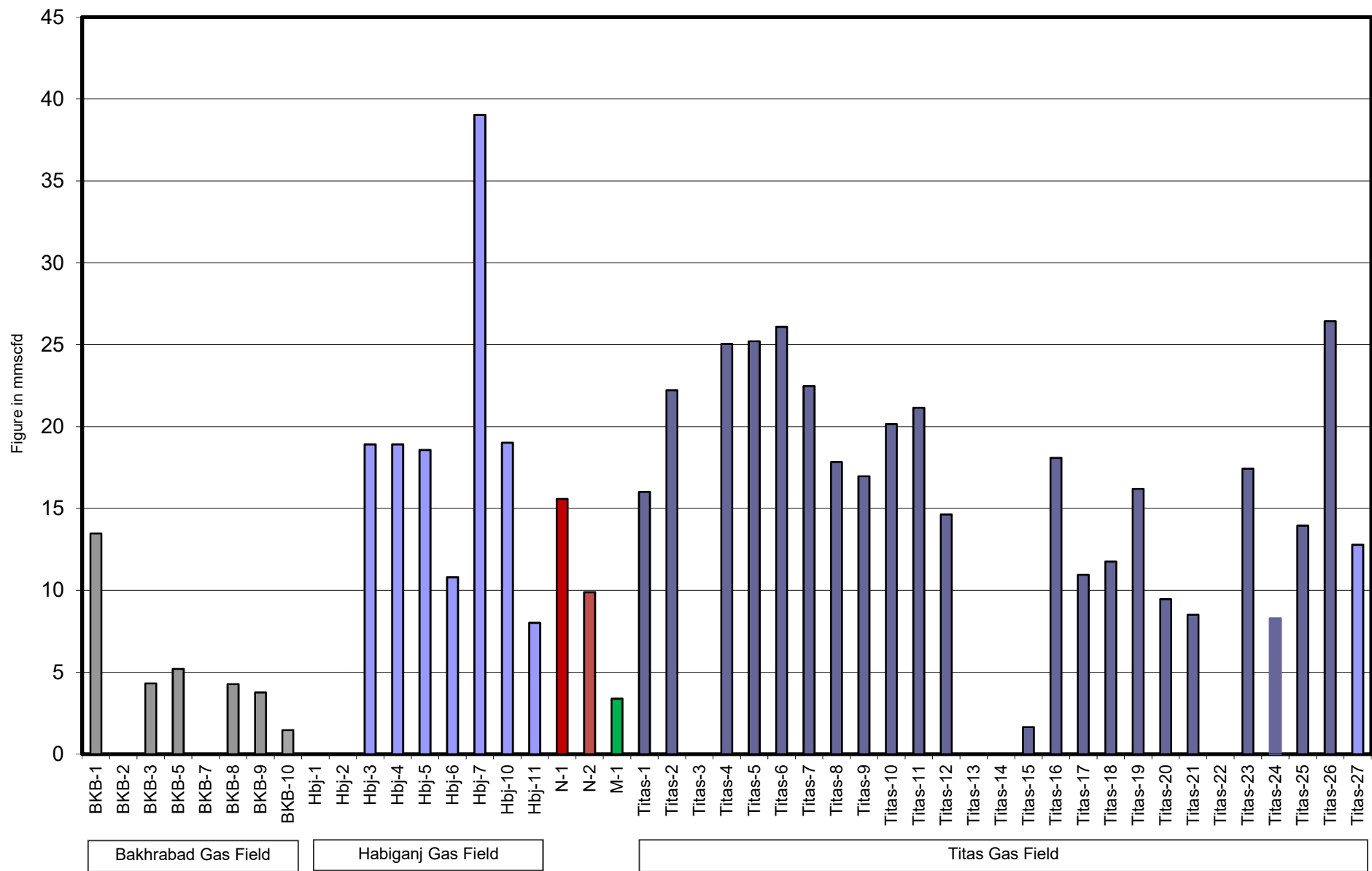
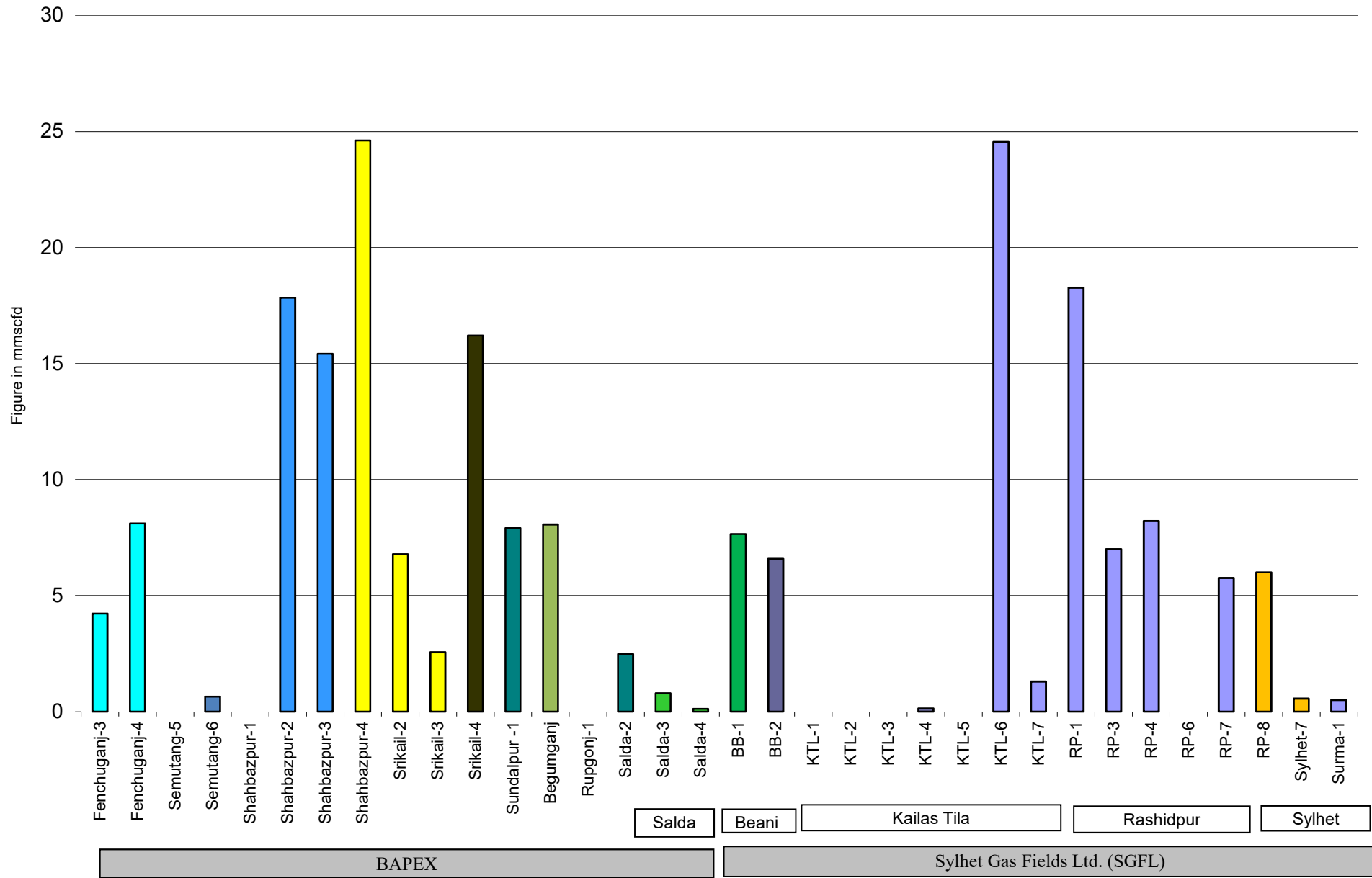


Figure in mmcf and % of total production

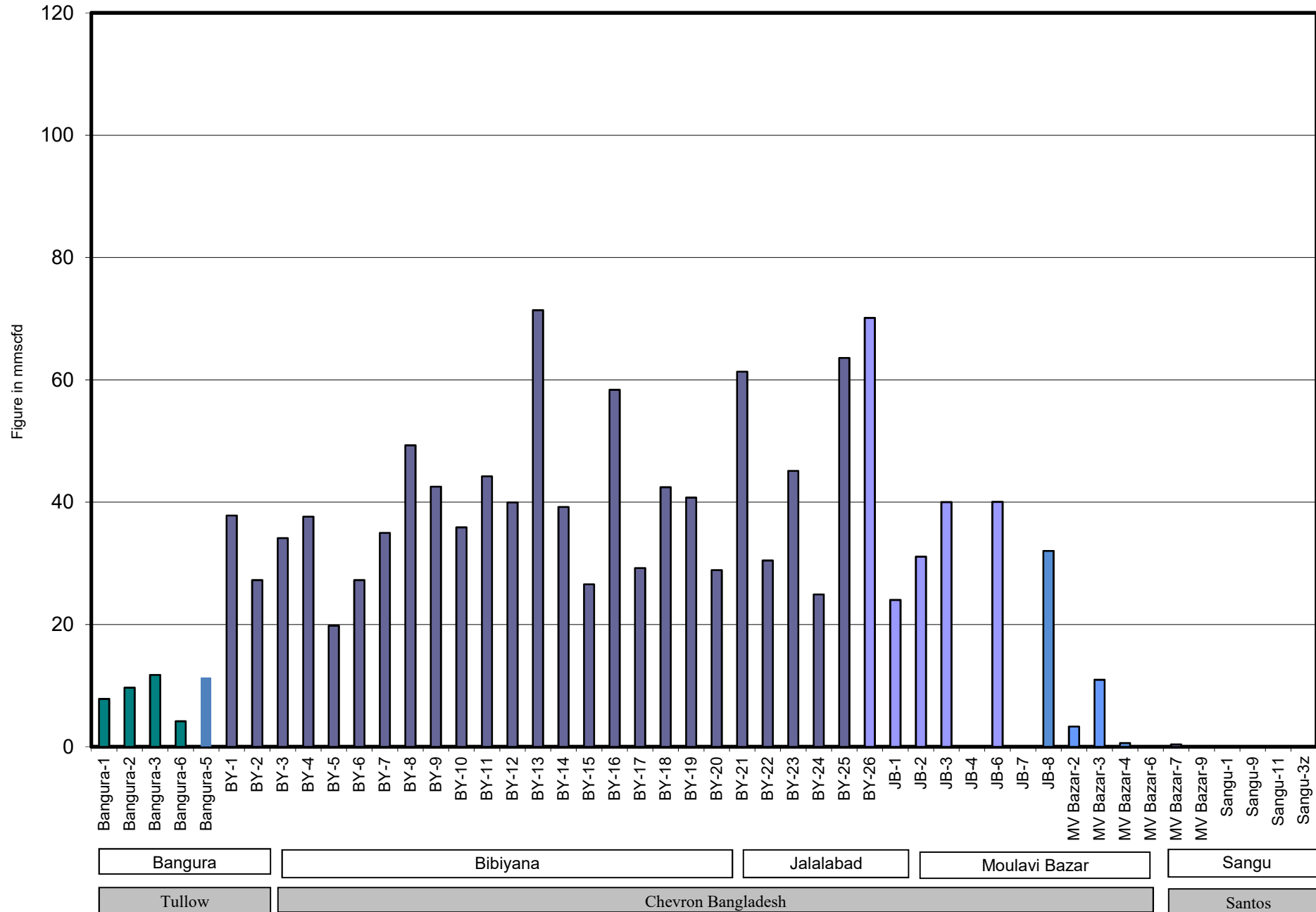
Wellwise Daily Avg. Production- BGFCL July 2023



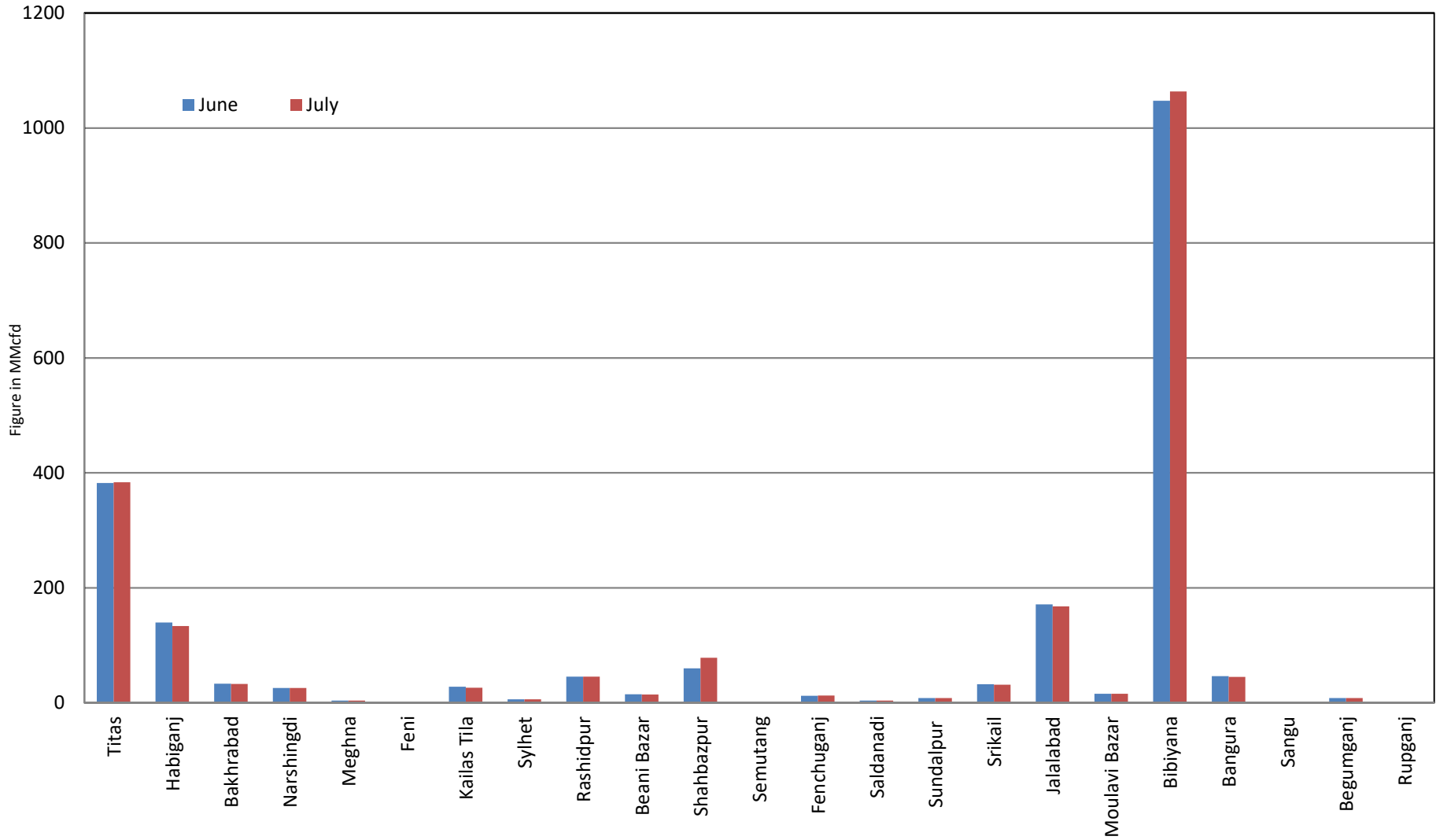
Wellwise Daily Avg. Production- Bapex and SGFL July 2023



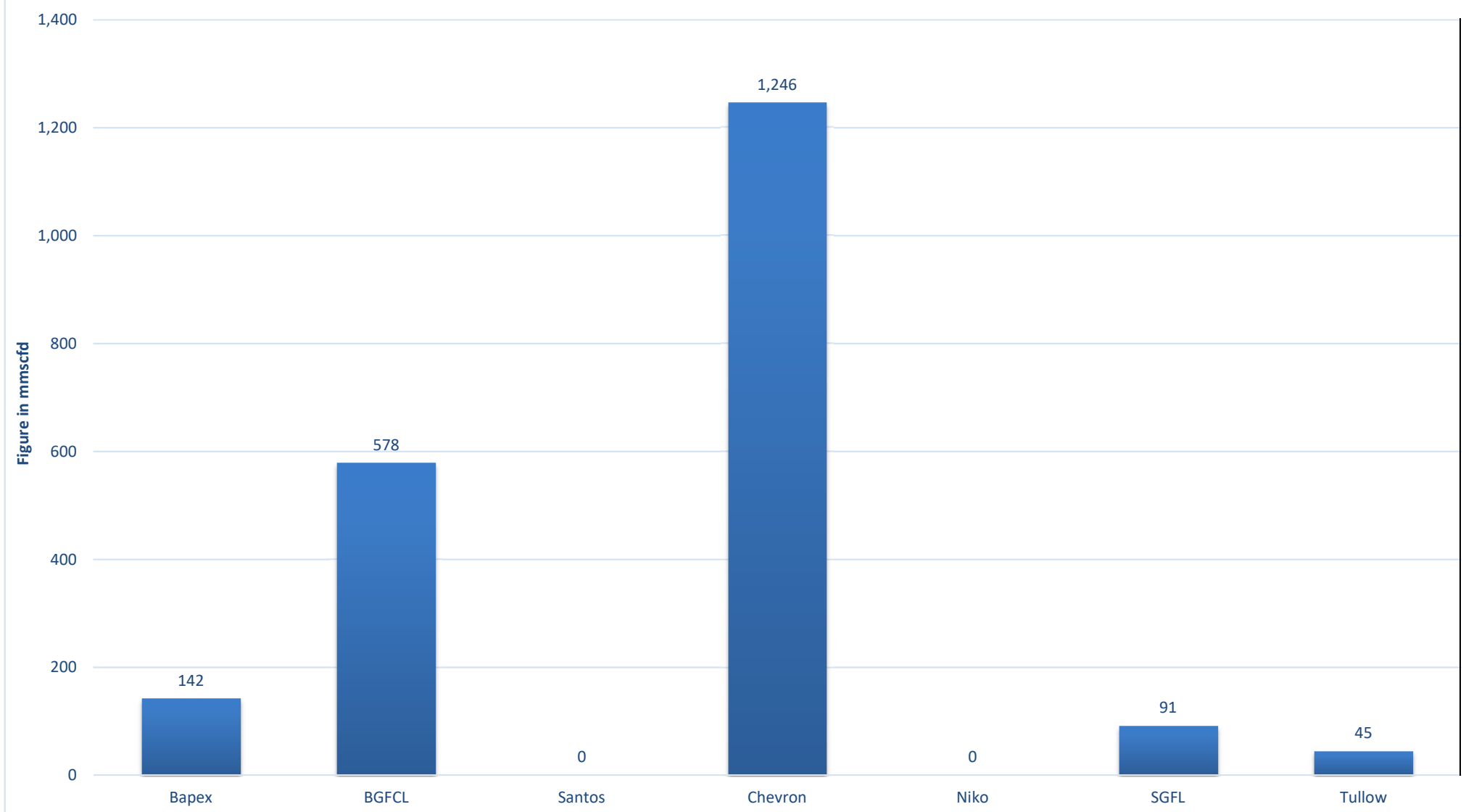
Wellwise Daily Avg. Production- IOC and JVA July 2023



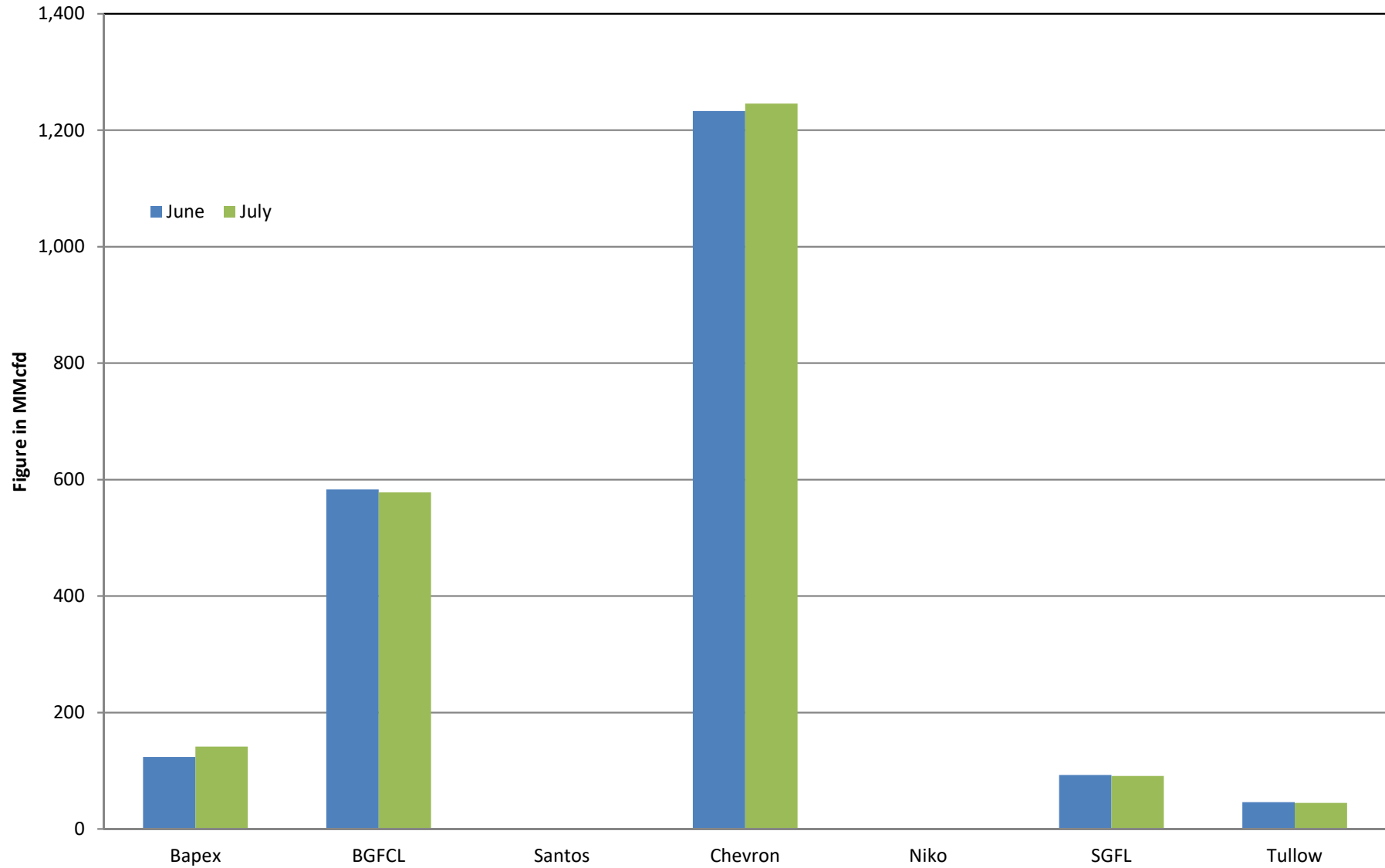
Comparison of fieldwise daily avg. Gas production between June 2023 & July 2023



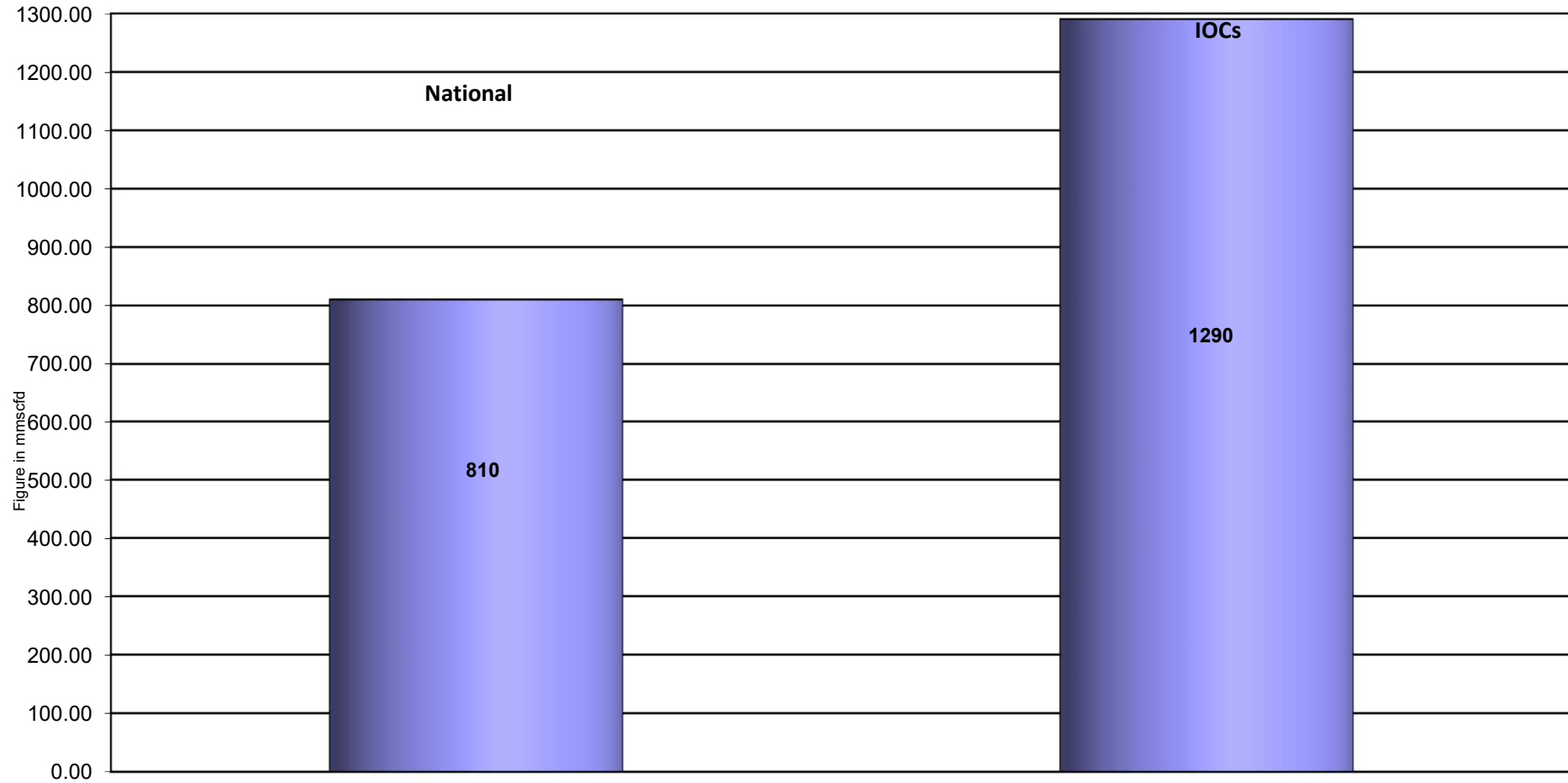
Daily Avg. Production by Operators July 2023



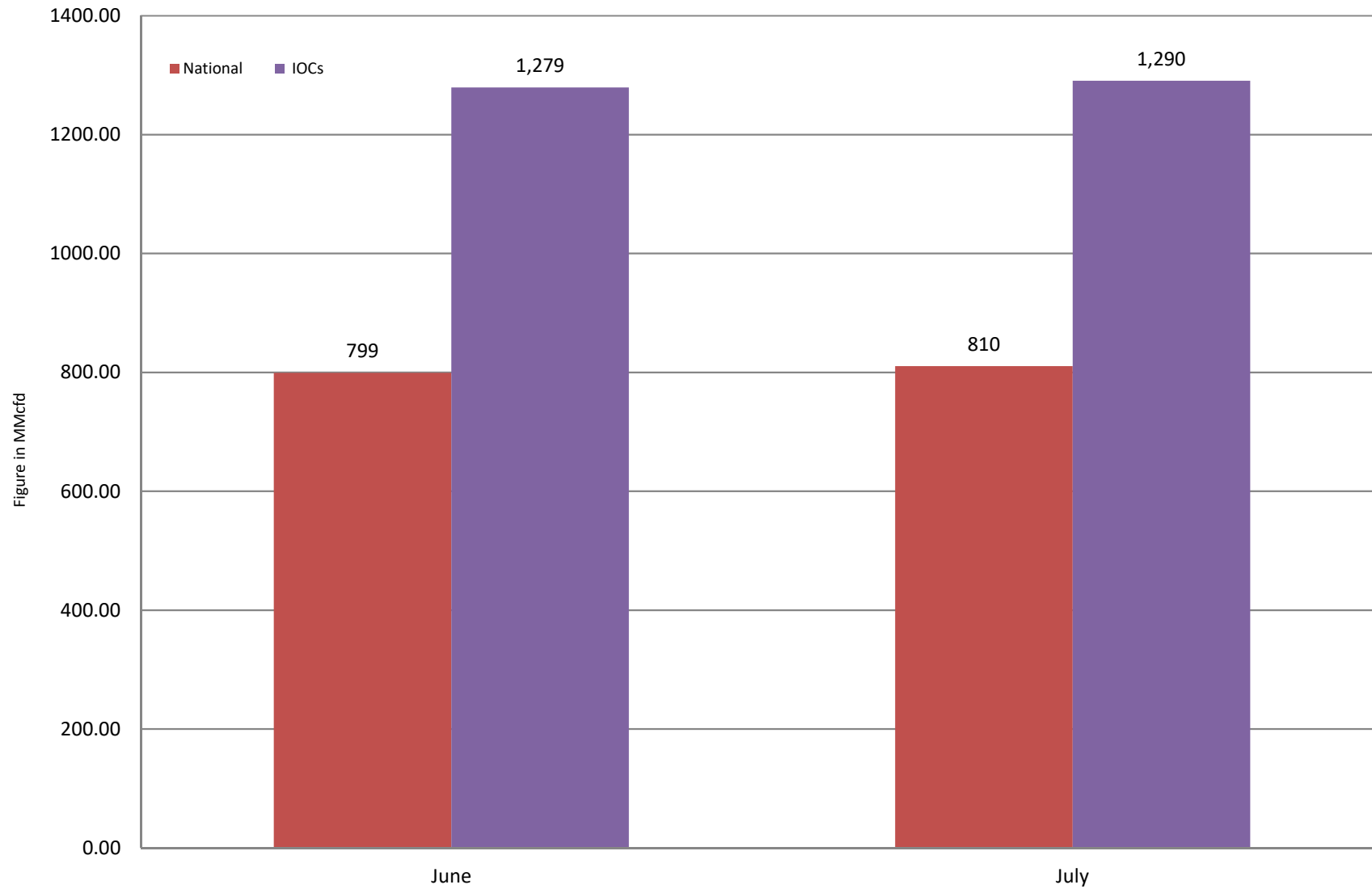
Comparison of operatorwise daily avg. Gas production between June 2023 & July 2023



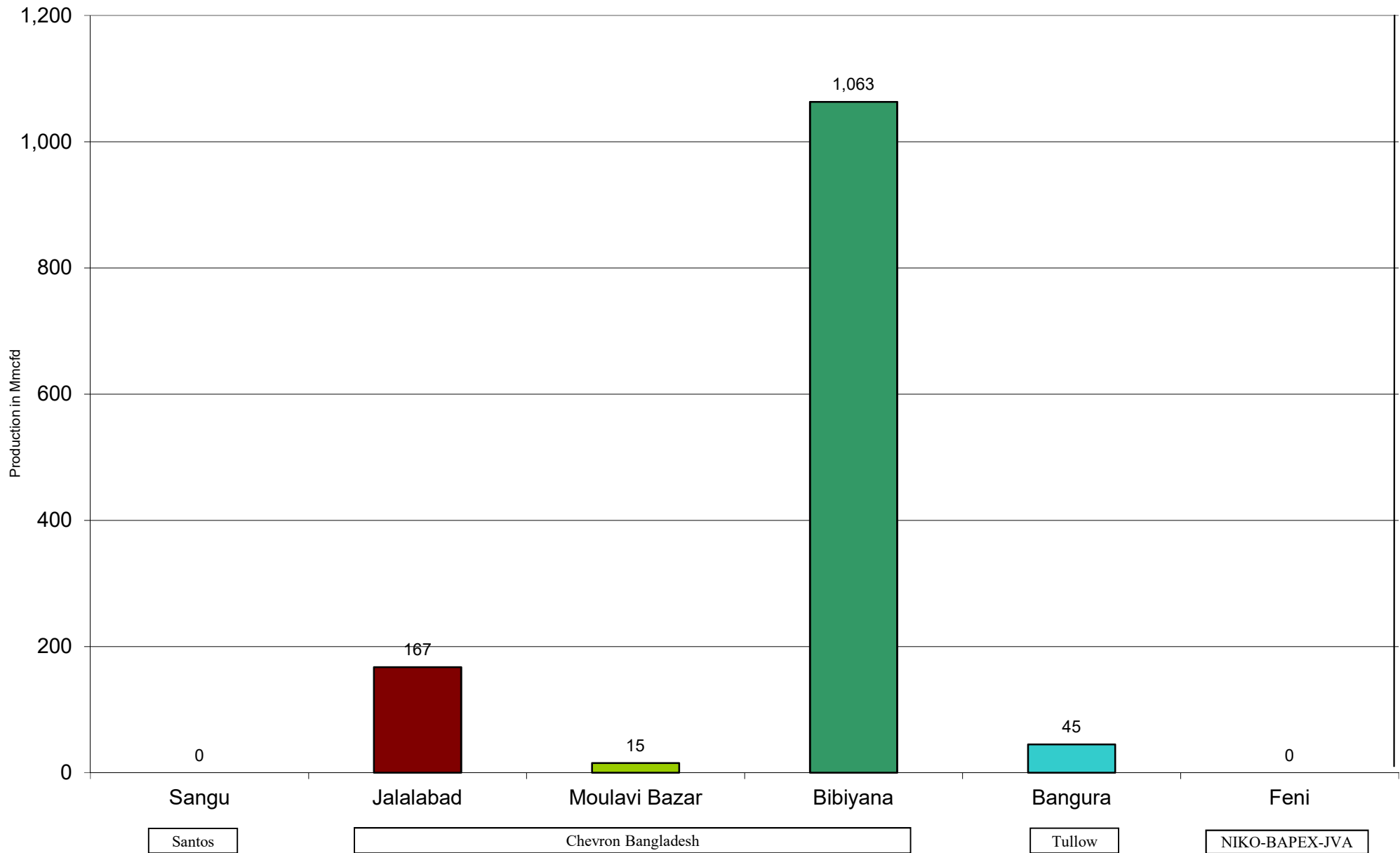
Daily Avg. Production - National Vs. IOCs July 2023



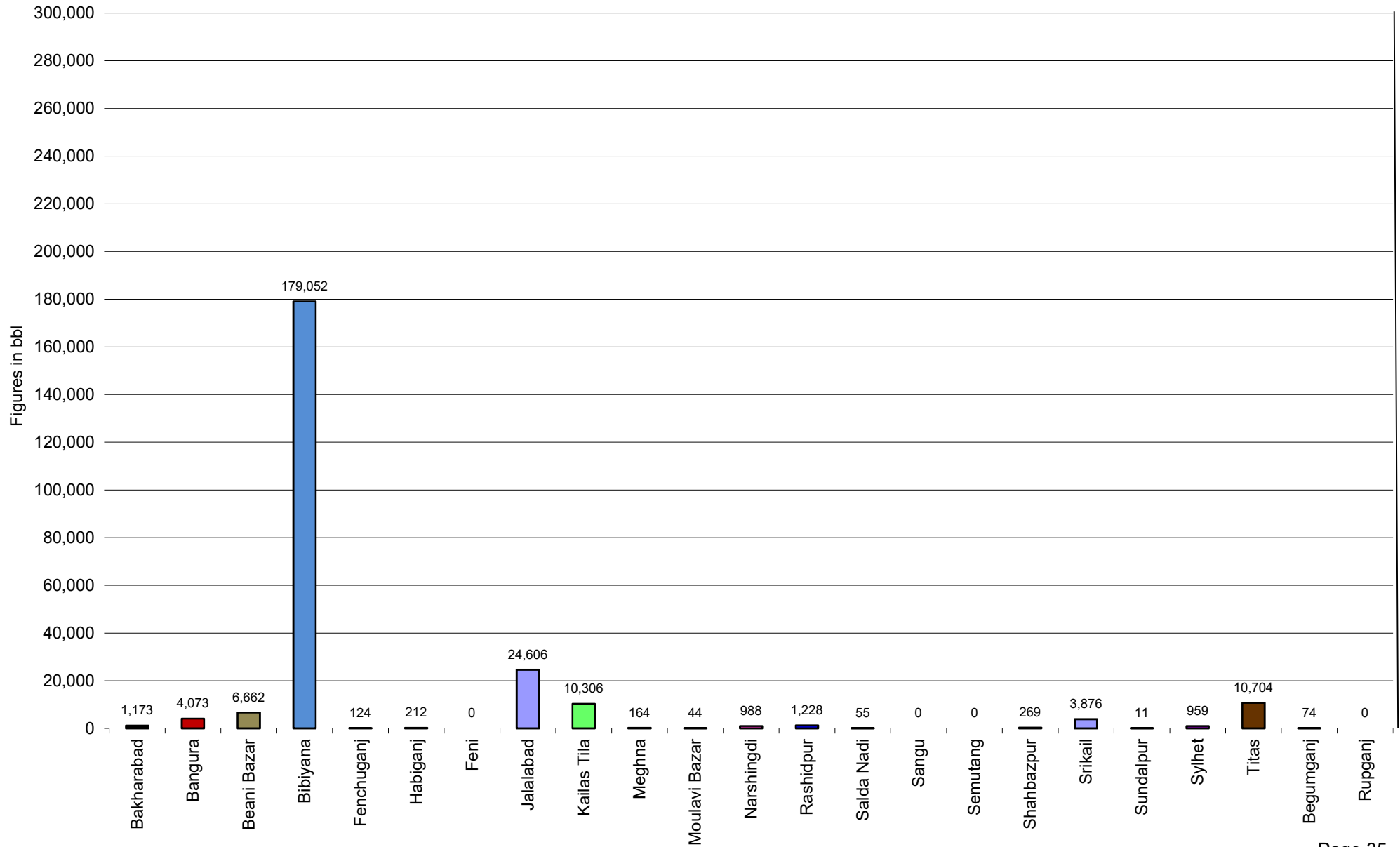
Comparison of daily avg. Gas production - National vs IOC's between June 2023 & July 2023



Daily Avg. Production - IOC and JVA July 2023



Monthly Condensate Production July 2023



Field wise Coal Reserve in Bangladesh

SI No.	Coal Basins	Proved (Mt)	Indicated (Mt)	Inferred (Mt)	Total (Mt)
1	Barapukuria	114.32	211.33	21.06+(43-64)*	346.71+(43-64)*
2	Phulbari	288	226	58	572
3	Khalashpir	-	297.57	225.92	523.49
4	Jamalganj	-	-	1053.9	1053.9
5	Dighipara	-	105	495	600
	Total	402.32	839.9	1896.88-1917.88	3139.10-3160.10

**Resources of VI Seam in second syncline areatowards SW of main basin,after Wardell Armstrong*

NOTE: Reserve Figure based on Coal Sector Development Strategy (Final), HCU,PwC

Summary of Reserve and Production of Barapukuria Coal Mine As of July 2023

Coal Initially Place (Proven + Probable)	346,710 kT	346.71 MT
Total Reserve of Seam VI	285,410 kT	285.41 MT
Recoverable from Seam VI Central part(Proven + Probable)	16,540 kT*	16.54 MT
Coal Production in July 2023	102.44 kT	0.10 MT
Cumulative Production as of July 2023	13,652 kT	13.65 MT
Remaining Reserve	2,888 kT	2.89 MT

NOTE: Reserve figure based on Mines and Minerals Development Report ,HCU PwC

*Figure from BCMCL, M/S Wardell Armstrong. According to Mines and Minerals Development Report ,HCU, PwC this figure is 64.8 Mt

Barapukuria Coal Mine-MPM and P Contract (BCMCL)
Measurement Record: Surface Belt Weigher
Measurement Period: July 2023

Day wise data	Consortium Daily Output (ton)	Consortium Cumulative Total	BCMCL Daily Output	BCMCL Cumulative Total	Remarks
1-Jul-2023	3,040.38	3,040.38	3,040.38	3,040.38	
2-Jul-2023	2,514.65	5,555.03	2,514.65	5,555.03	
3-Jul-2023	3,381.19	8,936.22	3,381.19	8,936.22	
4-Jul-2023	2,271.62	11,207.84	2,271.62	11,207.84	
5-Jul-2023	3,702.92	14,910.76	3,702.92	14,910.76	
6-Jul-2023	3,722.59	18,633.35	3,722.59	18,633.35	
7-Jul-2023	3,622.49	22,255.84	3,622.49	22,255.84	
8-Jul-2023	3,945.65	26,201.49	3,945.65	26,201.49	
9-Jul-2023	3,258.43	29,459.92	3,258.43	29,459.92	
10-Jul-2023	3,675.63	33,135.55	3,675.63	33,135.55	
11-Jul-2023	3,669.76	36,805.31	3,669.76	36,805.31	
12-Jul-2023	3,438.34	40,243.65	3,438.34	40,243.65	
13-Jul-2023	3,726.36	43,970.01	3,726.36	43,970.01	
14-Jul-2023	2,783.39	46,753.40	2,783.39	46,753.40	
15-Jul-2023	4,536.80	51,290.20	4,536.80	51,290.20	
16-Jul-2023	3,713.46	55,003.66	3,713.46	55,003.66	
17-Jul-2023	3,531.34	58,535.00	3,531.34	58,535.00	
18-Jul-2023	4,127.41	62,662.41	4,127.41	62,662.41	
19-Jul-2023	3,488.80	66,151.21	3,488.80	66,151.21	
20-Jul-2023	3,661.84	69,813.05	3,661.84	69,813.05	
21-Jul-2023	3,657.51	73,470.56	3,657.51	73,470.56	
22-Jul-2023	3,792.10	77,262.66	3,792.10	77,262.66	
23-Jul-2023	3,561.82	80,824.48	3,561.82	80,824.48	
24-Jul-2023	3,872.24	84,696.72	3,872.24	84,696.72	
25-Jul-2023	3,503.72	88,200.44	3,503.72	88,200.44	
26-Jul-2023	3,737.15	91,937.59	3,737.15	91,937.59	
27-Jul-2023	3,499.35	95,436.94	3,499.35	95,436.94	
28-Jul-2023	3,618.44	99,055.38	3,618.44	99,055.38	
29-Jul-2023	3,222.18	102,277.56	3,222.18	102,277.56	
30-Jul-2023	4,124.32	106,401.88	4,124.32	106,401.88	
31-Jul-2023	3,746.96	110,148.84	3,746.96	110,148.84	

Adjustable coal for scale calibration	-171.92
Total Output	109,976.92
Deduction for scrap June 23)	0
Less Difference in water content	7538.35
Less out of seam Dilution	0.00
Net Output	102,438.57

Barapukuria Coal Mine Daywise Data Graph for July 2023

