



# Gas and Coal Reserve & Production

January 2023



ENERGY DATA CENTER



HYDROCARBON UNIT

Energy and Mineral Resources Division

## Preface

Monthly Report on Gas and Coal Reserve & Production was prepared and published by Hydrocarbon Unit for the first time in July 2004. The present one is the issue for January 2023. In this report, Monthly Gas, Condensate, Water and Coal production of Bangladesh is reflected. Monthly import of Liquefied Natural Gas (LNG) has been included in the report as well. Moreover, Daily Average Gas Production; Field wise Daily Average Production; Well wise Daily Average Production; Comparison of Field wise Average Gas Production between present & previous month; Daily Average Production by Operator; Comparison of National and IOC Daily Average Production along with the graphical presentation have been depicted. Monthly Coal production data is also included in this report.

This report has been prepared based on the data directly collected from the Production companies of Petrobangla (BAPEX, BGFCL & SGFL) and IOC companies (Tullow & Chevron). Liquefied Natural Gas (LNG) import data is collected from RPGCL & Coal production data is collected from BCMCL.

It is expected that the report will be helpful as reference book and elements of interest for the concerned.

The report will also be available at HCU's website: [www.hcu.gov.bd](http://www.hcu.gov.bd).

Tahmina Yeasmin  
Director General (Additional Charge)  
Hydrocarbon Unit

## Executive Summary of January 2023

Total gas and condensate Production in January 2023 were 69.38 Bcf and 275433.52 Bbl. During the previous month i.e. December 2022, gas and condensate production were 68.67 Bcf and 263193 Bbl and in the same month of the previous year i.e. January 2022, total gas and condensate production were 71.51 Bcf and 217827 Bbl respectively. The National Oil Companies (NOC's) and International Oil Companies (IOC's) Produced 26.41 Bcf and 42.97 Bcf gas respectively in January 2023. During the previous month i.e. December 2022, gas production by the National Oil Companies (NOC's) and International Oil Companies (IOC's) were 25.95 Bcf and 42.72 Bcf respectively. In the month of January 2023, Bibiyana gas field Produced 35.49 Bcf gas and it ranked top among the gas producers. Average production from the field during the month of January 2023 was 1145 MMcfd. It is noted that Bibiyana gas field Produced 35.41 Bcf in December 2022.

During the month of January 2023 total production of condensate was 275433.52 Bbl compared to 263193 Bbl in the previous month i.e. December 2022. Bibiyana gas field Produced 202652 Bbl condensate and ranked top while Jalalabad ranked 2<sup>nd</sup> by producing 26767 Bbl.

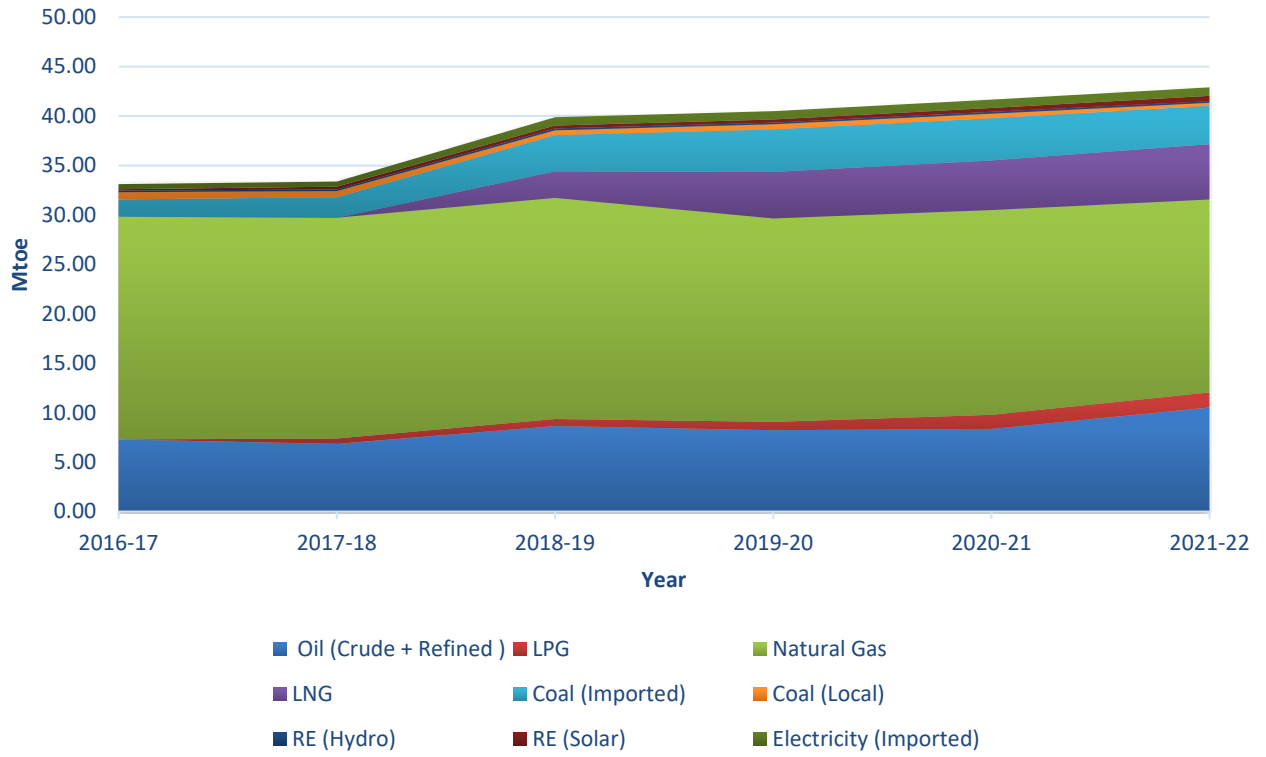
Total LNG import in January 2023 was 13.58 Bcf. As a result, Total LNG Import in this FY is 98.79 Bcf and cumulative LNG import stands on 874.22 Bcf from August 2018.

In the month of January 2023, total coal production was 57152.41 Ton. During the previous month, i.e. December 2022 total coal production was 97577.06 Ton.

## Gas Reserve & Production at a glance

Gas Initially in Place (GIIP)	:	40,092.19 Bcf
Recoverable (2P)	:	29,926.50 Bcf
Cumulative Production as of January 2023	:	20,035.03 Bcf
Remaining Reserve up to January 2023	:	9,891.47 Bcf
Gas Production in January 2023	:	69.38 Bcf
National Oil Company (NOC's) production in January 2023	:	26.41 Bcf
International Oil Company (IOC's) production in January 2023	:	42.97 Bcf
No. of National Oil Company (NOC's) in January 2023	:	3 (BGFCL, BAPEX, SGFL)
No. of International Oil Company (IOC's) in January 2023	:	2 (Chevron, Tullow)
Total gas fields of National Oil Company (NOC) in January 2023	:	21
Total gas fields of International Oil Company (IOC) in January 2023	:	5
Total gas wells of National Oil Company (NOC) in January 2023	:	115
Total gas wells of International Oil Company (IOC) in January 2023	:	60
No. of National Oil Company (NOC's) gas production well in January 2023	:	70
No. of Intl. Oil Company (IOC's) gas production well in January 2023	:	42
No. of National Oil company (NOC's) suspended well in January 2023	:	45
No. of International Oil company (IOC's) suspended well in January 2023	:	18
Total LNG Import in January 2023	:	13.58 Bcf
Total LNG Import from January 2023	:	98.79 Bcf
Cumulative LNG Import from August 2018	:	874.22 Bcf

## Energy Transition over the Years



## Table of Contents

<b>Gas Report</b>	<b>Page No.</b>
Summary	1
summary of Reserve and Production	2
Production comparison between December 2022 & January 2023	3
Production per well & production, reserve ratio	4
Monthly Production by Fields & Wells up to January 2023	5-12
Monthly Condensate Production by Fields up to January 2023	13-14
Monthly Water Production by Fields from January 2023	15-16
Conditions of Field and Well up to January 2023	17-21
<b>Chart</b>	
Well-wise Production of All fields in 2021-22	22
Reserve, Production and Remaining Reserve as of January 2023	23
Daily Average Gas Production from January 2017 to January 2023	24
Field wise Daily Average Production as of January 2023	25
Well wise Daily Average Production-BGFCL as of January 2023	26
Well wise Daily Average Production-BAPEX and SGFL, January 2023	27
Well wise Daily Average Production-IOC and JVA, January 2023	28
Field wise Avg Gas Production between December 2022 & January 2023	29
Daily Average Production by Operator, January 2023	30
Operator wise daily Avg Production between December 2022 & January 2023	31
Daily Average Production – National vs IOC's, January 2023	32
Daily Avg Gas Production- National vs IOC's between December 2022 & January 2023	33
Daily Average Production IOC's and JVA, January 2023	34
Monthly Condensate Production, January 2023	35
<b>Coal Report</b>	
Summary	36-37
Barapukuria Coal Mine-MPM and P Contract (BCMCL)	38
Barapukuria Coal Mine Day wise Data Graph for January 2023	39

## Summary of Reserve, Production & Import As of January 2023

<b>Gas Initially Place (Proven + Probable)</b>	<b>40,092.19 Bcf</b>	<b>40.09 Tcf</b>
<b>Recoverable (Proven + Probable)</b>	<b>29,926.50 Bcf</b>	<b>29.93 Tcf</b>
<b>Gas Production in January 2023</b>	<b>69.38 Bcf</b>	<b>0.07 Tcf</b>
<b>Cumulative Gas Production as of January 2023</b>	<b>20,035.03 Bcf</b>	<b>20.04 Tcf</b>
<b>Remaining Reserve</b>	<b>9,891.47 Bcf</b>	<b>9.89 Tcf</b>

*NOTE: Reserve figure based on "Updated Report on Bangladesh Gas Reserve Estimation 2010", prepared by Gustavson Associates LLC, USA*

<b>Total LNG Import in January 2023</b>	<b>13.58 Bcf</b>	<b>0.01 Tcf</b>
<b>Total LNG Import from July 2022 to January 2023</b>	<b>98.79 Bcf</b>	<b>0.10 Tcf</b>
<b>Cumulative LNG Import from August 2018</b>	<b>874.22 Bcf</b>	<b>0.87 Tcf</b>

# Summary of Reserve and Production

(As of January 2023)

Gas Bcf



SI No.	Field	2P	GIIP	2P Reserve	Gas Prod. In Jan'23	Cum. Gas Production	Remaining Reserve	Cum. Condensate Production
1	Begumganj		47.0	33.0	0.25	11.5	21.5	3
2	Shahbazpur		415.0	261.0	2.37	136.1	124.9	16
3	Semutang		654.0	318.0	0.02	14.2	303.8	5
4	Fenchuganj		483.0	329.0	0.40	171.4	157.6	121
5	Salda Nadi		393.0	275.0	0.15	97.3	177.7	60
6	Srikail*		230.0	161.0	1.27	134.5	26.5	314
7	Sundalpur *		62.2	50.2	0.24	23.0	27.2	1
8	Rupganj		48.0	33.6	0.00	0.7	32.9	1
<b>Bapex</b>			<b>2,332.2</b>	<b>1,460.8</b>	<b>4.71</b>	<b>588.6</b>	<b>872.2</b>	<b>520</b>
9	Meghna		122.0	101.0	0.10	80.0	21.0	130
10	Narshingdi		405.0	345.0	0.80	239.3	105.7	476
11	Kamta		72.0	50.0	0.00	21.1	28.9	4
12	Habiganj		3,981.0	2,787.0	4.40	2,687.1	99.9	149
13	Bakhrabad		1,825.0	1,387.0	1.07	866.9	520.1	1,077
14	Titas		9,039.0	7,582.0	12.36	5,268.1	2,313.9	5,717
<b>BGFCL</b>			<b>15,444.0</b>	<b>12,252.0</b>	<b>18.74</b>	<b>9,162.6</b>	<b>3,089.4</b>	<b>7,553</b>
15	Sangu		976.0	771.0	0.00	489.5	281.5	37
<b>Santos/Cairn</b>			<b>976.0</b>	<b>771.0</b>	<b>0.00</b>	<b>489.5</b>	<b>281.5</b>	<b>37</b>
16	Bibiyana**		8,383.0	5,755.4	35.49	5,434.1	321.3	30,928
17	Moulavi Bazar**		494.0	428.0	0.50	345.4	82.6	121
18	Jalalabad**		2,716.0	1,429.3	5.44	1,570.9	0.0	11,527
<b>Chevron</b>			<b>11,593.0</b>	<b>7,612.7</b>	<b>41.43</b>	<b>7,350.4</b>	<b>262.3</b>	<b>42,575</b>
19	Feni		185.0	130.0	0.00	63.0	67.0	110
<b>Niko</b>			<b>185.0</b>	<b>130.0</b>	<b>0.00</b>	<b>63.0</b>	<b>67.0</b>	<b>110</b>
20	Kailas Tila		3,463.0	2,880.0	0.99	791.7	2,088.3	8,431
21	Sylhet		580.0	408.0	0.17	221.1	186.9	840
22	Rashidpur		3,887.0	3,134.0	1.35	695.8	2,438.2	837
23	Chattak		677.0	474.0	0.00	25.8	448.2	4
24	Beani Bazar		225.0	137.0	0.45	107.3	29.7	1,753
<b>SGFL</b>			<b>8,832.0</b>	<b>7,033.0</b>	<b>2.96</b>	<b>1,841.9</b>	<b>5,191.1</b>	<b>11,865</b>
25	Bangura		730.0	621.0	1.55	539.0	82.0	1,394
<b>Tullow</b>			<b>730.0</b>	<b>621.0</b>	<b>1.55</b>	<b>539.0</b>	<b>82.0</b>	<b>1,394</b>
26	Kutubdia		65.0	46.0	0.00	0.0	46.0	0
<b>Total</b>			<b>40,092.2</b>	<b>29,926.5</b>	<b>69.38</b>	<b>20,035.0</b>	<b>9,891.5</b>	<b>64,055</b>

\* Preliminary reserve estimated by BAPEX

\*\* 2P reserve estimation by Petrobangla



## Production comparison between December'22 & January'23



SI No.	Field	Gas Prod. (MMcf) in Dec'22	Daily Avg. (MMcfd) in Dec'22	Gas Prod. (MMcf) in Jan'23	Daily Avg. (MMcfd) in Jan'23
1	Begumganj	251	8	252	8
2	Shahbazpur	2212	71	2375	77
3	Semutang	20	1	20	1
4	Fenchuganj	397	13	401	13
5	Salda Nadi	120	4	155	5
6	Srikail	1249	40	1274	41
7	Sundalpur	241	8	238	8
8	Rupganj	0	0	0	0
<b>Bapex</b>		<b>4489</b>	<b>145</b>	<b>4715</b>	<b>152</b>
9	Meghna	89	3	96	3
10	Narshingdi	786	25	802	26
11	Kamta	0	0	0	0
12	Habiganj	4408	142	4404	142
13	Bakhrabad	1068	34	1072	35
14	Titas	12196	393	12362	399
<b>BGFCL</b>		<b>18547</b>	<b>598</b>	<b>18735</b>	<b>604</b>
15	Sangu	0	0	0	0
<b>Santos/Cairn</b>		<b>0</b>	<b>0</b>	<b>0</b>	<b>0</b>
16	Bibiyana	35379	1141	35488	1145
17	Moulavi Bazar	493	16	495	16
18	Jalalabad	5581	180	5443	176
<b>Chevron</b>		<b>41453</b>	<b>1337</b>	<b>41426</b>	<b>1336</b>
19	Feni	0	0	0	0
<b>Niko</b>		<b>0</b>	<b>0</b>	<b>0</b>	<b>0</b>
20	Kailas Tila	1001	32	993	32
21	Sylhet	160	5	168	5
22	Rashidpur	1349	44	1353	44
23	Chattak	0	0	0	0
24	Beani Bazar	407	13	446	14
<b>SGFL</b>		<b>2917</b>	<b>94</b>	<b>2960</b>	<b>95</b>
25	Bangura	1264	41	1545	50
<b>Tullow</b>		<b>1264</b>	<b>41</b>	<b>1545</b>	<b>50</b>
26	Kutubdia	0	0	0	0
<b>Total</b>		<b>68670</b>	<b>2215</b>	<b>69381</b>	<b>2238</b>

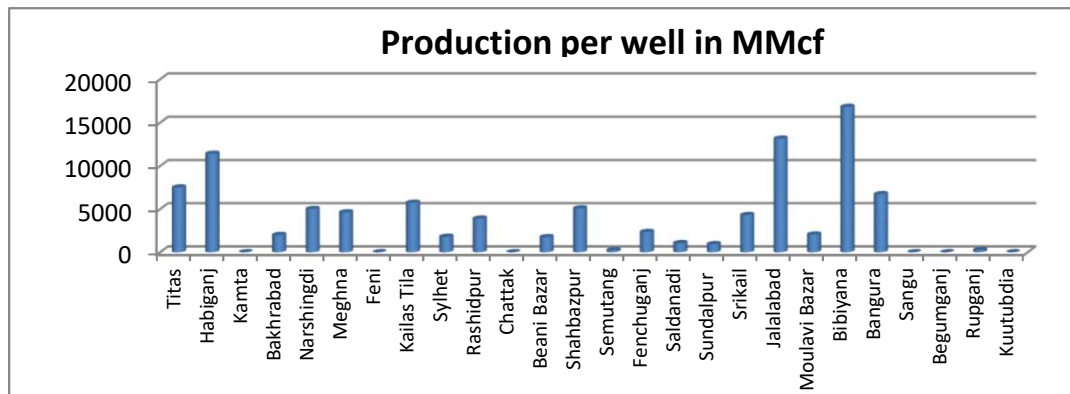
## Production per well & production reserve ratio



**HYDROCARBON UNIT**

Energy & Mineral Resources Division

	No of production well	Total 2p- Recoverable	2021-22 production	production per well mmcf	production reserve ratio
Titas	26	7582	143.51	5519.62	0.019
Habiganj	8	2787	57.2	7150.00	0.021
Kamta	0	50	0	0.00	0.000
Bakhrabad	7	1387	12.63	1804.29	0.009
Narshingdi	2	345	9.9	4950.00	0.029
Meghna	1	101	2.63	2630.00	0.026
Feni	0	130	0	0.00	0.000
Kailas Tila	4	2880	11.31	2827.50	0.004
Sylhet	1	408	2.23	2230.00	0.005
Rashidpur	5	3134	16.12	3224.00	0.005
Chattak	0	474	0	0.00	0.000
Beani Bazar	1	137	2.7	2700.00	0.020
Shahbazpur	4	261	22.81	5702.50	0.087
Semutang	2	318	0.28	140.00	0.001
Fenchuganj	2	329	5.09	2545.00	0.015
Saldanadi	2	275	1.13	565.00	0.004
Sundalpur	1	50.2	2.78	2780.00	0.055
Srikail	3	161	14.78	4926.67	0.092
Jalalabad	7	1429.3	68.77	9824.29	0.048
Moulavi Bazar	4	428	5.09	1272.50	0.012
Bibiyana	26	5755.4	439.28	16895.38	0.076
Bangura	5	621	20.69	4138.00	0.033
Sangu	0	771	0	0.00	0.000
Begumganj	1	33	3.07	0.00	0.093
Rupganj	0	33.6	0	0.00	0.000
Kuutubdia	0	46	0	0.00	0.000
<b>Total</b>	<b>112</b>	<b>29926.5</b>	<b>842</b>	<b>7517.86</b>	<b>0.028</b>



## Monthly Production by Field and Well upto January 2023



**HYDROCARBON UNIT**  
Energy & Mineral Resources Division

Figures in mmscf

Well	Jan	Feb	Mar	Apr	May	Jun	Jul	Aug	Sep	Oct	Nov	Dec	Total	Cumulative	2022	2021	2020
<b>Field : Bakharabad</b>																	
BKB-1	430												430	158,958	4,909	4,265	4,892
BKB-2	0												0	87,012	0	0	63
BKB-3	134												134	168,032	1,658	1,774	1,864
BKB-4	0												0	55,872	0	0	0
BKB-5	165												165	65,561	1,683	1,443	1,703
BKB-6	0												0	50,069	0	0	0
BKB-7	0												0	107,750	0	0	0
BKB-8	163												163	137,353	2,576	2,818	2,969
BKB-9	128												128	29,012	1,351	1,655	2,171
BKB-10	52												52	7,317	673	811	1,015
Field Total:	1,072	0	0	0	0	0	0	0	0	0	0	0	1,072	866,936	12,850	12,767	14,678
Daily Avg.(mmscfd)	35	0	0	0	0	0	0	0	0	0	0	0	35		35	35	40
<b>Field : Bangura</b>																	
Bangura-1	271												271	104,238	3,183	3,752	3,640
Bangura-2	312												312	97,569	3,671	4,395	4,340
Bangura-3	426												426	118,179	4,885	4,988	4,958
Bangura-6	205												205	21,132	2,349	2,413	3,700
Bangura-5	331												331	197,927	3,243	11,513	15,921
Field Total:	1,545	0	0	0	0	0	0	0	0	0	0	0	1,545	539,044	17,331	27,062	32,559
Daily Avg.(mmscfd)	50	0	0	0	0	0	0	0	0	0	0	0	50		47	74	89
<b>Field : Beani Bazar</b>																	
BB-1	240												240	35,918	198	0	0
BB-2	206												206	71,431	2,605	2,809	2,940
Field Total:	446	0	0	0	0	0	0	0	0	0	0	0	446	107,349	2,802	2,809	2,940
Daily Avg.(mmscfd)	14	0	0	0	0	0	0	0	0	0	0	0	14		8	8	8
<b>Field : Bibiyana</b>																	
BY-1	1,282												1,282	463,945	17,288	21,751	26,283
BY-2	927												927	324,457	8,971	9,922	12,748
BY-3	1,080												1,080	286,307	14,527	16,543	14,326
BY-4	1,153												1,153	261,529	14,165	18,221	22,661
BY-5	685												685	203,105	9,080	9,764	5,441
BY-6	861												861	266,875	13,107	14,852	7,419
BY-7	1,100												1,100	326,693	14,668	17,887	21,873
BY-8	1,619												1,619	191,603	17,706	19,722	9,776
BY-9	1,408												1,408	176,291	18,148	19,492	7,462

## Monthly Production by Field and Well upto January 2023



**HYDROCARBON UNIT**  
Energy & Mineral Resources Division

Figures in mmscf

Well	Jan	Feb	Mar	Apr	May	Jun	Jul	Aug	Sep	Oct	Nov	Dec	Total	Cumulative	2022	2021	2020		
BY-10	1,225												1,225	411,021	16,290	18,834	16,678		
BY-11	1,451												1,451	191,541	19,303	22,649	19,194		
BY-12	1,348												1,348	203,522	17,485	19,912	17,675		
BY-13	2,403												2,403	155,656	24,524	23,092	21,893		
BY-14	1,350												1,350	139,176	17,387	11,632	9,202		
BY-15	804												804	163,887	9,144	14,666	20,428		
BY-16	1,892												1,892	128,511	20,624	22,128	12,548		
BY-17	963												963	139,426	12,196	12,683	17,109		
BY-18	1,363												1,363	215,705	18,222	22,024	26,284		
BY-19	1,517												1,517	123,823	18,680	20,455	23,886		
BY-20	1,138												1,138	113,983	11,274	19,054	21,972		
BY-21	2,171												2,171	112,470	24,533	21,327	20,638		
BY-22	962												962	173,002	12,780	15,195	16,774		
BY-23	1,384												1,384	139,160	17,633	20,712	22,066		
BY-24	861												861	96,965	10,802	6,566	10,304		
BY-25	2,165												2,165	202,964	26,295	19,902	22,625		
BY-26	2,374												2,374	222,506	25,544	22,847	26,748		
Field Total:	35488	0	0	0	0	0	0	0	0	0	0	0	35,488	5,434,122	430,374	461,830	454,012		
Daily Avg.(mmscfd)	1145	0	0	0	0	0	0	0	0	0	0	0	1,145		1,179	1,265	1,240		
<b>Field : Chattak</b>																			
Ch-1	Production Suspended													25,834					
Field Total:	0													25,834					
Daily Avg.(mmscfd)	0			0			0			0			0			0			
<b>Field : Fenchuganj</b>																			
Fenchuganj-2														0	38,169	0	0	0	
Fenchuganj-3	165														165	97,687	2,431	1,029	1,547
Fenchuganj-4	236														236	35,494	3,191	2,486	3
Field Total:	401	0	0	0	0	0	0	0	0	0	0	0	401	171,350	5,622	3,515	1,550		
Daily Avg.(mmscfd)	13	0	0	0	0	0	0	0	0	0	0	0	13		15	10	4		
<b>Field : Feni</b>																			
Feni-1	Production Suspended								0	0	0						34,214		
Feni-2	Production Suspended								0	0	0						6,119		
Feni-3	Production Suspended								0	0	0						2,176		

## Monthly Production by Field and Well upto January 2023



**HYDROCARBON UNIT**  
Energy & Mineral Resources Division

Figures in mmscf

Well	Jan	Feb	Mar	Apr	May	Jun	Jul	Aug	Sep	Oct	Nov	Dec	Total	Cumulative	2022	2021	2020
Feni-4	Production Suspended								0	0				14,386			
Feni-5	Production Suspended								0	0				6,127			
<b>Field Total:</b>													<b>63,023</b>				
<b>Daily Avg.(mmscfd)</b>																	
<b>Field :</b>	<b>Habiganj</b>																
Hbj-1	0												0	287,251	92	1,276	3,651
Hbj-2	0												0	275,704	0	0	0
Hbj-3	621												621	415,580	8,119	8,784	9,952
Hbj-4	621												621	410,038	8,119	8,784	9,952
Hbj-5	653												653	332,377	8,073	8,381	8,620
Hbj-6	405												405	183,893	5,165	5,461	5,305
Hbj-7	1,208												1,208	310,618	14,215	14,133	13,671
Hbj-8	0												0	11,023	0	0	0
Hbj-9	0												0	52,652	0	0	0
Hbj-10	619												619	290,046	7,250	8,660	9,961
Hbj-11	278												278	117,920	3,430	4,890	6,094
<b>Field Total:</b>	<b>4,404</b>	<b>0</b>	<b>0</b>	<b>0</b>	<b>0</b>	<b>0</b>	<b>0</b>	<b>0</b>	<b>0</b>	<b>0</b>	<b>0</b>	<b>0</b>	<b>4,404</b>	<b>2,687,100</b>	<b>54,462</b>	<b>60,368</b>	<b>67,206</b>
<b>Daily Avg.(mmscfd)</b>	142	0	0	0	0	0	0	0	0	0	0	0	142		149	165	184
<b>Field :</b>	<b>Jalalabad</b>																
JB-1	776												776	282,860	9,072	8,050	9,224
JB-2	985												985	326,303	11,539	10,135	11,644
JB-3	1,297												1,297	402,172	15,205	13,420	15,132
JB-4	1												1	303,143	4,006	7,176	7,355
JB-6	1,332												1,332	121,053	15,513	13,697	14,814
JB-7	0												0	43,512	1	6	2,718
JB-8	1,052												1,052	91,863	12,218	10,735	11,643
<b>Field Total:</b>	<b>5,443</b>	<b>0</b>	<b>0</b>	<b>0</b>	<b>0</b>	<b>0</b>	<b>0</b>	<b>0</b>	<b>0</b>	<b>0</b>	<b>0</b>	<b>0</b>	<b>5,443</b>	<b>1,570,906</b>	<b>67,554</b>	<b>63,219</b>	<b>72,531</b>
<b>Daily Avg.(mmscfd)</b>	176	0	0	0	0	0	0	0	0	0	0	0	176		185	173	198
<b>Field :</b>	<b>Kailas Tila</b>																
KTL-1	0												0	205,181	0	0	0

## Monthly Production by Field and Well upto January 2023



**HYDROCARBON UNIT**  
Energy & Mineral Resources Division

Figures in mmscf

Well	Jan	Feb	Mar	Apr	May	Jun	Jul	Aug	Sep	Oct	Nov	Dec	Total	Cumulative	2022	2021	2020
KTL-2	0												0	192,972	0	1,368	6,291
KTL-3	0												0	140,672	0	0	269
KTL-4	126												126	104,267	1,507	1,761	2,139
KTL-5	0												0	17,923	0	0	0
KTL-6	755												755	128,146	9,051	8,960	9,249
KTL-7	111												111	2,562	1,635	0	0
Field Total:	993	0	0	0	0	0	0	0	0	0	0	0	993	791,724	12,193	12,089	17,949
Daily Avg.(mmscfd)	32	0	0	0	0	0	0	0	0	0	0	0	32		33	33	49
<b>Field : Kamta</b>																	
Kamta-1	Production Suspended													21,139			
Field Total:			0	0	0	0	0	0	0	0	0	0		21,139			
Daily Avg.(mmscfd)																	
<b>Field : Meghna</b>																	
M-1	96												96	79,966	1,893	2,602	2,945
Field Total:	96	0	0	0	0	0	0	0	0	0	0	0	96	79,966	1,893	2,602	2,945
Daily Avg.(mmscfd)	3	0	0	0	0	0	0	0	0	0	0	0	3		5	7	8
<b>Field : Moulavi Bazar</b>																	
MV Bazar-2	46												46	57,269	833	330	1,217
MV Bazar-3	185												185	169,913	3,327	2,460	3,848
MV Bazar-4	30												30	60,338	228	624	266
MV Bazar-5	0													66			
MV Bazar-6	234												234	21,815	1,616	1,053	529
MV Bazar-7													0	5,648	0	0	0
MV Bazar-9													0	30,337	0	0	0
Field Total:	495	0	0	0	0	0	0	0	0	0	0	0	495	345,385	6,005	4,466	5,859
Daily Avg.(mmscfd)	16	0	0	0	0	0	0	0	0	0	0	0	16		16	12	16
<b>Field : Narshingdi</b>																	
N-1	485												485	168,344	5,828	5,812	5,960
N-2	317												317	70,998	3,917	4,001	3,661
Field Total:	802	0	0	0	0	0	0	0	0	0	0	0	802	239,342	9,746	9,814	9,621

## Monthly Production by Field and Well upto January 2023



**HYDROCARBON UNIT**  
Energy & Mineral Resources Division

Figures in mmscf

Well	Jan	Feb	Mar	Apr	May	Jun	Jul	Aug	Sep	Oct	Nov	Dec	Total	Cumulative	2022	2021	2020
<b>Daily Avg.(mmscfd)</b>	26	0	0	0	0	0	0	0	0	0	0	0	26		27	27	26
<b>Field : Rashidpur</b>																	
RP-1	565												565	193,555	6,619	6,557	6,447
RP-2	0												0	82,474	0	0	0
RP-3	217												217	142,758	2,555	2,444	2,891
RP-4	239												239	139,108	2,765	2,668	2,655
RP-5	0												0	25,647	0	0	0
RP-6	0												0	9,983	0	0	0
RP-7	145												145	71,206	1,688	1,634	1,628
RP-8	186												186	31,099	2,339	2,798	3,228
<b>Field Total:</b>	<b>1,353</b>	<b>0</b>	<b>0</b>	<b>0</b>	<b>0</b>	<b>0</b>	<b>0</b>	<b>0</b>	<b>0</b>	<b>0</b>	<b>0</b>	<b>0</b>	<b>1,353</b>	<b>695,830</b>	<b>15,965</b>	<b>16,099</b>	<b>16,849</b>
<b>Daily Avg.(mmscfd)</b>	44	0	0	0	0	0	0	0	0	0	0	0	44		44	44	46
<b>Field : Salda Nadi</b>																	
Salda-1													0	36,904	0	0	0
Salda-2	87												87	29,306	724	0	0
Salda-3	57												57	30,607	563	886	1,712
Salda-4	11												11	460	75	136	92
<b>Field Total:</b>	<b>155</b>	<b>0</b>	<b>0</b>	<b>0</b>	<b>0</b>	<b>0</b>	<b>0</b>	<b>0</b>	<b>0</b>	<b>0</b>	<b>0</b>	<b>0</b>	<b>155</b>	<b>97,277</b>	<b>1,361</b>	<b>1,022</b>	<b>1,804</b>
<b>Daily Avg.(mmscfd)</b>	5	0	0	0	0	0	0	0	0	0	0	0	5		4	3	5
<b>Field : Sangu</b>																	
Sangu-1	0	0	0	0	0	0	0	0	0	0	0	0	0	116,191	0	0	0
Sangu-3z	0	0	0	0	0	0	0	0	0	0	0	0	0	131,796	0	0	0
Sangu-4	0	0	0	0	0	0	0	0	0	0	0	0		87,280			
Sangu-5	0	0	0	0	0	0	0	0	0	0	0	0		61,674			
Sangu-7	0	0	0	0	0	0	0	0	0	0	0	0		18,202			
Sangu-8	0	0	0	0	0	0	0	0	0	0	0	0		37,619			
Sangu-9	0	0	0	0	0	0	0	0	0	0	0	0	0	30,638	0	0	0
Sangu-10	Production Suspended						0	0	0	0	0	0					
Sangu-11	0	0	0	0	0	0	0	0	0	0	0	0	0	6,067	0	0	0
<b>Field Total:</b>	<b>0</b>	<b>0</b>	<b>0</b>	<b>0</b>	<b>0</b>	<b>0</b>	<b>0</b>	<b>0</b>	<b>0</b>	<b>0</b>	<b>0</b>	<b>0</b>	<b>0</b>	<b>489,467</b>	<b>0</b>	<b>0</b>	<b>0</b>

## Monthly Production by Field and Well upto January 2023



**HYDROCARBON UNIT**  
Energy & Mineral Resources Division

Figures in mmscf

Well	Jan	Feb	Mar	Apr	May	Jun	Jul	Aug	Sep	Oct	Nov	Dec	Total	Cumulative	2022	2021	2020
<b>Daily Avg.(mmscfd)</b>	0	0	0	0	0	0	0	0	0	0	0	0	0		0	0	0
<b>Field : Semutang</b>																	
Semutang-5													0	12,311	0	3	104
Semutang-6	20												20	1,892	261	290	204
<b>Field Total:</b>	<b>20</b>	<b>0</b>	<b>0</b>	<b>0</b>	<b>0</b>	<b>0</b>	<b>0</b>	<b>0</b>	<b>0</b>	<b>0</b>	<b>0</b>	<b>0</b>	<b>20</b>	<b>14,204</b>	<b>261</b>	<b>293</b>	<b>308</b>
<b>Daily Avg.(mmscfd)</b>	1	0	0	0	0	0	0	0	0	0	0	0	1		1	1	1
<b>Field : Shahbazpur</b>																	
Shahbazpur-1	182												182	22,850	134	48	254
Shahbazpur-2	545												545	35,990	6,906	6,132	5,129
Shahbazpur-3	442												442	39,920	6,663	7,520	6,301
Shahbazpur-4	674												674	35,182	7,381	5,987	2,374
East 1	532												532	2,180	1,648	0	0
<b>Field Total:</b>	<b>2,375</b>	<b>0</b>	<b>0</b>	<b>0</b>	<b>0</b>	<b>0</b>	<b>0</b>	<b>0</b>	<b>0</b>	<b>0</b>	<b>0</b>	<b>0</b>	<b>2,375</b>	<b>136,121</b>	<b>21,083</b>	<b>19,686</b>	<b>14,058</b>
<b>Daily Avg.(mmscfd)</b>	77	0	0	0	0	0	0	0	0	0	0	0	77		58	54	38
<b>Field : Srikail</b>																	
Srikail-2	276												276	54,264	3,326	2,981	4,450
Srikail-3	190												190	46,515	2,266	1,880	3,360
Srikail-4	614												614	29,056	7,102	7,309	2,561
East 1	194												194	4,632	2,584	1,854	
<b>Field Total:</b>	<b>1,274</b>	<b>0</b>	<b>0</b>	<b>0</b>	<b>0</b>	<b>0</b>	<b>0</b>	<b>0</b>	<b>0</b>	<b>0</b>	<b>0</b>	<b>0</b>	<b>1,274</b>	<b>134,468</b>	<b>15,279</b>	<b>14,024</b>	<b>10,371</b>
<b>Daily Avg.(mmscfd)</b>	41	0	0	0	0	0	0	0	0	0	0	0	41		42	33	28
<b>Field : Sundalpur</b>																	
Sundalpur -1													0	9,809	0	0	0
Sundalpur -2	238												238	13,201	2,813	2,752	2,649
<b>Field Total:</b>	<b>238</b>	<b>0</b>	<b>0</b>	<b>0</b>	<b>0</b>	<b>0</b>	<b>0</b>	<b>0</b>	<b>0</b>	<b>0</b>	<b>0</b>	<b>0</b>	<b>238</b>	<b>23,010</b>	<b>2,813</b>	<b>2,752</b>	<b>2,649</b>
<b>Daily Avg.(mmscfd)</b>	8	0	0	0	0	0	0	0	0	0	0	0	8		8	8	7
<b>Field : Sylhet</b>																	
Sylhet-3	Production Suspended												89,032				
Sylhet-6	Production Suspended												91,748				



## Monthly Production by Field and Well upto January 2023



**HYDROCARBON UNIT**  
Energy & Mineral Resources Division

Figures in mmscf

Well	Jan	Feb	Mar	Apr	May	Jun	Jul	Aug	Sep	Oct	Nov	Dec	Total	Cumulative	2022	2021	2020
Sylhet-7	22												22	31,277	307	1,207	1,377
Surma-1	26												26	7,057	503	0	0
Sylhet-9	120												120	2,019	1,381	518	
<b>Field Total:</b>	<b>168</b>	<b>0</b>	<b>0</b>	<b>0</b>	<b>0</b>	<b>0</b>	<b>0</b>	<b>0</b>	<b>0</b>	<b>0</b>	<b>0</b>	<b>0</b>	<b>168</b>	<b>221,133</b>	<b>2,192</b>	<b>1,207</b>	<b>1,377</b>
<b>Daily Avg.(mmscfd)</b>	<b>5</b>	<b>0</b>	<b>0</b>	<b>0</b>	<b>0</b>	<b>0</b>	<b>0</b>	<b>0</b>	<b>0</b>	<b>0</b>	<b>0</b>	<b>0</b>	<b>5</b>		<b>6</b>	<b>3</b>	<b>4</b>
<b>Field :</b>	<b>Titas</b>																
Titas-1	511												511	464,290	5,838	6,039	5,626
Titas-2	718												718	474,103	8,452	9,335	9,217
Titas-3	0												0	314,888	0	0	0
Titas-4	780												780	410,273	9,122	9,551	9,356
Titas-5	817												817	469,974	9,770	9,889	9,526
Titas-6	817												817	402,792	10,079	9,754	9,401
Titas-7	711												711	370,444	8,312	4,528	1,784
Titas-8	565												565	297,385	6,649	6,569	5,115
Titas-9	521												521	301,765	6,380	6,404	5,770
Titas-10	652												652	230,428	7,998	7,512	7,397
Titas-11	702												702	281,959	8,511	7,571	9,440
Titas-12	462												462	121,459	5,192	4,363	5,428
Titas-13	0												0	194,541	0	0	0
Titas-14	0												0	163,216	0	2,195	4,966
Titas-15	265												265	154,910	2,653	3,194	4,306
Titas-16	585												585	173,931	6,781	6,637	6,373
Titas-17	380												380	59,647	4,551	4,450	4,969
Titas-18	465												465	60,069	5,227	5,093	5,166
Titas-19	527												527	49,799	5,690	5,187	4,754
Titas-20	306												306	34,194	3,622	4,031	3,817
Titas-21	279												279	21,834	3,375	3,020	2,892
Titas-22	0												0	30,349	0	362	2,436
Titas-27	487												487	51,581	6,002	5,418	5,233
Titas-23	543												543	33,149	5,880	6,314	5,328
Titas-24	0												0	9,481	462	0	1,238
Titas-25	478												478	35,869	5,889	5,439	5,424

## Monthly Production by Field and Well upto January 2023



**HYDROCARBON UNIT**  
Energy & Mineral Resources Division

Figures in mmscf

Well	Jan	Feb	Mar	Apr	May	Jun	Jul	Aug	Sep	Oct	Nov	Dec	Total	Cumulative	2022	2021	2020
Titas-26	789												789	55,787	8,956	9,188	8,961
<b>Field Total:</b>	<b>12,362</b>	<b>0</b>	<b>0</b>	<b>0</b>	<b>0</b>	<b>0</b>	<b>0</b>	<b>0</b>	<b>0</b>	<b>0</b>	<b>0</b>	<b>0</b>	<b>12,362</b>	<b>5,268,119</b>	<b>145,392</b>	<b>142,044</b>	<b>143,923</b>
Daily Avg.(mmscfd)	399	0	0	0	0	0	0	0	0	0	0	0	399		398	389	393
<b>Field :</b>	<b>Begumganj</b>																
Begumganj-3	252												252	11,506	2,976	2,719	1,940
<b>Field Total:</b>	<b>252</b>	<b>0</b>	<b>0</b>	<b>0</b>	<b>0</b>	<b>0</b>	<b>0</b>	<b>0</b>	<b>0</b>	<b>0</b>	<b>0</b>	<b>0</b>	<b>252</b>	<b>11,506</b>	<b>2,976</b>	<b>2,719</b>	<b>1,940</b>
Daily Avg.(mmscfd)	8	0	0	0	0	0	0	0	0	0	0	0	8		8	7	5
<b>Field :</b>	<b>Rupganj</b>																
Rupganj-1	0	0	0	0	0	0	0	0	0	0	0	0	0	679	0	0	0
<b>Field Total:</b>	<b>0</b>	<b>0</b>	<b>0</b>	<b>0</b>	<b>0</b>	<b>0</b>	<b>0</b>	<b>0</b>	<b>0</b>	<b>0</b>	<b>0</b>	<b>0</b>	<b>0</b>	<b>679</b>	<b>0</b>	<b>0</b>	<b>0</b>
Daily Avg.(mmscfd)	0	0	0	0	0	0	0	0	0	0	0	0	0		0	0	0
<b>Grand Total (in Bef)</b>	<b>69.38</b>	<b>0.00</b>	<b>0.00</b>	<b>0.00</b>	<b>0.00</b>	<b>0.00</b>	<b>0.00</b>	<b>0.00</b>	<b>0.00</b>	<b>0.00</b>	<b>0.00</b>	<b>0.00</b>	<b>69.4</b>	<b>20,035.03</b>	<b>828.2</b>	<b>858.5</b>	<b>875.1</b>
<b>Daily Avg.(mmscfd)</b>	<b>2,238</b>	<b>0</b>	<b>0</b>	<b>0</b>	<b>0</b>	<b>0</b>	<b>0</b>	<b>0</b>	<b>0</b>	<b>0</b>	<b>0</b>	<b>0</b>	<b>2,238</b>		<b>2,269</b>	<b>2,352</b>	<b>2,391</b>

## Monthly Condensate Production by Fields upto January 2023



Field Name	Jan	Feb	Mar	Apr	May	Jun	Jul	Aug	Sep	Oct	Nov	Dec	Total	Cumulative 000' bbl	2022	2021	2020	
Bakhrabad	1,372												1,372	1,077	14,234	14,882	18,004	
Daily Avg.	44	0	0	0	0	0	0	0	0	0	0	0	44		39	41	49	
Bangura	4,830												4,830	1,394	49,145	75,148	95,394	
Daily Avg.	156	0	0	0	0	0	0	0	0	0	0	0	156		135	206	261	
Beani Bazar	7,447												7,447	1,753	40,093	41,982	46,061	
Daily Avg.	240	0	0	0	0	0	0	27	0	0	0	0	240		110	115	126	
Bibiyana	202,652												202,652	30,928	1,647,046	2,048,709	2,780,633	
Daily Avg.	6,537	0	0	0	0	0	0	0	0	0	0	0	6,537		4,512	5,613	7,597	
Chattak	0	0	0	0	0	0	0	0	0	0	0	0	0	4	0	0	0	
Daily Avg.	0	0	0	0	0	0	0	0	0	0	0	0	0		0	0	0	
Fenchuganj	168												168	121	2,396	2,460	527	
Daily Avg.	5	0	0	0	0	0	0	0	0	0	0	0	5		7	7	1	
Feni	0	0	0	0	0	0	0	0	0	0	0	0	0	110	0	0	0	
Daily Avg.	0	0	0	0	0	0	0	0	0	0	0	0	0		0	0	0	
Habiganj	250												250	149	2,705	3,416	5,510	
Daily Avg.	8	0	0	0	0	0	0	0	0	0	0	0	8		7	9	15	
Jalalabad	26,767												26,767	11,527	329,117	346,435	367,161	
Daily Avg.	863	0	0	0	0	0	0	0	0	0	0	0	863		902	949	1,003	
Kailas Tila	12,473												12,473	8,431	149,408	126,611	177,210	
Daily Avg.	402	0	0	0	0	0	0	0	0	0	0	0	402		409	347	484	
Kamta	Production Suspended										0	0		4				
Daily Avg.	0										0	0		0		0	0	0
Meghna	181												181	130	3,491	5,456	6,652	
Daily Avg.	6	0	0	0	0	0	0	0	0	0	0	0	6		10	15	18	
Moulavi Bazar	44												44	121	995	847	1,262	
Daily Avg.	1	0	0	0	0	0	0	0	0	0	0	0	1		3	2	3	

## Monthly Condensate Production by Fields upto January 2023



Field Name	Jan	Feb	Mar	Apr	May	Jun	Jul	Aug	Sep	Oct	Nov	Dec	Total	Cumulative 000' bbl	2022	2021	2020
Narshingdi	1,151												1,151	476	14,905	14,370	13,907
Daily Avg.	37	0	0	0	0	0	0	0	0	0	0	0	37		41	39	38
Rashidpur	1,202												1,202	837	14,105	14,274	15,049
Daily Avg.	39	0	0	0	0	0	0	0	0	0	0	0	39		39	39	41
Saldanadi	70												70	60	585	118	240
Daily Avg.	2	0	0	0	0	0	0	0	0	0	0	0	2		2	0	1
Sangu	0	0	0	0	0	0	0	0	0	0	0	0	0	37	0	0	0
Daily Avg.	0	0	0	0	0	0	0	0	0	0	0	0	0		0	0	0
Semutang	0	0	0	0	0	0	0	0	0	0	0	0	0	5	0	0	0
Daily Avg.	0	0	0	0	0	0	0	0	0	0	0	0	0		0	0	0
Shahbazpur	255												255	16	2,640	2,655	1,839
Daily Avg.	8	0	0	0	0	0	0	0	0	0	0	0	8		7	7	5
Srikail	5,592												5,592	314	63,152	61,474	21,213
Daily Avg.	180	0	0	0	0	0	0	0	0	0	0	0	180		173	168	58
Sundalpur	10												10	1	152	121	89
Daily Avg.	0	0	0	0	0	0	0	0	0	0	0	0	0		0	0	0
Sylhet	1,159												1,159	840	13,919	10,261	8,982
Daily Avg.	37	0	0	0	0	0	0	0	0	0	0	0	37		38	28	25
Titas	9,744												9,744	5,717	115,793	108,670	117,408
Daily Avg.	314	0	0	0	0	0	0	0	0	0	0	0	314		317	298	321
Begumganj	68												68	3	814	831	380
Daily Avg.	2	0	0	0	0	0	0	0	0	0	0	0	2		2	2	1
Rupganj	0	0	0	0	0	0	0	0	0	0	0	0	0	1	0	0	0
Daily Avg.	0	0	0	0	0	0	0	0	0	0	0	0	0		0	0	0
<b>Total (000'bbl)</b>	<b>275</b>	<b>0</b>	<b>0</b>	<b>0</b>	<b>0</b>	<b>0</b>	<b>0</b>	<b>0</b>	<b>0</b>	<b>0</b>	<b>0</b>	<b>0</b>	<b>275</b>	<b>64,055</b>	<b>2,465</b>	<b>2,879</b>	<b>3,678</b>
<b>Daily Avg. (000'bbl)</b>	<b>8.9</b>	<b>0.0</b>	<b>0.0</b>	<b>0.0</b>	<b>0.0</b>	<b>0</b>	<b>0.0</b>	<b>0.0</b>	<b>0.0</b>	<b>0.0</b>	<b>0</b>	<b>0</b>	<b>9</b>		<b>6.8</b>	<b>7.9</b>	<b>10.0</b>

Note: Historical condensate figure of Sangu available from 2006. Sylhet available from August 1964

## Monthly Water Production by Fields in January 2023



**HYDROCARBON UNIT**  
Energy & Mineral Resources Division

Field Name	Jan	Feb	Mar	Apr	May	Jun	Jul	Aug	Sep	Oct	Nov	Dec	Total	2022	
Bakhrabad	7,168												7,168	41,667	23,532
Daily Avg.	231	0	0	0	0	0	0	0	0	0	0	0	231	114	64
Bangura	3,188												3,188	228,414	247,538
Daily Avg.	103	0	0	0	0	0	0	0	0	0	0	0	103	626	678
Beani Bazar	21,352												21,352	227,536	202,439
Daily Avg.	689	0	0	0	0	0	0	0	0	0	0	0	689	623	555
Bibiyana	23,666												23,666	300,138	211,873
Daily Avg.	763	0	0	0	0	0	0	0	0	0	0	0	763	822	580
Chattak	0	0	0	0	0	0	0	0	0	0	0	0	0	0	0
Daily Avg.	0	0	0	0	0	0	0	0	0	0	0	0	0	0	0
Fenchuganj	3,870												3,870	40,238	22,412
Daily Avg.	125	0	0	0	0	0	0	0	0	0	0	0	125	110	61
Feni	0	0	0	0	0	0	0	0	0	0	0	0	0	0	0
Daily Avg.	0	0	0	0	0	0	0	0	0	0	0	0	0	0	0
Habiganj	7,098												7,098	76,382	40,135
Daily Avg.	229	0	0	0	0	0	0	0	0	0	0	0	229	209	110
Jalalabad	1,371												1,371	46,828	63,469
Daily Avg.	44	0	0	0	0	0	0	0	0	0	0	0	44	128	174
Kailas Tila	34,680												34,680	166,147	145,547
Daily Avg.	1,119	0	0	0	0	0	0	0	0	0	0	0	1,119	455	399
Kamta	0	0	0	0	0	0	0	0	0	0	0	0	0	0	0
Daily Avg.	0	0	0	0	0	0	0	0	0	0	0	0	0	0	0
Meghna	8,272												8,272	85,545	22,459
Daily Avg.	267	0	0	0	0	0	0	0	0	0	0	0	267	234	62
Moulavi Baza	274												274	3,396	2,559
Daily Avg.	9	0	0	0	0	0	0	0	0	0	0	0	9	9	7
Narshingdi	906												906	11,738	10,185
Daily Avg.	29	0	0	0	0	0	0	0	0	0	0	0	29	32	28
Rashidpur	21,024												21,024	236,678	237,280
Daily Avg.	678	0	0	0	0	0	0	0	0	0	0	0	678	648	650
Saldanadi	139												139	1,564	1,169
Daily Avg.	4	0	0	0	0	0	0	0	0	0	0	0	4	4	3

## Monthly Water Production by Fields in January 2023



**HYDROCARBON UNIT**  
Energy & Mineral Resources Division

Field Name	Jan	Feb	Mar	Apr	May	Jun	Jul	Aug	Sep	Oct	Nov	Dec	Total	2022	
Sangu	0	0	0	0	0	0	0	0	0	0	0	0	0	0	0
Daily Avg.	0	0	0	0	0	0	0	0	0	0	0	0	0	0	0
Semutang	3,813												3,813	35,265	1,175
Daily Avg.	123	0	0	0	0	0	0	0	0	0	0	0	123	97	3
Shahbazpur	2,903												2,903	27,855	24,246
Daily Avg.	94	0	0	0	0	0	0	0	0	0	0	0	94	76	66
Srikail	1,959												1,959	19,797	15,601
Daily Avg.	63	0	0	0	0	0	0	0	0	0	0	0	63	54	43
Sundalpur	41												41	541	481
Daily Avg.	1	0	0	0	0	0	0	0	0	0	0	0	1	1	1
Sylhet	16,383												16,383	176,282	139,166
Daily Avg.	528	0	0	0	0	0	0	0	0	0	0	0	528	483	381
Titas	19,903												19,903	210,230	213,927
Daily Avg.	642	0	0	0	0	0	0	0	0	0	0	0	642	576	586
Begumganj	86												86	1,024	962
Daily Avg.	3	0	0	0	0	0	0	0	0	0	0	0	3	3	3
Rupganj	0												0	0	0
Daily Avg.	0	0	0	0	0	0	0	0	0	0	0	0	0	0	0
<b>Total (000'bl</b>	<b>178,096</b>	<b>0</b>	<b>0</b>	<b>0</b>	<b>0</b>	<b>0</b>	<b>0</b>	<b>0</b>	<b>0</b>	<b>0</b>	<b>0</b>	<b>0</b>	<b>178,096</b>	<b>1,937,265</b>	<b>1,626,156</b>
<b>Daily Avg. (000'bbl)</b>	<b>5,745</b>	<b>0</b>	<b>0</b>	<b>0</b>	<b>0</b>	<b>0</b>	<b>0</b>	<b>0</b>	<b>0</b>	<b>0</b>	<b>0</b>	<b>0</b>	<b>5,745</b>	<b>5,308</b>	<b>4,455</b>

## Conditions of Field and Well upto January 2023



Well	company	well type	Discovery	production start	Drilled depth (ft)	Pressure	Pressure type	Completion Zone
<b>Field : Bakharabad</b>								
BKB-1	BGFCL	Vertical	1969	June,1969	9309		FWHP	J
BKB-2	BGFCL	Directional	1969	October,1981	7496	248-274	FWHP	G
BKB-3	BGFCL	Directional	1969	April,1982	9339	356-412	FWHP	G
BKB-4	BGFCL	Directional	1969	June,1982	9430			D
BKB-5	BGFCL	Directional	1969	Sept,1982	9675	1555-1646	FWHP	B
BKB-6	BGFCL	Directional	1969	March,1989	8785			J
BKB-7	BGFCL	Directional	1969	July,1989	8605		FWHP	J
BKB-8	BGFCL	Directional	1969	Sept,1989	8840	490-523	FWHP	J
BKB-9	BGFCL	Vertical	1969	August,2013	8318	1005-1097	FWHP	G
BKB-10	BGFCL	Directional	1969	June,2016	9291	1010-1102	FWHP	K
<b>Field : Bangura</b>								
Bangura-1	Tullow		2004			887-940	FWHP	D
Bangura-2	Tullow		2004			587-685	FWHP	D/E
Bangura-3	Tullow		2004			719-789	FWHP	D
Bangura-6	Tullow		2004			708-780	FWHP	D
Bangura-5	Tullow		2004			579-621	FWHP	D
<b>Field : Beani Bazar</b>								
BB-1	SGFL		1981	July,1999	13480	580-620	SIWHP	Upper
BB-2	SGFL		1981	July,1999	12048	3210-3220	FWHP	Upper
<b>Field : Bibiyana</b>								
BY-1	Chevron		1998			1547-2007	FWHP	BB60, BB66
BY-2	Chevron		1998			1313-1390	FWHP	BB60, BH20A, BH20E
BY-3	Chevron		1998			1363-1403	FWHP	BB70
BY-4	Chevron		1998			1330-1390	FWHP	BH10
BY-5	Chevron		1998			1254-1299	FWHP	BH20A, BH20B, BH20C, BH20D
BY-6	Chevron		1998			1250-1486	FWHP	BB70
BY-7	Chevron		1998			1454-1566	FWHP	BH10
BY-8	Chevron		1998			1270-1297	FWHP	BH20A, BH20B
BY-9	Chevron		1998			1243-1273	FWHP	BH10
BY-10	Chevron		1998			1465-1533	FWHP	BB60
BY-11	Chevron		1998			1260-1284	FWHP	BH20A, BH20B
BY-12	Chevron		1998			1259-1332	FWHP	BB70
BY-13	Chevron		1998			1300-1356	FWHP	BH20A, BH20B
BY-14	Chevron		1998			1342-1632	FWHP	BH20A, BH20B
BY-15	Chevron		1998			2189-2240	FWHP	BB60
BY-16	Chevron		1998			1381-1644	FWHP	BH10, BH20D

## Conditions of Field and Well upto January 2023



Well	company	well type	Discovery	production start	Drilled depth (ft)	Pressure	Pressure type	Completion Zone
BY-17	<i>Chevron</i>		<i>1998</i>			<i>2104-2229</i>	<i>FWHP</i>	<i>BB60</i>
BY-18	<i>Chevron</i>		<i>1998</i>			<i>1904-2218</i>	<i>FWHP</i>	<i>BB60</i>
BY-19	<i>Chevron</i>		<i>1998</i>			<i>1354-1477</i>	<i>FWHP</i>	<i>BH10, BH20A</i>
BY-20	<i>Chevron</i>		<i>1998</i>			<i>1248-1262</i>	<i>FWHP</i>	<i>BH20D, BH20A, BH10</i>
BY-21	<i>Chevron</i>		<i>1998</i>			<i>1333-1348</i>	<i>FWHP</i>	<i>BH20A, BH20B, BH10</i>
BY-22	<i>Chevron</i>		<i>1998</i>			<i>1552-1586</i>	<i>FWHP</i>	<i>BB60</i>
BY-23	<i>Chevron</i>		<i>1998</i>			<i>1739-2021</i>	<i>FWHP</i>	<i>BH10, BH20A, BH20B, BH20C</i>
BY-24	<i>Chevron</i>		<i>1998</i>			<i>1337-2091</i>	<i>FWHP</i>	<i>BB60</i>
BY-25	<i>Chevron</i>		<i>1998</i>			<i>1728-1857</i>	<i>FWHP</i>	<i>BB60, BB66</i>
BY-26	<i>Chevron</i>		<i>1998</i>			<i>1877-2094</i>	<i>FWHP</i>	<i>BB60, BB64</i>
<b>Field : Chattak</b>								
Ch-1	SGFL		1959					
<b>Field : Fenchuganj</b>								
Fenchuganj-2	<i>BAPEX</i>		<i>1988</i>	<i>May, 2004</i>				
Fenchuganj-3	<i>BAPEX</i>		<i>1988</i>	<i>February, 2005</i>		<i>2004-2010</i>		<i>upper</i>
Fenchuganj-4	<i>BAPEX</i>		<i>1988</i>			<i>2037-2065</i>		
<b>Field : Feni</b>								
Feni-1	<i>BAPEX</i>		<i>1981</i>					
Feni-2	<i>BAPEX</i>		<i>1981</i>					
Feni-3	<i>BAPEX</i>		<i>1981</i>					
Feni-4	<i>BAPEX</i>		<i>1981</i>					
Feni-5	<i>BAPEX</i>		<i>1981</i>					
<b>Field : Habiganj</b>								
Hbj-1	<i>BGFCL</i>	<i>Vertical</i>	<i>1963</i>	<i>Feb,1969</i>	<i>11500</i>		<i>FWHP</i>	<i>upper</i>
Hbj-2	<i>BGFCL</i>	<i>Vertical</i>	<i>1963</i>	<i>Feb,1969</i>	<i>5100</i>		<i>FWHP</i>	<i>upper</i>
Hbj-3	<i>BGFCL</i>	<i>Vertical</i>	<i>1963</i>	<i>July,1985</i>	<i>5282</i>	<i>1478-1486</i>	<i>FWHP</i>	<i>upper</i>
Hbj-4	<i>BGFCL</i>	<i>Vertical</i>	<i>1963</i>	<i>May,1985</i>	<i>5249</i>	<i>1460-1467</i>	<i>FWHP</i>	<i>upper</i>
Hbj-5	<i>BGFCL</i>	<i>Directional</i>	<i>1963</i>	<i>Feb,1992</i>	<i>11552</i>	<i>1440-1446</i>	<i>FWHP</i>	<i>upper</i>
Hbj-6	<i>BGFCL</i>	<i>Vertical</i>	<i>1963</i>	<i>Feb,1992</i>	<i>5515</i>	<i>1375-1379</i>	<i>FWHP</i>	<i>upper</i>
Hbj-7	<i>BGFCL</i>	<i>Vertical</i>	<i>1963</i>	<i>April,2000</i>	<i>10236</i>	<i>1331-1139</i>	<i>FWHP</i>	<i>upper</i>
Hbj-8	<i>BGFCL</i>	<i>Vertical</i>	<i>1963</i>	<i>May, 2000</i>	<i>5280</i>			<i>upper</i>
Hbj-9	<i>BGFCL</i>	<i>Vertical</i>	<i>1963</i>	<i>July,1998</i>	<i>5249</i>			<i>upper</i>
Hbj-10	<i>BGFCL</i>	<i>Vertical</i>	<i>1963</i>	<i>Apr, 2000</i>	<i>5133</i>	<i>1322-1331</i>	<i>FWHP</i>	<i>upper</i>
Hbj-11	<i>BGFCL</i>	<i>Vertical</i>	<i>1963</i>	<i>February,2008</i>	<i>10499</i>	<i>1417-1423</i>	<i>FWHP</i>	<i>upper</i>
<b>Field : Jalalabad</b>								
JB-1	<i>Chevron</i>		<i>1989</i>			<i>1333-1436</i>	<i>FWHP</i>	<i>BB60, BB50</i>



## Conditions of Field and Well upto January 2023



Well	company	well type	Discovery	production start	Drilled depth (ft)	Pressure	Pressure type	Completion Zone
JB-2	<i>Chevron</i>		<i>1989</i>			<i>1279-1294</i>	<i>FWHP</i>	<i>BB50, BB60</i>
JB-3	<i>Chevron</i>		<i>1989</i>			<i>1332-1375</i>	<i>FWHP</i>	<i>BB50, BB60</i>
JB-4	<i>Chevron</i>		<i>1989</i>			<i>1365-1425</i>	<i>FWHP</i>	<i>BB60</i>
JB-6	<i>Chevron</i>		<i>1989</i>			<i>1354-1362</i>	<i>FWHP</i>	<i>BB60, BB50</i>
JB-7	<i>Chevron</i>		<i>1989</i>			<i>1666-1679</i>	<i>FWHP</i>	<i>BB20</i>
JB-8	<i>Chevron</i>		<i>1989</i>			<i>1362-1370</i>	<i>FWHP</i>	<i>BB50, BB60</i>
<b>Field : Kailas Tila</b>								
KTL-1	<i>SGFL</i>		<i>1962</i>	<i>June, 1983</i>	<i>12417</i>	<i>0</i>	<i>SIWHP</i>	
KTL-2	<i>SGFL</i>		<i>1962</i>	<i>Feb, 1995</i>		<i>2225-2230</i>	<i>FWHP</i>	
KTL-3	<i>SGFL</i>		<i>1962</i>	<i>March, 1995</i>		<i>2470-2495</i>	<i>FWHP</i>	
KTL-4	<i>SGFL</i>		<i>1962</i>	<i>March, 1997</i>		<i>2360-2410</i>	<i>FWHP</i>	
KTL-5	<i>SGFL</i>		<i>1962</i>	<i>Sep, 2006</i>		<i>0</i>	<i>SIWHP</i>	
KTL-6	<i>SGFL</i>		<i>1962</i>	<i>Aug, 2007</i>		<i>2490-2495</i>	<i>FWHP</i>	
KTL-7	<i>SGFL</i>		<i>1962</i>			<i>0</i>	<i>SIWHP</i>	
<b>Field : Kamta</b>								
Kamta-1	<i>BGFCL</i>	<i>Vertical</i>	<i>1981</i>	<i>july,1982</i>	<i>11857</i>			<i>N/A</i>
<b>Field : Meghna</b>								
M-1	<i>BGFCL</i>	<i>Vertical</i>	<i>2004</i>	<i>july,1990</i>	<i>10069</i>	<i>1400-1450</i>	<i>FWHP</i>	<i>A,E,F &amp; G</i>
<b>Field : Moulavi Bazar</b>								
MV Bazar-2	<i>Chevron</i>		<i>1997</i>			<i>800-820</i>	<i>FWHP</i>	<i>BB70</i>
MV Bazar-3	<i>Chevron</i>		<i>1997</i>			<i>800-820</i>	<i>FWHP</i>	<i>BB70</i>
MV Bazar-4	<i>Chevron</i>		<i>1997</i>			<i>946-952</i>	<i>FWHP</i>	<i>BB20</i>
MV Bazar-5	<i>Chevron</i>		<i>1997</i>			<i>0</i>	<i>SIWHP</i>	<i>BB60</i>
MV Bazar-6	<i>Chevron</i>		<i>1997</i>			<i>822-890</i>	<i>FWHP</i>	<i>BB20</i>
MV Bazar-7	<i>Chevron</i>		<i>1997</i>			<i>844-901</i>	<i>FWHP/SIWHP</i>	<i>BB20</i>
MV Bazar-9	<i>Chevron</i>		<i>1997</i>			<i>0</i>	<i>SIWHP</i>	<i>BB46, BB48, BB60</i>
<b>Field : Narshingdi</b>								
N-1	<i>BGFCL</i>	<i>vertical</i>	<i>1990</i>	<i>october,1990</i>	<i>11320</i>	<i>1143-1197</i>	<i>FWHP</i>	<i>BL</i>
N-2	<i>BGFCL</i>	<i>vertical</i>	<i>1990</i>	<i>february,2007</i>	<i>10778</i>	<i>1015-1097</i>	<i>FWHP</i>	<i>BL</i>
<b>Field : Rashidpur</b>								
RP-1	<i>SGFL</i>		<i>1960</i>			<i>1290-1291</i>	<i>FWHP</i>	<i>Upper</i>
RP-2	<i>SGFL</i>		<i>1960</i>			<i>73</i>	<i>SIWHP</i>	<i>Lower</i>
RP-3	<i>SGFL</i>		<i>1960</i>			<i>1548-1568</i>	<i>FWHP</i>	<i>Lower</i>
RP-4	<i>SGFL</i>		<i>1960</i>			<i>1450-1655</i>	<i>FWHP</i>	<i>Lower</i>
RP-5	<i>SGFL</i>		<i>1960</i>			<i>2291</i>	<i>SIWHP</i>	<i>Lower</i>
RP-6	<i>SGFL</i>		<i>1960</i>			<i>870</i>	<i>SIWHP</i>	<i>A</i>

## Conditions of Field and Well upto January 2023



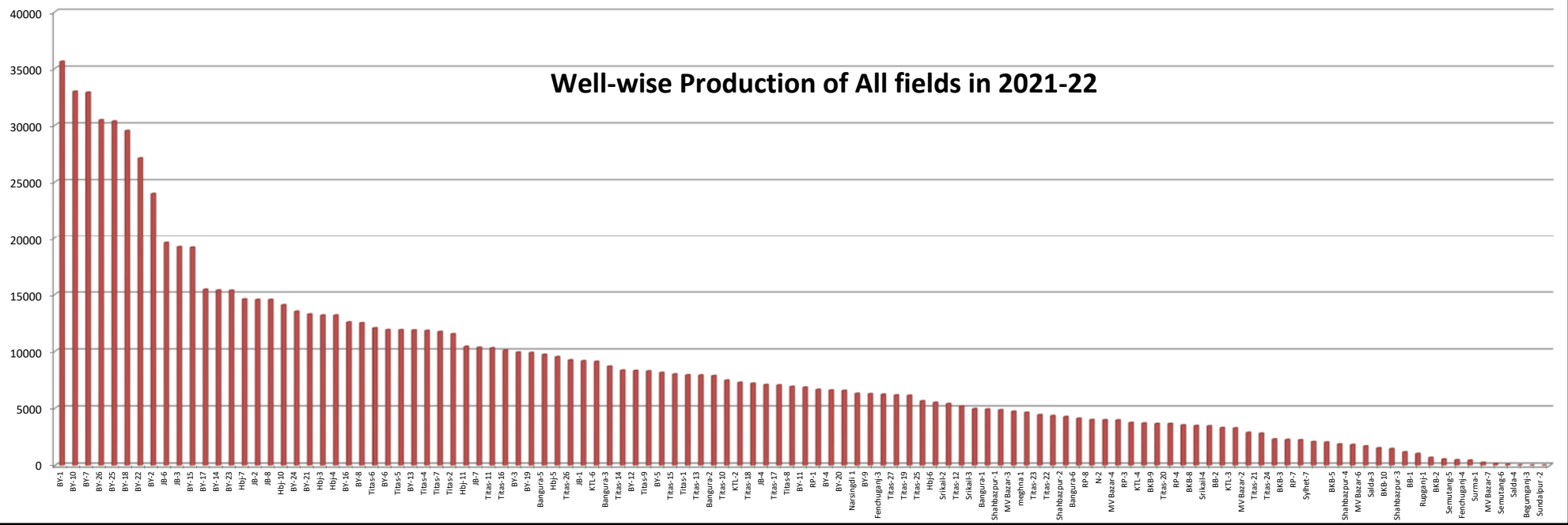
Well	company	well type	Discovery	production start	Drilled depth (ft)	Pressure	Pressure type	Completion Zone
RP-7	SGFL		1960			1308-1338	FWHP	Lower
RP-8	SGFL		1960			1600-1625	FWHP	Upper
<b>Field : Salda Nadi</b>								
Salda-1	BAPEX		1995					
Salda-2	BAPEX		1995					
Salda-3	BAPEX	Directional	1995	February, 2012		639-640, 698-700		Upper/Lower
Salda-4	BAPEX		1995					
<b>Field : Sangu</b>								
Sangu-1	BGFCL		1996					
Sangu-3z	BGFCL		1996					
Sangu-4	BGFCL		1996					
Sangu-5	BGFCL		1996					
Sangu-7	BGFCL		1996					
Sangu-8	BGFCL		1996					
Sangu-9	BGFCL		1996					
Sangu-10	BGFCL		1996					
Sangu-11	BGFCL		1996					
<b>Field : Semutang</b>								
Semutang-5	BAPEX		1967			280-508		Lower Zone
Semutang-6	BAPEX		1967			750-1302		
<b>Field : Shahbazpur</b>								
Shahbazpur-1	BAPEX		1995	May, 2009		2310-3543		Lower Zone
Shahbazpur-2	BAPEX		1995			3541-4133		Lower Zone
Shahbazpur-3	BAPEX		1995			4300		Upper Zone
Shahbazpur-4	BAPEX		1995			4250		Upper Zone
<b>Field : Srikail</b>								
Srikail-2	BAPEX		2012			990-1016		Upper & Lower D
Srikail-3	BAPEX		2012			981-1043		Upper & Lower D
Srikail-4	BAPEX		2012			1018-1068		Upper & Lower D
<b>Field : Sundalpur</b>								
Sundalpur -1	BAPEX		2011					
Sundalpur -2	BAPEX		2011					
<b>Field : Sylhet</b>								
Sylhet-3	SGFL		1955	Aug, 1958				
Sylhet-6	SGFL		1955	Aug, 1964		800-850	SIWHP	
Sylhet-7	SGFL		1955	Apr, 2005		1750-1820	FWHP	Lower Bokabil

## Conditions of Field and Well upto January 2023

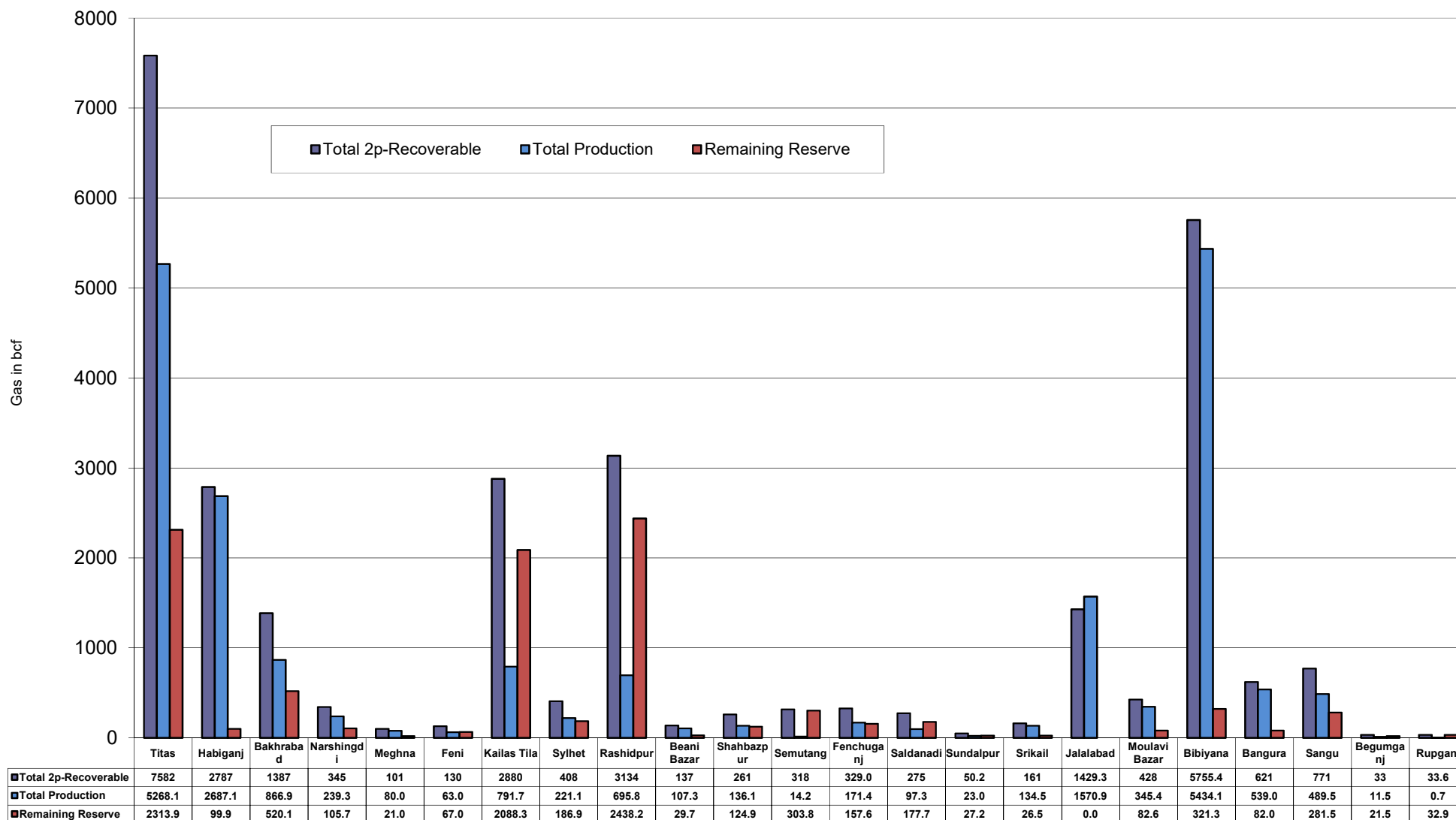


Well	company	well type	Discovery	production start	Drilled depth (ft)	Pressure	Pressure type	Completion Zone
Surma-1	SGFL		1955	June, 2010		230	SIWHP	C & D
<b>Field : Titas</b>								
Titas-1	BGFCL	vertical	1962	Mar,1969	12325	900-925	FWHP	A
Titas-2	BGFCL	vertical	1962	Fen,1969	10574	960-1020	FWHP	A
Titas-3	BGFCL	vertical	1962	sept,1969	9315	0	FWHP	A
Titas-4	BGFCL	vertical	1962	oct,1969	9350	1020-1070	FWHP	A
Titas-5	BGFCL	Directional	1962	jan,1981	10805	990-1035	FWHP	A
Titas-6	BGFCL	vertical	1962	Feb,1984	10072	1195-1225	FWHP	A
Titas-7	BGFCL	Directional	1962	July,1985	11006	1090-1160	FWHP	A
Titas-8	BGFCL	Directional	1962	sept,1985	11760	1000-1030	FWHP	B & C
Titas-9	BGFCL	Directional	1962	jan,1988	11893	1040-1085	FWHP	B & C
Titas-10	BGFCL	Directional	1962	may,1988	12139	1140-1180	FWHP	A
Titas-11	BGFCL	vertical	1962	Jun,1991	10462	1275-1310	FWHP	A
Titas-12	BGFCL	Directional	1962	July,2002	9873	1465-1500	FWHP	A
Titas-13	BGFCL	Directional	1962	June,2000	11487	1085-1115	FWHP	A
Titas-14	BGFCL	Directional	1962	June,2000	11004	1200-1250	FWHP	A
Titas-15	BGFCL	vertical	1962	may,2006	10446	0	FWHP	A
Titas-16	BGFCL	Directional	1962	dec,2005	11673	1205-1225	FWHP	A
Titas-17	BGFCL	vertical	1962	feb,2013	9424	1145-1175	FWHP	A
Titas-18	BGFCL	Directional	1962	august,2013	10932	1165-1190	FWHP	A
Titas-19	BGFCL	Directional	1962	may,2014	12730	1365-1415	FWHP	A
Titas-20	BGFCL	Directional	1962	oct,2013	11585	1370-1440	FWHP	A
Titas-21	BGFCL	Directional	1962	dec,2013	11631	1260-1285	FWHP	A
Titas-22	BGFCL	Directional	1962	march,2014	11926	990-1025	FWHP	A
Titas-27	BGFCL	Directional	1962	april,2014	10292	1245-1265	FWHP	A
Titas-23	BGFCL	Directional	1962	feb,2017	11988	2265-2340	FWHP	C
Titas-24	BGFCL	Directional	1962	oct,2016	12686	1120-1245	FWHP	C
Titas-25	BGFCL	vertical	1962	march,2016	11680	1300-1340	FWHP	A
Titas-26	BGFCL	Directional	1962	july,2016	12618	1840-1875	FWHP	C
<b>Field : Begumganj</b>								
Begumganj-3	BAPEX		1977					
<b>Field : Rupganj</b>								
Rupganj-1	BAPEX		2014			38-88		

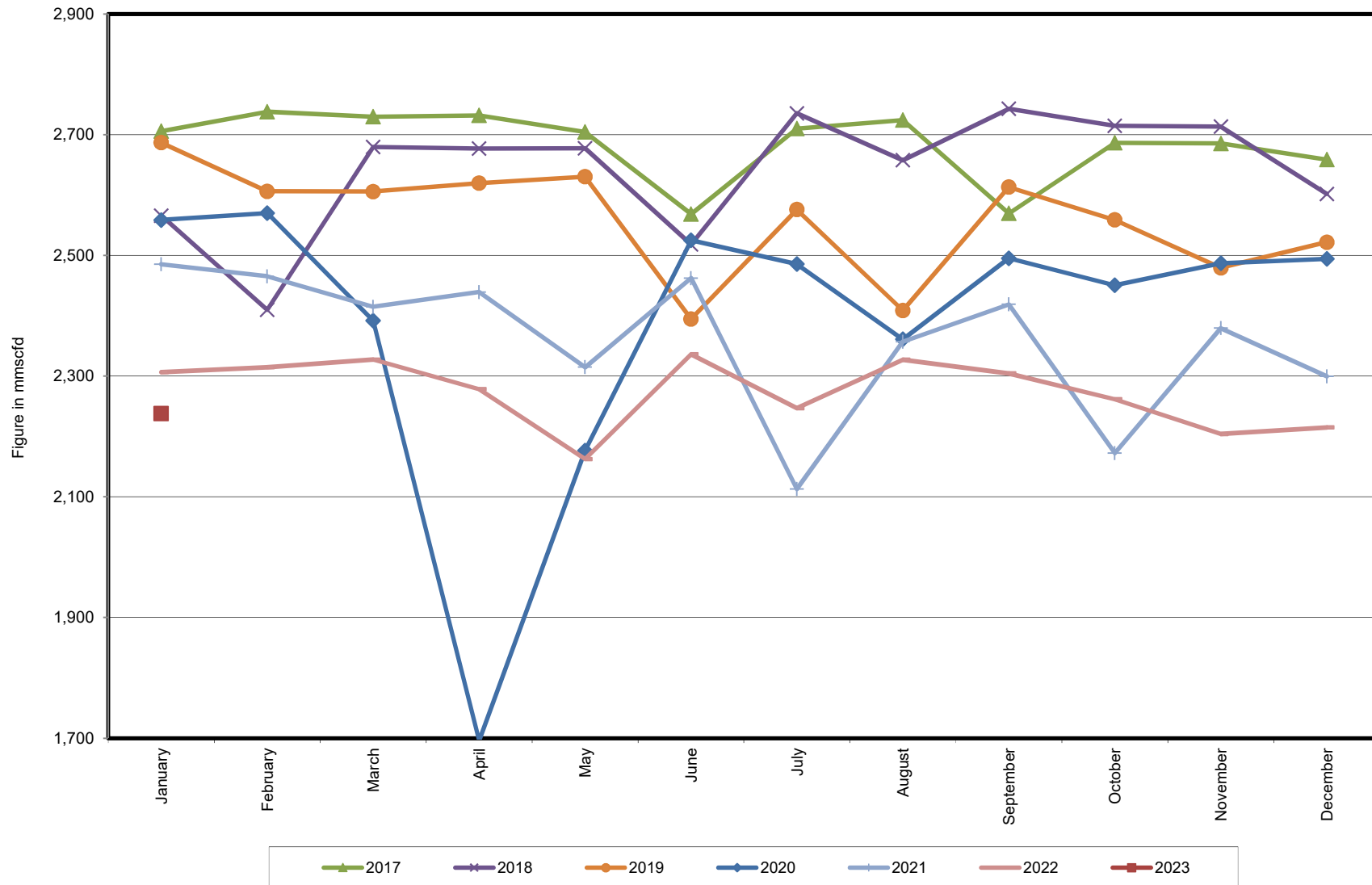
### Well-wise Production of All fields in 2021-22



## Reserve, Production and Remaining Reserve as of January 2023



## Daily Avg. Production From January 2017 to January 2023



## Field Wise Daily Avg. Production January 2023

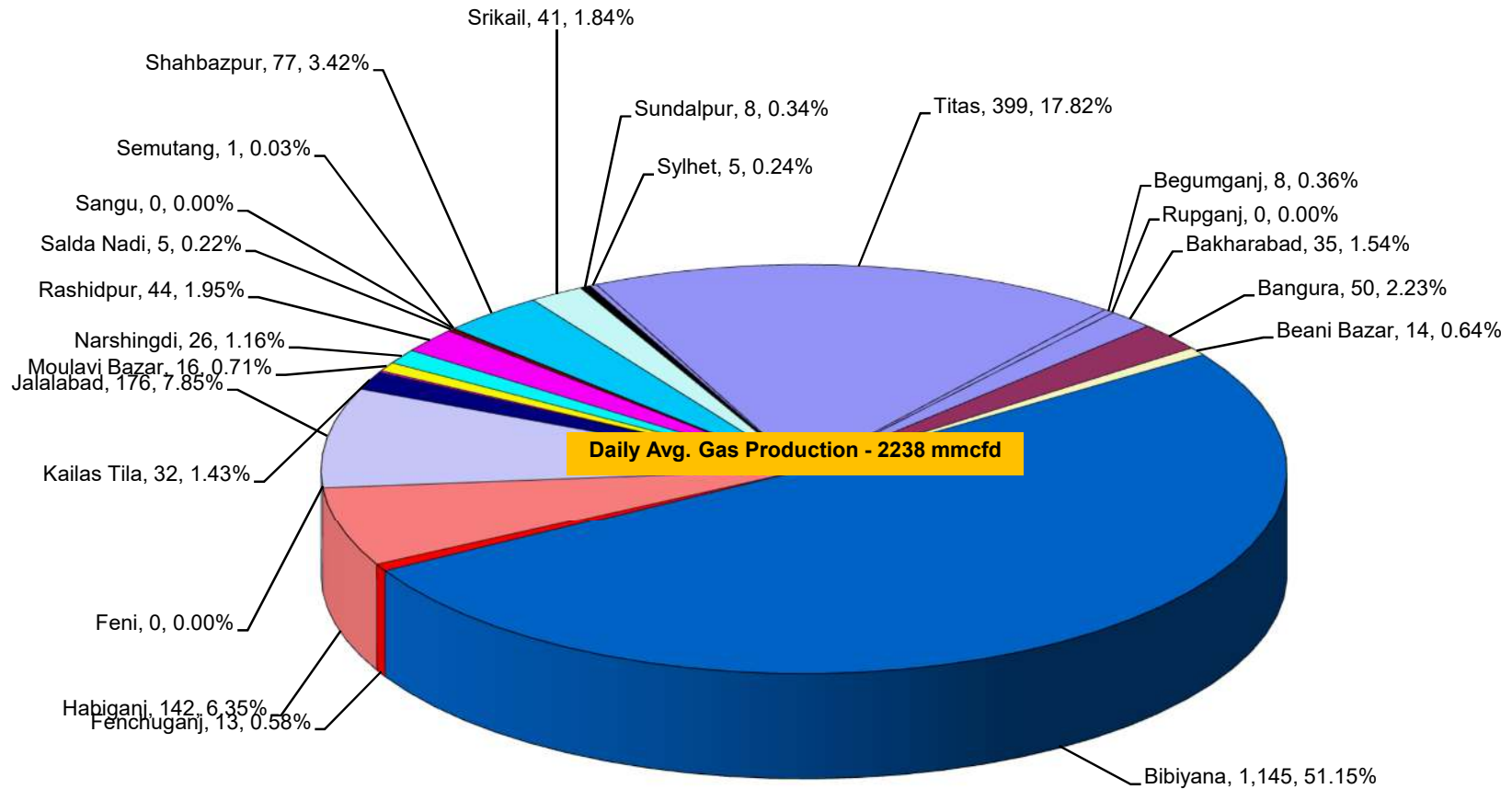
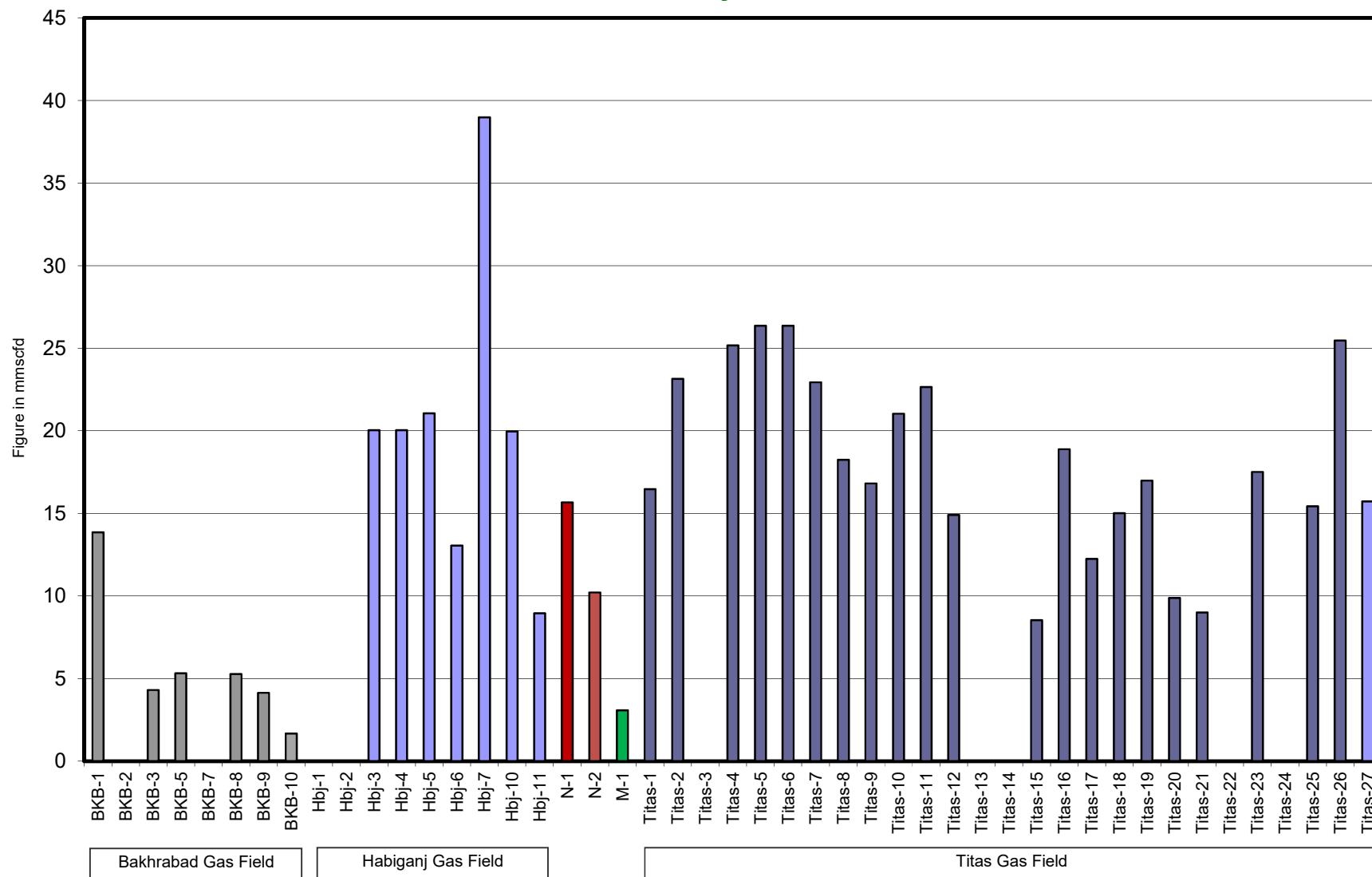


Figure in mmcf and % of total production

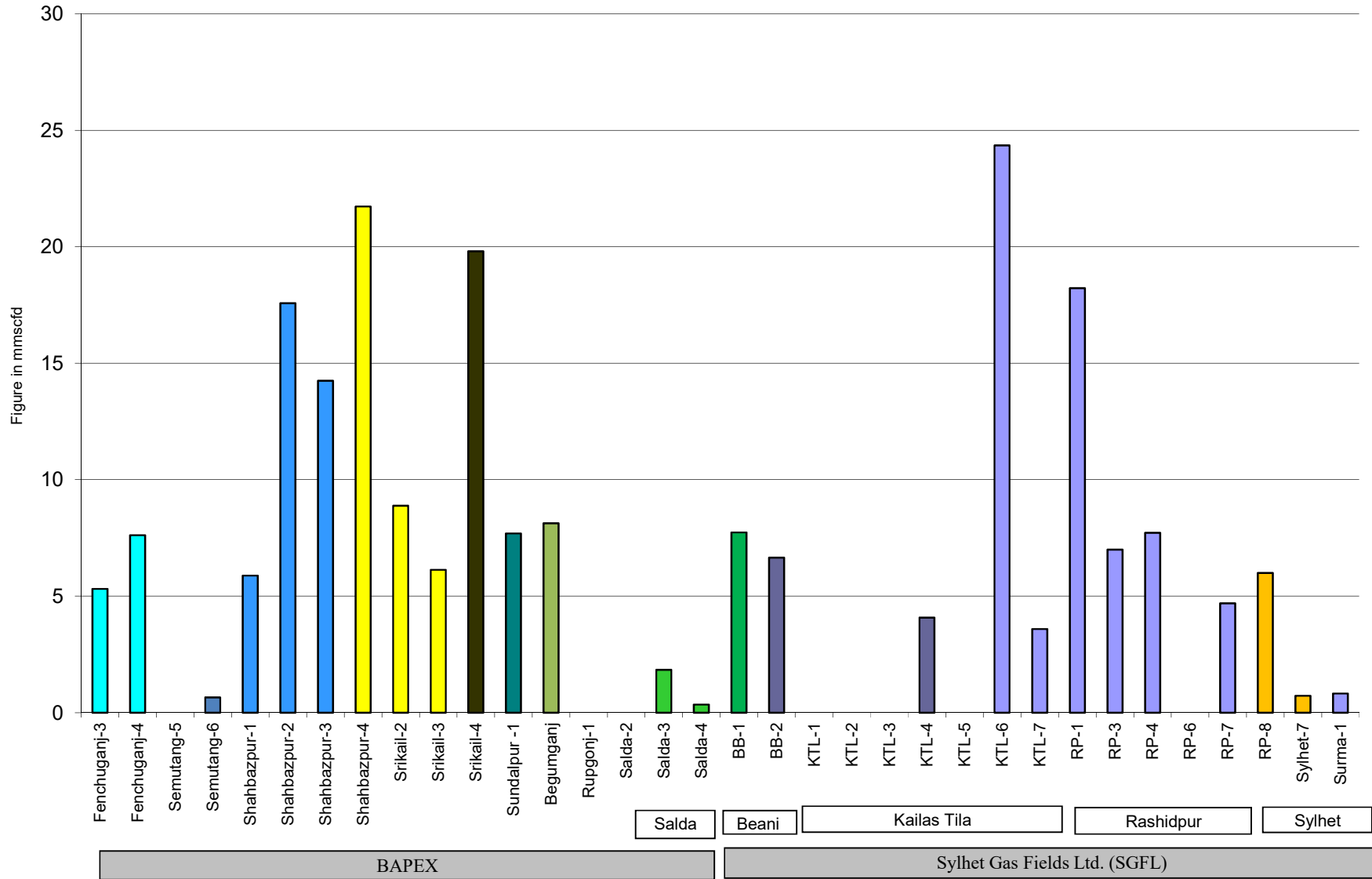
## Wellwise Daily Avg. Production- BGFCL January 2023



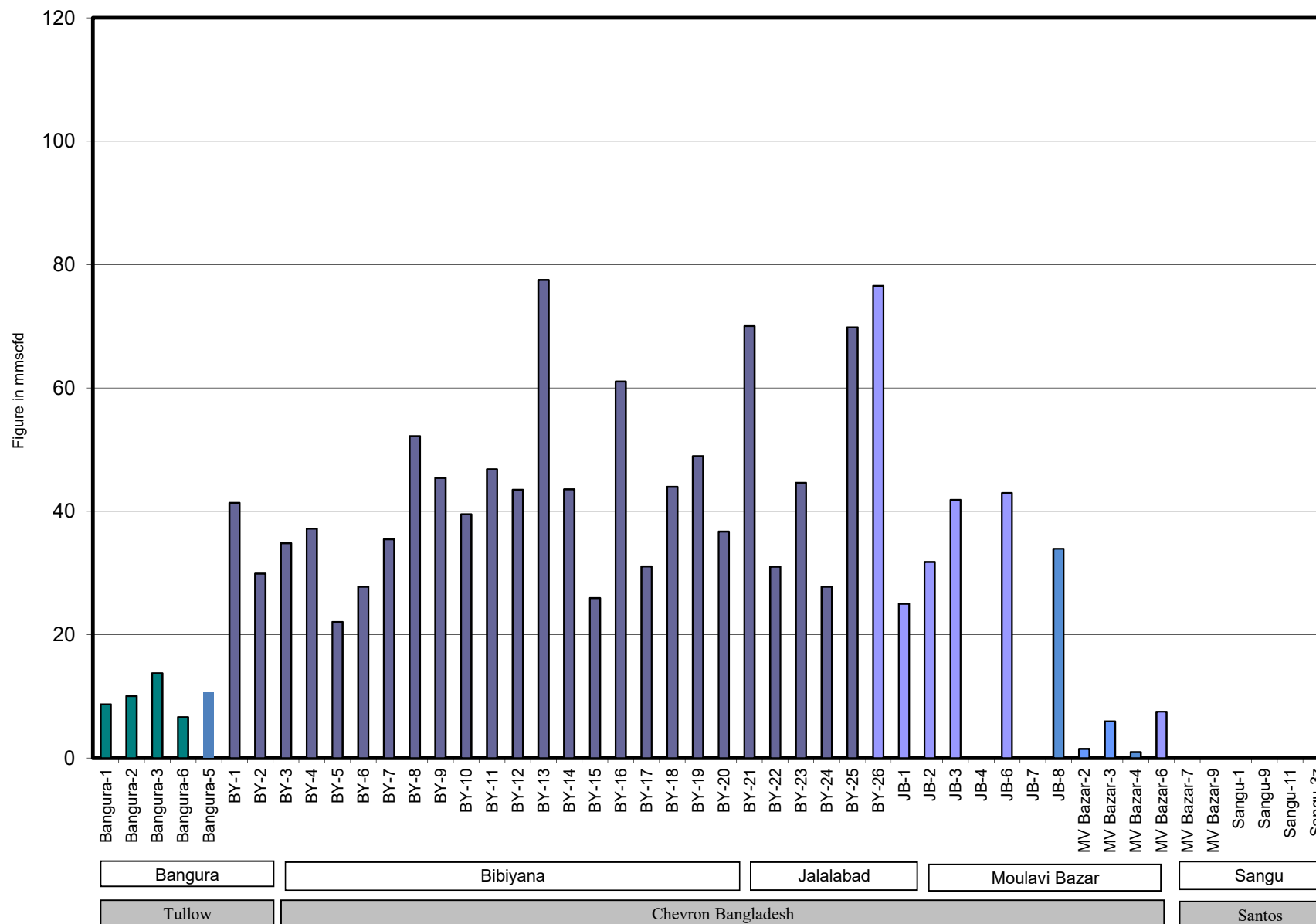
Bangladesh Gas Fields Co. Ltd. (BGFCL)



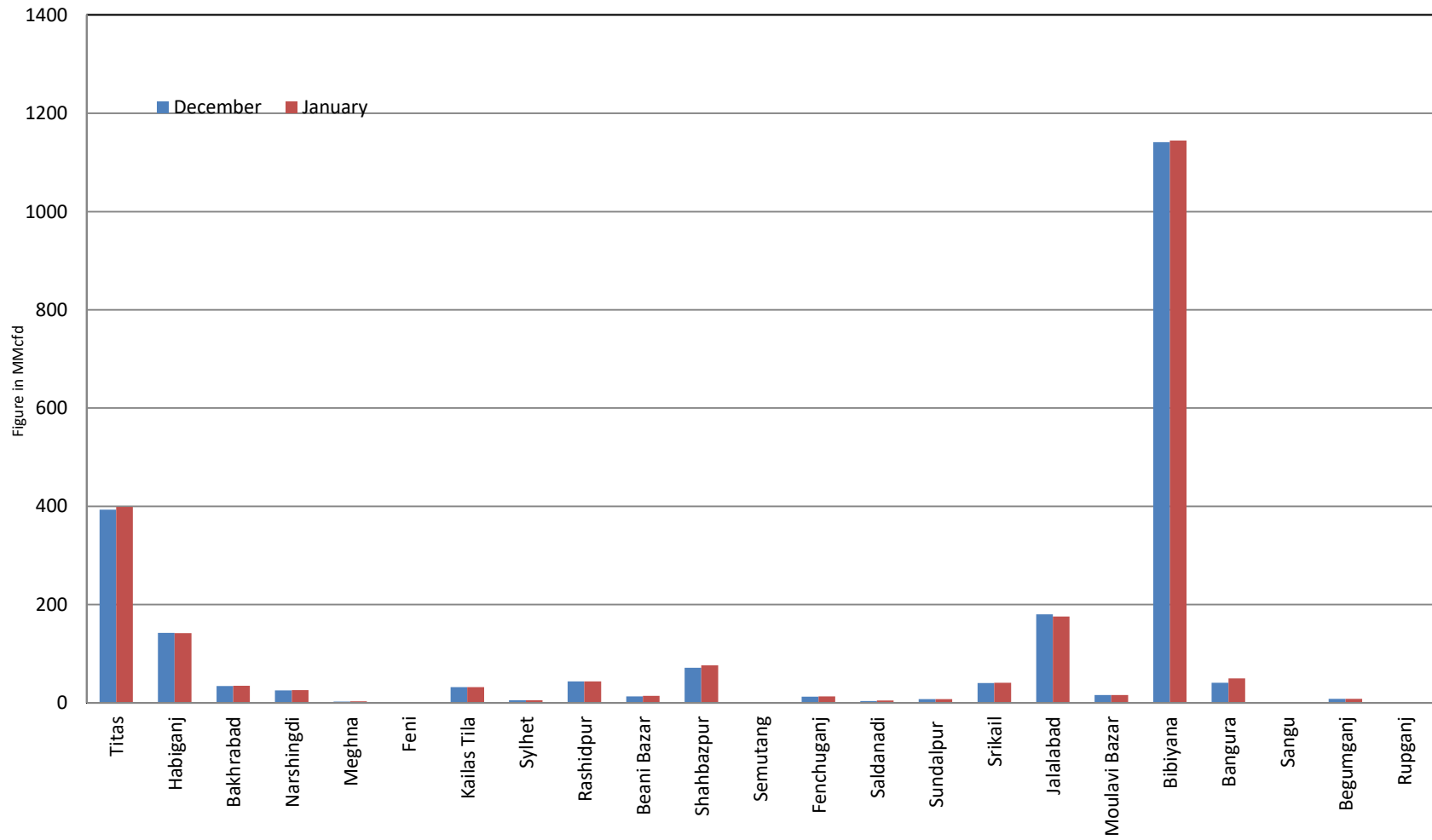
# Wellwise Daily Avg. Production- Bapex and SGFL January 2023



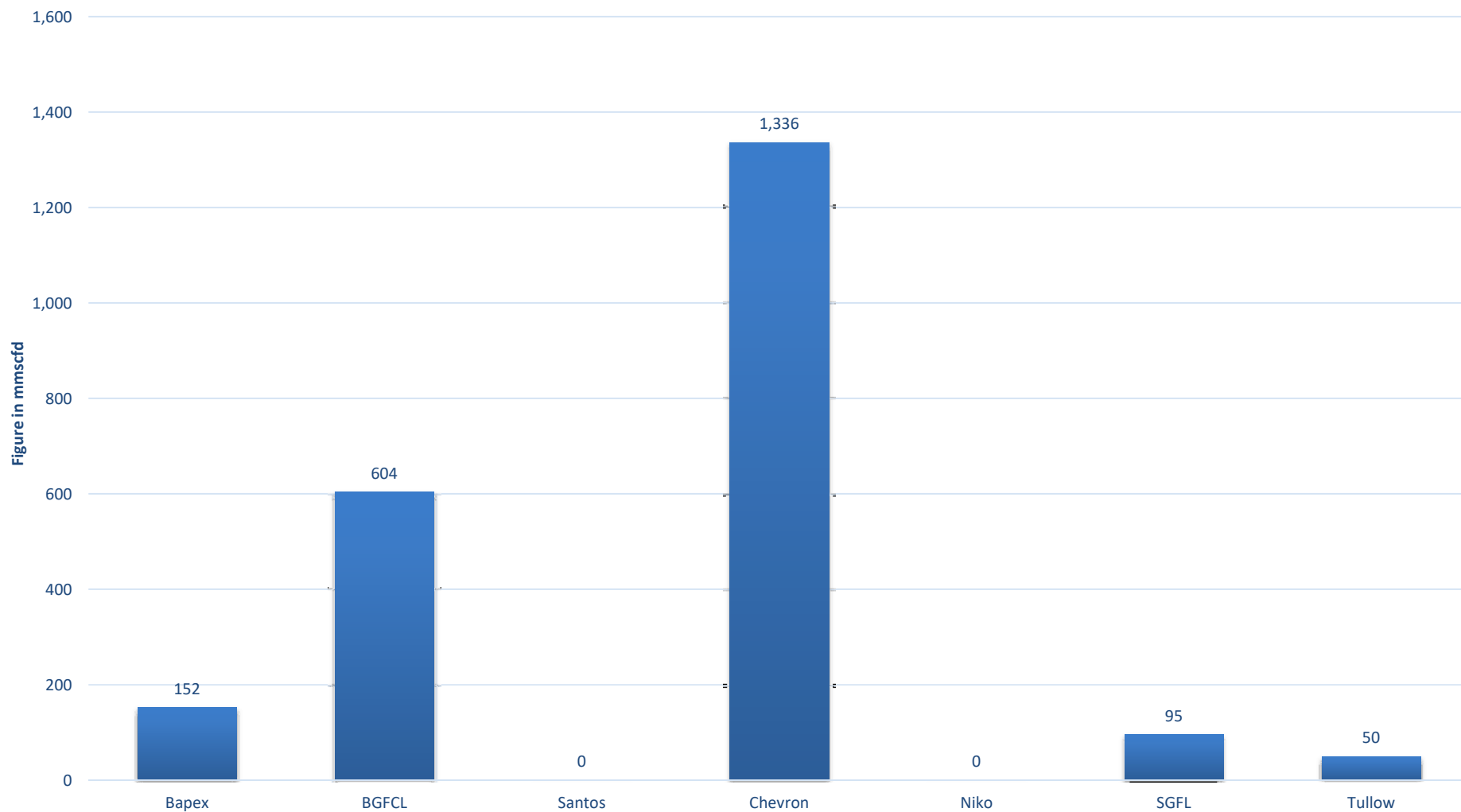
## Wellwise Daily Avg. Production- IOC and JVA January 2023



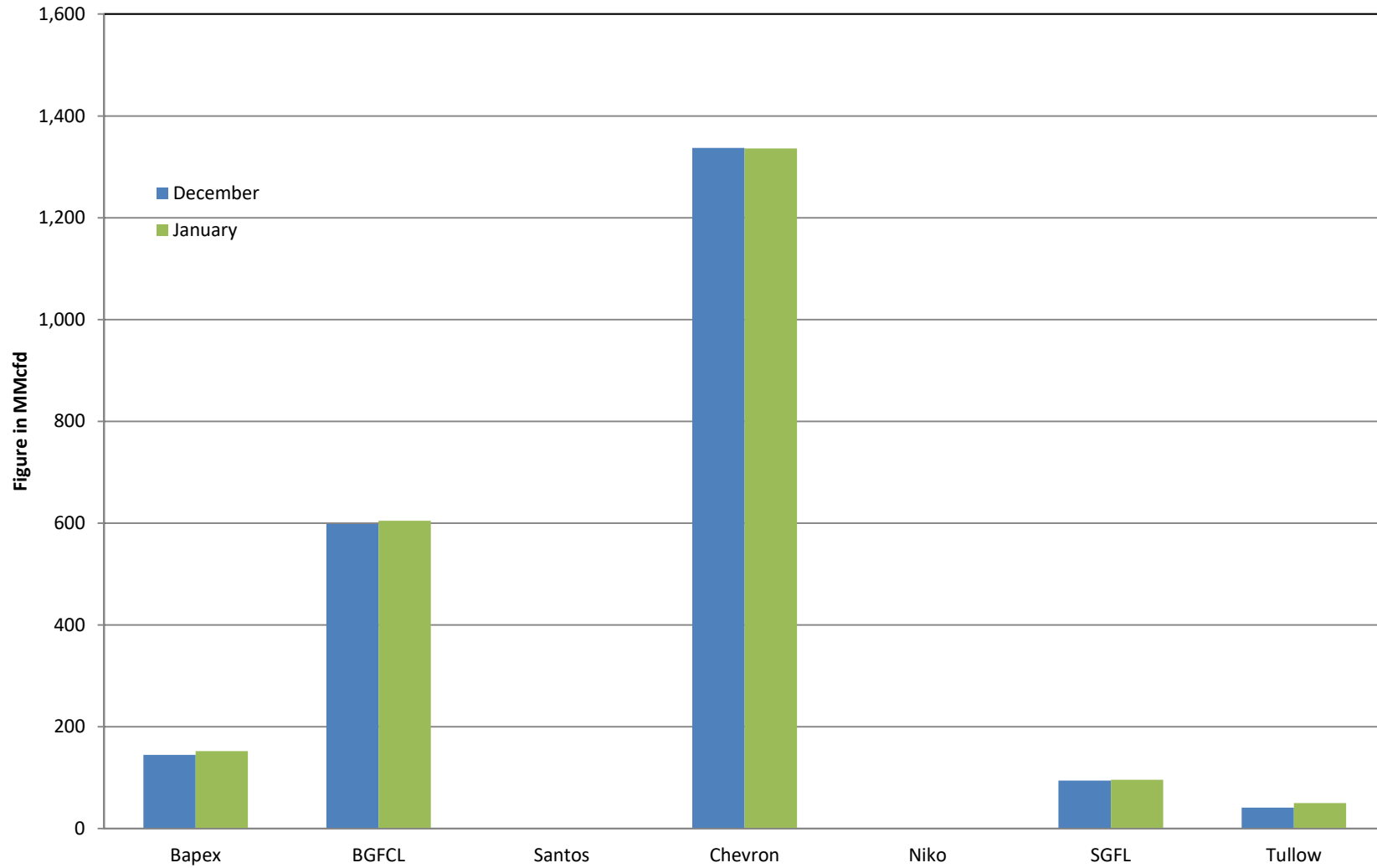
### Comparison of fieldwise daily avg. Gas production between December 2022 & January 2023



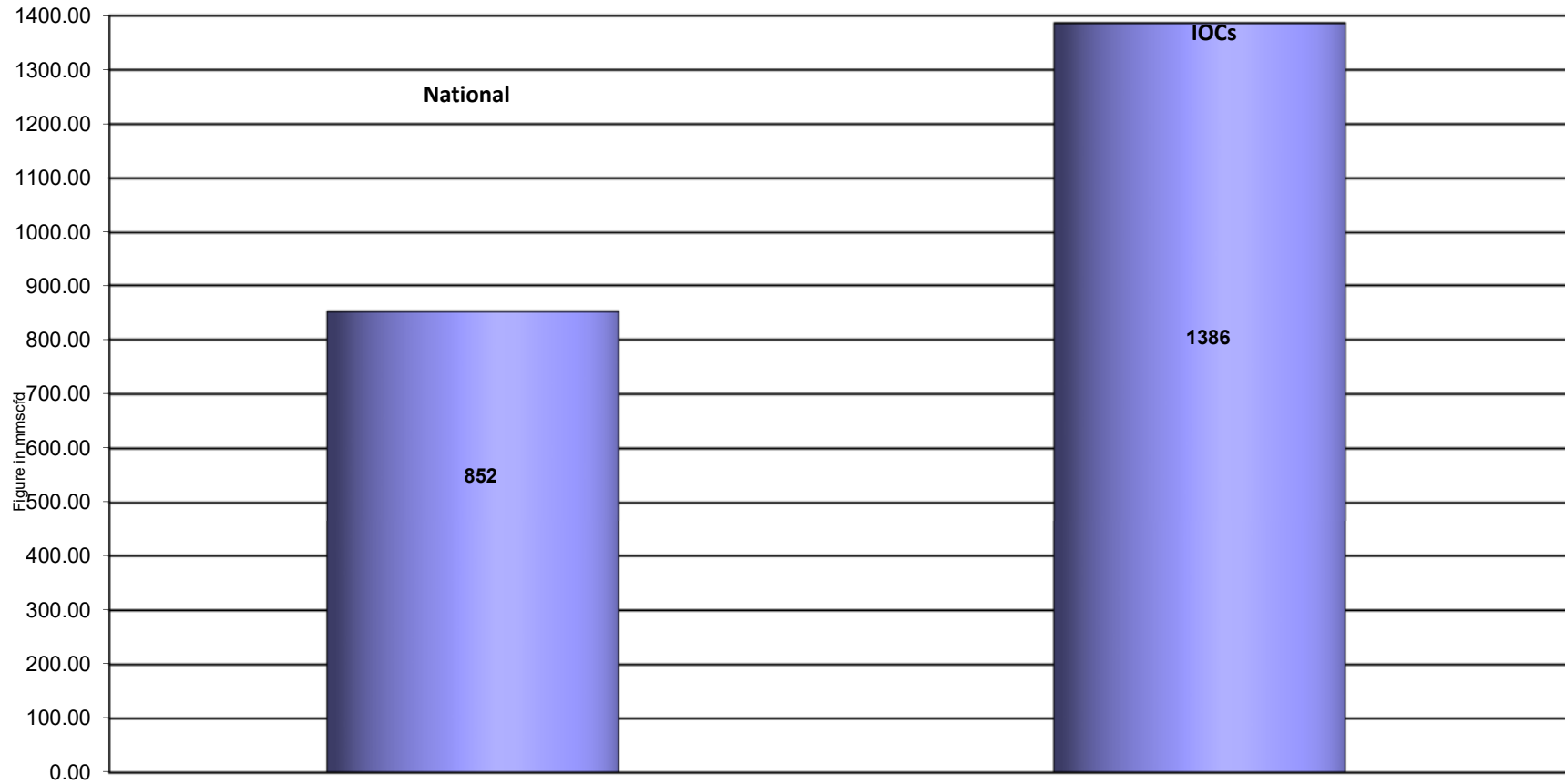
## Daily Avg. Production by Operators January 2023



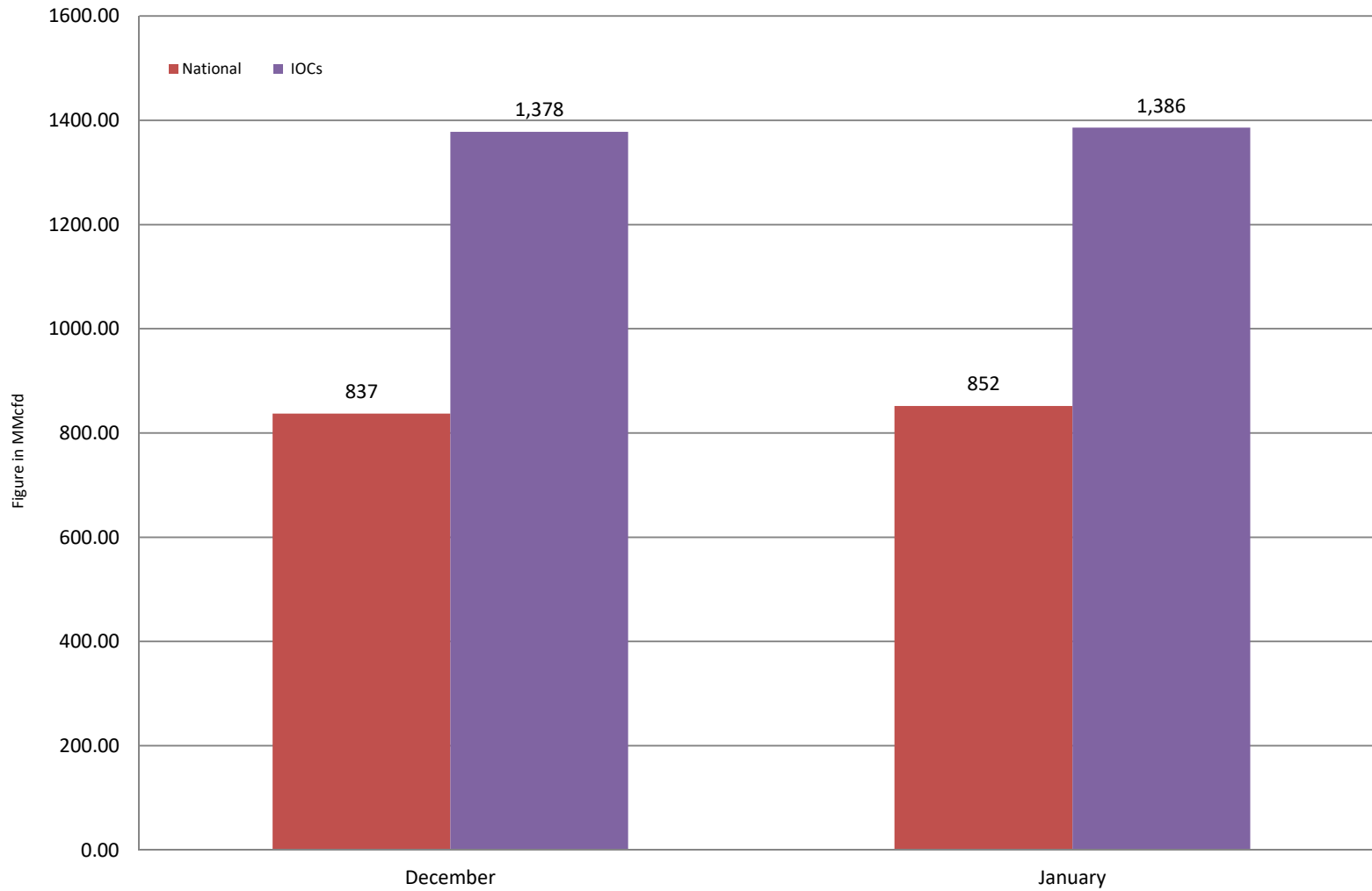
### Comparison of operatorwise daily avg. Gas production between December 2022 & January 2023



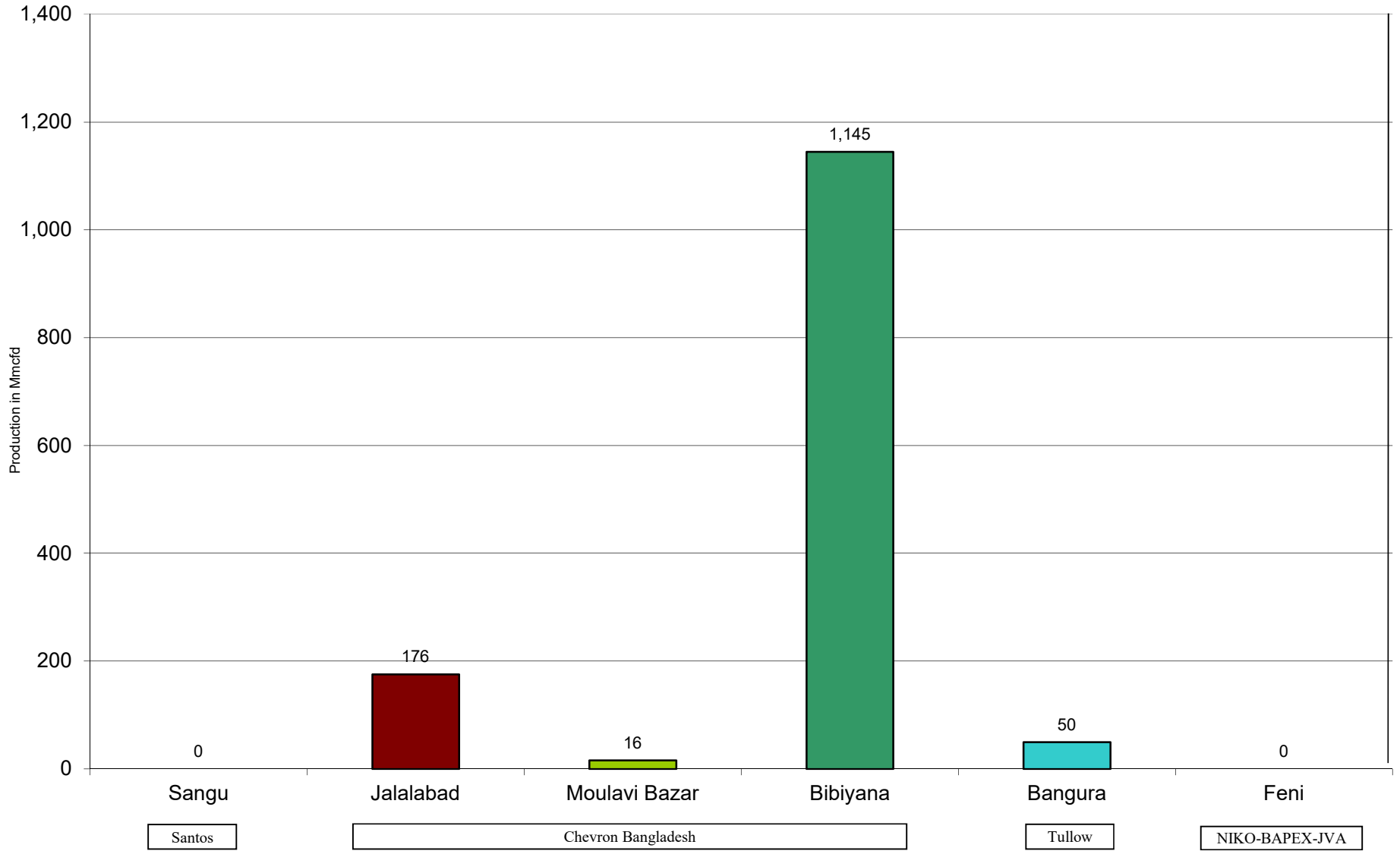
## Daily Avg. Production - National Vs. IOCs January 2023



### Comparison of daily avg. Gas production - National vs IOC's between December 2022 & January 2023

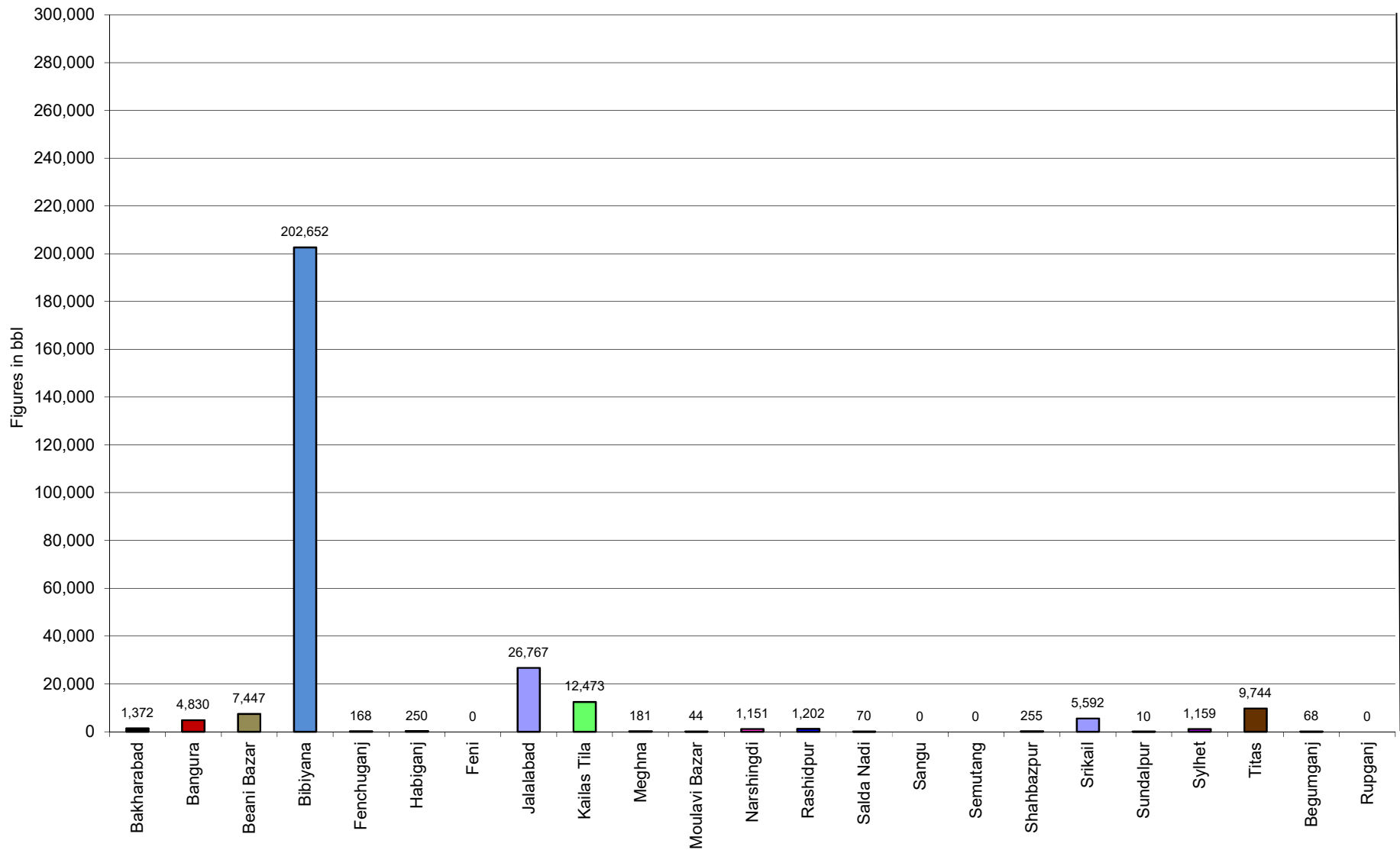


## Daily Avg. Production - IOC and JVA January 2023





## Monthly Condensate Production January 2023



## Field wise Coal Reserve in Bangladesh

SI No.	Coal Basins	Proved (Mt)	Indicated (Mt)	Inferred (Mt)	Total (Mt)
1	Barapukuria	114.32	211.33	21.06+(43-64)*	346.71+(43-64)*
2	Phulbari	288	226	58	572
3	Khalashpir	-	297.57	225.92	523.49
4	Jamalganj	-	-	1053.9	1053.9
5	Dighipara	-	105	495	600
	<b>Total</b>	<b>402.32</b>	<b>839.9</b>	<b>1896.88-1917.88</b>	<b>3139.10-3160.10</b>

*\*Resources of VI Seam in second syncline are towards SW of main basin, after Wardell Armstrong*

*NOTE: Reserve Figure based on Coal Sector Development Strategy (Final), HCU, PwC*

## Summary of Reserve and Production of Barapukuria Coal Mine As of January 2023

<b>Coal Initially Place (Proven + Probable)</b>	<b>346,710 kT</b>	<b>346.71 MT</b>
<b>Total Reserve of Seam VI</b>	<b>285,410 kT</b>	<b>285.41 MT</b>
<b>Recoverable from Seam VI Central part(Proven + Probable)</b>	<b>16,540 kT*</b>	<b>16.54 MT</b>
<b>Coal Production in January 2023</b>	<b>57.15 kT</b>	<b>0.06 MT</b>
<b>Cumulative Production as of January 2023</b>	<b>13,284 kT</b>	<b>13.28 MT</b>
<b>Remaining Reserve</b>	<b>3,256 kT</b>	<b>3.26 MT</b>

*NOTE: Reserve figure based on Mines and Minerals Development Report ,HCU PwC*

\*Figure from BCMCL, M/S Wardell Armstrong. According to Mines and Minerals Development Report ,HCU, PwC this figure is 64.8 Mt

**Barapukuria Coal Mine-MPM and P Contract (BCMCL)**  
**Measurement Record: Surface Belt Weigher**  
**Measurement Period: January 2023**

Day wise data	Consortium Daily Output (ton)	Consortium Cumulative Total	BCMCL Daily Output	BCMCL Cumulative Total	Remarks
1-Jan-2023	1,802.79	1,802.79	1,802.79	1,802.79	
2-Jan-2023	2,355.10	4,157.89	2,355.10	4,157.89	
3-Jan-2023	1,915.41	6,073.30	1,915.41	6,073.30	
4-Jan-2023	2,072.40	8,145.70	2,072.40	8,145.70	
5-Jan-2023	1,949.88	10,095.58	1,949.88	10,095.58	
6-Jan-2023	1,969.17	12,064.75	1,969.17	12,064.75	
7-Jan-2023	2,008.07	14,072.82	2,008.07	14,072.82	
8-Jan-2023	1,992.59	16,065.41	1,992.59	16,065.41	
9-Jan-2023	2,000.51	18,065.92	2,000.51	18,065.92	
10-Jan-2023	1,775.49	19,841.40	1,775.49	19,841.40	
11-Jan-2023	2,025.52	21,866.92	2,025.52	21,866.92	
12-Jan-2023	2,023.14	23,890.06	2,023.14	23,890.06	
13-Jan-2023	2,075.07	25,965.13	2,075.07	25,965.13	
14-Jan-2023	2,020.93	27,986.06	2,020.93	27,986.06	
15-Jan-2023	1,989.76	29,975.82	1,989.76	29,975.82	
16-Jan-2023	1,821.58	31,797.40	1,821.58	31,797.40	
17-Jan-2023	1,749.07	33,546.47	1,749.07	33,546.47	
18-Jan-2023	1,856.71	35,403.17	1,856.71	35,403.17	
19-Jan-2023	1,885.08	37,288.25	1,885.08	37,288.25	
20-Jan-2023	1,997.83	39,286.08	1,997.83	39,286.08	
21-Jan-2023	1,982.26	41,268.34	1,982.26	41,268.34	
22-Jan-2023	2,033.08	43,301.42	2,033.08	43,301.42	
23-Jan-2023	2,025.76	45,327.18	2,025.76	45,327.18	
24-Jan-2023	2,105.91	47,433.09	2,105.91	47,433.09	
25-Jan-2023	2,097.94	49,531.03	2,097.94	49,531.03	
26-Jan-2023	2,034.57	51,565.60	2,034.57	51,565.60	
27-Jan-2023	2,134.19	53,699.79	2,134.19	53,699.79	
28-Jan-2023	1,914.31	55,614.10	1,914.31	55,614.10	
29-Jan-2023	2,075.98	57,690.08	2,075.98	57,690.08	
30-Jan-2023	2,196.16	59,886.24	2,196.16	59,886.24	
31-Jan-2023	2,036.63	61,922.87	2,036.63	61,922.87	

Adjustable coal for scale calibration	-405.48
Total Output	61,517.39
Deduction for scrap dec 22)	2.63
Less Difference in water content	4362.353
Less out of seam Dilution	0.00
<b>Net Output</b>	<b>57,152.41</b>

## Barapukuria Coal Mine Daywise Data Graph for January 2023

